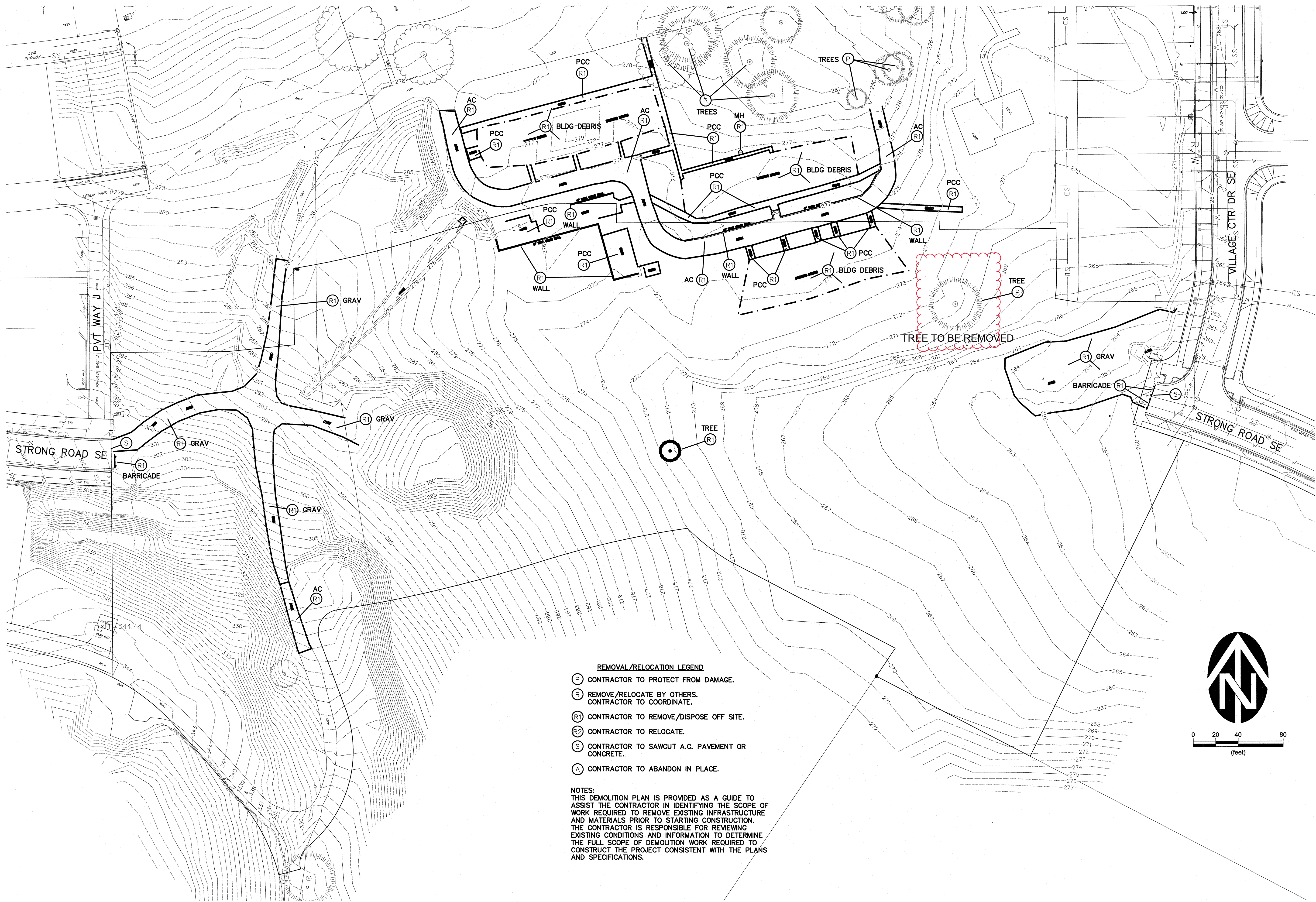


6/3/2023 8:38:39 AM  
R:\Dwg\Olsen\Fairview\_05\P103a\_Survey.dwg (Plot tab)



**REMOVAL/RELOCATION LEGEND**

- (P) CONTRACTOR TO PROTECT FROM DAMAGE.
- (R) REMOVE/RELOCATE BY OTHERS. CONTRACTOR TO COORDINATE.
- (R1) CONTRACTOR TO REMOVE/DISPOSE OFF SITE.
- (R2) CONTRACTOR TO RELOCATE.
- (S) CONTRACTOR TO SAWCUT A.C. PAVEMENT OR CONCRETE.
- (A) CONTRACTOR TO ABANDON IN PLACE.

**NOTES:**  
THIS DEMOLITION PLAN IS PROVIDED AS A GUIDE TO ASSIST THE CONTRACTOR IN IDENTIFYING THE SCOPE OF WORK REQUIRED TO REMOVE EXISTING INFRASTRUCTURE AND MATERIALS PRIOR TO STARTING CONSTRUCTION. THE CONTRACTOR IS RESPONSIBLE FOR REVIEWING EXISTING CONDITIONS AND INFORMATION TO DETERMINE THE FULL SCOPE OF DEMOLITION WORK REQUIRED TO CONSTRUCT THE PROJECT CONSISTENT WITH THE PLANS AND SPECIFICATIONS.

NO.	DATE	DESCRIPTION	BY

VERIFY SCALE  
BY MEASURING ON  
GROUND. THIS MAP IS  
NOT TO BE USED AS A  
REFERENCE FOR  
CONSTRUCTION  
UNLESS SPECIFICALLY  
NOTED OTHERWISE.  
IF NOT ONE INCH ON  
THIS SHEET, ADJUST  
SCALES ACCORDINGLY.

DSN.	RCE		
DRN.	RCE		
CKD.	RCE		

DATE: JUN 2023

REGISTERED PROFESSIONAL ENGINEER  
R. A. WOOD, C.E.  
NO. 12716  
STATE OF OREGON  
LICENSE NO. 12716  
REVISED: 12/31/2023

**WESTECH ENGINEERING, INC.**  
CONSULTING ENGINEERS AND PLANNERS  
3841 Fairview Industrial Dr., S.E., Suite 100, Salem, OR 97302  
Phone: (503) 585-2474, Fax: (503) 585-3886  
E-mail: westech@westech-eng.com

Olsen Design & Development    Monmouth, Oregon  
Fairview Addition West Phase 5

**Survey, Existing Conditions,  
& Demolition Plan**

DRAWING  
**G-5**  
JOB NUMBER  
**2834.5500.0**