

CREEKSIDE LOT 511

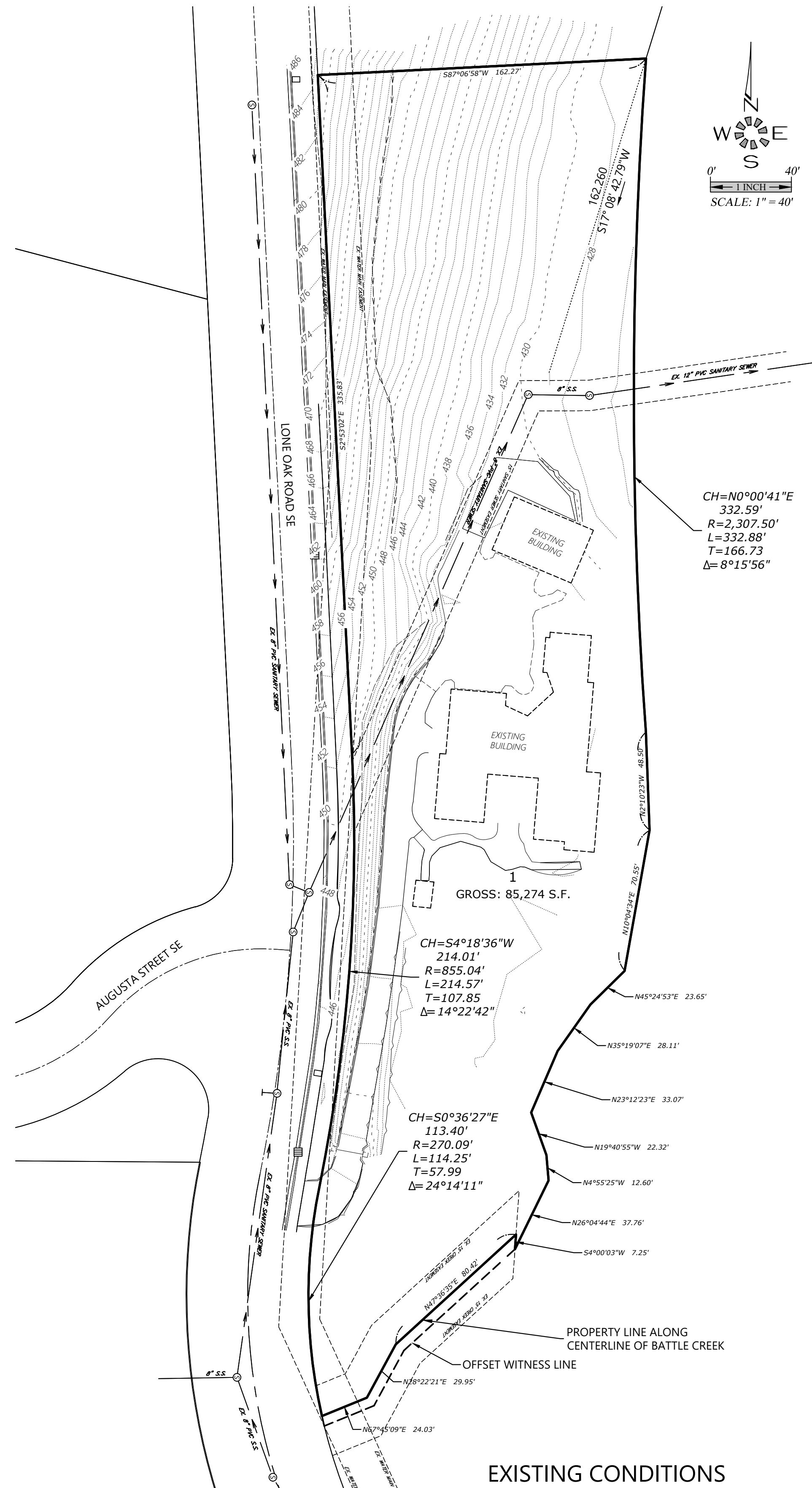
SEC. 22, T. 8 S., R. 3 W., W.M.
CITY OF SALEM
MARION COUNTY, OREGON

Owner/Developer:

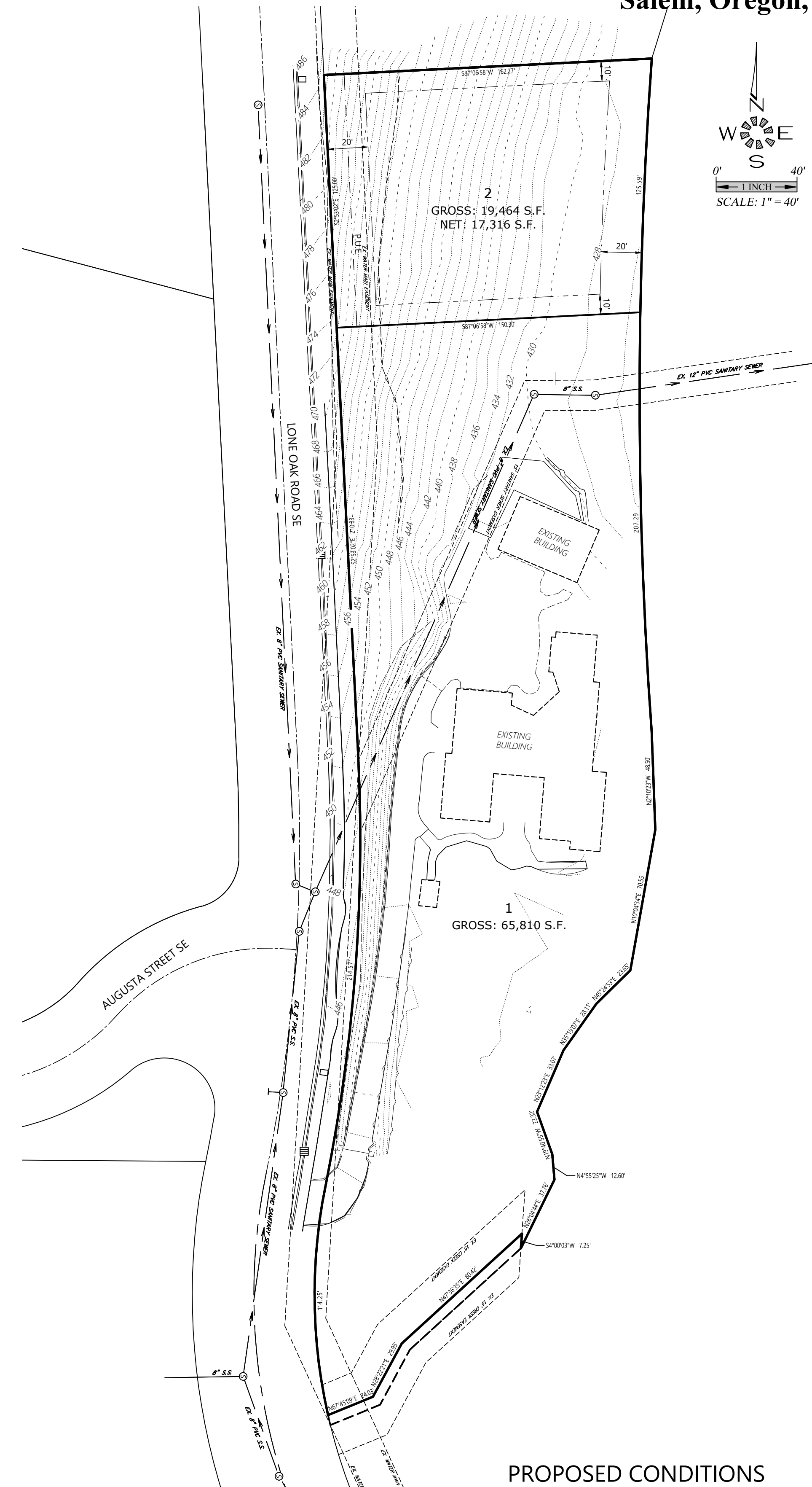
TERRY KELLY
6450 LONE OAK ROAD SE
SALEM, OREGON 97306

Engineer:

Mark Grenz, P.E.
Multi/Tech Engineering Services, Inc.
1155 13th St SE
Salem, Oregon, 97302



EXISTING CONDITIONS



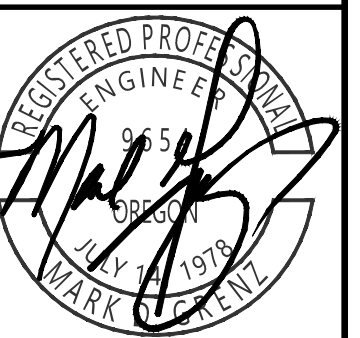
PROPOSED CONDITIONS

COVER SHEET

CREEKSIDE LOT 511

NO CHANGES, MODIFICATIONS
OR REPRODUCTIONS TO BE
MADE TO THESE DRAWINGS
WITHOUT WRITTEN
AUTHORIZATION FROM THE
DESIGN ENGINEER.
DIMENSIONS & NOTES TAKE
PRECEDENCE OVER
GRAPHICAL REPRESENTATION.

75360 PL-C009
Design: M.D.G.
Drawn: C.F.G.
Checked: B.M.G.
Date: AS SHOWN
Scale: AS SHOWN
As-Built:



EXPIRES 06-30-2025
JOB # 7536

1 OF 3