

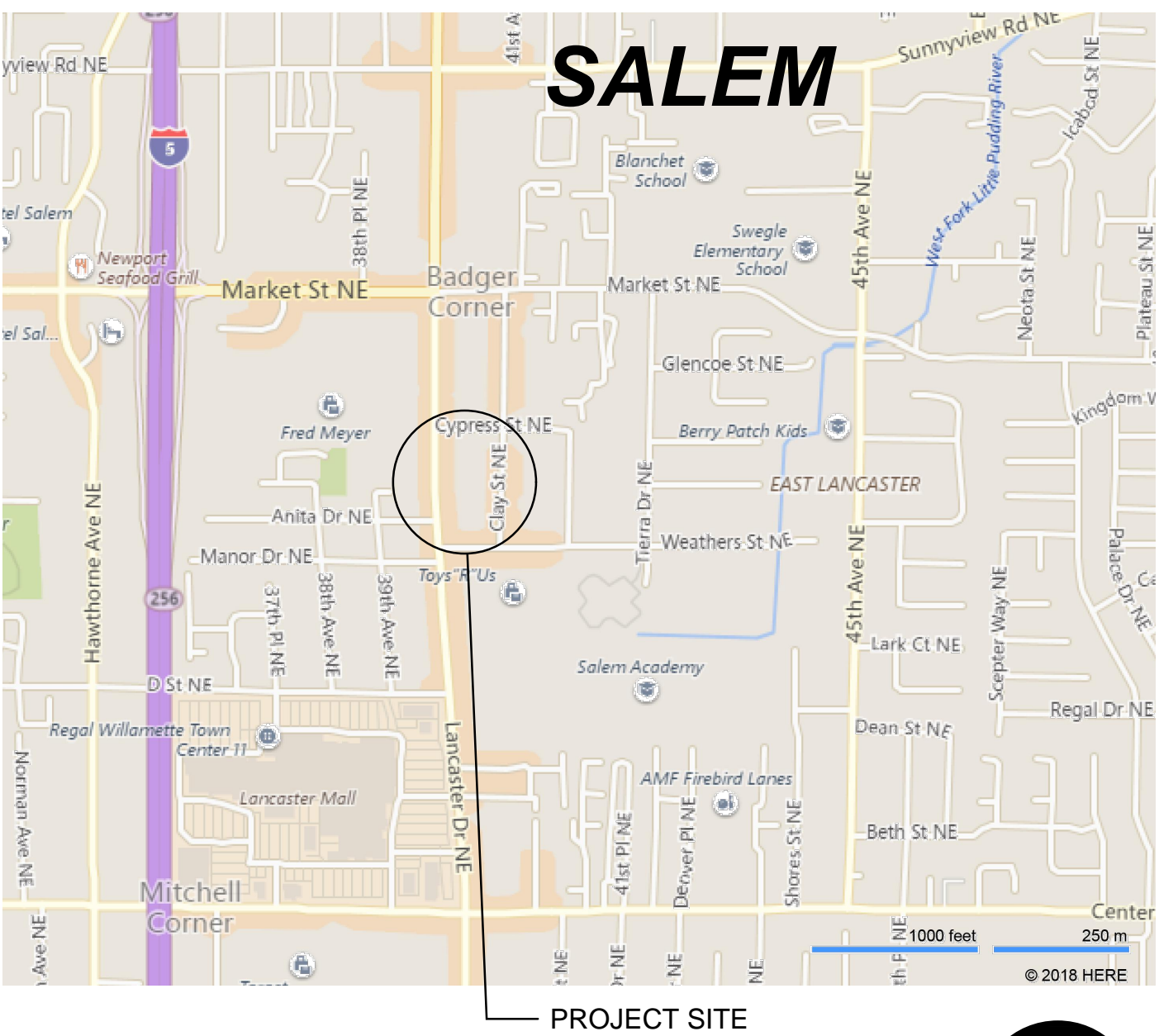
CYPRESS CENTER  
TAN REPUBLIC TI  
1434 LANCASTER DRIVE NE  
SALEM, OREGON 97301

SYMBOL LEGEND

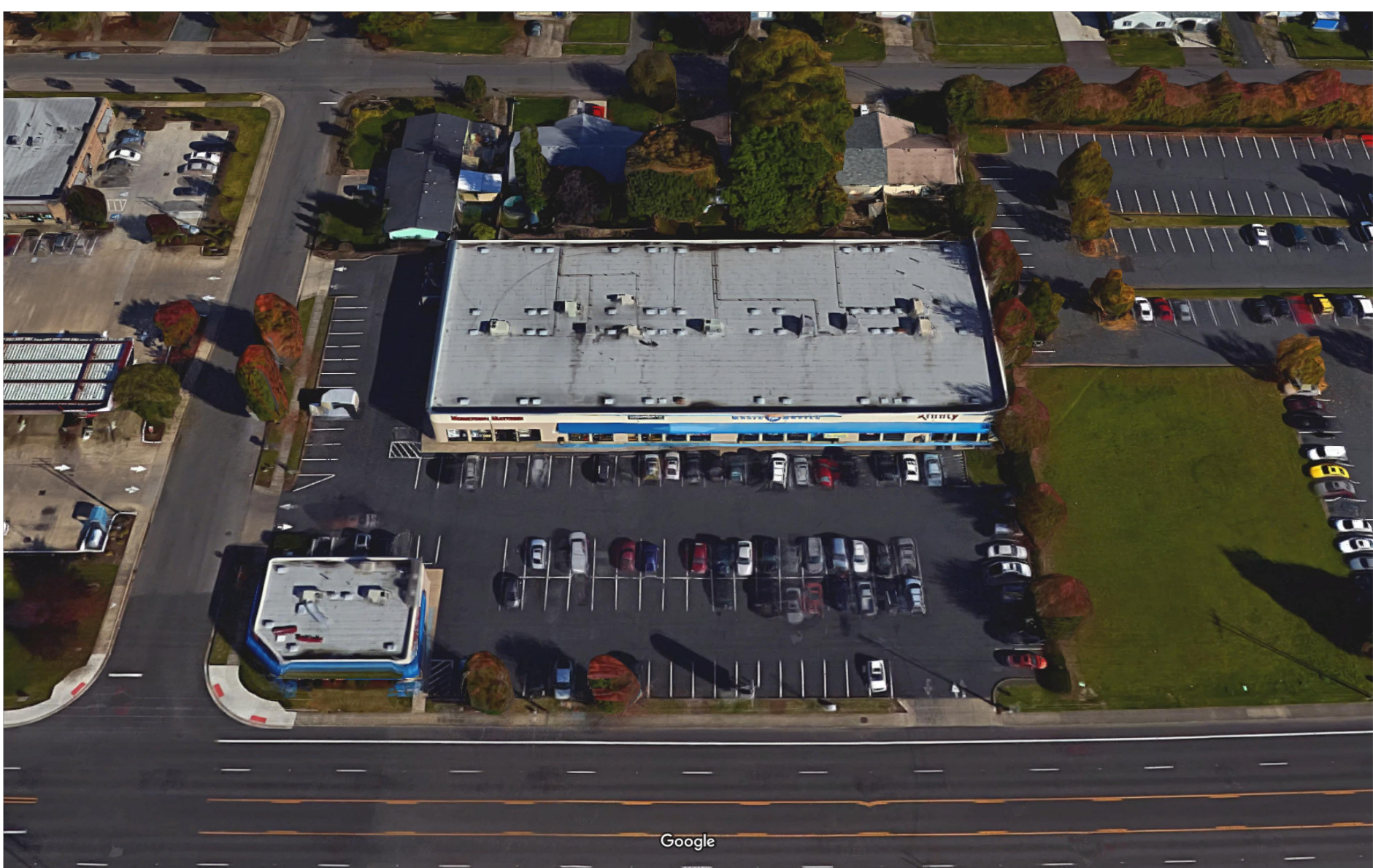
(NOT ALL SYMBOLS MAY BE USED IN THESE DRAWINGS)

- NORTH ARROW
- ROOM NAME AND NUMBER
- WINDOW TAG
- DETAIL NUMBER
- DETAIL INDICATOR
- PAGE NUMBER
- SECTION NUMBER
- PAGE NUMBER
- REVISION CLOUD WITH REVISION NUMBER
- FLOOR ELEVATION
- SPOT ELEVATION
- REFERENCE NOTE INDICATOR
- GRID NOTE INDICATOR

VICINITY MAP



AERIAL VIEW



ABBREVIATIONS

<b>A</b> ANGLE	<b>CNTR.</b> CENTER	<b>C.J.</b> CONTROL JOINT	<b>F.O.F.</b> FACE OF FINISH	<b>L.L.</b> LOW POINT OR LIGHT PROOF	<b>PTN.</b> PARTITION	<b>T.C.</b> TOP OF CURB
<b>@</b> CENTER LINE	<b>CTR.</b> CENTER		<b>F.O.G.B.</b> FACE OF GYP. BASE	<b>P.T.D./R.</b> PAPER TOWEL DISP. & RECEPT.	<b>P.T.R.</b> PAPER TOWEL RECEPTACLE	<b>T.C.V.P.</b> THIN COAT OF VENEER PLASTER
<b>#</b> NUMBER OR FOUND			<b>F.O.S.</b> FACE OF STUD	<b>PUB.</b> PUBLIC		<b>TD</b> TRENCH DRAIN
<b>⊥</b> PERPENDICULAR			<b>F.O.W.</b> FACE OF WALL			<b>TEL</b> TELEPHONE
<b>&gt;</b> PLATE			<b>FP</b> FIREPROOF			<b>TEMP.</b> TEMPERED OR TEMPERATURE
	<b>DBL</b> DOUBLE	<b>DET.</b> DETAIL	<b>F.S.</b> FLOOR SINK	<b>MAS</b> MASONRY	<b>Q.T.</b> QUARRY TILE	<b>TERM.</b> TERMINAL
<b>A.B.</b> ANCHOR BOLT	<b>DISP.</b> DISPENSER	<b>D.F.</b> DOUGLAS FIR	<b>FT.</b> FOOTING	<b>MACH</b> MACHINE	<b>R</b> RADIUS	<b>TERR.</b> TERRAZZO
<b>A.O.</b> ACQUIS.	<b>DN.</b> DOWN	<b>D.O.D.</b> DOOR OPENING DIMENSION	<b>FTG.</b> FOOTING	<b>MATL.</b> MATERIAL	<b>RA</b> RETURN AIR	<b>T &amp; G</b> TONGUE & GROOVE
<b>A.D.</b> AREA DRAIN	<b>D.P.</b> DAMP PROOFING	<b>D.O.D.</b> DOOR OPENING DIMENSION	<b>FUT.</b> FUTURE	<b>MAX.</b> MAXIMUM	<b>R.D.</b> ROOF DRAIN	<b>THRM.</b> THERMAL
<b>ADD.</b> ADDITION	<b>DR.</b> DRAWER	<b>D.O.D.</b> DOOR OPENING DIMENSION		<b>MECH</b> MECHANICAL	<b>REF.</b> REFRIGERATOR	<b>THRS.</b> THRESHOLD
<b>ADJ.</b> ADJUSTABLE OR ADJACENT	<b>DS</b> DOWNSPOUT	<b>D.O.D.</b> DOOR OPENING DIMENSION		<b>MEMB</b> MEMBRANE	<b>REIN.</b> REINFORCED	<b>THRU</b> THROUGH
<b>A.DR.</b> ACCESS DOOR	<b>D.S.P.</b> DRY STAND PIPE	<b>D.O.D.</b> DOOR OPENING DIMENSION		<b>MIR.</b> MIRROR	<b>REQ.</b> REQUIRED	<b>T.O.B.</b> TOP OF BEAM
<b>AGG.</b> AGGREGATE	<b>DWG</b> DRAWING	<b>D.O.D.</b> DOOR OPENING DIMENSION		<b>MISC.</b> MISCELLANEOUS	<b>RESIL.</b> RESILIENT	<b>T.O.M.</b> TOP OF MASONRY
<b>ALUM.</b> ALUMINUM				<b>M.L. &amp; P.</b> METAL LATH & PLASTER	<b>R.H.W.S.</b> ROUND HEAD WOOD SCREW	<b>T.O.C.</b> TOP OF CONCRETE
<b>A.P.</b> ARMOR PLATE				<b>M.O.</b> MASONRY OPENING	<b>RM</b> ROOM	<b>T.O.S.</b> TOP OF STEEL
<b>APPROX.</b> APPROXIMATE				<b>MOS. T.</b> MOSAIC TILE	<b>R.O.</b> ROUGH OPENING	<b>T.P.</b> TOILET PAPER DISPENSER
<b>ARCH.</b> ARCHITECTURAL OR ARCHITECT				<b>MUL.</b> MULLION	<b>R.W.L.</b> RAIN WATER LEADER	<b>TRANS.</b> TRANSFORMER
<b>ASB.</b> ASBESTOS					<b>SAN</b> SANITARY	<b>TREAT.</b> TREATMENT
<b>ASPH.</b> ASPHALT					<b>S.</b> SOUTH	<b>T.O.W.</b> TOP OF WALL
<b>ASST.</b> ASSISTANT					<b>S.C.</b> SOLID CORE	<b>TYP.</b> TYPICAL
<b>AUTO.</b> AUTOMATIC					<b>SCHED.</b> SCHEDULE	<b>T.J.</b> TOOLED JOINT
	<b>E.</b> EAST	<b>E.A.</b> EDGE GUARD	<b>H.B.</b> HOSE BIBB	<b>N</b> NORTH	<b>S.E.</b> SEAT COVER DISPENSER	<b>UNFIN.</b> UNFINISHED
	<b>E.G.</b> EDGE GUARD	<b>E.I.F.S.</b> EXT. INSULATED FINISH SYSTEM	<b>H.C.</b> HOLLOW CORE	<b>NAT.</b> NATURAL	<b>S.D.</b> SOAP DISPENSER	<b>U.O.N.</b> UNLESS OTHERWISE NOTED
	<b>E.I.F.S.</b> EXT. INSULATED FINISH SYSTEM	<b>E.I.</b> ELEVATION	<b>H.D.</b> HEAD	<b>NO.</b> NUMBER	<b>S.D.</b> SOAP DISPENSER	<b>UR.</b> URNAL
	<b>E.I.</b> ELEVATION	<b>E.L.</b> ELEVATION	<b>H.D.W.</b> HANDICAP	<b>NOM.</b> NOMINAL	<b>SEC.</b> SECRETARY	<b>UTIL.</b> UTILITY
	<b>ELEC.</b> ELECTRICAL	<b>EMERG.</b> EMERGENCY	<b>H.W.</b> HARDWOOD	<b>O.A.</b> OVER ALL	<b>SECT.</b> SECTION	
	<b>EMERG.</b> EMERGENCY	<b>ENCL.</b> ENCLOSURE	<b>H.M.</b> HOLLOW METAL	<b>O.C.</b> ON CENTER	<b>SER.</b> SEPARATION OR SEPARATE	
	<b>ENCL.</b> ENCLOSURE	<b>ENTR.</b> ENTRANCE	<b>H.NDR.</b> HANDRAIL	<b>O.D.</b> OUTSIDE FACE	<b>SERV.</b> SERVICE	<b>V.C.T.</b> VINYL COMPOSITE TILE
	<b>ENTR.</b> ENTRANCE	<b>E.P.</b> ELECTRICAL PANEL	<b>H.O.</b> HOLD OPEN	<b>O.F.</b> OWNER FURNISHED CONTRACTOR INSTALLED	<b>SHR.</b> SHOWER	<b>VERT.</b> VERTICAL
	<b>EQ.</b> EQUIPMENT	<b>E.Q.</b> EQUIPMENT	<b>HR.</b> HOUR	<b>OFF.</b> OFFICE	<b>SIM.</b> SIMILAR	<b>VEST.</b> VESTIBULE
	<b>E.W.C.</b> ELECTRIC WATER COOLER	<b>E.W.C.</b> ELECTRIC WATER COOLER	<b>HDWR.</b> HARDWARE	<b>OP.</b> OPENING	<b>SK.</b> SINK	<b>V.G.</b> VERTICAL GRAIN
	<b>EXIST.</b> EXISTING	<b>EXP.</b> EXPOSED	<b>I.D.</b> INSIDE DIAMETER	<b>OPP.</b> OPPOSITE	<b>S.N.R.</b> SANITARY NAPKIN DISPENSER	<b>VOL.</b> VOLUME
	<b>EXT.</b> EXTERIOR	<b>EXT.</b> EXTERIOR	<b>INFO.</b> INFORMATION	<b>OVHD.</b> OVERHEAD	<b>S.O.H.</b> SAME AT OPPOSITE HAND	<b>V.P.</b> VENEER PLASTER
			<b>INSUL.</b> INSULATION		<b>SPEC.</b> SPECIFICATION	
			<b>INT.</b> INTERIOR		<b>SP.</b> SPEAKER	<b>W.</b> WEST
			<b>INV.</b> INVERT		<b>SPK.</b> SPEAKER	<b>W.C.</b> WATER CLOSET
					<b>SQ.</b> SQUARE	<b>W.D.</b> WOOD
					<b>S.S.</b> STAINLESS STEEL	<b>W.D.W.</b> WINDOW
					<b>ST.</b> STREET	<b>W.H.</b> WATER HEATER
					<b>ST. D.</b> STORM DRAIN	<b>W.O.</b> WHERE OCCURS
					<b>STA.</b> STATION	<b>WO</b> WITHOUT
					<b>STD.</b> STANDARD	<b>W.P.</b> WATERPROOF/WEATHERPROOF
					<b>STL.</b> STEEL	<b>W.S.</b> WEATHERSTRIPPING
					<b>STOR.</b> STORAGE	<b>WSCT.</b> WAINSCOT
					<b>STRUC.</b> STRUCTURAL	<b>WT.</b> WEIGHT
					<b>SUPV.</b> SUPERVISION	
					<b>SUSP.</b> SUSPEND OR SUSPENDED	
					<b>SYM.</b> SYMMETRICAL	
					<b>SHT. MTL.</b> SHEET METAL	
					<b>TOIL.</b> TOILET	
					<b>T.B.</b> TACKBOARD	

SHEET INDEX

ARCHITECTURAL

- A0.0

COVER SHEET - PROJECT INFORMATION
- A0.1

CODE REVIEW, DEMO PLAN, OVERALL BUILDING PLAN
- A1.1

SITE PLAN
- A2.0

NEW FLOOR PLAN
- A4.0

ENLARGED RESTROOM FLOOR PLAN, ELEVATIONS
- A5.0

CASEWORK ELEVATIONS, SCHEDULES, DETAILS
- A6.0

REFLECTED CEILING PLAN, DETAILS

DESIGN TEAM

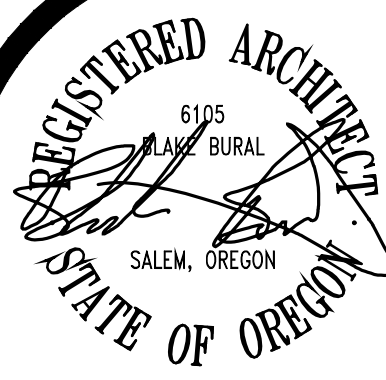
- OWNER:

TIM HENSELEY  
3559 CROISEN MOUNTAIN DRIVE SOUTH  
SALEM, OREGON 97302
- TENANT CONTACT:

ALESHA STANAGE  
1434 LANCASTER DR NE  
SALEM, OR 97301  
PH: 503.428.7585  
alesha@tanrepublic.com
- ARCHITECT:

AC+CO ARCHITECTURE  
1100 LIBERTY STREET SE, SUITE 200  
SALEM, OREGON 97302  
PH: 503.581.4114  
FAX: 503.581.3655  
ATTN: BLAKE BURAL, AIA  
bbural@accocac.com
- GENERAL CONTRACTOR:

CD REDDING CONSTRUCTION  
2837 22ND STREET SE  
SALEM, OREGON 97302  
PH: 503-581-0048



In the event conflicts are discovered between the original signed and sealed documents prepared by the Architects and/or their Consultants, and any copy of the documents transmitted by mail, fax, electronically or otherwise, the original signed and sealed documents shall govern.

JOB NO. 2023.0036

DATE APRIL 17, 2023

DRAWN LMM

REVISIONS

ac+co

ARCHITECTURE  
COMMUNITY  
1100 Liberty Street SE  
Suite 200  
Salem, OR 97302  
P: 503.581.4114  
www.accocac.com

CYPRESS CENTER  
TAN REPUBLIC TI  
1434 LANCASTER DRIVE NE  
SALEM, OREGON 97301

PROJECT INFORMATION

SHEET

A0.0



CODE REVIEW

GENERAL

USE:	MAIN BUILDING: RETAIL, BUSINESS CORNER BUILDING: RESTAURANT
PROJECT NUMBER:	2023.0029
CODES:	2022 OREGON STRUCTURAL SPECIALTY CODE, AMENDMENTS BASED ON 2021 IBC
PRINCIPAL ARCHITECT:	BLAKE BURAL, AIA
PROJECT DESCRIPTION:	PROJECT INCLUDES TWO COMPONENTS: 1. CODE REVIEW TO CLARIFY THE CURRENT CODE ANALYSIS TO REMOVE THE TYPE V-A DESIGNATION THAT APPLIES ONLY TO THE MIDDLE OF THE BUILDING, THE INTENT BEING TO CLASSIFY THE ENTIRE BUILDING AS TYPE V-B. 2. SITE PLAN REVIEW FOR NEW TENANT IDENTIFIED ON SHEET A1.1, SITE PLAN

USE AND OCCUPANCY CLASSIFICATION (CHAPTER 3)

MAIN BUILDING:	RETAIL = M BUSINESS = B
CORNER BUILDING:	RESTAURANT = A-2

GENERAL BUILDING HEIGHTS & AREAS (CHAPTER 5)

CONSTRUCTION TYPE:	EXISTING: V-B (NON-SPRINKLERED)	TABLE 503
ALLOWABLE AREA:	VB = 9,000 SF, BASIC	TABLE 506.2
EXISTING AREAS:		
MAIN BUILDING:	24,433 SF	
CORNER BUILDING:	2,462 SF	
PROPOSED TENANT:	2,778 SF TAN REPUBLIC	B OCCUPANCY
MAIN BUILDING ONLY:		
FRONTAGE INCREASE:	$I = [F/P - 0.25] W/30 =$ $I = [(339/678 - 0.25) \times 1] = .25$	SECTION 506.2
ALLOWABLE BUILDING AREA INCREASE:	$Aa = (At + [At \times I]) + [At \times Is]$ $Aa = (9,000 + [9,000 \times .25]) = 11,250 SF$	SECTION 506.1
EXISTING BUILDING IS OVER ALLOWABLE AREA, AND IS NON-CONFORMING OVER ALLOWABLE AREA TYPE V-B CONSTRUCTION.		
OCCUPANCY SEPARATIONS:	NONE ADJACENT TENANT SPACES ARE M OR B OCCUPANCY, NO SEPARATION REQUIRED	TABLE 508.4
INCIDENTAL USES:	NONE	SECTION 509

TYPES OF CONSTRUCTION (CHAPTER 6)

CONSTRUCTION TYPE:	V-B	
BUILDING ELEMENTS:		
STRUCTURAL FRAME:	NON-RATED	TABLE 601
EXTERIOR BEARING WALL:	NON-RATED	TABLE 601
INTERIOR BEARING WALL:	NON-RATED	TABLE 601
EXTERIOR NON-BEARING WALL, (MOCC):		
< 5'-0" =	1-HOUR	TABLE 602
≥ 5'-0" < 10'-0" =	1-HOUR	TABLE 602
≥ 10'-0" < 30'-0" =	NON-RATED	TABLE 602
> 30'-0" =	NON-RATED	TABLE 602
INTERIOR NON-BEARING WALL	NON-RATED	TABLE 601
FLOOR, INCLUDING BEAMS	NON-RATED	TABLE 601
ROOF, INCLUDING BEAMS	NON-RATED	TABLE 601

FIRE & SMOKE PROTECTION (CHAPTER 7)

FIREBARRIERS:	
2-HOUR FIRE BARRIERS TO REMAIN IN PLACE:	
TO BE CONSTRUCTED FROM FLOOR TO UNDERSIDE OF ROOF:	
MAX OPENING IS 25% OF LENGTH OF WALL AND 156 SF FOR A SINGLE OPENING.	

FIRE PROTECTION (CHAPTER 9)

GROUP M	
NOT SPRINKLERED	

EGRESS (CHAPTER 10)

OCCUPANT LOAD:	2778/150= 19 OCCUPANTS
2 EXITS REQUIRED BASED ON EXIT LENGTH (GREATER THAN 100 FT)	
2 EXITS PROVIDED	
EXIT DOORS ARE TO BE PROVIDED WITH PANIC HARDWARE OR CAN ONLY REQUIRE A SINGLE MEANS OF ACTION TO OPERATE AND EXIT THE DOOR. ADDITIONAL DEADBOLTS ARE NOT ACCEPTABLE.	

ARCHITECTURAL BARRIER LIST/ PLAN:

COST OF IMPROVEMENT:	\$80,000
ACCESSIBLE UPGRADES REQUIRED:	\$20,000
ACCESSIBLE UPGRADES PROVIDED:	\$26,000, COMPLIES
1. PARKING SPACE- EXISTING TO REMAIN AND COMPLIANT, NO WORK PROPOSED	
2. ACCESSIBLE ENTRANCE- EXISTING TO REMAIN AND COMPLIANT, NO WORK PROPOSED	
3. ACCESSIBLE ROUTE TO ALTERED AREA:	
-ACCESSIBLE DOORS TO RESTROOM: 1 @ \$1500= \$1,500	
-ACCESSIBLE DOORS AT NEW ROOMS: 8 @ \$1500 = \$12,000	
4. ONE NEW UNISEX RESTROOMS WITHIN SUITE WILL BE FULLY ACCESSIBLE: \$12,500	
5. ACCESSIBLE TELEPHONE: N/A	
6. ACCESSIBLE DRINKING FOUNTAIN- NO WORK PROPOSED	

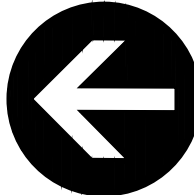
ZONING CODE

ZONE:	MU-III - MIXED USE III
PERMIT USES:	BUSINESS & PROFESSIONAL SERVICES, RETAIL, RESTAURANT
BUILDING USE SUMMARY:	
MAIN BUILDING:	SUITE 1410 INTERSTATE MEDICAL (OUTPATIENT MEDICAL) SUITE 1420 EMPTY (RETAIL) SUITE 1426 NEW TENANT (RETAIL) SUITE 1434 TAN REPUBLIC (PERSONAL SERVICE) SUITE 1436 DIP NAILS (PERSONAL SERVICE) SUITE 1440 RADAR TOYS (RETAIL) SUITE 1480 BEST TERIAKI (EATING & DRINKING)
CORNER BUILDING:	
EXISTING BUILDINGS:	MAIN BUILDING: 24,433 SF CORNER BUILDING: 2,462 SF TOTAL AREA: 26,895 SF
PARKING MAXIMUM:	SHOPPING CENTER: 1 SPACE / 200 SF REQ'D THIS SITE: 26,895 / 200 = 134 STALLS
PARKING PROVIDED (EXISTING):	116 SPACES TOTAL, INCLUDING (5) ACCESSIBLE SPACES 57 FULL SIZE 59 COMPACT
BICYCLE PARKING REQUIRED:	SHOPPING CENTER: GREATER OF 4, OR 1 SPACE / 5,000 SF REQ'D THIS SITE: 26,895 / 5,000 = 6 SPACES
BICYCLE PARKING PROVIDED:	(3) RACKS = (6) SPACES SHOWN ON SITE PLAN, WITH DETAILS THIS SHEET
LOADING ZONE:	(1) REQUIRED AT 12 FT X 30 FT
NONE PROVIDED UTILIZING THE FOLLOWING EXCEPTION:	NO DELIVERIES OVER 8,000 LBS. SO LOADING WILL OCCUR WITHIN 25 FT OF FRONT DOORS UTILIZING HEAD-IN SPACES IN FRONT OF BUSINESSES.

DEMOLITION LEGEND:

=====	EXISTING WALLS TO REMAIN
-----	DASHED LINES INDICATE AREA TODDEMOLISH EXISTING WALL, DOOR, CASEWORK AND/OR PLUMBING FIXTURE
	EXISTING FIRE BARRIER WALL TO BE REMOVED
	EXISTING FIRE BARRIER WALL TO REMAIN

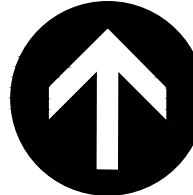
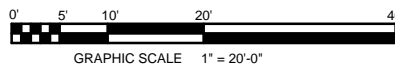
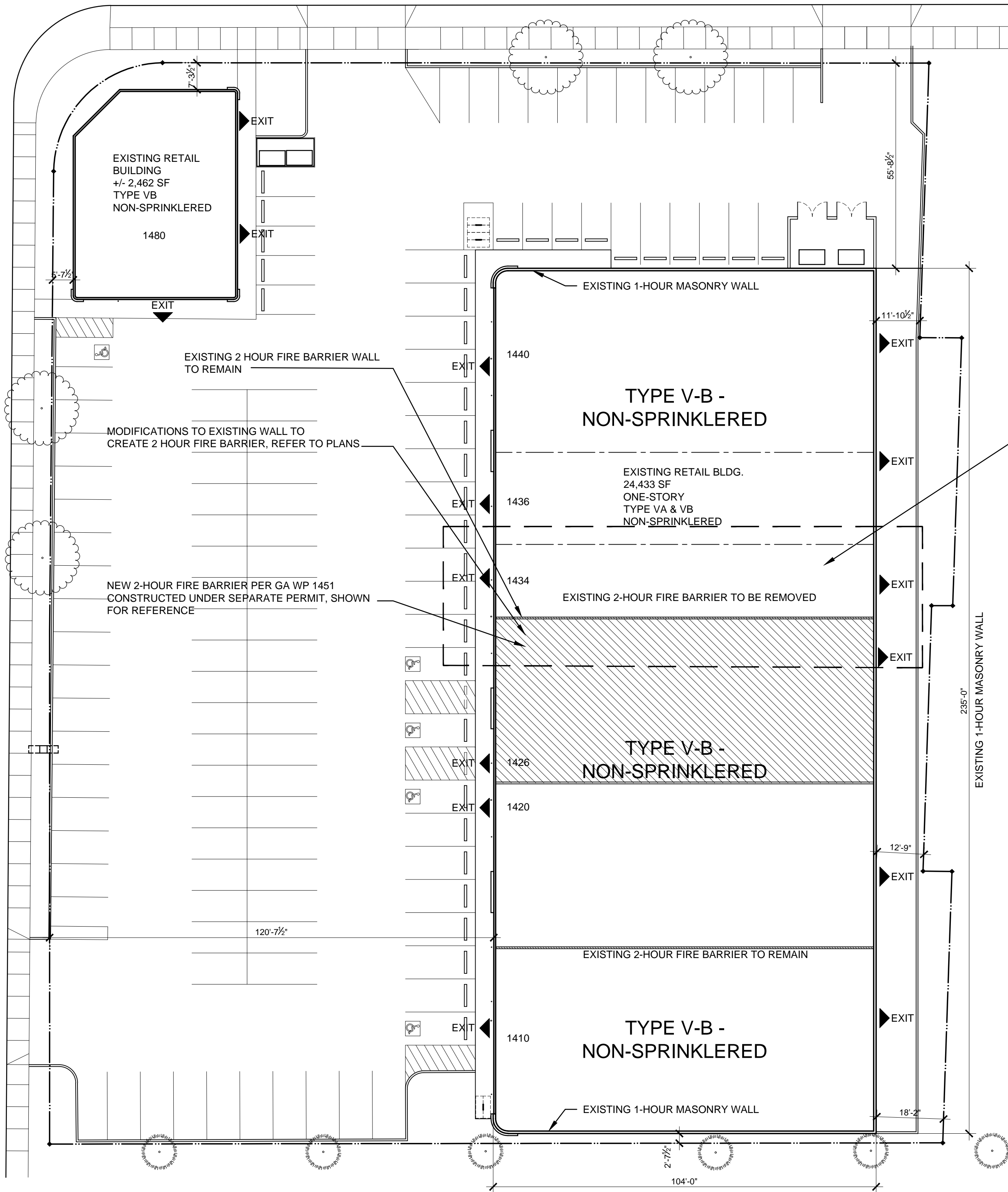
1 DEMO PLAN OF TI  
SCALE: 1" = 20'-0"



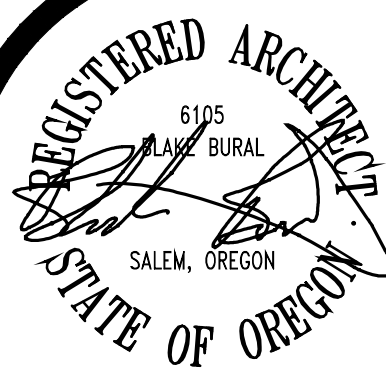
2 CODE REVIEW FOR EXISTING SITE & BUILDING  
SCALE: 1" = 20'-0"

CYPRESS STREET NE

LANCASTER DRIVE NE



LOCATION OF  
TENANT IMPROVEMENT



In the event conflicts are discovered between the original signed and sealed documents prepared by the Architects and/or their Consultants, and any copy of the documents transmitted by mail, fax, electronically or otherwise, the original signed and sealed documents shall govern.

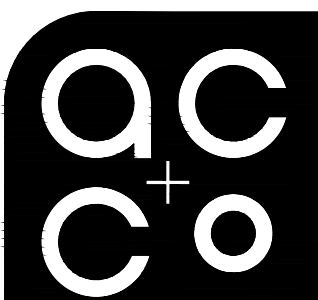
JOB NO. 2023.0036

DATE APRIL 17, 2023

DRAWN LMM

REVISIONS

PLAN REVIEW COMMENTS



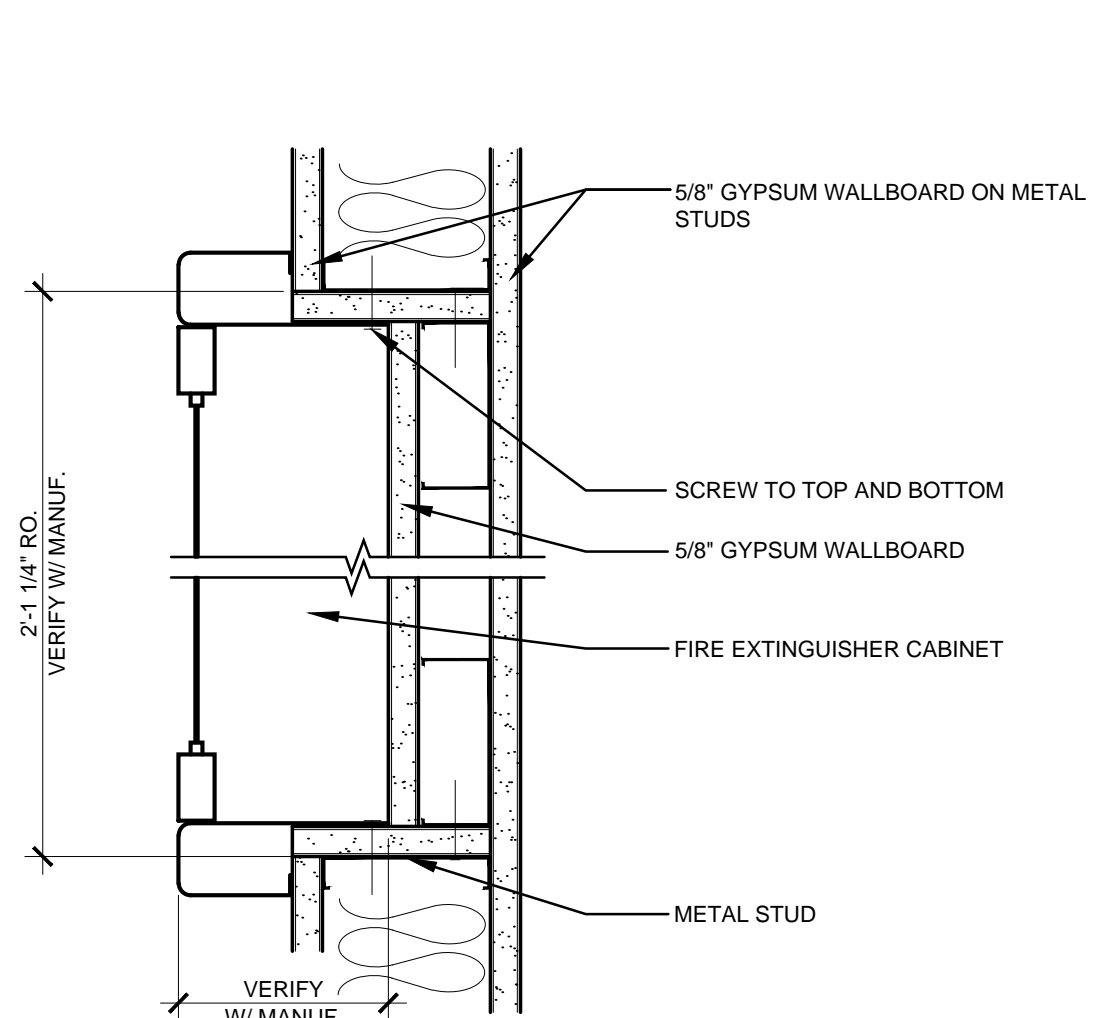
ARCHITECTURE  
COMMUNITY  
1100 Liberty Street SE  
Suite 200  
Salem, OR 97302  
P: 503.581.4114  
www.accoac.com

CYPRESS CENTER  
TAN REPUBLIC TI  
1434 LANCASTER DRIVE NE  
SALEM, OREGON 97301

CODE REVIEW

SHEET

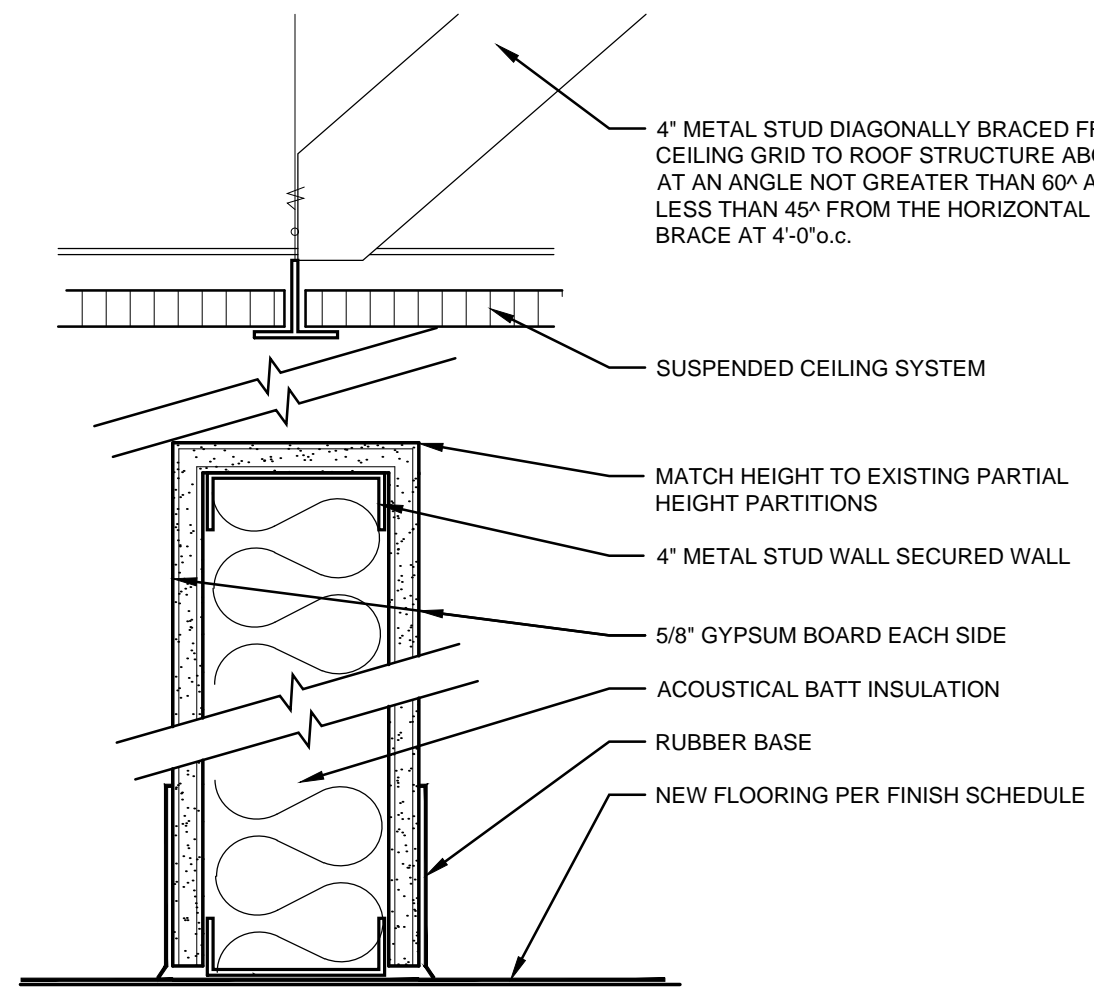
A0.1



2 FIRE EXTINGUISHER CABINET

SCALE: 1 1/2" = 1'-0"

23031-A2.0-02



3 PARTIAL HT. WALL SECTION

SCALE: 3" = 1'-0"

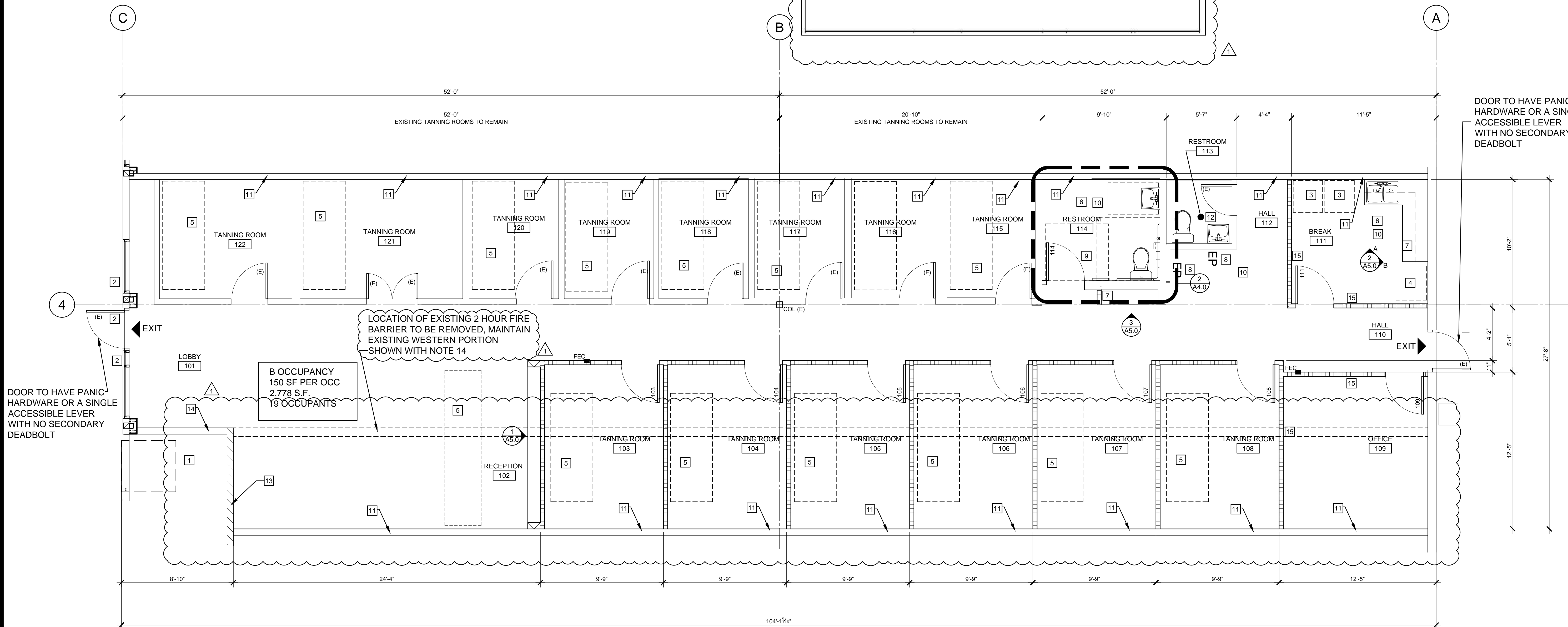
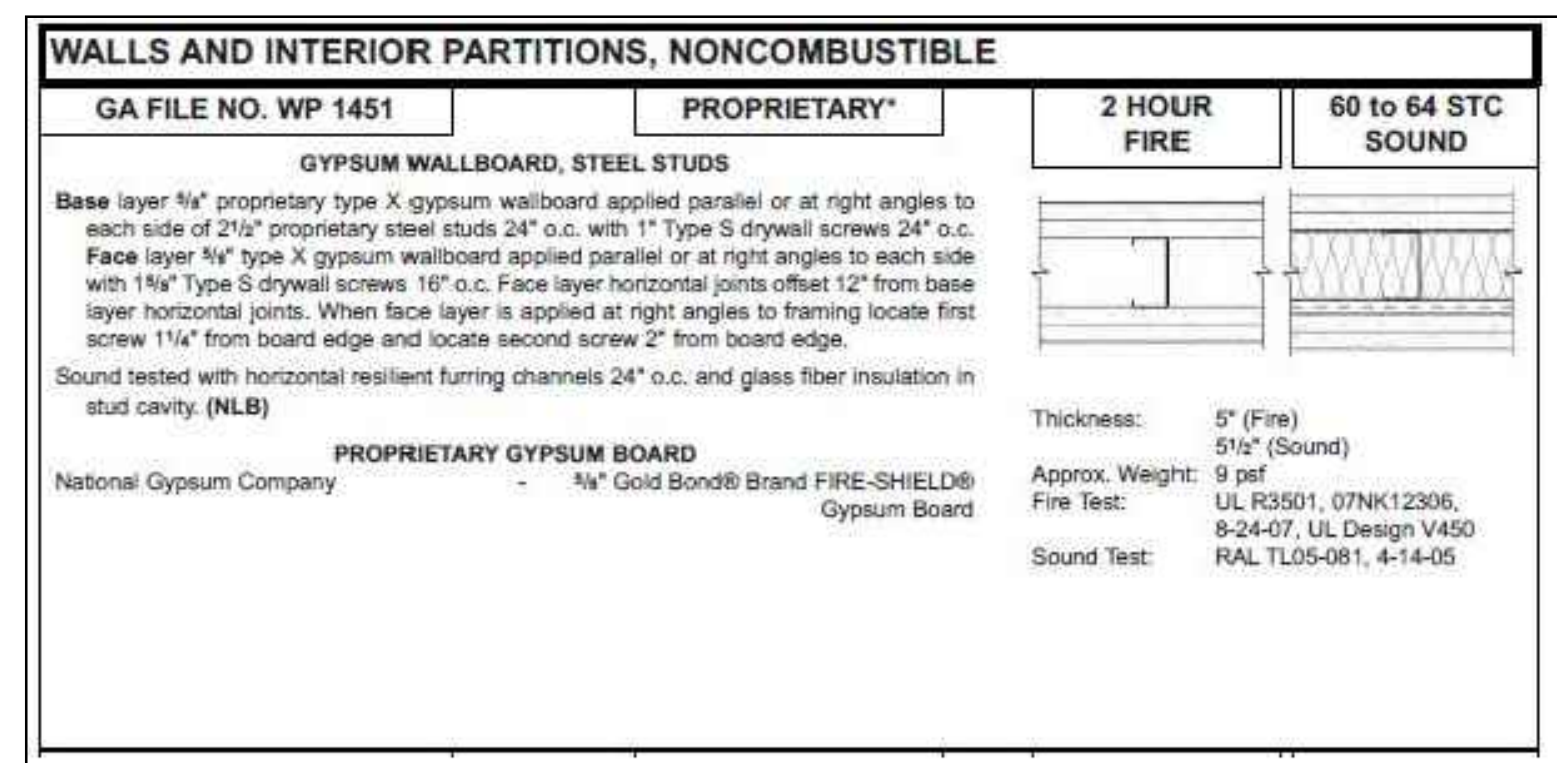
23036-A2.0-03

SYMBOL LEGEND:

- EXISTING WALL TO REMAIN
- INTERIOR WALLS: 4" METAL STUD AT 16" O.C. WITH SOUND INSULATION. ALL NEW INTERIOR WALLS TO BE PARTIAL HEIGHT TO MATCH HEIGHT OF EXISTING TO REMAIN TANNING ROOMS. U.O.N.
- INTERIOR WALLS: 6" METAL STUD AT 16" O.C. WITH SOUND INSULATION. ALL NEW INTERIOR WALLS TO BE PARTIAL HEIGHT TO MATCH HEIGHT OF EXISTING TO REMAIN TANNING ROOMS. U.O.N.
- EXISTING DOOR AND FRAME TO REMAIN
- NEW DOOR AND FRAME, REFER TO DOOR SCHEDULE
- NEW FIRE EXTINGUISHER CABINET
- EXISTING COLUMN TO REMAIN

REFERENCE NOTES:

- NO WORK THIS ROOM
- EXISTING WINDOW SYSTEM AND FRONT DOOR TO REMAIN
- OFCI WASHER AND DRYER, REFER TO ELECTRICAL AND PLUMBING DESIGN/BUILD DRAWINGS
- OFCI FULL SIZE REFRIGERATOR, REFER TO ELECTRICAL AND PLUMBING DESIGN/BUILD DRAWINGS
- FURNITURE BY OWNER, COORDINATE ELECTRICAL NEEDS WITH OWNER AND ELECTRICAL DESIGN/BUILD
- NEW PLUMBING FIXTURES THIS ROOM, REFER TO PLUMBING DESIGN/BUILD
- NEW PLASTIC LAMINATE CASEWORK, REFER TO ELEVATIONS
- EXISTING ELECTRICAL PANEL LOCATION TO REMAIN
- ALL WALLS AT NEW RESTROOM TO BE FULL HEIGHT.
- PROVIDE NECESSARY CONCRETE SLAB INFILL WHERE SAW CUTTING TO OCCUR FOR NEW PLUMBING FOR TENANT SUITE. BIDDER TO PROVIDE 4" CONCRETE SLAB, 3500 PSI, OVER VAPOR BARRIER, VAPOR BARRIER TO BE PATCHED WITH ANY PENETRATIONS OR HOLES THAT ARE EXISTING
- EXISTING DEMISING WALL. REPAIR, PATCH, PREP, TEXTURE AND PAINT WHERE PLUMBING AND ELECTRICAL WORK OCCURS FOR T.I., NOTE THIS WALL IS A 2-HOUR FIRE BARRIER RATED WALL (GA WP 1451 OR APPROVED EQUAL). ALL REPAIR WORK TO BE IN CONFORMANCE TO RATED ASSEMBLY.
- EXISTING PLUMBING FIXTURES TO REMAIN IN THIS ROOM
- EXISTING WALL TO BE MODIFIED TO PROVIDE A 2-HOUR FIRE BARRIER CONSTRUCTION TO MEET GA WP 1451 OR APPROVED EQUAL CONSTRUCTION. WALL TO GO FROM SLAB TO UNDERSIDE OF ROOF.
- EXISTING FIRE BARRIER WALL TO REMAIN
- NEW WALLS FOR THIS ROOM TO BE FULL HEIGHT



1 TENANT FLOOR PLAN

SCALE: 1/4"=1'-0"



In the event conflicts are discovered between the original signed and sealed documents prepared by the Architects and/or their Consultants, and any copy of the documents transmitted by mail, fax, electronically or otherwise, the original signed and sealed documents shall govern.

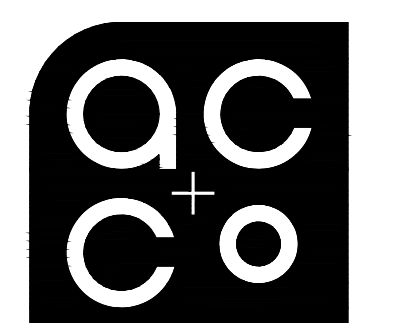
JOB NO. 2023.0036

DATE APRIL 17, 2023

DRAWN LMM

REVISIONS

PLAN REVIEW COMMENTS



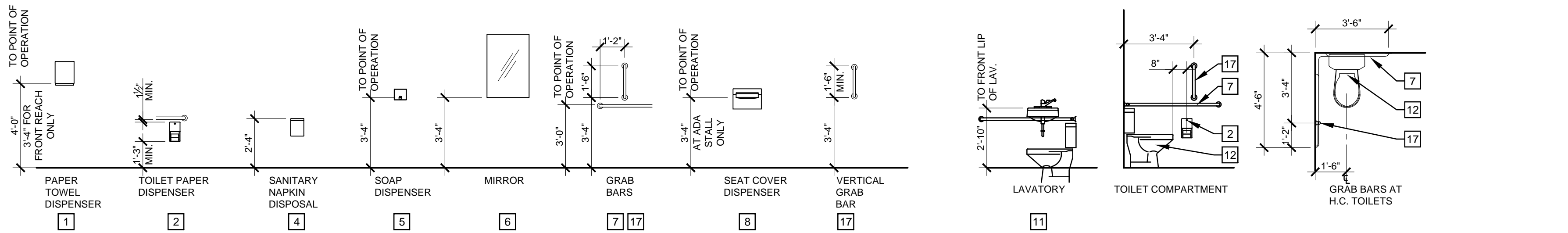
100 Liberty Street SE  
Suite 200  
Salem, OR 97302  
P: 503.581.4114  
www.accoac.com

CYPRESS CENTER  
TAN REPUBLIC TI  
1434 LANCASTER DRIVE NE  
SALEM, OREGON 97301

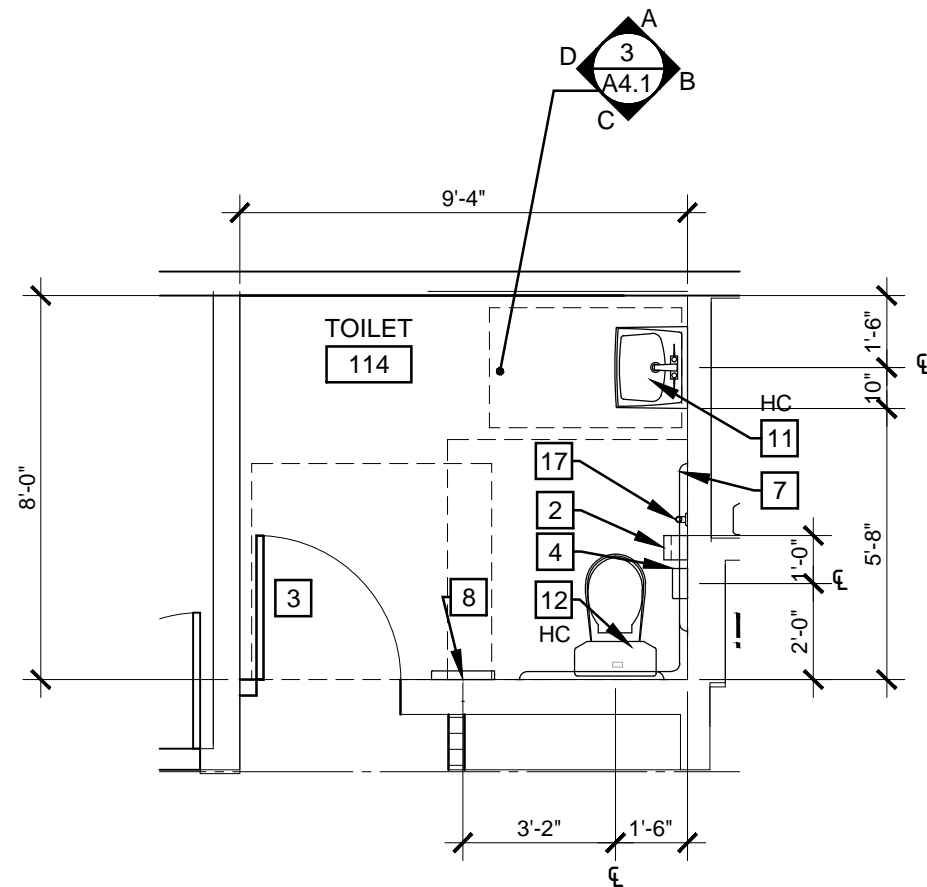
SHEET

A2.0

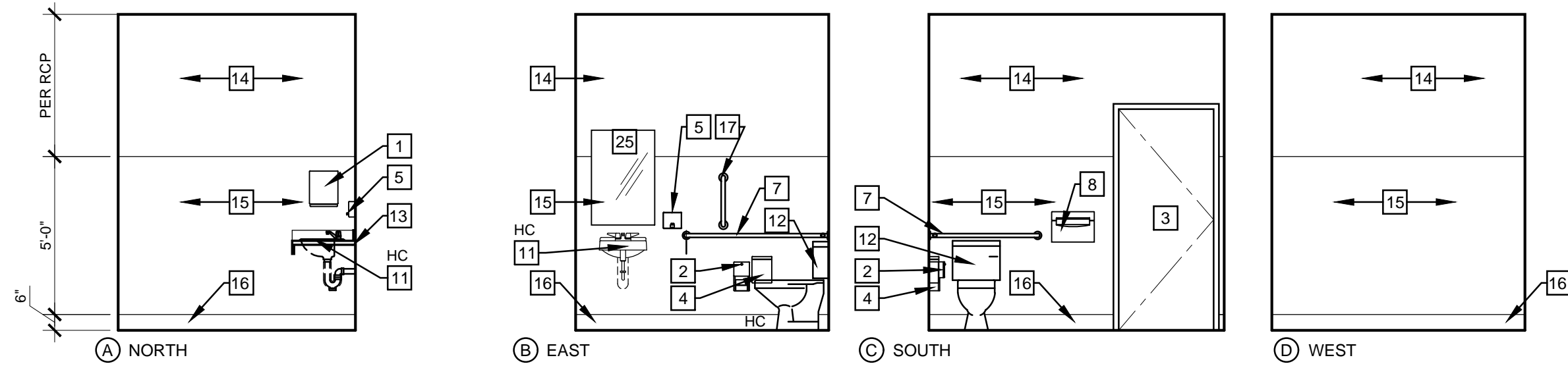




1 TYPICAL HEIGHT & DIMENSIONS FOR TOILET ACCESSORIES & FIXTURES  
SCALE: 1/4" = 1'-0"



2 RESTROOM PLAN  
SCALE: 1/4" = 1'-0"



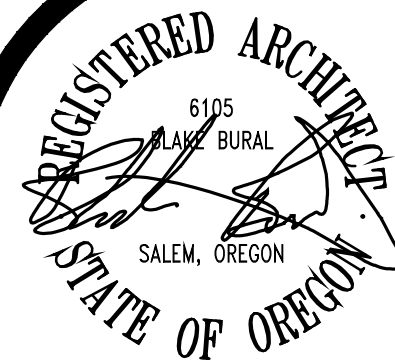
3 RESTROOM ELEVATIONS  
SCALE: 1/4" = 1'-0"

GENERAL NOTES:

1. REFER TO ROOM FINISH SCHEDULE IN SPECIFICATIONS FOR WALL AND FLOORING FINISHES.
2. FLUSH CONTROLS FOR HANDICAPPED ACCESSIBLE WATER CLOSET SHALL BE INSTALLED ON THE WIDE SIDE OF THE WATER CLOSET.
3. MINIMUM DIMENSION TO POINT OF SERVICE FOR TOILET PAPER DISPENSER IS 1'-7". HOWEVER MOUNT AT 24" O.C. AT STANDARD WATER CLOSET AND AS HIGH AS POSSIBLE IN HANDICAP WATER CLOSET ALLOWING 2" CLEARANCE AT UNDERSIDE OF GRAB BAR
4. REFER TO DETAIL 1/A4.0 FOR TYPICAL MOUNTING HEIGHTS AND DIMENSIONS FOR TOILET ACCESSORIES AND FIXTURES.
5. ALL EXPOSED HOT WATER AND WASTE LINES TO BE INSULATED

PLAN NOTES:

- 1 PAPER TOWEL DISPENSER
- 2 TOILET PAPER HOLDER
- 3 DOOR AS OCCURS, REFER TO DOOR SCHEDULE
- 4 SANITARY NAPKIN DISPOSAL
- 5 SOAP DISPENSER
- 6 24X36 MIRROR
- 7 ONE PIECE GRAB BAR
- 8 TOILET SEAT COVER DISPENSER
- 9 PLASTIC LAMINATE SHELF WITH SUPPORT BRACES AS REQ'D, CONFIRM DEPTH WITH DESIGN/BUILD WATER HEATER SUPPLIER
- 10 NOT USED
- 11 LAVATORY WITH PIPE PROTECTION, REFER TO PLUMBING DRAWINGS
- 12 WATER CLOSET, HANDICAP ACCESSIBLE AS INDICATED (HC) . REFER TO PLUMBING DRAWINGS
- 13 QUARTZ COUNTERTOP WITH 4" BACKSPLASH (U.O.N.) AT ALL WALLS
- 14 GYPSUM WALL BOARD, PREP FOR PAINT
- 15 WALL PROTECTION
- 16 BASE AS SCHEDULED
- 17 VERTICAL GRAB BAR



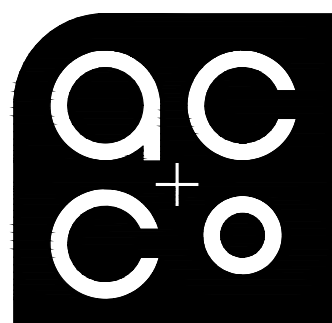
In the event conflicts are discovered between the original signed and sealed documents prepared by the Architects and/or their Consultants, and any copy of the documents transmitted by mail, fax, electronically or otherwise, the original signed and sealed documents shall govern.

JOB NO. 2023.0036

DATE APRIL 17, 2023

DRAWN LMM

REVISIONS



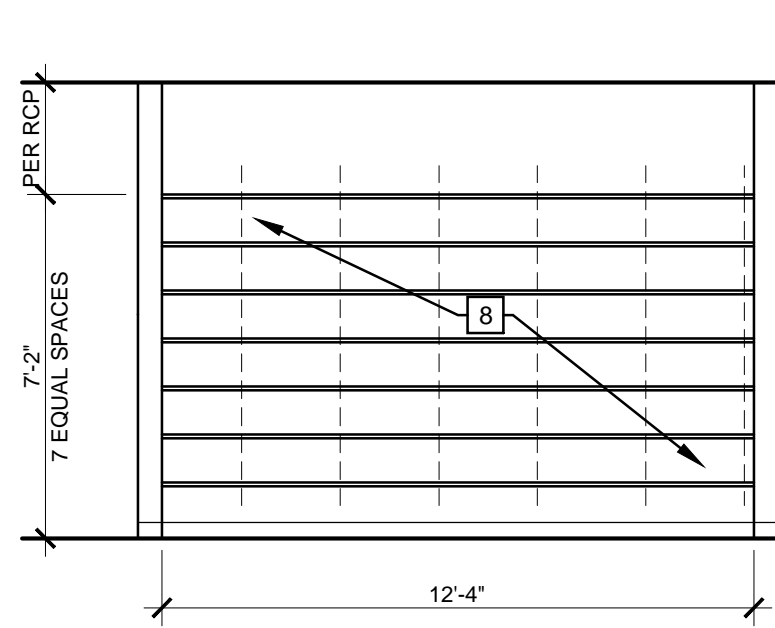
ARCHITECTURE  
COMMUNITY  
1100 Liberty Street SE  
Suite 200  
Salem, OR 97302  
P: 503.581.4114  
www.accoac.com

CYPRESS CENTER  
TAN REPUBLIC TI  
1434 LANCASTER DRIVE NE  
SALEM, OREGON 97301

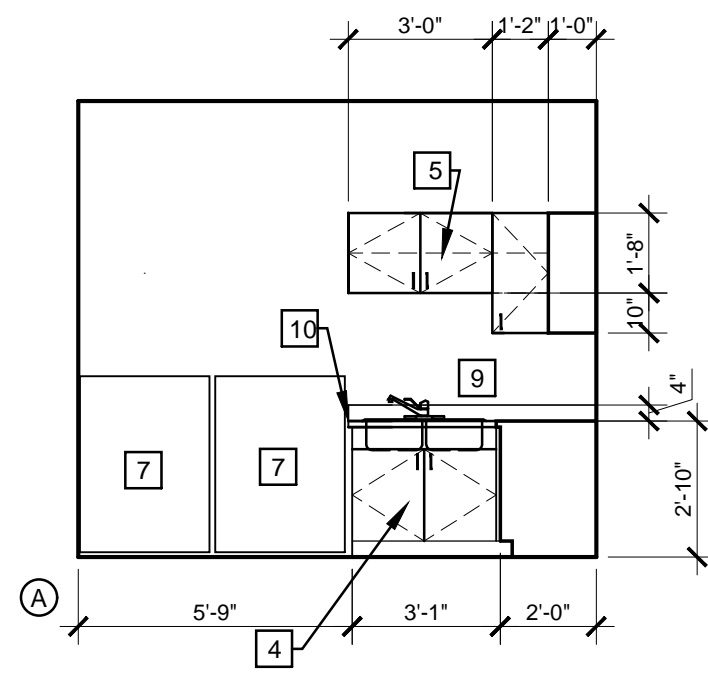
ENLARGED RESTROOM  
PLANS & ELEVATIONS

SHEET

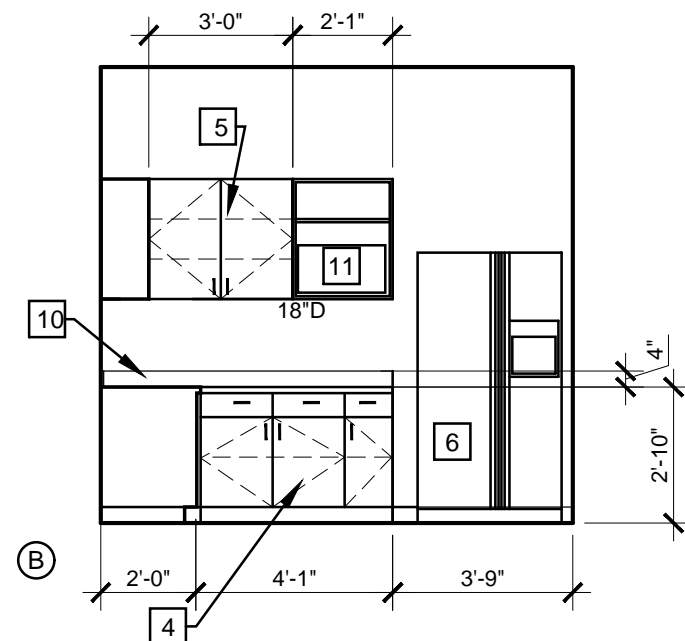
A4.0



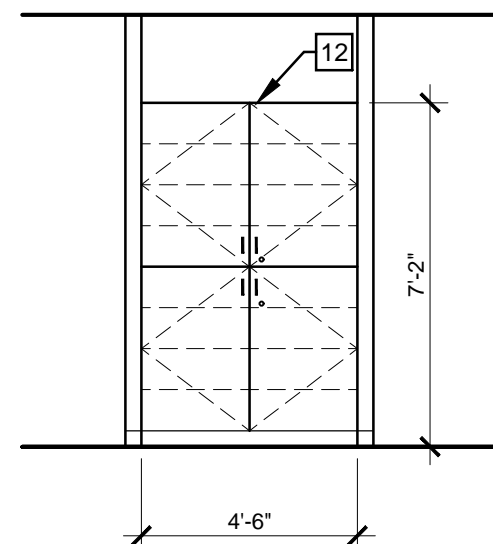
1 DISPLAY ELEVATION  
SCALE: 1/4" = 1'-0"



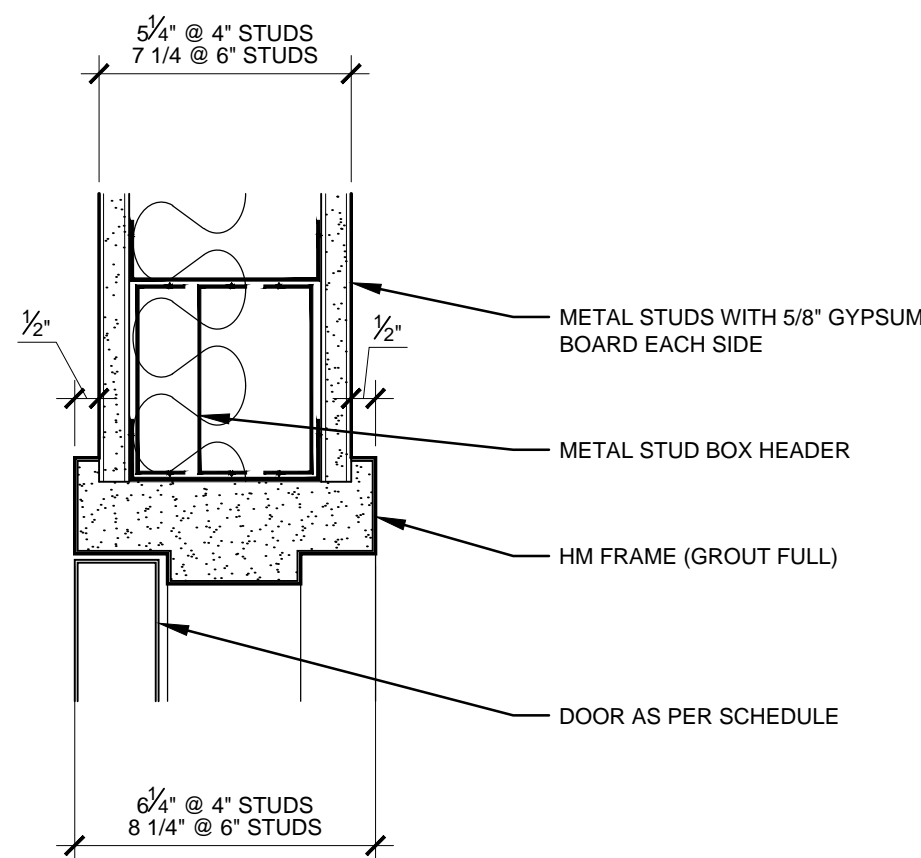
2 BREAK ROOM ELEVATION  
SCALE: 1/4" = 1'-0"



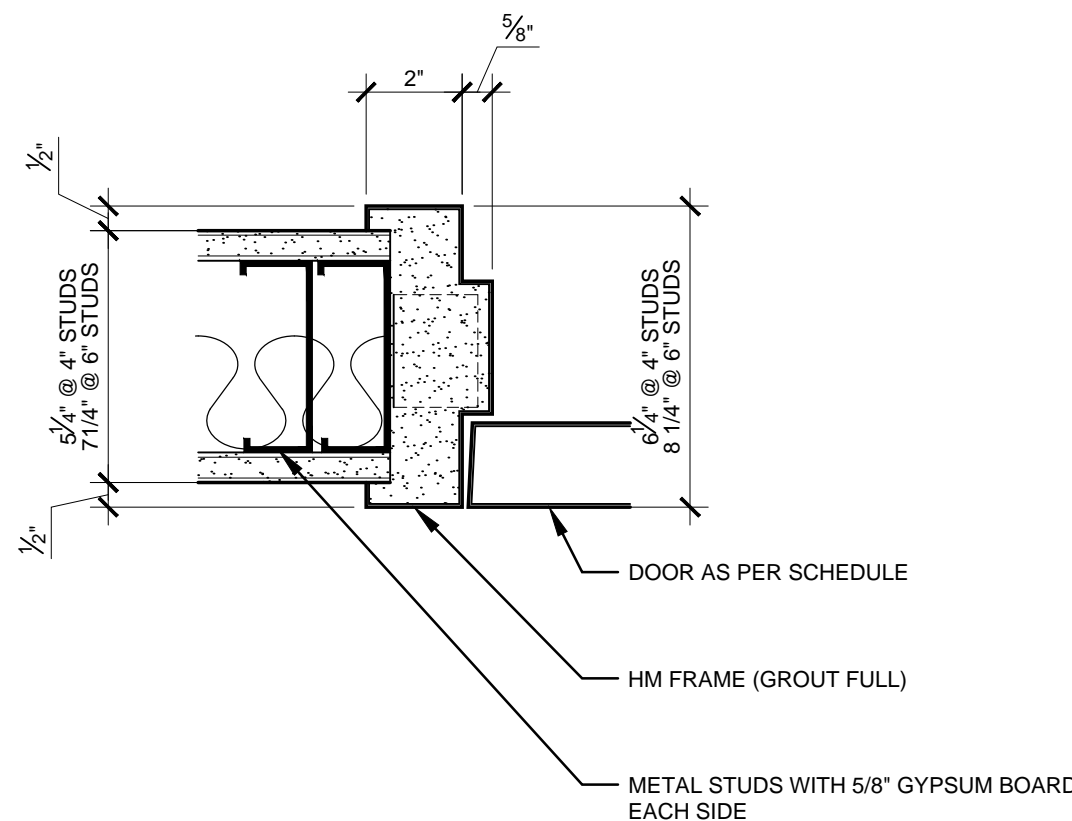
3 STORAGE ELEVATIONS  
SCALE: 1/4" = 1'-0"



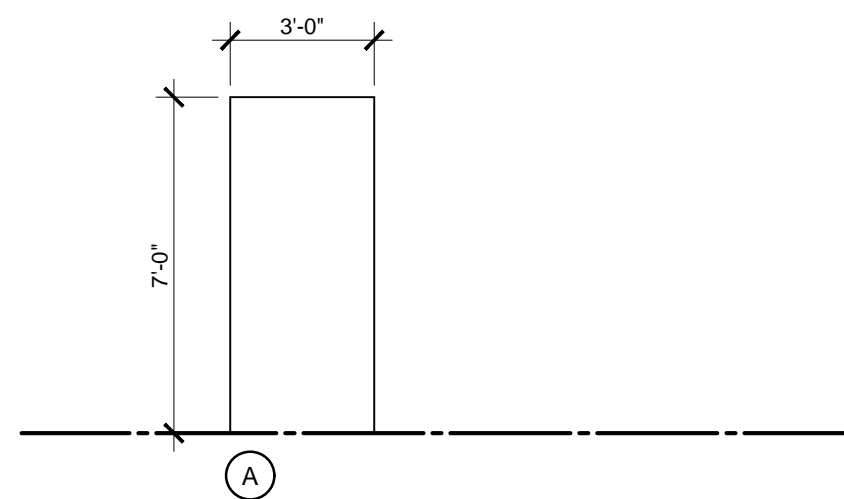
- REFERENCE NOTES:
- 1 GYPSUM WALL BOARD, PREP FOR PAINT
  - 2 BASE PER FINISH SCHEDULE
  - 3 PLASTIC LAMINATE COUNTER, 3/4" HIGH
  - 4 24" DEEP BASE CABINET, DOORS, DRAWERS AND ADJUSTABLE SHELVES AS SHOWN, PLASTIC LAMINATE AT ALL EXPOSED TO VIEW SURFACES
  - 5 12" DEEP (U.O.N.) UPPER CABINET, DOORS AND ADJUSTABLE SHELVES AS SHOWN, PLASTIC LAMINATE AT ALL EXPOSED TO VIEW SURFACES
  - 6 OFCI REFRIGERATOR WITH ICE MAKER, REFER TO ELECTRICAL AND PLUMBING DESIGN/BUILD DRAWINGS
  - 7 OFCI WASHER AND DRYER, REFER TO ELECTRICAL AND PLUMBING DESIGN/BUILD DRAWINGS
  - 8 GLASS DISPLAY SHELVES
  - 9 STAINLESS STEEL SINK, REFER TO PLUMBING DESIGN/BUILD DRAWINGS
  - 10 PLASTIC LAMINATE COUNTERTOP WITH 4" BACKSLASH (U.O.N.) AT ALL WALLS
  - 11 OFCI MICROWAVE, REFER TO ELECTRICAL DESIGN/BUILD DRAWINGS
  - 12 PLASTIC LAMINATE STORAGE CABINET AS SHOWN, ADJUSTABLE SHELVES AS SHOWN, LOCK, TYP.



4 TYPICAL HOLLOW METAL HEAD  
SCALE: 3" = 1'-0"

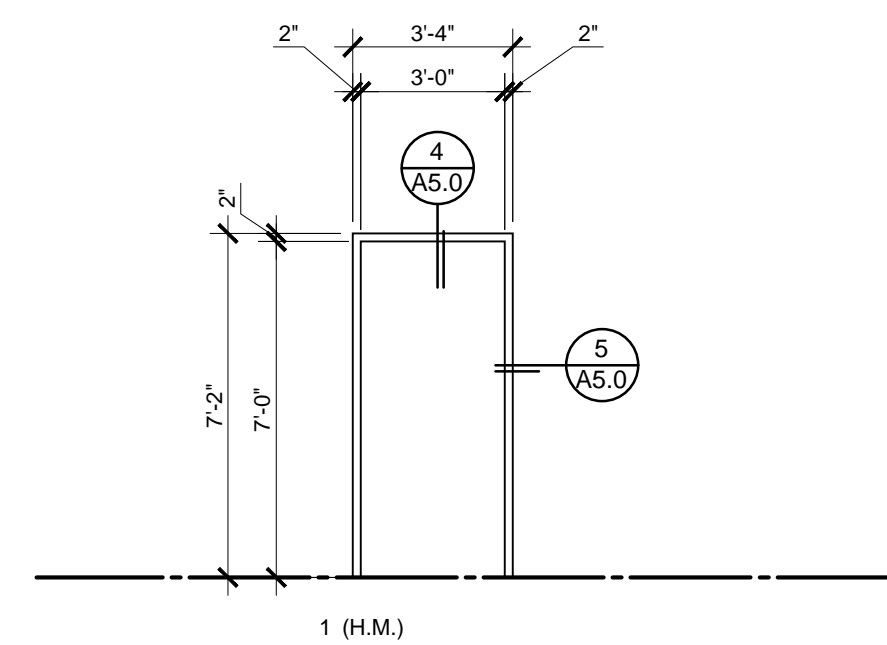


5 TYPICAL HOLLOW METAL JAMB  
SCALE: 3" = 1'-0"



6 DOOR TYPES  
SCALE: 1/4" = 1'-0"

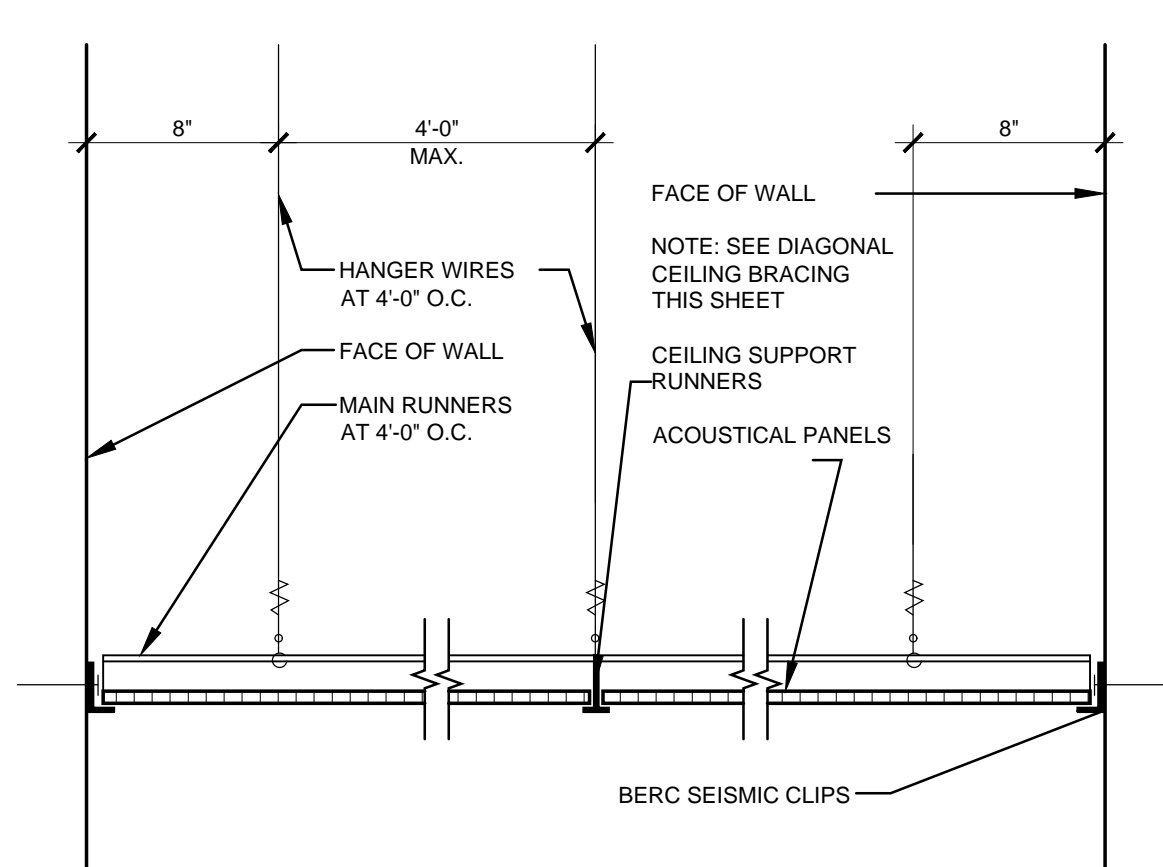
NOTE:  
DIMENSIONS AREA ROUGH OPENINGS. JOINT SIZES PER  
DETAILS TO BE USED TO DETERMINE ACTUAL FRAME SIZE



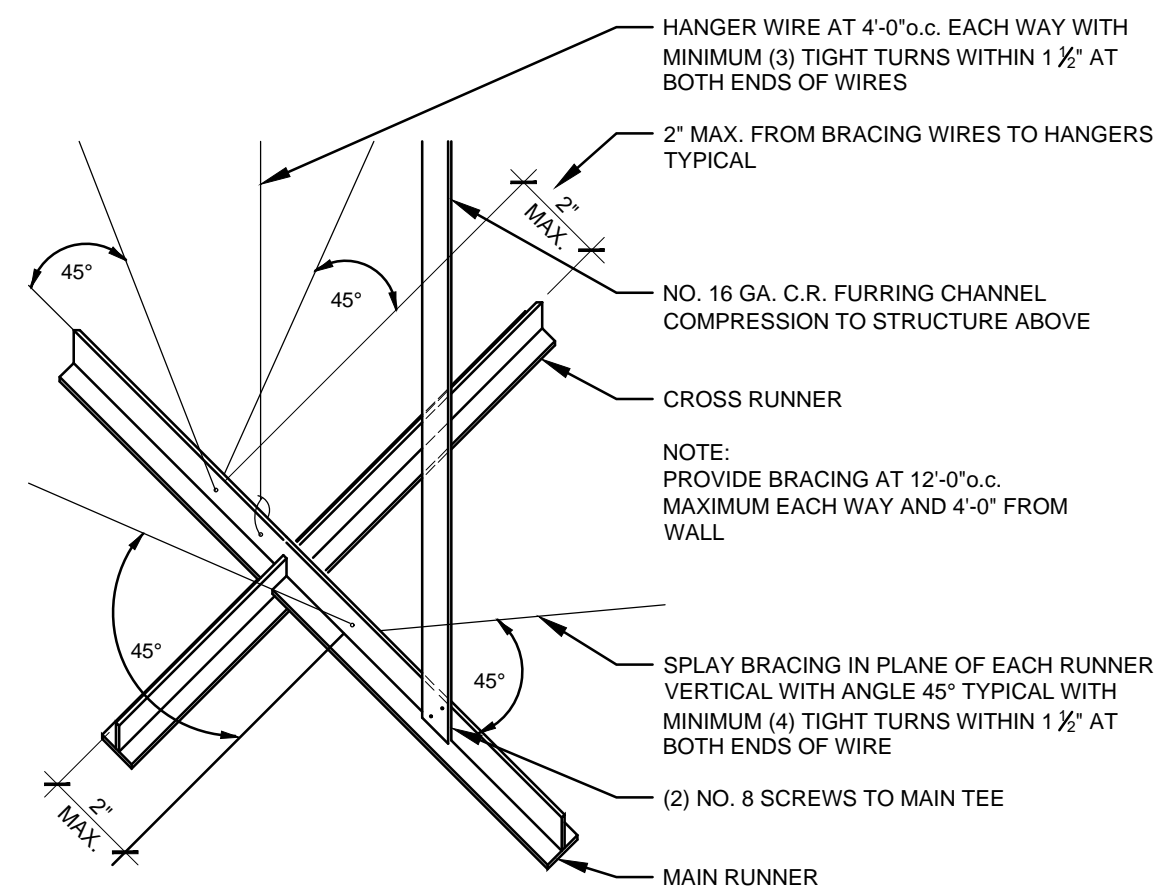
7 FRAME TYPES  
SCALE: 1/4" = 1'-0"

ALL DOORS 1-3/4" THICK UNLESS OTHERWISE NOTED  
RE-USE EXISTING DOORS AS FRAMES AT INTERIOR LOCATIONS  
DOOR SCHEDULE - PROJECT 2023.0036

	DOOR				FRAME			DETAILS SHEET A5.0					
NO.	NOMINAL SIZE	TYPE	MAT'L	GLASS	TYPE	MAT'L	GLASS	H	J	S	HDWR. GROUP	LABEL MIN.	REMARKS
103	3'-0" x 7'-0"	A	WD	-	1	HM	-	4	5	-	-	-	
104	3'-0" x 7'-0"	A	WD	-	1	HM	-	4	5	-	-	-	
105	3'-0" x 7'-0"	A	WD	-	1	HM	-	4	5	-	-	-	
106	3'-0" x 7'-0"	A	WD	-	1	HM	-	4	5	-	-	-	
107	3'-0" x 7'-0"	A	WD	-	1	HM	-	4	5	-	-	-	
108	3'-0" x 7'-0"	A	WD	-	1	HM	-	4	5	-	-	-	
109	3'-0" x 7'-0"	A	WD	-	1	HM	-	4	5	-	-	-	
111	3'-0" x 7'-0"	A	WD	-	1	HM	-	4	5	-	-	-	
113	3'-0" x 7'-0"	A	WD	-	1	HM	-	4	5	-	-	-	OCCUPANCY INDICATOR




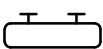

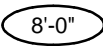

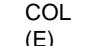
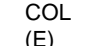
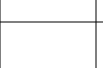


**1 SUSPENDED ACOUSTICAL CEILING**  
SCALE: 1 1/2" = 1'-0"



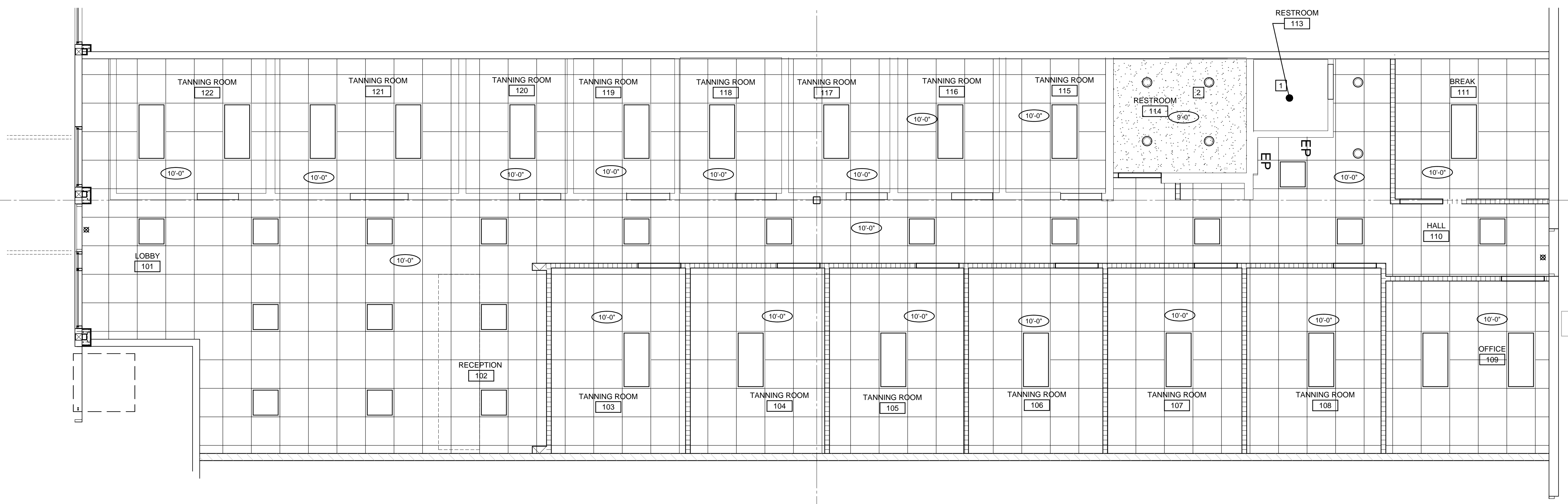
**2 SUSPENDED ACOUSTICAL CEILING BRACING**  
SCALE: N.T.S.

**SYMBOL LEGEND:**

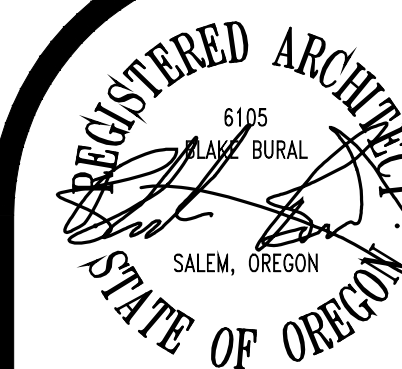
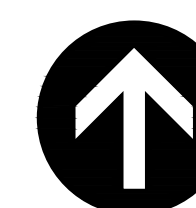
-  NEW SUSPENDED 5/8" GYPSUM WALLBOARD TYPE 'X' CEILING FINISH, U.O.N. BIDDER TO INCLUDE ENGINEERING REQUIRED (IF ANY) TO SUSPEND FROM AN EXISTING SUSPENDED CEILING ABOVE
-  MECHANICAL DESIGN FOR SUPPLY AND EXHAUST, NOT SHOWN, REFER TO MECHANICAL DESIGN/BUILD DRAWINGS
-  (E)  EXISTING WALL AND/OR CEILING MOUNTED EXIT LIGHT, REFER TO ELECTRICAL DESIGN/BUILD DRAWING
-  NEW LIGHT FIXTURES, REFER TO ELECTRICAL DESIGN/BUILD DRAWING
-  8'-0" CEILING HEIGHT (A.F.F.)
-   NEW EXIT SIGN WITH BATTERY BACKUP EMERGENCY LIGHTING, REFER TO ELECTRICAL DESIGN/BUILD DRAWING
-  COL (E) EXISTING COLUMN TO REMAIN
-  NEW 2X2 SUSPENDED ACOUSTICAL TILE CEILING 1 2  
A6.0 A6.0

**REFERENCE NOTES:**

- 1 EXISTING CEILING, PAINT
- 2 NEW SUSPENDED GYPSUM BOARD CEILING, PAINT



**3 TENANT REFLECTED CEILING PLAN**  
SCALE: 1/4" = 1'-0"



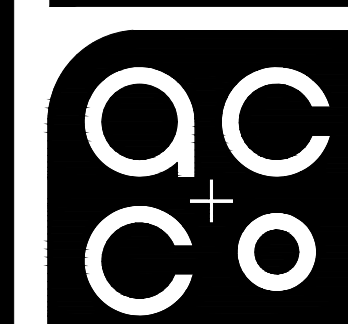
In the event conflicts are discovered between the original signed and sealed documents prepared by the Architects and/or their Consultants, and any copy of the documents transmitted by mail, fax, electronically or otherwise, the original signed and sealed documents shall govern.

JOB NO. 2023.0036

DATE APRIL 17, 2023

DRAWN LMM

REVISIONS



ARCHITECTURE  
COMMUNITY  
1100 Liberty Street SE  
Suite 200  
Salem, OR 97302  
P: 503.561.4114  
www.accoac.com

CYPRESS CENTER  
TAN REPUBLIC TI

1434 LANCASTER DRIVE NE  
SALEM, OREGON 97301

SHEET

A6.0