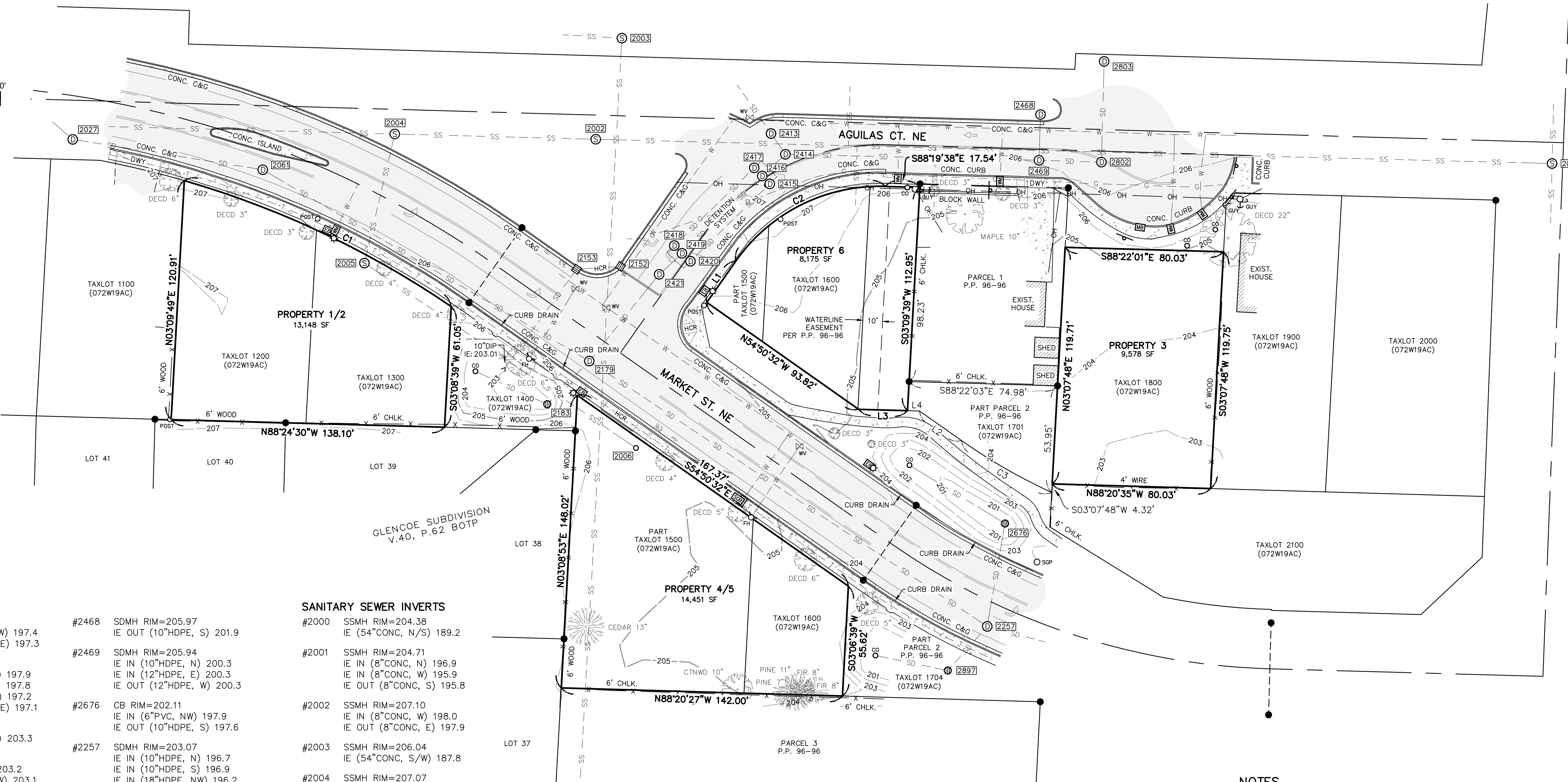




0' 30' 60'  
SCALE: 1 INCH = 30 FEET



**STORM DRAIN INVERTS**

#2027	SDMH RIM=206.89 IE IN (12"HDPE, NW) 197.4 IE OUT (18"HDPE, E) 197.3	#2468	SDMH RIM=205.97 IE OUT (10"HDPE, S) 201.9
#2061	SDMH RIM=206.66 IE IN (12"HDPE, N) 197.9 IE IN (10"HDPE, S) 197.8 IE IN (18"HDPE, W) 197.2 IE OUT (18"HDPE, E) 197.1	#2469	SDMH RIM=205.94 IE IN (10"HDPE, N) 200.3 IE IN (12"HDPE, E) 200.3 IE OUT (12"HDPE, W) 200.3
#2152	CB RIM=204.99 IE OUT (10"DIP, W) 203.3	#2676	CB RIM=202.11 IE IN (6"PVC, NW) 197.9 IE OUT (10"HDPE, S) 197.6
#2153	CB RIM=205.49 IE IN (10"DIP, E) 203.2 IE OUT (10"DIP, SW) 203.1	#2257	SDMH RIM=203.07 IE IN (10"HDPE, N) 196.7 IE IN (10"HDPE, S) 196.9 IE IN (18"HDPE, NW) 196.2 IE OUT (18"HDPE, E) 196.1
#2179	SDMH RIM=205.66 IE IN (12"HDPE, NE) 197.2 IE IN (10"HDPE, SW) 197.4 IE IN (18"HDPE, NW) 196.6 IE OUT (18"HDPE, SE) 196.6	#2897	CB RIM=201.97 IE IN (6"PVC, NW) 197.9 IE OUT (10"HDPE, NE) 197.7
#2183	CB RIM=204.41 IE IN (6"PVC, NW) 198.6 IE OUT (10"HDPE, NE) 198.0	#2418	SDMH RIM=205.85 IE (36"HDPE, NE/SW) 197.6
#2413	SDMH RIM=206.71 IE IN (10"DIP, NW) 202.3 IE OUT SE NOT ACCESSIBLE	#2419	SDMH RIM=205.86 IE (36"HDPE, NE/SW) 197.6
#2414	SDMH RIM=206.89 IE IN (10"DIP, NW) 199.9 IE IN (12"HDPE, E) 200.0 IE OUT (12"HDPE, SW) 199.8	#2420	SDMH RIM=205.84 IE (36"HDPE, NE/SW) 197.6
#2415	SDMH RIM=207.14 IE (36"HDPE, NE/SW) 197.7	#2421	SDMH RIM=205.42 IE IN (12"HDPE, NE) 197.6 IE OUT (12"PVC, SE) 197.4
#2416	SDMH RIM=207.17 IE (36"HDPE, NE/SW) 197.7	#2802	SDMH RIM=205.79 IE IN (10"HDPE, N) 200.6 IE OUT (12"HDPE, W) 200.5
#2417	SDMH RIM=207.22 IE (36"HDPE, NE/SW) 197.7	#2803	SDMH RIM=205.09 IE OUT (10"HDPE, S) 201.0

**SANITARY SEWER INVERTS**

#2000	SSMH RIM=204.38 IE (54"CONC, N/S) 189.2	#2001	SSMH RIM=204.71 IE IN (8"CONC, N) 196.9 IE IN (8"CONC, W) 195.9 IE OUT (8"CONC, S) 195.8
#2002	SSMH RIM=207.10 IE IN (8"CONC, W) 198.0 IE OUT (8"CONC, E) 197.9	#2003	SSMH RIM=206.04 IE (54"CONC, S/W) 187.8
#2004	SSMH RIM=207.07 IE IN (8"CONC, W) 198.6 IE IN (8"PVC, S) 198.8 IE OUT (8"CONC, E) 198.5	#2005	SSMH RIM=206.37 IE IN (8"PVC, SE) 199.3 IE OUT (8"PVC, N) 199.1
#2006	SSCO RIM=205.67 IE OUT (8"PVC, NW) 199.9		

**CURVE TABLE**

CURVE #	LENGTH	RADIUS	DELTA	CH. BEARING	CH. LEN.
C1	149.61'	470.00'	18°14'17"	S64°43'37"E	148.98'
C2	87.79'	89.00'	56°30'54"	N63°24'55"E	84.27'
C3	52.55'	287.00'	10°29'26"	S60°05'15"E	52.47'

**LINE TABLE**

LINE #	DIRECTION	LENGTH
L1	N35°09'28"E	25.53'
L2	N54°50'32"W	26.00'
L3	N88°24'30"W	24.67'
L4	N88°24'30"W	6.08'

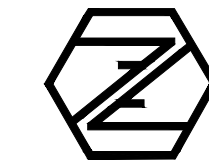
**LEGEND**

- FOUND MONUMENT
- ⊙ STORM DRAIN MANHOLE
- ▣ CATCH BASIN
- ⊕ CATCH BASIN ROUND
- > CULVERT
- ⊙ SANITARY SEWER MANHOLE
- ∞∞ CLEANOUT
- Ⓜ WATER METER
- Ⓜ WATER VALVE
- Ⓜ FIRE HYDRANT
- Ⓜ ELECTRICAL BOX
- Ⓜ LIGHT POLE
- Ⓜ UTILITY POLE
- Ⓜ GUY WIRE
- Ⓜ TRAFFIC SIGNAL BOX
- Ⓜ TRAFFIC SIGNAL POLE
- Ⓜ SIGN
- Ⓜ MISC. POST
- Ⓜ MAILBOX
- ▣ CONCRETE
- ▣ ASPHALT
- Ⓜ DECIDUOUS TREE & TRUNK SIZE
- Ⓜ CONIFEROUS TREE & TRUNK SIZE
- SS --- SEWER LINE UNDERGROUND
- SD --- STORM LINE UNDERGROUND
- W --- WATERLINE UNDERGROUND
- G --- GAS LINE UNDERGROUND
- T --- COMMUNICATION LINE UNDERGROUND
- OH --- OVERHEAD POWER LINE
- X --- FENCE LINE
- CONC CONCRETE
- SF SQUARE FEET
- BOTP BOOK OF TOWN PLATS
- C&G CURB & GUTTER

**NOTES**

- BASIS OF BEARINGS AND COORDINATE SYSTEM IS BASED ON THE OREGON STATE PLANE NORTH ZONE, NAD83(2011), EPOCH 2010.00. ALL DISTANCES SHOWN HEREON ARE GROUND DISTANCES.
- ALL BOUNDARY LINES SHOWN HEREON ARE PRELIMINARY IN NATURE AND SUBJECT TO CHANGE. THE CITY OF SALEM IS CURRENTLY IN THE PROCESS OF ADJUSTING PROPERTY LINES AND DEDICATING RIGHT OF WAY TO CONSOLIDATE AND CREATE PROPERTY CONFIGURATIONS AS SHOWN. BOUNDARY LINES SHOWN WERE RESOLVED BY A COMBINATION OF SURVEY RECORDS ALONG WITH DATA OBTAINED BY THE CITY OF SALEM'S CONSULTANT CONTRACTED TO COMPLETE SAID ADJUSTMENTS AND DEDICATIONS.
- ELEVATIONS WERE ESTABLISHED BY RTK GPS OBSERVATIONS TO CITY OF SALEM BENCHMARK "6030". MARK IS AN ALUMINUM DISK IN THE CURB AT THE SOUTHWEST CORNER OF LANCASTER DRIVE NE AND SUNNYVIEW ROAD NE. ELEVATION = 203.97' (NGVD29, CITY OF SALEM DATUM)
- THE LOCATION OF UTILITIES SHOWN HEREON ARE FROM OBSERVED VISIBLE EVIDENCE OF ABOVE GROUND APPURTENANCES ALONG WITH SURFACE UTILITY MARKINGS BY OTHERS. ALL UNDERGROUND UTILITIES SHOWN WERE MARKED ON THE SURFACE BY AN "OREGON ONE-CALL NOTIFICATION CENTER" REQUEST. SURVEYOR MAKES NO GUARANTEE AS TO THE ACCURACY OF SAID MARKINGS, HOWEVER, THEY ARE LOCATED AS ACCURATELY AS THEY ARE MARKED ON THE GROUND.
- PER ORS 209.150, ANY SURVEY MONUMENT REMOVED, DISTURBED OR DESTROYED SHALL BE REPLACED BY A PROFESSIONAL LAND SURVEYOR WITHIN 90 DAYS AT THE EXPENSE OF THE PERSON OR PUBLIC AGENCY RESPONSIBLE FOR SAID REMOVAL, DISTURBANCE OR DESTRUCTION.
- FIELD SURVEYED OCTOBER, 2021.

**FORTY FIVE NORTH SURVEYING, LLC**



7230 3rd Street SE #145, Turner, OR 97392  
P: (503) 558-3330 E: info@fmsurveying.com

**TOPOGRAPHIC SURVEY FOR: UNITED WAY**

IN THE NE 1/4 OF SECTION 19, T.7S., R.2W., W.M.  
CITY OF SALEM, MARION COUNTY, OREGON

REGISTERED PROFESSIONAL LAND SURVEYOR  
OREGON 2017  
SEPTEMBER 12, 2017  
STEVEN J. ROWELL  
91569  
RENEWS: 6-30-2023

REVISIONS	NO.	DATE	DESCRIPTION
	0	220021	INITIAL RELEASE

JOB NO. 21-303

SHEET 1/1