

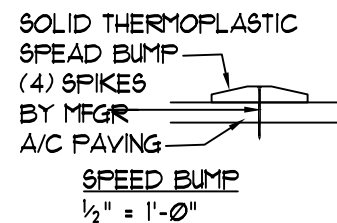
406.1 General. Curb ramps on accessible routes shall comply with Sections 406, 405.2, 405.3, and 405.10.

406.2 Counter Slope. Counter slopes of adjoining gutters and road surfaces immediately adjacent to the curb ramp shall not be steeper than 1:20. The adjacent surfaces at transitions at curb ramps to walks, gutters and streets shall be at the same level.

406.3 Sides of Curb Ramps. Where provided, curb ramp flares shall not be steeper than 1:10.

406.4 Width. Curb ramps shall be 36 inches (915 mm) minimum in width, exclusive of flared sides.

406.5 Floor Surface. Floor surfaces of curb ramps shall comply with Section 302.

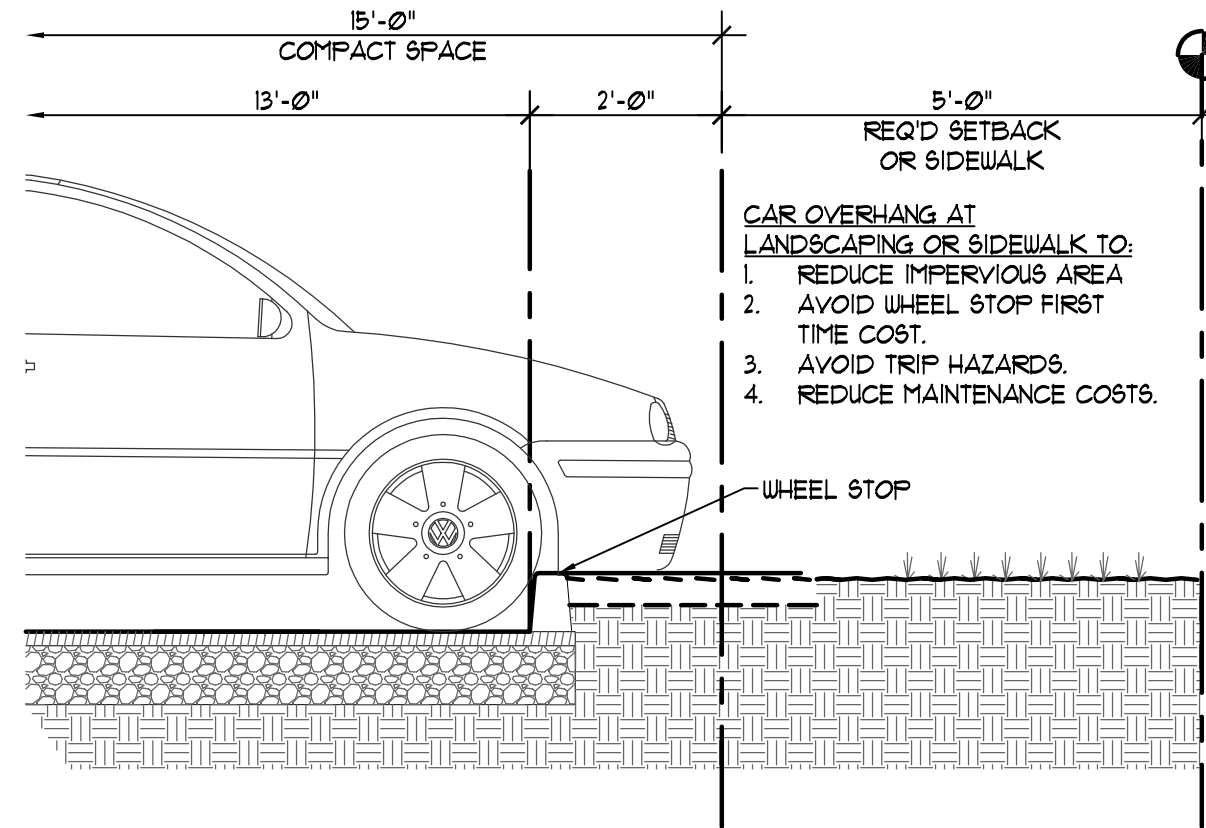


AT-GRADE PEDESTRIAN CROSSING

WHITE STRIPING AND PAVEMENT STENCIL REQUIRED

SCALE: 1/8" = 1'-0"

M:\023\SITE\W\500\PM\RK\02580 AT-GRADE PEDESTRIAN CROSSING



CAR OVERHANG AT LANDSCAPING OR SIDEWALK

SCALE: 1/2" = 1'-0"