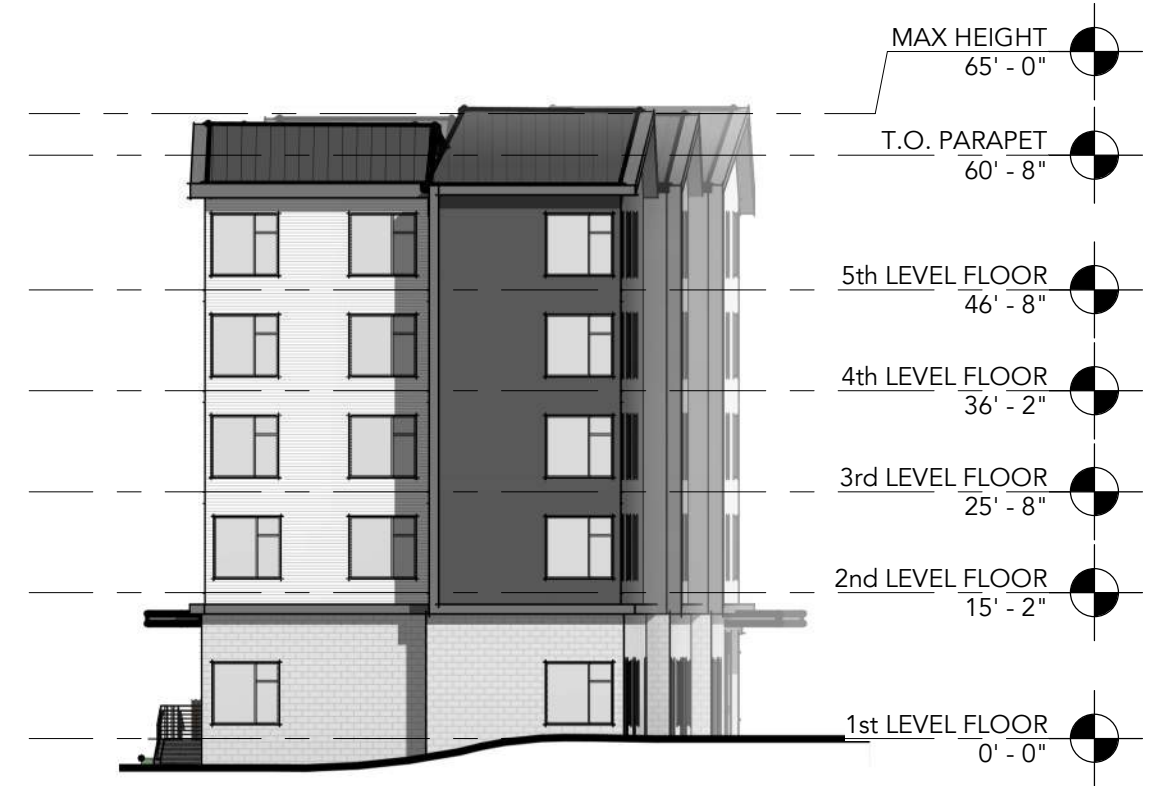
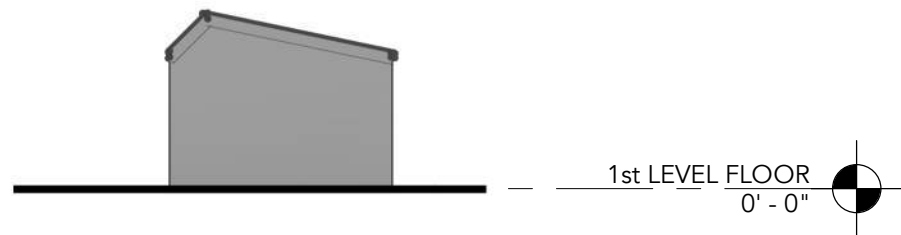




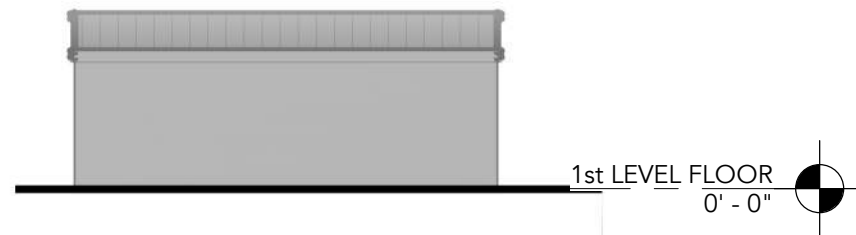
1 SOUTH ELEVATION
SCALE: 1" = 20'-0"



2 WEST ELEVATION
SCALE: 1" = 20'-0"



3 OFFICE - SOUTH ELEVATION
SCALE: 1/16" = 1'-0"



4 OFFICE - WEST ELEVATION
SCALE: 1/16" = 1'-0"