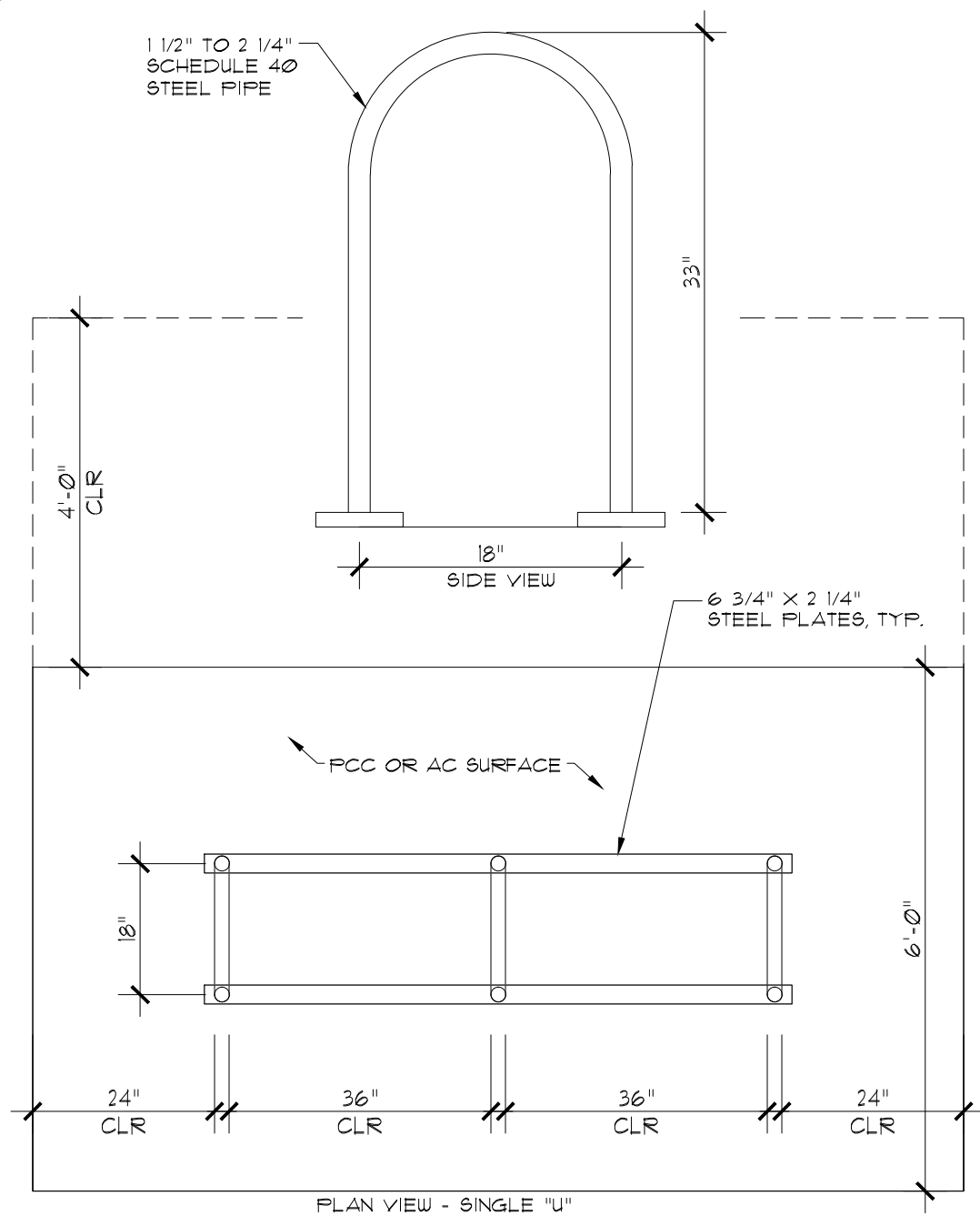


## TRASH ENCLOSURE

1

SCALE: 1/4" = 1'-0"

M:/026SITEWK/0111TRASH/02011 TRASH CMU



### NOTES

- BIKE RACKS SHALL HAVE A GLOSS BLACK POLYESTER POWDER COAT FINISH.
- MOUNTING RAILS SHALL BE FURNISHED WITH MOUNTING HOLES AND VANDAL RESISTENT CONCRETE ANCHOR MOUNTING HARDWARE.
- EACH "U" SHALL BE WELDED OR MOUNTED TO RAILS OR PLATES WITH VANDAL RESISTANT OR HIDDEN FASTENERS.
- FOR SINGLE "U" INSTALLATION, EACH MOUNTING PLATE WILL BE EQUIPPED WITH TWO ANCHOR BOLT HOLES EACH.

## BICYCLE PARKING RACK DETAIL

2

SCALE: 1" = 1'-0"

M:/026SITEWK/600PIPING/02600 BIKE RACK

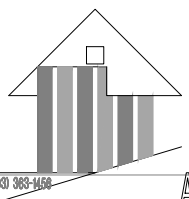
SPR 5

DATE: 9 JAN 2023  
DRAWN: gjm  
JOB NO.: 2207

Site Plan Review Class 3

Fahlman Glaze Apartments

1341 Waller St., Salem, Or



RONALD  
JAMES  
PED

ARCHITECT P.C.

1500 363-1456