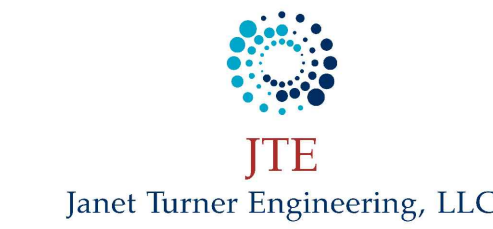




CONSULTANTS



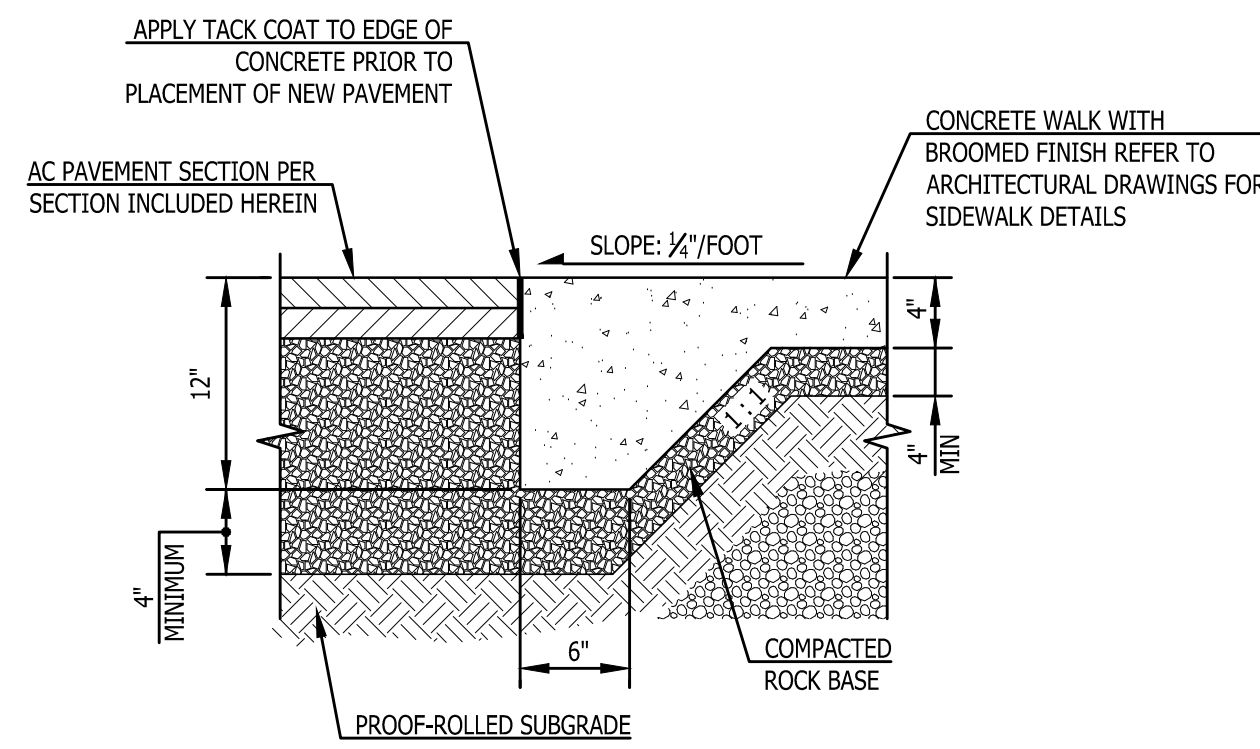
Mark	Date	Description

DATE: 03/22/2023

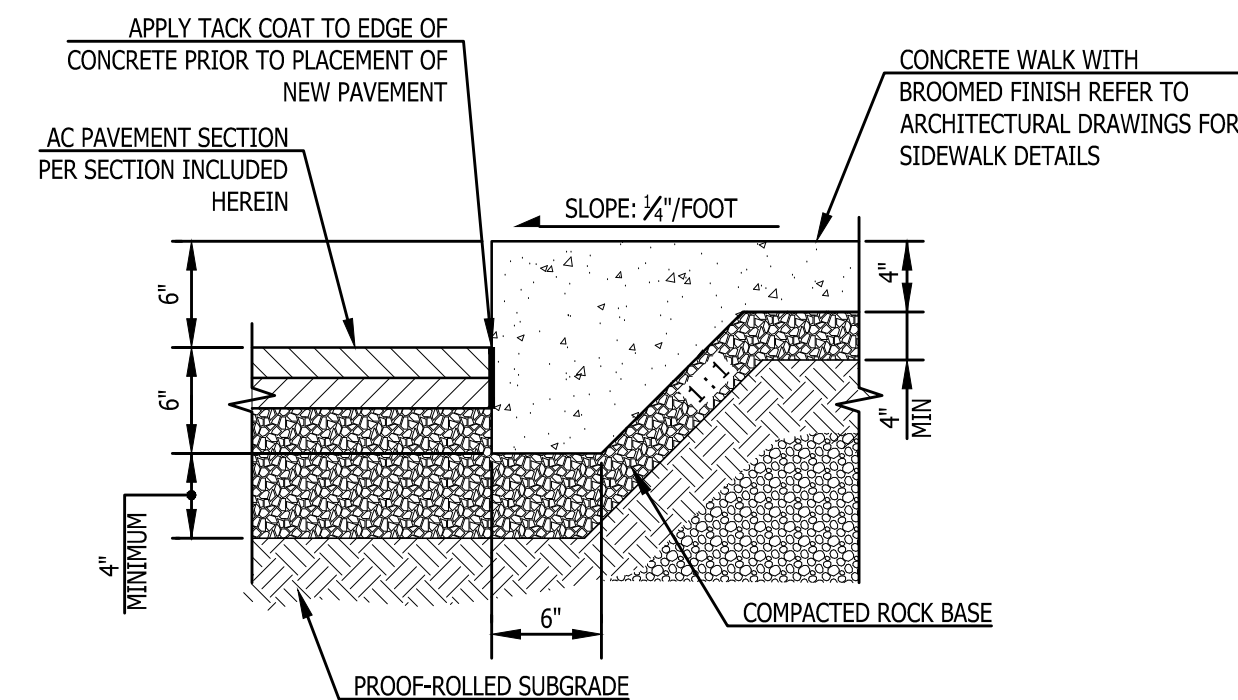
ISSUE TITLE:
CIVIL DETAILS

SCALE:

C5.0
SITE REVIEW



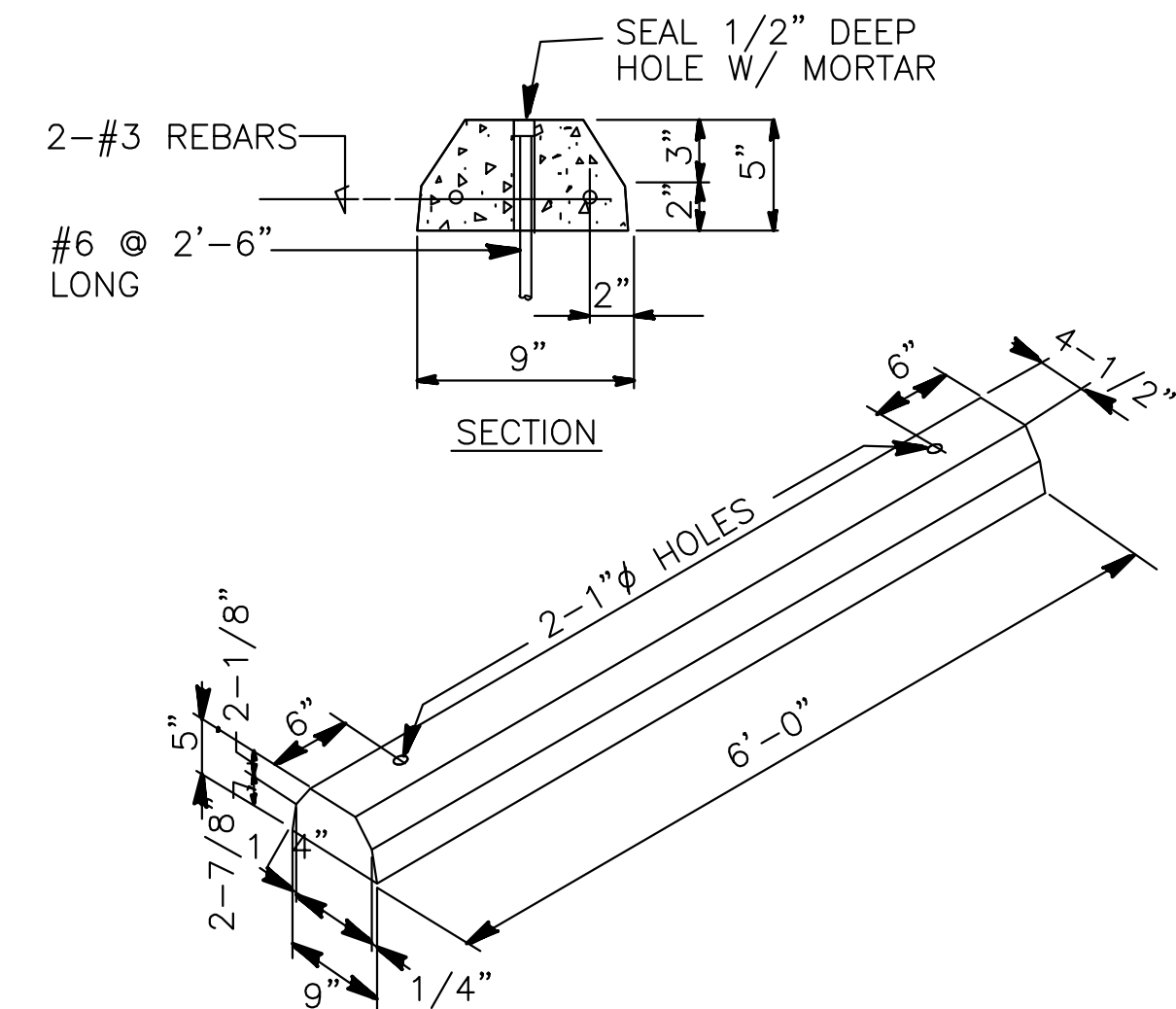
FLUSH PAVEMENT/SIDEWALK



6" CURB EXPOSURE

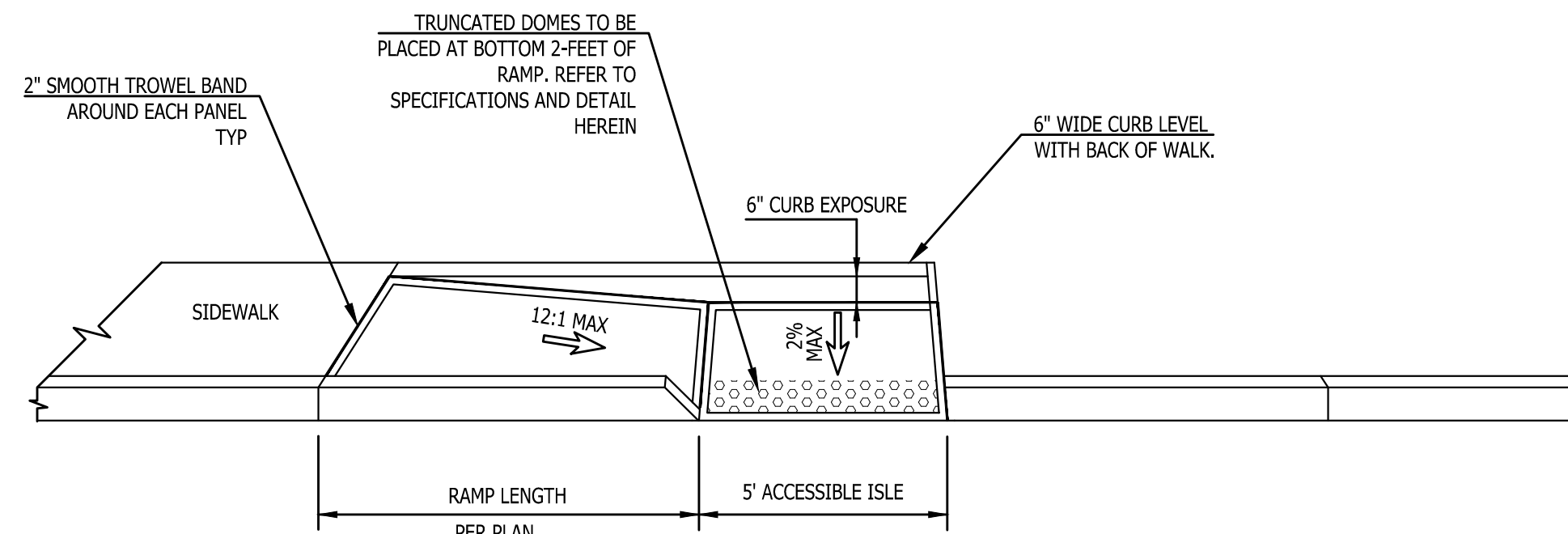
1 THICKENED EDGE SIDEWALK

NO SCALE



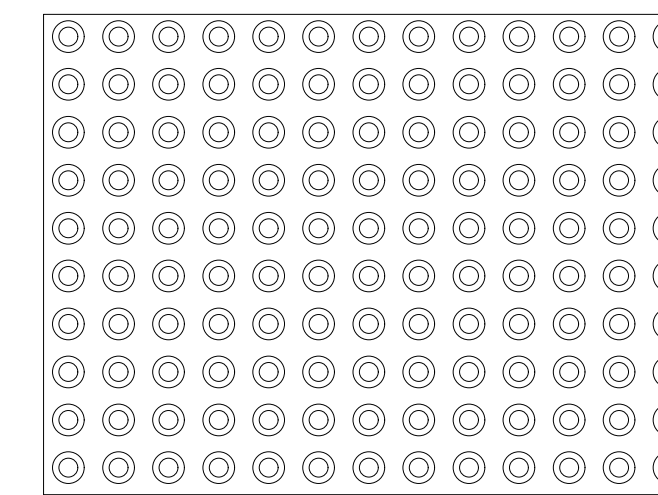
2 CONCRETE WHEEL STOP

NO SCALE

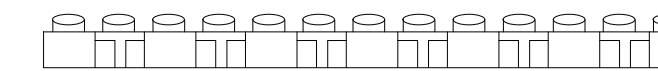


3 ACCESSIBLE RAMP

NO SCALE

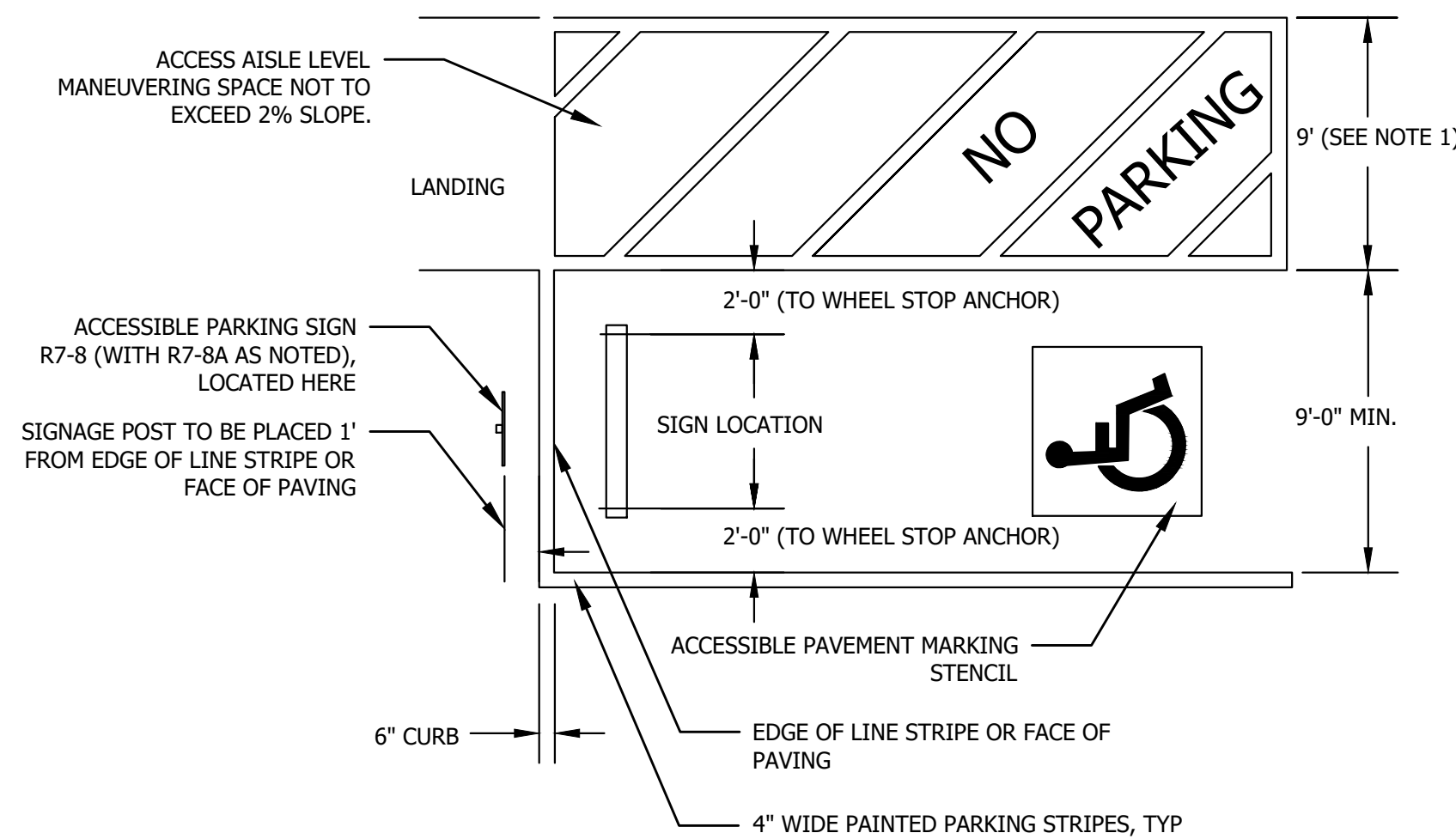


TOP OF PANEL



ELEVATION

TRUNCATED DOME DETAIL



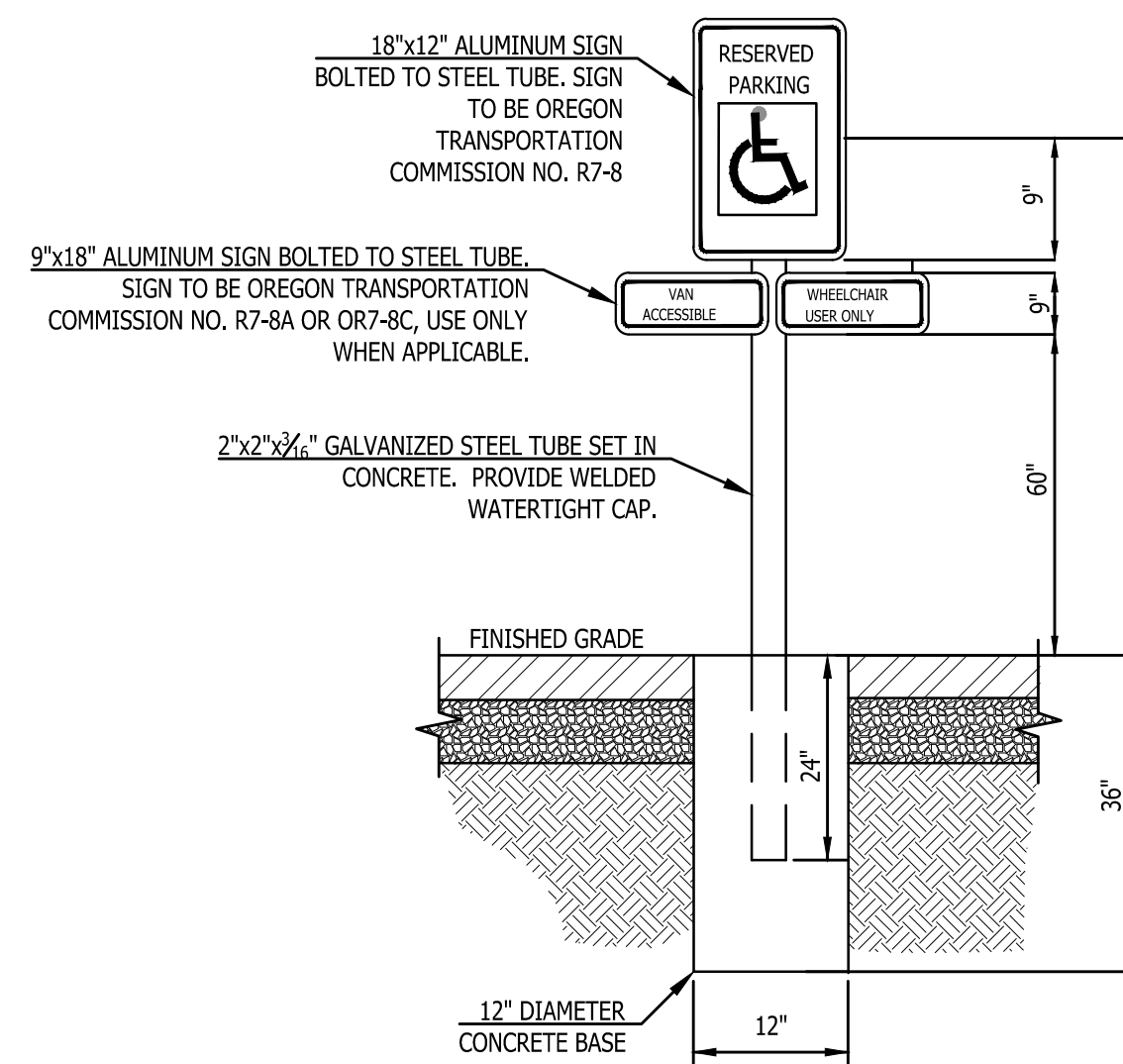
NOTES:

1. WHEN MORE THAN 2 ACCESSIBLE SPACES ARE DEVELOPED, 8-FOOT MINIMUM WIDE STRIPED AISLE REQUIRED ADJACENT TO VAN ACCESSIBLE ADA SPACE. ADDITIONAL STRIPED AISLES CAN BE 6-FEET IN WIDTH.

2. ENSURE "NO PARKING" WHITE STENCIL IS INCLUDED IN STRIPED AISLE SPACE AS SHOWN, OTHERWISE INSTALLATION OF SEPARATE ACCESSIBLE AISLE SIGN, OR7-9, WILL BE REQUIRED.

4 ACCESSIBLE PARKING STRIPING

NO SCALE



NOTES

- COORDINATE LOCATION WITH ARCHITECT PRIOR TO INSTALLATION.
- LOCATE FACE OF SIGN 18" FROM FACE OF CURB OR AS SHOWN ON THE PLANS.

5 ACCESSIBLE PARKING SIGN INSTALLATION

NO SCALE