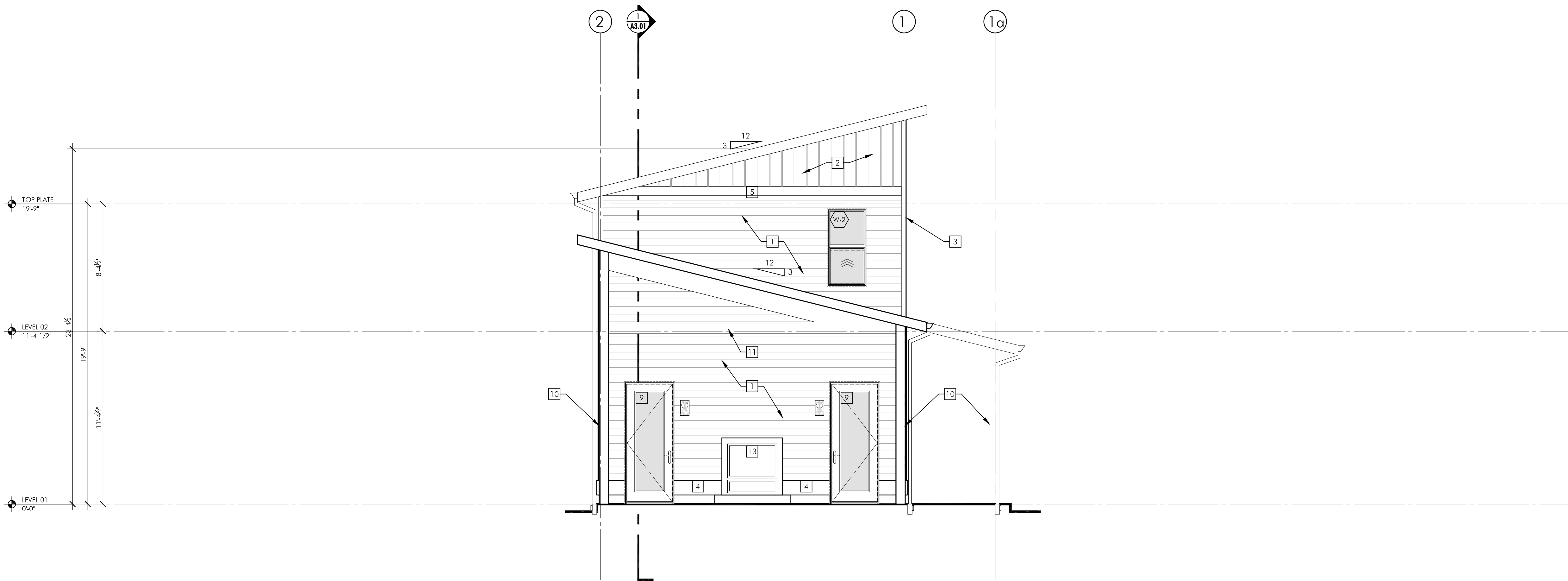




**1** CLUBHOUSE - WEST ELEVATION



**2** CLUBHOUSE - NORTH ELEVATION

### ELEVATION NOTES:

- 1 HORIZONTAL LAPPED FIBER CEMENT SIDING, 6" EXPOSURE, SEE COLOR SCHEME FOR SPECIFIC COLOR.
- 2 VERTICAL FIBER CEMENT BOARD & BATT, SEE COLOR SCHEME FOR SPECIFIC COLOR.
- 3 4" TRIM BOARD AT ALL EXTERIOR CORNERS, SEE COLOR SCHEME FOR SPECIFIC COLOR.
- 4 1 1/4" TRIM BOARD, SEE COLOR SCHEME FOR SPECIFIC COLOR.
- 5 7/8" TRIM BOARD, SEE COLOR SCHEME FOR SPECIFIC COLOR.
- 6 2x8 WOOD FASCIA BOARD, PAINTED, SEE COLOR SCHEME FOR SPECIFIC COLOR.
- 7 COMPOSITION SHINGLE ROOFING
- 8 WALL PACK LIGHT. SEE LIGHT SCHEDULE ON A6.01
- 9 FIBERGLASS CLAD ENTRY OR PATIO DOOR, PAINTED, SEE COLOR SCHEME FOR SPECIFIC COLOR.
- 10 POST PER STRUCTURAL, PAINTED, SEE COLOR SCHEME FOR SPECIFIC COLOR.
- 11 BEAM PER STRUCTURAL, PAINTED, SEE COLOR SCHEME FOR SPECIFIC COLOR.
- 12 MAINTENANCE ROOM.
- 13 DUAL-SIDED FIREPLACE.
- 14 CLUBHOUSE PATIO.

### COLOR SCHEME:

LOWER BODY LAP SIDING TO BE COLOR #1  
MID AND UPPER BODY LAP SIDING TO BE COLOR #2  
BOARD & BATT TO BE COLOR #2  
PANELING TO BE COLOR #2  
ALL TRIM AT CORNERS AND DOORS TO BE COLOR #3  
BELLY BAND TO BE COLOR #3  
DOWNSPOUTS TO MATCH COLOR BEHIND THEM  
ALL GUTTERS TO BE COLOR #3  
SOFFITS AND FASCIA TO BE COLOR #3  
RAILINGS AND DECKS TO BE COLOR #4