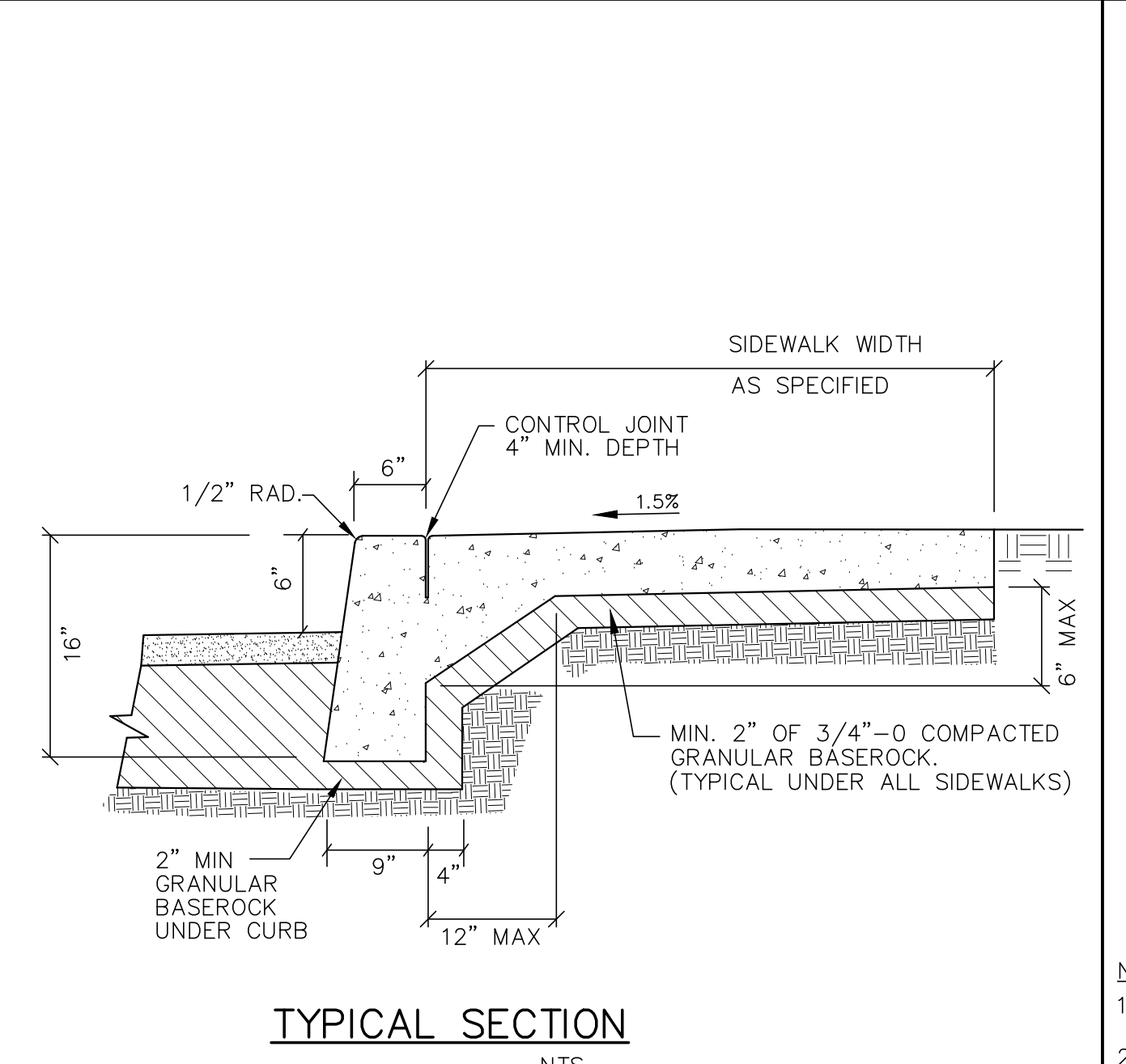
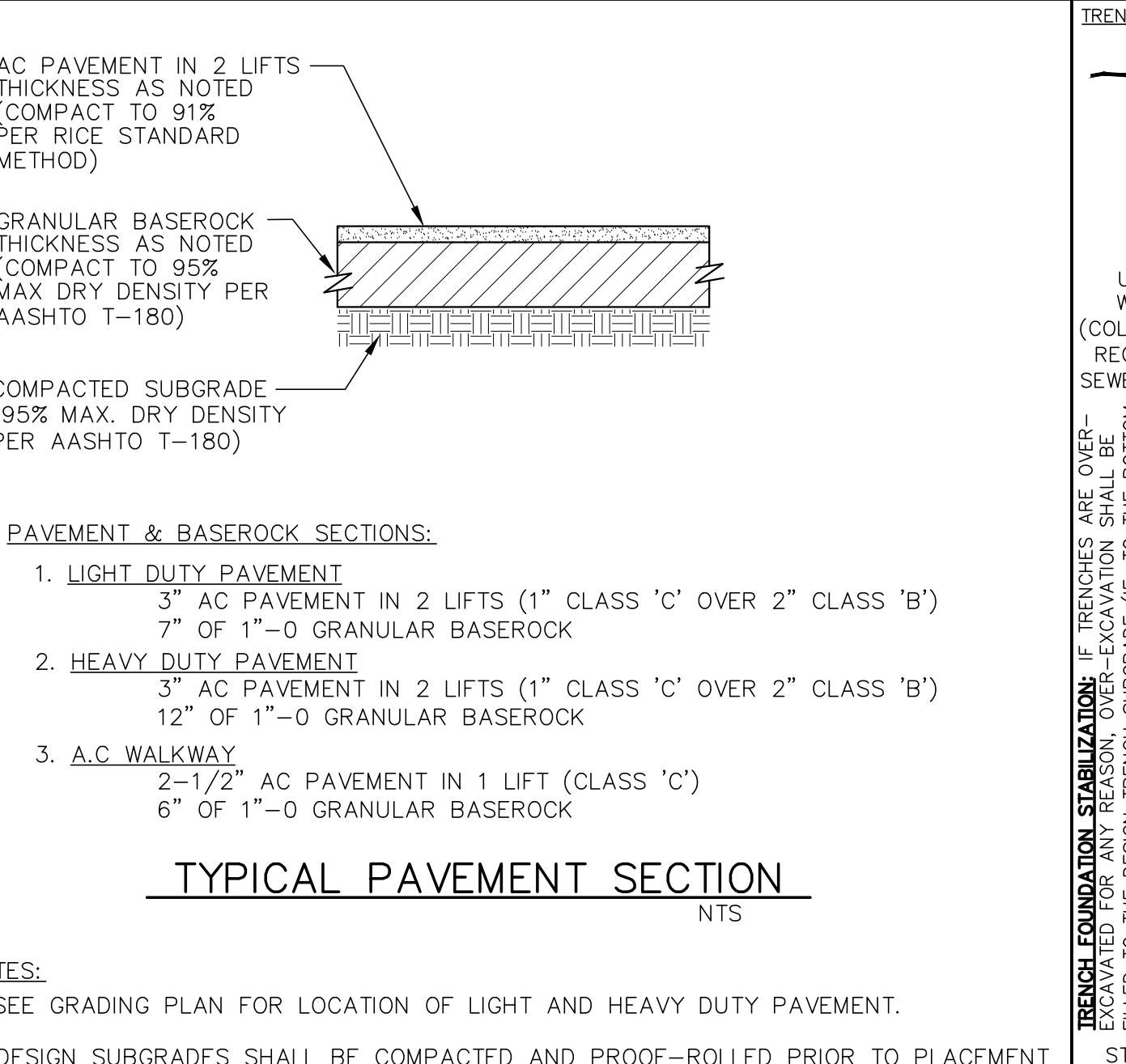


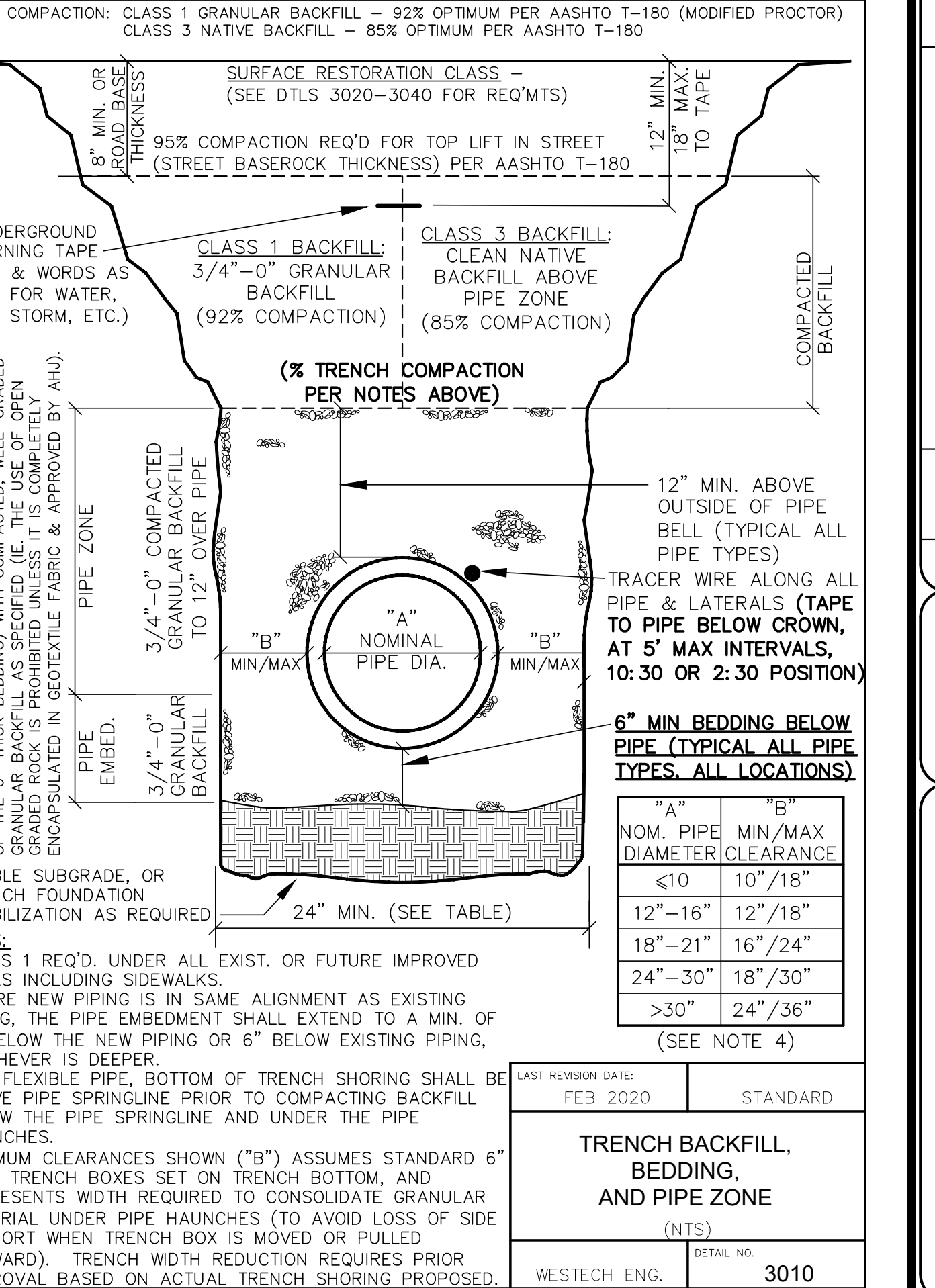
NOTES:	
1. 7" CURB EXPOSURE FOR ARTERIAL & COLLECTOR STREETS TYPICAL WHERE TYPE C CURB IS ALLOWED.	
6" EXPOSURE ALL OTHER PUBLIC STREETS, PRIVATE STREETS & PARKING LOTS.	
2. A CONTRACTION JOINT SHALL BE PLACED ACROSS SIDEWALK OVER WEEP HOLE PIPE.	
3. ALL CONCRETE SHALL BE 3300 PSI @ 28 DAYS.	
4. WHERE SIDEWALKS ARE TO BE CONSTRUCTED, EXTEND 3" PIPE TO BACK OF SIDEWALK LOCATION & INSTALL COUPLING AT ALL WEEPHOLE LOCATIONS.	
5. INSTALL MIN. 2 WEEP HOLES ON ALL LOTS. ONE TO BE AT LOW POINT OF LOT, 5' FROM P/L. WEEP HOLES IN EXISTING CURBS SHALL BE CORE DRILLED.	
6. UNLESS APPROVED IN WRITING BY AGENCY WITH JURISDICTION, MONOLITHIC CURB & PUBLIC SIDEWALK OR DRIVEWAY APRON PLACEMENT IS NOT PERMITTED (IE. CURB CONCRETE & SIDEWALK OR DRIVEWAY CONCRETE SHALL BE PLACED SEPARATELY).	
LAST REVISION DATE:	JO #
JULY 2017	STANDARD
STANDARD TYPE 'C' CURB	
(NTS)	
WESTECH ENG.	DETAIL NO. 2110



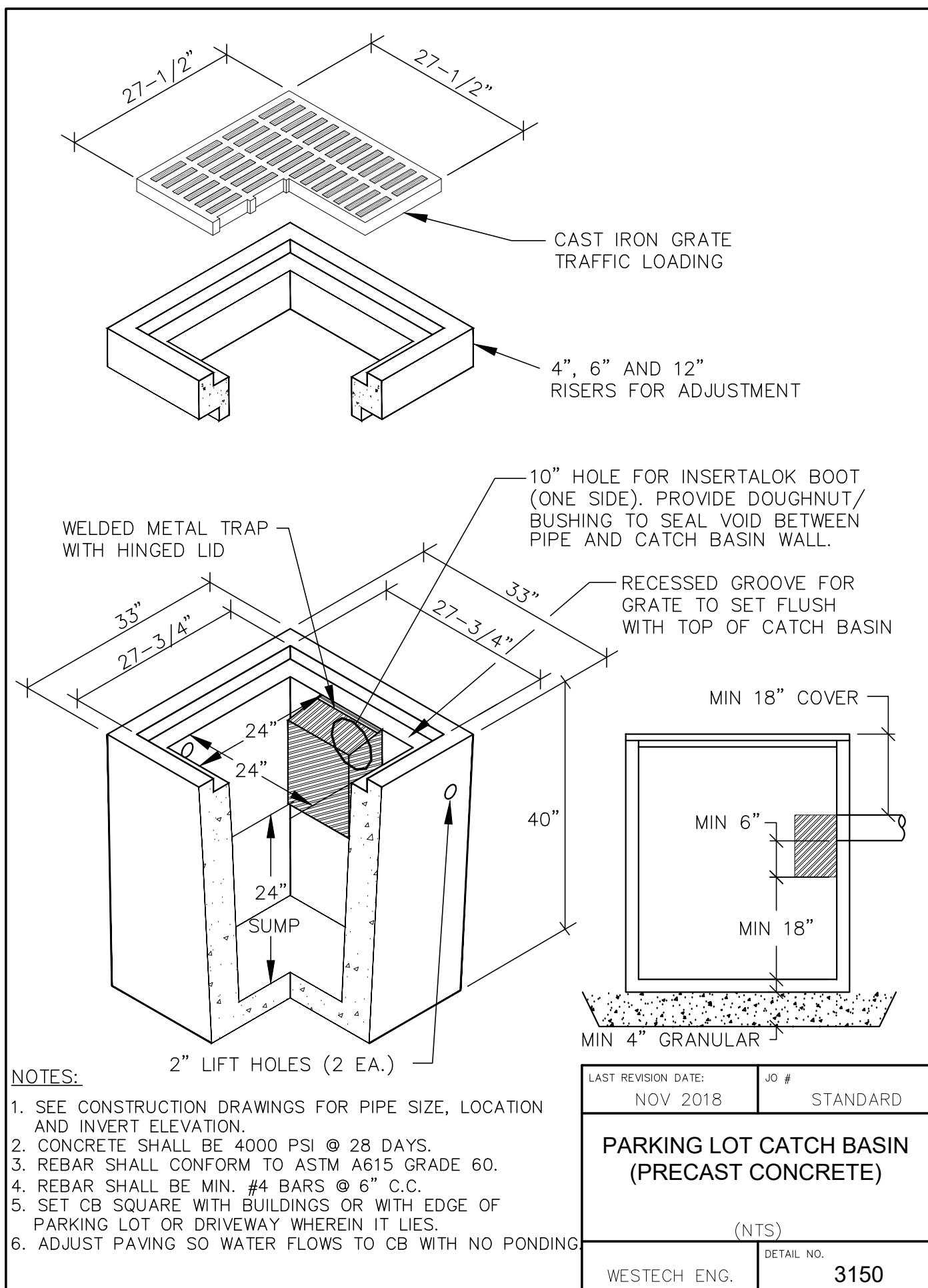
NOTES:	
1. CONCRETE DEPTH FOR STANDARD SIDEWALKS SHALL BE 4" MIN.	
2. CONCRETE SHALL BE 3300 PSI @ 28 DAYS.	
3. INSTALL TOOLED CONTRACTION JOINTS AT 5' INTERVALS. SIDEWALKS 10' & WIDER SHALL HAVE A LONGITUDINAL CONTRACTION JOINT AT 5' ON CENTER.	
4. INSTALL MIN. 2 WEEP HOLES ON ALL LOTS. ONE WEEP HOLE TO BE AT LOW POINT OF LOT, 5' FROM P/L. A CONTRACTION JOINT SHALL BE PLACED ALONG AND OVER WEEPHOLE & DRAIN PIPE.	
5. PUBLIC SIDEWALKS SHALL BE LOCATED ENTIRELY WITHIN RIGHT-OF-WAYS OR SIDEWALK EASEMENTS, INCLUDING SIDEWALKS AT DRIVEWAY APRONS.	
LAST REVISION DATE:	JO #
NOV 2013	STANDARD
MONOLITHIC CURB AND SIDEWALK	
(NTS)	
WESTECH ENG.	DETAIL NO. 2112



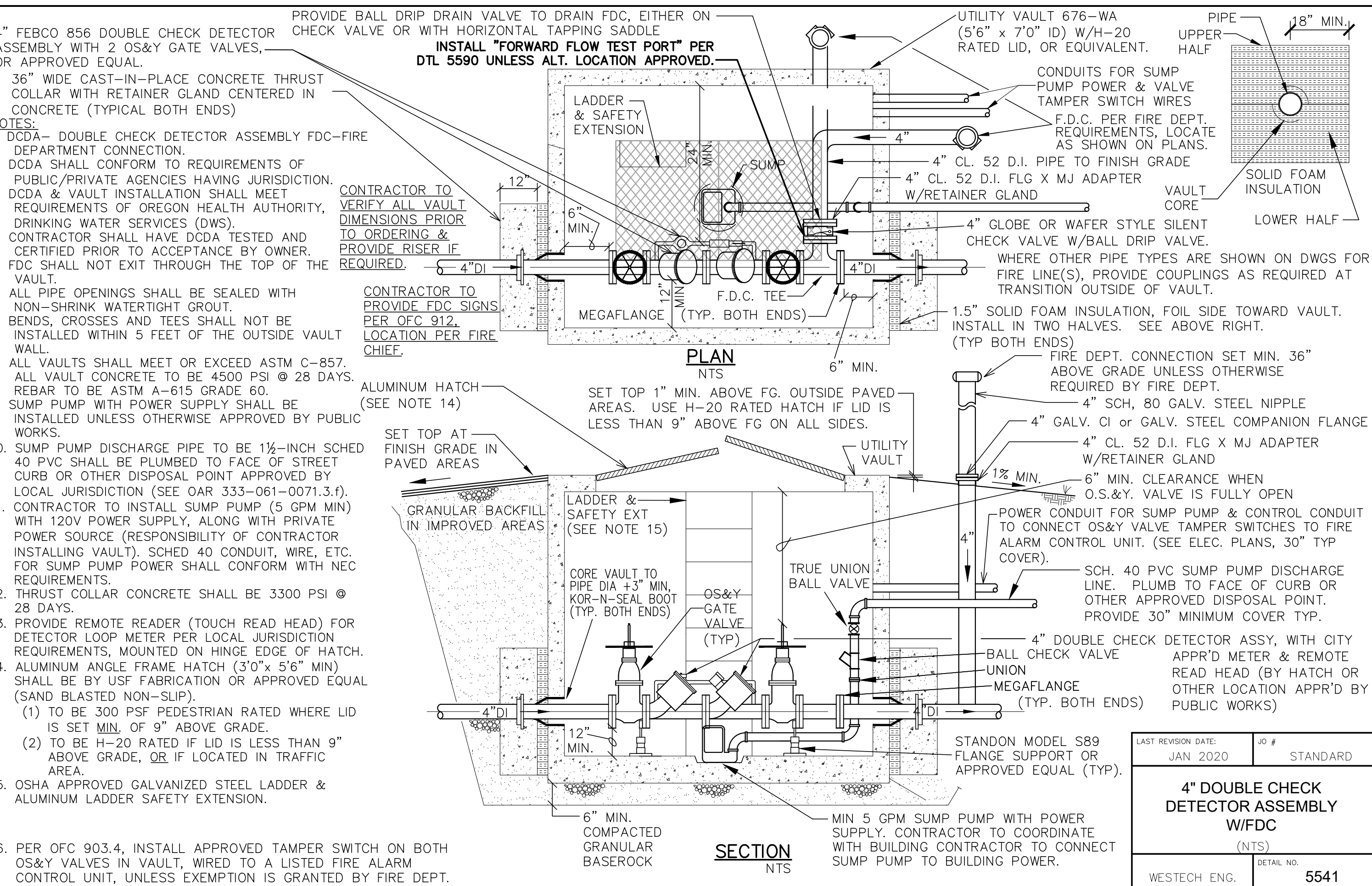
NOTES:	
1. SEE GRADING PLAN FOR LOCATION OF LIGHT AND HEAVY DUTY PAVEMENT.	
2. DESIGN SUBGRADES SHALL BE COMPACTED AND PROOF-ROLLED PRIOR TO PLACEMENT OF BASEROCK. IF SUBGRADE PASSES PROOF-ROLL BUT FAILS DENSITY TESTING, MIN. 4.5 OZ NON-WOVEN GEOTEXTILE FABRIC SHALL BE PLACED ON SUBGRADE PRIOR TO PLACEMENT OF BASEROCK. FAILURE OF PROOF-ROLL WILL REQUIRE OVEREXCAVATION.	
3. IF SUBGRADE FAILS THE PROOF-ROLL, SUBGRADE SHALL BE OVEREXCAVATED TO UNDISTURBED SOIL AND BACKFILLED WITH BASEROCK OVER MIN. 8.0-OZ. NON-WOVEN FABRIC AS REQUIRED TO ALLOW COMPACTION OF UPPER (DESIGN) BASEROCK SECTION AND TO MAINTAIN STRUCTURAL INTEGRITY OF NATIVE SUBGRADE SOILS. TYPICAL MINIMUM OVEREXCAVATION REQUIRED IS 12-INCHES. NO RUBBER Tired EQUIPMENT ALLOWED ON SUBGRADE FOLLOWING OVEREXCAVATION.	
4. BASEROCK TO BE PROOFROLLED IMMEDIATELY PRIOR TO PAVING.	
LAST REVISION DATE:	JO #
JAN 2000	X
PAVEMENT SECTION	
(NTS)	
WESTECH ENG.	DETAIL NO. 2391



LAST REVISION DATE:	JO #
FEB 2020	STANDARD
TRENCH BACKFILL, BEDDING, AND PIPE ZONE	
(NTS)	
WESTECH ENG.	DETAIL NO. 3010



NOTES:	
1. SEE CONSTRUCTION DRAWINGS FOR PIPE SIZE, LOCATION AND INVERT ELEVATION.	
2. CONCRETE SHALL BE 4000 PSI @ 28 DAYS.	
3. REBAR SHALL CONFORM TO ASTM A615 GRADE 60.	
4. REBAR SHALL BE MIN. #4 BARS @ 6" C.C.	
5. SET CB SQUARE WITH BUILDINGS OR WITH EDGE OF PARKING LOT OR DRIVEWAY WHEREIN IT LIES.	
6. ADJUST PAVING SO WATER FLOWS TO CB WITH NO PONDING	
LAST REVISION DATE:	JO #
NOV 2018	STANDARD
PARKING LOT CATCH BASIN (PRECAST CONCRETE)	
(NTS)	
WESTECH ENG.	DETAIL NO. 3150



LAST REVISION DATE:	JO #
JAN 2020	STANDARD
4\"/>	
(NTS)	
WESTECH ENG.	DETAIL NO. 5541

VERIFIED SCALE	1\"/>	DATE: 11/2022
DSN.	JW	NO.
DRN.	JH	1
CKD.	JW	
DESCRIPTION		REVISIONS
		BY

REGISTERED PROFESSIONAL ENGINEER
WILLIAM J. WELLS
JULY 12, 2008
WESTECH ENGINEERING, INC.
CONSULTING ENGINEERS AND PLANNERS
REVIEW

WESTECH ENGINEERING, INC.
CONSULTING ENGINEERS AND PLANNERS
3841 Fairview Industrial Dr. S.E., Suite 100, Salem, OR 97302
Phone: (503) 585-2474 Fax: (503) 585-3986
E-mail: westech@westech-eng.com

CB|TWO ARCHITECTS
1035 COMMERCIAL ST - MIXED USE
DRAWING
C6.0
JOB NUMBER
3429.0000