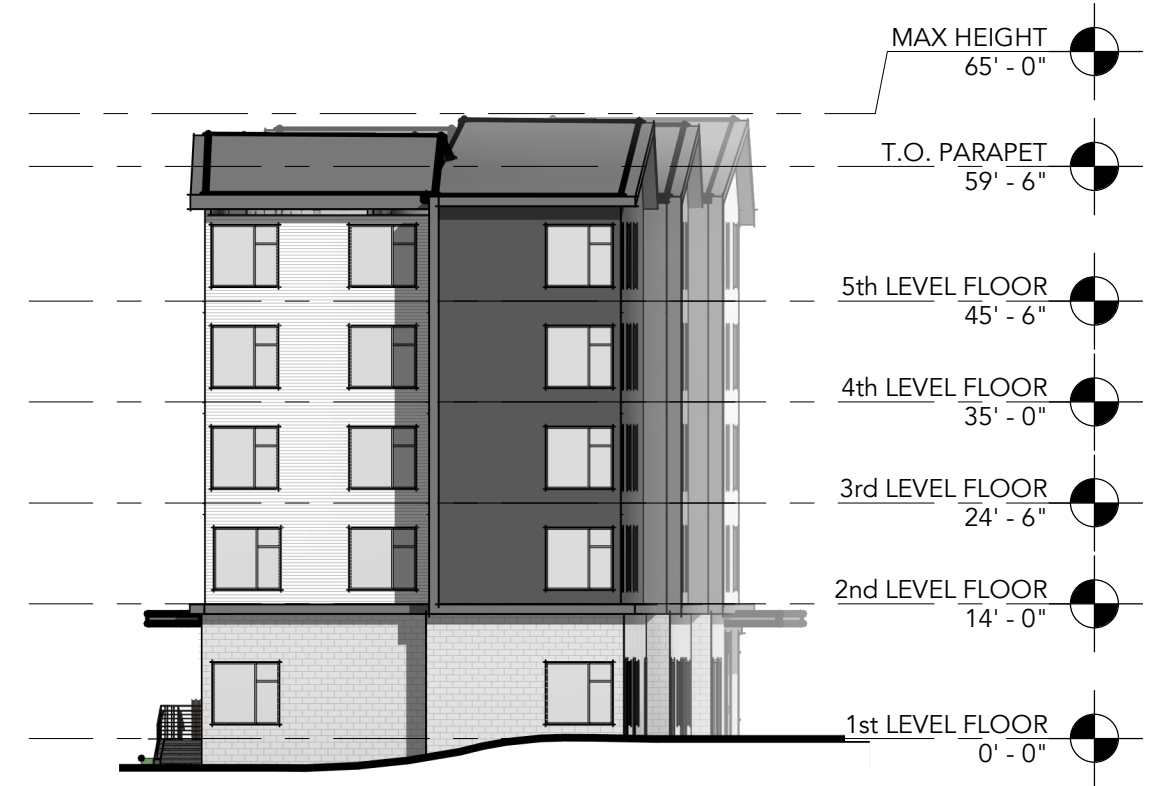
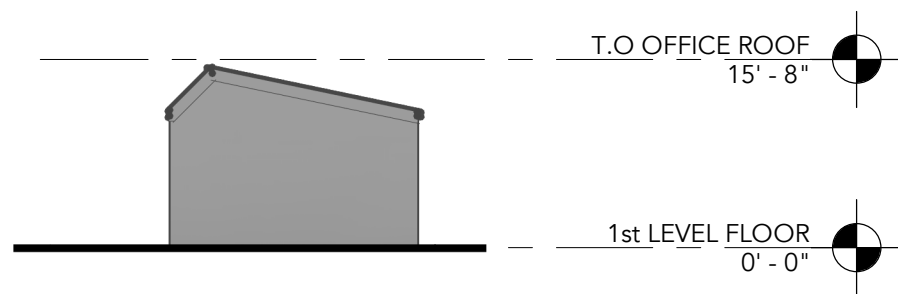




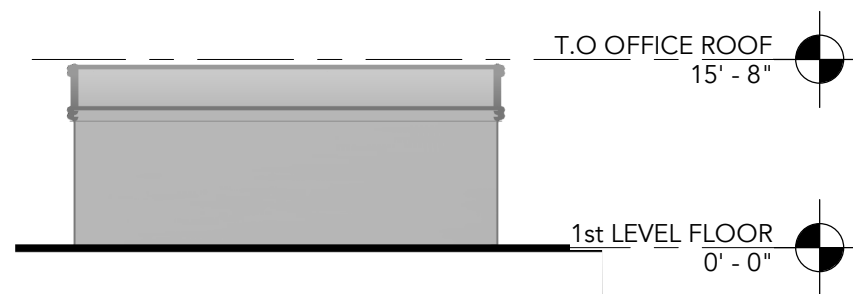
1 SOUTH ELEVATION  
SCALE: 1" = 20'-0"



2 WEST ELEVATION  
SCALE: 1" = 20'-0"



3 OFFICE - SOUTH ELEVATION  
SCALE: 1/16" = 1'-0"



4 OFFICE - WEST ELEVATION  
SCALE: 1/16" = 1'-0"