



DATE: December 5, 2022
TO: Ron Ped (rjp@rktect.com)
FROM: Robert Cornett, ISA Certified Arborist PN-6032A
RE: Tree protection measures

Location

970 13th St SE, Salem 97302

Date of Onsite Visit

I met with you on November 25, 2022 at 970 13th St SE. Your company is proposing new construction at the vacant lot directly east of this address (*figure 1*) and requested advice regarding tree protection for one of the two existing trees on the property.

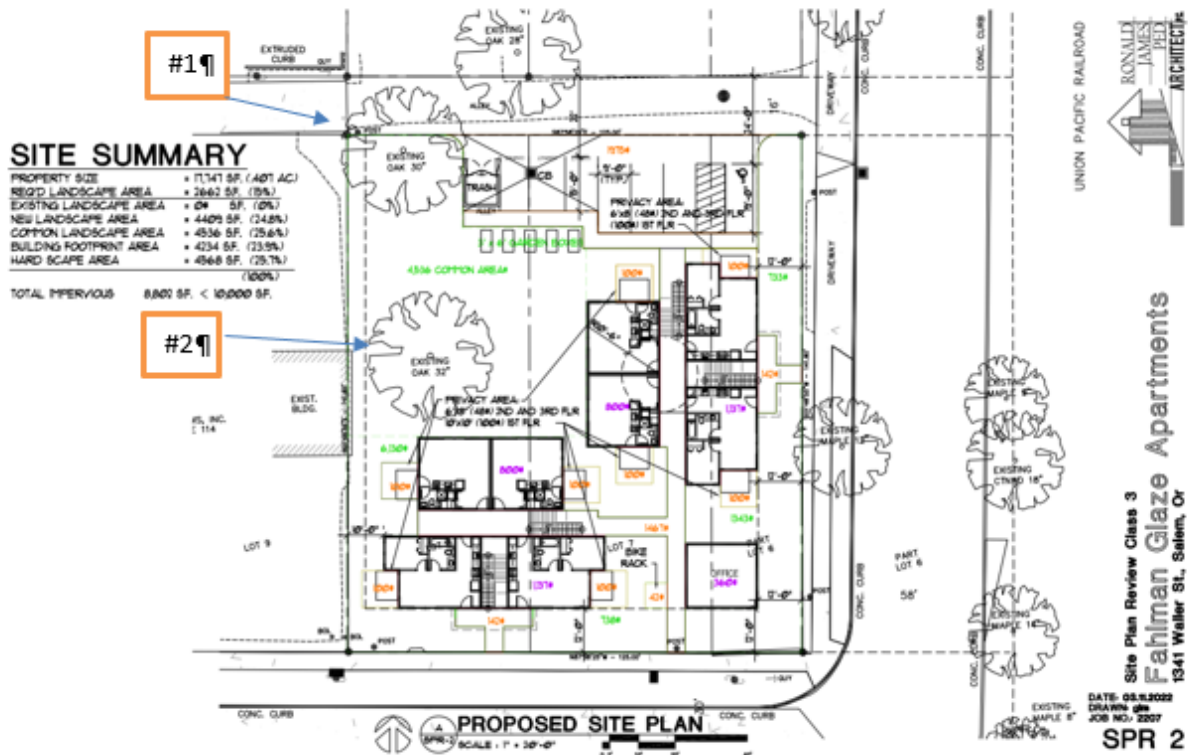
There are two oak trees on the property, however in my opinion, one of the trees should be removed due to the poor condition of the tree as it presents both a hazard and danger to persons and/or property. These hazards cannot be alleviated by treatment or pruning.

The first tree is a 30" diameter Oregon white oak and located at the NW corner of the property near the alley. The tree is declining and I recommend removal. Please refer to our estimate number 79496 for information on how to proceed with the tree removal application to the city.

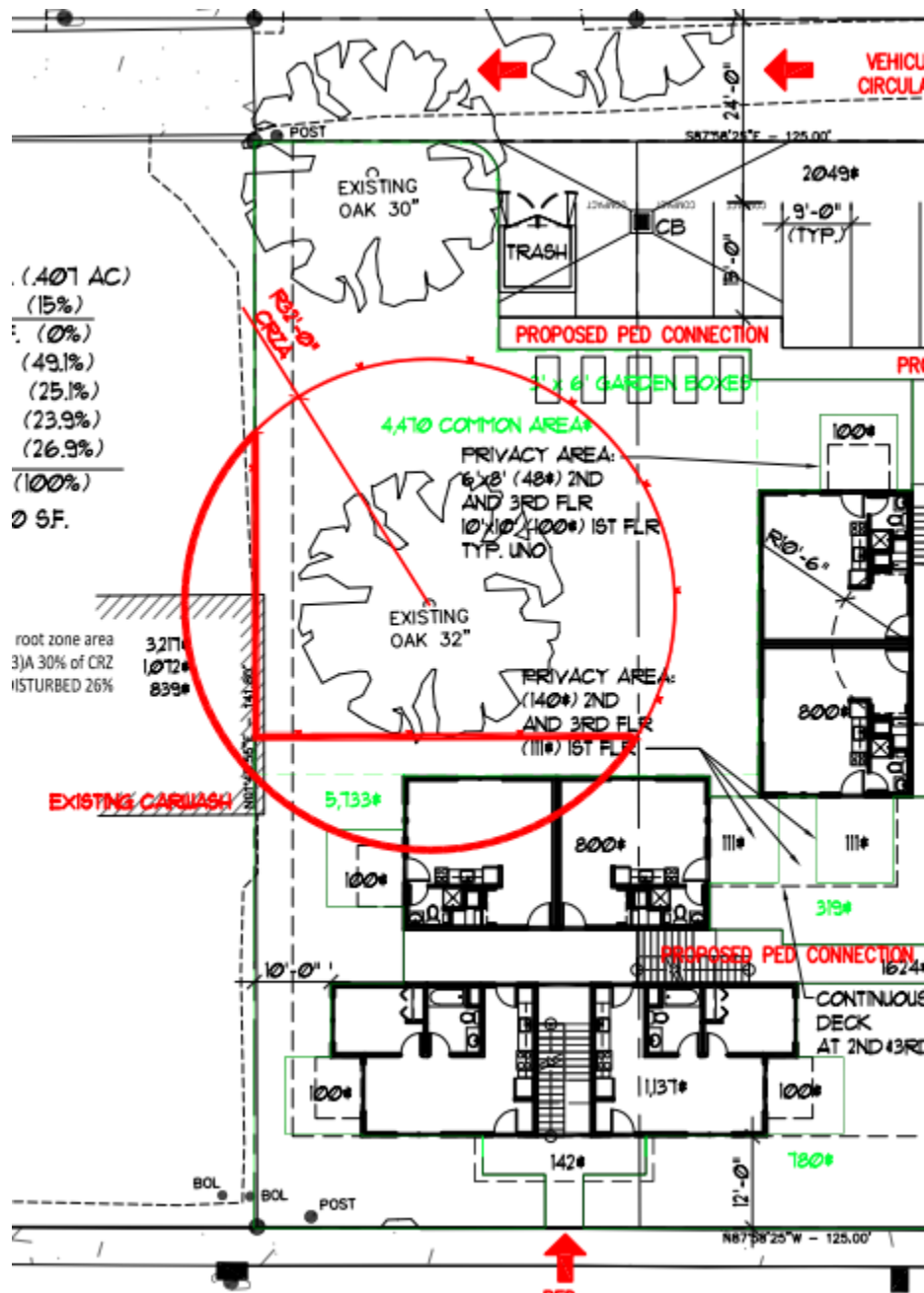
The second tree is a 32" diameter Oregon white oak and located directly to the east and behind the existing Pacific Pride building. This tree will be located within the footprint of the new proposed construction zone and you asked for advice to protect the tree and roots in the best interest of the tree.

Both of these trees can be identified on the site plan you provided, which is included in this memo.

Following please find a marked-up map (*figure 2*) and list of protection measures we recommend you take throughout the construction process to ensure the second oak tree (32" diameter) will be preserved and protected.



R & R Tree Service, Inc 1710 Commercial St NE, Salem, OR 97301 (p) 503.540.9038 (f) 503.540.9039 www.rrtreeservice.com





Recommendations

- Establish tree protection zones (TPZs) around protected tree(s) by installing sturdy fencing with 8' posts at a minimum distance of the tree's drip line.
- Clearly identify the perimeter of the TPZs with highly visible signs.
- Confine construction offices, vehicular parking, worker break sites, and material storage to locations outside of the TPZs.
- Avoid cutting tree roots over 4 inches in diameter.
- Make all necessary cuts to tree roots cleanly with sharp tools; never tear with a backhoe.
- Do not change soil grade within the TPZ by cutting or filling.
- Take care to not wound or break tree trunks or branches through contact with vehicles and heavy equipment.
- SPECIFIC to oak tree 32" circled in Figure 2. The west side of the tree has been in close proximity to the existing building and concrete, and appears to have adapted. The south side of the tree will be somewhat impacted in the construction zone however we are confident protection fencing around the tree, at approximately 74% coverage of the critical root zone, will not adversely affect or damage the health of the tree.

