

DRAWINGS FOR:

# REID SAUNDERS - NEW OFFICE

## STRONG RD SE & LINDBURG RD SE

## SALEM, OR 97302

FOR:

# REID SAUNDERS

## 1790 16TH ST SE #201

## SALEM, OR 97302

## (503) 581-7394

PROJECT LOCATION  
TAX LOT 083W11AB 02900,  
SECTION 11, T8S., R3W., W.M.



Know what's below.  
Call before you dig.

#### ABBREVIATIONS

ASPH	ASPHALT	IRR	IRRIGATION
AD	AREA DRAIN	INV	INVERT
ASSY	ASSEMBLY	JB	JUNCTION BOX
BLDG, BLD	BUILDING	LP	LIGHT POLE
BW	BOTTOM OF WALL	M	METER, MAIN
CATV	CABLE TELEVISION	MB	MAILBOX
CB	CATCH BASIN	MH	MANHOLE
CO	CLEAN-OUT	OH	OVER-HEAD
CONC	CONCRETE	P/L, R	PROPERTY LINE
CL, C	CENTERLINE	PP	POWER POLE
DIP	DUCTILE IRON PIPE	PVC	POLYVINYL CHLORIDE
EG	EDGE OF GRAVEL	PWR	POWER
EO, EP	EDGE OF PAVEMENT	R, RAD	RADIUS
ELEV	ELEVATION	RPB	RAISED PLANTER BOX
EX, EXIST	EXISTING	ROW, R/W	RIGHT-OF-WAY
FDC	FIRE DEPT. CONNECTOR	SS	SANITARY SEWER
FT	FEET	SD	STORM DRAIN
FF	FINISH FLOOR	SVC	SERVICE
FG	FINISH GRADE	SWK, S/W	SIDEWALK
FH	FIRE HYDRANT	TC	TOP OF CURB
FI	FIELD INLET	TEL	TELEPHONE
FM	FORCE MAIN	TR	TRANSFORMER
GRAV	GRAVEL	TS	TRAFFIC SIGNAL
GM	GAS METER	TW	TOP OF WALL
GP	GATE POST	TYP	TYPICAL
GS	GROUND SHOT	UG, U/G	UNDER GROUND
GV	GAS VALVE	UTL	UTILITY
HC	HANDICAP	VLT	VAULT
HYD	HYDRANT	W/	WITH
IR	IRON ROD	WM	WATER METER
IP	IRON PIPE	WLM	WETLANDS MARKER
		YPC	YELLOW PLASTIC CAP

#### LINE TYPES

CATV LINE	CATV	CATV	CATV	CATV	CATV	CATV	CATV	CATV	CATV
COMMUNICATION LINE	CDM	CDM	CDM	CDM	CDM	CDM	CDM	CDM	CDM
EASEMENT LINE									
FENCE LINE									
FIBER OPTIC LINE	FDC	FDC	FDC	FDC	FDC	FDC	FDC	FDC	FDC
GAS LINE	GAS	GAS	GAS	GAS	GAS	GAS	GAS	GAS	GAS
EDGE OF GRAVEL LINE	DH LINES	DH LINES	DH LINES	DH LINES	DH LINES	DH LINES	DH LINES	DH LINES	DH LINES
OVERHEAD LINE	PH	PH	PH	PH	PH	PH	PH	PH	PH
PHONE LINE	ELEC	ELEC	ELEC	ELEC	ELEC	ELEC	ELEC	ELEC	ELEC
POWER LINE									
SANITARY SEWER LINE	SS	SS	SS	SS	SS	SS	SS	SS	SS
STORM DRAIN LINE	SD	SD	SD	SD	SD	SD	SD	SD	SD
WATER LINE	V	V	V	V	V	V	V	V	V

#### SYMBOLS

AD	AREA DRAIN	SP	SIGN POST
CD or CDM	CATCH BASIN	PEO	PEDESTAL
COO	CLEANOUT	MB	MAIL BOX
FH	FIRE HYDRANT	IV	IRRIGATION VALVE
GV	GAS VALVE	LP	LIGHT POLE
WV	WATER VALVE	UP	UTILITY/POWER POLES
GPW	GAS/POWER/WATER METER	TP	TEST PIT
DSO	DOWN SPOUT	MF	MONUMENT FOUND
MT	MANHOLE TELEPHONE		
MSD	MANHOLE STORM DRAIN		
MS	MANHOLE SANITARY SEWER		
TR	TREES - *TREE NAME* DIAMETER (INCHES)/DRIP RADIUS (FEET)		
	NOTE: DIAMETER MEASURED AT BREAST HEIGHT		

ITEM	PROPOSED	EXISTING
SANITARY SEWER	SS	SS
STORM DRAIN	SD	SD
WATER	W	W
GAS	G	G
TELEPHONE	T	T
POWER	P	P
TELEVISION	TV	TV
FENCE	X	X
RAILROAD		
CURB, DRIVEWAY, P.C.C. SIDEWALK		
HEDGE OR BRUSH		
TREES		
STREET OR ALLEY RIGHT OF WAY	R/W	
PLATTED LOT LINE		
PLATTED LOT LINE (ABANDONED)		
OWNERSHIP LINE		
EASEMENT OR TEMPORARY RIGHT OF WAY		
IMPROVEMENT DISTRICT BOUNDARY		
PROJECT CENTERLINE AND STATIONING	2 3 4 5+00	
CITY LIMITS LINE		

ITEM	PROPOSED	EXISTING
BARRICADE		
FLOW DIRECTION		
TELEPHONE MANHOLE		
TELEPHONE PEDESTAL		
SANITARY SEWER MANHOLE		
STORM DRAIN MANHOLE		
CATCH BASIN		
JUNCTION BOX		
FIRE HYDRANT AND VALVE		
WATER METER		
WATER VALVE		
POWER POLE		
POWER POLE W/ANCHOR		
POLE W/LUMINAIRE		
LIGHT POLE		
SIGN POST		
MAILBOX		
TRAFFIC SIGNAL		
X=WALK SIGNAL		

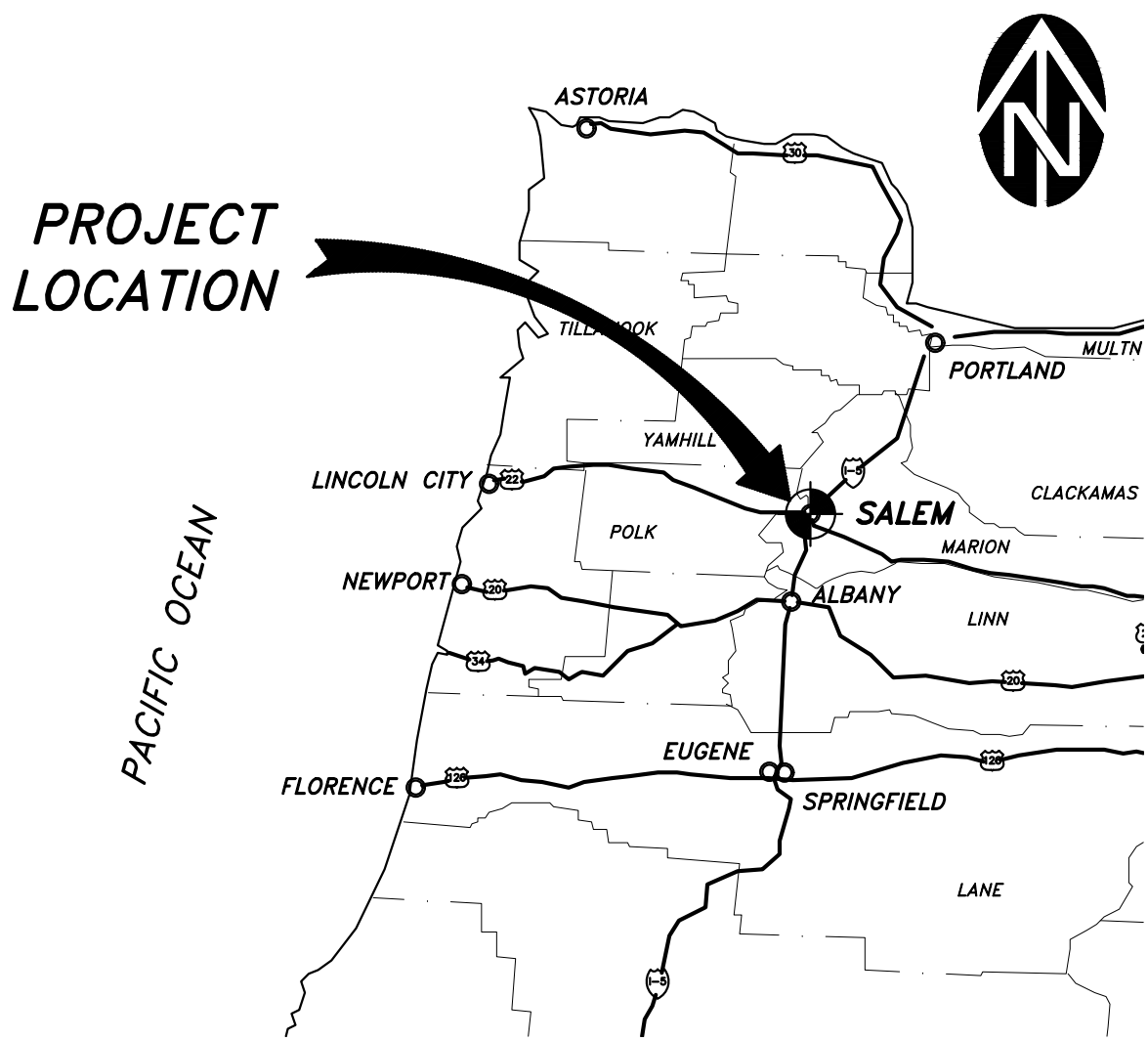
DISCLAIMER: UTILITIES DEPICTED ARE BASED ON EVIDENCE FOUND IN THE FIELD, MUNICIPALITY AND/OR OTHER GOVERNMENT ENTITY AS-BUILT PLANS, CONTRACTOR PLANS AND OTHER DOCUMENTS OF RECORD. BARKER SURVEYING ASSUMES NO RESPONSIBILITY FOR UTILITIES THAT ARE NO LONGER IN USE, INSTALLED AFTER THE DATE OF ACTUAL SURVEY, NOT IDENTIFIED OR NOT LOCATED. THIS INCLUDES UTILITIES UPON PUBLIC OR PRIVATE PROPERTY.

SPECIFIC UTILITY POSITIONS INDICATED ON THE GROUND SURFACE PROVIDED BY LOCATION SERVICES MAY VARY DUE TO UNDERGROUND DETECTION CAPABILITIES.

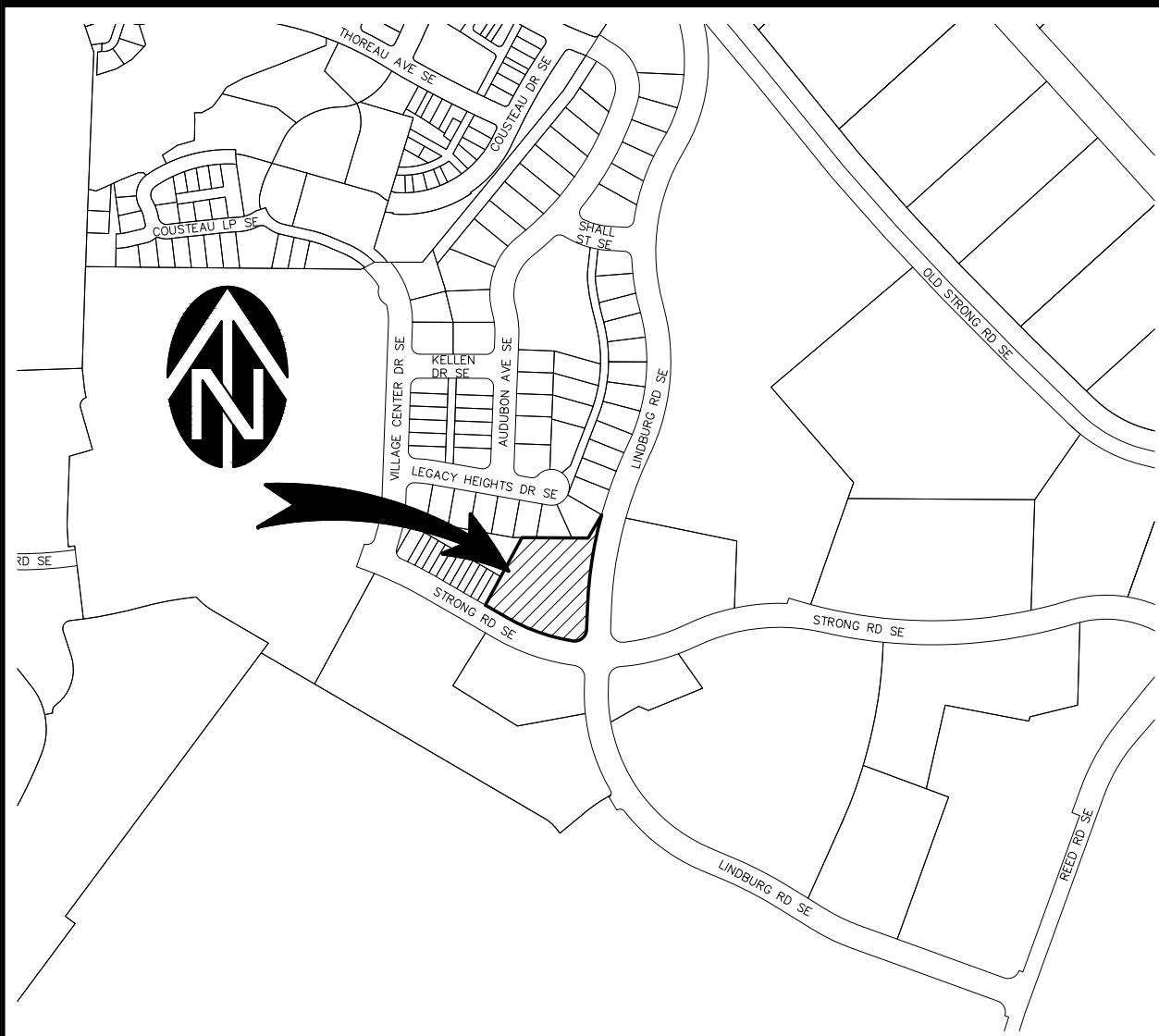
BENCHMARK UTILIZED:  
CITY OF SALEM #2098

ELEV: 369.46' NGVD 29

LOCATED EAST CURB BATTLE CR RD SE,  
220' N INTERSECTION BOONE RD SE, TO POF CURB @ B.R. OF TURN IN,  
10' SW UTILITY VAULT, 27' SW POWER POLE, 4' NW WM, 12' SE OF WV



VICINITY MAP



LOCATION MAP

#### SHEET INDEX

#### # TITLE

C0.0	COVER, INDEX, VICINITY & LOCATION MAPS
C0.1	CONSTRUCTION NOTES
C1.0	EROSION CONTROL PLAN - DEMOLITION & CLEARING
C1.1	EROSION CONTROL PLAN - STREETS & UTILITIES
C1.2	EROSION CONTROL PLAN - VERTICAL CONSTRUCTION
C1.3	EROSION CONTROL PLAN - FINAL LANDSCAPING & STABILIZATION
C1.4	EROSION CONTROL NOTES
C1.5	EROSION CONTROL NOTES
C1.6	EROSION CONTROL DETAILS
C2.0	GRADING & DRAINAGE PLAN
C2.1	SURFACING PLAN
C3.0	UTILITY PLAN
C5.0	CONSTRUCTION DETAILS
C5.1	CONSTRUCTION DETAILS

NO.	DATE	DESCRIPTION	BY
1	11/2022	DATE: 11/2022	





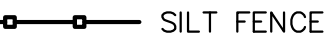



**WESTTECH ENGINEERING, INC.**  
CONSULTING ENGINEERS AND PLANNERS

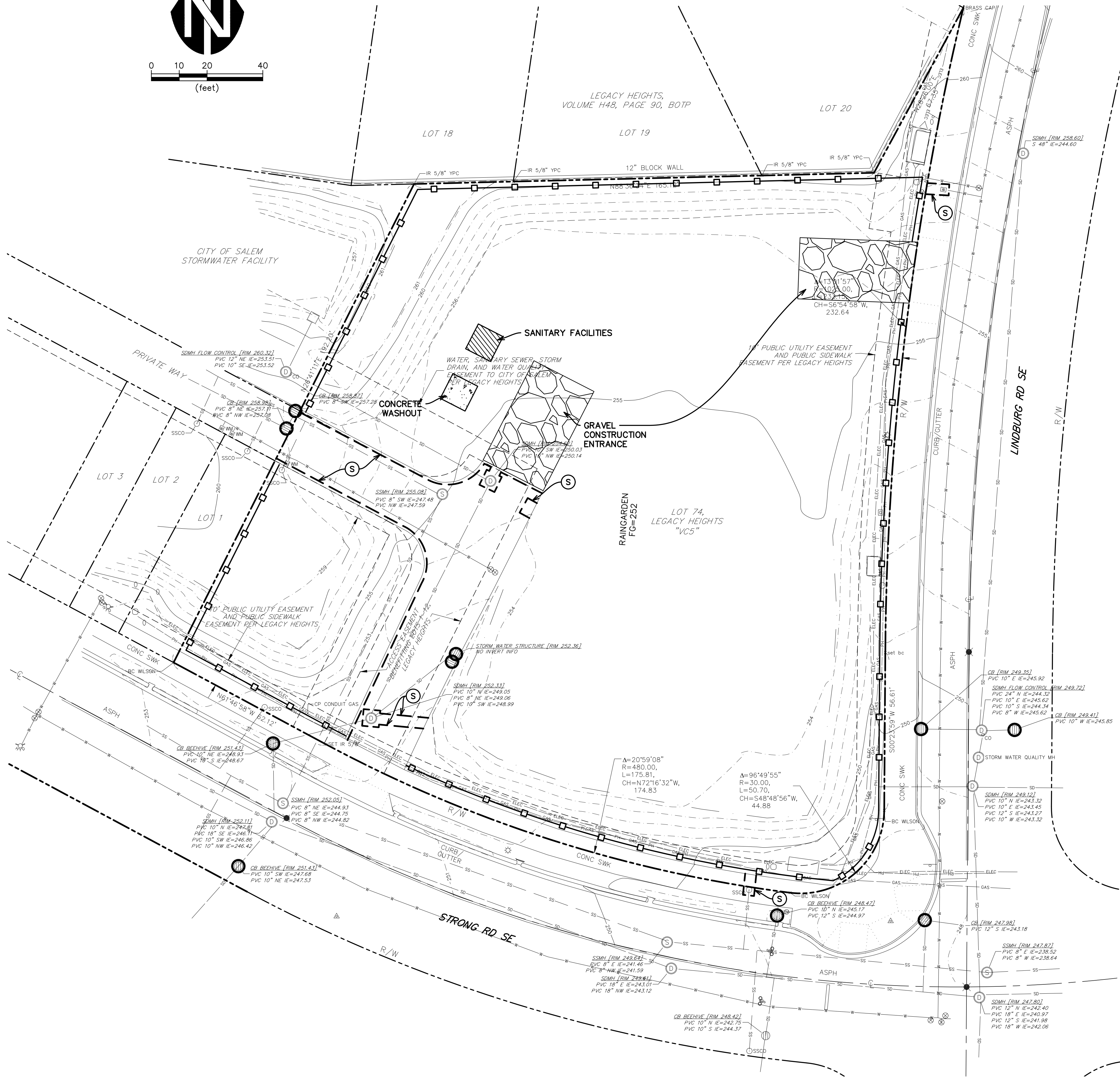
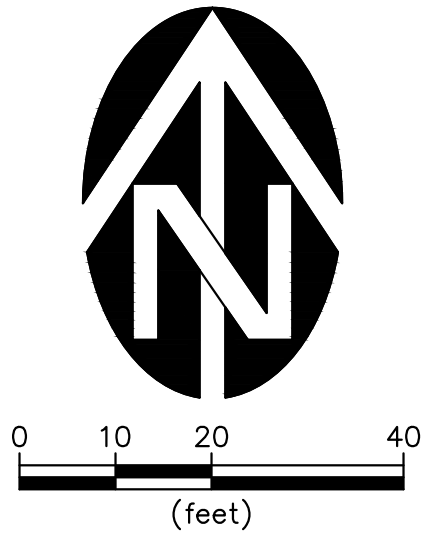
3841 Fairview Industrial Dr. S.E., Suite 100, Salem, OR 97302  
Phone: (503) 585-2474 Fax: (503) 585-3986  
E-mail: westtech@westtech-eng.com

**REID SAUNDERS**  
REID SAUNDERS - NEW OFFICE  
COVER, INDEX, VICINITY & LOCATION MAPS


DRAWING  
**C0.0**  
JOB NUMBER  
3391.0000.0



EROSION CONTROL LEGEND	
	SILT SACK
	BIO-BAG
	SILT FENCE
DEMOLITION LEGEND	
	REMOVE
	PROTECT
	SAWCUT



REID SAUNDERS  
REID SAUNDERS – NEW OFFICE

WESTTECH ENGINEERING, INC.  
CONSULTING ENGINEERS AND PLANNERS  
  
3841 Fairview Industrial Dr. S.E., Suite 100, Salem, OR 97302  
Phone: (503) 585-2474 Fax: (503) 585-3986  
E-mail: westtech@westtech-eng.com



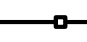
DRAWING  
C1.0

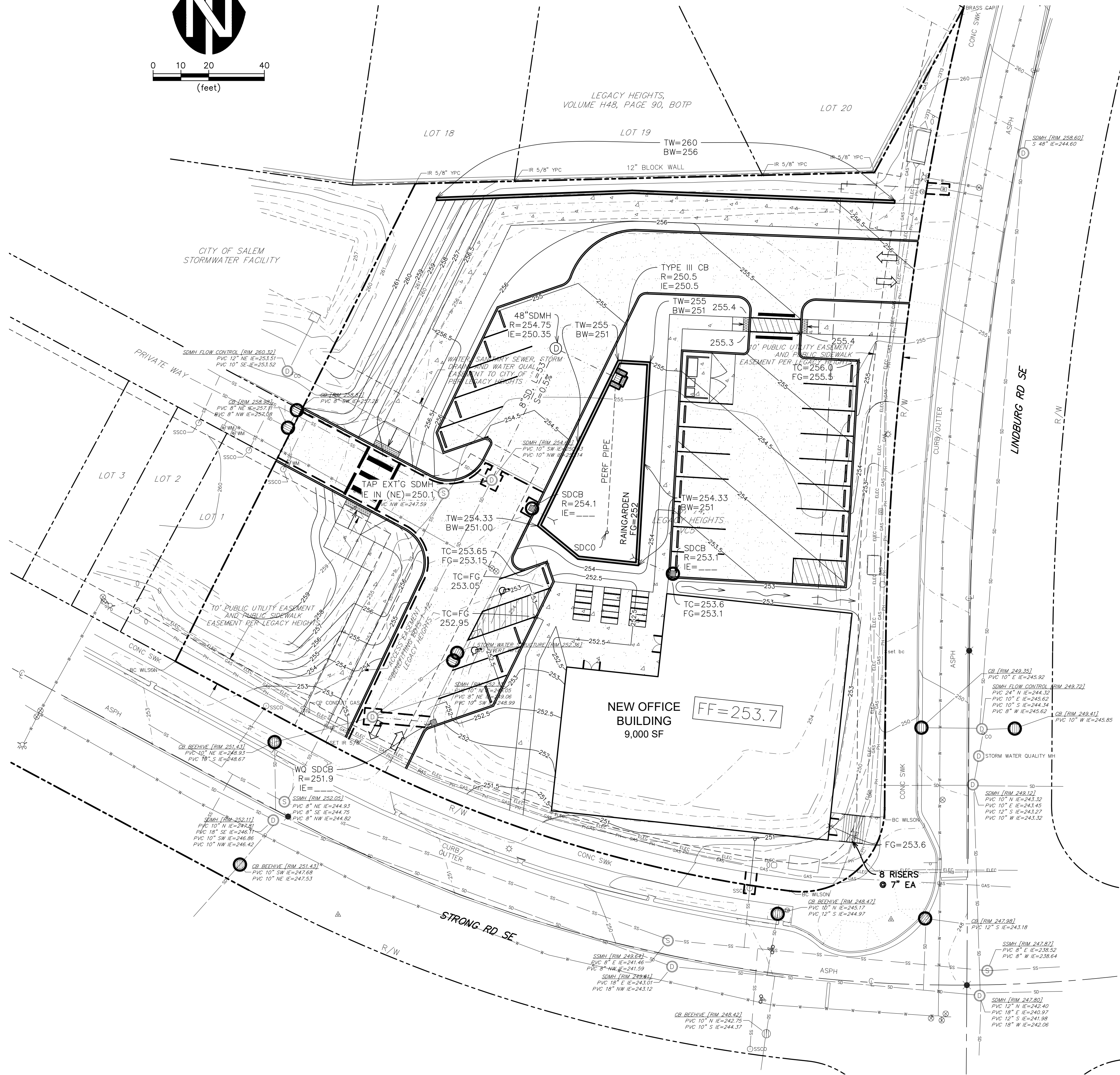
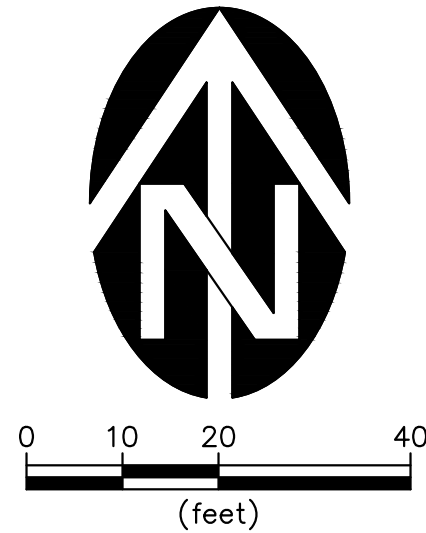
JOB NUMBER  
3391.0000.0

EROSION CONTROL PLAN –  
DEMOLITION & CLEARING

REVIEW  
PROFESSIONAL ENGINEER  
STEVEN A. JENKINS  
RENEW: 6/30/2024

VERIFY SCALE  
BAR IS ONE INCH ON  
ORIGINAL DRAWING  
IF NOT ONE INCH ON  
THIS DRAWING, SCALE  
APPROPRIATELY  
0 1"  
DSN. SW  
DRN. AK  
CKD. SW  
DATE: 11/2022  
NO. DATE DESCRIPTION REVISIONS

EROSION CONTROL LEGEND	
	SILT SACK
	BIO-BAG
	SILT FENCE



VERIFY SCALE	
0	1"
BAR IS ONE INCH ON ORIGINAL DRAWING	
IF NOT ONE INCH ON SCALES ACCURACLY	
DSN.	SW
DRN.	AK
CKD.	SW
NO.	DATE
REVISIONS	
DESCRIPTION	
BY	

REGISTERED PROFESSIONAL ENGINEER  
**REVIEW**  
STEVEN A. LEBLANC  
GIVEN 16 JULY 16  
RENEW: 6/30/2024

**WESTTECH ENGINEERING, INC.**  
CONSULTING ENGINEERS AND PLANNERS  
3841 Fairview Industrial Dr. S.E., Suite 100, Salem, OR 97302  
Phone: (503) 585-2474 Fax: (503) 585-3986  
E-mail: westtech@westtech-eng.com

REID SAUNDERS  
REID SAUNDERS - NEW OFFICE  
**EROSION CONTROL PLAN -  
STREETS & UTILITIES**

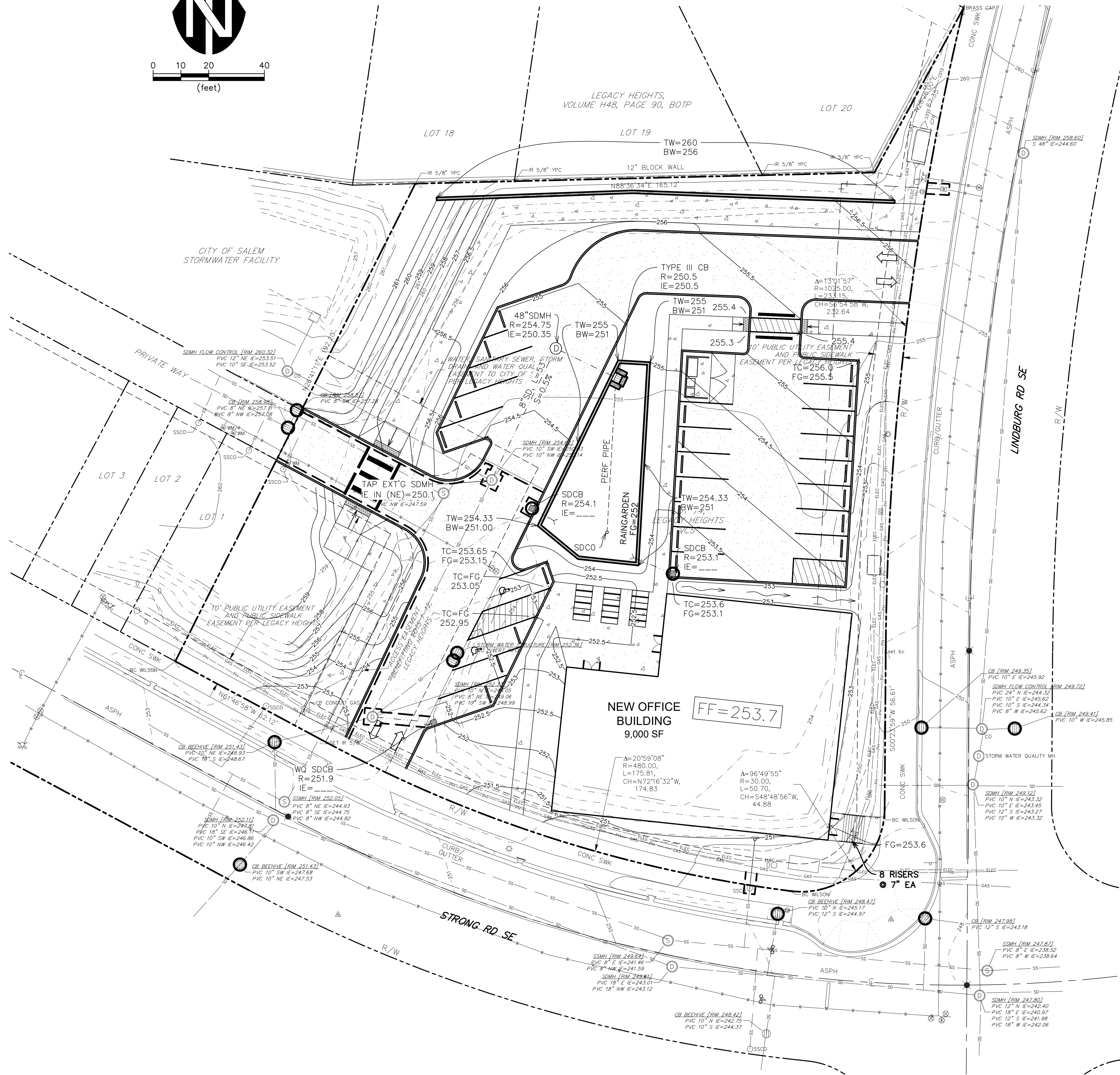
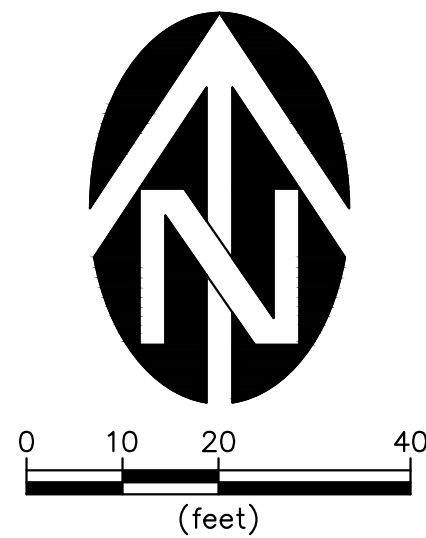
DRAWING  
**C1.1**  
JOB NUMBER  
**3391.0000.0**

EROSION CONTROL LEGEND

SILT SACK

BIO-BAG

SILT FENCE



REID SAUNDERS

REID SAUNDERS – NEW OFFICE

DRAWING  
C1.2

JOB NUMBER  
3391.0000.0

WESTECH ENGINEERING, INC.  
CONSULTING ENGINEERS AND PLANNERS



3841 Fairview Industrial Dr. S.E., Suite 100, Salem, OR 97302  
Phone: (503) 585-2474 Fax: (503) 585-3986  
E-mail: westech@westech-eng.com

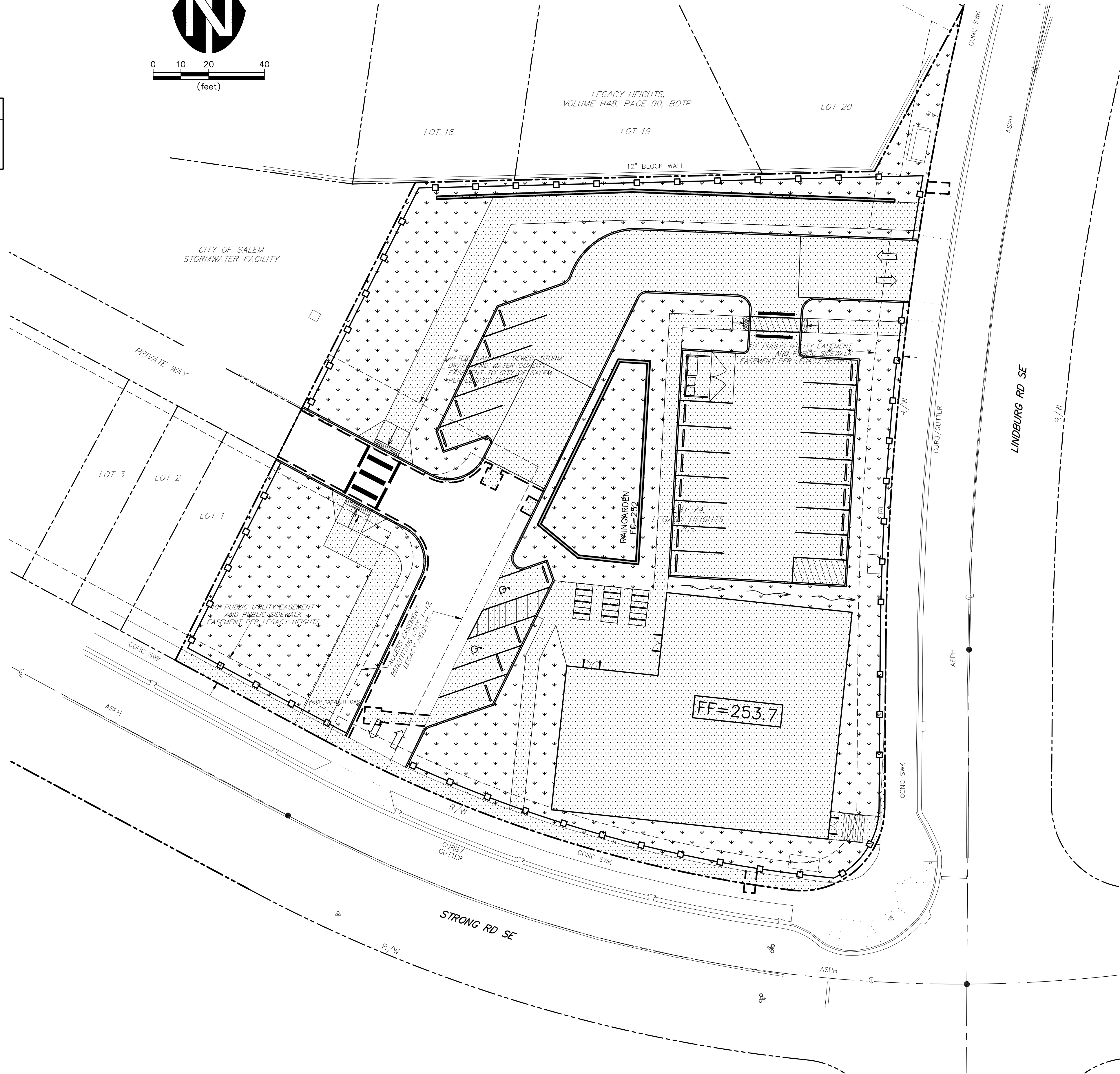
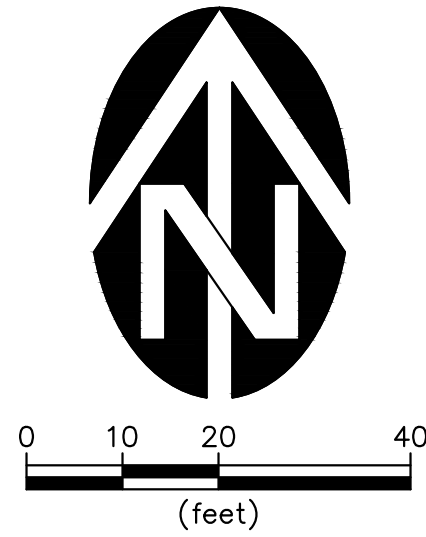
REVIEW  
STEVEN A. STEVENSON  
REGISTERED PROFESSIONAL ENGINEER  
GEORGE B. STEVENSON  
REGISTERED PROFESSIONAL ENGINEER

DATE: 11/2022

NO. DATE DESCRIPTION BY

REVISIONS

SURFACING LEGEND	
	NEW ASPHALT/CONCRETE
	IF NOT SHOWN TO BE LANDSCAPED, CONTRACTOR TO HYDROSEED



VERIFY SCALE	
BAR IS ONE INCH ON ORIGINAL DRAWING	1"
IF NOT ONE INCH ON SCALES, ACCURACY	
0	
DSN.	SW
DRN.	AK
CKD.	SW
NO.	DATE
DATE: 11/2022	
DESCRIPTION	
REVISIONS	
BY	

REGISTERED PROFESSIONAL ENGINEER  
REVIEW  
STEVEN A. GWIN  
RENEW: 6/30/2024

WESTTECH ENGINEERING, INC.  
CONSULTING ENGINEERS AND PLANNERS  
3841 Fairview Industrial Dr. S.E., Suite 100, Salem, OR 97302  
Phone: (503) 585-2474 Fax: (503) 585-3986  
E-mail: westtech@westtech-eng.com

REID SAUNDERS  
REID SAUNDERS - NEW OFFICE  
EROSION CONTROL PLAN -  
FINAL LANDSCAPING &  
STABILIZATION

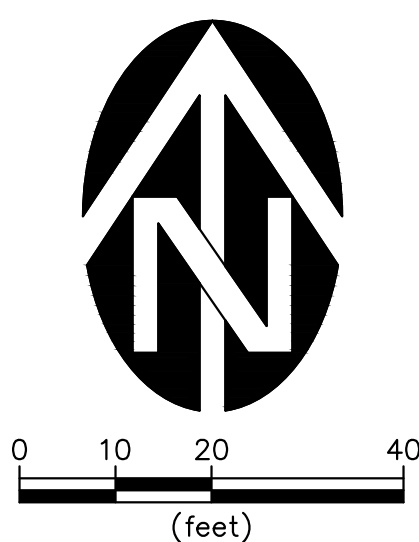
DRAWING  
C1.3

JOB NUMBER  
3391.0000.0

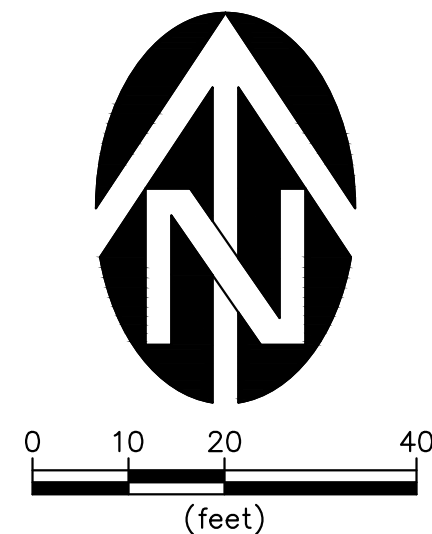




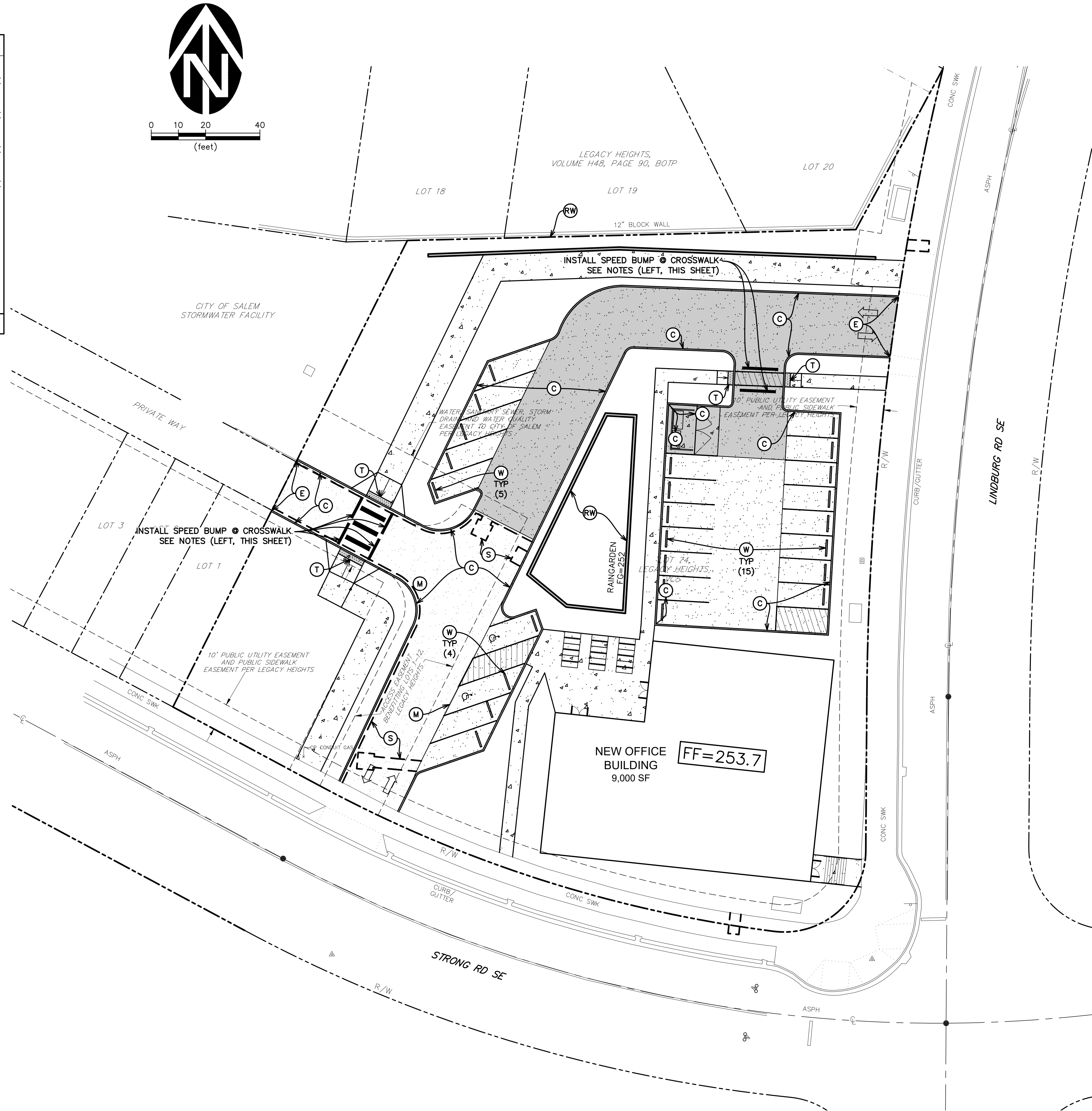




REID SAUNDERS REID SAUNDERS – NEW OFFICE	GRADING & DRAINAGE PLAN	DRAWING <b>C2.0</b>
JOB NUMBER		<u>3391.0000.0</u>



- NOTES:**
1. SPEED BUMPS SHALL BE HEAVY-DUTY COMMERCIAL SOLID RUBBER CONSTRUCTION FOR HIGH TRAFFIC AREAS OR HEAVY VEHICLES SUCH AS TRUCKS & BUSES.
  2. SPEED BUMPS SHALL BE ALTERNATING BLACK & YELLOW WITH HIGH VISIBILITY REFLECTIVE MATERIALS.
  3. SPEED BUMPS SHALL BE 12" WIDE & 2.0" (MIN) - 2.25" (MAX) HIGH WITH A TOTAL LENGTH OF 10" UNLESS OTHERWISE APPROVED.
  4. SPEED BUMPS SHALL BE INSTALLED WITH 12" MIN LENGTH GALVANIZED STEEL SPIKES OR APPROVED EQUAL.



REID SAUNDERS  
 REID SAUNDERS – NEW OFFICE

# SURFACING PLAN

DRAWING  
C2.1

JOB NUMBER  
3391.0000.0

**WE**

**WESTECH ENGINEERING, INC.**  
CONSULTING ENGINEERS AND PLANNERS

3841 Fairview Industrial Dr. S.E., Suite 100, Salem, OR 97302  
Phone: (503) 585-2474 Fax: (503) 585-3986  
E-mail: [westech@westech-eng.com](mailto:westech@westech-eng.com)

**REVIEW**

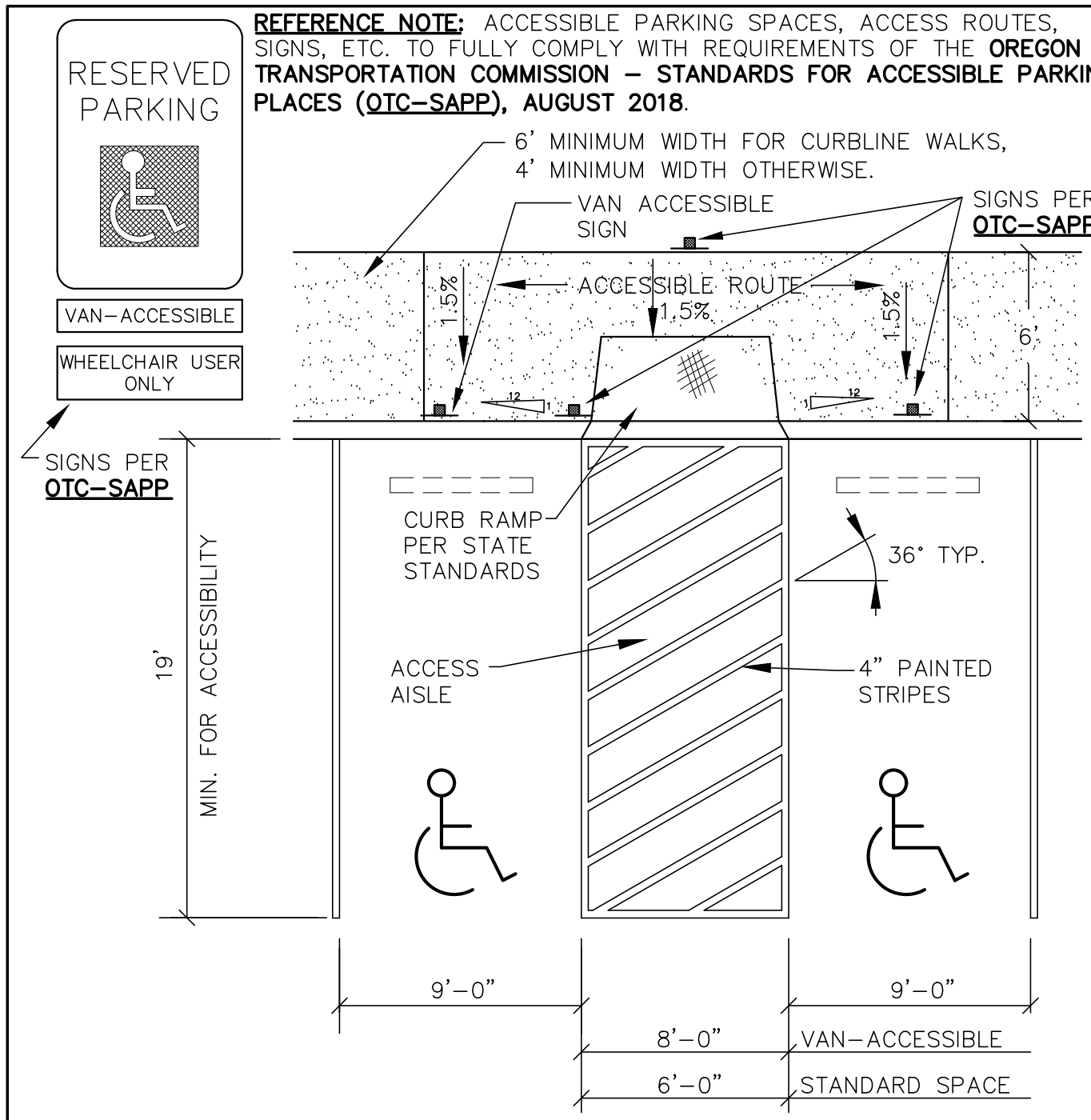
VERIFY SCALE							
BAR IS ONE INCH ON ORIGINAL DRAWING							
D	1"						
IF NOT ONE INCH ON SCALES ACCORDINGLY							
DSN.	SW						
DRN.	AK						
KD.	SW						
DATE: 11/20/22							
NO.	DATE						
DESCRIPTION							
REVISIONS							
BY							



REID SAUNDERS  
REID SAUNDERS – NEW OFFICE  
UTILITY PLAN

DRAWING  
C3.0

JOB NUMBER  
3391.0000.0

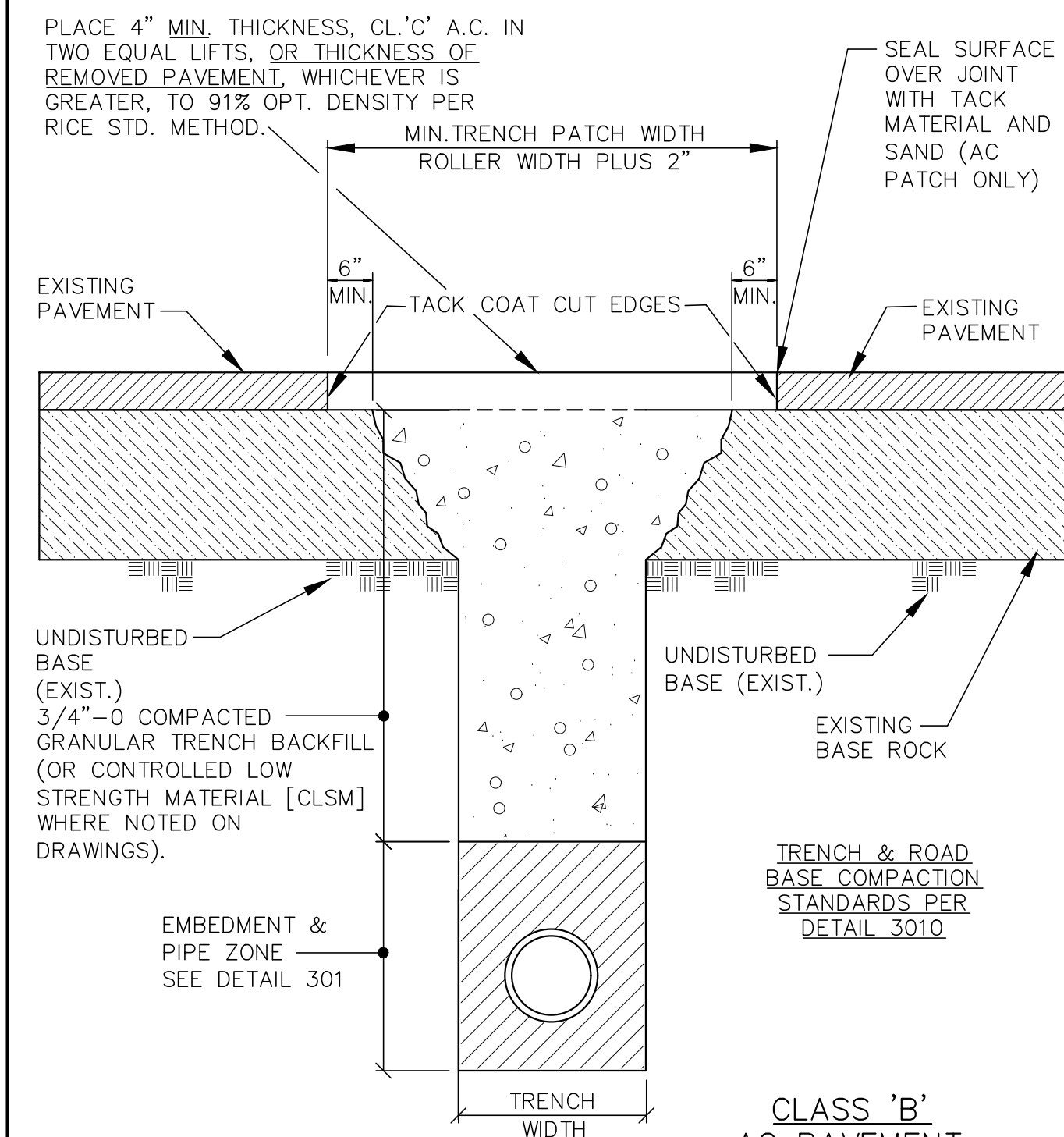


**DOUBLE ACCESSIBLE PARKING SPACE**

**NOTES:**

- ONE ACCESSIBLE PARKING SPACE MUST BE DESIGNATED "VAN-ACCESSIBLE", THE OTHER SPACE CAN BE EITHER "VAN-ACCESSIBLE" OR STANDARD PARKING SPACE.
- VAN-ACCESSIBLE OR WHEELCHAIR ONLY SPACES SHALL HAVE AN ADDITIONAL SIGN MOUNTED BELOW THE STANDARD PARKING SPACE PARKING SIGN.
- VAN-ACCESSIBLE SPACE CAN BE USED BY ANY VEHICLE WITH A DMV DISABLED PERMIT.
- MAXIMUM 2% CROSS SLOPE ALLOWED IN PARKING SPACE OR ACCESS AISLE.
- POST MOUNTED SIGNS SHALL HAVE 7' (±3") CLEARANCE FROM SIGN BOTTOM TO GROUND.

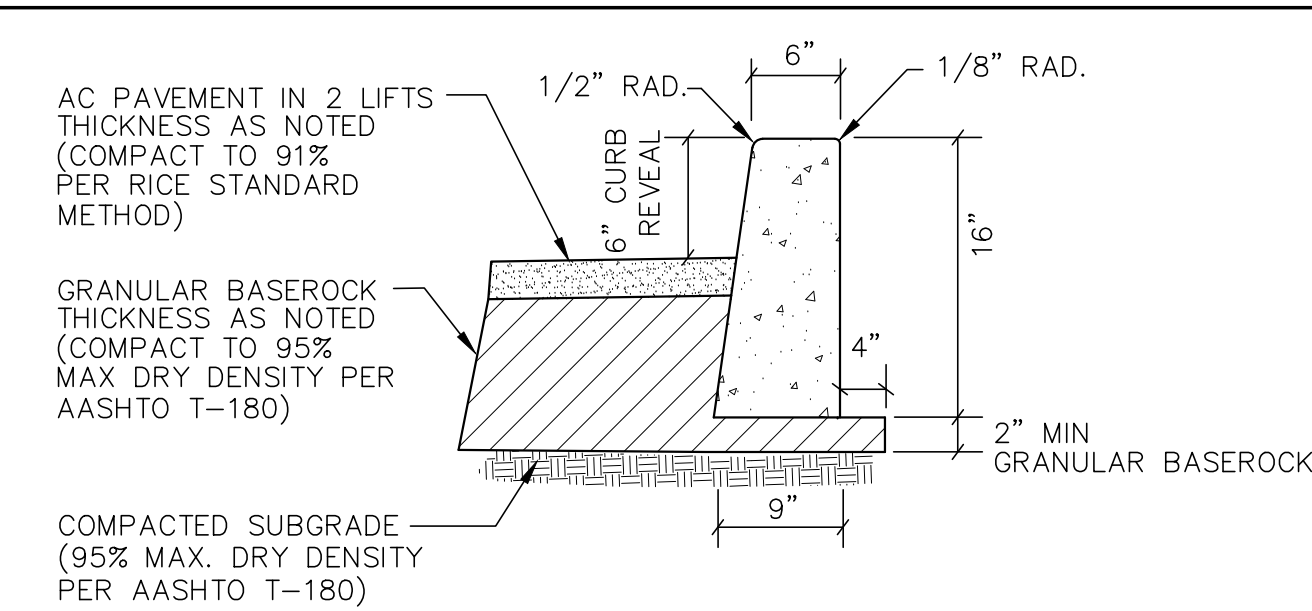
LAST REVISION DATE:	JO #
SEPT 2021	STANDARD
<b>DOUBLE ACCESSIBLE PARKING SPACE</b>	
(NTS)	
WESTECH ENG.	DETAIL NO. 2370



**NOTES:**

- ALL EXISTING AC OR PCC PAVEMENT SHALL BE SAWCUT PRIOR TO REPAVING.
- PCC CONCRETE PAVEMENT SHALL BE REPLACED WITH 3300 PSI PCC TO A MINIMUM THICKNESS OF 6" OR TO THE THICKNESS OF REMOVED CONCRETE, WHICHEVER IS GREATER.
- FOR PAVED DRIVEWAYS (EXCEPT COMMERCIAL OR INDUSTRIAL) WITH LESS THAN 4" EXISTING AC, PAVEMENT THICKNESS MAY BE REDUCED TO 3" AC IN 2 LIFTS, AND OVERCUT MAY BE REDUCED TO 3" EACH SIDE.

LAST REVISION DATE:	JO #
DEC 2015	STANDARD
<b>STREET CUT SURFACE RESTORATION</b>	
(NTS)	
WESTECH ENG.	DETAIL NO. 3020



**PAVEMENT & BASEROCK SECTIONS:**

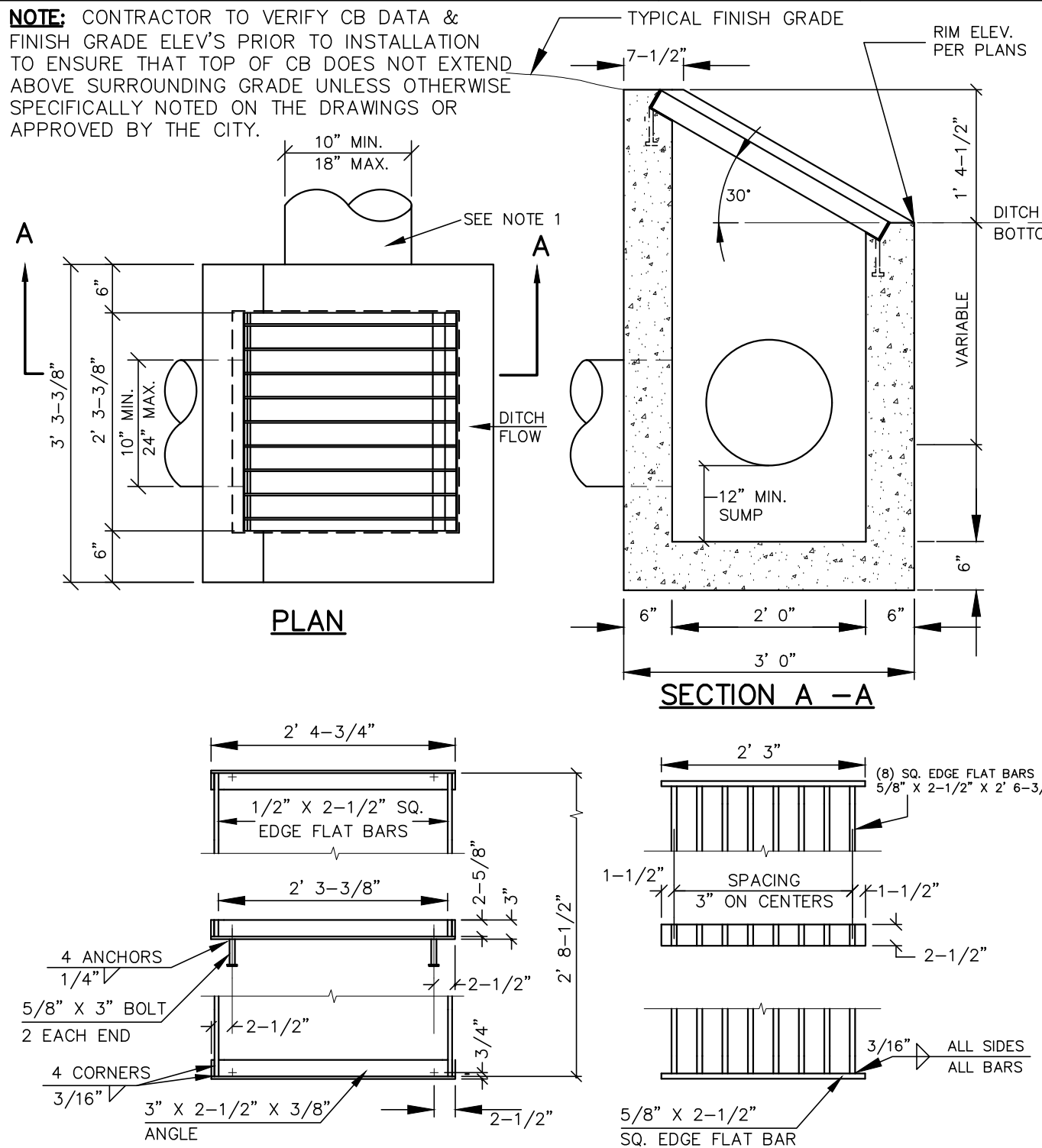
- LIGHT DUTY PAVEMENT**  
3" AC PAVEMENT IN 2 LIFTS (1" CLASS 'C' OVER 2" CLASS 'B')  
7" OF 1"-0 GRANULAR BASEROCK
- HEAVY DUTY PAVEMENT**  
3" AC PAVEMENT IN 2 LIFTS (1" CLASS 'C' OVER 2" CLASS 'B')  
12" OF 1"-0 GRANULAR BASEROCK

**PAVEMENT/TYPE "C" CURB DETAIL**  
NTS

**NOTES:**

- SEE GRADING PLAN FOR LOCATION OF LIGHT AND HEAVY DUTY PAVEMENT.
- DESIGN SUBGRADES SHALL BE COMPACTED AND PROOF-ROLLED PRIOR TO PLACEMENT OF BASEROCK. IF SUBGRADE PASSES PROOF-ROLL BUT FAILS DENSITY TESTING, MIN. 4.5 OZ NON-WOVEN GEOTEXTILE FABRIC SHALL BE PLACED ON SUBGRADE PRIOR TO PLACEMENT OF BASEROCK. FAILURE OF PROOF-ROLL WILL REQUIRE OVEREXCAVATION.
- IF SUBGRADE FAILS THE PROOF-ROLL, SUBGRADE SHALL BE OVEREXCAVATED TO UNDISTURBED SOIL AND BACKFILLED WITH BASEROCK OVER MIN. 8.0-OZ. NON-WOVEN FABRIC AS REQUIRED TO ALLOW COMPACTION OF UPPER (DESIGN) BASEROCK SECTION AND TO MAINTAIN STRUCTURAL INTEGRITY OF NATIVE SUBGRADE SOILS. TYPICAL MIN. OVEREXCAVATION REQUIRED IS 12-INCHES. NO RUBBER TIERED EQUIPMENT ALLOWED ON SUBGRADE FOLLOWING OVEREXCAVATION.
- SUBGRADE TO BE PROOFROLLED IMMEDIATELY PRIOR TO PLACING BASEROCK. BASEROCK TO BE PROOFROLLED IMMEDIATELY PRIOR TO PAVING.
- CONTRACTION JOINTS SHALL BE PLACED AT 15' MIN. INTERVALS AND SHALL EXTEND AT LEAST 50% THROUGH THE CURB SECTION.
- ALL CONCRETE SHALL BE 3300 PSI @ 28 DAYS, MAX 5" SLUMP, 4.5% AIR (±1.5%).
- CURBS TO CURE A MINIMUM OF 7 DAYS PRIOR TO PLACING FINAL BASEROCK AND PAVING. USE TYPE 1 OR 1-D CLEAR CURING COMPOUND.

LAST REVISION DATE:	JO #
AUG 2020	X
<b>PAVEMENT AND TYPE 'C' CURB DETAIL</b>	
(NTS)	
WESTECH ENG.	DETAIL NO. 2390

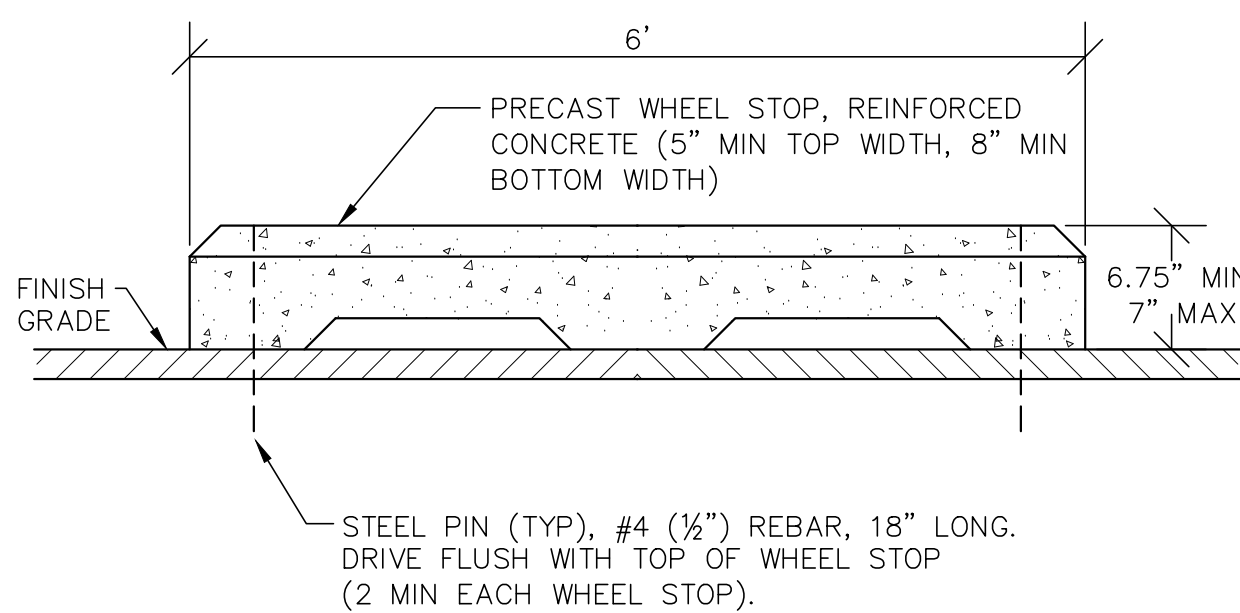


**NOTES:**

- SEE CONSTRUCTION DRAWINGS FOR PIPE SIZE, LOCATION AND INVERT ELEVATION.
- FRAME & GRATE SHALL BE ASTM A-36 STEEL, HOT-DIPPED GALV, AFTER CONSTRUCTION.
- ALL CONCRETE TO BE 4000 PSI MIN AT 28 DAYS.
- PRIOR TO CB INSTALLATION, CONTRACTOR SHALL VERIFY RIM ELEVATIONS LISTED AGAINST DITCH & FINISH GRADE ELEVATIONS, & NOTIFY CITY OF ANY DISCREPANCIES.

**FRAME & GRATE**

LAST REVISION DATE:	JO #
AUG 2020	STANDARD
<b>TYPE 3 DITCH INLET CATCH BASIN</b>	
(NTS)	
WESTECH ENG.	DETAIL NO. 3130

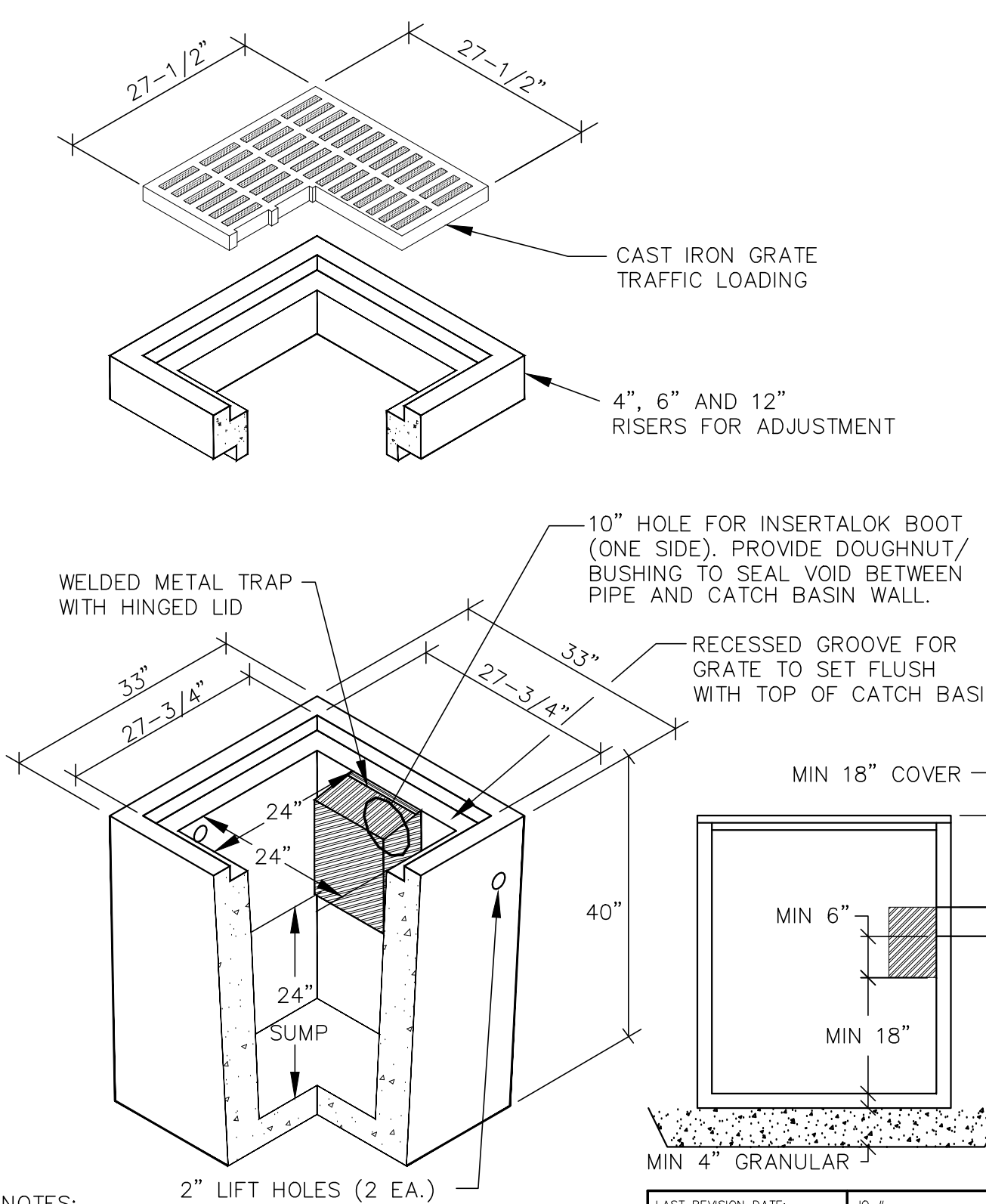


**SECTION**  
NTS

**NOTES:**

- SEE DRAWINGS FOR LOCATION & NUMBER OF WHEEL STOPS, INCLUDING DIMENSION FROM CURB, EDGE OF PAVEMENT OR BUILDING AS APPLICABLE.
- UNLESS OTHERWISE SPECIFIED OR SHOWN ON SITE PLAN, SET WHEEL STOPS 2 FEET FROM FACE OF CURB OR EDGE OF PAVEMENT, MEASURED FROM THE FACE OF THE WHEEL STOP (VEHICLE SIDE) TO FACE OF CURB (OR EDGE OF PAVEMENT). SET BACK FROM PROPERTY LINES PER CITY STANDARDS (3' MIN). MIN SETBACK FROM BUILDINGS AS SHOWN ON DWGS.
- FOR USE ON HEAD-IN PARKING WITHOUT FULL HEIGHT CURBS, OR WHERE A SIDEWALK ALONG HEAD-IN PARKING IS LESS THAN 6 FEET WIDE.

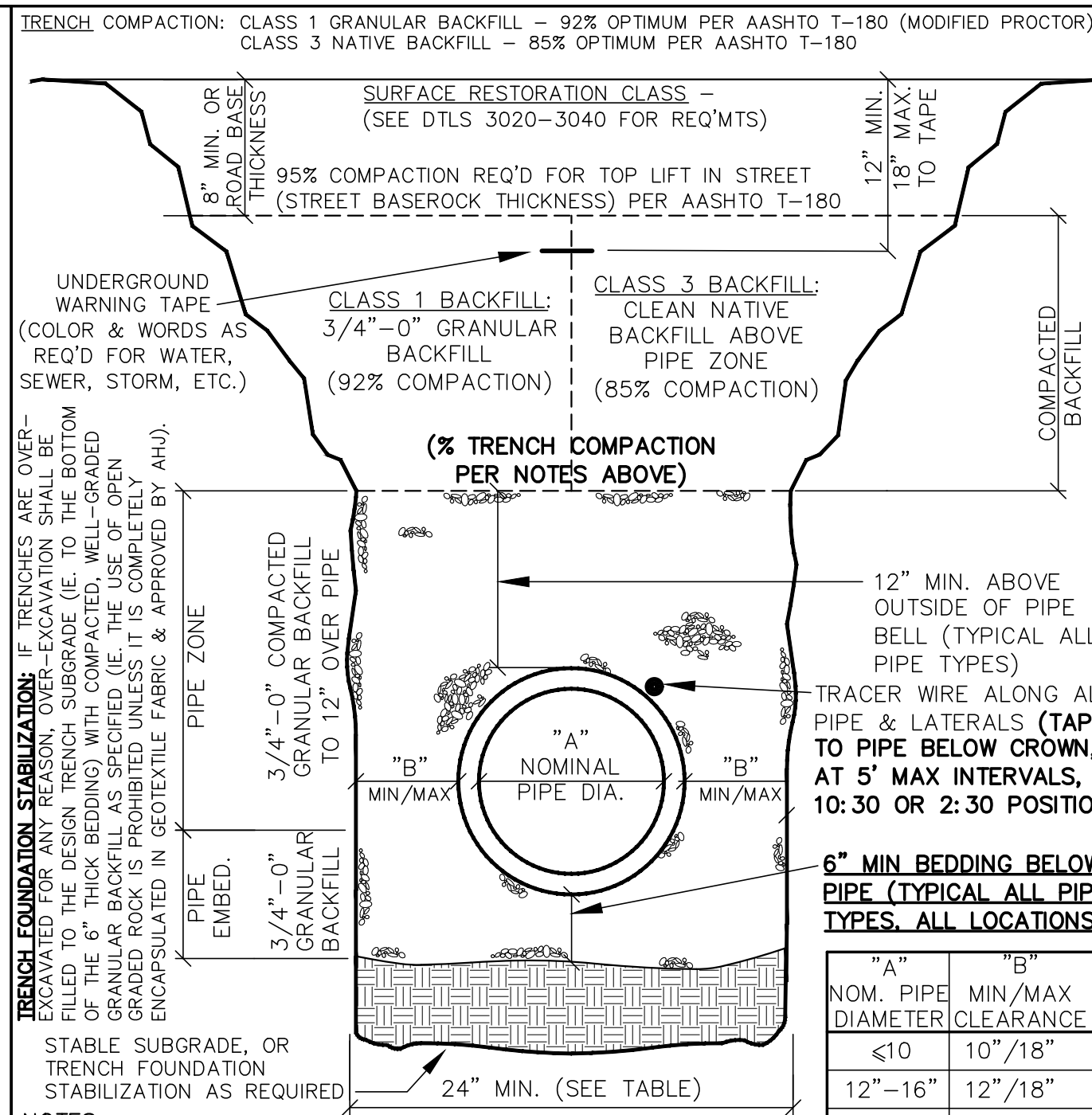
LAST REVISION DATE:	JO #
FEB 2013	STANDARD
<b>PRECAST WHEELSTOP DETAIL</b>	
(NTS)	
WESTECH ENG.	DETAIL NO. 2396



**NOTES:**

- SEE CONSTRUCTION DRAWINGS FOR PIPE SIZE, LOCATION AND INVERT ELEVATION.
- CONCRETE SHALL BE 4000 PSI @ 28 DAYS.
- REBAR SHALL CONFORM TO ASTM A615 GRADE 60.
- REBAR SHALL BE MIN. #4 BARS @ 6" C.C.
- SET CB SQUARE WITH BUILDINGS OR WITH EDGE OF PARKING LOT OR DRIVEWAY WHEREIN IT LIES.
- ADJUST PAVING SO WATER FLOWS TO CB WITH NO PONDING

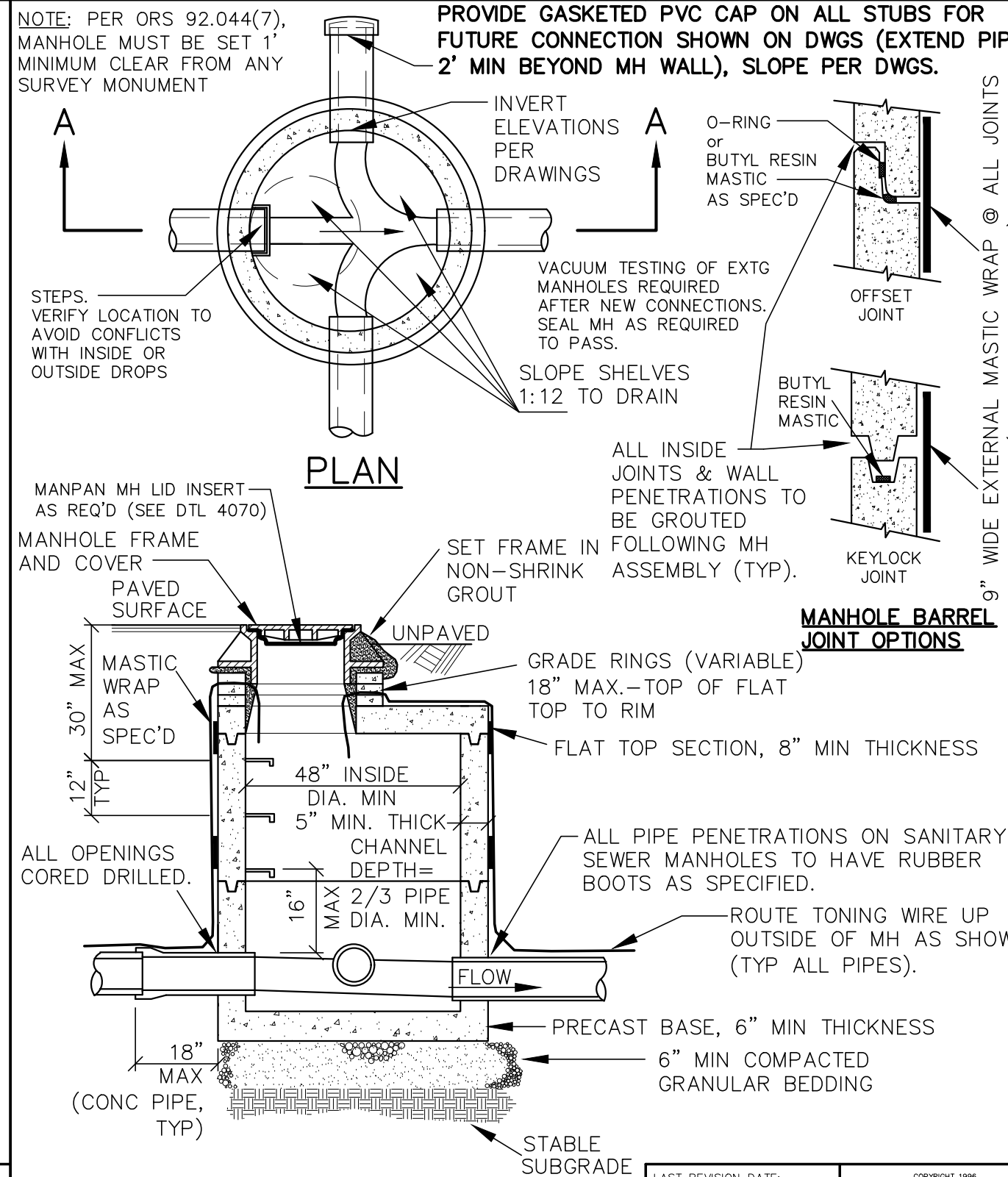
LAST REVISION DATE:	JO #
NOV 2018	STANDARD
<b>PARKING LOT CATCH BASIN (PRECAST CONCRETE)</b>	
(NTS)	
WESTECH ENG.	DETAIL NO. 3150



**NOTES:**

- CLASS 1 REQ'D. UNDER ALL EXIST. OR FUTURE IMPROVED AREAS INCLUDING SIDEWALKS.
- WHERE NEW PIPING IS IN SAME ALIGNMENT AS EXISTING PIPING, THE PIPE EMBEDMENT SHALL EXTEND TO A MIN. OF 6" BELOW THE NEW PIPING OR 6" BELOW EXISTING PIPING, WHICHEVER IS DEEPER.
- FOR FLEXIBLE PIPE, BOTTOM OF TRENCH SHORING SHALL BE ABOVE PIPE SPRINGLINE PRIOR TO COMPACTING BACKFILL BELOW THE PIPE SPRINGLINE AND UNDER THE PIPE HAUNCHES.
- MINIMUM CLEARANCES SHOWN ("B") ASSUMES STANDARD 6" WALL TRENCH BOXES SET ON TRENCH BOTTOM. AND REPRESENTS WIDTH REQUIRED TO CONSOLIDATE GRANULAR MATERIAL UNDER PIPE HAUNCHES (TO AVOID LOSS OF SIDE SUPPORT WHEN TRENCH BOX IS MOVED OR PULLED FORWARD). TRENCH WIDTH REDUCTION REQUIRES PRIOR APPROVAL BASED ON ACTUAL TRENCH SHORING PROPOSED.

LAST REVISION DATE:	JO #
FEB 2020	STANDARD
<b>TRENCH BACKFILL, BEDDING, AND PIPE ZONE</b>	
(NTS)	
WESTECH ENG.	DETAIL NO. 3010

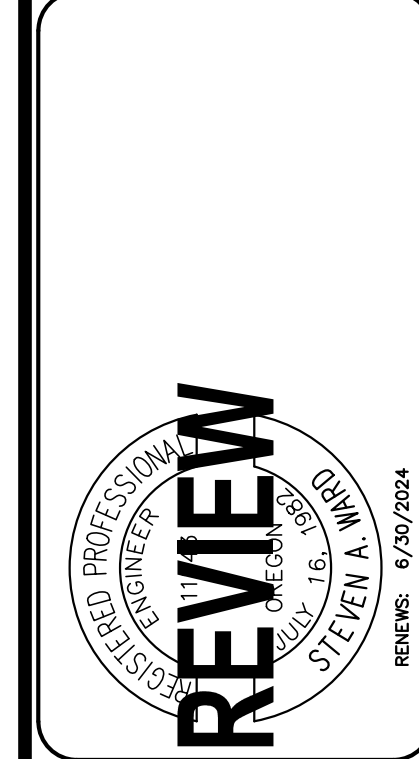


**NOTES:**

- PRECAST SECTIONS SHALL MEET OR EXCEED ASTM C-478, ALL CHANNELS & GROUTING TO BE SMOOTH.
- WATERTIGHT O-RING OR MASTIC JOINTS REQUIRED, W/EXTERNAL SEAL AT BARREL JOINTS & PICKHOLES.
- STEPS TO BE POLYPROPYLENE PLASTIC WITH GRADE 60 REINFORCING ROD. ADD STEPS TO EXTG CONNECTION MH IF EXTG STEPS ARE ABSENT.

LAST REVISION DATE:	JO #
AUG 2020	STANDARD
<b>FLAT TOP MANHOLE FOR 21" PIPE AND SMALLER (SEWER &amp; STORM)</b>	
(NTS)	
WESTECH ENG.	DETAIL NO. 4020

VERIFICATION SCALE	DATE	NO.	DESCRIPTION	BY
1"				
0				
IF NOT ONE INCH ON SCALE, INDICATE SCALE ACCURACY				
VERIFIED				
SW				
DRN.				
CKD.				
DATE: 11/2022				



**WESTECH ENGINEERING, INC.**  
CONSULTING ENGINEERS AND PLANNERS

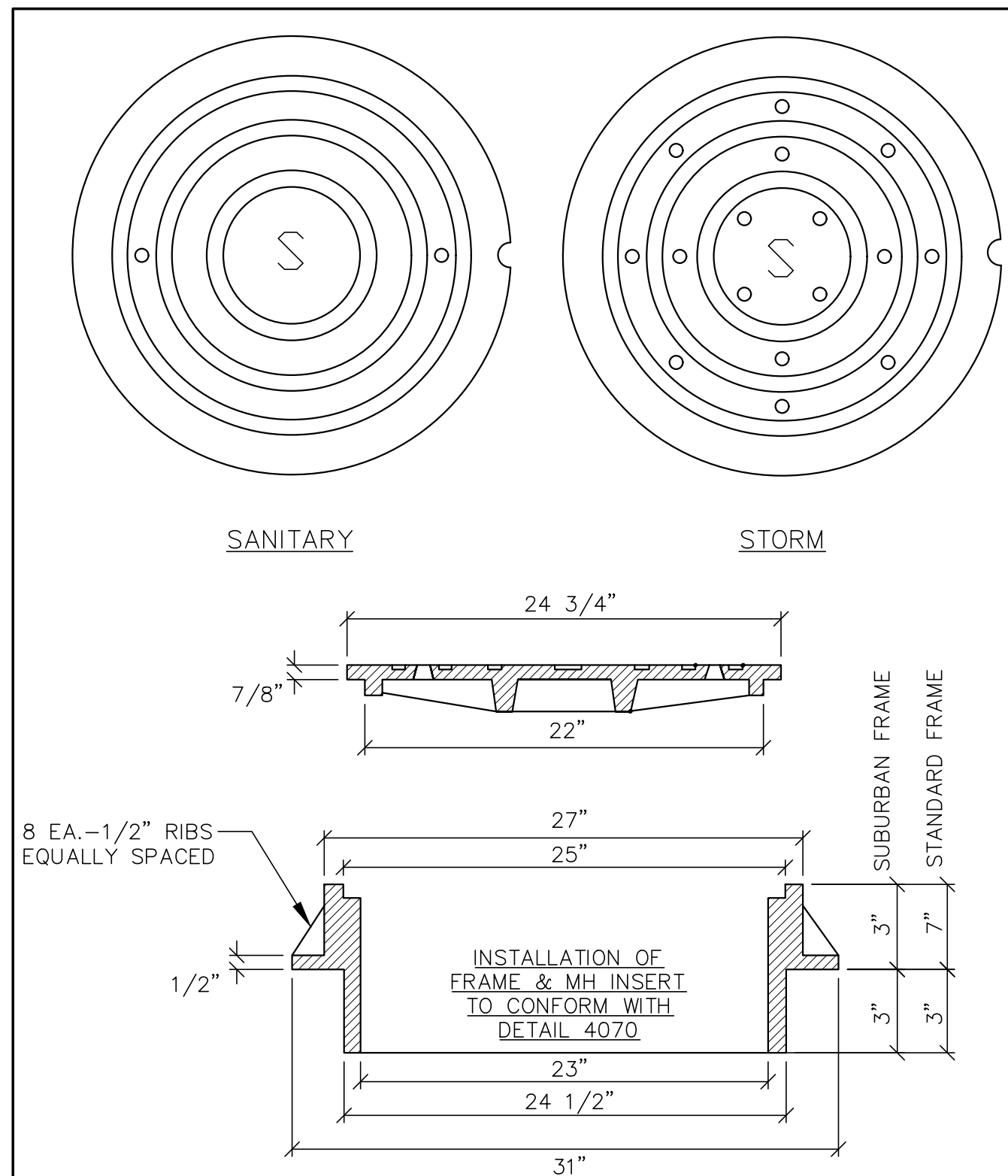
3841 Fairview Industrial Dr. S.E., Suite 100, Salem, OR 97302  
Phone: (503) 585-2474 Fax: (503) 585-3986  
E-mail: westech@westech-eng.com

**REID SAUNDERS - NEW OFFICE**

**CONSTRUCTION DETAILS**

**DRAWING C5.0**

**JOB NUMBER 3391.0000.0**

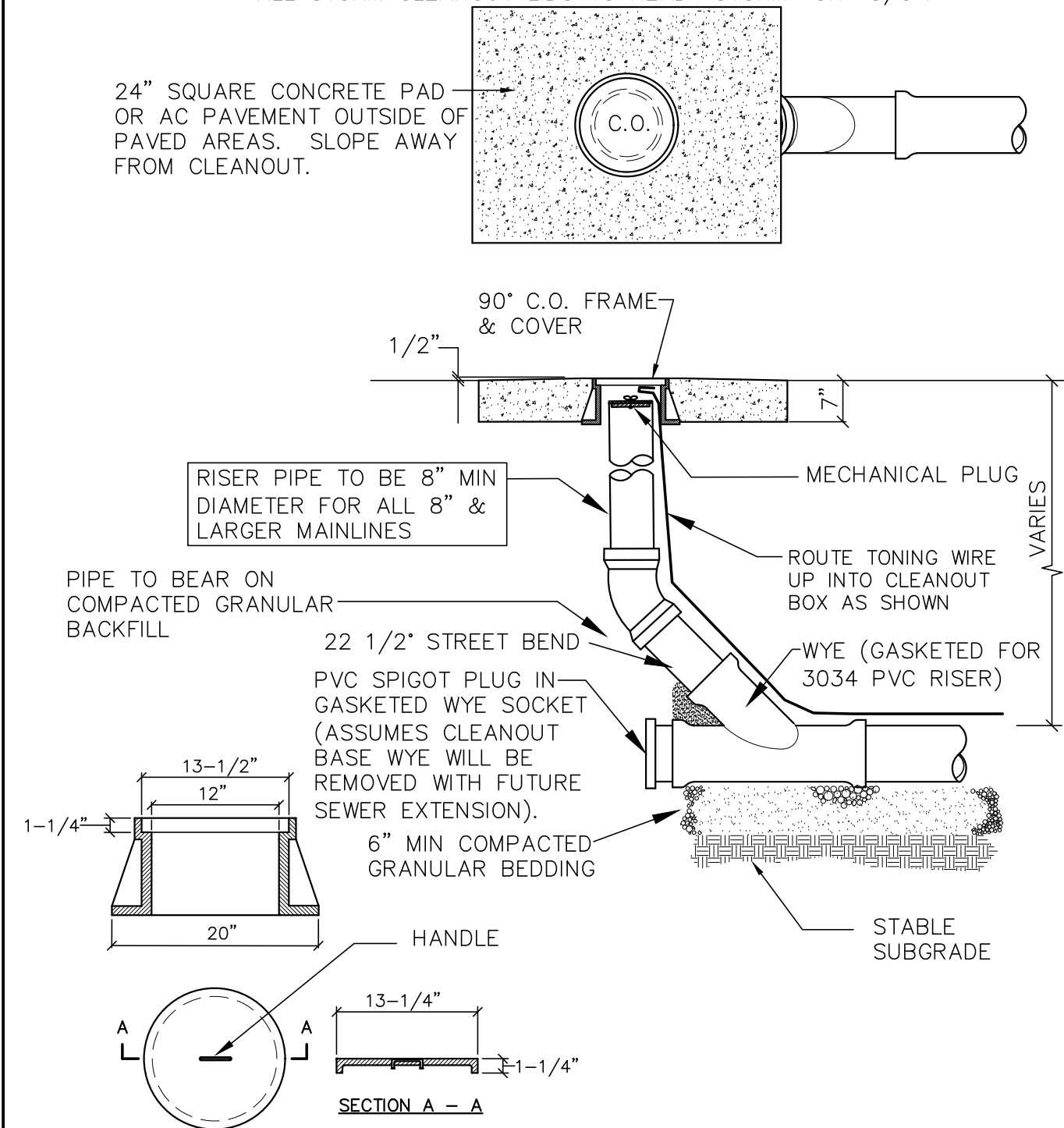


NOTES:

1. COVER AND FRAME SHALL BE GRAY CAST IRON  
ASTM A-48, CLASS 30.
2. COVER AND FRAME TO BE MACHINED TO A TRUE  
BEARING ALL AROUND.
3. NOTCH LID FOR LIFTING HOOK.

LAST REVISION DATE: DEC 2015	JO # STANDARD
<p><b>MANHOLE FRAME AND COVER</b>  <b>(STANDARD AND SUBURBAN)</b></p> <p>(NTS)</p>	
WESTECH ENG.	DETAIL NO. 4050

CLEANOUT COVERS:	ALL SEWER CLEANOUT LIDS TO READ "SEWER"
	ALL STORM CLEANOUT LIDS TO READ "STORM" OR "C/O".



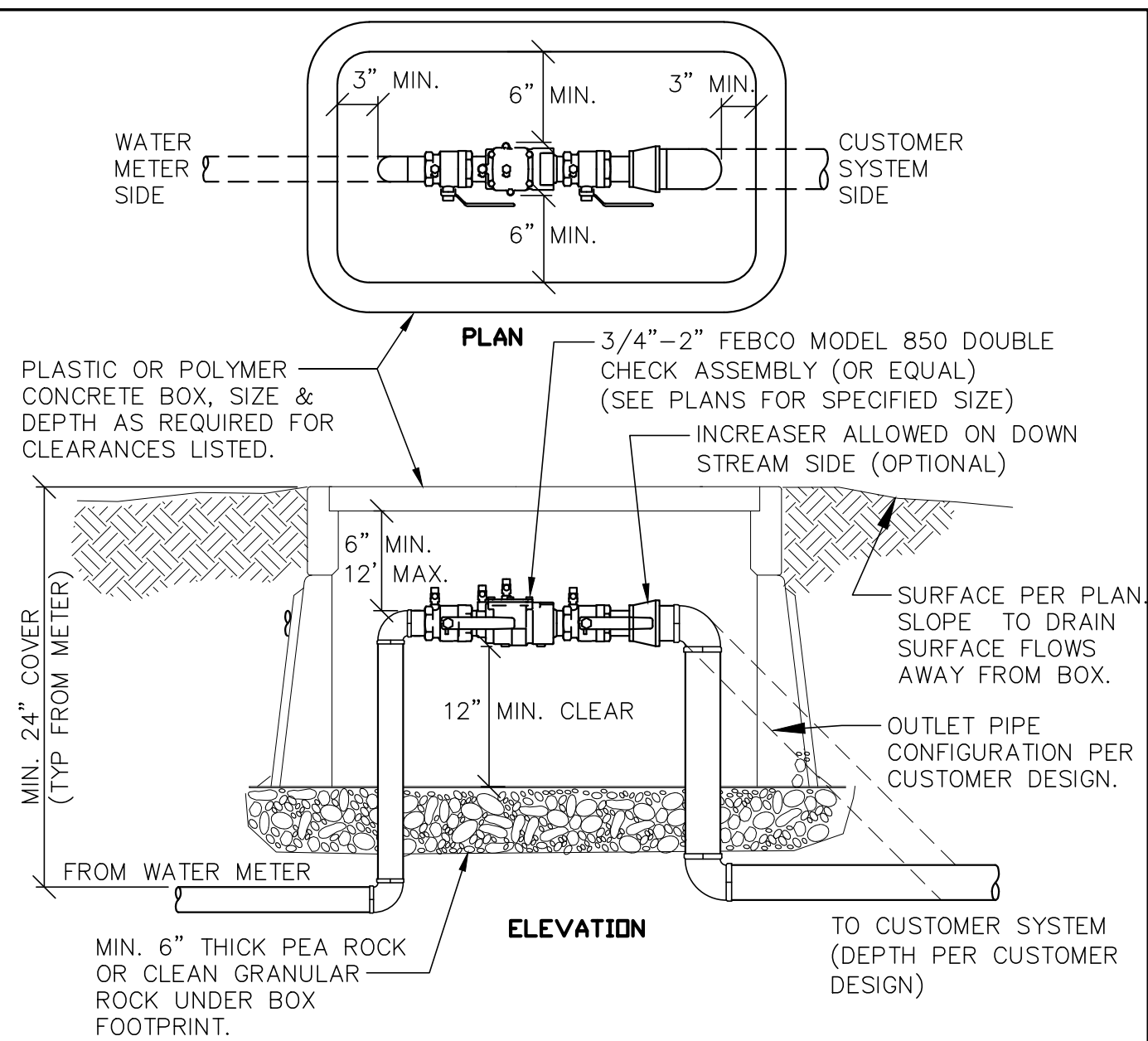
CLEANOUT FRAME & COVER

- NOTES:

1. USE INLAND FOUNDRY MODEL 240 FRAME & COVER IN ALL AREAS.
2. COVER AND FRAME SHALL BE GRAY CAST IRON ASTM A-48, CLASS 30.
3. COVER AND FRAME TO BE MACHINED TO A TRUE BEARING ALL AROUND.

ALL CONCRETE SHALL BE 3300 PSI @ 28  
DAYS MAX 5" SLUMP 4.5% AIR (+1.5%)

LAST REVISION DATE: AUG 2020	COPYRIGHT 1999 WESTECH ENGINEERS, INC.
MAINLINE CLEANOUT (NTS)	
WESTECH ENG.	DETAIL NO. 4110



NOTES:

- |  |  |                     |      |          |          |
|--|--|---------------------|------|----------|----------|
| 1. VERIFY THE ENCLOSURE/BOX DIMENSIONS & DEPTH ARE ADEQUATE FOR CLEARANCES SHOWN, BASED ON THE SIZE OF THE DCA AND FITTINGS ACTUALLY PROVIDED & INSTALLED. | <table border="1"> <tr> <td>LAST REVISION DATE:</td> <td>JO #</td> </tr> <tr> <td>AUG 2015</td> <td>STANDARD</td> </tr> </table> | LAST REVISION DATE: | JO # | AUG 2015 | STANDARD |
| LAST REVISION DATE:  |  | JO #                |      |          |          |
| AUG 2015   | STANDARD   |                     |      |          |          |
| 2. ENCLOSURE/BOX SHALL BE CENTERED OVER THE COMPLETED DOUBLE CHECK ASSEMBLY.   | <p align="center"><b>2" AND SMALLER<br/>DOUBLE CHECK VALVE<br/>ASSEMBLY (DCA)</b></p> <p align="center">(NTS)</p>                |                     |      |          |          |
| 3. PER OAR 333-61-0071, DCA SHALL NOT BE SUBJECT TO CONTINUOUS IMMERSION.  |  |                     |      |          |          |
| 4. DCA'S SHALL BE INSTALLED ABOVE THE 100 YEAR FLOOD LEVEL UNLESS OTHERWISE APPROVED IN WRITING BY THE PUBLIC WORKS DIRECTOR.                              |  |                     |      |          |          |
| 5. BYPASS LINES AROUND DOUBLE CHECK ASSEMBLIES ARE NOT ALLOWED.  |  |                     |      |          |          |
| 6. DCA'S SHALL BE PROVIDED WITH BRASS OR PLASTIC PLUGS IN ALL TEST PORTS.  | <table border="1"> <tr> <td>DETAIL NO.</td> </tr> </table>   | DETAIL NO.          |      |          |          |
| DETAIL NO.   |  |                     |      |          |          |
| 7. DCA SHALL BE LOCATED ON PRIVATE PROPERTY, AND SHALL NOT BE INSTALLED IN SIDEWALKS OR AREAS SUBJECT TO VEHICULAR TRAFFIC.                                |  |                     |      |          |          |
| 8. THE PROPERTY OWNER IS RESPONSIBLE TO MAINTAIN A MINIMUM OF 3 FEET OF MAINTENANCE ACCESS WORKING CLEARANCE AROUND DCA ENCLOSURES/BOXES.                  |  |                     |      |          |          |
| 9. PRIOR TO REQUESTING APPROVAL OR FINAL INSPECTION BY THE CITY, CONTRACTOR SHALL HAVE DCA TESTED, AND COPIES OF TEST REPORTS PROVIDED TO PUBLIC WORKS.    |  |                     |      |          |          |
| 10. PROPERTY OWNER SHALL BE RESPONSIBLE TO PROVIDE FREEZE PROTECTION DURING COLD WEATHER PERIODS AS NECESSARY.   |  |                     |      |          |          |

LAST REVISION DATE: AUG 2015	JO # STANDARD
<p align="center"><b>2" AND SMALLER DOUBLE CHECK VALVE ASSEMBLY (DCA)</b></p> <p align="center">(NTS)</p>	
WESTECH ENG	DETAIL NO. <b>5311</b>