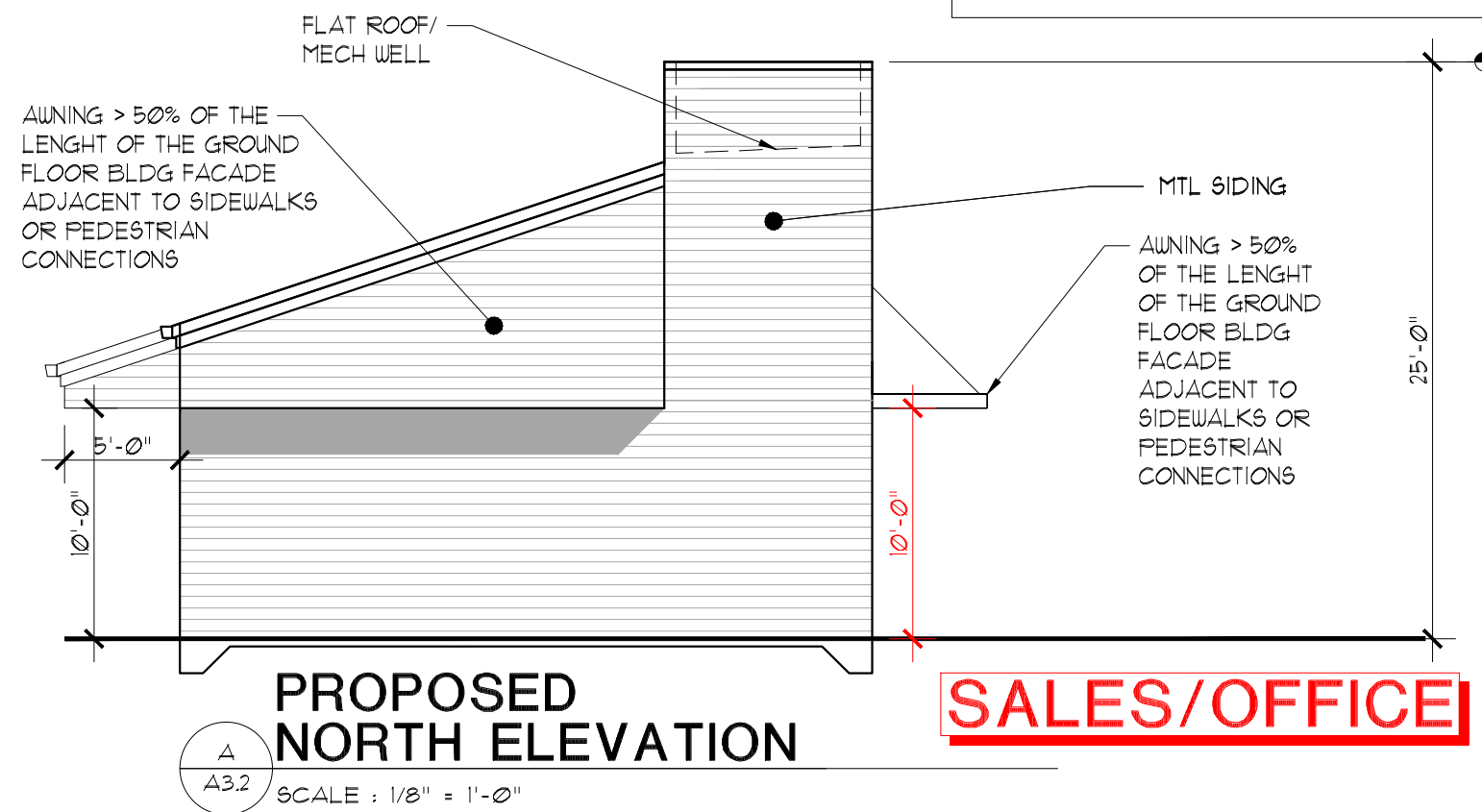
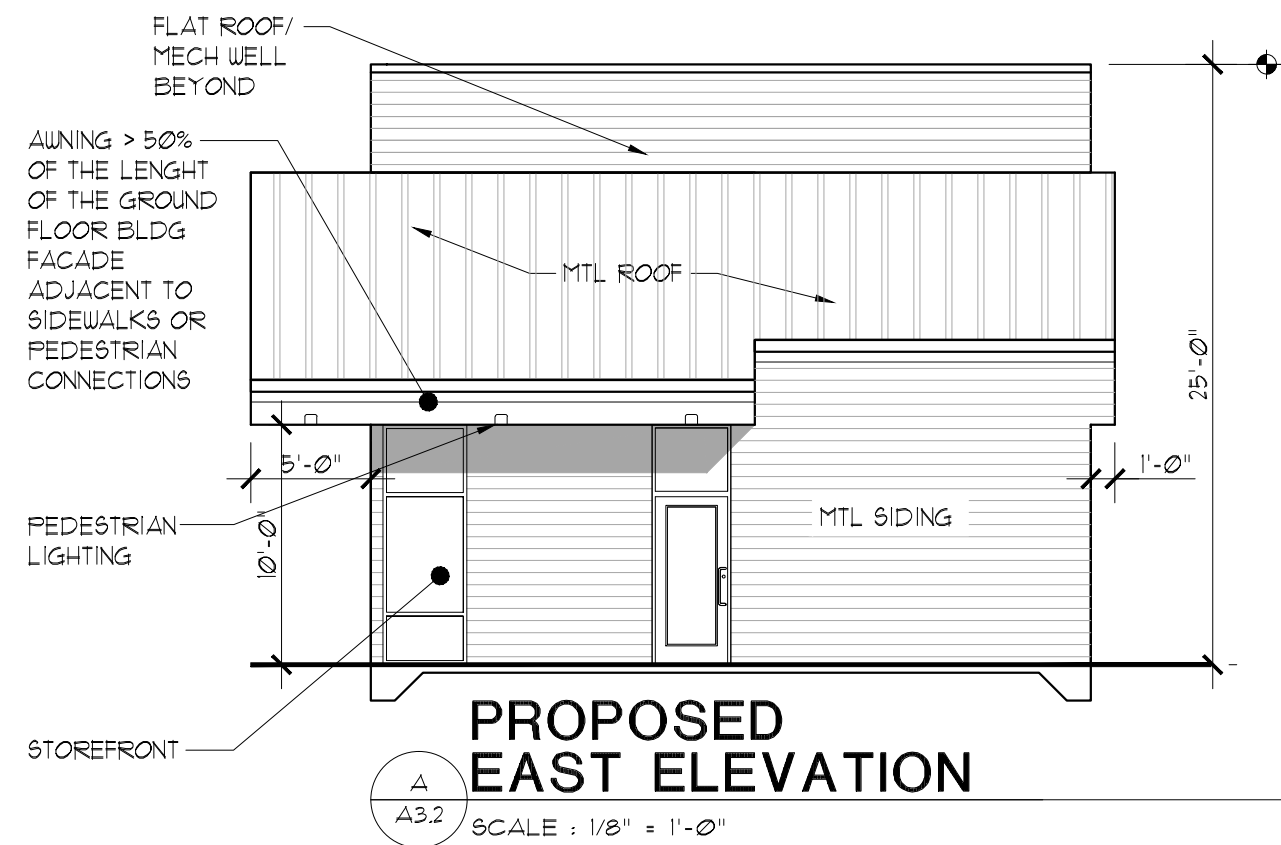


Sec. 112.035. - Height.
 (a) Calculation. Height is calculated by measuring the vertical distance between two points, a base point and a top point. Unless otherwise provided under the UDC, the base point is the lowest point on the grade abutting that which is being measured, and the top point is the highest point on that which is being measured.
 (2) Top point. The top point for purposes of measuring building and structure height shall be:
 (A) The highest point of the coping of a flat roof

Sec. 112.035. - Height.
 (a) Calculation. Height is calculated by measuring the vertical distance between two points, a base point and a top point. Unless otherwise provided under the UDC, the base point is the lowest point on the grade abutting that which is being measured, and the top point is the highest point on that which is being measured.
 (2) Top point. The top point for purposes of measuring building and structure height shall be:
 (A) The highest point of the coping of a flat roof



SALES/OFFICE