

Planning/Permit Application Center

City Hall / 555 Liberty St. SE / Room 320 / Salem, OR 97301-3513

503-588-6173 * planning@cityofsalem.net

If you need the following translated in Spanish, please call 503-588-6256.

Si usted necesita lo siguiente traducido en español, por favor llame 503-588-6256.

(For office use only)

Permit #:

Applicant's Consultant

Emerio Design: Roy Hankins

roy@emeriodesign.com

541-521-9797

Work site location and information

Street address or location of subject property	
Lot size	
Proposed use or type of development	

People information

	Name	Full Mailing Address	Phone Number and Email address
Applicant			

Project information


How many trees are on the property (10" or more dbh)? (Tree means any living, standing, woody plant that grows to 15 feet or more in height, typically with one main stem called a trunk, which is 10 inches or more in dbh, and possesses an upright arrangement of branches and leaves (SRC 808.005(n)). dbh means diameter at breast height. Diameter at breast height is a tree's diameter measured in inches at 4½ feet above grade.).	
How many trees are proposed for removal? Removal means to cut down a tree or remove 30% or more of the crown, trunk, or root system of a tree; or to damage a trees so as to cause the tree to decline or die.	
How many trees are proposed for preservation?	200
What percentage of the total trees will be preserved?	
If any riparian corridors are present on the site, name of the waterway The riparian corridor boundary is measured 50 feet horizontally from the top of bank on each side of a stream with the exception of the Willamette River, which measures 75 feet horizontally from the top of bank.	Unnamed creek in the NW corner of property
How many trees within a riparian corridor are proposed for removal?	
What type of native vegetation within a riparian corridor proposed for removal? A list of native vegetation can be found in the Tree and Vegetation Technical Manual (SRC 808.005(o)).	
How many Oregon White Oaks 24" or more dbh are proposed for removal?	

Authorization by property owner(s)/applicant

*If the applicant and/or property owner is a Limited Liability Company (LLC), please also provide a list of all members of the LLC with your application.

Copyright release for government entities: I hereby grant permission to the City of Salem to copy, in whole or part, drawings and all other materials submitted by me, my agents, or representatives. This grant of permission extends to all copies needed for administration of the City's regulatory, administrative, and legal functions, including sharing of information with other governmental entities.

Electronic signature certification: By attaching an electronic signature (whether typed, graphical or free form) I certify herein that I have read, understood and confirm all the statements listed above and throughout the application form.

Authorized Signature:  _____

Print Name: _____ **Date:** _____

Submittal requirements

- 1) **Site Plan:** Of a size and form and in the number of copies meeting the standards established by the Planning Administrator, containing information found in SRC 808.035(c)(1).
- 2) **Written Statement:** If the proposed tree conservation plan results in removal of significant trees, trees or native vegetation in a riparian corridor or shows preservation of less than 25 percent of the trees on site, a statement shall be provided demonstrating that there are no reasonable design alternatives that would enable preservation of such trees.
- 3) **Additional items that may be submitted or requested:** When a riparian corridor is located on the property, the tree conservation plan shall include the information found in SRC 808.035(c)(2).

Appeal and review

The decision on a Tree Conservation Plan may be appealed, pursuant to SRC 300.1010. Only the applicant or the owner of the subject property have standing to appeal the decision of a Tree Conservation Plan. The decision of Hearings Officer on appeal shall be the final decision of the City.

Not using Internet Explorer?

Save the file to your computer and email to planning@cityofsalem.net.



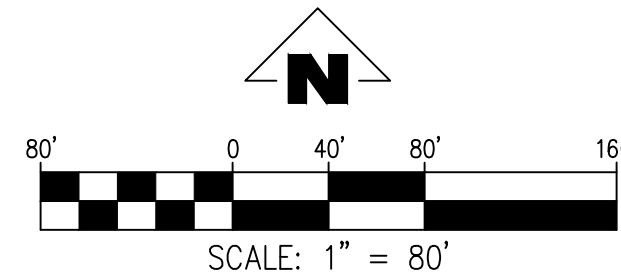
August 30, 2021

City of Salem
Planning Department
555 Liberty St. SE
Salem, OR 97301

RE: Meyer Farm Subdivision: Tree Conservation Plan Narrative

Emerio Design represents the applicant for a single-family residential subdivision proposed at 4540 Pringle Road SE in Salem, Oregon. This application proposes to preserve 30.72% of the total trees on the subject property. Of the total 679 trees on the property, only 6 Oak trees 24" or more DBH are proposed for removal (See reference table below) and one (tree 2579) is within the required 12th Street right-of-way improvement area. A tree assessment was conducted by Teragan & Associates and included with the subdivision application. The proposed removal of the identified significant oak trees is due to the overall health of the tree, required grading with the development of this property, or required improvements.

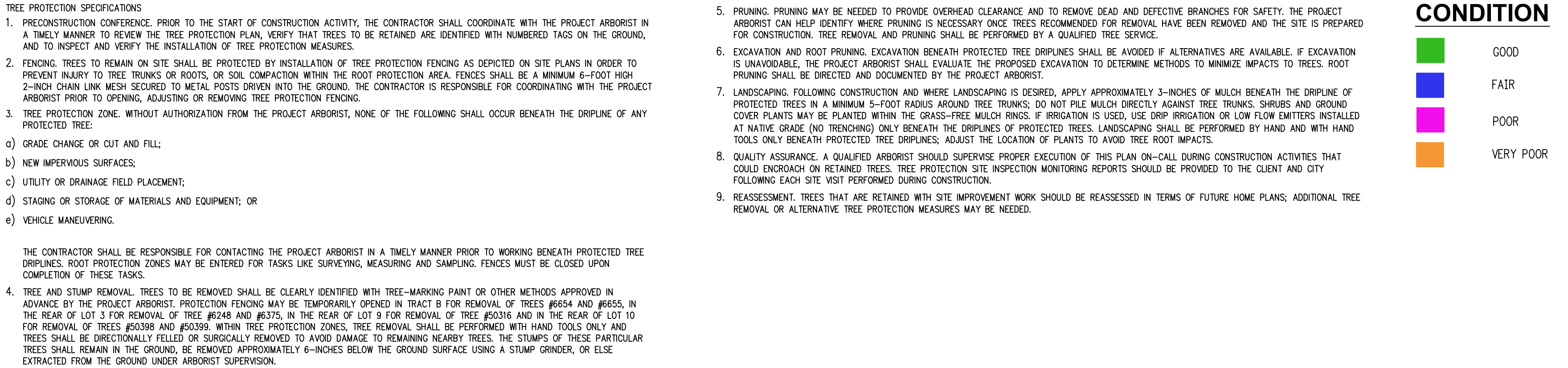
Tree Inventory				
Oregon White Oak 24" or more DBH Proposed for Removal				
Tree #	Species	DBH	Treatment	Reverence Sheet #
4721	Oak	28"	Removal	P3.1
4806	Oak	24"	Removal	P3.1
4919	Oak	28"	Removal	P3.1
4923	Oak	28"	Removal	P3.1
2579*	Oak	32"	Removal	P3.3
3194	Oak	24"	Removal	P3.3
* Tree included in resonable alternatives analysis street tree removal permit as this tree in within the public right-of-way improvement area				



4540 PRINGLE RD SE
TAX MAP - 3000 & 3002
TAX MAP - 083W11BC
SW1/4 NW1/4 SEC11 T8S R3W W.M.
SALEM, OREGON

REVISIONS

SHEET
P3.0 OF **32**

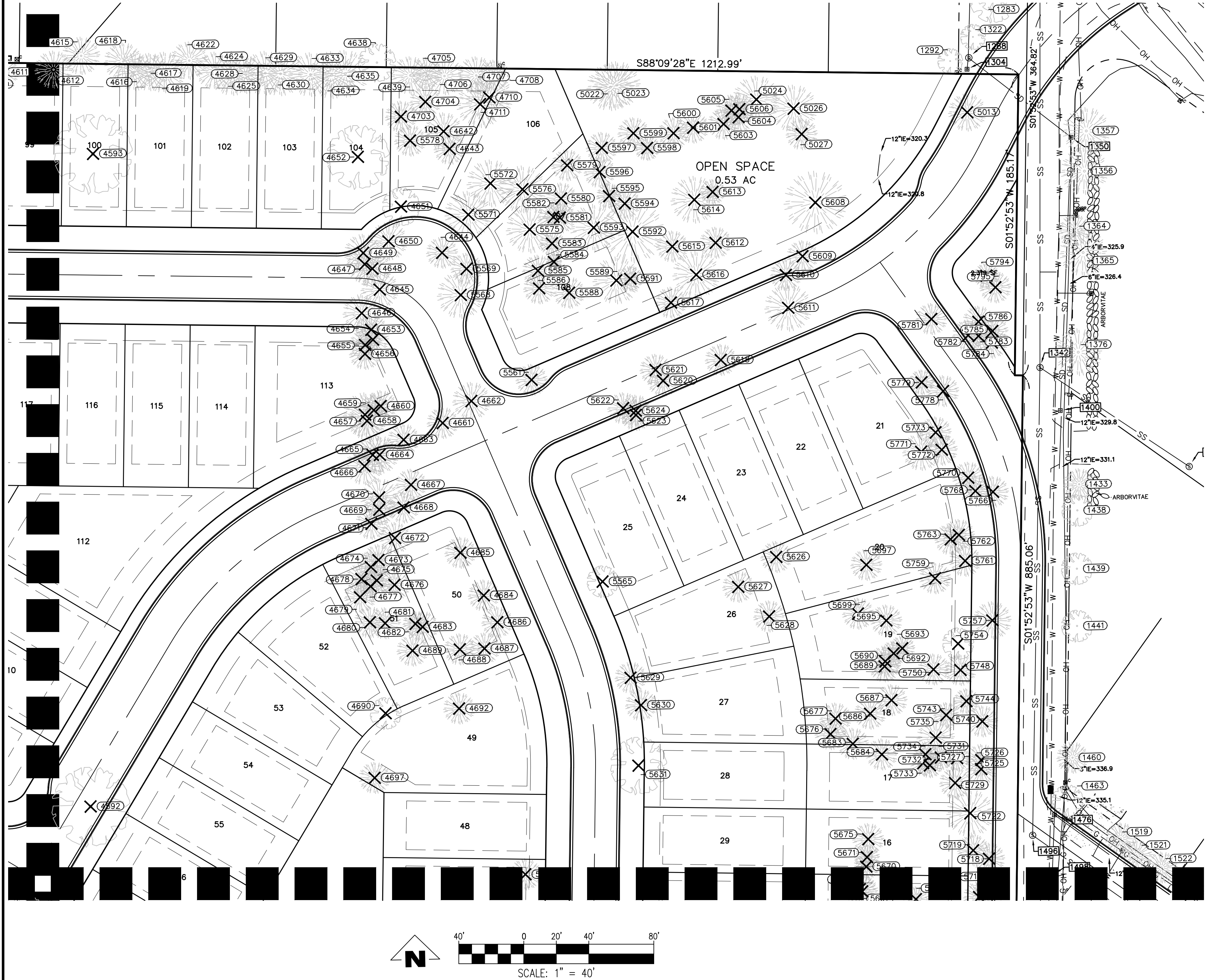


REE #	SPECIES	DBH*	REMOVE
4786	FIR	20	
4788	FIR	14	
4789	ALDER	10	
4790	OAK	14	REMOVE
4791	OAK	16	REMOVE
4792	OAK (x2)	14	REMOVE
4794	OAK	14	REMOVE
4795	OAK	18	REMOVE
4796	OAK	12	REMOVE
4797	OAK	18	REMOVE
4798	OAK	16	REMOVE
4799	OAK (x3)	12	REMOVE
4800	OAK (x2)	10	REMOVE
4801	OAK	16	
4802	OAK	10	
4803	OAK	10	
4804	OAK	10	
4805	OAK	14	
4806	OAK	24	
4807	OAK	10	
4808	OAK	12	REMOVE
4809	OAK	14	REMOVE
4810	MAPLE (x3)	10	REMOVE
4811	OAK	10	REMOVE
4812	OAK	14	REMOVE
4814	FIR	28	REMOVE
4816	OAK	10	REMOVE
4817	OAK	10	
4818	OAK	10	
4819	FIR	20	
4820	DECID	10	
4821	FIR	20	
4822	FIR	24	
4823	FIR (x2)	24	
4825	FIR	24	
4828	OAK	14	
4829	OAK (x2)	10	
4830	OAK	16	
4831	FIR	30	
4834	FIR	18	
4835	OAK	16	
4836	FIR	20	
4838	FIR	32	
4839	DECID	12	
4840	OAK	10	
4841	FIR	32	
4842	OAK	10	
4843	OAK	14	
4844	FIR	24	
4845	OAK	16	
4848	OAK	12	
4850	FIR	30	
4851	FIR	28	
4852	FIR	30	
4853	FIR	28	
4854	FIR	12	
4855	FIR	32	
4856	FIR	16	
4857	FIR	16	
4858	OAK	12	
4859	OAK (x2)	12	
4860	OAK	13	
4861	OAK	16	
4862	OAK (x2)	12	
4868	OAK	14	
4869	OAK	14	
4870	OAK	14	
4871	OAK (x2)	12	
4872	FIR	28	
4873	OAK	12	
4874	OAK (x3)	12	
4875	OAK	14	
4876			
4879	ALDER	10	
4883	ALDER	14	
4884	OAK	16	
4885	OAK	10	
4886	FIR	18	
4887	FIR	24	
4888	FIR	14	
4889	FIR	10	
4890	OAK	20	
4891	OAK (x2)	14	REMOVE
4894	OAK	10	
4895	FIR	30	
4896	OAK (x2)	10	
4897	OAK	12	

DBH* DIAMETER AT BREAST HEIGHT, INCHES.

32

FILE:P:\0742-003 Meyer Farm\dwg\plan\0742-003_P3.1trep, Layout: P3.1 - TREE PRESERVATION NW, Plot Date: 8/31/2021 11:03 AM, by: Ian Feltis



TREE PROTECTION SPECIFICATIONS

- PRECONSTRUCTION CONFERENCE. PRIOR TO THE START OF CONSTRUCTION ACTIVITY, THE CONTRACTOR SHALL COORDINATE WITH THE PROJECT ARBORIST IN A TIMELY MANNER TO REVIEW THE TREE PROTECTION PLAN, VERIFY THAT TREES TO BE RETAINED ARE IDENTIFIED WITH NUMBERED TAGS ON THE GROUND, AND TO INSPECT AND VERIFY THE INSTALLATION OF TREE PROTECTION MEASURES.
- FENCING. TREES TO REMAIN ON SITE SHALL BE PROTECTED BY INSTALLATION OF TREE PROTECTION FENCING AS DEPICTED ON SITE PLANS IN ORDER TO PREVENT INJURY TO TREE TRUNKS OR ROOTS, OR SOIL COMPACTION WITHIN THE ROOT PROTECTION AREA. FENCES SHALL BE A MINIMUM 6-FOOT HIGH 2-INCH CHAIN LINK MESH SECURED TO METAL POSTS DRIVEN INTO THE GROUND. THE CONTRACTOR IS RESPONSIBLE FOR COORDINATING WITH THE PROJECT ARBORIST PRIOR TO OPENING, ADJUSTING OR REMOVING TREE PROTECTION FENCING.
- TREE PROTECTION ZONE. WITHOUT AUTHORIZATION FROM THE PROJECT ARBORIST, NONE OF THE FOLLOWING SHALL OCCUR BENEATH THE DRIPLINE OF ANY PROTECTED TREE:
 - GRADE CHANGE OR CUT AND FILL;
 - NEW IMPERVIOUS SURFACES;
 - UTILITY OR DRAINAGE FIELD PLACEMENT;
 - STAGING OR STORAGE OF MATERIALS AND EQUIPMENT; OR
 - VEHICLE MANEUVERING.
- TREE AND STUMP REMOVAL. TREES TO BE REMOVED SHALL BE CLEARLY IDENTIFIED WITH TREE-MARKING PAINT OR OTHER METHODS APPROVED IN ADVANCE BY THE PROJECT ARBORIST. PROTECTION FENCING MAY BE TEMPORARILY OPENED IN TRACT B FOR REMOVAL OF TREES #6654 AND #6655, IN THE REAR OF LOT 3 FOR REMOVAL OF TREE #6248 AND #6375, IN THE REAR OF LOT 9 FOR REMOVAL OF TREE #60316 AND IN THE REAR OF LOT 10 FOR REMOVAL OF TREES #60388 AND #60389. WITHIN TREE PROTECTION ZONES, TREE REMOVAL SHALL BE PERFORMED WITH HAND TOOLS ONLY AND TREES SHALL BE DIRECTIONALLY FELLED OR SURGICALLY REMOVED TO AVOID DAMAGE TO REMAINING NEARBY TREES. THE STUMPS OF THESE PARTICULAR TREES SHALL REMAIN IN THE GROUND, BE REMOVED APPROXIMATELY 6-INCHES BELOW THE GROUND SURFACE USING A STUMP GRINDER, OR ELSE EXTRACTED FROM THE GROUND UNDER ARBORIST SUPERVISION.

- PRUNING. PRUNING MAY BE NEEDED TO PROVIDE OVERHEAD CLEARANCE AND TO REMOVE DEAD AND DEFECTIVE BRANCHES FOR SAFETY. THE PROJECT ARBORIST CAN HELP IDENTIFY WHERE PRUNING IS NECESSARY ONCE TREES RECOMMENDED FOR REMOVAL HAVE BEEN REMOVED AND THE SITE IS PREPARED FOR CONSTRUCTION. TREE REMOVAL AND PRUNING SHALL BE PERFORMED BY A QUALIFIED TREE SERVICE.
- EXCAVATION AND ROOT PRUNING. EXCAVATION BENEATH PROTECTED TREE DRIPLINES SHALL BE AVOIDED IF ALTERNATIVES ARE AVAILABLE. IF EXCAVATION IS UNAVOIDABLE, THE PROJECT ARBORIST SHALL EVALUATE THE PROPOSED EXCAVATION TO DETERMINE METHODS TO MINIMIZE IMPACTS TO TREES. ROOT PRUNING SHALL BE DIRECTED AND DOCUMENTED BY THE PROJECT ARBORIST.
- LANDSCAPING. FOLLOWING CONSTRUCTION AND WHERE LANDSCAPING IS DESIRED, APPLY APPROXIMATELY 3-INCHES OF MULCH BENEATH THE DRIPLINE OF PROTECTED TREES IN A MINIMUM 5-FOOT RADIUS AROUND TREE TRUNKS; DO NOT PILE MULCH DIRECTLY AGAINST TREE TRUNKS. SHRUBS AND GROUND COVER PLANTS MAY BE PLANTED WITHIN THE GRASS-FREE MULCH RINGS. IF IRRIGATION IS USED, USE DRIP IRRIGATION OR LOW FLOW EMITTERS INSTALLED AT NATIVE GRADE (NO TRENCHING) ONLY BENEATH THE DRIPLINES OF PROTECTED TREES. LANDSCAPING SHALL BE PERFORMED BY HAND AND WITH HAND TOOLS ONLY BENEATH PROTECTED TREE DRIPLINES; ADJUST THE LOCATION OF PLANTS TO AVOID TREE ROOT IMPACTS.
- QUALITY ASSURANCE. A QUALIFIED ARBORIST SHOULD SUPERVISE PROPER EXECUTION OF THIS PLAN ON-CALL DURING CONSTRUCTION ACTIVITIES THAT COULD ENDOUR ON RETAINED TREES. TREE PROTECTION SITE INSPECTION MONITORING REPORTS SHOULD BE PROVIDED TO THE CLIENT AND CITY FOLLOWING EACH SITE VISIT PERFORMED DURING CONSTRUCTION.
- REASSESSMENT. TREES THAT ARE RETAINED WITH SITE IMPROVEMENT WORK SHOULD BE REASSESSSED IN TERMS OF FUTURE HOME PLANS; ADDITIONAL TREE REMOVAL OR ALTERNATIVE TREE PROTECTION MEASURES MAY BE NEEDED.

CONDITION

- GOOD
- FAIR
- POOR
- VERY POOR

TREE #	SPECIES	DBH+	REMOVE
1283	OAK	12	
1356	FIR	18	
1357	FIR	18	
1365	FIR	20	
1376	FIR	14	
1433	FIR	10	
1439	BIRCH	12	
1441	BIRCH	12	
1521	PINE	18	
4592	WALNUT	32	REMOVE
4593	WALNUT	24	REMOVE
4612	FIR (x2)	14	
4615	FIR	12	
4616	FIR	14	
4617	FIR	14	
4618	PINE	14	
4619	FIR	16	
4622	FIR	14	
4624	FIR	16	
4625	FIR	18	
4628	FIR	16	
4629	FIR	22	
4630	FIR	16	
4633	FIR	18	
4634	FIR (x2)	22	
4635	FIR	20	
4638	DECD	14	
4639	FIR	14	
4642	FIR	16	REMOVE
4643	FIR	16	REMOVE
4644	FIR	14	REMOVE
4645	FIR	18	REMOVE
4646	FIR	12	REMOVE
4647	FIR	18	REMOVE
4648	FIR	14	REMOVE
4649	FIR	18	REMOVE
4650	FIR	18	REMOVE
4651	MADRONA	10	REMOVE
4652	WALNUT	28	REMOVE
4653	FIR	12	REMOVE
4654	FIR	16	REMOVE
4655	FIR	14	REMOVE
4656	FIR	14	REMOVE
4657	FIR	20	REMOVE
4658	FIR	18	REMOVE
4659	FIR	18	REMOVE
4660	FIR	12	REMOVE
4661	FIR	12	REMOVE
4662	FIR	14	REMOVE
4663	FIR	14	REMOVE
4664	FIR	18	REMOVE
4665	FIR	20	REMOVE
4666	FIR	14	REMOVE
4667	FIR	14	REMOVE
4668	FIR	14	REMOVE
4669	FIR	16	REMOVE
4670	FIR	14	REMOVE
4671	FIR	16	REMOVE
4672	FIR	10	REMOVE
4673	FIR	16	REMOVE
4674	FIR	16	REMOVE
4675	FIR	14	REMOVE
4676	FIR	14	REMOVE
4677	FIR	12	REMOVE
4678	FIR	18	REMOVE
4679	FIR	18	REMOVE
4680	FIR	24	REMOVE
4681	FIR	18	REMOVE
4682	FIR	12	REMOVE
4683	FIR	18	REMOVE
4684	FIR	12	REMOVE
4685	FIR	10	REMOVE
4686	FIR	10	REMOVE
4687	FIR	16	REMOVE
4688	FIR (x2)	12	REMOVE
4689	FIR	24	REMOVE
4690	MADRONA	10	REMOVE
4692	FIR	16	REMOVE
4697	FIR	10	
4703	FIR	20	REMOVE
4704	FIR	18	REMOVE
4705	FIR	12	
4706	FIR	16	REMOVE
4707	FIR	16	
4708	FIR	12	

TREE #	SPECIES	DBH+	REMOVE
4710	FIR	16	REMOVE
4711	FIR	18	REMOVE
5013	MADRONA	12	REMOVE
5022	FIR	16	
5023	FIR	32	
5024	FIR	18	REMOVE
5026	FIR	28	REMOVE
5027	FIR	16	REMOVE
5561	FIR	14	REMOVE
5565	MADRONA	10	REMOVE
5568	FIR	20	REMOVE
5569	FIR	16	REMOVE
5571	FIR	18	REMOVE
5572	FIR	20	REMOVE
5575	FIR	20	REMOVE
5576	FIR	20	REMOVE
5578	FIR	18	REMOVE
5579	FIR	16	REMOVE
5580	FIR	18	REMOVE
5581	FIR	16	REMOVE
5582	FIR	14	REMOVE
5583	FIR	10	REMOVE
5584	FIR	12	REMOVE
5585	FIR	16	REMOVE
5586	FIR	12	REMOVE
5588	FIR	16	REMOVE
5589	FIR	22	REMOVE
5591	FIR	14	REMOVE
5592	FIR	26	REMOVE
5593	FIR	20	REMOVE
5594	FIR	16	REMOVE
5595	FIR	10	REMOVE
5596	FIR	16	REMOVE
5597	FIR	16	REMOVE
5598	FIR	14	REMOVE
5599	FIR	18	REMOVE
5600	FIR	16	REMOVE
5601	FIR	16	REMOVE
5603	FIR	16	REMOVE
5604	FIR	18	REMOVE
5605	FIR	18	REMOVE
5606	FIR	18	REMOVE
5608	FIR	26	REMOVE
5609	FIR	10	REMOVE
5610	FIR	18	REMOVE
5611	FIR	20	REMOVE
5612	FIR	14	REMOVE
5613	FIR	10	REMOVE
5614	FIR	18	REMOVE
5615	FIR	18	REMOVE
5616	FIR	18	REMOVE
5617	FIR	16	REMOVE
5618	FIR	16	REMOVE
5620	FIR	16	REMOVE
5621	FIR	18	REMOVE
5622	FIR	18	REMOVE
5623	FIR	16	REMOVE
5624	FIR	14	REMOVE
5626	FIR	18	REMOVE
5627	FIR	12	REMOVE
5628	FIR	12	REMOVE
5629	FIR	12	REMOVE
5630	FIR	12	REMOVE
5631	CTNWD	28	REMOVE
5633	FIR	12	
5669	FIR	12	
5670	FIR	12	REMOVE
5671	PINE	10	REMOVE
5672	PINE	10	
5675	PINE	10	REMOVE
5676	FIR	14	REMOVE
5677	FIR	12	REMOVE

TREE #	SPECIES	DBH+	REMOVE
5683	PINE	10	REMOVE
5684	FIR	12	REMOVE
5686	FIR	10	REMOVE
5687	PINE	12	REMOVE
5689	FIR	12	REMOVE
5690	PINE	12	REMOVE
5692	FIR	10	REMOVE
5693	FIR	12	REMOVE
5695	PINE	14	REMOVE
5697	PINE	14	REMOVE
5699	PINE	12	REMOVE
5716	PINE	12	
5718	PINE	10	REMOVE
5719	FIR	12	REMOVE
5722	FIR	16	REMOVE
5725	PINE	12	REMOVE
5726	PINE	12	REMOVE
5727	PINE	10	REMOVE
5729	PINE	14	REMOVE
5731	PINE	10	REMOVE
5732	PINE	10	REMOVE
5733	PINE	10	REMOVE
5734	PINE	10	REMOVE
5735	PINE	10	REMOVE
5740	PINE	10	REMOVE
5743	PINE	10	REMOVE
5744	FIR	10	REMOVE
5748	FIR	10	REMOVE
5750	PINE	12	REMOVE
5754	MADRONA	10	REMOVE
5757	PINE	12	REMOVE
5759	PINE	12	REMOVE
5761	FIR	10	REMOVE
5762	FIR	10	REMOVE
5763	PINE	10	REMOVE
5766	PINE	12	REMOVE
5768	PINE	10	REMOVE
5770	FIR	10	REMOVE
5771	FIR	12	REMOVE
5772	FIR	10	REMOVE
5773	PINE	10	REMOVE
5778	FIR	10	REMOVE
5779	PINE	12	REMOVE
5781	PINE	10	REMOVE
5782	PINE	12	REMOVE
5783	FIR	10	REMOVE
5784	PINE	10	REMOVE
5785	FIR	10	REMOVE
5786	FIR	10	REMOVE
5794	PINE	10	REMOVE
5795	PINE	12	REMOVE

DBH+ DIAMETER AT BREAST HEIGHT, INCHES.
INDICATES OFFSITE TREE, OR TREE NOT
LOCATED WITHIN PROJECT AREA, NOT
INCLUDED IN TREE PRESERVATION COUNT.

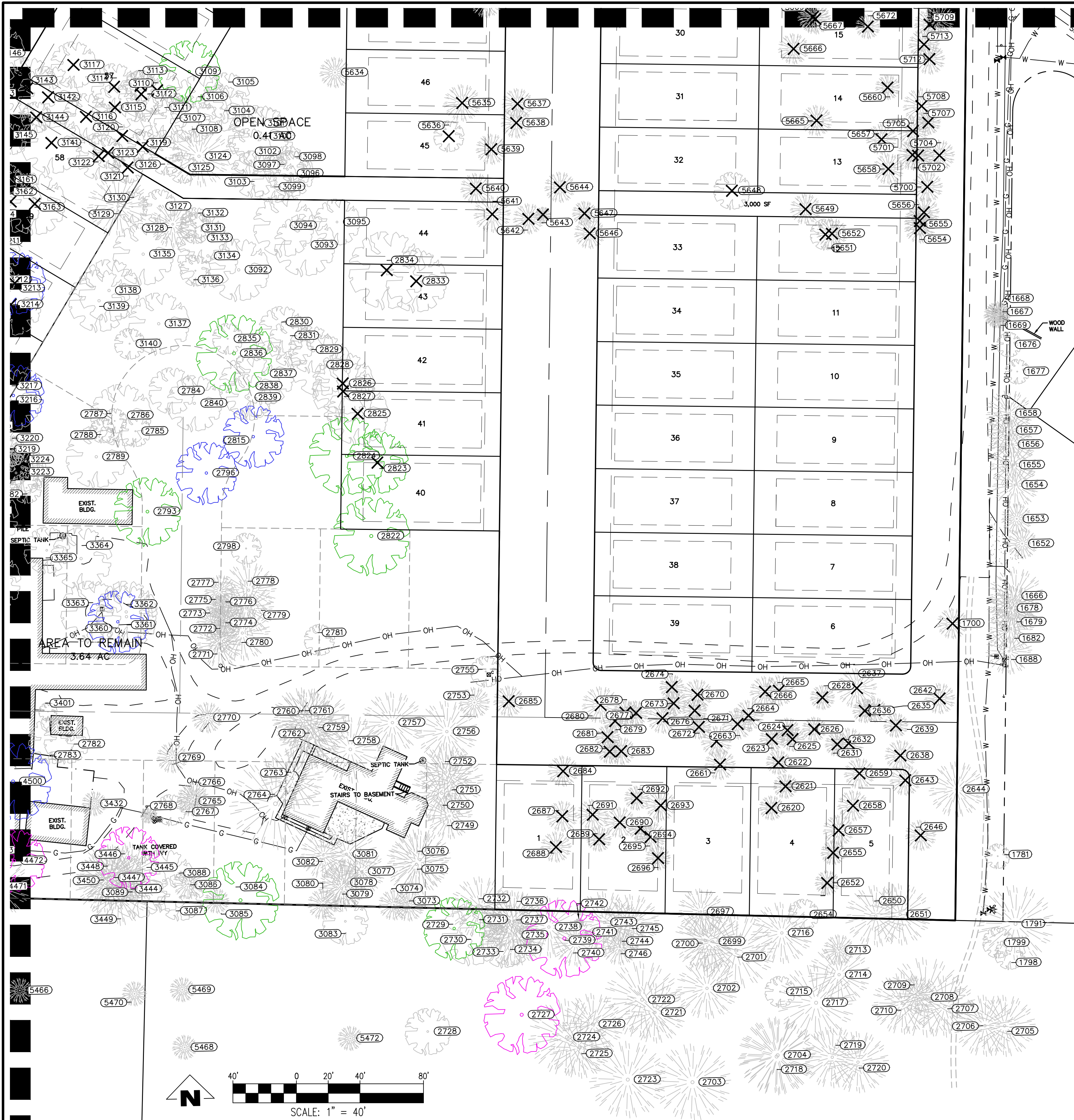
4540 PRINGLE RD SE
TAX MAP - 3000 & 3002
TAX MAP - 083W11BC
SW1/4 NW1/4 SEC11 T8S R3W W.M.
SALEM, OREGON

TREE PRESERVATION AND
REMOVAL PLAN -
NORTHEAST

NO.	DATE	DESCRIPTION

EMERIO
ENGINEERING • SURVEYING • DESIGN
2687 WILLAMETTE ROAD, SUITE 1A
EUGENE, OREGON 97402-2901
TEL: (503) 746-3812
FAX: (503) 639-9592
www.emeriodesign.com





- TREE PROTECTION SPECIFICATIONS**
- PRECONSTRUCTION CONFERENCE: PRIOR TO THE START OF CONSTRUCTION ACTIVITY, THE CONTRACTOR SHALL COORDINATE WITH THE PROJECT ARBORIST IN A TIMELY MANNER TO REVIEW THE TREE PROTECTION PLAN. TREES TO BE RETAINED ARE IDENTIFIED WITH NUMBERED TAGS ON THE GROUND, AND TO INSPECT AND VERIFY THE INSTALLATION OF TREE PROTECTION MEASURES.
 - FENCING: TREES TO REMAIN ON SITE SHALL BE PROTECTED BY INSTALLATION OF TREE PROTECTION FENCING AS DEPICTED ON SITE PLANS IN ORDER TO PREVENT INJURY TO TREE TRUNKS OR ROOTS, OR SOIL COMPACTION WITHIN THE ROOT PROTECTION AREA. FENCES SHALL BE A MINIMUM 6-FOOT HIGH 2-INCH CHAIN LINK MESH SECURED TO METAL POSTS DRIVEN INTO THE GROUND. THE CONTRACTOR IS RESPONSIBLE FOR COORDINATING WITH THE PROJECT ARBORIST PRIOR TO OPENING, ADJUSTING OR REMOVING TREE PROTECTION FENCING.
 - TREE PROTECTION ZONE: WITHOUT AUTHORIZATION

- FROM THE PROJECT ARBORIST, NONE OF THE FOLLOWING SHALL OCCUR BENEATH THE DRIPLINE OF ANY PROTECTED TREE:
- GRADE CHANGE OR CUT AND FILL;
 - NEW IMPERVIOUS SURFACES;
 - UTILITY OR DRAINAGE FIELD PLACEMENT;
 - STAGING OR STORAGE OF MATERIALS AND EQUIPMENT; OR
 - VEHICLE MANEUVERING.
- THE CONTRACTOR SHALL BE RESPONSIBLE FOR CONTACTING THE PROJECT ARBORIST IN A TIMELY MANNER PRIOR TO WORKING BENEATH PROTECTED TREE DRIPLINES. ROOT PROTECTION ZONES MAY BE ENTERED FOR TASKS LIKE SURVEYING, MEASURING AND SAMPLING. FENCES MUST BE CLOSED UPON COMPLETION OF THESE TASKS.
- TREE AND STUMP REMOVAL: TREES TO BE REMOVED SHALL BE CLEARLY IDENTIFIED WITH TREE-MARKING

- PAINT OR OTHER METHODS APPROVED IN ADVANCE BY THE PROJECT ARBORIST. PROTECTION FENCING MAY BE TEMPORARILY OPENED IN TRACT 8 FOR REMOVAL OF TREES #6654 AND #6655, IN THE REAR OF LOT 3 FOR REMOVAL OF TREE #6248 AND #6375, IN THE REAR OF LOT 9 FOR REMOVAL OF TREE #50316 AND IN THE REAR OF LOT 10 FOR REMOVAL OF TREES #50398 AND #50399. WITHIN TREE PROTECTION ZONES, TREE REMOVAL SHALL BE PERFORMED WITH HAND TOOLS ONLY AND TREES SHALL BE DIRECTIONALLY FELLEED OR SURGICALLY REMOVED TO AVOID DAMAGE TO REMAINING NEARBY TREES. THE STUMPS OF THESE PARTICULAR TREES SHALL REMAIN IN THE GROUND, BE REMOVED APPROXIMATELY 6-INCHES BELOW THE GROUND SURFACE USING A STUMP GRINDER, OR ELSE EXTRACTED FROM THE GROUND UNDER ARBORIST SUPERVISION.
- PRUNING: PRUNING MAY BE NEEDED TO PROVIDE OVERHEAD CLEARANCE AND TO REMOVE DEAD AND DEFECTIVE BRANCHES FOR SAFETY. THE PROJECT ARBORIST CAN HELP IDENTIFY WHERE PRUNING IS NECESSARY ONCE TREES RECOMMENDED FOR

- REMOVAL HAVE BEEN REMOVED AND THE SITE IS PREPARED FOR CONSTRUCTION. TREE REMOVAL AND PRUNING SHALL BE PERFORMED BY A QUALIFIED TREE SERVICE.
- EXCAVATION AND ROOT PRUNING: EXCAVATION BENEATH PROTECTED TREE DRIPLINES SHALL BE AVOIDED IF ALTERNATIVES ARE AVAILABLE. IF EXCAVATION IS UNAVOIDABLE, THE PROJECT ARBORIST SHALL EVALUATE THE PROPOSED EXCAVATION TO DETERMINE METHODS TO MINIMIZE IMPACTS TO TREES. ROOT PRUNING SHALL BE DIRECTED AND DOCUMENTED BY THE PROJECT ARBORIST.
 - LANDSCAPING: FOLLOWING CONSTRUCTION AND WHERE LANDSCAPING IS DESIRED, APPLY APPROXIMATELY 3-INCHES OF MULCH BENEATH THE DRIPLINE OF PROTECTED TREES IN A MINIMUM 5-FOOT RADIUS AROUND TREE TRUNKS; DO NOT PILE MULCH DIRECTLY AGAINST TREE TRUNKS. SHRUBS AND GROUND COVER PLANTS MAY BE PLANTED WITHIN THE GRASS-FREE MULCH RINGS. IF IRRIGATION IS USED, USE DRIP IRRIGATION OR LOW FLOW EMITTERS INSTALLED AT NATIVE GRADE (NO

- TRENCHING) ONLY BENEATH THE DRIPLINES OF PROTECTED TREES. LANDSCAPING SHALL BE PERFORMED BY HAND AND WITH HAND TOOLS ONLY BENEATH PROTECTED TREE DRIPLINES; ADJUST THE LOCATION OF PLANTS TO AVOID TREE ROOT IMPACTS.
- QUALITY ASSURANCE: A QUALIFIED ARBORIST SHOULD SUPERVISE PROPER EXECUTION OF THIS PLAN ON-CALL DURING CONSTRUCTION ACTIVITIES THAT COULD ENCOACH ON RETAINED TREES. TREE PROTECTION SITE INSPECTION MONITORING REPORTS SHOULD BE PROVIDED TO THE CLIENT AND CITY FOLLOWING EACH SITE VISIT PERFORMED DURING CONSTRUCTION.
 - REASSESSMENT: TREES THAT ARE RETAINED WITH SITE IMPROVEMENT WORK SHOULD BE REASSESSED IN TERMS OF FUTURE HOME PLANS. ADDITIONAL TREE REMOVAL OR ALTERNATIVE TREE PROTECTION MEASURES MAY BE NEEDED.

CONDITION

GOOD	FAIR	POOR	VERY POOR
------	------	------	-----------

TREE #	SPECIES	DBH*	REMOVE
1652	FIR	16	
1653	FIR	18	
1654	FIR	18	
1655	FIR	16	
1656	FIR	16	
1657	FIR	14	
1658	FIR	22	
1666	FIR	20	
1669	CEDAR	10	
1678	FIR	12	
1679	FIR	14	
1682	FIR	16	
1688	FIR	18	
1700	PINE	12	REMOVE
1791	FIR	36	
2620	PINE	12	REMOVE
2621	PINE	12	REMOVE
2622	PINE	10	REMOVE
2623	PINE	12	REMOVE
2624	PINE	10	REMOVE
2625	PINE	10	REMOVE
2626	PINE	12	REMOVE
2628	PINE	16	REMOVE
2631	PINE	12	REMOVE
2632	PINE	13	REMOVE
2635	PINE	12	REMOVE
2636	PINE	12	REMOVE
2637	PINE	16	REMOVE
2638	PINE	16	REMOVE
2639	PINE	10	REMOVE
2642	PINE	12	REMOVE
2643	PINE	14	REMOVE
2644	FIR	32	
2646	PINE	18	REMOVE
2650	FIR	28	
2651	FIR	28	
2652	PINE	12	REMOVE
2654	OAK (x2)	15	
2655	PINE	11	REMOVE
2657	PINE	18	REMOVE
2658	PINE	12	REMOVE
2659	PINE	12	REMOVE
2661	PINE	12	REMOVE
2663	PINE	12	REMOVE
2664	PINE	12	REMOVE
2665	PINE	13	REMOVE
2666	PINE	13	REMOVE
2670	PINE	18	REMOVE
2671	PINE	10	REMOVE
2672	PINE	10	REMOVE
2673	PINE	10	REMOVE
2674	PINE	16	REMOVE
2676	PINE	14	REMOVE
2677	PINE	11	REMOVE
2678	PINE	12	REMOVE
2679	PINE	10	REMOVE
2680	PINE	18	REMOVE
2681	PINE	10	REMOVE
2682	PINE	12	REMOVE
2683	PINE	14	REMOVE
2684	PINE	16	REMOVE
2685	PINE	18	REMOVE
2687	PINE	14	REMOVE
2688	PINE	18	REMOVE
2689	PINE	12	REMOVE
2690	PINE	16	REMOVE
2691	PINE	12	REMOVE
2692	PINE	10	REMOVE
2693	PINE	14	REMOVE
2694	PINE	10	REMOVE
2695	PINE	16	REMOVE
2696	PINE	10	REMOVE
2697	FIR	18	REMOVE

TREE #	SPECIES	DBH*	REMOVE
2699	FIR	22	
2700	FIR	34	
2701	FIR	48	
2702	FIR	28	
2703	FIR	24	
2704	FIR	42	
2705	FIR	28	
2706	FIR	28	
2707	FIR	26	
2708	FIR	40	
2709	FIR	14	
2710	FIR	32	
2713	FIR	12	
2714	FIR	28	
2716	FIR	28	
2717	FIR	32	
2718	FIR	40	
2719	FIR	28	
2720	FIR	28	
2721	FIR	32	
2722	FIR	44	
2723	FIR	40	
2724	FIR	48	
2725	FIR	22	
2726	FIR	24	
2727	OAK	38	
2728	OAK	16	
2729	OAK	24	
2730	OAK	18	
2731	OAK	12	
2732	FIR	30	
2733	OAK	14	
2734	OAK	14	
2735	FIR	30	
2736	FIR	18	
2737	FIR	14	
2738	FIR	30	
2739	OAK	24	
2740	FIR	22	
2741	FIR	12	
2742	FIR	12	
2743	FIR	28	
2744	FIR	24	
2745	FIR	23	
2746	FIR	14	
2749	FIR	18	
2750	FIR	30	
2751	FIR	32	
2752	FIR	24	
2753	PINE	14	
2755	DECD	10	
2756	FIR	40	
2757	FIR	32	
2758	FIR	32	
2759	FIR	32	
2760	FIR	30	
2761	FIR	16	
2762	FIR	22	
2763	FIR	36	
2764	FIR	52	
2765	PINE	12	
2769	FIR	22	
2770	PINE	16	
2771	FIR	16	
2772	FIR	14	
2773	FIR	16	
2774	FIR	10	
2776	FIR	12	
2777	FIR	12	
2778	FIR	26	
2779	FIR	26	
2780	FIR	30	
2781	BIRCH	12	
2782	OAK	14	
2783	OAK (x3)	14	
2784	OAK	18	
2785	OAK	10	
2786	OAK	18	
2787	OAK	10	
2788	OAK	10	
2789	OAK	18	
2793	OAK	24	
2796	OAK	24	
2798	DECD	14	
2815	OAK	26	
2822	OAK	44	
2823	OAK	24	REMOVE
2824	OAK	26	
2825	OAK	20	REMOVE
2826	OAK (x3)	16	REMOVE
2827	OAK (x2)	14	REMOVE
2828	OAK	20	
2829	OAK	18	
2830	OAK	18	
2831	OAK	18	

TREE #	SPECIES	DBH*	REMOVE
2833	OAK (x2)	16	REMOVE
2834	OAK	22	REMOVE
2835	OAK	10	
2836	OAK	30	
2837	OAK	18	
2838	OAK (x3)	18	
2839	OAK (x2)	12	
2840	OAK	20	
3073	FIR	14	
3074	FIR	14	
3075	FIR	36	
3076	FIR	26	
3077	FIR	24	
3078	FIR	24	
3079	FIR	24	
3080	FIR	15	
3081	FIR	26	
3082	FIR	22	
3083	WALNUT	10	
3084	OAK	28	
3086	FIR	10	
3087	OAK	17	
3088	OAK	22	
3089	OAK (x2)	16	
3092	OAK (x2)	18	
3093	OAK	22	
3094	OAK	20	
3095	OAK (x3)	14	
3096	OAK	14	
3097	OAK	10	
3098	OAK	10	
3099	OAK (x2)	12	
3100	OAK	20	
3101	OAK	12	
3102	OAK (x2)	16	
3103	OAK (x2)	12	
3104	OAK	12	
3105	OAK	16	
3106	OAK (x2)	18	
3107	OAK	12	
3108	OAK	12	
3109	OAK	28	
3110	OAK (x2)	14	REMOVE
3111	OAK	14	
3112	OAK	10	REMOVE
3113	OAK	10	REMOVE
3114	OAK	14	REMOVE
3115	OAK	16	REMOVE
3116	OAK (x2)	16	REMOVE
3117	OAK	16	REMOVE
3119	OAK	12	REMOVE
3120	OAK	18	REMOVE
3121	OAK	12	REMOVE
3122	OAK	14	REMOVE
3123	OAK	10	REMOVE
3124	FIR	30	
3125	OAK	14	
3126	OAK	12	
3127	OAK	12	
3128	FIR	20	
3129	FIR	36	
3130	OAK	12	
3131	OAK	12	
3132	OAK	12	
3133	OAK	18	
3134	OAK (x2)	22	
3135	OAK	22	
3136	OAK	14	
3137	OAK	22	
3138	OAK (x2)	20	
3139	OAK	18	
3140	OAK	14	
3141	OAK	22	REMOVE
3142	OAK	20	REMOVE
3143	OAK	20	REMOVE
3144	OAK	10	REMOVE
3145	OAK	12	REMOVE
3222	OAK	12	
3223	OAK	14	
3224	OAK	16	
3225	OAK	24	
3226	OAK	22	
3227	OAK	18	
3228	OAK (x2)	18	
3229	OAK (x2)	18	
3230	OAK	12	
3444	FIR	16	
3445	FIR	24	
3446	OAK	24	
3447	FIR	24	
3448	FIR	20	
3449	FIR	22	
3450	FIR	36	
5634	FIR	16	
5635	FIR	14	REMOVE

TREE #	SPECIES	DBH*	REMOVE
5636	MADRONA	10	REMOVE
5637	FIR (x2)	14	REMOVE
5638	FIR	16	REMOVE
5639	FIR	14	REMOVE
5640	FIR (x2)	16	REMOVE
5641	FIR	26	REMOVE
5642	FIR	18	REMOVE
5643	FIR	16	REMOVE
5644	FIR	16	REMOVE
5646	FIR	14	REMOVE
5647	FIR	16	REMOVE
5648	CTNWD	18	REMOVE
5649	PINE	10	REMOVE
5651	MADRONA	12	REMOVE
5652	PINE	14	REMOVE
5654	PINE	12	REMOVE
5655	PINE	10	REMOVE
5656	PINE	10	REMOVE
5657	PINE	12	REMOVE
5658	PINE	12	REMOVE
5660	PINE	10	REMOVE
5665	PINE	10	REMOVE
5666	PINE	10	REMOVE
5667	PINE	12	REMOVE
5669	FIR	12	REMOVE
5700	PINE	12	REMOVE
5701	FIR	14	REMOVE
5702	PINE	10	REMOVE
5704	PINE	10	REMOVE
5705	PINE	10	REMOVE
5707	PINE	10	REMOVE
5708	PINE	16	REMOVE
5709	FIR	10	REMOVE
5712	PINE	12	REMOVE
5713	PINE	12	REMOVE

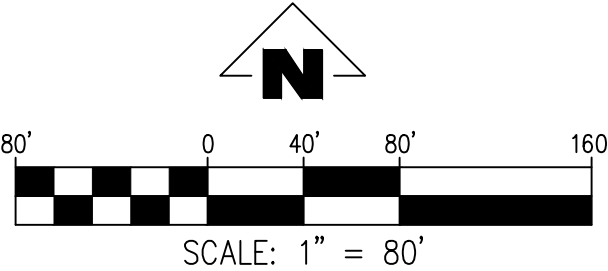
DBH* DIAMETER AT BREAST HEIGHT, INCHES.
INDICATES OFFSITE TREE, OR TREE NOT LOCATED WITHIN PROJECT AREA, NOT INCLUDED IN TREE PRESERVATION COUNT.

4540 PRINGLE RD SE
TAX MAP - 3000 & 3002
TAX MAP - 083W11BC
SW1/4 NW1/4 SEC11 T8S R3W W.M.
SALEM, OREGON

TREE PRESERVATION AND
REMOVAL PLAN -
SOUTHEAST

REVISIONS
NO. DATE DESCRIPTION

EMERIO



TREE #	SPECIES	DBH*	REMOVE
2576	OAK	18	REMOVE
2577	OAK	20	REMOVE
2578	OAK	20	REMOVE
2579	OAK	32	REMOVE
2584	PINE	14	REMOVE
2588	PINE	12	REMOVE
2644	FIR	32	REMOVE

DBH* DIAMETER AT BREAST HEIGHT, INCHES.
NOTE: CITY TREES ARE DESIGNATED AS THOSE THAT ARE LOCATED WITHIN THE CURRENT CITY OF SALEM RIGHT OF WAY.

TREE PRESERVATION AND
REMOVAL PLAN - CITY
TREES

4540 PRINGLE RD SE
TAX MAP - 3000 & 3002
TAX MAP - 083W11BC
SW1/4 NW1/4 SEC11 T8S R3W W.M.
SALEM, OREGON

REVISIONS	
NO.	DESCRIPTION



EMERIO
ENGINEERING • SURVEYING • DESIGN

2687 WILLAMETTE ROAD, SUITE 1A
EUGENE, OREGON 97401
TEL: (503) 748-8812
FAX: (503) 698-6592
www.emeriodesign.com





MEMORANDUM

DATE: August 31, 2021

TO: Roy Hankins (Emerio)

FROM: Todd Prager, RCA #597, ISA Board Certified Master Arborist

RE: Tree Assessment at Meyer Farm

Summary

This report includes a summary of trees that have fallen, died, or been removed since the initial survey for the Meyer Farm site.

Background

Emerio is designing the proposed Meyer Farm subdivision at 4540 Pringle Road SE in Salem, Oregon. The survey of existing trees at the site occurred in 2019, and many trees in Salem have been lost since that time due in part to a catastrophic ice storm in February 2021.

My assignment for this project was to visit the site, assess trees shown as 10-inch DBH or greater in Attachment 1, and provide a list of the fallen, dead, and removed trees.

Tree Assessment

On August 26, 2021, I visited the Meyer Farm Subdivision site to identify trees that have fallen, died, or been removed since the initial survey. During my site visit I assessed 63 trees that had significant health or structural issues. The inventory of these trees is provided in Attachment 1 and includes the tree number, species (common and scientific names), comments, and notations of fallen, dead, or removed trees. Attachment 2 is the tree plan with the highlighted locations of the 63 trees. Table 1 is a summary of assessment.

Table 1: Summary of Fallen, Dead, and Removed Trees

Tree Condition	Number of Trees
Fallen	6
Dead	24
Removed	4
<i>Total</i>	<i>34</i>

As shown in Table 1, a total of 34 trees are fallen, dead, or removed. The remaining 29 of 63 trees that I assessed had significant health and/or structural issues but were still standing and alive.

Conclusion

A total of 34 assessed trees are fallen, dead, or removed at the Meyer Farm site. The remaining 29 of 63 assessed trees had significant health and/or structural issues but were still standing and alive.

Please contact me if you have questions, concerns, or need any additional information.

Sincerely,



Todd Prager

ASCA Registered Consulting Arborist #597

ISA Board Certified Master Arborist, WE-6723B

ISA Qualified Tree Risk Assessor

AICP, American Planning Association

Enclosures: Attachment 1 – Inventory of Assessed Trees

Attachment 2 – Site Map with Assessed Trees Highlighted

Attachment 2

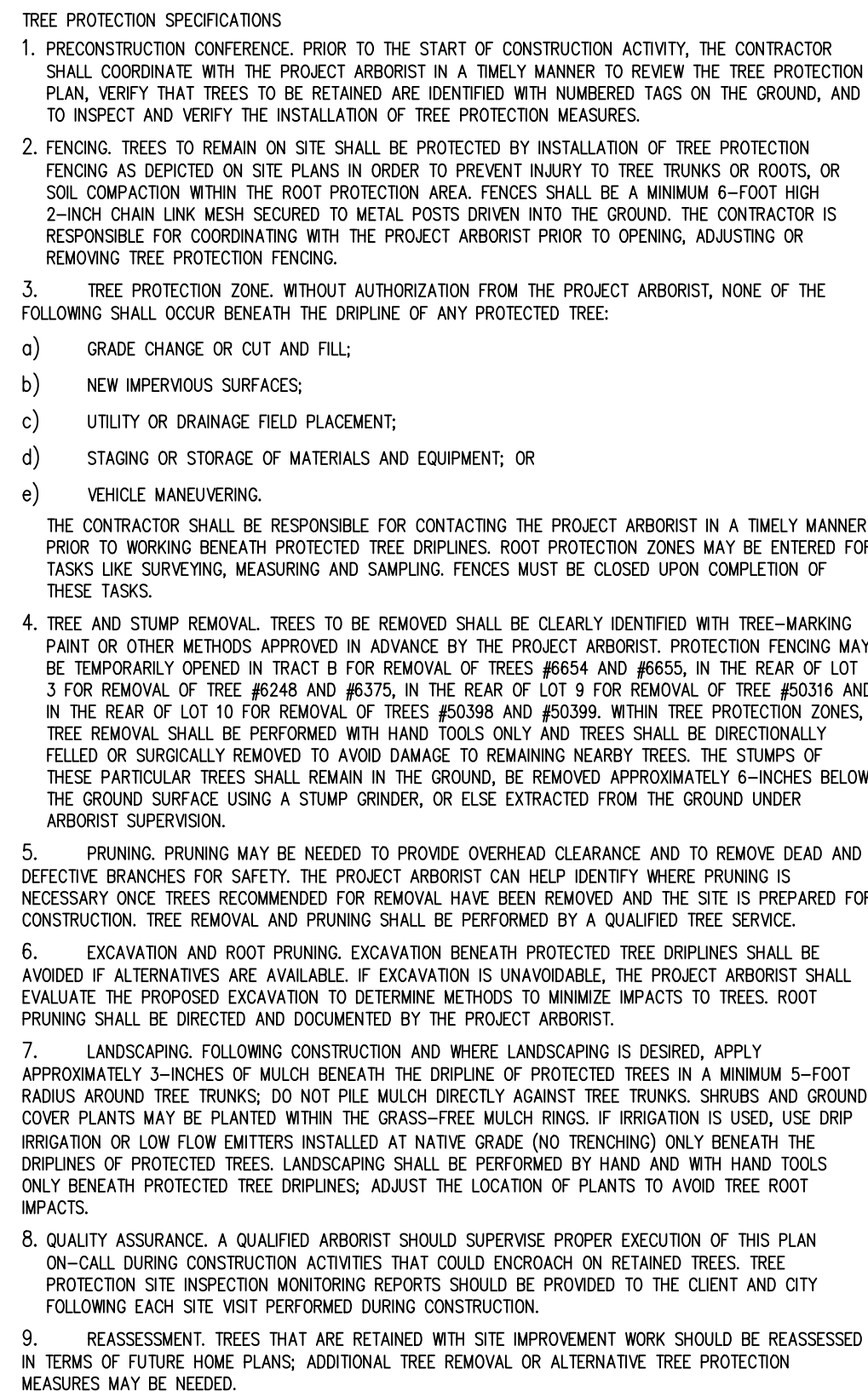
Tree No.	Common Name	Scientific Name	Comments	Removed	Fallen Over	Dead
1678	Douglas-fir	<i>Pseudotsuga menziesii</i>	topped for overhead high voltage lines with extensive decay at 15'			
1700	ponderosa pine	<i>Pinus ponderosa</i>	broken top at 30'			
1790	Douglas-fir	<i>Pseudotsuga menziesii</i>	dead, failed at 25'			x
2623	ponderosa pine	<i>Pinus ponderosa</i>	lost top at 30'			
2625	ponderosa pine	<i>Pinus ponderosa</i>	lost top at 20'			
2627	ponderosa pine	<i>Pinus ponderosa</i>	lost top at 20', dead			x
2629	ponderosa pine	<i>Pinus ponderosa</i>	lost top at 15', dead			x
2635	ponderosa pine	<i>Pinus ponderosa</i>	lost top at 20'			
2636	ponderosa pine	<i>Pinus ponderosa</i>	lost top at 20'			
2640	ponderosa pine	<i>Pinus ponderosa</i>	lost top at 20', dead			x
2641	ponderosa pine	<i>Pinus ponderosa</i>	lost top at 20', dead			x
2642	ponderosa pine	<i>Pinus ponderosa</i>	lost top at 20'			
2647	ponderosa pine	<i>Pinus ponderosa</i>	dead, lost top at 30'			x
2648	ponderosa pine	<i>Pinus ponderosa</i>	dead, lost top at 30'			x
2649	ponderosa pine	<i>Pinus ponderosa</i>	dead, lost top at 25'			x
2659	ponderosa pine	<i>Pinus ponderosa</i>	lost top at 40'			
2660	ponderosa pine	<i>Pinus ponderosa</i>	dead, fallen over		x	
2661	ponderosa pine	<i>Pinus ponderosa</i>	lost top at 20'			
2662	ponderosa pine	<i>Pinus ponderosa</i>	stump	x		
2663	ponderosa pine	<i>Pinus ponderosa</i>	lost top at 25'			
2664	ponderosa pine	<i>Pinus ponderosa</i>	lost top at 25'			
2666	ponderosa pine	<i>Pinus ponderosa</i>	lost top at 30'			
2692	ponderosa pine	<i>Pinus ponderosa</i>	lost top at 25'			
2696	ponderosa pine	<i>Pinus ponderosa</i>	lost top at 25'			
2727	Oregon white oak	<i>Quercus garryana</i>	large scaffold and codominant branch failures, moderately thin crown			

Attachment 2

Tree No.	Common Name	Scientific Name	Comments	Removed	Fallen Over	Dead
2739	Oregon white oak	<i>Quercus garryana</i>	overtopped by adjacent trees, suppressed, significant branch dieback and failures			
2832	Oregon white oak	<i>Quercus garryana</i>	dead, fallen over		x	
3157	Oregon white oak	<i>Quercus garryana</i>	top failed			
3181	Oregon white oak	<i>Quercus garryana</i>	extensive branch failures			
3242	Oregon white oak	<i>Quercus garryana</i>	extensive branch failures			
3446	Oregon white oak	<i>Quercus garryana</i>	one sided, significant lean, thin crown, large branch failures			
4463	grand fir	<i>Abies grandis</i>	dead			x
4464	grand fir	<i>Abies grandis</i>	dead, stump	x		
4465	grand fir	<i>Abies grandis</i>	dead, stump	x		
4466	grand fir	<i>Abies grandis</i>	dead, stump	x		
4472	Oregon white oak	<i>Quercus garryana</i>	thin crown with significant branch dieback and failures			
4473	Oregon white oak	<i>Quercus garryana</i>	significant decay at lower trunk with fungal fruiting bodies			
4591	black walnut	<i>Juglans nigra</i>	extensive dieback			
4595	grand fir	<i>Abies grandis</i>	top failed at 15' above ground with significant decay			
4760	Oregon white oak	<i>Quercus garryana</i>	fallen over		x	
4762	Oregon white oak	<i>Quercus garryana</i>	fallen over		x	
4765	deciduous		species unknown, dead, smothered by ivy			x
4778	Oregon white oak	<i>Quercus garryana</i>	significant branch failures, significant ivy growth			
4782	red alder	<i>Alnus rubra</i>	dead, fallen over, covered with ivy		x	
4783	Douglas-fir	<i>Pseudotsuga menziesii</i>	dead, smothered by ivy			x

Attachment 2

Tree No.	Common Name	Scientific Name	Comments	Removed	Fallen Over	Dead
4784	Douglas-fir	<i>Pseudotsuga menziesii</i>	dead, smothered by ivy			x
4785	Douglas-fir	<i>Pseudotsuga menziesii</i>	dead, smothered by ivy			x
4813	Douglas-fir	<i>Pseudotsuga menziesii</i>	dead			x
4922	Oregon white oak	<i>Quercus garryana</i>	dead			x
4942	Douglas-fir	<i>Pseudotsuga menziesii</i>	dead			x
4946	Douglas-fir	<i>Pseudotsuga menziesii</i>	dead			x
4958	Oregon white oak	<i>Quercus garryana</i>	smothered by ivy			
5028	grand fir	<i>Abies grandis</i>	dead			x
5029	grand fir	<i>Abies grandis</i>	dead			x
5626	grand fir	<i>Abies grandis</i>	dead top			
5645	grand fir	<i>Abies grandis</i>	dead			x
5655	Scots pine	<i>Pinus sylvestris</i>	significant crown thinning			
5678	grand fir	<i>Abies grandis</i>	dead			x
5679	Scots pine	<i>Pinus sylvestris</i>	dead			x
5686	Douglas-fir	<i>Pseudotsuga menziesii</i>	dead top			
5751	Scots pine	<i>Pinus sylvestris</i>	dead, failed at 8'		x	
5791	Douglas-fir	<i>Pseudotsuga menziesii</i>	dead			x
5793	Scots pine	<i>Pinus sylvestris</i>	dead			x



TREE PRESERVATION	
PROPOSED PLAN	NUMBER OF TREES
ONSITE TREES REMOVED	469
ONSITE SIGNIFICANT TREES REMOVED	5
TOTAL TREES REMOVED	474
ONSITE TREES PRESERVED	205
TOTAL ONSITE TREES (INCLUDING SIGNIFICANT)	679
PERCENTAGE OF TREES PRESERVED	30.19%

REVISIONS		
NO.	DATE	DESCRIPTION

EMERIO
ENGINEERING • SURVEYING • DESIGN

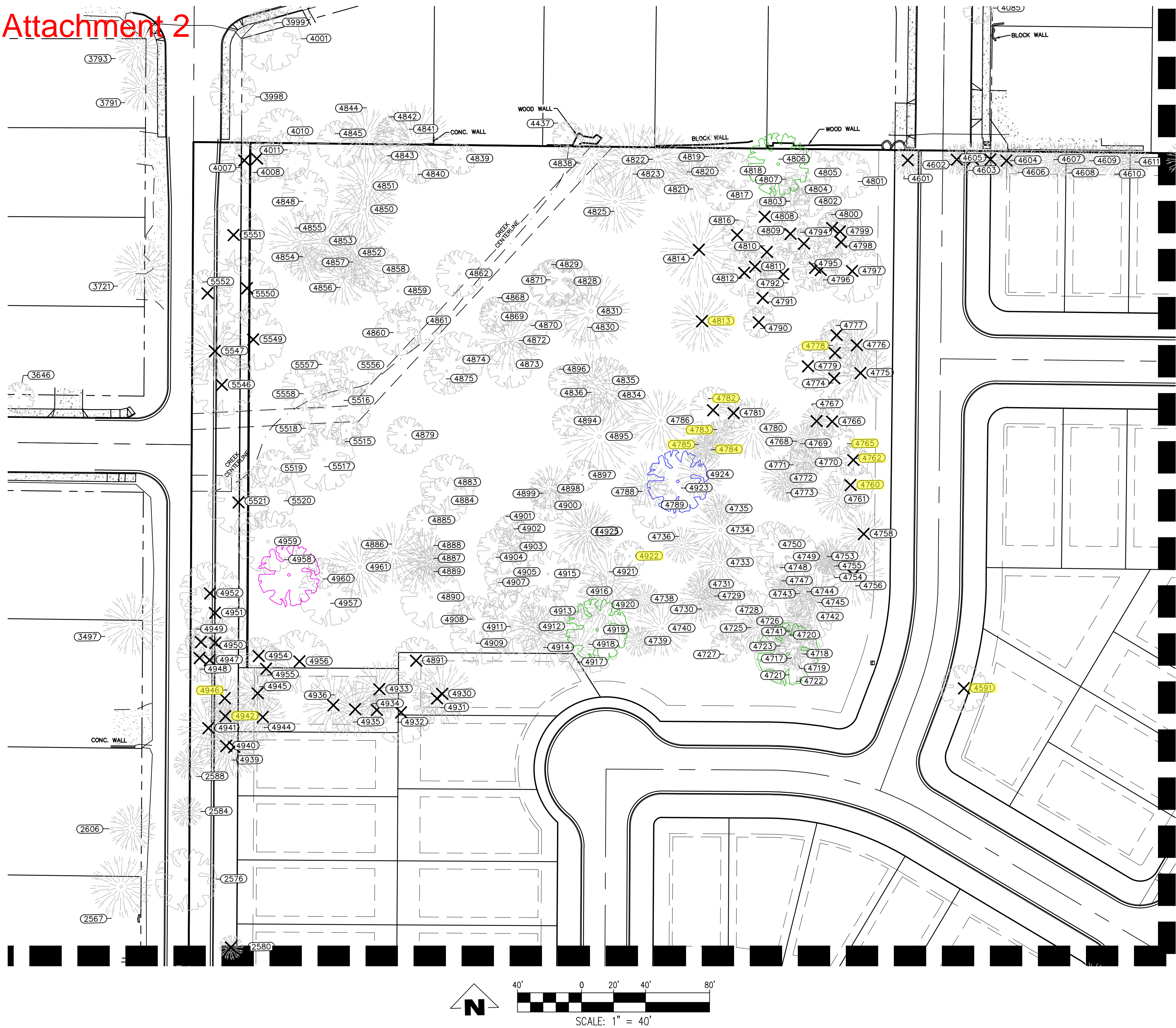
2867 WILLAMETTE ROAD, SUITE 1A
EUGENE, OREGON 97401
TEL: (503) 746-4812
FAX: (503) 639-9592
www.emeriodesign.com



REGISTERED PROFESSIONAL
ENGINEER
PRELIMINARY
NOT FOR
CONSTRUCTION
FOR THE
CITY OF
HANKINS
EXP. 6/30/2023

SHEET
P3.0
OF
32

Attachment 2



TREE PROTECTION SPECIFICATIONS

- PRECONSTRUCTION CONFERENCE. PRIOR TO THE START OF CONSTRUCTION ACTIVITY, THE CONTRACTOR SHALL COORDINATE WITH THE PROJECT ARBORIST IN A TIMELY MANNER TO REVIEW THE TREE PROTECTION PLAN, VERIFY THAT TREES TO BE RETAINED ARE IDENTIFIED WITH NUMBERED TAGS ON THE GROUND, AND TO INSPECT AND VERIFY THE INSTALLATION OF TREE PROTECTION MEASURES.
- FENCING. TREES TO REMAIN ON SITE SHALL BE PROTECTED BY INSTALLATION OF TREE PROTECTION FENCING AS DEPICTED ON SITE PLANS IN ORDER TO PREVENT INJURY TO TREE TRUNKS OR ROOTS, OR SOIL COMPACTION WITHIN THE ROOT PROTECTION AREA. FENCES SHALL BE A MINIMUM 6-FOOT HIGH 2-INCH CHAIN LINK MESH SECURED TO METAL POSTS DRIVEN INTO THE GROUND. THE CONTRACTOR IS RESPONSIBLE FOR COORDINATING WITH THE PROJECT ARBORIST PRIOR TO OPENING, ADJUSTING OR REMOVING TREE PROTECTION FENCING.
- TREE PROTECTION ZONE. WITHOUT AUTHORIZATION FROM THE PROJECT ARBORIST, NONE OF THE FOLLOWING SHALL OCCUR BENEATH THE DRIPLINE OF ANY PROTECTED TREE:
 - GRADE CHANGE OR CUT AND FILL;
 - NEW IMPERVIOUS SURFACES;
 - UTILITY OR DRAINAGE FIELD PLACEMENT;
 - STAGING OR STORAGE OF MATERIALS AND EQUIPMENT; OR
 - VEHICLE MANEUVERING.
- TREE AND STUMP REMOVAL. TREES TO BE REMOVED SHALL BE CLEARLY IDENTIFIED WITH TREE-MARKING PAINT OR OTHER METHODS APPROVED IN ADVANCE BY THE PROJECT ARBORIST. PROTECTION FENCING MAY BE TEMPORARILY OPENED IN TRACT B FOR REMOVAL OF TREES #6654 AND #6655, IN THE REAR OF LOT 3 FOR REMOVAL OF TREE #6248 AND #6375, IN THE REAR OF LOT 9 FOR REMOVAL OF TREE #6316 AND IN THE REAR OF LOT 10 FOR REMOVAL OF TREES #6389 AND #6390. WITHIN TREE PROTECTION ZONES, TREE REMOVAL SHALL BE PERFORMED WITH HAND TOOLS ONLY AND TREES SHALL BE DIRECTIONALLY FELLED OR SURGICALLY REMOVED TO AVOID DAMAGE TO REMAINING NEARBY TREES. THE STUMPS OF THESE PARTICULAR TREES SHALL REMAIN IN THE GROUND, BE REMOVED APPROXIMATELY 6-INCHES BELOW THE GROUND SURFACE USING A STUMP GRINDER, OR ELSE EXTRACTED FROM THE GROUND UNDER ARBORIST SUPERVISION.

- PRUNING. PRUNING MAY BE NEEDED TO PROVIDE OVERHEAD CLEARANCE AND TO REMOVE DEAD AND DEFECTIVE BRANCHES FOR SAFETY. THE PROJECT ARBORIST CAN HELP IDENTIFY WHERE PRUNING IS NECESSARY ONCE TREES RECOMMENDED FOR REMOVAL HAVE BEEN REMOVED AND THE SITE IS PREPARED FOR CONSTRUCTION. TREE REMOVAL AND PRUNING SHALL BE PERFORMED BY A QUALIFIED TREE SERVICE.
- EXCAVATION AND ROOT PRUNING. EXCAVATION BENEATH PROTECTED TREE DRIPLINES SHALL BE AVOIDED IF ALTERNATIVES ARE AVAILABLE. IF EXCAVATION IS UNAVOIDABLE, THE PROJECT ARBORIST SHALL EVALUATE THE PROPOSED EXCAVATION TO DETERMINE METHODS TO MINIMIZE IMPACTS TO TREES. ROOT PRUNING SHALL BE DIRECTED AND DOCUMENTED BY THE PROJECT ARBORIST.
- LANDSCAPING. FOLLOWING CONSTRUCTION AND WHERE LANDSCAPING IS DESIRED, APPLY APPROXIMATELY 3-INCHES OF MULCH BENEATH THE DRIPLINE OF PROTECTED TREES IN A MINIMUM 5-FOOT RADIUS AROUND TREE TRUNKS; DO NOT PILE MULCH DIRECTLY AGAINST TREE TRUNKS. SHRUBS AND GROUND COVER PLANTS MAY BE PLANTED WITHIN THE GRASS-FREE MULCH RINGS. IF IRRIGATION IS USED, USE DRIP IRRIGATION OR LOW FLOW EMITTERS INSTALLED AT NATIVE GRADE (NO TRENCHING) ONLY BENEATH THE DRIPLINES OF PROTECTED TREES. LANDSCAPING SHALL BE PERFORMED BY HAND AND WITH HAND TOOLS ONLY BENEATH PROTECTED TREE DRIPLINES; ADJUST THE LOCATION OF PLANTS TO AVOID TREE ROOT IMPACTS.
- QUALITY ASSURANCE. A QUALIFIED ARBORIST SHOULD SUPERVISE PROPER EXECUTION OF THIS PLAN ON-CALL DURING CONSTRUCTION ACTIVITIES THAT COULD ENDOURAGE ON RETAINED TREES. TREE PROTECTION SITE INSPECTION MONITORING REPORTS SHOULD BE PROVIDED TO THE CLIENT AND CITY FOLLOWING EACH SITE VISIT PERFORMED DURING CONSTRUCTION.
- REASSESSMENT. TREES THAT ARE RETAINED WITH SITE IMPROVEMENT WORK SHOULD BE REASSESSSED IN TERMS OF FUTURE HOME PLANS; ADDITIONAL TREE REMOVAL OR ALTERNATIVE TREE PROTECTION MEASURES MAY BE NEEDED.

CONDITION

- GOOD
- FAIR
- POOR
- VERY POOR

TREE #	SPECIES	DBH*	REMOVE
2567	CEDAR	40	
2576	OAK	18	
2580	FIR	12	
2584	PINE	14	
2588	PINE	12	
2606	PINE	24	
3497	FIR	30	
3646	DECED	12	
3721	FIR	24	
3791	FIR	20	
3793	FIR	20	
3998	OAK	16	
4001	OAK	20	
4007	OAK	16	REMOVE
4008	OAK	10	REMOVE
4010	OAK	14	
4011	OAK	12	
4437	MAPLE	16	
4591	WALNUT	22	REMOVE
4601	FIR (x2)	12	REMOVE
4602	FIR	14	REMOVE
4603	FIR	22	REMOVE
4604	FIR	15	REMOVE
4605	FIR	15	REMOVE
4606	FIR	14	
4607	FIR	18	
4608	FIR	18	
4609	FIR	14	
4610	FIR	16	
4611	FIR	10	
4711	FIR	18	
4717	OAK	10	
4718	OAK	16	
4719	OAK	10	
4720	OAK	10	
4721	OAK	28	
4722	OAK	18	
4723	OAK	10	
4725	FIR	12	
4726	OAK	22	
4727	OAK	12	
4728	OAK (x2)	18	
4729	FIR	14	
4730	FIR	22	
4731	FIR	12	
4733	FIR	26	
4734	FIR	36	
4735	FIR	10	
4736	FIR	16	
4738	FIR	12	
4739	FIR	12	
4740	FIR	28	
4741	FIR	12	
4742	OAK (x3)	14	
4743	OAK	10	
4744	FIR	12	
4745	FIR	20	
4747	DECED	10	
4748	DECED (x2)	18	
4749	OAK	22	
4750	OAK	20	
4753	FIR	16	
4754	FIR	12	
4755	FIR	20	
4756	FIR	22	REMOVE
4758	FIR	24	REMOVE
4760	OAK (x2)	16	REMOVE
4761	FIR	26	
4762	OAK (x3)	12	REMOVE
4765	OAK (x2)	12	
4766	OAK (x2)	10	REMOVE
4767	FIR	16	REMOVE
4768	FIR	12	
4769	OAK	14	
4770	FIR	14	
4771	OAK	10	
4772	FIR	20	
4773	FIR	16	
4774	OAK	16	REMOVE
4775	FIR (x2)	18	REMOVE
4776	FIR	20	REMOVE
4777	OAK	14	REMOVE
4778	OAK (x2)	12	REMOVE
4779	OAK	12	REMOVE
4780	FIR	26	
4781	OAK	12	REMOVE

TREE #	SPECIES	DBH*	REMOVE
4782	ALDER	10	REMOVE
4783	FIR	12	
4784	FIR	12	
4785	FIR	12	
4786	FIR	20	
4788	FIR	14	
4789	ALDER	10	
4790	OAK	14	REMOVE
4791	OAK	16	REMOVE
4792	OAK (x2)	14	REMOVE
4794	OAK	14	REMOVE
4795	OAK	18	REMOVE
4796	OAK	12	REMOVE
4797	OAK	18	REMOVE
4798	OAK	16	REMOVE
4799	OAK (x3)	12	REMOVE
4800	OAK (x2)	10	REMOVE
4801	OAK	16	
4802	OAK	10	
4803	OAK	10	
4804	OAK	10	
4805	OAK	14	
4806	OAK	24	
4807	OAK	10	
4808	OAK	12	REMOVE
4809	OAK	14	REMOVE
4810	MAPLE (x3)	10	REMOVE
4811	OAK	10	REMOVE
4812	OAK	14	REMOVE
4813	FIR	24	REMOVE
4814	FIR	28	REMOVE
4816	OAK	10	REMOVE
4817	OAK	10	
4818	OAK	10	
4819	FIR	20	
4820	DECED	10	
4821	FIR	20	
4822	FIR	24	
4823	FIR (x2)	24	
4825	FIR	24	
4828	OAK	14	
4829	OAK (x2)	10	
4830	OAK	16	
4831	FIR	30	
4834	FIR	18	
4835	OAK	16	
4836	FIR	20	
4838	FIR	32	
4839	DECED	12	
4840	OAK	10	
4841	FIR	32	
4842	OAK	10	
4843	OAK	14	
4844	FIR	24	
4845	OAK	16	
4848	OAK	12	
4850	FIR	30	
4851	FIR	28	
4852	FIR	30	
4853	FIR	28	
4854	FIR	12	
4855	FIR	32	
4856	FIR	16	
4857	FIR	16	
4858	OAK	12	
4859	OAK (x2)	12	
4860	OAK	13	
4861	OAK	16	
4862	OAK (x2)	12	
4868	OAK	14	
4869	OAK	14	
4870	OAK	14	
4871	OAK (x2)	12	
4872	FIR	28	
4873	OAK	12	
4874	OAK (x3)	12	
4875	OAK	14	
4879	ALDER	10	
4883	ALDER	14	
4884	OAK	16	
4885	OAK	10	
4886	FIR	18	
4887	FIR	24	
4888	FIR	14	
4889	FIR	10	
4890	OAK	20	
4891	OAK (x2)	14	REMOVE
4894	OAK	10	
4895	FIR	30	
4896	OAK (x2)	10	
4897	OAK	12	

TREE #	SPECIES	DBH*	REMOVE
4898	FIR	14	
4899	OAK	14	
4900	OAK	12	
4901	OAK	10	
4902	OAK	12	
4903	OAK	10	
4904	OAK	14	
4905	OAK	16	
4907	OAK	12	
4908	OAK	16	
4909	OAK	18	
4911	OAK (x3)	16	
4912	FIR	10	
4913	OAK	16	
4914	FIR	36	
4915	OAK (x4)	12	
4916	OAK	22	
4917	FIR	18	
4918	OAK	12	
4919	OAK	28	
4920	FIR	24	
4921	FIR	24	
4922	OAK	16	
4923	OAK	28	
4924	FIR	25	
4925	FIR	18	
4926	FIR	24	
4930	FIR	26	REMOVE
4931	OAK	12	REMOVE
4932	OAK (x2)	18	REMOVE
4933	FIR	16	REMOVE
4934	OAK	10	REMOVE
4935	FIR	16	REMOVE
4936	FIR	28	REMOVE
4939	FIR	22	REMOVE
4940	FIR	18	REMOVE
4941	FIR	18	REMOVE
4942	FIR	12	REMOVE
4944	FIR	22	REMOVE
4945	FIR	18	REMOVE
4946	FIR	12	REMOVE
4947	OAK	12	REMOVE
4948	OAK	16	REMOVE
4949	OAK	12	REMOVE
4950	OAK (x2)	14	REMOVE
4951	OAK	22	REMOVE
4952	OAK	18	REMOVE
4954	OAK	14	REMOVE
4955	OAK	12	REMOVE
4956	OAK	18	REMOVE
4957	OAK (x2)	18	
4958	OAK	24	
4959	OAK	16	
4960	OAK	12	
4961	FIR	28	
5515	ALDER	20	
5516	CTNWD	12	
5517	OAK	22	
5518	OAK	12	
5519	OAK	14	
5520	OAK	19	
5521	OAK	16	REMOVE
5546	OAK	22	REMOVE
5547	FIR	30	REMOVE
5549	OAK (x2)	16	REMOVE
5550	OAK	16	REMOVE
5551	OAK	16	REMOVE
5552	OAK	14	REMOVE
5556	OAK	14	
5557	OAK (x3)	12	
5558	OAK	14	

DBH* DIAMETER AT BREAST HEIGHT, INCHES.
INDICATES OFFSITE TREE, OR TREE NOT LOCATED WITHIN PROJECT AREA. NOT INCLUDED IN TREE PRESERVATION COUNT.

4540 PRINGLE RD SE
TAX MAP - 3000 & 3002
TAX MAP - 083W11BC
SW1/4 NW1/4 SEC11 T8S R3W W.M.
SALEM, OREGON

TREE PRESERVATION AND REMOVAL PLAN - NORTHWEST

REVISIONS

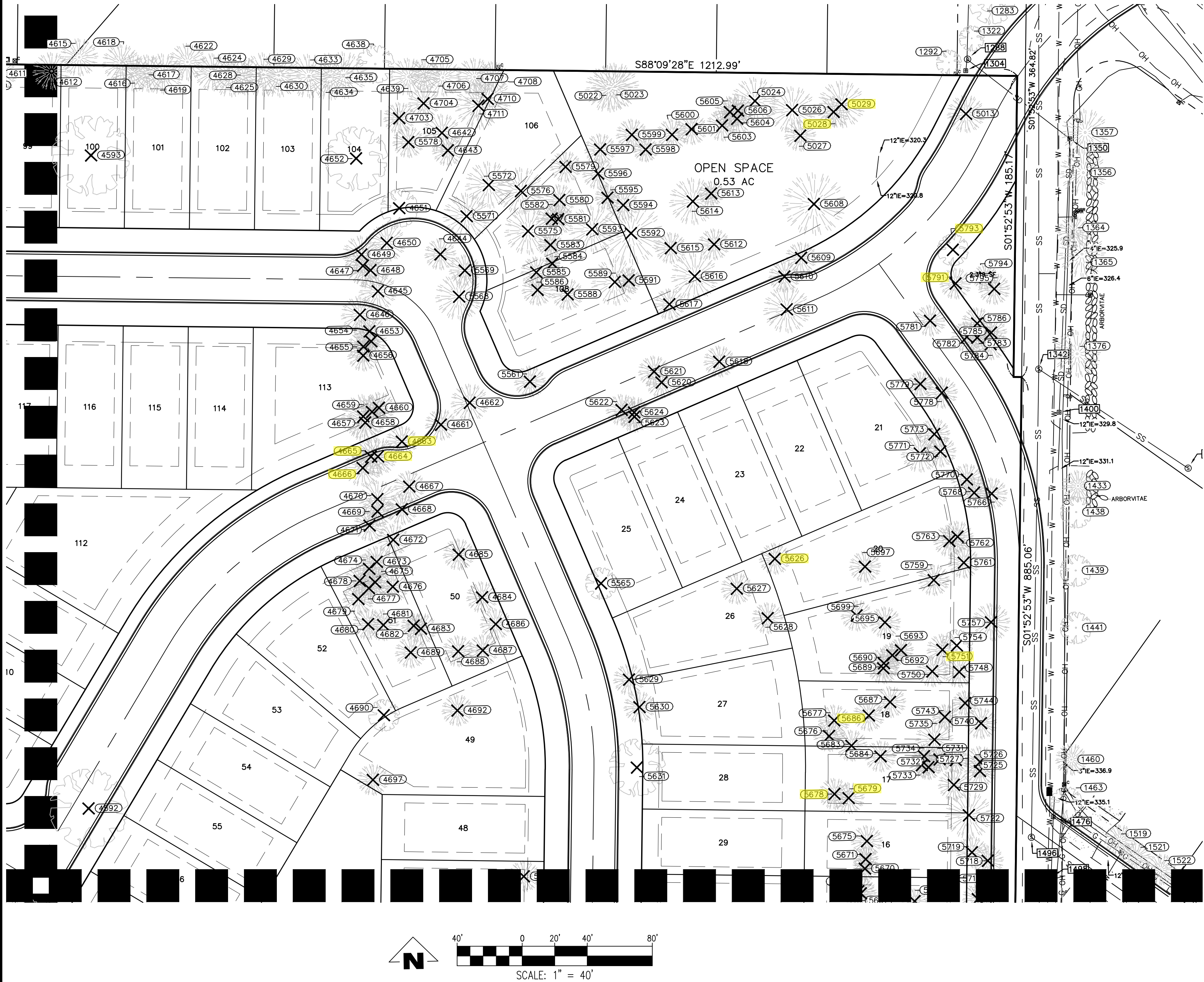
NO.	DATE	DESCRIPTION
-----	------	-------------

EMERIO
ENGINEERING • SURVEYING • DESIGN
2887 WILLAMETTE ROAD, SUITE 1A
EUGENE, OREGON 97401
TEL: (503) 746-8812
FAX: (503) 639-9592
www.emeriodesign.com

REGISTERED PROFESSIONAL
PRELIMINARY
NOT FOR CONSTRUCTION
ROY HOPKINS
EXPIRES: 6/30/2023

SHEET
P3.1
OF

Attachment 2



TREE PROTECTION SPECIFICATIONS

- PRECONSTRUCTION CONFERENCE. PRIOR TO THE START OF CONSTRUCTION ACTIVITY, THE CONTRACTOR SHALL COORDINATE WITH THE PROJECT ARBORIST IN A TIMELY MANNER TO REVIEW THE TREE PROTECTION PLAN, VERIFY THAT TREES TO BE RETAINED ARE IDENTIFIED WITH NUMBERED TAGS ON THE GROUND, AND TO INSPECT AND VERIFY THE INSTALLATION OF TREE PROTECTION MEASURES.
- FENCING. TREES TO REMAIN ON SITE SHALL BE PROTECTED BY INSTALLATION OF TREE PROTECTION FENCING AS DEPICTED ON SITE PLANS IN ORDER TO PREVENT INJURY TO TREE TRUNKS OR ROOTS, OR SOIL COMPACTION WITHIN THE ROOT PROTECTION AREA. FENCES SHALL BE A MINIMUM 6-FOOT HIGH 2-INCH CHAIN LINK MESH SECURED TO METAL POSTS DRIVEN INTO THE GROUND. THE CONTRACTOR IS RESPONSIBLE FOR COORDINATING WITH THE PROJECT ARBORIST PRIOR TO OPENING, ADJUSTING OR REMOVING TREE PROTECTION FENCING.
- TREE PROTECTION ZONE. WITHOUT AUTHORIZATION FROM THE PROJECT ARBORIST, NONE OF THE FOLLOWING SHALL OCCUR BENEATH THE DRIPLINE OF ANY PROTECTED TREE:
 - GRADE CHANGE OR CUT AND FILL;
 - NEW IMPERVIOUS SURFACES;
 - UTILITY OR DRAINAGE FIELD PLACEMENT;
 - STAGING OR STORAGE OF MATERIALS AND EQUIPMENT; OR
 - VEHICLE MANEUVERING.
- TREE AND STUMP REMOVAL. TREES TO BE REMOVED SHALL BE CLEARLY IDENTIFIED WITH TREE-MARKING PAINT OR OTHER METHODS APPROVED IN ADVANCE BY THE PROJECT ARBORIST. PROTECTION FENCING MAY BE TEMPORARILY OPENED IN TRACT 8 FOR REMOVAL OF TREES #6654 AND #6655, IN THE REAR OF LOT 3 FOR REMOVAL OF TREE #6248 AND #6375, IN THE REAR OF LOT 9 FOR REMOVAL OF TREE #6316 AND IN THE REAR OF LOT 10 FOR REMOVAL OF TREES #6389 AND #6390. WITHIN TREE PROTECTION ZONES, TREE REMOVAL SHALL BE PERFORMED WITH HAND TOOLS ONLY AND TREES SHALL BE DIRECTIONALLY FELLED OR SURGICALLY REMOVED TO AVOID DAMAGE TO REMAINING NEARBY TREES. THE STUMPS OF THESE PARTICULAR TREES SHALL REMAIN IN THE GROUND, BE REMOVED APPROXIMATELY 6-INCHES BELOW THE GROUND SURFACE USING A STUMP GRINDER, OR ELSE EXTRACTED FROM THE GROUND UNDER ARBORIST SUPERVISION.

- PRUNING. PRUNING MAY BE NEEDED TO PROVIDE OVERHEAD CLEARANCE AND TO REMOVE DEAD AND DEFECTIVE BRANCHES FOR SAFETY. THE PROJECT ARBORIST CAN HELP IDENTIFY WHERE PRUNING IS NECESSARY ONCE TREES RECOMMENDED FOR REMOVAL HAVE BEEN REMOVED AND THE SITE IS PREPARED FOR CONSTRUCTION. TREE REMOVAL AND PRUNING SHALL BE PERFORMED BY A QUALIFIED TREE SERVICE.
- EXCAVATION AND ROOT PRUNING. EXCAVATION BENEATH PROTECTED TREE DRIPLINES SHALL BE AVOIDED IF ALTERNATIVES ARE AVAILABLE. IF EXCAVATION IS UNAVOIDABLE, THE PROJECT ARBORIST SHALL EVALUATE THE PROPOSED EXCAVATION TO DETERMINE METHODS TO MINIMIZE IMPACTS TO TREES. ROOT PRUNING SHALL BE DIRECTED AND DOCUMENTED BY THE PROJECT ARBORIST.
- LANDSCAPING. FOLLOWING CONSTRUCTION AND WHERE LANDSCAPING IS DESIRED, APPLY APPROXIMATELY 3-INCHES OF MULCH BENEATH THE DRIPLINE OF PROTECTED TREES IN A MINIMUM 5-FOOT RADIUS AROUND TREE TRUNKS; DO NOT PILE MULCH DIRECTLY AGAINST TREE TRUNKS. SHRUBS AND GROUND COVER PLANTS MAY BE PLANTED WITHIN THE GRASS-FREE MULCH RINGS. IF IRRIGATION IS USED, USE DRIP IRRIGATION OR LOW FLOW EMITTERS INSTALLED AT NATIVE GRADE (NO TRENCHING) ONLY BENEATH THE DRIPLINES OF PROTECTED TREES. LANDSCAPING SHALL BE PERFORMED BY HAND AND WITH HAND TOOLS ONLY BENEATH PROTECTED TREE DRIPLINES; ADJUST THE LOCATION OF PLANTS TO AVOID TREE ROOT IMPACTS.
- QUALITY ASSURANCE. A QUALIFIED ARBORIST SHOULD SUPERVISE PROPER EXECUTION OF THIS PLAN ON-CALL DURING CONSTRUCTION ACTIVITIES THAT COULD ENDOURAGE ON RETAINED TREES. TREE PROTECTION SITE INSPECTION MONITORING REPORTS SHOULD BE PROVIDED TO THE CLIENT AND CITY FOLLOWING EACH SITE VISIT PERFORMED DURING CONSTRUCTION.
- REASSESSMENT. TREES THAT ARE RETAINED WITH SITE IMPROVEMENT WORK SHOULD BE REASSESSSED IN TERMS OF FUTURE HOME PLANS; ADDITIONAL TREE REMOVAL OR ALTERNATIVE TREE PROTECTION MEASURES MAY BE NEEDED.

CONDITION

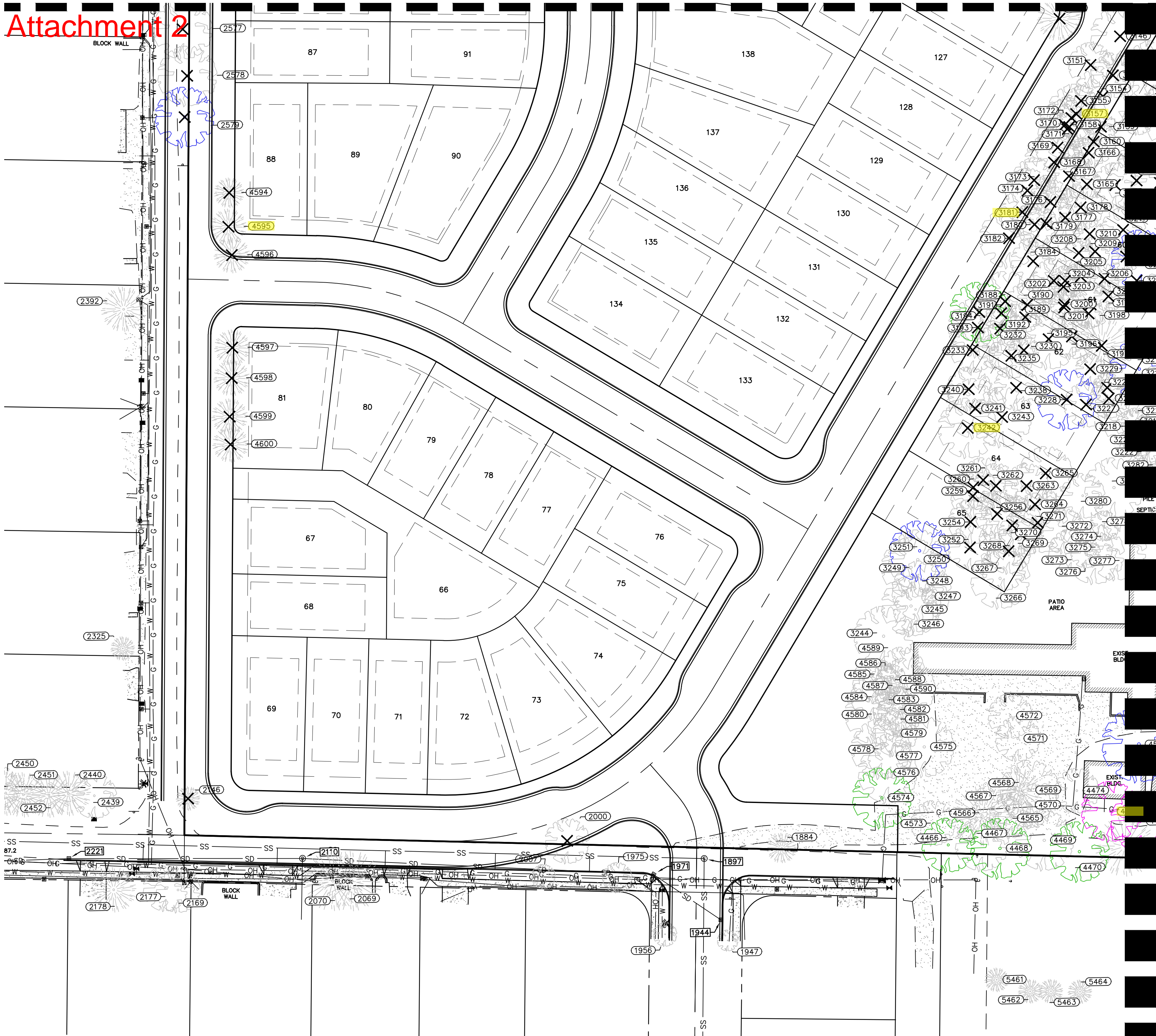
- GOOD
- FAIR
- POOR
- VERY POOR

TREE #	SPECIES	DBH+	REMOVE
1283	OAK	12	REMOVE
1356	FIR	18	
1357	FIR	18	
1365	FIR	20	
1376	FIR	14	
1433	FIR	10	
1439	BIRCH	12	
1441	BIRCH	12	
1521	PINE	18	
4592	WALNUT	32	REMOVE
4593	WALNUT	24	REMOVE
4612	FIR (x2)	14	
4615	FIR	12	
4616	FIR	14	
4617	FIR	14	
4618	PINE	14	
4619	FIR	16	
4622	FIR	14	
4624	FIR	16	
4625	FIR	18	
4628	FIR	16	
4629	FIR	22	
4630	FIR	16	
4633	FIR	18	
4634	FIR (x2)	22	
4635	FIR	20	
4638	DECD	14	
4639	FIR	14	
4642	FIR	16	REMOVE
4643	FIR	16	REMOVE
4644	FIR	14	REMOVE
4645	FIR	18	REMOVE
4646	FIR	12	REMOVE
4647	FIR	18	REMOVE
4648	FIR	14	REMOVE
4649	FIR	18	REMOVE
4650	FIR	18	REMOVE
4651	MADRONA	10	REMOVE
4652	WALNUT	28	REMOVE
4653	FIR	12	REMOVE
4654	FIR	16	REMOVE
4655	FIR	14	REMOVE
4656	FIR	14	REMOVE
4657	FIR	20	REMOVE
4658	FIR	18	REMOVE
4659	FIR	18	REMOVE
4660	FIR	12	REMOVE
4661	FIR	12	REMOVE
4662	FIR	14	REMOVE
4663	FIR	14	REMOVE
4664	FIR	18	REMOVE
4665	FIR	20	REMOVE
4666	FIR	14	REMOVE
4667	FIR	14	REMOVE
4668	FIR	14	REMOVE
4669	FIR	16	REMOVE
4670	FIR	14	REMOVE
4671	FIR	16	REMOVE
4672	FIR	10	REMOVE
4673	FIR	16	REMOVE
4674	FIR	16	REMOVE
4675	FIR	14	REMOVE
4676	FIR	14	REMOVE
4677	FIR	12	REMOVE
4678	FIR	18	REMOVE
4679	FIR	18	REMOVE
4680	FIR	24	REMOVE
4681	FIR	18	REMOVE
4682	FIR	12	REMOVE
4683	FIR	18	REMOVE
4684	FIR	12	REMOVE
4685	FIR	10	REMOVE
4686	FIR	10	REMOVE
4687	FIR	16	REMOVE
4688	FIR (x2)	12	REMOVE
4689	FIR	24	REMOVE
4690	MADRONA	10	REMOVE
4692	FIR	16	REMOVE
4697	FIR	10	
4703	FIR	20	REMOVE
4704	FIR	18	REMOVE
4705	FIR	12	
4706	FIR	16	REMOVE
4707	FIR	16	
4708	FIR	12	

TREE #	SPECIES	DBH+	REMOVE
4710	FIR	16	REMOVE
4711	FIR	18	REMOVE
5013	MADRONA	12	REMOVE
5022	FIR	16	
5023	FIR	32	
5024	FIR	18	REMOVE
5026	FIR	28	REMOVE
5027	FIR	16	REMOVE
5028	FIR	18	REMOVE
5029	FIR	20	REMOVE
5561	FIR	14	REMOVE
5565	MADRONA	10	REMOVE
5568	FIR	20	REMOVE
5569	FIR	16	REMOVE
5571	FIR	18	REMOVE
5572	FIR	20	REMOVE
5575	FIR	20	REMOVE
5576	FIR	20	REMOVE
5578	FIR	18	REMOVE
5579	FIR	16	REMOVE
5580	FIR	18	REMOVE
5581	FIR	16	REMOVE
5582	FIR	14	REMOVE
5583	FIR	10	REMOVE
5584	FIR	12	REMOVE
5585	FIR	16	REMOVE
5586	FIR	12	REMOVE
5588	FIR	16	REMOVE
5589	FIR	22	REMOVE
5591	FIR	14	REMOVE
5592	FIR	26	REMOVE
5593	FIR	20	REMOVE
5594	FIR	16	REMOVE
5595	FIR	10	REMOVE
5596	FIR	16	REMOVE
5597	FIR	16	REMOVE
5598	FIR	14	REMOVE
5599	FIR	18	REMOVE
5600	FIR	16	REMOVE
5601	FIR	16	REMOVE
5603	FIR	16	REMOVE
5604	FIR	18	REMOVE
5605	FIR	18	REMOVE
5606	FIR	18	REMOVE
5608	FIR	26	REMOVE
5609	FIR	10	REMOVE
5610	FIR	18	REMOVE
5611	FIR	20	REMOVE
5612	FIR	14	REMOVE
5613	FIR	10	REMOVE
5614	FIR	18	REMOVE
5615	FIR	18	REMOVE
5616	FIR	18	REMOVE
5617	FIR	16	REMOVE
5618	FIR	16	REMOVE
5620	FIR	16	REMOVE
5621	FIR	18	REMOVE
5622	FIR	18	REMOVE
5623	FIR	16	REMOVE
5624	FIR	14	REMOVE
5626	FIR	18	REMOVE
5627	FIR	16	REMOVE
5628	FIR	12	REMOVE
5629	FIR	12	REMOVE
5630	FIR	12	REMOVE
5631	CTNWD	28	REMOVE
5633	FIR	12	
5669	FIR	12	
5670	FIR	12	REMOVE
5671	PINE	10	REMOVE
5672	PINE	10	
5675	PINE	10	REMOVE
5676	FIR	14	REMOVE
5677	FIR	12	REMOVE
5678	FIR	16	REMOVE
5679	FIR	10	REMOVE

TREE #	SPECIES	DBH+	REMOVE
5683	PINE	10	REMOVE
5684	FIR	12	REMOVE
5686	FIR	10	REMOVE
5687	PINE	12	REMOVE
5689	FIR	12	REMOVE
5690	PINE	12	REMOVE
5692	FIR	10	REMOVE
5693	FIR	12	REMOVE
5695	PINE	14	REMOVE
5697	PINE	14	REMOVE
5699	PINE	12	REMOVE
5716	PINE	12	
5718	PINE	10	REMOVE
5719	FIR	12	REMOVE
5722	FIR	16	REMOVE
5725	PINE	12	REMOVE
5726	PINE	12	REMOVE
5727	PINE	10	REMOVE
5729	PINE	14	REMOVE
5731	PINE	10	REMOVE
5732	PINE	10	REMOVE
5733	PINE	10	REMOVE
5734	PINE	10	REMOVE
5735	PINE	10	REMOVE
5740	PINE	10	REMOVE
5743	PINE	10	REMOVE
5744	FIR	10	REMOVE
5748	FIR	10	REMOVE
5750	PINE	12	REMOVE
5751	PINE	12	REMOVE
5754	MADRONA	10	REMOVE
5757	PINE	12	REMOVE
5759	PINE	12	REMOVE
5761	FIR	10	REMOVE
5762	FIR	10	REMOVE
5763	PINE	10	REMOVE
5766	PINE	12	REMOVE
5768	PINE	10	REMOVE
5770	FIR	10	REMOVE
5771	FIR	12	REMOVE
5772	FIR	10	REMOVE
5773	PINE	10	REMOVE
5778	FIR	10	REMOVE
5779	PINE	12	REMOVE
5781	PINE	10	REMOVE
5782	PINE	12	REMOVE
5783	FIR	10	REMOVE
5784	PINE	10	REMOVE
5785	FIR	10	REMOVE
5786	FIR	10	REMOVE
5791	FIR	12	REMOVE
5793	DECID	10	REMOVE
5794	PINE	10	REMOVE
5795	PINE	12	REMOVE
DBH+ DIAMETER AT BREAST HEIGHT, INCHES.			
INDICATES OFFSITE TREE, OR TREE NOT INCLUDED WITHIN PROJECT AREA, NOT INCLUDED IN TREE PRESERVATION COUNT.			

Attachment 2



TREE PROTECTION SPECIFICATIONS

1. PRECONSTRUCTION CONFERENCE. PRIOR TO THE START OF CONSTRUCTION ACTIVITY, THE CONTRACTOR SHALL COORDINATE WITH THE PROJECT ARBORIST TO DETERMINE THE AREAS TO BE REVIEWED FOR TREE PROTECTION PLAN, VERIFY THAT TREES TO BE RETAINED ARE IDENTIFIED WITH NUMBERED TAGS ON THE GROUND, AND TO INSPECT AND VERIFY THE INSTALLATION OF TREE PROTECTION MEASURES.
2. FENCING TREES TO REMAIN ON SITE SHALL BE PROTECTED BY INSTALLATION OF TREE PROTECTION FENCING AS DEPICTED ON SITE PLANS IN ORDER TO PREVENT ENTRY TO TREE TRUNKS OR ROOTS OR SOIL COMPACTED WITHIN THE ROOT PROTECTION AREA. FENCES SHALL BE A MINIMUM 6-FOOT HIGH 2-INCH CHAIN LINK MESH SECURED TO METAL POSTS AND BE ADJACENT TO THE TREE. THE CONTRACTOR IS RESPONSIBLE FOR COORDINATING WITH THE PROJECT ARBORIST PRIOR TO OPENING, ADJUSTING OR REMOVING TREE PROTECTION FENCING.
3. TREE PROTECTION ZONE. THE TREE PROTECTION ZONE SHALL BE AUTHORIZED FROM THE PROJECT ARBORIST, NONE OF THE FOLLOWING

SHALL OCCUR BENEATH

- ANY PROTECTED TREE:
- a) GRADE CHANGE OR CUT AND FILL;
 - b) NEW IMPERVIOUS SURFACES;
 - c) UTILITY OR DRAINAGE FIELD PLACEMENT;
 - d) STAGING OR STORAGE OF MATERIALS AND EQUIPMENT; OR
 - e) VEHICLE MANEUVERING.

THE CONTRACTOR SHALL BE RESPONSIBLE FOR CONTACTING THE PROJECT ARBORIST IN A TIMELY MANNER PRIOR TO WORKING BENEATH PROTECTED TREE DRUPLINES. ROOT PROTECTION ZONES MAY BE ENTERED FOR TASKS LIKE SURVEYING, MEASURING AND SAMPLING. FENCES MUST BE CLOSED UPON COMPLETION OF THESE TASKS.

4. TREE AND STUMP REMOVAL. TREES TO BE REMOVED SHALL BE CLEARLY IDENTIFIED WITH TREE-MARKING PAINT OR OTHER METHODS APPROVED IN ADVANCE BY THE PROJECT ARBORIST. PROTECTION FENCING MAY BE TEMPORARILY OPENED IN TRACT 1 FOR REMOVAL OF TREES #6654 AND

#6655, IN THE REAR OF LOT 3 FOR REMOVAL OF TREE #6248 AND #6375, IN THE REAR OF LOT 9 FOR REMOVAL OF TREE #50316 AND IN THE REAR OF LOT 10 FOR REMOVAL OF TREES #50398 AND #50399. WITHIN TREE PROTECTION ZONES, REMOVAL SHALL BE PERFORMED WITH HAND TOOLS ONLY AND TREES SHALL BE DIRECTIONALLY FELLED OR SURGICALLY REMOVED TO AVOID DAMAGE TO REMAINING NEARBY TREES. THE STUMPS OF THESE PARTICULAR TREES SHALL REMAIN IN THE GROUND, BE REMOVED APPROXIMATELY 6-INCHES BELOW THE GROUND SURFACE USING A STUMP GRINDER, OR ELSE EXTRACTED FROM THE GROUND UNDER ARBORIST SUPERVISION.

5. PRUNING. PRUNING MAY BE NEEDED TO PROVIDE OVERHEAD CLEARANCE AND TO REMOVE DEAD AND DEFECTIVE BRANCHES FOR SAFETY. THE PROJECT ARBORIST CAN HELP IDENTIFY WHERE PRUNING IS NECESSARY ONCE TREES RECOMMENDED FOR REMOVAL HAVE BEEN REMOVED AND THE SITE IS PREPARED FOR CONSTRUCTION. TREE REMOVAL AND PRUNING SHALL BE PERFORMED BY A QUALIFIED TREE SERVICE.

6. EXCAVATION AND ROOT PROTECTING:
EXCAVATION BENEATH PROTECTED TREE DRUPLINES SHALL BE AVOIDED IF ALTERNATIVES ARE AVAILABLE. IF EXCAVATION IS UNAVOIDABLE, THE PROJECT ARBORIST SHALL EVALUATE THE PROPOSED EXCAVATION TO DETERMINE METHODS TO MINIMIZE IMPACTS TO TREES. ROOT PRUNING SHALL BE DOCUMENTED AND DOCUMENTED BY THE PROJECT ARBORIST.
7. LANDSCAPING, FOLLOWING CONSTRUCTION AND WHERE LANDSCAPING IS DESIRED, APPROXIMATELY 5% OF THE VOLUME OF MULCH BENEATH THE DRUPLINE OF PROTECTED TREES IN A MINIMUM 5-FOOT RADIUS AROUND TREE TRUNKS; DO NOT PILE MULCH DIRECTLY AGAINST TREE

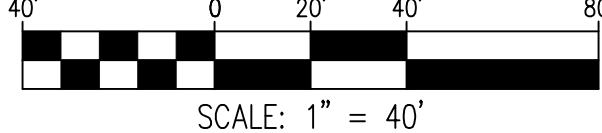
- TRUNKS, SHRUBS AND GROUND COVER PLANTS MAY BE PLANTED WITHIN THE GRASS-FREE MULCH RINGS. IF IRRIGATION IS USED, USE DRIP IRRIGATION OR LOW FLOW EMITTERS INSTALLED AT NATIVE GRADE (NO TRENCHING) ONLY BENEATH THE DRILINES OF PROTECTED TREES. LANDSCAPING SHALL BE PERFORMED BY HAND AND WITH HAND TOOLS ONLY BENEATH PROTECTED TREE DRILINES; ADJUST THE LOCATION OF PLANTS TO

8. **QUALITY ASSURANCE.** A QUALIFIED ARBORIST SHOULD SUPERVISE PROPER EXECUTION OF THIS PLAN ON-CALL DURING CONSTRUCTION ACTIVITIES THAT COULD ENCROACH ON RETAINED TREES. TREE PROTECTION SITE INSPECTION MONITORING REPORTS SHOULD BE PROVIDED TO THE CLIENT AND CITY FOLLOWING EACH SITE VISIT PERFORMED DURING CONSTRUCTION.

9. REASSESSMENT. TREES THAT ARE RETAINED WITH SITE IMPROVEMENT WORK SHOULD BE REASSESSED IN TERMS OF FUTURE HOME PLANS; ADDITIONAL TREE REMOVAL OR ALTERNATIVE TREE PROTECTION MEASURES MAY BE NEEDED.

CONDITION

	GOOD
	FAIR
	POOR
	VERY POOR



TREE #	SPECIES	DBH+	REMOVE
1884	CEDAR	14	
2000	OAK	16	REMOVE
2069	FIR	36	
2070	FIR	32	
2146	FIR	16	REMOVE
2169	BIRCH	12	
2177	BIRCH	14	
2178	FIR	22	
2256	PINE	10	
2325	FIR	12	
2392	FIR	30	
2439	OAK	12	
2440	FIR	16	
2449	ALDER	16	
2450	FIR	16	
2451	FIR	16	
2452	FIR	16	
2577	OAK	20	
2578	OAK	20	
2579	OAK	32	
3146	OAK (x2)	18	REMOVE
3149	FIR	16	REMOVE
3151	OAK	14	REMOVE
3153	OAK (x2)	14	REMOVE
3154	OAK (x2)	18	REMOVE
3155	OAK	18	REMOVE
3157	OAK	18	REMOVE
3158	OAK	12	REMOVE
3159	OAK	10	REMOVE
3160	OAK	16	REMOVE
3161	OAK	12	
3162	OAK (x3)	16	
3163	OAK	22	
3164	OAK (x2)	14	REMOVE
3165	OAK	12	REMOVE
3166	OAK	10	REMOVE
3167	OAK (x2)	14	REMOVE
3168	OAK (x2)	12	REMOVE
3169	OAK (x2)	10	REMOVE
3170	OAK	18	REMOVE
3171	OAK	10	REMOVE
3172	OAK	10	REMOVE
3173	OAK	10	REMOVE
3174	OAK	10	REMOVE
3176	OAK	12	REMOVE
3177	OAK	14	REMOVE
3178	OAK	16	REMOVE
3179	OAK (x2)	18	REMOVE
3180	OAK	12	REMOVE
3181	OAK (x2)	18	REMOVE
3182	OAK	18	REMOVE
3184	OAK	10	REMOVE
3188	OAK (x3)	12	REMOVE
3189	OAK	14	REMOVE
3190	OAK (x2)	10	REMOVE
3191	OAK	10	REMOVE
3192	OAK	14	REMOVE
3193	OAK (x3)	14	REMOVE
3194	OAK	24	REMOVE
3195	OAK (x2)	16	REMOVE
3196	OAK	14	REMOVE
3197	FIR	24	REMOVE
3198	OAK	12	REMOVE
3199	OAK	14	REMOVE
3200	OAK	10	REMOVE
3201	OAK	16	REMOVE
3202	OAK	12	REMOVE
3203	OAK	12	REMOVE
3204	OAK	14	REMOVE
3205	OAK	10	REMOVE
3206	OAK	14	REMOVE
3207	OAK	10	REMOVE
3208	OAK	14	REMOVE
3209	OAK	14	REMOVE
3210	OAK	12	REMOVE
3211	OAK	14	REMOVE
3212	OAK	12	REMOVE
3213	OAK	28	REMOVE
3214	OAK (x2)	16	REMOVE
3216	OAK	18	
3217	OAK	24	
3218	OAK	16	
3219	OAK	10	
3220	OAK	12	
3221	OAK	16	
3225	OAK	18	REMOVE

TREE #	SPECIES	DBH+	REMOVE
3226	OAK	12	REMOVE
3227	OAK (x2)	12	REMOVE
3228	OAK	32	REMOVE
3229	OAK	12	REMOVE
3230	OAK	10	REMOVE
3232	OAK	16	REMOVE
3233	OAK	12	REMOVE
3235	OAK (x2)	12	REMOVE
3238	OAK	16	REMOVE
3240	OAK	10	REMOVE
3241	OAK (x2)	16	REMOVE
3242	OAK (x3)	16	REMOVE
3243	OAK (x3)	16	REMOVE
3244	OAK (x5)	14	
3245	OAK	14	
3246	OAK (x2)	16	
3247	OAK	15	
3248	OAK	18	
3249	OAK (x2)	12	
3250	OAK	16	
3251	OAK	24	
3252	OAK	14	REMOVE
3254	OAK	10	REMOVE
3256	OAK	10	REMOVE
3259	OAK	12	REMOVE
3260	OAK	14	REMOVE
3261	OAK (x3)	12	REMOVE
3262	OAK	10	REMOVE
3263	OAK (x3)	10	REMOVE
3264	OAK	10	REMOVE
3265	OAK	16	REMOVE
3266	OAK	16	
3267	OAK	10	
3268	OAK	16	REMOVE
3269	OAK	10	REMOVE
3270	OAK	18	REMOVE
3271	OAK (x3)	12	REMOVE
3272	OAK (x2)	12	
3273	OAK	18	
3274	OAK	10	
3275	OAK (x2)	18	
3276	OAK	12	
3277	OAK	22	
3278	OAK	10	
3280	OAK	18	
3281	OAK (x2)	16	
4466	OAK	30	
4467	OAK	18	
4468	OAK	24	
4469	OAK	22	
4470	OAK	24	
4471	FIR	36	
4472	OAK	24	
4473	OAK	24	
4474	OAK	14	
4500	OAK	36	
4565	OAK	18	
4566	FIR	36	
4567	OAK	14	
4568	FIR	16	
4569	OAK	20	
4570	OAK	14	
4571	OAK	20	
4572	OAK	19	
4573	OAK	18	
4574	OAK	28	
4575	OAK	22	
4576	OAK	20	
4577	OAK	12	
4578	OAK	18	
4579	OAK	14	
4580	OAK	18	
4581	OAK	14	
4582	OAK	14	
4583	OAK	12	
4584	OAK	10	
4585	OAK	12	
4586	OAK	10	
4587	OAK	12	
4589	OAK (x2)	12	
4590	OAK (x2)	16	
4594	FIR	18	REMOVE
4595	FIR	18	REMOVE
4596	FIR	20	REMOVE
4597	FIR	22	REMOVE
4598	FIR	20	REMOVE
4599	FIR	18	REMOVE
4600	FIR	20	REMOVE

[illegible]

TREE PRESERVATION AND REMOVAL PLAN - SOUTHWEST

[illegible]

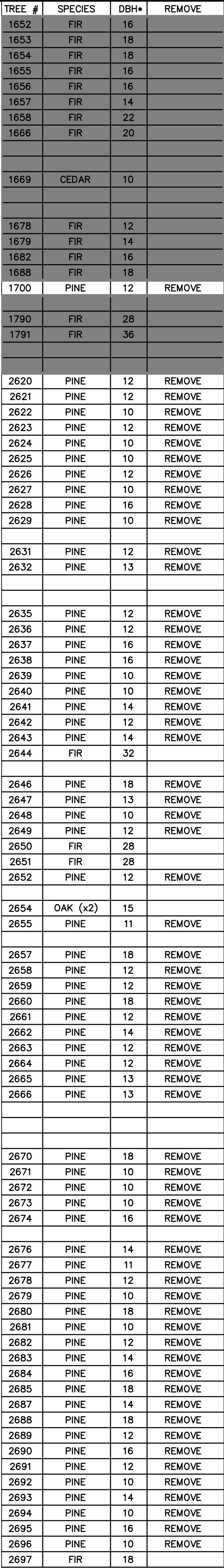
EMERIO
ENGINEERING • SURVEYING • DESIGN

2667 WILLAKENE ROAD, SUITE 1A
EUGENE, OREGON 97401
TEL: (503) 746-8812
FAX: (503) 746-8813
www.emeriodesign.com

EMERIO

REGISTERED PROFESSIONAL ENGINEER
PRELIMINARY
NOT FOR CONSTRUCTION
PROJECT NO. 17010
HAWKINS
EXPIRES: 6/30/2023

SHEET
P3.3



TREE #	SPECIES	DBH*	REMOVE
2699	FIR	22	
2700	FIR	34	
2701	FIR	48	
2702	FIR	28	
2703	FIR	24	
2704	FIR	42	
2705	FIR	28	
2706	FIR	28	
2707	FIR	26	
2708	FIR	40	
2709	FIR	14	
2710	FIR	32	
2713	FIR	12	
2714	FIR	28	
2716	FIR	28	
2717	FIR	32	
2718	FIR	40	
2719	FIR	28	
2720	FIR	28	
2721	FIR	32	
2722	FIR	44	
2723	FIR	40	
2724	FIR	48	
2725	FIR	22	
2726	FIR	24	
2727	OAK	38	
2728	OAK	16	
2729	OAK	24	
2730	OAK	18	
2731	OAK	12	
2732	FIR	30	
2733	OAK	14	
2734	OAK	14	
2735	FIR	30	
2736	FIR	18	
2737	FIR	14	
2738	FIR	30	
2739	OAK	24	
2740	FIR	22	
2741	FIR	12	
2742	FIR	12	
2743	FIR	28	
2744	FIR	24	
2745	FIR	23	
2746	FIR	14	
2749	FIR	18	
2750	FIR	30	
2751	FIR	32	
2752	FIR	24	
2753	PINE	14	
2755	DECD	10	
2756	FIR	40	
2757	FIR	32	
2758	FIR	32	
2759	FIR	32	
2760	FIR	30	
2761	FIR	16	
2762	FIR	22	
2763	FIR	36	
2764	FIR	52	
2765	PINE	12	
2769	FIR	22	
2770	PINE	16	
2771	FIR	16	
2772	FIR	14	
2773	FIR	16	
2774	FIR	10	
2776	FIR	12	
2777	FIR	12	
2778	FIR	26	
2779	FIR	26	
2780	FIR	30	
2781	BIRCH	12	
2782	OAK	14	
2783	OAK (x3)	14	
2784	OAK	18	
2785	OAK	10	
2786	OAK	18	
2787	OAK	10	
2788	OAK	10	
2789	OAK	18	
2793	OAK	24	
2796	OAK	24	
2798	DECD	14	
2815	OAK	26	
2822	OAK	44	
2823	OAK	24	REMOVE
2824	OAK	26	
2825	OAK	20	REMOVE
2826	OAK (x3)	16	REMOVE
2827	OAK (x2)	14	REMOVE
2828	OAK	20	
2829	OAK	18	
2830	OAK	18	
2831	OAK	18	

REE #	SPECIES	DBH*	REMOVE
2832	OAK	24	
2833	OAK (x2)	16	REMOVE
2834	OAK	22	REMOVE
2835	OAK	10	
2836	OAK	30	
2837	OAK	18	
2838	OAK (x3)	18	
2839	OAK (x2)	12	
2840	OAK	20	
3073	FIR	14	
3074	FIR	14	
3075	FIR	36	
3076	FIR	26	
3077	FIR	24	
3078	FIR	24	
3079	FIR	24	
3080	FIR	15	
3081	FIR	26	
3082	FIR	22	
3083	WALNUT	10	
3084	OAK	28	
3086	FIR	10	
3087	OAK	17	
3088	OAK	22	
3089	OAK (x2)	16	
3092	OAK (x2)	18	
3093	OAK	22	
3094	OAK	20	
3095	OAK (x3)	14	
3096	OAK	14	
3097	OAK	10	
3098	OAK	10	
3099	OAK (x2)	12	
3100	OAK	20	
3101	OAK	12	
3102	OAK (x2)	16	
3103	OAK (x2)	12	
3104	OAK	12	
3105	OAK	16	
3106	OAK (x2)	18	
3107	OAK	12	
3108	OAK	12	
3109	OAK	28	
3110	OAK (x2)	14	REMOVE
3111	OAK	14	
3112	OAK	10	REMOVE
3113	OAK	10	REMOVE
3114	OAK	14	REMOVE
3115	OAK	16	REMOVE
3116	OAK (x2)	16	REMOVE
3117	OAK	16	REMOVE
3119	OAK	12	REMOVE
3120	OAK	18	REMOVE
3121	OAK	12	REMOVE
3122	OAK	14	REMOVE
3123	OAK	10	REMOVE
3124	FIR	30	
3125	OAK	14	
3126	OAK	12	
3127	OAK	12	
3128	FIR	20	
3129	FIR	36	
3130	OAK	12	
3131	OAK	12	
3132	OAK	12	
3133	OAK	18	
3134	OAK (x2)	22	
3135	OAK	22	
3136	OAK	14	
3137	OAK	22	
3138	OAK (x2)	20	
3139	OAK	18	
3140	OAK	14	
3141	OAK	22	REMOVE
3142	OAK	20	REMOVE
3143	OAK	20	REMOVE
3144	OAK	10	REMOVE
3145	OAK	12	REMOVE
3222	OAK	12	
3223	OAK	14	
3224	OAK	16	
3360	OAK	24	
3361	OAK	22	
3362	OAK	18	
3363	OAK (x2)	18	
3364	OAK (x2)	18	
3365	OAK (x2)	12	
3444	FIR	16	
3445	FIR	24	
3446	OAK	24	
3447	FIR	24	
3448	FIR	20	
3449	FIR	22	
3450	FIR	36	
5634	FIR	16	
5635	FIR	14	REMOVE

TREE #	SPECIES	DBH*	REMOVE
5636	MADRONA	10	REMOVE
5637	FIR (x2)	14	REMOVE
5638	FIR	16	REMOVE
5639	FIR	14	REMOVE
5640	FIR (x2)	16	REMOVE
5641	FIR	26	REMOVE
5642	FIR	18	REMOVE
5643	FIR	16	REMOVE
5644	FIR	16	REMOVE
5645	FIR	18	REMOVE
5646	FIR	14	REMOVE
5647	FIR	16	REMOVE
5648	CTNWD	18	REMOVE
5649	PINE	10	REMOVE
5651	MADRONA	12	REMOVE
5652	PINE	14	REMOVE
5654	PINE	12	REMOVE
5655	PINE	10	REMOVE
5656	PINE	10	REMOVE
5657	PINE	12	REMOVE
5658	PINE	12	REMOVE
5660	PINE	10	REMOVE
5665	PINE	10	REMOVE
5666	PINE	10	REMOVE
5667	PINE	12	REMOVE
5669	FIR	12	REMOVE
5700	PINE	12	REMOVE
5701	FIR	14	REMOVE
5702	PINE	10	REMOVE
5704	PINE	10	REMOVE
5705	PINE	10	REMOVE
5707	PINE	10	REMOVE
5708	PINE	16	REMOVE
5709	FIR	10	REMOVE
5712	PINE	12	REMOVE
5713	PINE	12	REMOVE

DBH* DIAMETER AT BREAST HEIGHT, INCHES.

1. TREE PROTECTION SPECIFICATIONS
PRECONSTRUCTION CONFERENCE. PRIOR TO THE START OF CONSTRUCTION ACTIVITY, THE CONTRACTOR SHALL COORDINATE WITH THE PROJECT ARBORIST IN A TIMELY MANNER TO REVIEW THE TREE PROTECTION PLAN. VERIFY THAT TREES TO BE RETAINED ARE IDENTIFIED WITH NUMBERED TAGS ON THE GROUND, AND TO INSPECT AND VERIFY THE INSTALLATION OF TREE PROTECTION MEASURES.
2. FENCING TREES TO REMAIN ON SITE SHALL BE PROTECTED BY INSTALLATION OF TREE PROTECTION FENCING AS SPECIFIED ON SITE PLANS IN ORDER TO PREVENT INJURY TO TREE TRUNKS OR ROOTS, OR SOIL COMPACTION WITHIN THE ROOT PROTECTION AREA. FENCES SHALL BE A MINIMUM 6-FOOT HIGH 2-INCH CHAIN LINK MESH SECURED TO METAL POSTS DRIVEN INTO THE GROUND. THE CONTRACTOR IS RESPONSIBLE FOR COORDINATING WITH THE PROJECT ARBORIST PRIOR TO OPENING, ADJUSTING OR REMOVING TREE PROTECTION FENCING.
3. TREE PROTECTION ZONE, WITHOUT AUTHORIZATION

- FROM THE PROJECT ARBORIST, NONE OF THE FOLLOWING SHALL OCCUR BENEATH THE DRIPLINE OF ANY PROTECTED TREE:
- a) GRADE CHANGE OR CUT AND FILL;
 - b) NEW IMPERVIOUS SURFACES;
 - c) UTILITY OR DRAINAGE FIELD PLACEMENT;
 - d) STAGING OR STORAGE OF MATERIALS AND EQUIPMENT; OR
 - e) VEHICLE MANEUVERING.

THE CONTRACTOR SHALL BE RESPONSIBLE FOR CONTACTING THE PROJECT ARBORIST IN A TIMELY MANNER PRIOR TO WORKING BENEATH PROTECTED TREE DRUPLINES. ROOT PROTECTION ZONES MAY BE ENTERED FOR TASKS LIKE SURVEYING, MEASURING AND SAMPLING. FENCES MUST BE CLOSED UPON COMPLETION OF THESE TASKS.




TREE AND STUMP REMOVAL. TREES TO BE REMOVED SHALL BE CLEARLY IDENTIFIED WITH TREE-MARKING

- PLANT OR OTHER METHODS APPROVED IN ADVANCE BY THE PROJECT ARBORIST. PROTECTION FENCING SHALL BE IMMEDIATELY OPENED IN TRACT B FOR REMOVAL OF TREE #18653 AND #18652. IN TRACT C, REMOVAL OF LOT 3 FOR REMOVAL OF TREE #6248 AND #6373, IN THE REAR OF LOT 9 FOR REMOVAL OF TREE #40316 AND TREE #40318, IN THE REAR OF LOT 10 FOR REMOVAL OF TREE #40308 AND TREE #40309, WITHIN TREE PROTECTION ZONES, TREE REMOVAL SHALL BE PERFORMED WITH HAND TOOLS ONLY AND TREES SHALL BE DIRECTLY CUT AT THE BASE. SURGICALLY REMOVED BRANCHES SHALL BE CUT NEARBY TREES. THE STUMPS OF THESE REMOVED TREES SHALL REMAIN IN THE GROUND, BE REMOVED APPROXIMATELY 6-INCHES BELOW THE GROUND SURFACE AND BE COVERED WITH MULCH. BRANCHES EXTRACTED FROM THE GROUND UNDER ARBORIST SUPERVISION.
- PRUNING. PRUNING MAY BE NEEDED TO PROVIDE OVERHEAD CLEARANCE AND TO REMOVE DEAD AND DANGEROUS BRANCHES. PRUNING SHALL BE DONE BY AN ARBORIST CAN HELP IDENTIFY WHERE PRUNING IS NECESSARY ONCE TREES RECOMMENDED FOR

- REMOVAL HAVE BEEN REMOVED AND THE SITE IS PREPARED FOR CONSTRUCTION. TREE REMOVAL AND PRUNING SHALL BE PERFORMED BY A QUALIFIED TREE SERVICE.
6. EXCAVATION AND ROOT PRUNING. EXCAVATION BEYOND PROTECTED TREE DRILPINES SHALL BE AVOIDED. ALTERNATIVE ARE PLANNED IF, IF EXCAVATION IS UNAVOIDABLE, THE PROJECT ARBORIST SHALL EVALUATE THE PROPOSED EXCAVATION TO DETERMINE METHODS TO MINIMIZE IMPACTS TO TREES. ROOT PRUNING SHALL BE DIRECTED AND DOCUMENTED BY THE PROJECT ARBORIST.
7. LANDSCAPING FOLLOWING CONSTRUCTION AND WHERE LANDSCAPING IS DESIRED, APPLY APPROXIMATELY 3-INCHES OF MULCH BENEATH THE DRILPINE OF PROTECTED TREES IN A MINIMUM 5-FOOT RADIUS AROUND TREE TRUNKS; DO NOT PLANT MULCH DIRECTLY AGAINST TREE TRUNKS. SHRUBS AND AROUND COVER PLANTS MAY BE PLANTED WITHIN THE GRASS/PEE MULCH RINGS, IF IRRIGATION IS USED, USE DRIP IRRIGATION OR LOW FLOW EMITTERS INSTALLED AT NATIVE GRADE (NO

- TRENCHING) ONLY BENEATH THE DRIPLINES OF PROTECTED TREES. LANDSCAPING SHALL BE PERFORMED BY HAND AND WITH HAND TOOLS ONLY BENEATH PROTECTED TREE DRIPLINES; ADJUST THE LOCATION OF PLANTS TO AVOID TREE ROOT IMPACTS.
8. QUALITY ASSURANCE: A QUALIFIED ARBORIST SHOULD SUPERVISE PROPER EXECUTION OF THIS PLAN ON-CALL DURING CONSTRUCTION ACTIVITIES THAT COULD ENOUGHEN ON RETAINED TREES. TREE PROTECTION SITE INSPECTION MONITORING REPORTS SHOULD BE PROVIDED TO THE CLIENT AND CITY FOLLOWING EACH SITE VISIT PERFORMED DURING CONSTRUCTION.
9. REASSESSMENT: TREES THAT ARE RETAINED WITH SITE IMPROVEMENT WORK SHOULD BE REASSESSED IN TERMS OF FUTURE HUMAN PLANS; ADDITIONAL TREE REMOVAL OR ALTERNATIVE TREE PROTECTION MEASURES MAY BE NEEDED.

- CONDITION**

	GOOD
	FAIR
	POOR

**TREE PRESERVATION AND
REMOVAL PLAN -
SOUTHEAST**

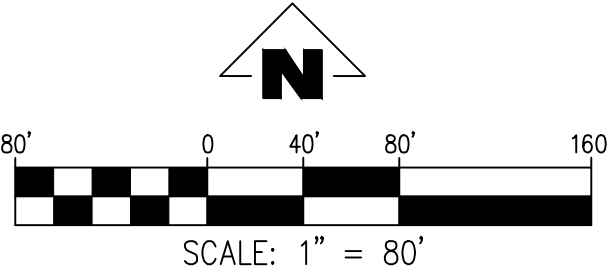
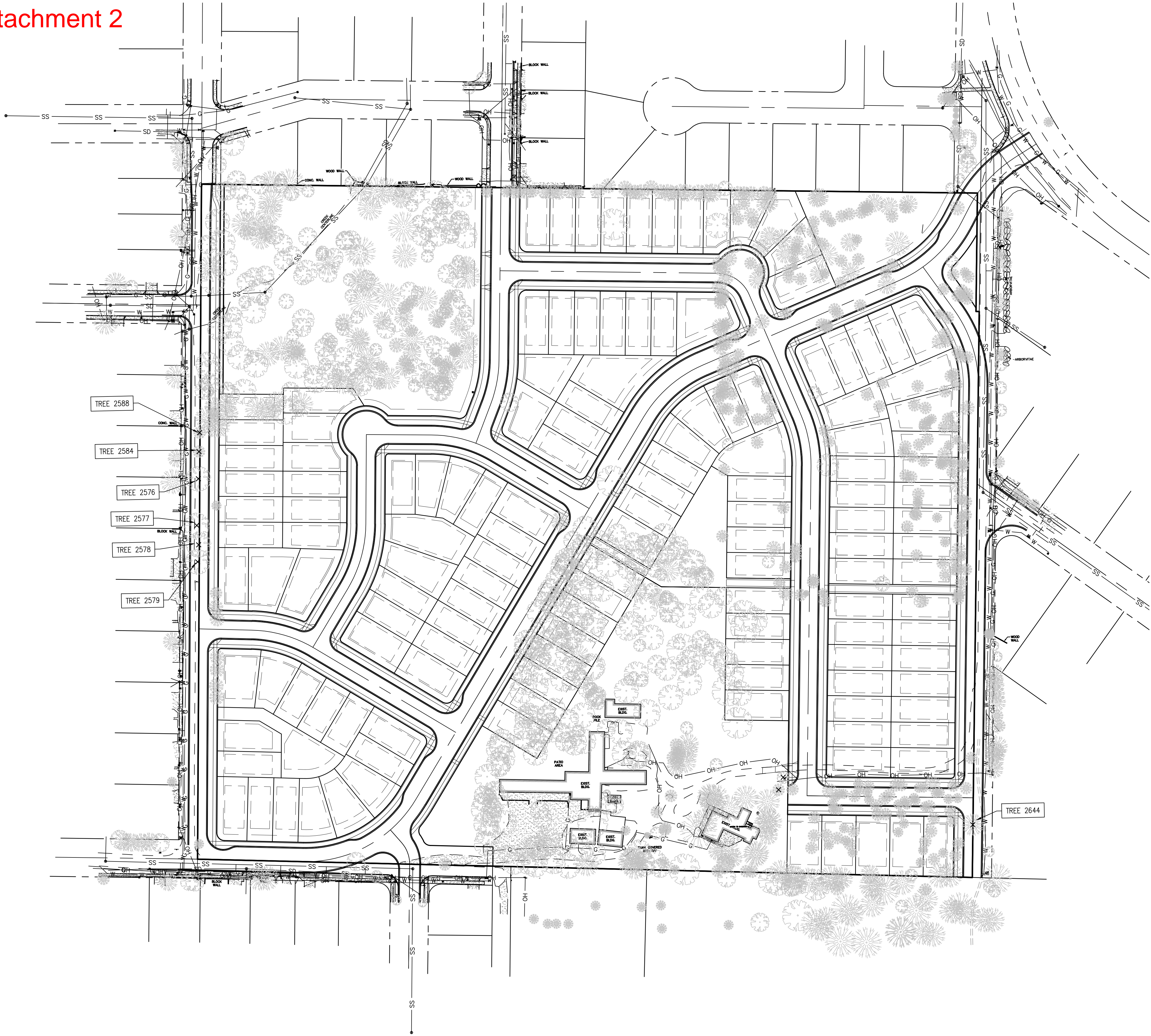
[illegible]

EMERIO
ENGINEERING • SURVEYING • DESIGN
64-855 VIA ALVARADO, IRVINE, CA 92618-1400
TEL: (949) 746-8812
FAX: (949) 639-8592
www.emeriodesign.com

REGISTERED PROFESSIONAL SURVEYOR
No. 1400
CALIFORNIA
PRELIMINARY
NOT FOR CONSTRUCTION
FOR THE PROJECT OF
HAWKINS
EXPIRES: 6/29/2023

SHEET
P3.4 OF **32**

Attachment 2



TREE #	SPECIES	DBH*	REMOVE
2576	OAK	18	REMOVE
2577	OAK	20	REMOVE
2578	OAK	20	REMOVE
2579	OAK	32	REMOVE
2584	PINE	14	REMOVE
2588	PINE	12	REMOVE
2644	FIR	32	REMOVE

DBH* DIAMETER AT BREAST HEIGHT, INCHES.
NOTE: CITY TREES ARE DESIGNATED AS THOSE THAT ARE LOCATED WITHIN THE CURRENT CITY OF SALEM RIGHT OF WAY.

TREE PRESERVATION AND
REMOVAL PLAN - CITY
TREES

4540 PRINGLE RD SE
TAX MAP - 3000 & 3002
TAX MAP - 083W11BC
SW1/4 NW1/4 SEC11 T8S R3W W.M.
SALEM, OREGON

REVISIONS	
NO.	DESCRIPTION



EMERIO
ENGINEERING • SURVEYING • DESIGN

2687 WILLAMETTE ROAD, SUITE 1A
EUGENE, OREGON 97401
TEL: (503) 748-8812
FAX: (503) 639-9592
www.emeriodesign.com

