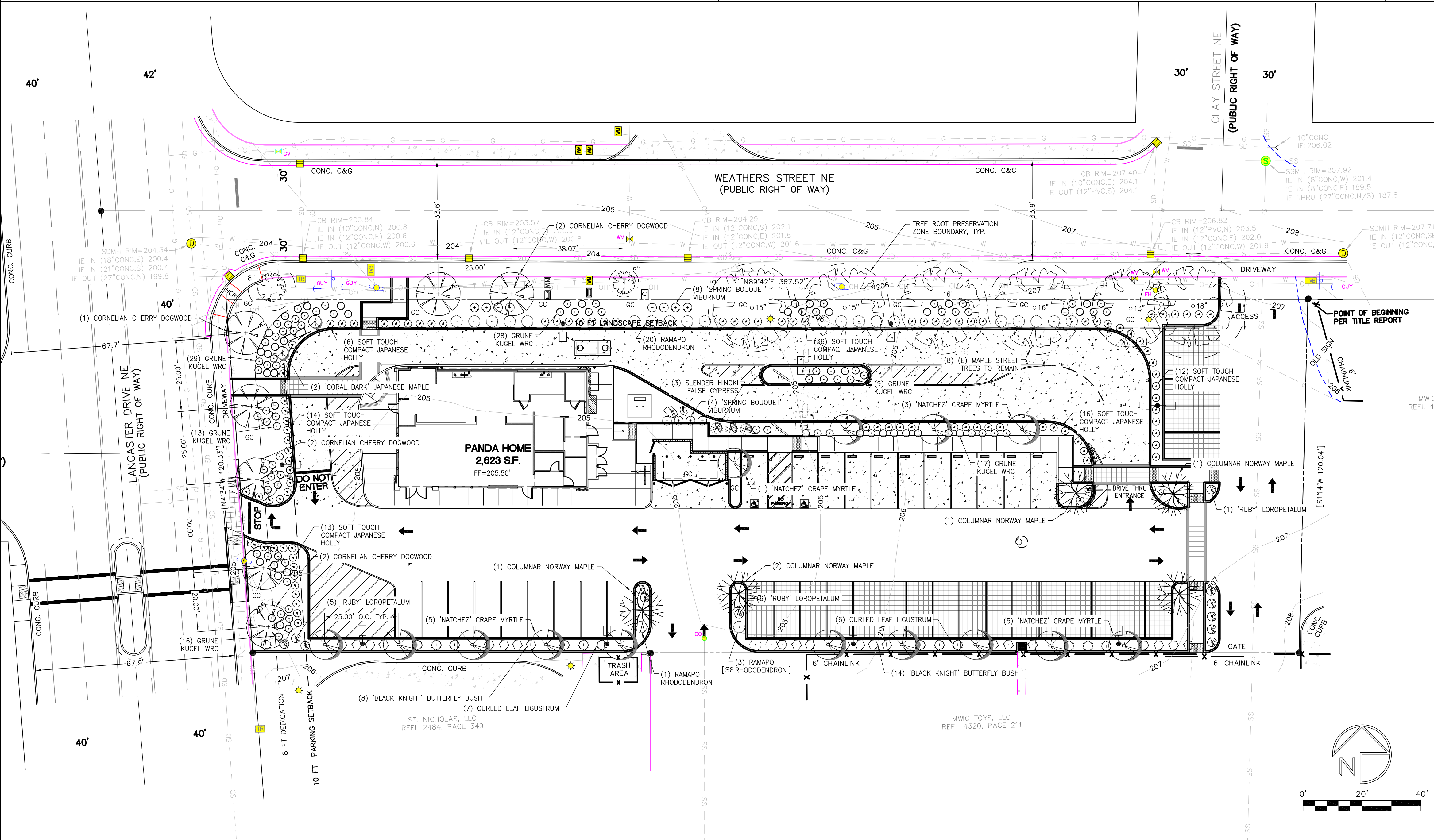


PLANT SCHEDULE					
QTY.	COMMON NAME	BOTANICAL NAME	SIZE	REMARKS	SPACING
TREES					
14	'NATCHEZ' CRAPE MYRTLE	LACINSTRIMA INDICA X FAUERI 'NATCHEZ'	10" - 2" CAL./ 8-9' HT.	B&B: SINGLE TRUNK, EVEN BRANCHING, VIGOROUS GROWTH	VARIES
6	COLUMNAR NORWAY MAPLE	ACER PLATANODES	2" CAL./ 8' HT.	B&B: SINGLE TRUNK, EVEN BRANCHING, VIGOROUS GROWTH	VARIES
1	SLENDER HINKO FALSE CYPRESS	CHAMAECYPARIS OBTUSA 'GRACILIS'	7-8' HT.	CONTAINER, CENTRAL LEADER, PYRAMIDAL, VIGOROUS GROWTH	VARIES
2	CORAL BARK JAPANESE MAPLE	ACER PALMATUM 'SANGOKAKU'	6-7' HT.	B&B: CENTRAL LEADER, EVEN BRANCHING, VIGOROUS GROWTH	VARIES
7	CORNELIAN CHERRY DOGWOOD	CORNUS MAS 'SAFRON SENTINEL'	1 1/2" - 2" CAL./ 8-9' HT.	B&B: SINGLE TRUNK, EVEN BRANCHING, VIGOROUS GROWTH	VARIES
SHRUBS					
0	CURLY LEAF PRIVET	LIGUSTRUM JAPONICUM 'RECURVIFOLIUM'	7 GAL	FULL, VIGOROUS GROWTH	3' O.C.
24	RAMAPO 'RUBY'	RHODODENDRON X. 'RAMAPO'	2 GAL	FULL, VIGOROUS GROWTH	VARIES
22	'BLACK KNIGHT' BUTTERFLY BUSH	BUDLEJA LIMVIO 'BLACK KNIGHT'	7 GAL	FULL, VIGOROUS GROWTH	4' O.C.
112	GRUNE KUGEL WESTERN RED CEDAR	THUJA PLICATA 'GRUNE KUGEL'	1 GAL	FULL, VIGOROUS GROWTH	4' O.C.
0	HEIRLOOM ROSES WHITE MEDIUMLAND	ROSA X 'MEDIUMLAND'	1 GAL	FULL, VIGOROUS GROWTH	VARIES
12	SPRING BOUQUET VIBURNUM	VIBURNUM TILUS 'COMPACTUM'	7 GAL	FULL, VIGOROUS GROWTH	3' O.C.
97	SOFT TOUCH JAPANESE HOLLY	ILEX CHENNA 'SOFT TOUCH'	3 GAL	FULL, VIGOROUS GROWTH	3' O.C.
12	'RUBY' LOROPETALUM	LOROPETALUM CHINENSE 'RUBY'	3 GAL	FULL, VIGOROUS GROWTH	3' O.C.
GROUNDCOVERS / GRASSES & SEASONAL COLOR					
180	PLANT JOHNNIE	TRACHELOSPERMUM ASHITOMI	4" POT	FULL, VIGOROUS GROWTH, SPREADING	12" O.C.
0	ROSE QUEEN BISHOP'S HAT	EPIMEDIUM GRANDIFOLIUM 'ROSE QUEEN'	1 GAL	FULL, VIGOROUS GROWTH, SPREADING	18" O.C.
0	KARL FOERSTER FEATHER REED GRASS	CAULMASGROSISTIS X ACUTIFOLIA 'KARL FOERSTER'	2 GAL	FULL, VIGOROUS GROWTH	18" O.C.
0	SEASONAL AND / OR PERENNIAL COLOR		4" POT - 1 GAL	FULL, VIGOROUS GROWTH	VARIES
LAWN					
LAWN	LAWN	LAWN	LAWN	LAWN	LAWN

PLANT SCHEDULE		B
NO SCALE		L-1.1



LANDSCAPE NOTES:

- THE LANDSCAPE CONTRACTOR SHALL HAVE A SOILS FERTILITY TEST DONE WITH RECOMMENDATIONS. FOR BID PURPOSES PLANTING AREAS SHALL RECEIVE PER 1000 SQ.FT.: 6 CU.YDS. OF ROCK MULCH, 10 LBS. OF 15-15-15 FERTILIZER TILLED INTO THE TOP 6" OF SOIL. ADJUSTMENTS TO THE CONTRACT SHALL BE MADE BASED ON THE RECOMMENDATIONS OF THE FERTILITY TEST. EXCEPTION: PLANTING AREAS TO RECEIVE 12" OR MORE OF PLANTING MEDIUM DO NOT REQUIRE A SOIL FERTILITY TEST.
- PLACE A MINIMUM OF 18" OF GROWING MEDIUM IN ALL LANDSCAPE AREAS THAT HAVE BEEN OVER EXCAVATED. SEE DETAIL 1403, SHEET L-1.1 FOR GROWING MEDIUM.
- AFTER PLANTS AND GROUND COVERS ARE PLANTED, BEFORE APPLICATION OF TOP DRESSING, APPLY RONSSTAR PRE-EMERGENCE WEED KILLER PER MANUFACTURER'S DIRECTIONS.
- ALL SHRUB AREAS SHALL HAVE A WEED BARRIER MAT INSTALLED PRIOR TO PLACING THE TOP DRESSING.
- APPLY TOP DRESSING OF 2" OF ROCK MULCH AFTER APPLICATION OF PRE-EMERGENT.
- LANDSCAPE CONTRACTOR SHALL GUARANTEE PLANTS FOR 60 DAYS AND TREES FOR 1 YEAR FROM THE DATE OF FINAL ACCEPTANCE.
- LANDSCAPE CONTRACTOR IS RESPONSIBLE FOR FINAL GRADING AND DRAINAGE IN ALL LANDSCAPED AREAS. FINISHED GRADES IN PLANTER AREAS SHALL BE INSTALLED SO THAT THEY ARE 1" LOWER THAN THE TOP OF THE ADJACENT SIDEWALK OR CURB.
- PRIOR TO FINAL ACCEPTANCE THE LANDSCAPE CONTRACTOR SHALL PROVIDE TO OWNER OR OWNER'S AGENT THE ORIGINAL DELIVERY TAGS OF ALL PLANT MATERIALS, FERTILIZER, HUMUS, TOP DRESSING AND PRE-EMERGENCE WEED KILLER.
- AFTER WRITTEN FINAL ACCEPTANCE BY THE OWNER, A MAINTENANCE PERIOD OF 60 DAYS WILL COMMENCE. AT THE END OF THE MAINTENANCE PERIOD ANY UNHEALTHY PLANTS SHALL BE REPLACED. AT THE END OF TREE GUARANTEE PERIOD ANY UNHEALTHY TREES SHALL BE REPLACED.
- EXISTING TREES SHOWN ARE TO REMAIN AS NOTED. THE CONTRACTOR SHALL TAKE MEASURES TO MAINTAIN THE HEALTH OF THE TREES. AT A MINIMUM THE DRIP LINE SHALL BE TAPED OFF AND THE AREA INSIDE THE TAPE SHALL BE LEFT UNDISTURBED DURING DEMOLITION AND CONSTRUCTION.
- PLANTING AREAS TO RECEIVE SOD SHALL HAVE LIME APPLIED AT THE RATE OF 50 POUNDS PER 500 SQUARE FEET AND TILLED INTO THE TOP 6" OF SOIL.
- ALL PLANTING AREAS TO BE WATERED BY TIMER ACTIVATED IRRIGATION SYSTEM. TURF AREAS TO BE SPRINKLED, SHRUBS AND TREES TO BE DRIPPED. IRRIGATION SYSTEM IS DESIGN BUILD BY GENERAL CONTRACTOR.
- SEE DETAILS 1401 AND 1402, SHEET L-1.1 FOR SHRUB AND TREE PLANTING REQUIREMENTS.
- ALL LANDSCAPE AREAS THAT DO NOT CONTAIN SHRUBS OR GROUNDCOVER SHALL BE PLANTED WITH SOD INSTALLED PER THE PLANT SCHEDULE REQUIREMENTS.
- SEE SHEET L-2.0 FOR IRRIGATION SLEEVE LOCATIONS AND IRRIGATION SYSTEM REQUIREMENTS.
- PLANT SCHEDULE INDICATES QUANTITY OF NEW PLANTINGS ONLY. OTHER PLANTS LISTED ARE EXISTING AND SHOWN FOR REFERENCE.
- ALL TREES, SHRUBS AND GROUNDCOVER SHALL BE HEALTHY GROWN NURSERY STOCK. ALL STOCK SHALL BE FREE OF INSECTS, DISEASES, MECHANICAL INJURY AND OTHER OBJECTIONABLE FEATURES WHEN PLANTED. TREES SHALL HAVE A SINGLE TRUNK, A WELL DEVELOPED LEADER WITH TOPS AND ROOTS CHARACTERISTIC OF THE CULTIVAR OR VARIETY AND MEET ANSI STANDARD Z60.1.
- SEE PLANT SCHEDULE, DETAIL B, THIS SHEET.
- NONE OF THE EXISTING TREES TO REMAIN ARE SIGNIFICANT IN EITHER SPECIES OR SIZE. GIVEN THEIR SIZE AND LOCATION NEXT TO OVERHEAD POWER FACILITIES ONE OR MORE TREES MAY NEED TO BE REMOVED FOR CONSTRUCTION. IF THIS IS THE CASE IT IS RECOMMENDED THAT A REPLACEMENT COLUMNAR NORWEGIAN MAPLE BE PLANTED ON SITE AND A STREET TREE MATCHING THOSE SPECIFIED ON THE PLAN BE PLANTED IN THE ROW.

MAINTENANCE NOTES:

- AERATE AND DE-THATCH TURF AREAS ONCE A YEAR.
- REPLENISH MULCH IN THE SHRUB BEDS ON AN ANNUAL BASIS.
- FERTILIZE TURF, GROUNDCOVER AND SHRUB BEDS WITH APPROPRIATE FERTILIZER ANNUALLY AND WHEN NEEDED.
- PRUNE SHRUBS AS NECESSARY TO ALLOW FULL PERFORMANCE OF IRRIGATION SYSTEM AND PROVIDE SAFETY TO PEDESTRIANS AND VEHICLES.
- CONTROL WEEDS IN LANDSCAPED AREAS BY REMOVING AS OFTEN AS NECESSARY.
- MAINTAIN GRASS HEIGHT OF 3-4". MOW WEEKLY OR MORE OFTEN TO NOT REMOVE MORE THAN 1/3 OF THE GRASS HEIGHT DURING MOWING OPERATIONS.



PANDA EXPRESS, INC.  
1683 Walnut Grove Ave.  
Rosemead, California  
91770  
Telephone: 626.799.9898  
Facsimile: 626.372.8288

All ideas, designs, arrangements and plans indicated or represented by this drawing are the property of Panda Express Inc. and were created for use on this specific project. None of these ideas, designs, arrangements or plans may be used by or disclosed to any person, firm, or corporation without the written permission of Panda Express Inc.

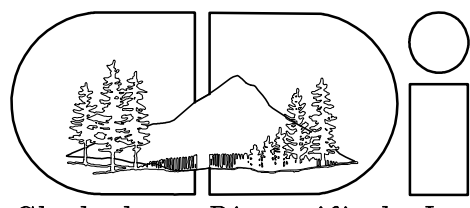
REVISIONS:


ISSUE DATE:

LAND USE REVIEW	5/25/2022

DRAWN BY: CHEHALEM DIVERSIFIED, INC.

PANDA PROJECT #: S8-23-D22360  
ARCH PROJECT #: 2203  
ENGR PROJECT #: 1603-10



Chehalem Diversified, Inc.  
2800 E. 9th Street, Ste. 700  
Newberg, OR 97132-3575  
(503) 538-0337



EXPIRES: 6/30/2024

Panda Express  
w/ Drive Through

LANCASTER DRIVE NE & WEATHERS STREET NE  
SALEM, OR 97301

Panda Next Generation 2600

L-1.0

CIVIL  
LANDSCAPE PLAN

LANDSCAPE PLAN 1  
Scale 1" = 20'  
L-1.0

NOTES A  
NO SCALE L-1.0