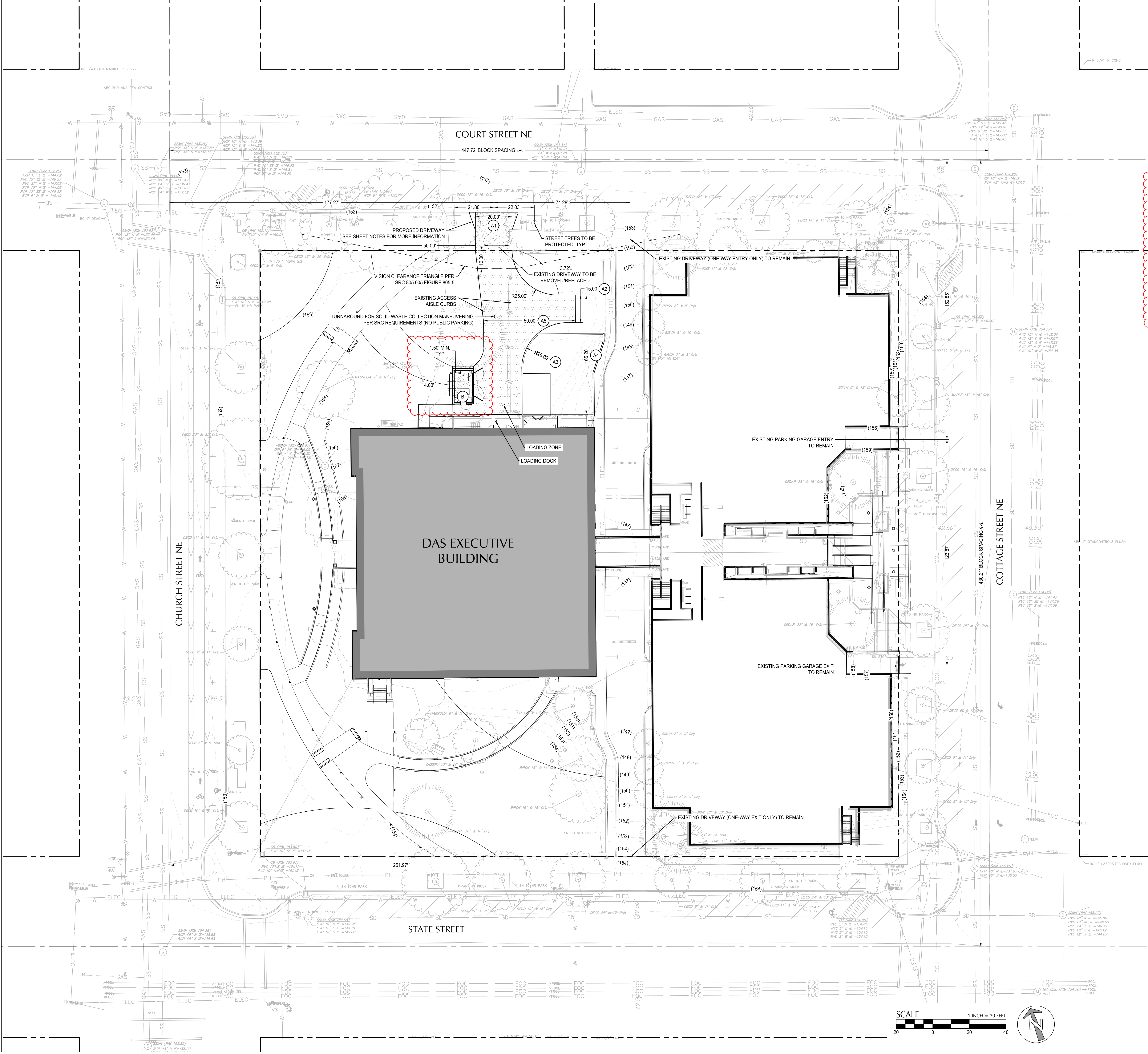


Copyright protected. See Design Agreement. For use on this project only. Unauthorized reproduction of any part of this material is prohibited.

SERA Design and Architecture, Inc.



### SHEET NOTES

- THE PROPOSED WIDENED DRIVEWAY IS NECESSARY TO ACCOMMODATE THE TRASH HAULER TURNAROUND AND WIDTH REQUIREMENTS PER SRC SECTION 800.055 "SOLID WASTE SERVICE AREAS" FIGURE 800-10 AND AS DIMENSIONED.
- DRIVEWAY SHALL BE INSTALLED PER CITY OF SALEM STD DETAIL NO.302 FOR DRIVEWAYS WITH PROPERTY LINE SIDEWALKS.
- PROPOSED DRIVEWAY LOCATION IS WIDENED TO THE WEST TO AVOID EXISTING WATER UTILITIES AND STREET TREES TO REMAIN.

### SHEET LEGEND

- PROPERTY LINE
- CENTERLINE

### KEYNOTES

- A# SOLID WASTE SERVICE AREA ACCESS DIMENSIONS PER FIGURE 800-10: VEHICLE OPERATION AREA PARALLEL TO FRONT OF ENCLOSURE
- A1 20-FT ACCESS WIDTH
  - A2 15-FT WIDTH AT TURNAROUND
  - A3 25-FT CURB RADI AT TURNAROUND (TYPICAL)
  - A4 50-FT (MIN.) OFFSET FROM END OF ACCESS AISLE TO TURNAROUND CURB
  - A5 50-FT TURNAROUND LENGTH PERPENDICULAR TO ACCESS AISLE
- B TRASH ENCLOSURE:
- 4" CONCRETE PAD WITH RECEPTACLE CLEARANCES PER SRC 800.055
  - PAD SLOPE 2% TYPICAL
  - ROOF DRAINAGE PIPED TO STORMWATER SYSTEM
  - INTERIOR FLOOR DRAIN WITH P-TRAP PIPED TO SANITARY SEWER SYSTEM

SERA

ARCHITECTURE  
URBAN DESIGN + PLANNING  
INTERIOR DESIGN

PORTLAND/OAKLAND  
SERADESIGN.COM

PRELIMINARY  
NOT FOR CONSTRUCTION

kpff

111 SW Fifth Ave., Suite 2600  
Portland, OR 97204  
O: 503.542.3860  
F: 503.274.4681  
www.kpff.com

## EXECUTIVE BUILDING RENOVATION

DEPARTMENT OF ADMINISTRATIVE SERVICES  
155 Cottage St NE, Salem, OR 97301

REVISIONS

CHECKED BY: NP/ML  
ISSUE DATE: 06/24/2022  
PROJECT NO: 2101032

DRIVEWAY  
APPROACH PLAN  
LU-C12

SITE PLAN REVIEW