

### DOOR TYPES

1. SHOWN ON SCHEDULE INDICATES TYPICAL
2. TYPICAL
3. CONSTRUCTION
4. MATERIAL/FINISH
5. GLASSPANEL - CLEAR WIRE TP - TEMPERED GLASS
6. 20 MINUTES FIRE RATING IN MINUTES FOR OPENING
7. TYPICAL FRAMES SHOWN - NUMBER OF HARDWARE GROUP
8. NUMBER REFERS TO HARDWARE GROUP OF HARDWARE SCHEDULE

### HARDWARE SCHEDULE

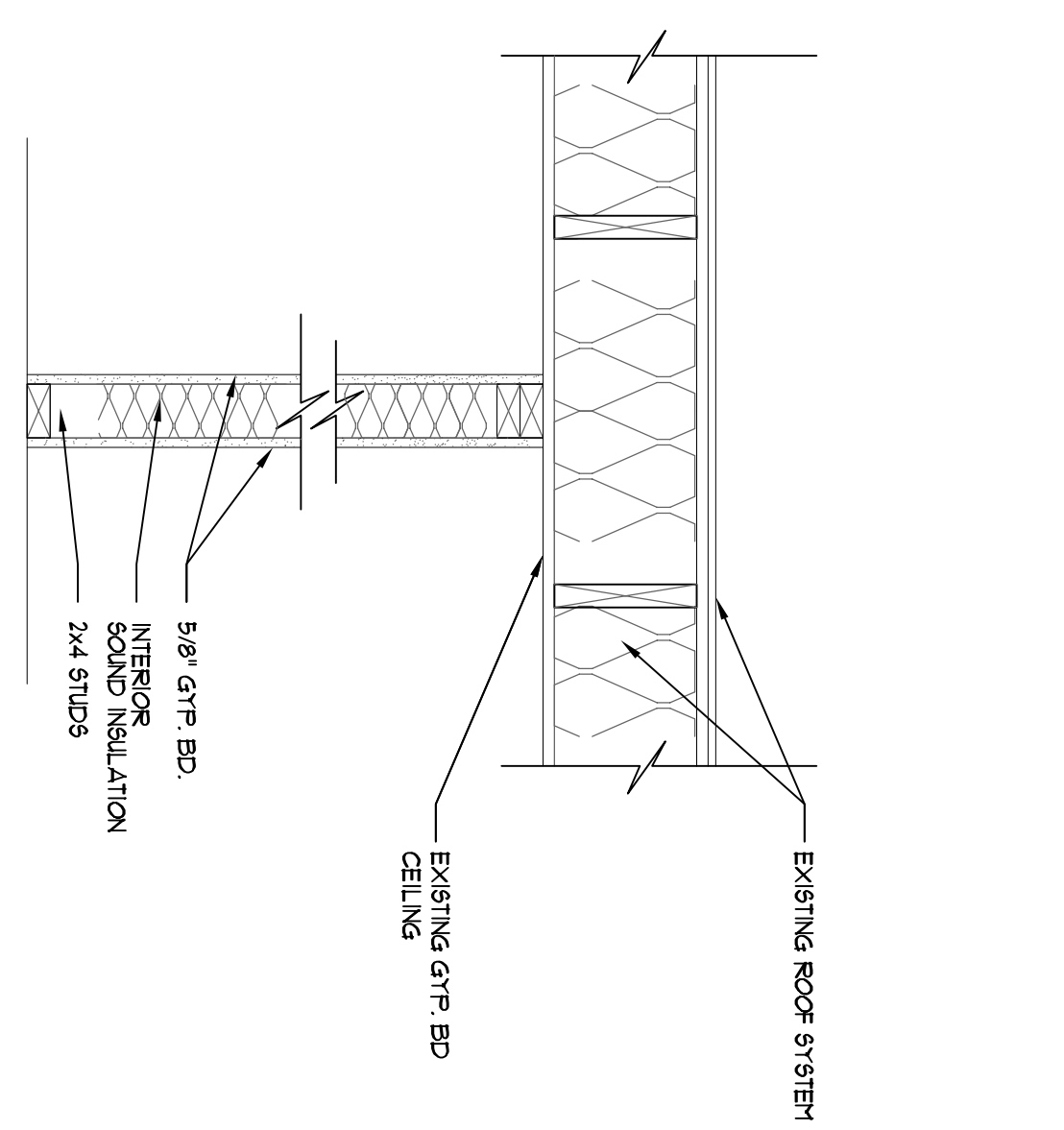
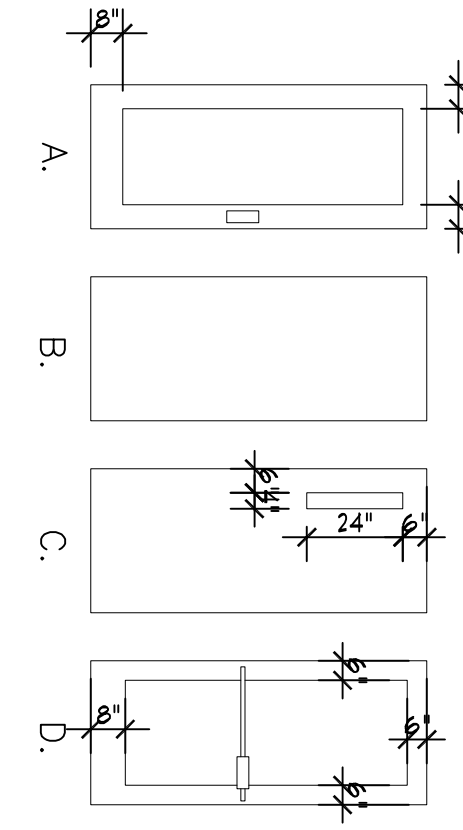
NO.	DESCRIPTION	GROUP
1	DOOR	GROUP 1
2	DOOR	GROUP 2
3	DOOR	GROUP 3
4	DOOR	GROUP 4
5	DOOR	GROUP 5
6	DOOR	GROUP 6
7	DOOR	GROUP 7
8	DOOR	GROUP 8

### DOOR SCHEDULE

NO.	SIZE	TYPE	CONST.	FINISH	GLASS	RATING	FRAME	HWDR
101	EXISTING	(2)	---	---	---	---	---	---
102	EXISTING	(3)	---	---	---	---	---	---
103	EXISTING	(4)	---	---	---	---	---	---
104	EXISTING TO BE REMOVED	(5)	---	---	---	---	---	---
105	3'-0"x7'-0"x1 1/2" / 4"	(6)	---	---	---	---	---	---
106	3'-0"x7'-0"x1 1/2" / 4"	(7)	---	---	---	---	---	---
107	3'-0"x7'-0"x1 1/2" / 4"	(8)	---	---	---	---	---	---
108	4'-0"x4'-0"x1 1/2" / 4"	(9)	---	---	---	---	---	---

### ROOM FINISH SCHEDULE

NO.	ROOM	FLOOR	BASE	WALLS	CEILING
101	LAUNDRY	VCT	SHT VINYL (EXISTING)	TILE	TILE
102	RESTROOM	WOOD	BRUSHMAT	CONC. SLAB	WOOD 4"
103	KIDS AREA	WOOD	VINYL 4"	WOOD 6"	NONE
104	OFFICE	G.B. (PAINT)	G.B. (PAINT)	TILE	G.B. (EPOXY)
105	SERVICE AREA	UNFINISHED STRUCTURE	UNFINISHED STRUCTURE	UNFINISHED STRUCTURE	UNFINISHED STRUCTURE

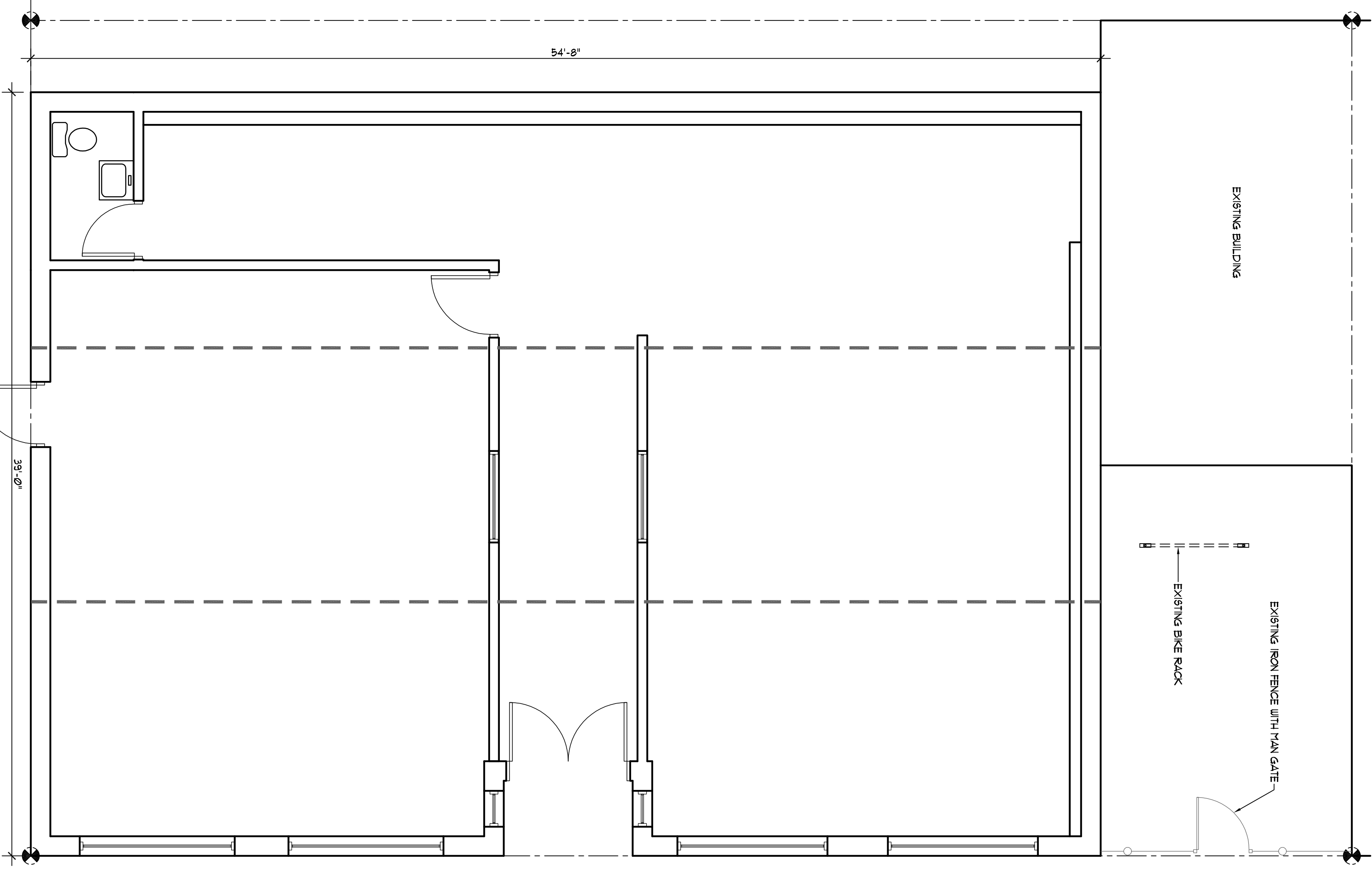


1 TYPICAL INTERIOR WALL DETAIL  
 SCALE: 1" = 1'-0"

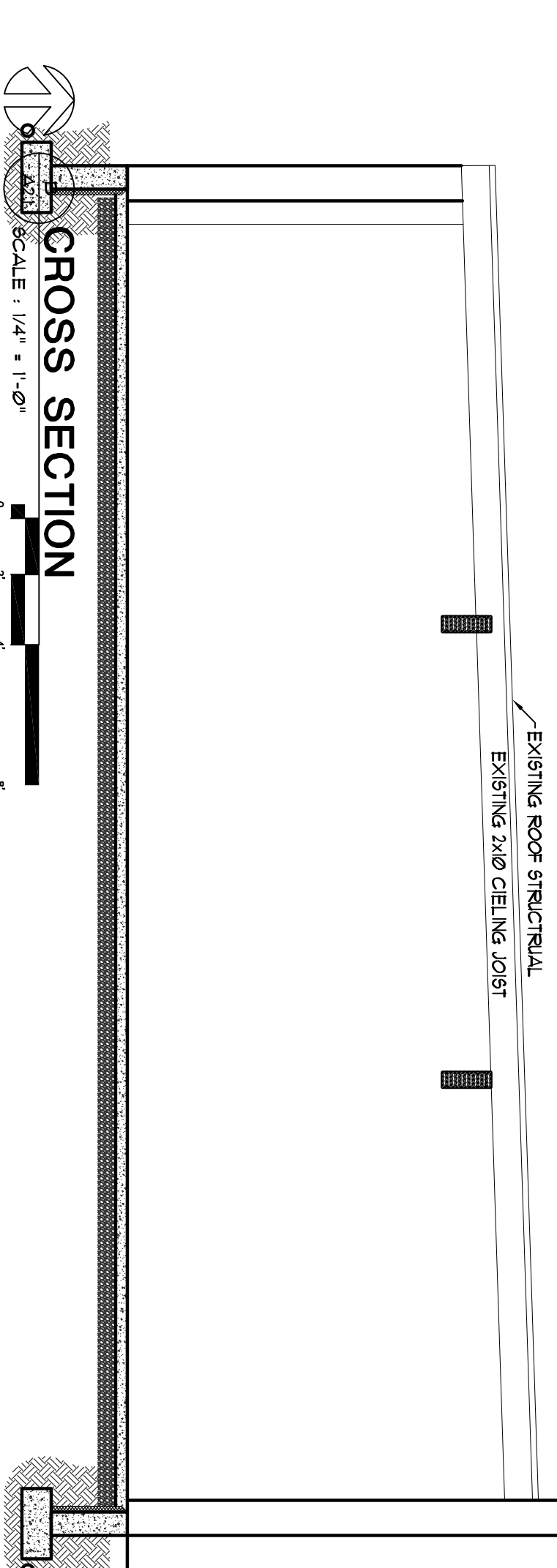
### SYMBOL KEY

- PROPOSED**
- FIRE EXTINGUISHER (1 PER 2000) (1) RECD KIDDE DRY CHEMICAL FIRE EXTINGUISHER UL CLASSIFICATION EXTINGUISHER 47 AFE 1 RECD 1 OR 2
  - EXIT LIGHT - CORBO WITH BATTERY BACKUP
  - LITHONIA QUANTUM BESS 100 DDC 6 EXIT-UNIT CORBO BACK MOUNT WITH BATTERY BACKUP
  - EDGE66 LIGHT - WITH BATTERY BACKUP
  - LED EDGE66-UNIT BACK MOUNT WITH BATTERY BACKUP
  - LITHONIA ENJO LED EDGE66-UNIT BACK MOUNT WITH BATTERY BACKUP
- EXISTING**
- EXISTING EXIT LIGHT - CORBO WITH BATTERY BACKUP
  - EXISTING EXIT LIGHT - WITH BATTERY BACKUP
  - EXISTING EDGE66 LIGHT - WITH BATTERY BACKUP
  - EXISTING FIRE EXTINGUISHER
- WALL SCHEDULE**
- PROPOSED WALL
  - EXIST WALL
  - DEM'D WALL
- REVISION TAGS**
- 100 - ROOM NAME
  - 110 - ROOM NUMBER
  - 120 - SQUARE FOOTAGE
  - 130 - OCCUPANT LOAD FACTOR
  - 140 - ROOM NAME
  - 150 - ROOM NUMBER

### FLOOR PLAN



A FLOOR PLAN  
 SCALE: 1/4" = 1'-0"



CROSS SECTION  
 SCALE: 1/4" = 1'-0"

### TABLE 2902.1 MINIMUM NUMBER OF REQUIRED PLUMBING FIXTURES

CLASSIFICATION	DESCRIPTION	WATER CLOSETS (URINALS MAY REPLACE water closets at a ratio of 1 urinal per 2/3 water closet)	LAVATORIES	DRINKING FOUNTAINS
Educational	1 Educational facilities	Male 1 per 50	Female 1 per 50	1 per floor

1. The fixtures shown are based on one fixture being the minimum required for the number of persons indicated or any fraction of the number of persons indicated. The number of occupants shall be determined by this code.
  2. A drinking fountain need not be provided in a drinking or dining establishment.
- Code Summary**
- Code: OSSC 2019
- Construction: VB
- Occupancy: E
- Sprinkler: NO
- Allowable area: NS 9,500 SF > 9,500 SF
- Occupants: 50 or less
- Zoning**
- Zone: MC-II
- Use: MFC (P)
- Parking**
- Sec. 806.01.0 - Proximity of on-street parking to use or actively served
- (b) Nonresidential zones: Within commercial, mixed-use, public, and industrial and employment zones, other than the CB, WSCB, and SWMU zones, required off-street parking may be located within 500 feet of the development site containing the use or activity. It serves
- Bike Parking** 4 spaces Table 806-9 4 existing space to north of building in fence yard. Within 50' of front door

### DRAWING NOTES

1. ILLUMINATION: EMERGENCY POWER THE POWER SUPPLY SHALL BE PROVIDED BY THE PREMISES ELECTRICAL SUPPLY.
2. EXIT ACCESS CORRIDORS AND AISLES IN ROOMS AND SPACES WHICH REQUIRE TWO OR MORE MEANS OF EGRESS.
3. EXTERIOR EGRESS COMPONENTS AT OTHER THAN THE LEVEL OF EXIT DISCHARGE IS REQUIRED TO HAVE TWO OR MORE EXITS DISCHARGE ELEMENTS AS PERMITTED IN SECTION 1023.1 IN BUILDINGS REQUIRED TO HAVE TWO OR MORE EXITS.
4. THE PORTION OF THE EXTERIOR EXIT DISCHARGE IMMEDIATELY ADJACENT TO EXIT DISCHARGE DOORWAYS IN BUILDINGS REQUIRED TO HAVE TWO OR MORE EXITS.

