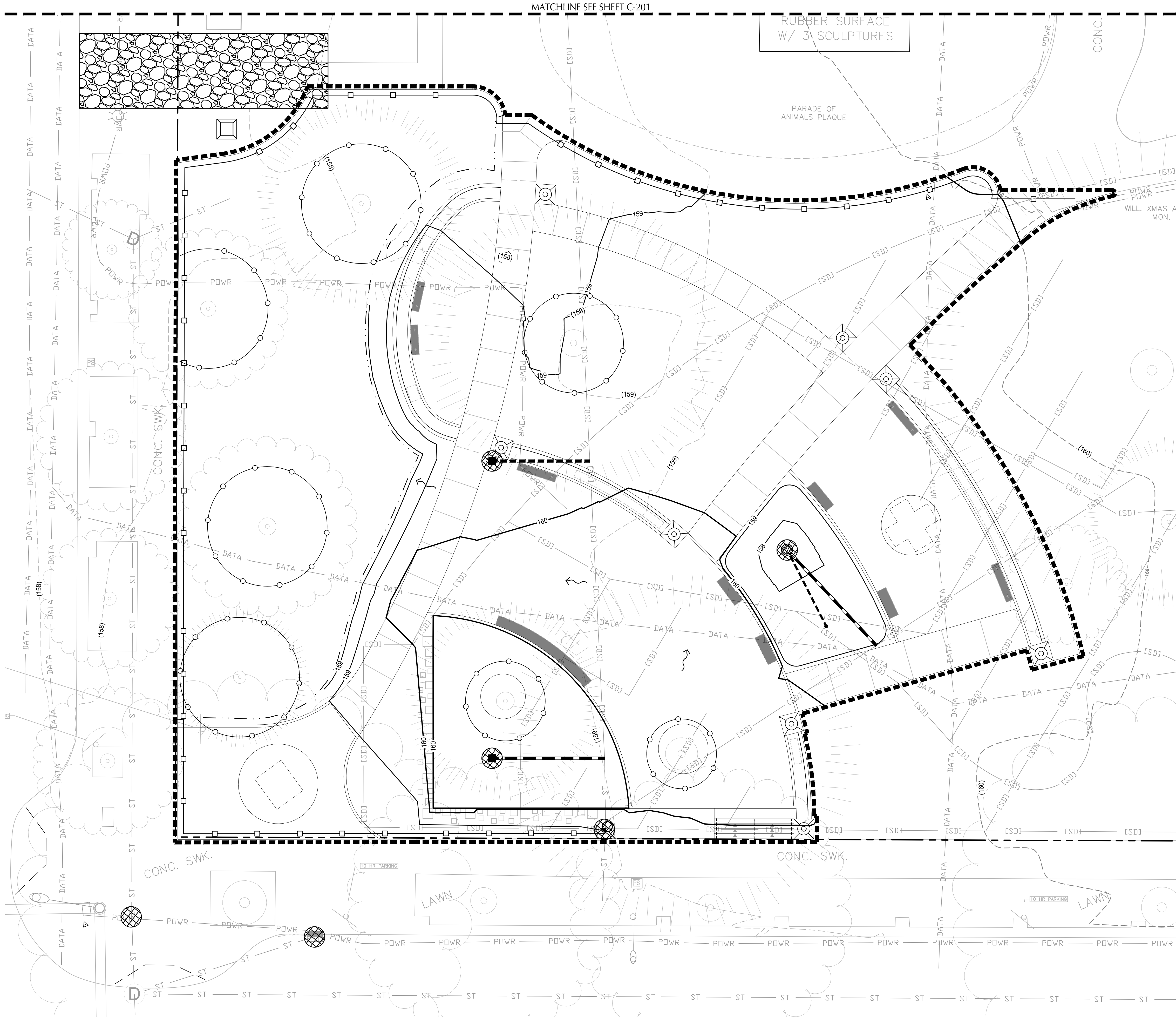


\\CIVIL\PD\1\CIVIL-PROJECTS\C\2022\12100367-OREGON-VIETNAM-WAR-MEMORIAL\CAD\PL\012100367-C-400-ESOP.DWG



SHEET NOTES

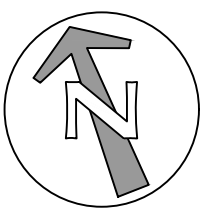
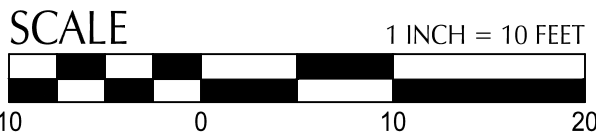
1. APPROVAL OF THIS EROSION/SEDIMENTATION CONTROL (ESC) PLAN DOES NOT CONSTITUTE AN APPROVAL OF PERMANENT ROAD OR DRAINAGE DESIGN (E.G. SIZE AND LOCATION OF ROADS, RESTRICTORS, CHANNELS, RETENTION FACILITIES, UTILITIES, ETC.).
2. THE IMPLEMENTATION OF THESE ESC PLANS AND THE CONSTRUCTION, MAINTENANCE, REPLACEMENT, AND UPGRADING OF THESE ESC FACILITIES IS THE RESPONSIBILITY OF THE CONTRACTOR UNTIL ALL CONSTRUCTION IS COMPLETED AND APPROVED AND PERMANENT VEGETATION/LANDSCAPING IS ESTABLISHED.
3. THE BOUNDARIES OF THE CLEARING LIMITS SHOWN ON THIS PLAN SHALL BE CLEARLY FLAGGED IN THE FIELD PRIOR TO CONSTRUCTION. DURING THE CONSTRUCTION PERIOD, NO DISTURBANCE BEYOND THE FLAGGED CLEARING LIMITS SHALL BE PERMITTED. THE FLAGGING SHALL BE MAINTAINED BY THE CONTRACTOR FOR THE DURATION OF CONSTRUCTION.
4. THE ESC FACILITIES SHOWN ON THIS PLAN MUST BE CONSTRUCTED IN CONJUNCTION WITH ALL CLEARING AND GRADING ACTIVITIES, AND IN SUCH A MANNER AS TO ENSURE THAT SEDIMENT AND SEDIMENT LADEN WATER DO NOT ENTER THE DRAINAGE SYSTEM, ROADWAYS, OR VIOLATE APPLICABLE WATER STANDARDS.
5. THE ESC FACILITIES SHOWN ON THIS PLAN ARE THE MINIMUM REQUIREMENTS FOR ANTICIPATED SITE CONDITIONS. DURING THE CONSTRUCTION PERIOD, THESE ESC FACILITIES SHALL BE UPGRADED AS NEEDED FOR UNEXPECTED STORM EVENTS AND TO ENSURE THAT SEDIMENT AND SEDIMENT LADEN WATER DO NOT LEAVE THE SITE.
6. THE ESC FACILITIES SHALL BE INSPECTED DAILY BY THE CONTRACTOR AND MAINTAINED AS NECESSARY TO ENSURE THEIR CONTINUED FUNCTIONING.
7. THE ESC FACILITIES ON INACTIVE SITES SHALL BE INSPECTED AND MAINTAINED A MINIMUM OF ONCE A MONTH OR WITHIN THE 24 HOURS FOLLOWING A STORM EVENT.
8. AT NO TIME SHALL MORE THAN ONE FOOT OF SEDIMENT BE ALLOWED TO ACCUMULATE WITHIN A TRAPPED CATCH BASIN. ALL CATCH BASINS AND CONVEYANCE LINES SHALL BE CLEANED PRIOR TO PAVING. THE CLEANING OPERATION SHALL NOT FLUSH SEDIMENT LADEN WATER INTO THE DOWNSTREAM SYSTEM.
9. STABILIZED CONSTRUCTION ENTRANCES SHALL BE INSTALLED AT THE BEGINNING OF CONSTRUCTION AND MAINTAINED FOR THE DURATION OF THE PROJECT. ADDITIONAL MEASURES MAY BE REQUIRED TO ENSURE THAT ALL PAVED AREAS ARE KEPT CLEAN FOR THE DURATION OF THE PROJECT.

CONSTRUCTION SEQUENCING & STORM FACILITY NOTES

1. DEMOLITION WILL REMOVE IMPERVIOUS SURFACES. UNTIL NEW IMPERVIOUS SURFACES ARE INSTALLED, STORMWATER WILL BE INFILTRATED IN PLACE. CONTRACTOR TO INSTALL EROSION CONTROL MEASURES AS NEEDED TO PREVENT SEDIMENT LADEN RUNOFF FROM LEAVING THE SITE.
 2. THE STORMWATER (VEGETATED INFILTRATION BASIN/FLOW-THROUGH PLANTER/RAIN GARDEN) ARE PERMANENT STORMWATER FACILITIES AND MUST BE PROTECTED FROM SILTATION AND SCOURING DURING THE CONSTRUCTION PHASE. DURING CONSTRUCTION, STORMWATER MAY BE ROUTED TO THE STORMWATER FACILITIES PROVIDED EROSION CONTROL MEASURES LISTED BELOW ARE IMPLEMENTED:
 - INSTALL PROTECTIVE JUTE MATTING OR FILTER FABRIC OVER BOTTOM AND SIDE SLOPES OF FACILITY.
 - OVERFLOW INLETS WITHIN THE FACILITY MUST RECEIVE INLET PROTECTION PER DETAIL 10/C-500.
 - PRIOR TO PLANTING, THE PROTECTIVE MATTING SHOULD BE REMOVED AND THE TOP 6" OF GROWING MEDIUM SHALL BE TILLED TO CONFIRM SOIL MIX MEETS DESIGN GRADATIONS AND SOIL DRAINS AS DESIGNED PRIOR TO PLANTING.
 - INSTALL PEA GRAVEL MULCH AS SOON AS POSSIBLE TO PROTECT SOIL.
- ATTENTION!!!:** RAIN EVENTS THAT SCOUR EXPOSED SOIL REQUIRE ADDITIONAL TILLING OR POTENTIALLY REPLACEMENT PRIOR TO PLACEMENT OF PEA GRAVEL AND PLANTING TO ENSURE STORM FACILITY FUNCTIONS DRAINS AS DESIGNED.

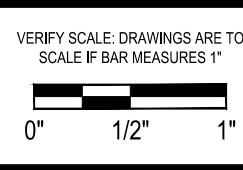
SHEET LEGEND

	PROPERTY LINE
	EX. CONTOUR MINOR
	EX. CONTOUR MAJOR
	PROP. CONTOUR MINOR
	PROP. CONTOUR MAJOR
	EXTENT OF WORK
	SEDIMENT CONTROL FENCE. (SHOWN OFFSET FOR CLARITY).
	INLET PROTECTION
	DRAINAGE FLOW DIRECTION
	TREE PROTECTION FENCE
	CONCRETE WASHOUT
	CONSTRUCTION ENTRANCE



kpff
111 SW Fifth Ave., Suite 2600
Portland, OR 97214
O: 503.542.3860
F: 503.274.4681
www.kpff.com

GREEN WORKS
LANDSCAPE ARCHITECTURE
ENVIRONMENTAL DESIGN
110 SE Main St, Suite 100
Portland, OR 97214
Ph: 503.222.5612
Fax: 503.222.2283
Email: info@greenworkspc.com



Project: **Vietnam War Memorial**

Wilson Park
Oregon State Capital Grounds
Salem, OR 97301

Submittal: 30% Construction Documents

Sheet Title:

**EROSION AND
SEDIMENT CONTROL
PLAN**

© GREENWORKS, P.C.
2022. ALL RIGHTS RESERVED

THESE DRAWINGS ARE THE PROPERTY OF GREENWORKS, P.C. AND ARE NOT TO BE USED OR REPRODUCED IN ANY MANNER, EXCEPT WITH THE PRIOR WRITTEN PERMISSION OF GREENWORKS, P.C.

Date: 06/30/2022

Revisions:

Drawn By: AB

Checked By: JA

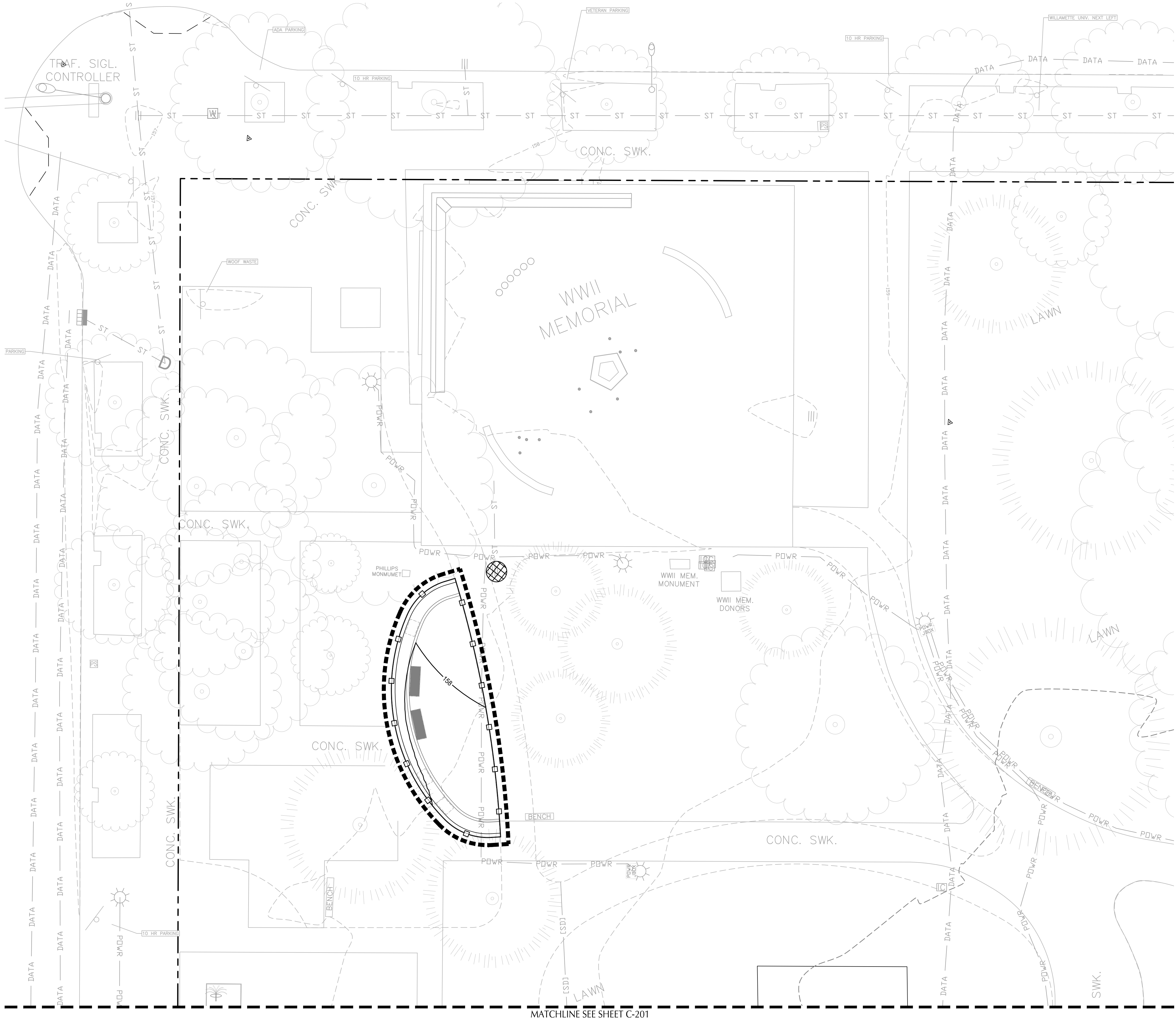
Job No. 190124.1

Approved: CV

C-401

Sheet No. of X

\\CIVIL\PD\1\CIVIL-PROJECTS\C-P\2021\2100387-OREGON-VIETNAM-WAR-MEMORIAL\CAD\PLT\2100387-C-400-ESOP.DWG



SHEET NOTES

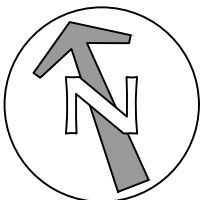
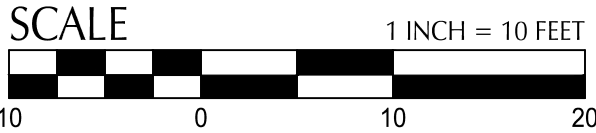
1. APPROVAL OF THIS EROSION/SEDIMENTATION CONTROL (ESC) PLAN DOES NOT CONSTITUTE AN APPROVAL OF PERMANENT ROAD OR DRAINAGE DESIGN (E.G. SIZE AND LOCATION OF ROADS, RESTRICTORS, CHANNELS, RETENTION FACILITIES, UTILITIES, ETC.).
2. THE IMPLEMENTATION OF THESE ESC PLANS AND THE CONSTRUCTION, MAINTENANCE, REPLACEMENT, AND UPGRADING OF THESE ESC FACILITIES IS THE RESPONSIBILITY OF THE CONTRACTOR UNTIL ALL CONSTRUCTION IS COMPLETED AND APPROVED AND PERMANENT VEGETATION/LANDSCAPING IS ESTABLISHED.
3. THE BOUNDARIES OF THE CLEARING LIMITS SHOWN ON THIS PLAN SHALL BE CLEARLY FLAGGED IN THE FIELD PRIOR TO CONSTRUCTION. DURING THE CONSTRUCTION PERIOD, NO DISTURBANCE BEYOND THE FLAGGED CLEARING LIMITS SHALL BE PERMITTED. THE FLAGGING SHALL BE MAINTAINED BY THE CONTRACTOR FOR THE DURATION OF CONSTRUCTION.
4. THE ESC FACILITIES SHOWN ON THIS PLAN MUST BE CONSTRUCTED IN CONJUNCTION WITH ALL CLEARING AND GRADING ACTIVITIES, AND IN SUCH A MANNER AS TO ENSURE THAT SEDIMENT AND SEDIMENT LADEN WATER DO NOT ENTER THE DRAINAGE SYSTEM, ROADWAYS, OR VIOLATE APPLICABLE WATER STANDARDS.
5. THE ESC FACILITIES SHOWN ON THIS PLAN ARE THE MINIMUM REQUIREMENTS FOR ANTICIPATED SITE CONDITIONS. DURING THE CONSTRUCTION PERIOD, THESE ESC FACILITIES SHALL BE UPGRADED AS NEEDED FOR UNEXPECTED STORM EVENTS AND TO ENSURE THAT SEDIMENT AND SEDIMENT LADEN WATER DO NOT LEAVE THE SITE.
6. THE ESC FACILITIES SHALL BE INSPECTED DAILY BY THE CONTRACTOR AND MAINTAINED AS NECESSARY TO ENSURE THEIR CONTINUED FUNCTIONING.
7. THE ESC FACILITIES ON INACTIVE SITES SHALL BE INSPECTED AND MAINTAINED A MINIMUM OF ONCE A MONTH OR WITHIN THE 24 HOURS FOLLOWING A STORM EVENT.
8. AT NO TIME SHALL MORE THAN ONE FOOT OF SEDIMENT BE ALLOWED TO ACCUMULATE WITHIN A TRAPPED CATCH BASIN. ALL CATCH BASINS AND CONVEYANCE LINES SHALL BE CLEANED PRIOR TO PAVING. THE CLEANING OPERATION SHALL NOT FLUSH SEDIMENT LADEN WATER INTO THE DOWNSTREAM SYSTEM.
9. STABILIZED CONSTRUCTION ENTRANCES SHALL BE INSTALLED AT THE BEGINNING OF CONSTRUCTION AND MAINTAINED FOR THE DURATION OF THE PROJECT. ADDITIONAL MEASURES MAY BE REQUIRED TO ENSURE THAT ALL PAVED AREAS ARE KEPT CLEAN FOR THE DURATION OF THE PROJECT.

CONSTRUCTION SEQUENCING & STORM FACILITY NOTES

1. DEMOLITION WILL REMOVE IMPERVIOUS SURFACES. UNTIL NEW IMPERVIOUS SURFACES ARE INSTALLED, STORMWATER WILL BE INFILTRATED IN PLACE. CONTRACTOR TO INSTALL EROSION CONTROL MEASURES AS NEEDED TO PREVENT SEDIMENT LADEN RUNOFF FROM LEAVING THE SITE.
 2. THE STORMWATER (VEGETATED INFILTRATION BASIN/FLOW-THOUGH PLANTER/RAIN GARDEN) ARE PERMANENT STORMWATER FACILITIES AND MUST BE PROTECTED FROM SILTATION AND SCOURING DURING THE CONSTRUCTION PHASE. DURING CONSTRUCTION, STORMWATER MAY BE ROUTED TO THE STORMWATER FACILITIES PROVIDED EROSION CONTROL MEASURES LISTED BELOW ARE IMPLEMENTED:
 - INSTALL PROTECTIVE JUTE MATTING OR FILTER FABRIC OVER BOTTOM AND SIDE SLOPES OF FACILITY.
 - OVERFLOW INLETS WITHIN THE FACILITY MUST RECEIVE INLET PROTECTION PER DETAIL 10/C-500.
 - PRIOR TO PLANTING, THE PROTECTIVE MATTING SHOULD BE REMOVED AND THE TOP 6" OF GROWING MEDIUM SHALL BE TILLED TO CONFIRM SOIL MIX MEETS DESIGN GRADATIONS AND SOIL DRAINS AS DESIGNED PRIOR TO PLANTING.
 - INSTALL PEA GRAVEL MULCH AS SOON AS POSSIBLE TO PROTECT SOIL.
- ATTENTION!!!: RAIN EVENTS THAT SCOUR EXPOSED SOIL REQUIRE ADDITIONAL TILLING OR POTENTIALLY REPLACEMENT PRIOR TO PLACEMENT OF PEA GRAVEL AND PLANTING TO ENSURE STORM FACILITY FUNCTIONS DRAINS AS DESIGNED.

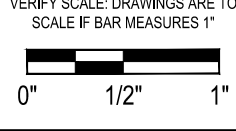
SHEET LEGEND

	PROPERTY LINE	
	EX. CONTOUR MINOR	
	EX. CONTOUR MAJOR	
	PROP. CONTOUR MINOR	
	PROP. CONTOUR MAJOR	
	EXTENT OF WORK	
	SEDIMENT CONTROL FENCE. (SHOWN OFFSET FOR CLARITY).	2 C-501
	INLET PROTECTION	10 C-500
	DRAINAGE FLOW DIRECTION	
	TREE PROTECTION FENCE	9 C-500
	CONCRETE WASHOUT	8 C-500
	CONSTRUCTION ENTRANCE	7 C-500



kpff
111 SW Fifth Ave., Suite 2600
Portland, OR 97204
O: 503.542.3860
F: 503.274.4681
www.kpff.com

GREEN WORKS
LANDSCAPE ARCHITECTURE
ENVIRONMENTAL DESIGN
110 SE Main St, Suite 100
Portland, OR 97214
Ph: 503 222 5612
Fax: 503 222 2283
Email: info@greenworkspc.com



Project: **Vietnam War Memorial**

Wilson Park
Oregon State Capital Grounds
Salem, OR 97301

Submittal: 30% Construction Documents

Sheet Title:

**EROSION AND
SEDIMENT CONTROL
PLAN**

© GREENWORKS, P.C.
2022. ALL RIGHTS RESERVED

THESE DRAWINGS ARE THE PROPERTY OF GREENWORKS, P.C., AND ARE NOT TO BE USED OR REPRODUCED IN ANY MANNER, EXCEPT WITH THE PRIOR WRITTEN PERMISSION OF GREENWORKS, P.C.

Date: 06/30/2022

Revisions:

Drawn By: AB

Checked By: JA

Job No. 190124.1

Approved: CV

C-402

Sheet No. of X