

FINISH SCHEDULE					
ROOM NAME	FLOOR	BASE	WALL	CEILING	
(100) DINING ROOM	T200 24" X 24" TILE	T111 TILE SIZE: T.B.D. T.B.D. TILE SIZE: T.B.D.	P101, P104 T111, T.B.D. WALL COVERING	C1 2' X 2' ARMSTRONG, SEPIA #PN91311 GYB BOARD W/ PAINT P103	03-24-22
(101) SERVING AREA	S1 S2 PLAIN ABRASIVE IN HIGH TRAFFIC AREAS	S1 6" H. CONT. (KITCHEN EQUIPMENT ON 6" NSF APPROVED LEGS)	T.B.D. TILE	C3 GYP BOARD W/ SMOOTH WASHABLE PAINT	
(102) DRIVE-THRU STATION	S1 S2 PLAIN ABRASIVE IN HIGH TRAFFIC AREAS	S1 6" H. CONT. (KITCHEN EQUIPMENT ON 6" NSF APPROVED LEGS)	WP1 FRP PANEL	C2 2' X 4' SUSPENDED GRID WASHABLE VINYL COATED GYB BOARD PANELS	
(103) KITCHEN	S1 S2 PLAIN ABRASIVE IN HIGH TRAFFIC AREAS	S1 6" H. CONT. (KITCHEN EQUIPMENT ON 6" NSF APPROVED LEGS)	WP3 S.S. BEHIND COOK LINE WP1 FRP PANEL	C2 2' X 4' SUSPENDED GRID WASHABLE VINYL COATED GYB BOARD PANELS	
(104) KITCHEN PREP.	S1 S2 PLAIN ABRASIVE IN HIGH TRAFFIC AREAS	S1 6" H. CONT. (KITCHEN EQUIPMENT ON 6" NSF APPROVED LEGS)	WP1 FRP PANEL	C2 2' X 4' SUSPENDED GRID WASHABLE VINYL COATED GYB BOARD PANELS	
(105) WALK-IN COOLER	S1 S2 PLAIN ABRASIVE IN HIGH TRAFFIC AREAS	S.S. / ALUMINUM WITH 3/8" RADIUS	EXT S.S. INT ALUMINUM GALVANIZED S.S.	ALUMINUM GALVANIZED STAINLESS STEEL	
(105A) WALK-IN FREEZER	GALVANIZED STAINLESS STEEL S1 SILIKAL UNDER WIF SUBFLOOR	S.S. / ALUMINUM WITH 3/8" RADIUS	EXT S.S. INT ALUMINUM GALVANIZED S.S.	ALUMINUM GALVANIZED STAINLESS STEEL	
(106) UNISEX RESTROOM	T200 24" X 24" TILE	SCHLUTER	T108 TILE	C3 GYB BOARD W/ P101 SMOOTH WASHABLE PAINT	
(107) UNISEX RESTROOM	T200 24" X 24" TILE	SCHLUTER	T108 TILE	C3 GYB BOARD W/ P101 SMOOTH WASHABLE PAINT	
(108) VESTIBULE	T200 24" X 24" TILE	T.B.D. TILE SIZE: T.B.D.	P104 PAINT GYB BOARD T.B.D. TILE	C3 GYB BOARD W/ P101 SMOOTH WASHABLE PAINT	
(109) NOT USED	-	-	-	-	
(110) EXTERIOR STORAGE	SEALED CONCRETE, SMOOTH FINISH	-	WP1 FRP PANEL	C3 GYB BOARD W/ P101 SMOOTH WASHABLE PAINT	
(111) NOT USED					

DOOR & HARDWARE SCHEDULE										INSTALLED AND FURNISHED BY G.C. UNLESS NOTED OTHERWISE																
NO.	DOOR MATERIAL	SIZE	FRAME	FACED/EDGE	THK.	CORE	LITE	PASSAGE	LOCK/SET	ELECT. MAG-LOCK	WEIGHTY KEYPAD & EXT. BUTTON	PRIVACY	SF. PULL	SF. PUSH	PANIC	BUTT	CONT. PANIC	FLOOR	WALL	THRESHOLD	LATCH GUARD	DET. ALARM	SILENCERS	NO. PLATE	CLOSER	REMARKS

CONTRACTOR TO PURCHASE DOOR HARDWARE & FRAME DIRECTLY FROM PANDA'S NATIONAL ACCOUNT SUPPLIER. SUPPLIER TO PROVIDE ALL STOREFRONT DOOR HARDWARE, P-LAM DOORS & FRAMES AND HM DOORS & FRAMES

CONTACT FOR QUOTING, ORDERING & LOGISTICS
APRIL WALDREN, PROJECT MANAGER
800-887-4307 EXT. 350 PHONE
ApriW@locknet.com, panda@locknet.com

CONTACT FOR GENERAL ACCOUNT NEEDS
ANGIE HAINES, ACCOUNT MANAGER
800-887-4307 EXT. 145 PHONE / 859-509-4031 MOBILE
AngieH@locknet.com, panda@locknet.com

ADDITIONAL CONTACTS:
THOMAS DOWNS, SALES MANAGER, ThomasD@locknet.com; 800-887-4307 X116
EDDIE ANDUEZA, DIR. ARCH. DOOR & HRDWR SOL., eddiea@locknet.com; 859-432-2289

NOTES:
CONTRACTOR HAS THE OPTION TO PURCHASE STOREFRONT HARDWARE FROM OTHER SOURCE, PROVIDED THE HARDWARE IS PER SPEC. NO SUBSTITUTIONS ALLOWED. STOREFRONT HARDWARE SPECS ARE PROVIDED IN THE PROJECT BID PACKAGE. COORDINATE WITH PANDA PROJECT MANAGER LISTED ON SHEET G-001.

NO.	DOOR MATERIAL	SIZE	FRAME	FACED/EDGE	THK.	CORE	LITE	PASSAGE	LOCK/SET	ELECT. MAG-LOCK	WEIGHTY KEYPAD & EXT. BUTTON	PRIVACY	SF. PULL	SF. PUSH	PANIC	BUTT	CONT. PANIC	FLOOR	WALL	THRESHOLD	LATCH GUARD	DET. ALARM	SILENCERS	NO. PLATE	CLOSER	REMARKS
(11)	ALUMINUM STOREFRONT	2) 3'-6" X 7'-0"	ALUM.	BLACK ALUM.	1 3/4"	HOLLOW	GLASS	-	●	●	●	●	●	●	●	●	●	●	●	●	●	●	●	●	●	KAWNEER CURTAIN 1620 SYSTEM PULL ON EXTERIOR SIDE
(12)	ALUMINUM STOREFRONT	3'-6" X 7'-0"	ALUM.	BLACK ALUM.	1 3/4"	HOLLOW	GLASS	-	●	●	●	●	●	●	●	●	●	●	●	●	●	●	●	●	●	KAWNEER CURTAIN 1620 SYSTEM PULL ON EXTERIOR SIDE
(13)	S.C. WOOD	3'-0" X 7'-0"	H. MTL.	PLASTIC LAM. PRE-FINISHED	1 3/4"	SOLID	-	-	●	●	●	●	●	●	●	●	●	●	●	●	●	●	●	●	●	KICKPLATE ON EA. SIDE OF DOOR
(14)	NOT USED	-	-	-	-	-	-	-	-	-	-	-	-	-	-	-	-	-	-	-	-	-	-	-	-	-
(15)	HOLLOW METAL	3'-6" X 7'-0"	H. MTL.	PAINTED	1 3/4"	INSUL.	-	-	-	-	-	-	-	-	-	-	-	-	-	-	-	-	-	-	-	KICKPLATE ON INT. SIDE OF DOOR
(16)	HOLLOW METAL	3) 3'-0" X 7'-0"	H. MTL.	PAINTED	1 3/4"	INSUL.	-	-	●	●	●	●	●	●	●	●	●	●	●	●	●	●	●	●	●	WI LOUVERED VENT & BUG SCREEN ONE-WAY TINTING FILM ON INTERIOR SIDE
(18)	ALUMINUM STOREFRONT	3'-0" X 7'-0"	ALUM.	BLACK ALUM.	1 3/4"	HOLLOW	GLASS	-	●	●	●	●	●	●	●	●	●	●	●	●	●	●	●	●	●	WI LOUVERED VENT & BUG SCREEN ONE-WAY TINTING FILM ON INTERIOR SIDE
(11b)	ALUM. STORE VESTIBULE	3'-0" X 7'-0"	ALUM.	DARK BRONZE ANODIZED ALUM.	1 3/4"	HOLLOW	GLASS	-	-	-	-	-	-	-	-	-	-	-	-	-	-	-	-	-	-	-

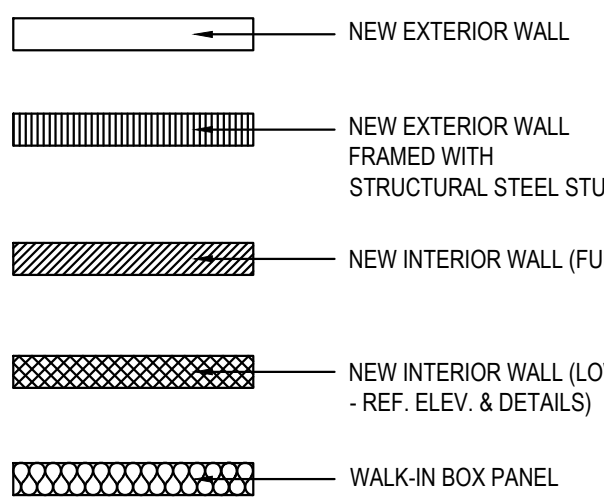
WALL SCHEDULE					
INSTALLED AND FURNISHED BY G.C. UNLESS NOTED OTHERWISE					
NO.	DESCRIPTION				
(W1)	3'-5/8" 20GA. METAL STUD WALL W/ 1/2" TYPE "X" GYP. BOARD BOTH SIDES (SEE ARCHITECTURAL DETAILS & ELEVATIONS)				
(W2)	3'-5/8" 20GA. METAL STUD WALL W/ 1/2" TYPE "X" GYP. BOARD ON ONE SIDE (SEE ARCHITECTURAL DETAILS & ELEVATIONS)				
(W3)	(2) 3'-5/8" 20GA. METAL STUD WALLS W/ 1/2" TYPE "X" GYP. BOARD BOTH SIDES (SEE ARCHITECTURAL DETAILS & ELEVATIONS)				
(W4)	3'-5/8" 20GA. METAL STUD LOW WALL W/ 1/2" TYPE "X" GYP. BD BOTH SIDES. PROVIDE 3 1/2" KNEE-WALL BRACE/POST @ CORNERS AND @ 48" O.C.				
(W5)	6" 20GA. METAL STUD WALL W/ 1/2" TYPE "X" GYP. BOARD BOTH SIDES (SEE ARCHITECTURAL DETAILS & ELEVATIONS)				
(W6)	6" 20GA. METAL STUD WALL W/ 1/2" TYPE "X" GYP. BOARD ONE SIDE (SEE ARCHITECTURAL DETAILS & ELEVATIONS)				
(W7)	3'-5/8" 20GA. METAL STUD LOW WALL W/ 1/2" TYPE "X" GYP. BOARD BOTH SIDES. PROVIDE 3 1/2" KNEE-WALL BRACE/POST @ CORNERS AND @ 48" O.C.				
(W8)	1 1/2" 20GA. HAT CHANNEL FURRING W/ 1/2" TYPE "X" GYP. BOARD ON ONE SIDE. REFER DETAILS FOR FURRING DISTANCE				

WALL PANEL SCHEDULE					
INSTALLED AND FURNISHED BY G.C. UNLESS NOTED OTHERWISE					
NO.	MANUFACTURER	DESCRIPTION	MFG #	COLOR / FINISH	REMARK
(WP1)	CRANE COMPOSITES INC.	F.R.P. THICKNESS: .075	LBCS.14	#636 (GRAY), SM/SM	CONTACT: LINDA RUSE 310.857.9036
(WP2)	-	S.S. PANEL (22 GA)	-	BRUSHED FINISH	FURNISHED BY PX. INSTALLED BY G.C.
(WP3)	-	S.S. PANEL (22 GA)	-	DIAMOND PATTERN FINISH	FURNISHED BY PX. INSTALLED BY G.C.
(W10)	WILSONART	PLASTIC LAMINATE	7995	MISSION MAPLE	CONTACT: DONNA ARIAPAD DONNAARIAPAD@FLAGGINC.COM
(W102)	WILSONART	PLASTIC LAMINATE	7984	MANAGLORE MANGO	CONTACT: DONNA ARIAPAD DONNAARIAPAD@FLAGGINC.COM
(W103)	WOLF GORDON	CUSTOM FRACTAL WALL COVERING	-	SATIN SUBSTRATE	CONTACT: NATALIE KNEZEVIC 800.347.0550 NATALIE.KNEZEVIC@WOLFGORDON.COM
(W104)	WOLF GORDON	CUSTOM GOLD/CLOUD WALL COVERING	-	GOLD FOIL SUBSTRATE	CONTACT: NATALIE KNEZEVIC 800.347.0550 NATALIE.KNEZEVIC@WOLFGORDON.COM
(G-1)	-	WALL COVERING	TBD	TBD	CONTACT: TBD
(G-4b)	-	WALL COVERING	TBD	TBD	
(G-4c)	-	WALL COVERING	TBD	TBD	
(G-4d)	-	MENU BACKER PANEL	TBD	TBD	
(G-7a)	-	WALL MURAL	TBD	TBD	
(G-8)	-	CANOPY GRAPHIC	TBD	TBD	

SPECIAL SURFACE SCHEDULE						
INSTALLED AND FURNISHED BY: G.C. UNLESS NOTED OTHERWISE						
NO	MANUFACTURER	PRODUCT	MFG #	STAIN / COLOR	FINISH	REMARK
(Q2-7)	CORIAN	ARTIFICIAL QUARTZ	-	LONDON SKY	POLISHED	
(Q2-8)	DALTILE	ARTIFICIAL QUARTZ	-	BROADWAY BLACK	POLISHED	SERVICE COUNTER & DRINK STATION PROVIDED BY PX. INSTALLED BY G.C.

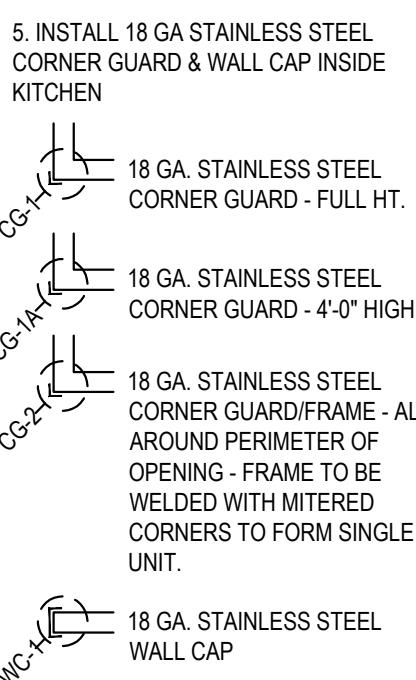
INTERIOR PAINT SCHEDULE					
INSTALLED AND FURNISHED BY G.C. UNLESS NOTED OTHERWISE					
NO.	MANUFACTURER	MFG #	COLOR	FINISH	REMARK
(P8A5)	SHERWIN-WILLIAMS	SW 7065	ARGOS	PROMAR 200, ZERO VOC, LATEX SEMI-GLOSS	REAR SERVICE DOOR
(P101)	SHERWIN-WILLIAMS	SW 6252	ICE CUBE	PROMAR 200, ZERO VOC, LATEX EGG-SHELL	RESTROOM & RESTROOM VESTIBULE CEILING, DINING ROOM SOFFIT
(P102)	NOT USED				
(P103)	NOT USED				
(P104)	SHERWIN-WILLIAMS	SW 2850	CHELSEA GRAY	PROMAR 200, ZERO VOC, LATEX EGG-SHELL	DINING RM. WALLS, RESTROOM VESTIBULE WALLS
(P105)	NOT USED				
(P106)	SHERWIN-WILLIAMS	SW 7020	BLACK FOX	DTM ACRYLIC GLOSS, LOW VOC	RESTROOM DOOR FRAMES
(P205)	SHERWIN-WILLIAMS	SW 7675	SEALSKIN	PROMAR 200, ZERO VOC, LATEX EGG-SHELL	FRONT & UNDERSIDE OF SERVICE LINE & BACK OF SERVICE LINE SOFFIT

WALL LEGEND



NOTE: THE FOLLOWING STAINLESS STEEL PROVIDED BY PX.-INSTALLED BY G.C.:
1. PANEL DIVIDERS AT WP3
2. INSIDE CORNER AT WP3 TO WP2
3. FLASHING AT TOP OF BASE WP3
4. WP2 PIECE AT LENGTH OF WALL

NOTE: THE FOLLOWING STAINLESS STEEL PROVIDED BY G.C.-INSTALLED BY G.C.:
5. INSTALL 18 GA STAINLESS STEEL CORNER GUARD & WALL CAP INSIDE KITCHEN



ALL OTHER STAINLESS STEEL BY G.C.

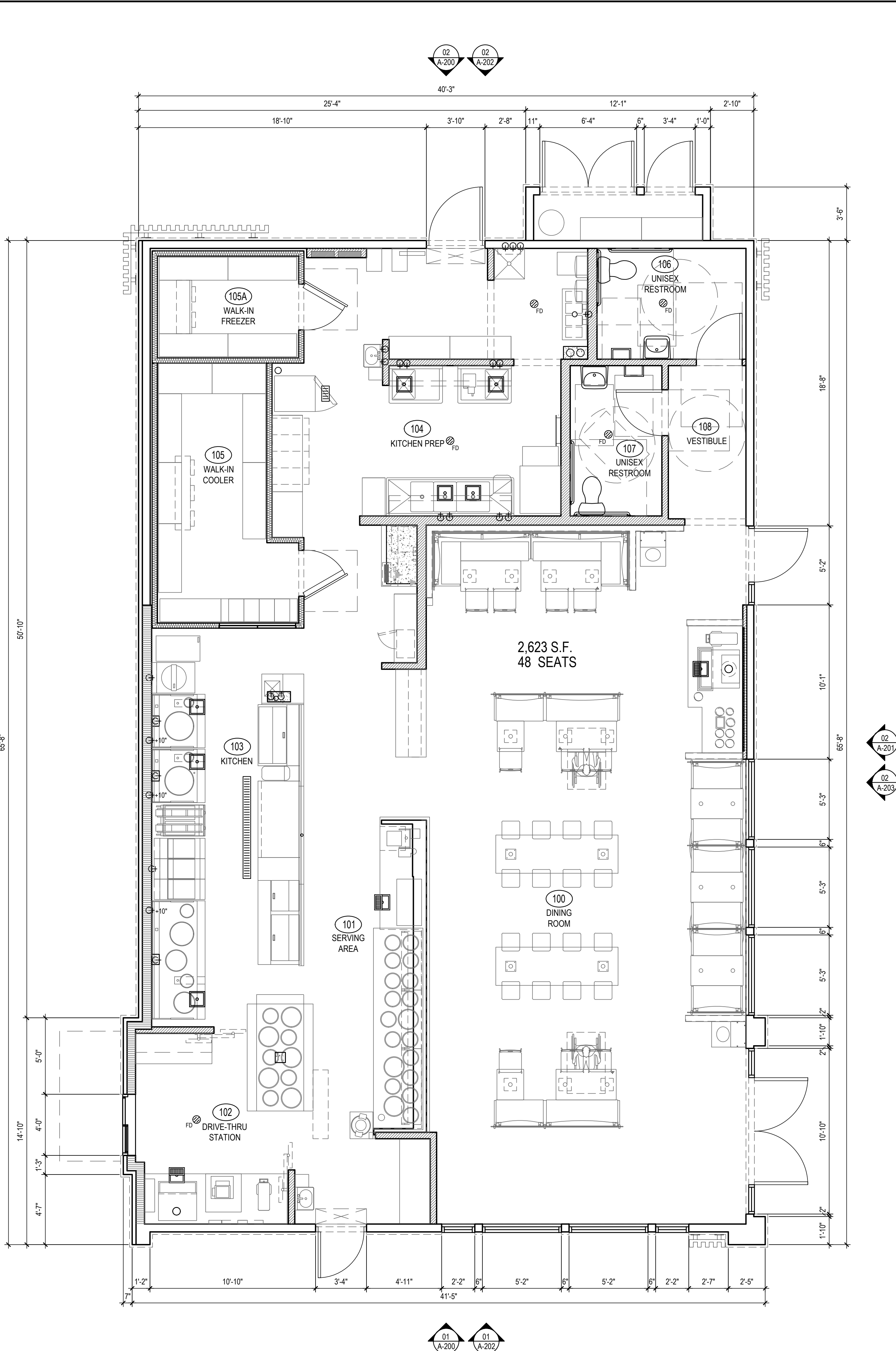
NOTE!!!!!!!!!!!!!!:

*ALL INTERIOR DIMENSIONS ARE TO FACE OF GYPSUM BOARD

NOTE:

CONTRACTOR TO NOTIFY 3rd PARTY VENDOR, PER THE VENDOR LIST, FOR WALL PRE-TREAT BEFORE CLOSING WALLS

TILE SCHEDULE (SEE SHEET A-104)



PRELIMINARY FLOOR PLAN

1

Scale= 1/4" = 1'-0"

A-103



PANDA EXPRESS, INC.
1683 Walnut Grove Ave.
Rosemead, California
91770

Telephone: 626.799.9898
Facsimile: 626.372.8288

All ideas, designs, arrangement and plans indicated or represented by this drawing are the property of Panda Express Inc. and were created for use on this specific project. None of these ideas, designs, arrangements or plans may be used by or disclosed to any person, firm, or corporation without the written permission of Panda Express Inc.

REVISIONS:

NO.	DESCRIPTION	DATE	BY	CHKD.
1				
2				
3				
4				
5				
6				
7				
8				
9				
10				

ISSUE DATE:

DRAWN BY: CRM Architects & Planners, Inc.

PANDA PROJECT #: S8-23-D22360

ARCH PROJECT #: CRM 2203

CRM Architects & Planners Inc.

5800 Stanford Ranch Road Suite 720
Rocklin, CA 95765
phone: (916) 451-1500

STAMP:



LANCASTER DR. NE &
WEATHERS ST. NE

1292 LANCASTER BLVD.
SALEM, OR 97301

2600 Plan

A-103.P

PRELIMINARY FLOOR PLAN

SPR SUBMITTAL DWGS