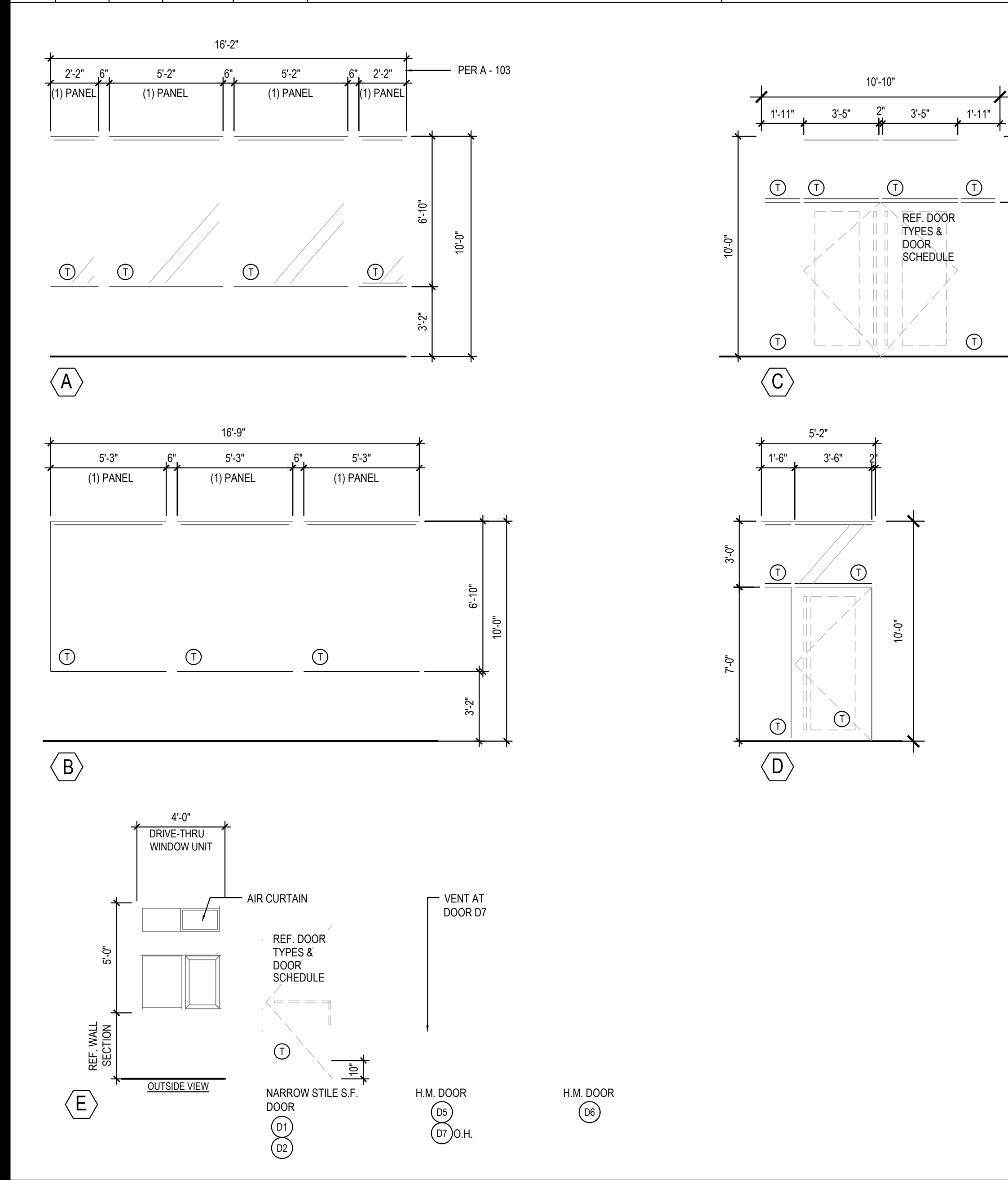


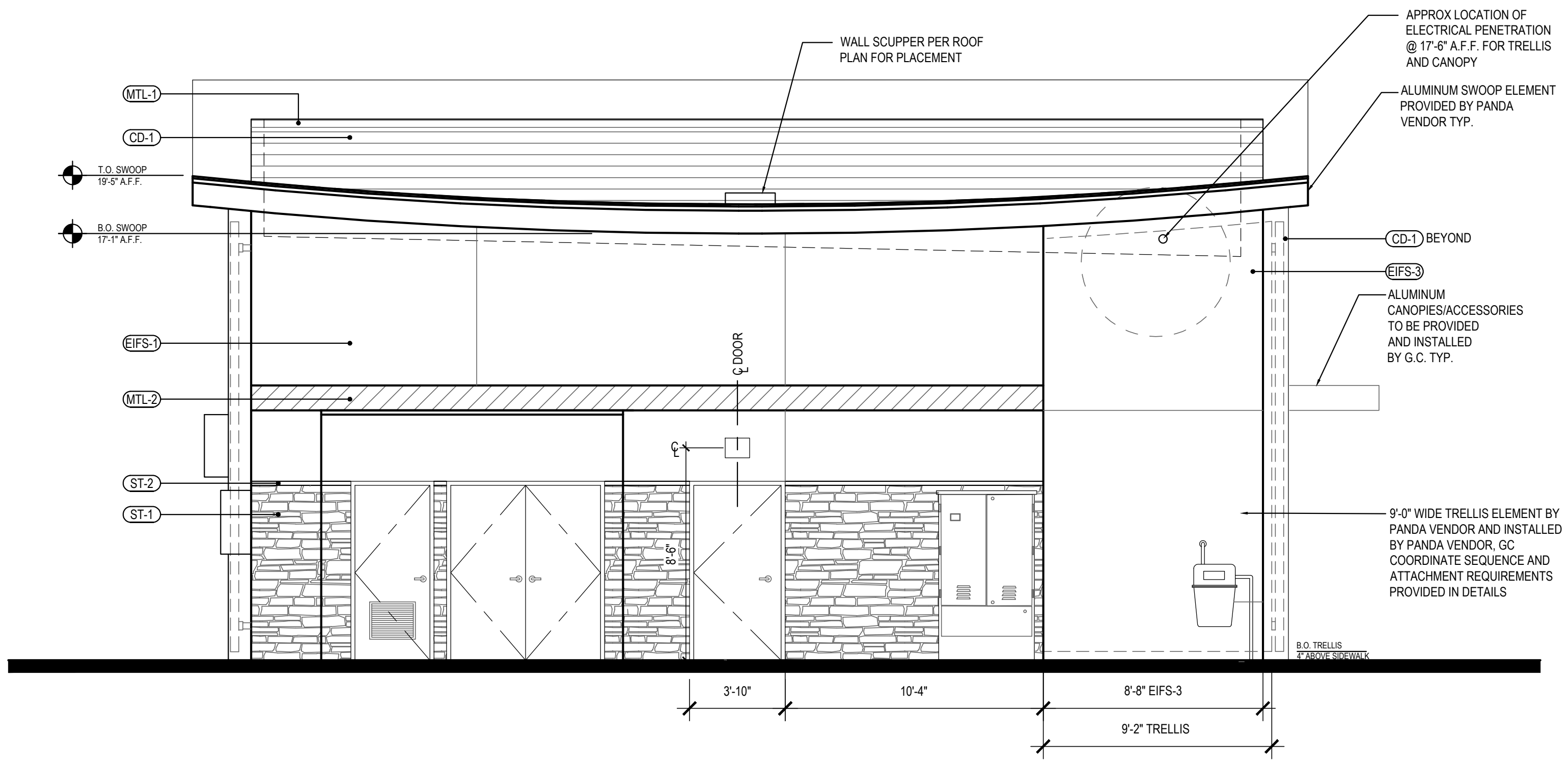
NO	MANUFACTURER	MFG#	COLOR	FINISH	NOTES
(EIFS-1)	STO	STOTHERM ESSENCE SYSTEM	SW 6252 ICE CUBE	FINE	BUILDING BODY
(EIFS-2)	STO	STOTHERM ESSENCE SYSTEM	SW 7069 IRON ORE	FINE	EIFS ACCENT BAND
(EIFS-3)	STO	STOTHERM ESSENCE SYSTEM	PANTONE COLOR 200C - RED	-	EIFS BEHIND TRELIS
(ST-1S)	CORONADO STONE PRODUCTS	CHISELED STONE SILL	CHARCOAL	-	STONE CAP (3/8" VERTICAL JOINT - MORTAR TO MATCH STONE CAP)
(ST-1)	CORONADO STONE PRODUCTS	STRIP STONE	BLACK FOREST	-	WAINSCOT CONTACT: LISA KILGORE: 864-962-1221 PROVIDE 3/8" MORTAR JOINTS. MFG.: ARGOS. COLOR: CHARCOAL
(CD-1)	NICHIHA	VINTAGEWOOD	SPRUCE	-	COMPOSITE DECKING
(MTL-2)	PANDA VENDOR	ALLEN INDUSTRIES	PMS BLACK-7C	6ATIN FINISH	CANOPY W/ LED W/ DOWN LIGHT AROUND BUILDING
(MTL-1)	EXCEPTIONAL METALS	-	"PANDA EXPRESS IRON ORE"	-	CAP FLASHING

SYM	WIDTH	HEIGHT	GLASS	FRAME	REMARKS
(A)	16'-2" LIN. FEET	6'-10"	1" INSULATED GLASS	BLACK ANOD ALUMINUM STOREFRONT	1" INSULATED GLAZING, IN 4.5" X 2" IN ANODIZED ALUMINUM FRAME REFER WINDOW TYPES FOR INDIVIDUAL SIZES
(B)	16'-9" LIN. FEET	6'-10"	1" INSULATED GLASS	BLACK ANOD ALUMINUM STOREFRONT	1" INSULATED GLAZING, IN 4.5" X 2" IN ANODIZED ALUMINUM FRAME REFER WINDOW TYPES FOR INDIVIDUAL SIZES
(C)	10'-10"	10'-0"	1" INSULATED GLASS	BLACK ANOD ALUMINUM STOREFRONT	KAWNEER CURTAIN WALL 1620 SYSTEM WITH 1" INSULATED GLAZING, IN 6" X 2" IN ANODIZED ALUMINUM FRAME MOON GATE TO CONNECT WITH KAWNEER ATTACHMENT BRACKET 834-745.
(D)	5'-2"	10'-0"	1" INSULATED GLASS	BLACK ANOD ALUMINUM STOREFRONT	KAWNEER CURTAIN WALL 1620 SYSTEM WITH 1" INSULATED GLAZING, IN 6" X 2" IN ANODIZED ALUMINUM FRAME MOON GATE TO CONNECT WITH KAWNEER ATTACHMENT BRACKET 834-745.
(E)	4'-0"	59.5"	TEMPERED GLASS	BLACK ANODIZED ALUMINUM	QUIK-SERV (HEATED AIR CURTAIN), ROUGH OPENING 83" X 60" SEE ADDITIONAL NOTE # 5. CONTACT: WADE ARNOLD, 800-388-8307
(F)	7'-3"	10'-0"	SINGLE PANE GLASS	DARK BRONZE ANODIZED ALUMINUM	SINGLE PANE VESTIBULE GLAZING
(G)	7'-10"	10'-0"	SINGLE PANE GLASS	DARK BRONZE ANODIZED ALUMINUM	SINGLE PANE VESTIBULE GLAZING



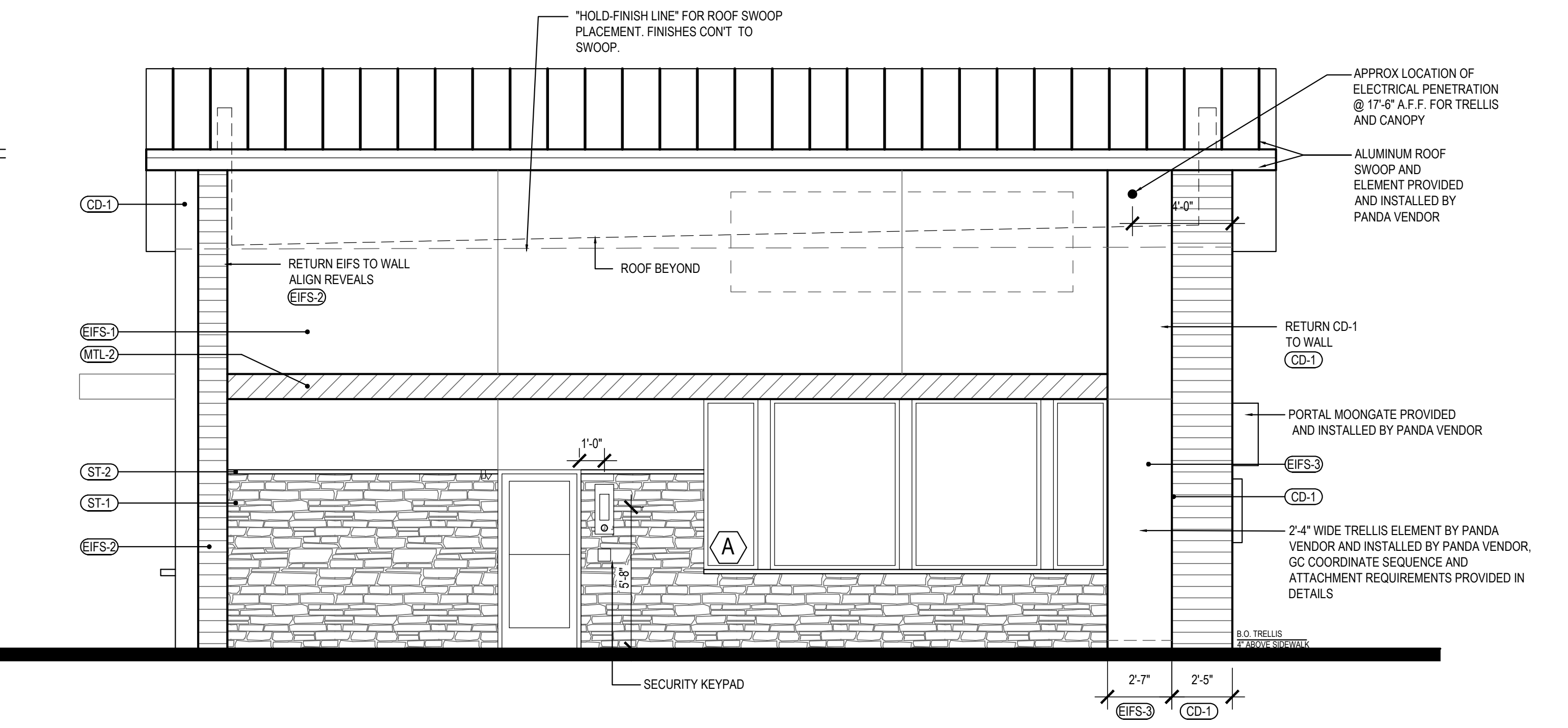
WINDOW AND DOOR ELEVATIONS 3 Scale= NTS A-200

- PEAK 23'-3" A.F.F.
- T.O. PARAPET 21'-8" A.F.F.
- T.O. EAVE 19'-5" A.F.F.
- B.O. BAND 10'-0" A.F.F.
- T.O. WAINSCOT 7'-2" A.F.F.
- FINISH FLOOR 0'-0" A.F.F.



EAST ELEVATION 2 Scale= 1/4" = 1'-0" A-200

- PEAK 23'-3" A.F.F.
- T.O. SIDE PARAPET 21'-8" A.F.F.
- T.O. EAVE 20'-0" A.F.F.
- T.O. PARAPET 19'-8" A.F.F.
- B.O. BAND 10'-0" A.F.F.
- T.O. WAINSCOT 7'-2" A.F.F.
- FINISH FLOOR 0'-0" A.F.F.



(FRONT) WEST ELEVATION 1 Scale= 1/4" = 1'-0" A-200



PANDA EXPRESS, INC.
1683 Walnut Grove Ave.
Rosemead, California 91770
Telephone: 626.799.9898
Facsimile: 626.372.8288

All ideas, designs, arrangement and plans indicated or represented by this drawing are the property of Panda Express Inc. and were created for use on this specific project. None of these ideas, designs, arrangements or plans may be used by or disclosed to any person, firm, or corporation without the written permission of Panda Express Inc.

REVISIONS:

ISSUE DATE:

DRAWN BY: CRM Architects & Planners, Inc.

PANDA PROJECT #: S8-23-D22360
ARCH PROJECT #: CRM 2203



5800 Stanford Ranch Road Suite 720
Rocklin, CA 95765
phone: (916) 451-1500



LANCASTER DR. NE & WEATHERS ST. NE
1292 LANCASTER BLVD.
SALEM, OR 97301

2600 Plan

A-200

EXTERIOR ELEVATIONS

WATER/AIR BARRIER

PRIMARY LAYER:
FLUID APPLIED WATER PROOFING AS SPECIFIED OVER ENTIRE SURFACE OF EXTERIOR SHEATHING AS SCHEDULED TO RECEIVE COMPOSITE DECKING.

SECONDARY LAYER:
15 POUND BUILDING FELT OVER ENTIRE SURFACE OF EXTERIOR SHEATHING AS SCHEDULED TO RECEIVE COMPOSITE DECKING.

MECHANICAL PATCH:
MASTIC OVER ALL MECHANICAL FASTENERS

CONSTRUCTION

EXTERIOR SHEATHING - REF. ARCHITECTURAL AND STRUCTURAL DETAILS
WALL STUD - REFER STRUCTURAL

NICHIHA ARCHITECTURAL WALL PANEL

NICHIHA CLIP SYSTEM

PROVIDE CORROSION RESISTANT FASTENERS @ 16" O.C.

WOOD STUDS:
FASTENERS MUST PENETRATE SOLID STRUCTURE A MINIMUM OF 1"

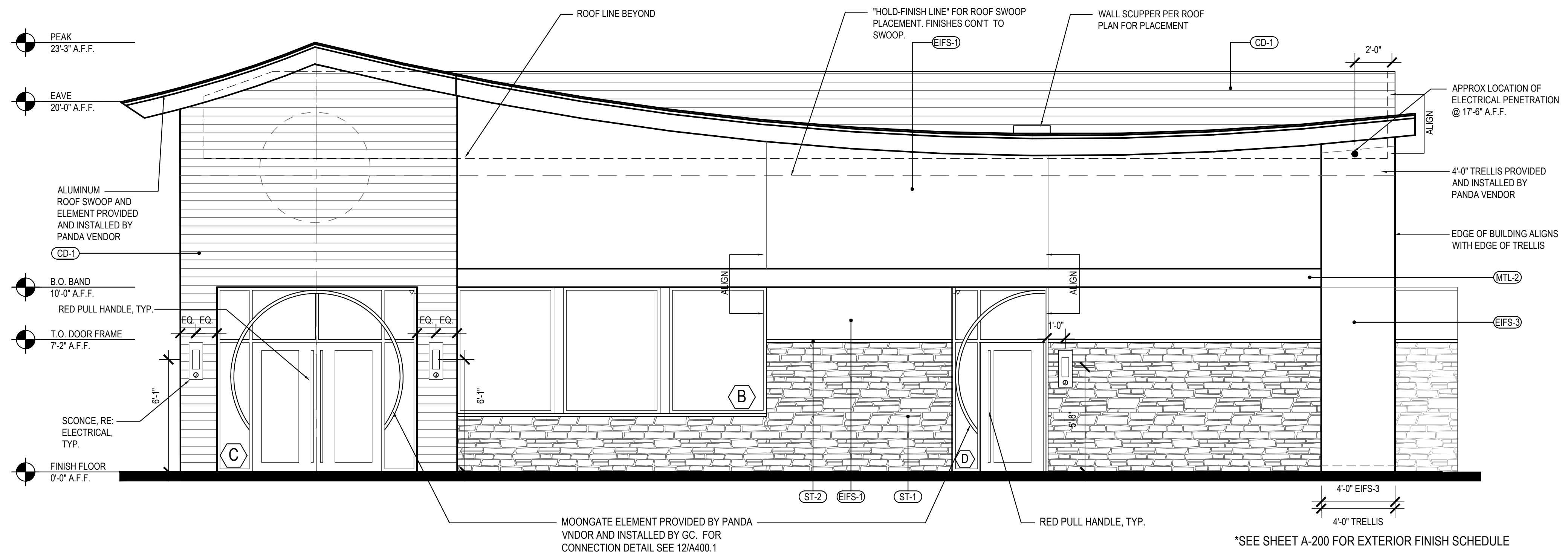
METAL STUDS:
SCREWS MUST PENETRATE SOLID STRUCTURE A MINIMUM OF 1/2"

VERTICAL CONTROL/EXPANSION JOINTS - 3/8" SEALANT JOINT

HORIZONTAL JOINT BETWEEN FINISHED BOARDS

NICHIHA STARTER TRACK - TRACK TO BE SECURED AT EVERY STUD LINE

SURFACE MOUNTING FASTENING SYSTEM

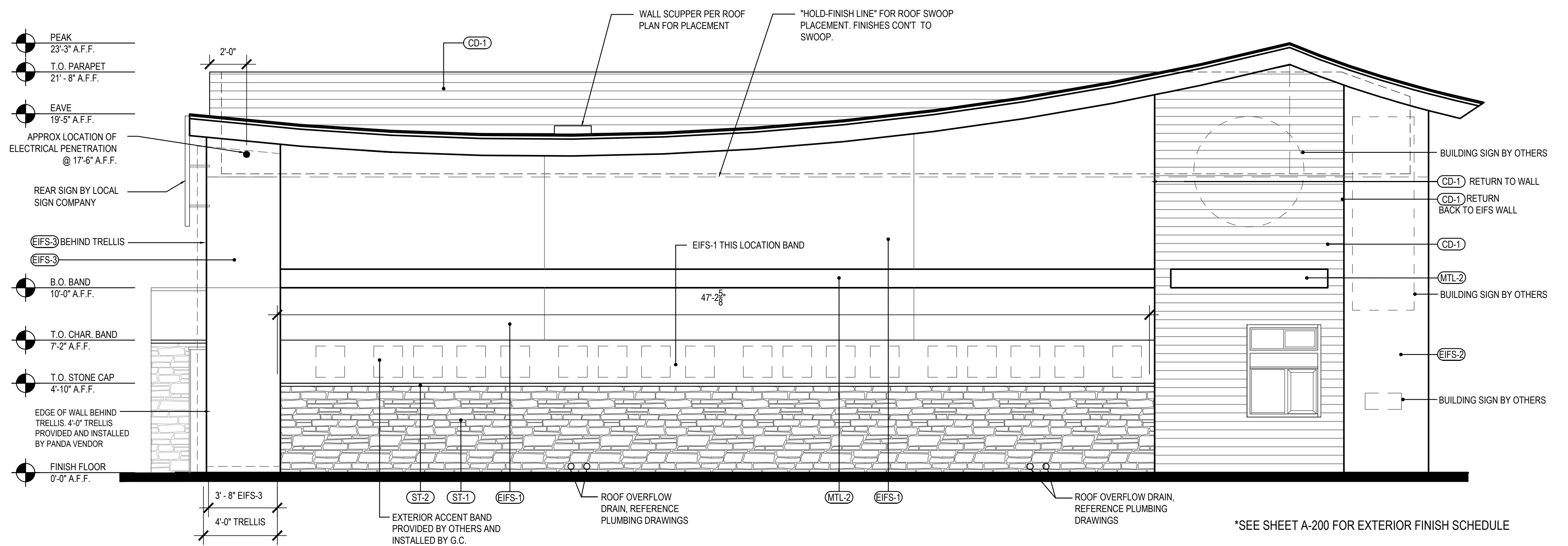


NICHIHA PANEL FASTENING & WATER PROOFING 3

Scale= 1 1/2" = 1'-0" A-201

SOUTH ELEVATION 2

Scale= 1/4" = 1'-0" A-201



(DRIVE-THRU) NORTH ELEVATION 1

Scale= 1/4" = 1'-0" A-201



PANDA EXPRESS, INC.
1683 Walnut Grove Ave.
Rosemead, California
91770
Telephone: 626.799.9898
Facsimile: 626.372.8288

All ideas, designs, arrangement and plans indicated or represented by this drawing are the property of Panda Express Inc. and were created for use on this specific project. None of these ideas, designs, arrangements or plans may be used by or disclosed to any person, firm, or corporation without the written permission of Panda Express Inc.

REVISIONS:

NO.	DATE	DESCRIPTION

ISSUE DATE:

DRAWN BY: CRM Architects & Planners, Inc.

PANDA PROJECT #: S8-23-D22360
ARCH PROJECT #: CRM 2203

CRM Architects & Planners Inc.

5800 Stanford Ranch Road Suite 720
Rocklin, CA 95765
phone: (916) 451-1500

STAMP:



LANCASTER DR. NE & WEATHERS ST. NE

1292 LANCASTER BLVD.
SALEM, OR 97301

2600 Plan

A-201

EXTERIOR ELEVATIONS



EAST ELEVATION 2

Scale= 1/4" = 1'-0" A-202



(FRONT) WEST ELEVATION 1

Scale= 1/4" = 1'-0" A-202

PROPOSED SIGNAGE UNDER SEPARATE PERMIT & SUBMITTAL BY SIGNAGE COMPANY



PANDA EXPRESS, INC.
1683 Walnut Grove Ave.
Rosemead, California
91770
Telephone: 626.799.9898
Facsimile: 626.372.8288

All ideas, designs, arrangement and plans indicated or represented by this drawing are the property of Panda Express Inc. and were created for use on this specific project. None of these ideas, designs, arrangements or plans may be used by or disclosed to any person, firm, or corporation without the written permission of Panda Express Inc.

REVISIONS:

△		
△		
△		
△		
△		
△		
△		
△		

ISSUE DATE:

DRAWN BY: CRM Architects & Planners, Inc.

PANDA PROJECT #: S8-23-D22360
ARCH PROJECT #: CRM 2203

CRM Architects & Planners Inc.

5800 Stanford Ranch Road Suite 720
Rocklin, CA 95765
phone: (916) 451-1500



LANCASTER DR. NE & WEATHERS ST. NE

1292 LANCASTER BLVD.
SALEM, OR 97301

2600 Plan

A-202

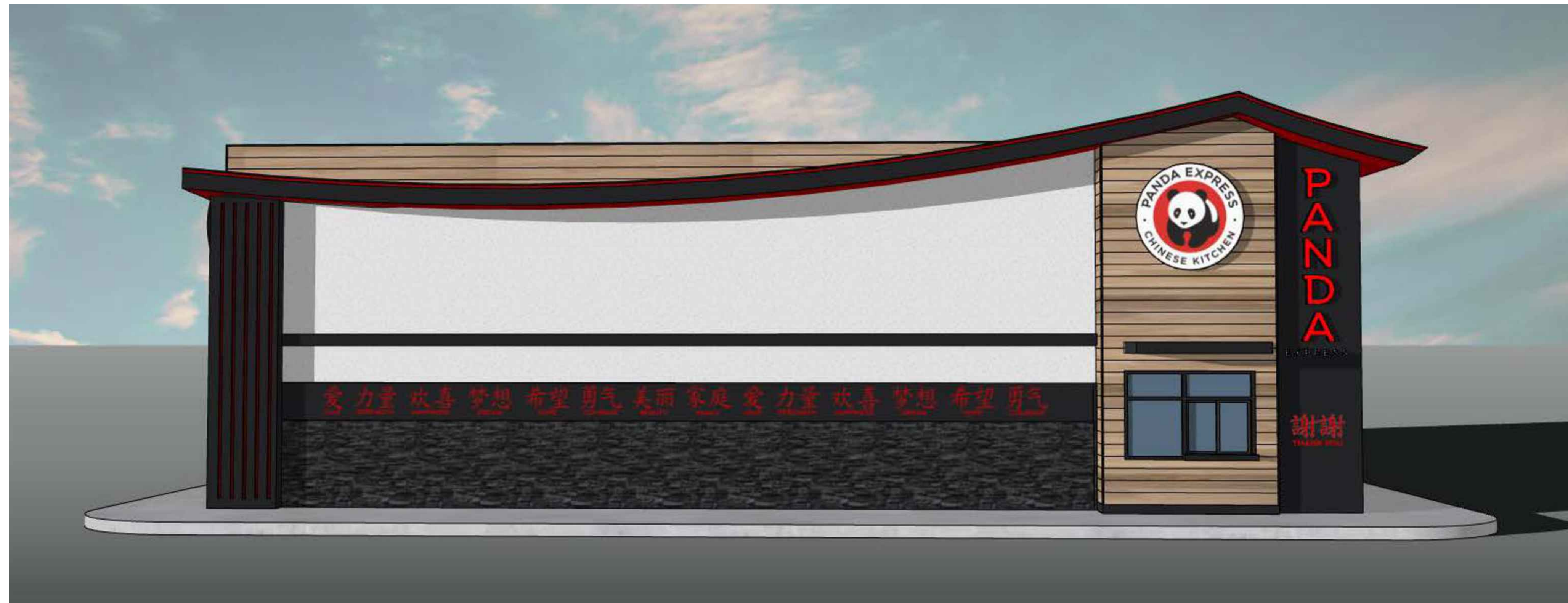
COLORED EXTERIOR ELEVATIONS

SPR SUBMITTAL DWGS



SOUTH ELEVATION 2

Scale= 1/4" = 1'-0" A-203



(DRIVE THRU) NORTH ELEVATION 1

Scale= 1/4" = 1'-0" A-203

PROPOSED SIGNAGE UNDER SEPARATE PERMIT & SUBMITTAL BY SIGNAGE COMPANY



PANDA EXPRESS, INC.
1683 Walnut Grove Ave.
Rosemead, California
91770
Telephone: 626.799.9898
Facsimile: 626.372.8288

All ideas, designs, arrangement and plans indicated or represented by this drawing are the property of Panda Express Inc. and were created for use on this specific project. None of these ideas, designs, arrangements or plans may be used by or disclosed to any person, firm, or corporation without the written permission of Panda Express Inc.

REVISIONS:

△		
△		
△		
△		
△		
△		
△		
△		

ISSUE DATE:

DRAWN BY: CRM Architects & Planners, Inc.

PANDA PROJECT #: S8-23-D22360
ARCH PROJECT #: CRM 2203

CRM Architects & Planners Inc.

5800 Stanford Ranch Road Suite 720
Rocklin, CA 95765
phone: (916) 451-1500

STAMP:



LANCASTER DR. NE & WEATHERS ST. NE

1292 LANCASTER BLVD.
SALEM, OR 97301

2600 Plan

A-203

COLORED EXTERIOR ELEVATIONS

SPR SUBMITTAL DWGS