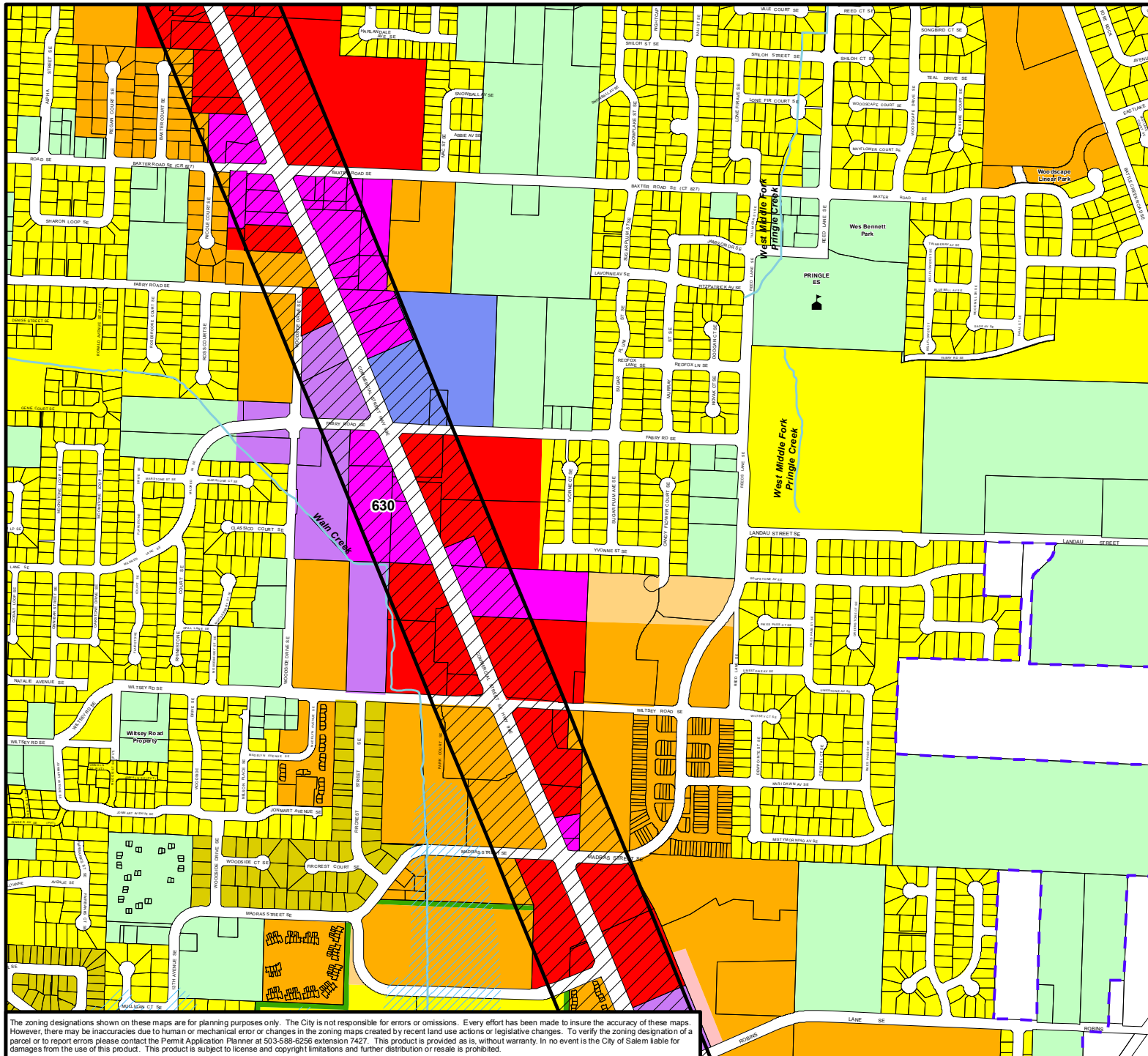


8314N

8315S



The zoning designations shown on these maps are for planning purposes only. The City is not responsible for errors or omissions. Every effort has been made to insure the accuracy of these maps. However, there may be inaccuracies due to human or mechanical error or changes in the zoning maps created by recent land use actions or legislative changes. To verify the zoning designation of a parcel or to report errors please contact the Permit Application Planner at 503-588-6256 extension 7427. This product is provided as is, without warranty. In no event is the City of Salem liable for damages from the use of this product. This product is subject to license and copyright limitations and further distribution or resale is prohibited.

8323N

Zoning

City of Salem, Oregon
Community Development
Planning Division

Zoning Designations

- EFU - Exclusive Farm Use
- RA - Residential Agriculture
- RS - Single Family Residential
- RD - Duplex Residential
- RM1 - Multiple Family Residential 1
- RM2 - Multiple Family Residential 2
- RH - Multiple Family High-Rise Residential
- CO - Commercial Office
- CN - Neighborhood Commercial
- CR - Retail Commercial
- CG - General Commercial
- CB - Central Business District
- WCSB - West Salem Central Business District
- IC - Industrial Commercial
- IBC - Industrial Business Campus
- IP - Industrial Park
- IG - General Industrial
- SCI - Second Street Craft Industrial Corridor
- II - Intensive Industrial
- PA - Public Amusement
- PC - Public-Private Cemetery
- PE - Public-Private Education
- PH - Public Health
- PM - Capitol Mall
- PS - Public Service
- EC - Employment Center
- ESMU - Edgewater/Second Street Mixed-Use Corridor
- FMU - Fairview Mixed-Use
- MU-I - Mixed Use-I
- MU-II - Mixed Use-II
- NCMU - Neighborhood Center Mixed-Use
- SWMU - South Waterfront Mixed-Use
- Overlay Zone *
- Compact Development Overlay Zone *
- Historic District *
- Mixed-Use Overlay Zone *
- Edgewater/Wallace Road Overlay Zone *
- Willamette Greenway Overlay
- Greenway Boundary
- Flood Plain
- Flood Way
- City Limits
- Urban Growth Boundary
- Taxlots
- Water
- School

* For the number/letter descriptions shown on the map, see "Overlay Zones/Districts Locator" document.
<http://geoweb.cityofsalem.net/pdfs/Planning/Zoning/Overlays.pdf>



0 400 800 Feet

8314S

CITY OF *Salem*
AT YOUR SERVICE

Community Development Dept.

Created on: 4/29/2022

Path: N:\CD\Data\Zoning\Web_Zoning_Map.mxd