

# PRELIMINARY SITE PLAN

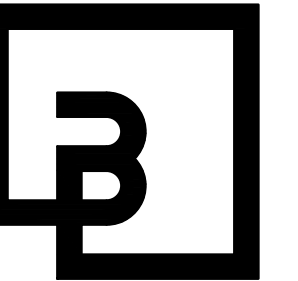
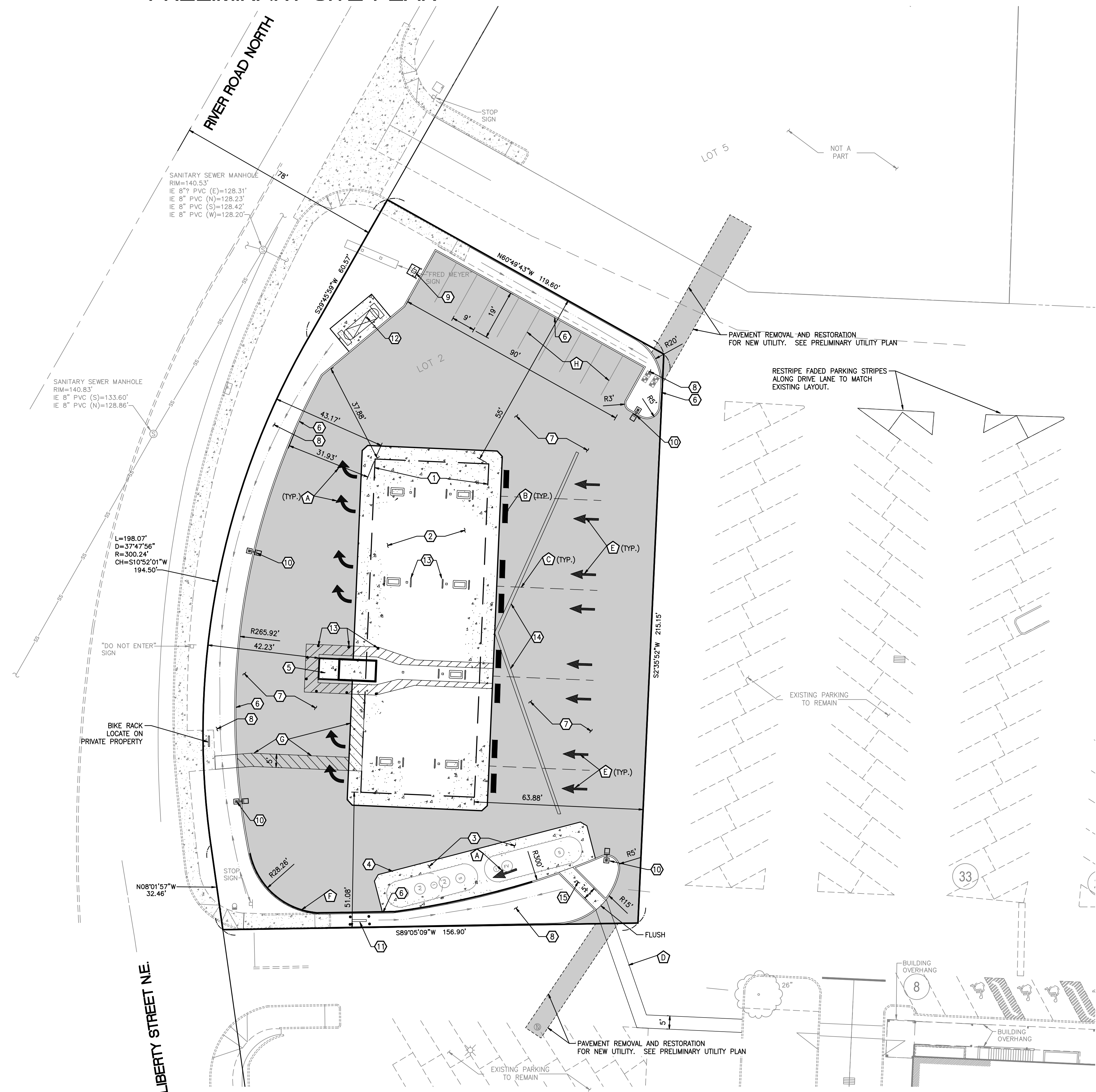


## LEGEND

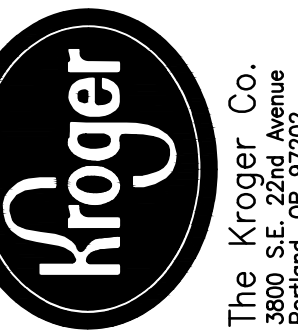
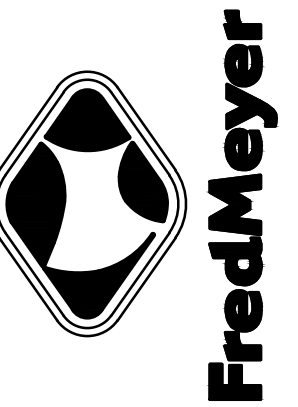
NEW CONCRETE CURB

- ① PUMP ISLAND CANOPY WITH 7 MPD'S.
- ② REINFORCED CONCRETE DRIVE SLAB BENEATH PUMP ISLAND CANOPY.
- ③ (1) 10,000/8,000 GALLON DUEL COMPARTMENT AND (1) 20,000 GALLON UNDERGROUND GASOLINE STORAGE TANKS
- ④ REINFORCED CONCRETE SLAB ABOVE UNDERGROUND GASOLINE STORAGE TANKS.
- ⑤ KIOSK ENCLOSURE.
- ⑥ CONCRETE BARRIER CURB. SEE GRADING AND STORM DRAINAGE PLAN FOR CURB BREAKS
- ⑦ HEAVY DUTY ASPHALT PAVEMENT
- ⑧ NEW LANDSCAPING. SEE GRADING AND STORM DRAINAGE PLAN FOR BIOFILTRATION SWALE INFO.
- ⑨ (1) SELF SERVE AIR UNIT ON 4'-0"x4'-0"x6" CONCRETE MOUNTING PAD.
- ⑩ AREA LOT LIGHT, TYPICAL
- ⑪ STORAGE TANK VENT STACK
- ⑫ BULK PROPANE TANK ON CONCRETE PAD
- ⑬ NEW BOLLARDS (TYP)
- ⑭ 2" HIGH ASPHALT SPEED HUMP TO DIRECT DRAINAGE TOWARD PLANTER SWALE
- ⑮ CEMENT CONCRETE PATHWAY

A	WHITE PAINTED DIRECTIONAL TRAFFIC ARROW
B	24" WIDE WHITE PAINTED STOP BAR
C	8" WIDE WHITE SKIP STRIPES (LANE DIVIDERS)
D	4" WIDE WHITE PAINTED CROSS-HATCH AT 2' O.C./36° ANGLE.
E	ON-SITE WHITE PAINTED LANE ARROW
F	RED PAINTED CURB (FIRE LANE – NO PARKING).
G	PAINTED CROSSWALK STRIPING, TYPICAL
H	4" WIDE WHITE PAINTED PARKING STALL LINE



arghausen.com



3800 S.E. 22nd Avenue  
Portland, OR 97202  
Phone (503) 232-8844  
Fax (503) 797-3509



EXPIRES: 06/30/23

[illegible]

Model:

PRELIMINARY SITE PLAN  
FRED MEYER  
FUELING FACILITY

Drawing No.:

P3 of 5