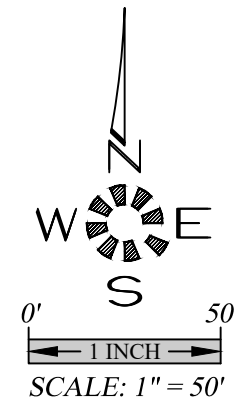
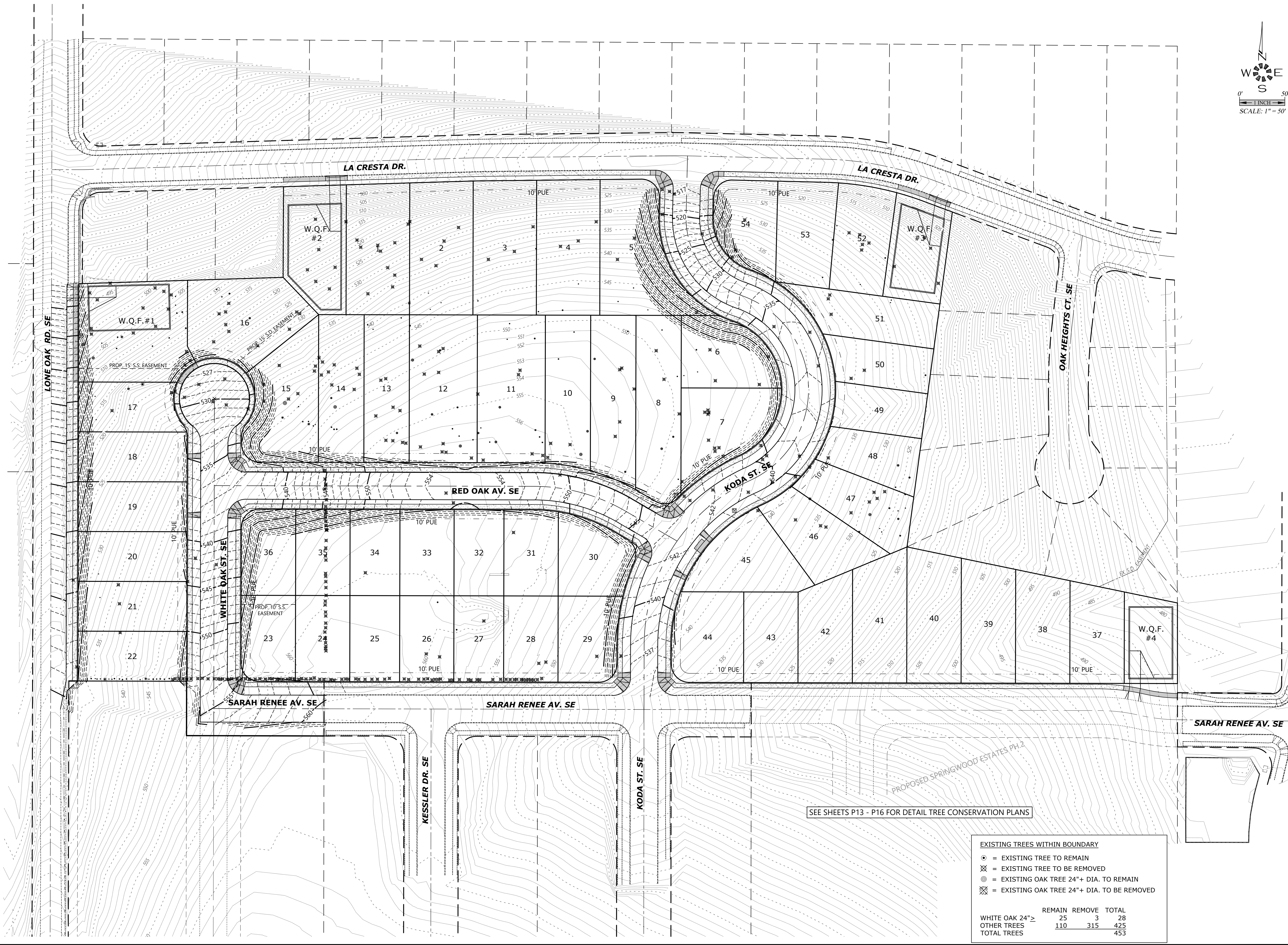


J:\Projects\7154 - Lone Oak\5130\DWG 60\7154.dwg, P12 - R12, 4/7/2022 1:20:53 AM, Tdla

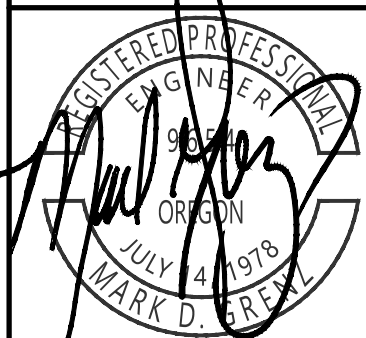


**TREE CONSERVATION
OVERALL PLAN**

OAK GROVE

NO CHANGES, MODIFICATIONS
OR REVISIONS TO BE
MADE WITHOUT WRITTEN
AUTHORIZATION FROM THE
DESIGN ENGINEER.
DIMENSIONS & NOTES TAKE
PRECEDENCE OVER
GRAPHICAL REPRESENTATION.

7154- P12-TREE
Design: M.D.G.
Drawn: D.G.G.
Checked: J.J.G.
Date: JUNE 2021
Scale: AS SHOWN
As-Built: _____



EXPIRES: 06-30-2021
JOB # 7154

SEE SHEETS P13 - P16 FOR DETAIL TREE CONSERVATION PLANS

- EXISTING TREES WITHIN BOUNDARY**
- = EXISTING TREE TO REMAIN
 - ⊗ = EXISTING TREE TO BE REMOVED
 - ⊙ = EXISTING OAK TREE 24"+ DIA. TO REMAIN
 - ⊗ = EXISTING OAK TREE 24"+ DIA. TO BE REMOVED

	REMAIN	REMOVE	TOTAL
WHITE OAK 24"≥	25	3	28
OTHER TREES	110	315	425
TOTAL TREES			453