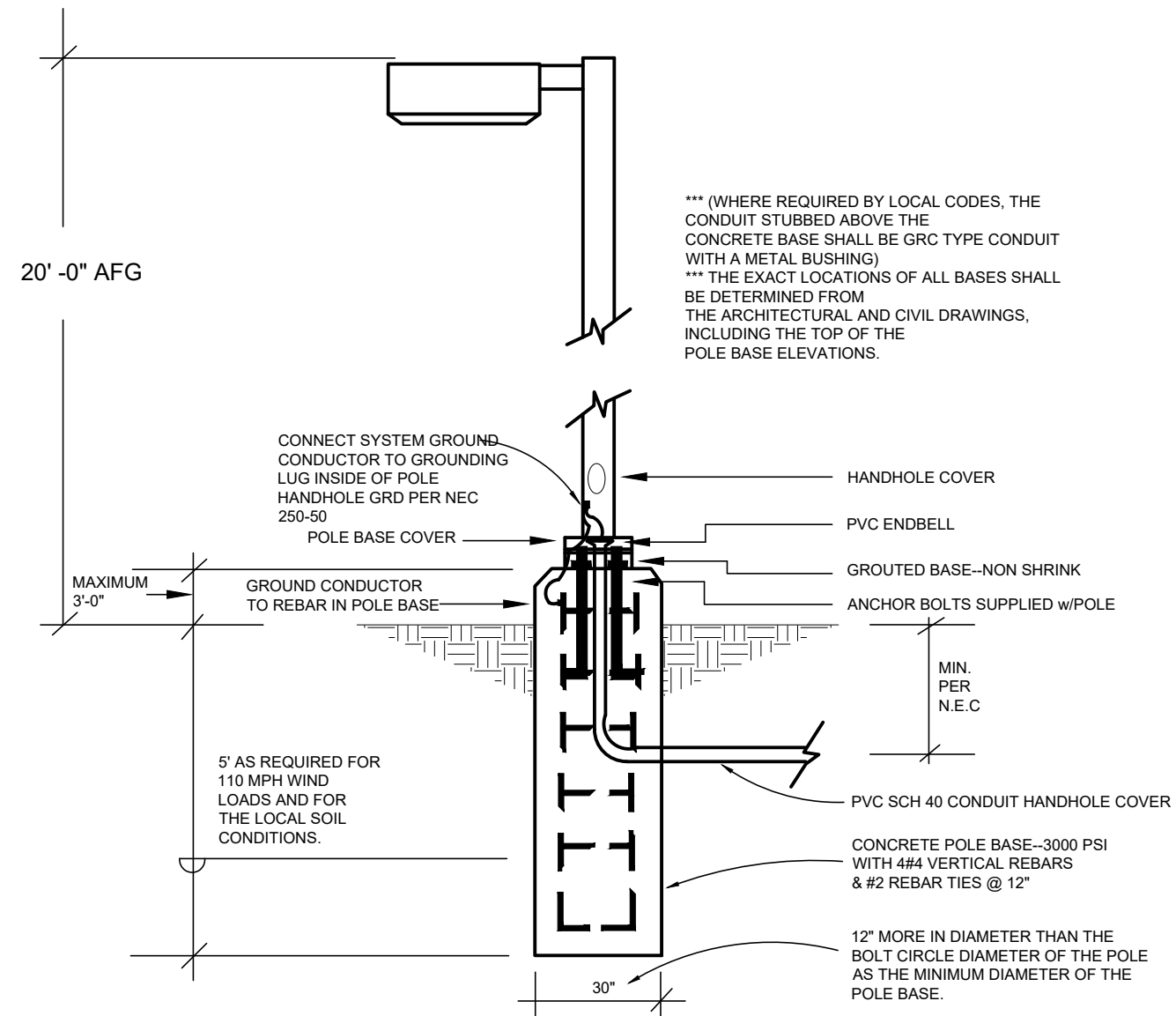


Calculation Summary							
Label	CalcType	Units	Avg	Max	Min	Avg/Min	Max/Min
Overall Calcs	Illuminance	Fc	1.88	10.3	0.0	N.A.	N.A.
Drive Thru	Illuminance	Fc	4.19	7.4	1.2	3.48	6.17
Parking	Illuminance	Fc	2.78	4.5	1.8	1.54	2.50
Luminaire Schedule							
Symbol	Qty	Label	Arrangement	Total Lamp Lumens	LLF	Description	
	4	AA - SLM-LED-18L-SIL-FT-40-70	Single	N.A.	1.000	SLM-LED-18L-SIL-FT-40-70CRI-1L	
	12	JM-1 - OL-LED-X63-FL-11353040	Single	N.A.	1.000	OL-LED-X63-FL-9	
	1	AA-1 - SLM-LED-18L-SIL-FT-40-70CR	SINGLE	N.A.	1.000	SLM-LED-18L-SIL-FT-40-70CRI	
	51	EXT1 LTS14FI0027MB s15070010m	SINGLE	96.593	1.000		
	72	EXT2 V4-OUT-30-SB-1FI-typeC	SINGLE	181.22	0.900	V4-OUT-30-SB	

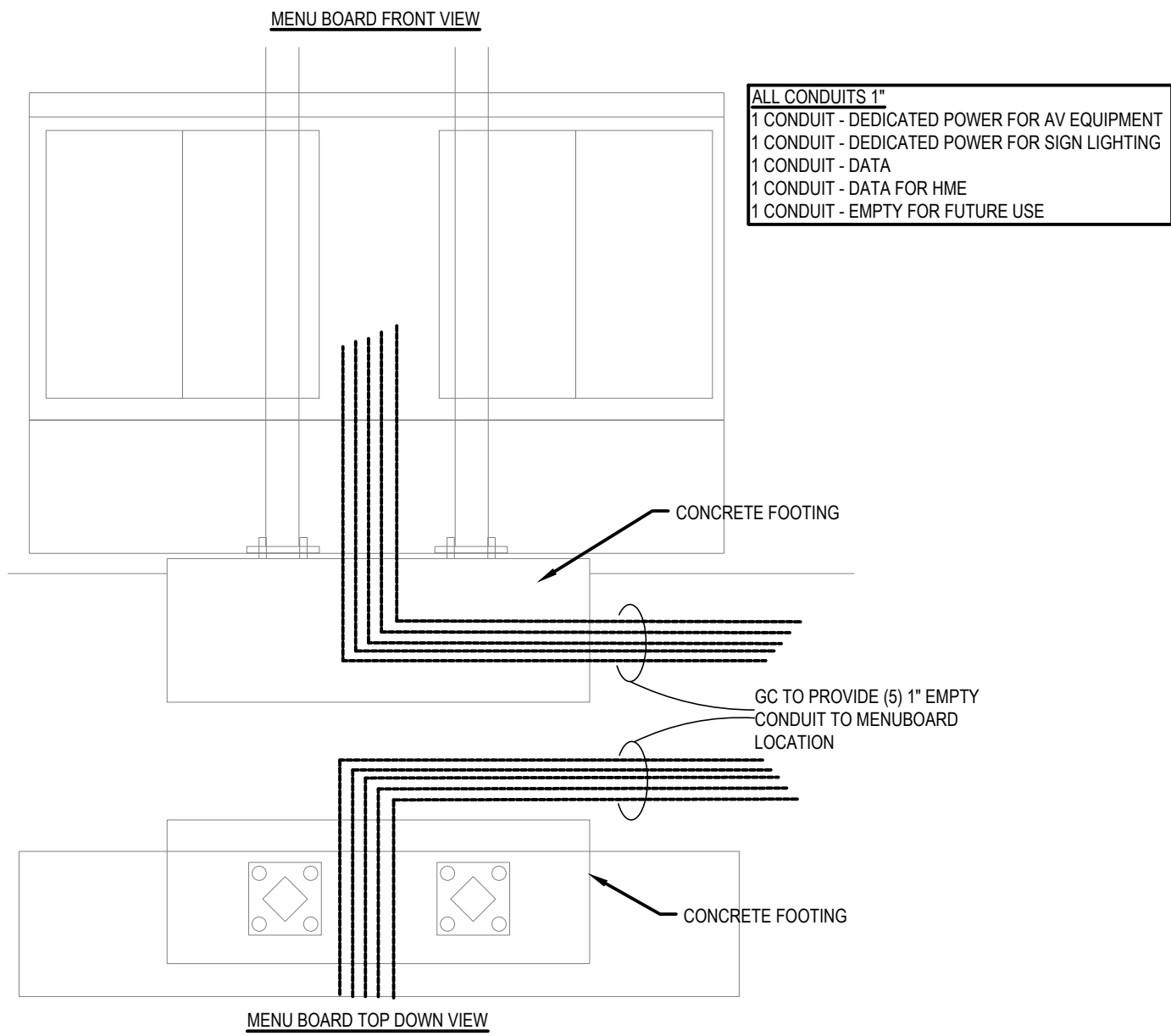


2 TYPICAL POLE LIGHT DETAIL  
SCALE: 1/4"=1'-0"

1 PHOTOMETRIC PLAN  
SCALE: 3/32"= 1'-0"



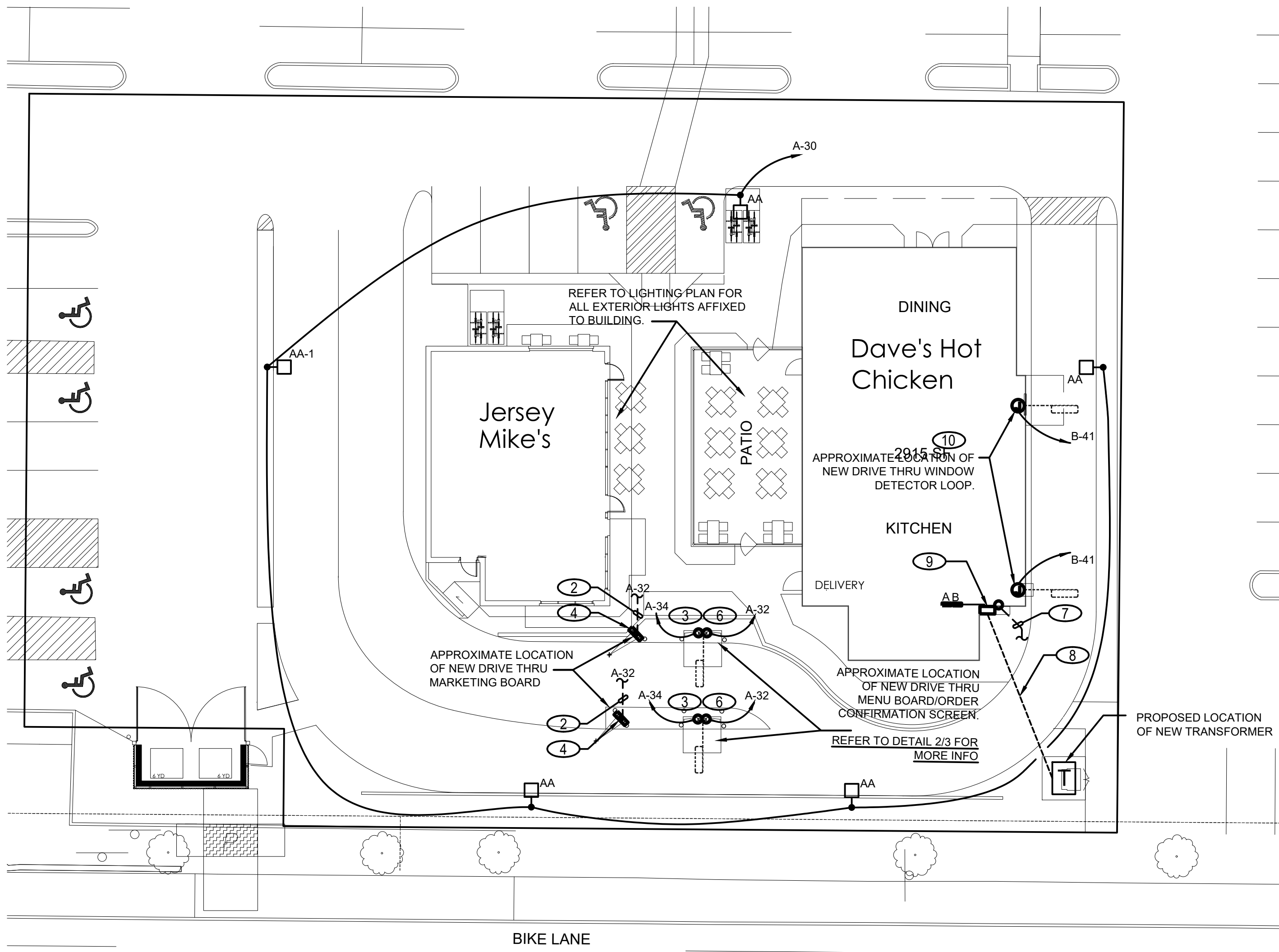




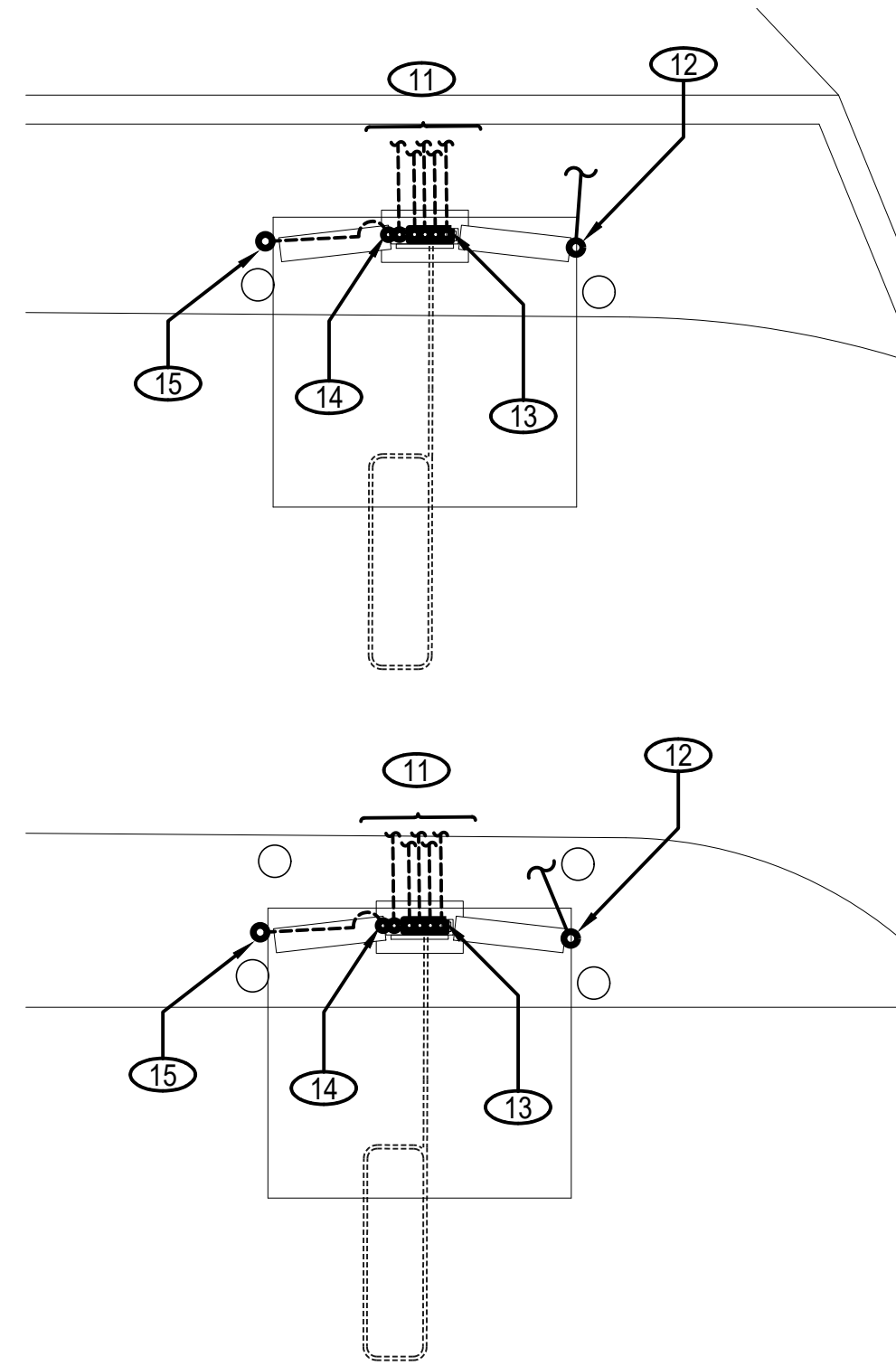
2 MENU BOARD CONDUIT DETAIL  
SCALE: 1/4"=1'-0"

- GENERAL NOTES
1. THE SCOPE OF THE ELECTRICAL WORK SHALL INCLUDE FURNISHING, INSTALLING & TESTING ALL ELECTRICAL SYSTEMS FOR A COMPLETE & FULLY OPERABLE INSTALLATION COMPLY WITH LATEST VERSION OF ALL APPLICABLE NATIONAL, STATE & LOCAL CODES.
  2. LOCATIONS OF NEW ELECTRICAL SYSTEM, EQUIPMENT & DEVICES SHALL BE FIELD VERIFIED BY THE TENANT'S GENERAL CONTRACTOR (T.G.C.).
  3. CONTRACTOR SHALL VISIT THE SITE & FAMILIARIZE HIMSELF WITH THE NEW CONDITIONS UNDER WHICH HE IS TO PERFORM HIS WORK. NO ALLOWANCE WILL BE MADE FOR FAILURE TO COMPLY.
  4. CONTRACTOR SHALL FIELD VERIFY ALL CONDITIONS & SHALL IMMEDIATELY NOTIFY THE OWNER'S PROJECT MANAGER OF ANY DISCREPANCIES.
  5. COORDINATE LOCATIONS & ROUTING OF FEEDERS TO PANELBOARDS WITH ALL OTHER TRADES & PROVIDE ALL NECESSARY APPURTENANCES AS REQUIRED.
  6. WHERE THE WORD "PROVIDE" IS USED, THE WORD IS UNDERSTOOD TO MEAN "THE ELECTRICAL CONTRACTOR SHALL FURNISH, INSTALL & MAKE FINAL CONNECTION TO THE EQUIPMENT", UNLESS OTHERWISE NOTED.
  7. FIELD VERIFY ALL UTILITIES IN THE AREA PRIOR TO TRENCHING.
  8. ALL CONDUITS, CONDUCTORS & JUNCTION BOXES INSTALLED UNDERGROUND SHALL BE WET LOCATION RATED.
  9. ALL UNDERGROUND CONDUITS SHALL BE INSTALLED IN COMPLIANCE WITH SECTION 300.5 OF THE C.E.C.
  10. CONDUIT BENDS - NUMBER OF BENDS IN ONE RUN. THERE SHALL NOT BE MORE THAN THE EQUIVALENT OF FOUR QUARTER BENDS (360 DEGREES TOTAL) BETWEEN PULL POINTS (I.E. JUNCTION BOX) CONTRACTOR TO PROVIDE ADDITIONAL JUNCTION BOXES AS NEEDED. (NOTE: ALL JUNCTION BOXES SHALL BE RATED (PER CODE) FOR THE LOCATION FOR WHICH THEY ARE INSTALLED I.E. W.P. &/OR TRAFFIC-RATED).

- KEYED NOTES: #
1. FOR CONTINUATION OF BRANCH CIRCUITRY, SEE SHEET E200 LIGHTING PLAN AND DETAILS FOR CONTROL. E.C. TO USE HEAVY-DUTY 3#10 GAUGE WIRE LISTED FOR WET LOCATION FOR THE ENTIRE RUN.
  2. E.C. TO ROUTE CONDUIT/WIRE MIN. OF 24" DEEP.
  3. FOR CONNECTION TO MENU BOARD DRIVER. VERIFY EXACT LOCATION & POWER REQUIREMENTS PRIOR TO ANY WORK. COORDINATE INSTALLATION WITH SIGN VENDOR & OWNER.
  4. FOR CONNECTION TO DRIVE-THRU'S DIRECTIONAL SIGN LED DRIVER. VERIFY EXACT LOCATION & POWER REQUIREMENTS PRIOR TO ANY WORK. COORDINATE INSTALLATION WITH SIGN VENDOR & OWNER.
  5. NOT CURRENTLY USED
  6. FOR CONNECTION TO DRIVE-THRU'S MENU WEATHER CANOPY LED DRIVER. VERIFY EXACT LOCATION & POWER REQUIREMENTS PRIOR TO ANY WORK. COORDINATE INSTALLATION WITH SIGN VENDOR & OWNER.
  7. (2) 2" CONDUITS STUB-UP FOR TELEPHONE & CATV. EXTEND CONDUITS TO TELEPHONE DEMARCATION POINT. FIELD VERIFY.
  8. 120/208V, 3PH, 4W, 400A ELECTRICAL SERVICE FROM UTILITY TRANSFORMER TO NEW CT CABINET. 2 SETS OF 4 #350 KCMIL.
  9. NEW "MSB" BY EC 120/208V, 3PH 4W, 400A.
  10. CONTRACTOR TO PROVIDE/INSTALL 1" DETECTOR LOOP CONDUIT WITH PULL WIRE AT DRIVE THRU WINDOW (FIELD VERIFY EXACT LOCATION). PROVIDE W.P. JUNCTION BOX (SIZED PER CODE) AS NEEDED FOR CONNECTION TO INTERIOR CONDUIT STUB-OUT LOCATION. DETECTOR LOOP WIRING PROVIDED & INSTALLED BY OTHERS.
  11. CONTRACTOR TO TRENCH CONDUIT(S) FROM OWNER'S APPROVED STUB-OUT LOCATION TO NEW DRIVE THRU EQUIPMENT. CONTRACTOR SHALL FIELD VERIFY EXACT EQUIPMENT LOCATION WITH EQUIPMENT PROVIDER PRIOR TO START OF WORK. ROUTING OF CONDUIT SHALL BE DETERMINED IN FIELD. PROVIDE ALL NECESSARY DEVICES.
  12. CONTRACTOR TO PROVIDE/INSTALL 1" DETECTOR LOOP CONDUIT WITH PULL WIRE & STUB-UP INTO MENU BOARD BASE FOR EXTENSION TO DAVE'S HOT CHICKEN TENANT SPACE (FIELD VERIFY EXACT LOCATION). DETECTOR LOOP WIRING PROVIDED & INSTALLED BY OTHERS.
  13. CONTRACTOR TO PROVIDE (5) 1" EMPTY CONDUITS WITH PULL WIRES STUB-UP INTO DRIVE THRU MENU BOARD BASE. REFER TO DETAIL 2 ON THIS SHEET. CONTRACTOR TO STUB-UP CONDUITS INSIDE BASE OF DRIVE THRU EQUIPMENT AS DIRECTED BY DRIVE THRU EQUIPMENT/SIGNAGE INSTALLER. VERIFY FIELD DETECTOR LOOP WIRING CONDUIT STUB-UP LOCATION &/OR CONNECTION POINT (TO MENU BOARD SPEAKER TERMINAL DETECTOR LOOP) WITH DRIVE THRU EQUIPMENT INSTALLER. SEE LIGHTING PLAN SHEETS E100 FOR ADDITIONAL INFORMATION. (NOTE: DATA, AUDIO & DETECTOR LOOP WIRING PROVIDED & INSTALLED BY OTHERS.)
  14. CONTRACTOR TO PROVIDE CONDUIT & CONDUCTORS FOR POWER TO NEW DRIVE THRU MENU BOARD (LIGHTING), MENU BOARD CANOPY (LIGHTING) & ORDER CONFIRM. SCREEN (POWER). CONTRACTOR TO STUB-UP CONDUIT/CONDUCTORS INSIDE BASE OF DRIVE THRU EQUIPMENT AS DIRECTED DRIVE THRU EQUIPMENT INSTALLER. TERMINATE CONDUCTORS IN JUNCTION BOX (SIZE PER CODE) FOR FUTURE CONNECTION TO MENU BOARD (LIGHTING), MENU BOARD CANOPY (LIGHTING) & ORDER CONFIRM. SCREEN (POWER). FINAL CONNECTIONS TO DRIVE THRU EQUIPMENT PROVIDE BY DRIVE THRU EQUIPMENT INSTALLER.
  15. CONTRACTOR TO PROVIDE (1) 1" CONDUIT WITH PULL WIRE STUBBED DOWN THRU MENU BOARD CONCRETE BASE, ROUTED UNDERGROUND & STUBBED-UP INTO CONCRETE BASE FOR MENU BOARD CANOPY SUPPORT POLE. COORDINATE EXACT STUB-UP LOCATION & ROUTING OF CONDUIT WITH DRIVE THRU EQUIPMENT INSTALLER.



1 OVERALL SITE PLAN  
SCALE: 1/16"= 1'-0"



3 MENU BOARD ENLARGED PLAN  
SCALE: 1/4"=1'-0"