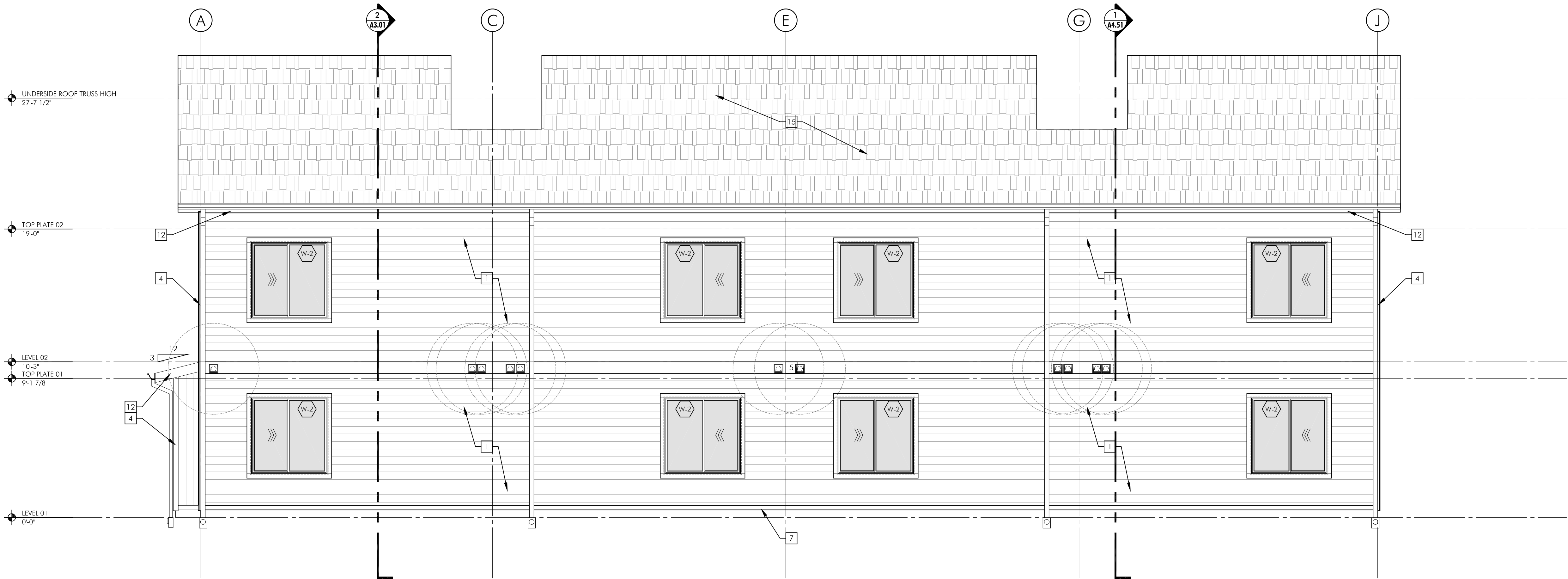


1 NORTH ELEVATION



2 EAST ELEVATION

ELEVATION NOTES:

- 1 HORIZONTAL LAPPED FIBER CEMENT SIDING, 6" EXPOSURE, COLOR: PEPPERCORN, SW7674
- 2 HORIZONTAL LAPPED FIBER CEMENT SIDING, 6" EXPOSURE, COLOR: CLASSIC FRENCH GRAY, SW0077
- 3 VERTICAL FIBER CEMENT BOARD & BATT, COLOR: BRICK PAVER, SW7599
- 4 3/4" TRIM BOARD AT ALL EXTERIOR CORNERS AND AROUND ALL OPENINGS, COLOR: BLACK MAGIC, SW6991
- 5 9/4" TRIM BOARD, COLOR: BLACK MAGIC, SW6991
- 6 7/4" TRIM BOARD, COLOR: BLACK MAGIC, SW6991
- 7 3/2" TRIM BOARD, COLOR: BLACK MAGIC, SW6991
- 8 FIBER CEMENT PANEL SIDING, COLOR: PEPPERCORN, SW7674
- 9 STAIR LANDING GUARDRAIL, SEE DETAIL 3/ A4.52
- 10 WALL PACK LIGHT. SEE LIGHT SCHEDULE ON A6.01
- 11 FIBERGLASS CLAD ENTRY OR PATIO DOOR, PAINTED, COLOR: ACCENT COLOR, TBD
- 12 2x8 WOOD FASCIA BOARD, PAINTED, COLOR: BLACK MAGIC, SW6991
- 13 PTHP UNIT
- 14 WOOD BALCONY PER STRUCTURAL MIN 42" HEIGHT FOR GUARDRAILS. PROVIDE CORRUGATED METAL PANELS WITH VERTICAL SUPPORTS MAX 4'-0" APART
- 15 COMPOSITION SHINGLE ROOFING
- 16 DOOR TO RISER ROOM, PROVIDE EXTERIOR SIGNAGE MOUNTED ADJACENT TO DOOR
- 17 FDC LOCATION WITH SIGNAGE