

**PRELIMINARY DRAINAGE REPORT  
FOR**

**Coburn Grand View Apartments  
Salem, Oregon**

**Prepared For:  
Westwood Homes, LLC  
12700 NW Cornell Road  
Portland, Oregon 97229**

*November 19, 2021*



1155 13<sup>th</sup> Street SE  
Salem OR 97302

PHONE: (503) 363-9227  
FAX: (503) 364-1260  
EMAIL: [mhendrick@mtengineering.net](mailto:mhendrick@mtengineering.net)



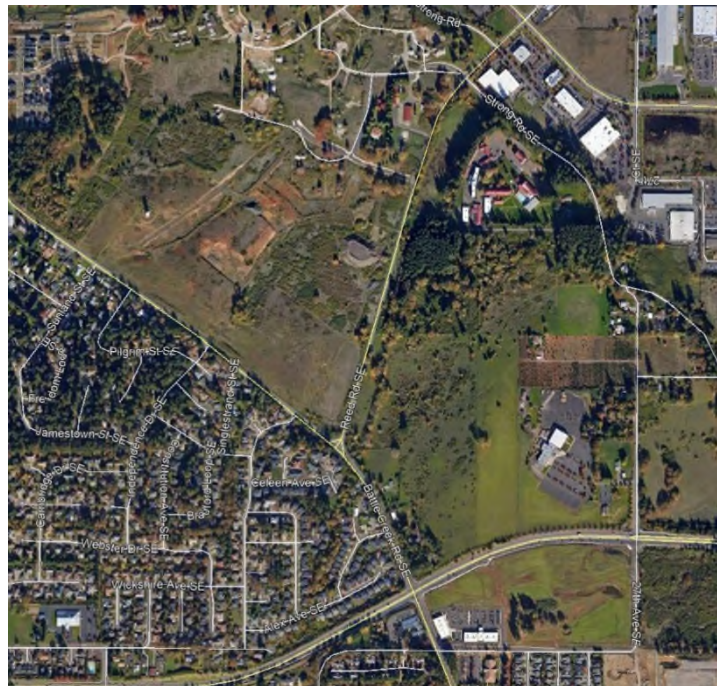
## Contents

Introduction .....	1
Existing Conditions.....	2
Soils .....	2
Infiltration .....	2
Water Quality Methodology .....	2
Water Quality Analysis.....	2
Water Quality Design .....	2
Stormwater Quantity Analysis – Basin 1.....	3
Stormwater Quality Analysis.....	5
Conclusion.....	5

Appendix A	Maps
Appendix B	Soils Report
Appendix C	Time of Concentration
Appendix D	Stormwater Quantity Analysis
Appendix E	Stormwater Quality Analysis

## INTRODUCTION

The Coburn Grand View Apartments is a portion of a 212-lot subdivision approved under the City of Salem Planning Case No. SUB-ADJ19-08. A subdivision modification has been submitted to reduce to 177-lots and remove a portion of the site for multi-family development. The apartment portion was created under City of Salem Planning case No. PLA 20-24. Planning Case No. CPC-NPC-ZC20-07 was approved to allow for a multi-family development. The site is located north of Kuebler Blvd and east of Reed Road SE & Battle Creek Road SE. The parcel of land to be developed is Tax Lots 100, 202, 400 & 601 of Marion County Assessor's Map 08 3W 11D. A vicinity map and supporting maps are in Appendix A of this report.



**Project Site**

Green Stormwater Infrastructure (GSI) to the Maximum Extent Feasible (MEF) is being used per City of Salem Administrative Rules, Chapter 109, Division 004, Stormwater System, Appendix 4E and Ordinance No. 8-20 (Standards). All facilities will be constructed to meet the appropriate City of Salem standards. It should be noted that this development lies within **Basin #1** as identified in the Preliminary Stormwater Management Plan for the Coburn Grand View Estates subdivision.



## **EXISTING CONDITIONS**

The 13.6-acre Basin #1 site is irregular in the shape. Surface conditions consists of grass, brush, and minimal trees. There are no identified wetlands, drainage ways, or sensitive areas located on the property. A topographical high point ridge is located on the easterly side of the site. Drainage from this high point flows northerly and westerly. The maximum relief is approximately 132-feet with a high point elevation of 418. The abutting properties are zoned single family residential, residential agriculture, commercial retail, public health, and mixed use with public improvements that include storm water conveyance systems. Appendix A contains multiple maps of the site.

## **Soils**

The Natural Resources Conservation Service (NRCS) Soil Resource Report for Marion County was used to determine a Hydrological Soil Group classification for runoff calculations. The report identifies the site soils to be McAlpin, Nekia and Silverton soils. All the soils are in the hydrologic soil group C. The report is in Appendix B.

## **Infiltration**

An infiltration test was performed at the site to determine percolation rate of the soil. Test results indicate rates below 0.5 inches. Due to low infiltration rates and steep slopes, infiltration will not be used for this site Appendix B contains an excerpt from the geotechnical report with recommended infiltration rates.

## **WATER QUALITY METHODOLOGY**

Because of the poor percolation rates of the soils and natural steep slopes that dominate the site, green stormwater facilities are designed as volume control facilities with filtration.

## **WATER QUALITY ANALYSIS**

Water quality flow rates will be calculated with HydroCAD 10.10. The SCS TR-20 Unit Hydrograph method will be used to generate the hydrographs. A Type 1A storm and a 24-hour rainfall depth of 1.38 inches per hour will be used to determine the water quality flow rate.

## **WATER QUALITY DESIGN**

The proposed combination facilities will provide water quality treatment by allowing for the removal of pollutants through sedimentation, adsorption onto surrounding vegetation, filtration, and biological uptake. The combination facility will be designed per the City of Salem designed standards.



## STORMWATER QUANTITY ANALYSIS – BASIN 1

Stormwater quantity (Flow Control) is proposed to be handled by on-site detention. Runoff from the developed basin will be routed to an off-site regional facility at the intersection of Battle Creek Road and proposed M Street, that ultimately controls runoff to pre-developed flow rates. This regional facility is a combination facility that will detain and treat stormwater runoff.

Per Subsection 4.2(p)(3)(A) of the standards and Ordinance No. 8-20, one-half of the post development peak runoff rate of the two-year storm must be equal to or less than one-half of the peak runoff rate of the pre-developed two-year, 24-hour storm. This also applies to the 10, 25 and 100-year, 24-hour storm events.

The pre-developed flow rates were calculated using HydroCAD 10.10. Table 1 below lists the 24-hour rainfall depths used for the analysis of each storm event. Please note that the 2-year event was halved and then analyzed.

**Table 1**

Storm Event	24-hour Rainfall Depth (in)
2	2.2
10	3.2
25	3.6
100	4.4

For the pre-developed conditions, a time of concentration of 23.4 minutes was calculated for the basin. The time of concentration data is in Appendix C. The calculations are incorporated in the HydroCAD output located in Appendix D. The entire area was classified as "City of Salem Pre-Development, HSG C" with a Curve Number (CN) of 72. A pre-developed basin map is in Appendix A.

The SCS TR-20 Unit Hydrograph method was used to generate the hydrographs. A Type 1A rainfall distribution was used with the above rainfall depths. Table 2 below identifies the allowable pre-developed release rate for each storm event.

**Table 2**

Storm Event	Basin #1 Allowable Release Rate (cfs)
1/2 of 2-year	0.04
10-year	1.87
25-year	2.67
100-year	4.46

The post-developed flow rates were calculated using HydroCAD 10.10. A time of concentration of 15 minutes was assumed for the basin based on the assumed cover conditions. The calculations are incorporated in the HydroCAD output located in Appendix D. Basin #1 was classified as 60 percent "Impervious, HSG C" with a CN of 98 and 40 percent "> 75% Grass cover, HSG C" with a CN of 74. This was based on code setback requirements, landscaping & open space requirements, and City street section standards. Table 3 below lists the CN values for the developed areas that will contribute storm water runoff to the detention systems. A developed basin map is in Appendix A. Surface areas were determined using AutoCAD.


**Table 3**

Basin	Impervious Area (Ac) CN = 98	Landscape Area (Ac) CN = 74	TOTAL Area (Ac)	Composite CN
<b>Basin #1</b>	8.15	5.43	13.58	88

Table 4 below identifies the calculated detention volume requirements for each storm event along with release rates. The required detention was determined by using HydroCAD.

**Table 4**

Storm Event	Basin #1 Allowable Release Rate (cfs)	Basin #1 Release Rate (cfs)	Basin #1 Detention Volume (cf)	Provided Basin #1 Detention Volume (cf)
1/2 of 2-year	0.04	0.04	13,371	71,069
10-year	1.87	1.86	27,959	71,069
25-year	2.67	2.58	32,137	71,069
100-year	4.46	4.26	38,808	71,069



The proposed detention systems will be detention pond facilities located near the lowest point in each basin to maximize the capture of runoff. A basin map has been provided in Appendix A showing the locations of the detention ponds.

### **STORMWATER QUALITY ANALYSIS**

Water quality flow rates were calculated using HydroCAD 10.10. The SCS TR-20 Unit Hydrograph method was used to generate the hydrographs. A Type 1A rainfall distribution was used with a 1.38 rainfall depth. Appendix E contains the analysis.

All detention facilities will incorporate filtration sections and will be constructed per City of Salem standards.

### **CONCLUSION**

Based on the presented information, the proposed design will meet the water quality and quantity standards. If there are any questions regarding this analysis or the design, please contact Matthew Hendrick at Multi/Tech Engineering by phone at (503) 363-9227 or via e-mail at [mhendrick@mtengineering.net](mailto:mhendrick@mtengineering.net).



## Appendix A

~~08 3W 11D~~

08 3W 11D  
SALEM

MARION COUNTY, OREGON  
SE1/4 SEC11 T8S R3W W.M.  
SCALE 1" = 200'

### LEGEND

## LINE TYPES

Taxlot Boundary	Historical Boundary
Road Right-of-Way	Easement
Railroad Right-of-Way	Railroad Centerline
Private Road ROW	Textcode Line
Subdivision/Plat Bndry	Map Boundary
Waterline - Taxlot Bndry	Waterline - Non Bndry

## CORNER TYPES

+ 1/16TH Section Cor.      1/4 Section Cor.  
 ◎ DLC Corner      16, 15  
                                  21, 22 Section Corner

## NUMBERS

Tax Code Number  
000 00 00 0

**Acreage**  
0.25 AC

All acres listed are Net Acres, excluding any portions of the taxlot within public ROW's.

## NOTES

**Tick Marks:** A tick mark in the road indicates that the labeled dimension extends into the public ROW



CANCELLED NUMBERS

201	1400	2302
301	1500	2303
501	1600	
502	1601	
600	1700	
603	1800	
700A1	1801	
701	1900	
702	1901	
703	2000	
800	2001	
801	2002	
900	2101	
901	2102	
902	2201	
1001	2300	
1300	2301	

DISCLAIMER: THIS MAP WAS PREPARED  
FOR ASSESSMENT PURPOSES ONLY

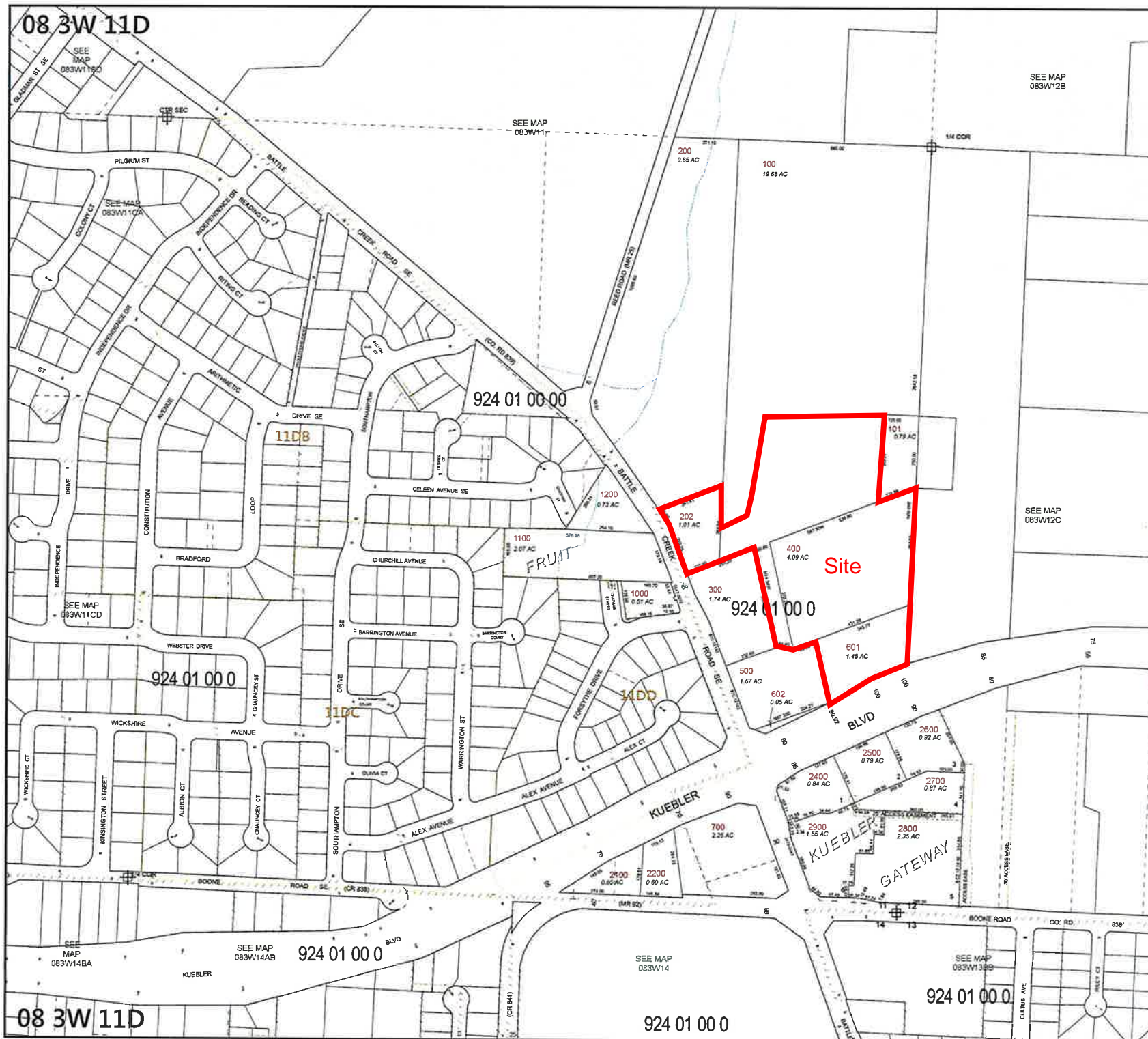


Assessors Office  
Cartography Dept

FOR ADDITIONAL MAPS VISIT OUR WEBSITE AT  
[www.co.marion.or.us](http://www.co.marion.or.us)

PLOT DATE: 1/24/2018

SALEM  
08 3W 11D





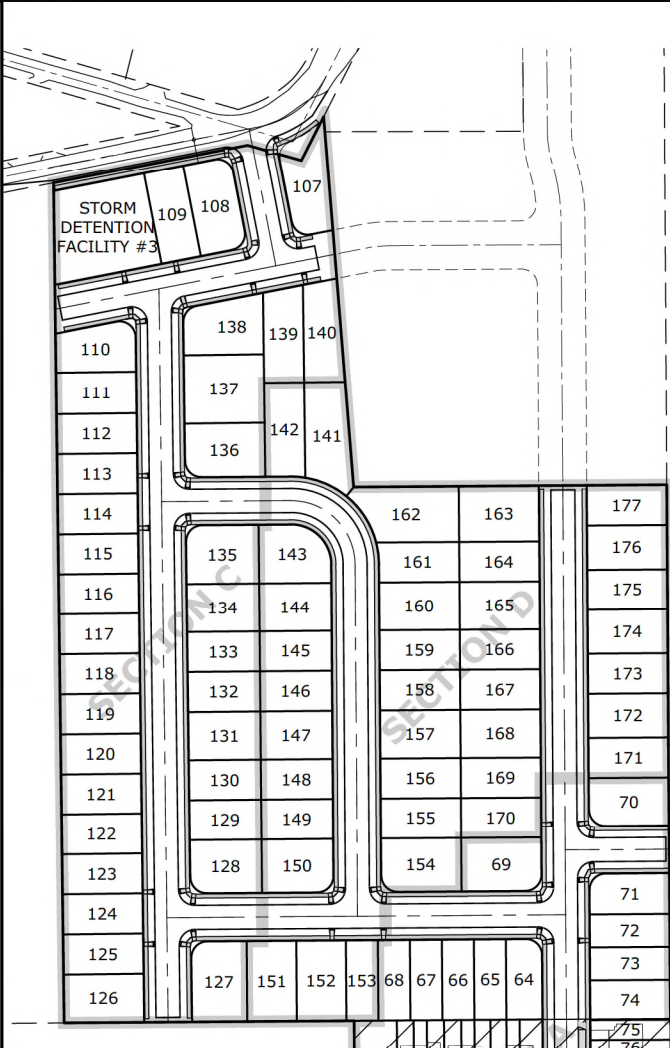
TOTAL PARCEL SIZE:  
DEVELOPABLE AREA — 32.545 Ac.  
NUMBER OF UNITS — 170  
DENSITY — 4.51 UNITS/AC.  
LARGEST LOT — 13,195 S.F.  
SMALLEST LOT — 5,500 S.F.  
AVERAGE — 6,753 S.F.

SECTION A:  
DEVELOPABLE AREA — 13.492 Ac.  
NUMBER OF UNITS — 76  
DENSITY — 5.63 UNITS/AC.  
LARGEST LOT — 10,658 S.F.  
SMALLEST LOT — 1,982 S.F.  
AVERAGE — 5,038 S.F.

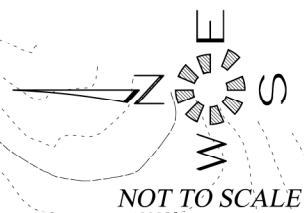
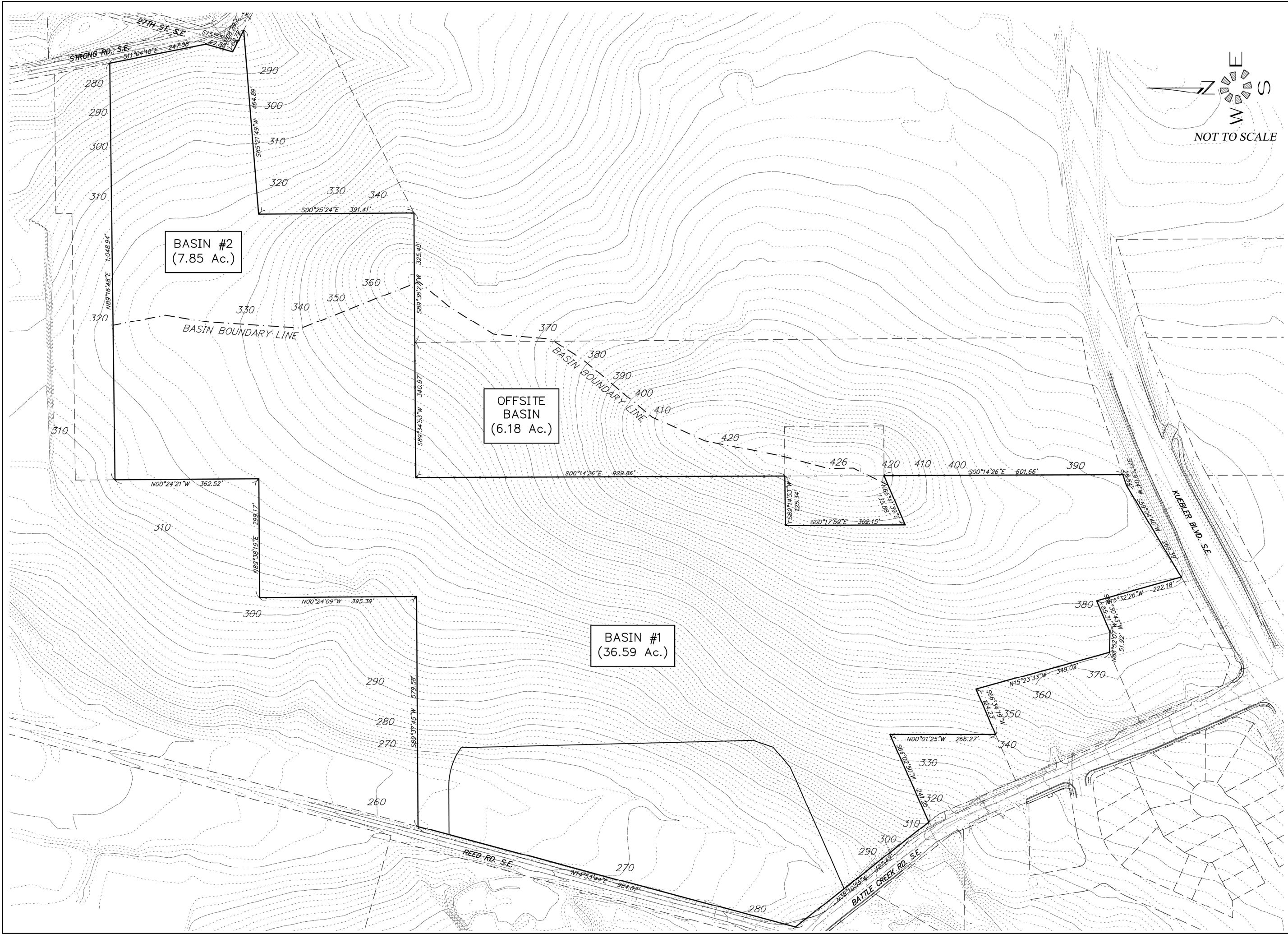
SECTION B:  
DEVELOPABLE AREA — 6.068 Ac.  
NUMBER OF UNITS — 24  
DENSITY — 3.96 UNITS/AC.  
LARGEST LOT — 17,940 S.F.  
SMALLEST LOT — 4,951 S.F.  
AVERAGE — 8,559 S.F.

SECTION C:  
DEVELOPABLE AREA — 6.828 Ac.  
NUMBER OF UNITS — 34  
DENSITY — 4.98 UNITS/AC.  
LARGEST LOT — 10,658 S.F.  
SMALLEST LOT — 4,484 S.F.  
AVERAGE — 5,499 S.F.

SECTION D:  
DEVELOPABLE AREA — 6.155 Ac.  
NUMBER OF UNITS — 36  
DENSITY — 5.85 UNITS/AC.  
LARGEST LOT — 8,353 S.F.  
SMALLEST LOT — 4,001 S.F.  
AVERAGE — 5,492 S.F.







EXISTING CONDITIONS  
BASIN MAP

COBURN GRAND VIEW ESTATES

NO CHANGES, MODIFICATIONS  
OR REPRODUCTIONS TO BE  
MADE WITHOUT THE WRITTEN  
AUTHORIZATION FROM THE  
DESIGN ENGINEER.  
DIMENSIONS & NOTES TAKE  
PRECEDENCE OVER  
GRAPHICAL REPRESENTATION.

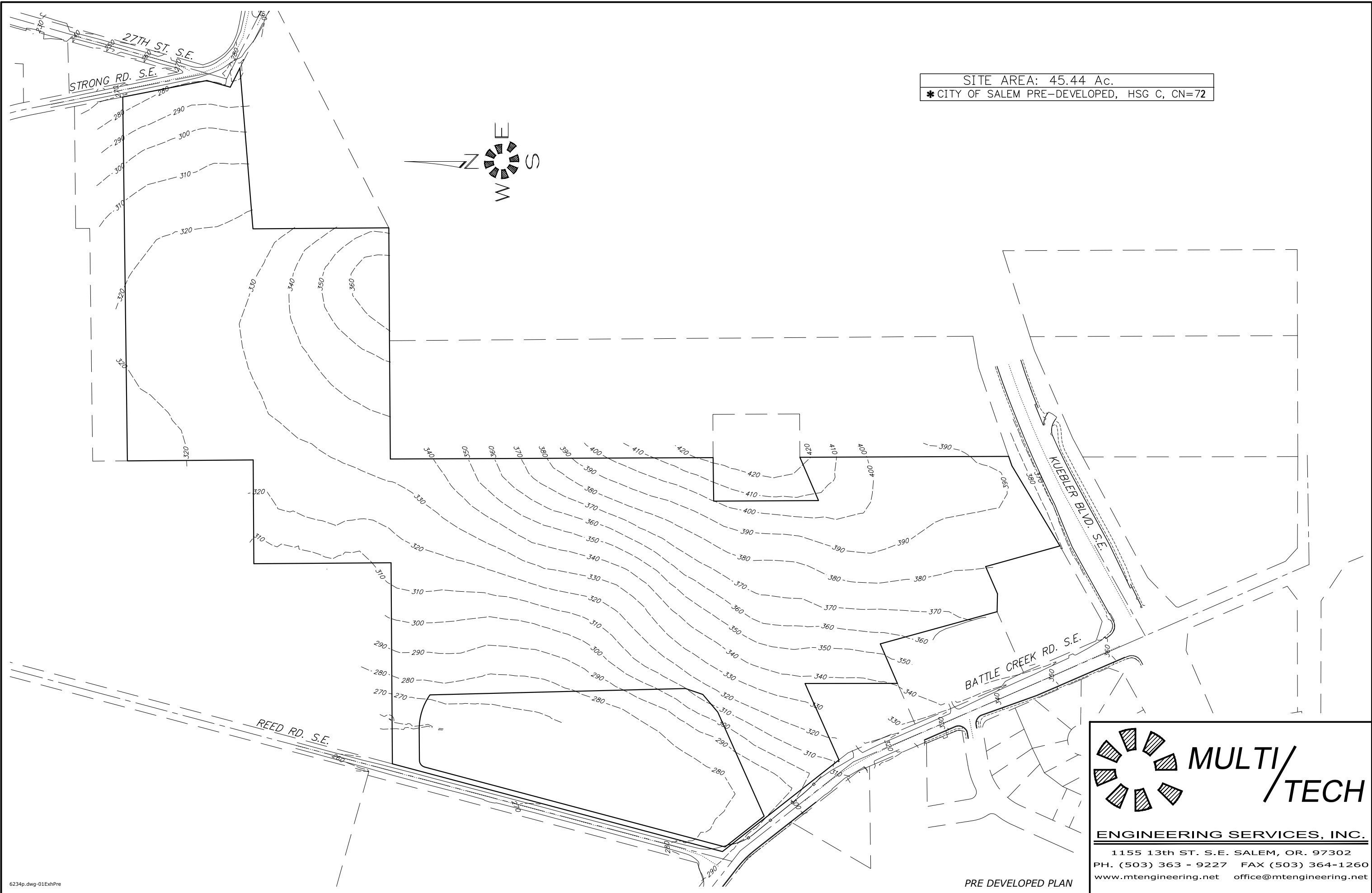
Design:	M.D.G.
Drawn:	P.H.S.
Checked:	J.J.G.
Date:	JUNE 2018
Scale:	AS SHOWN

JOB # 6234
------------

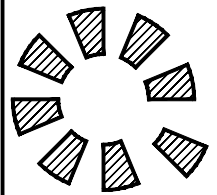
J:\6200-6234\6234-4448.mxd 12/12/2018 5:16:29 PM P:\audrey



J:\6200-6299\6234-ReedRoad\Draw v18\6234p.dwg, 6/7/2019 9:58:35 AM, P.Saunders



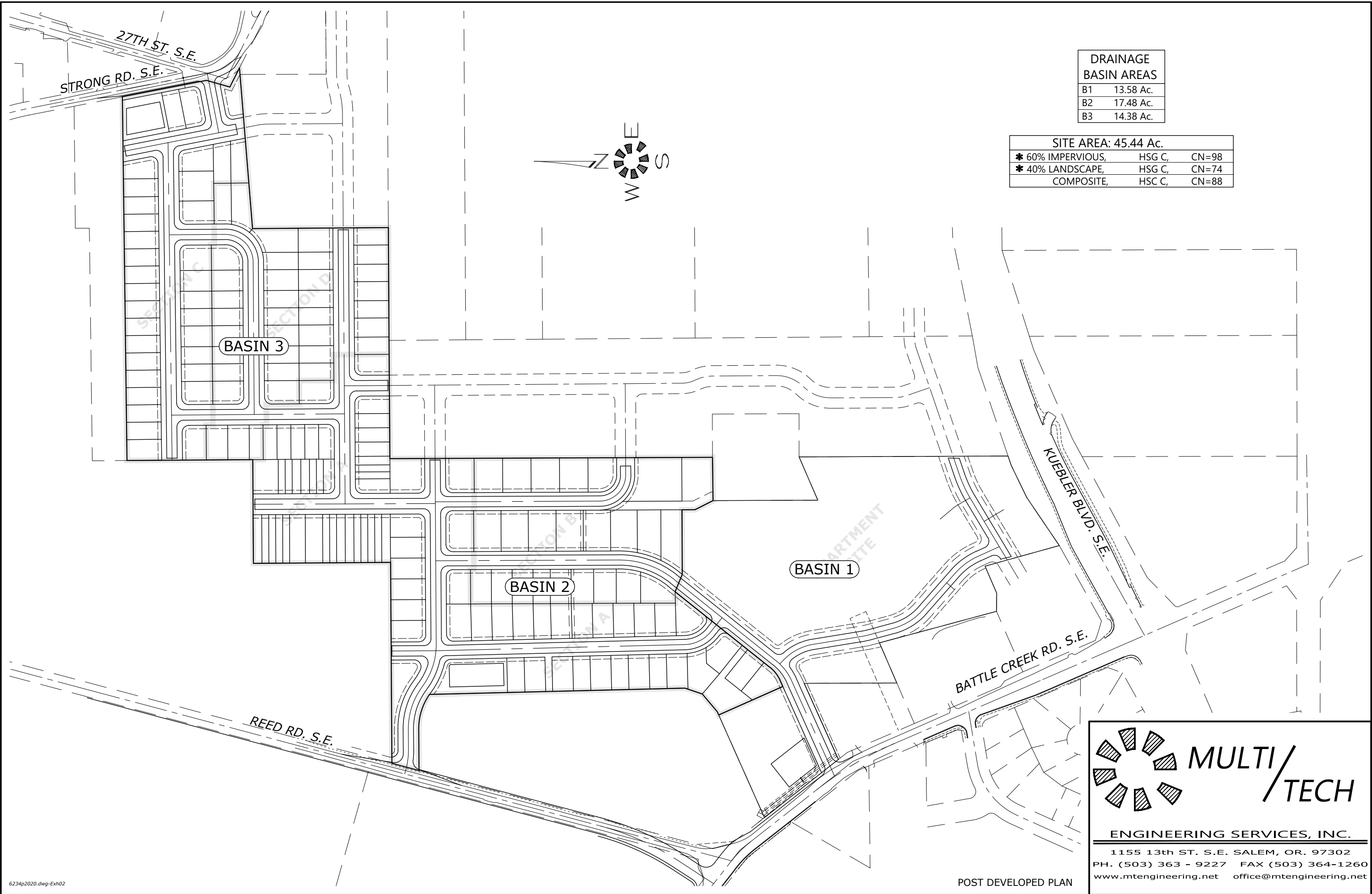
SITE AREA: 45.44 Ac.  
\* CITY OF SALEM PRE-DEVELOPED, HSG C, CN=72

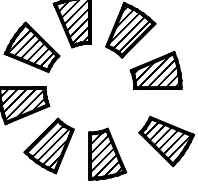


**MULTI/TECH**

**ENGINEERING SERVICES, INC.**

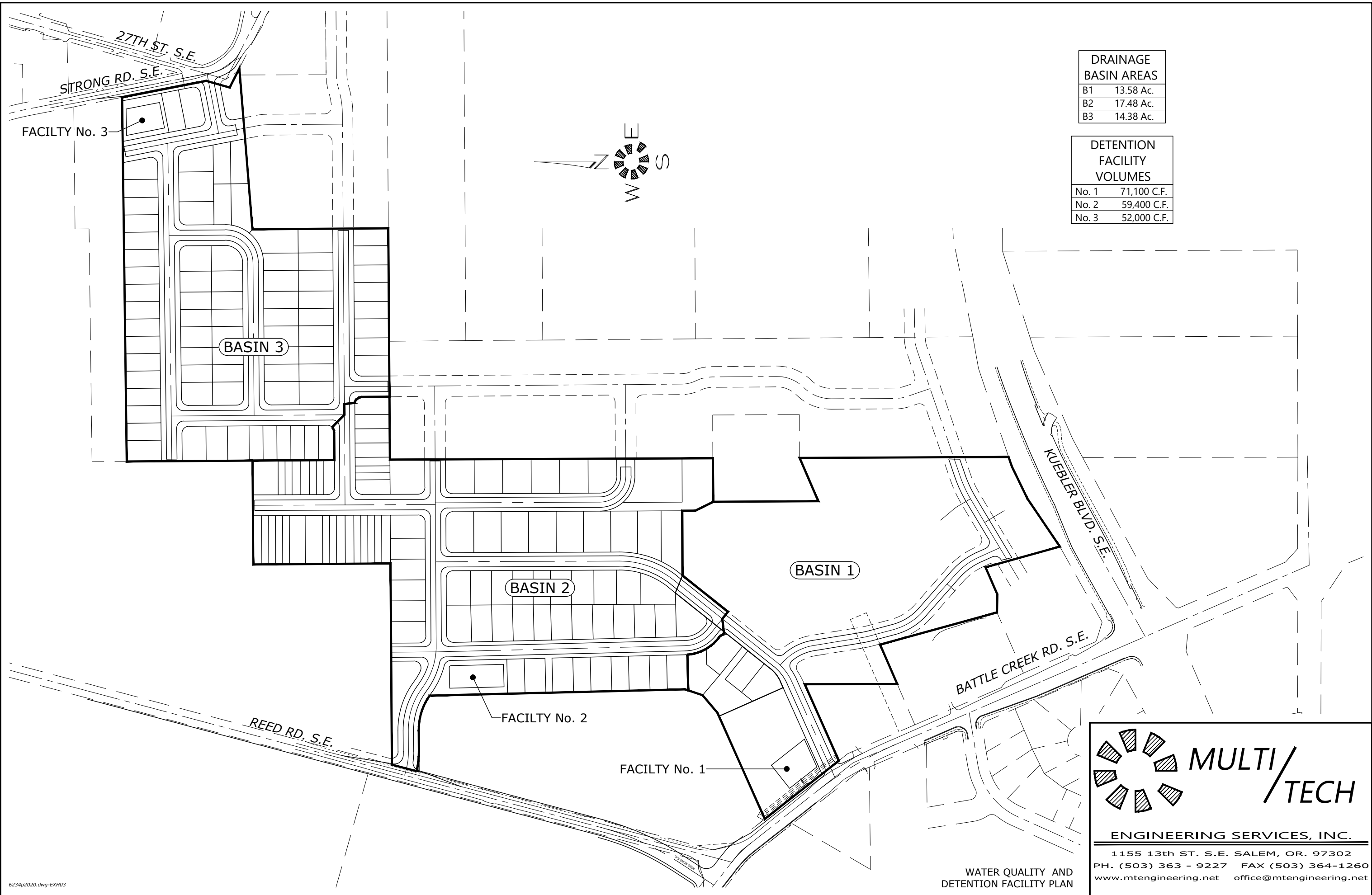
1155 13th ST. S.E. SALEM, OR. 97302  
PH. (503) 363 - 9227 FAX (503) 364-1260  
www.mtengineering.net office@mtengineering.net



 **MULTI/TECH**

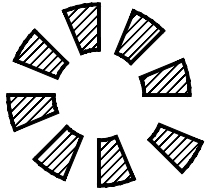
**ENGINEERING SERVICES, INC.**

1155 13th ST. S.E. SALEM, OR. 97302  
PH. (503) 363 - 9227 FAX (503) 364-1260  
www.mtengineering.net office@mtengineering.net



DRAINAGE BASIN AREAS	
B1	13.58 Ac.
B2	17.48 Ac.
B3	14.38 Ac.

DETENTION FACILITY VOLUMES	
No. 1	71,100 C.F.
No. 2	59,400 C.F.
No. 3	52,000 C.F.



**MULTI/**  
**TECH**

**ENGINEERING SERVICES, INC.**

1155 13th ST. S.E. SALEM, OR. 97302

PH. (503) 363 - 9227 FAX (503) 364-1260

[www.mtengineering.net](http://www.mtengineering.net) [office@mtengineering.net](mailto:office@mtengineering.net)

WATER QUALITY AND  
DETENTION FACILITY PLAN



## Appendix B



United States  
Department of  
Agriculture

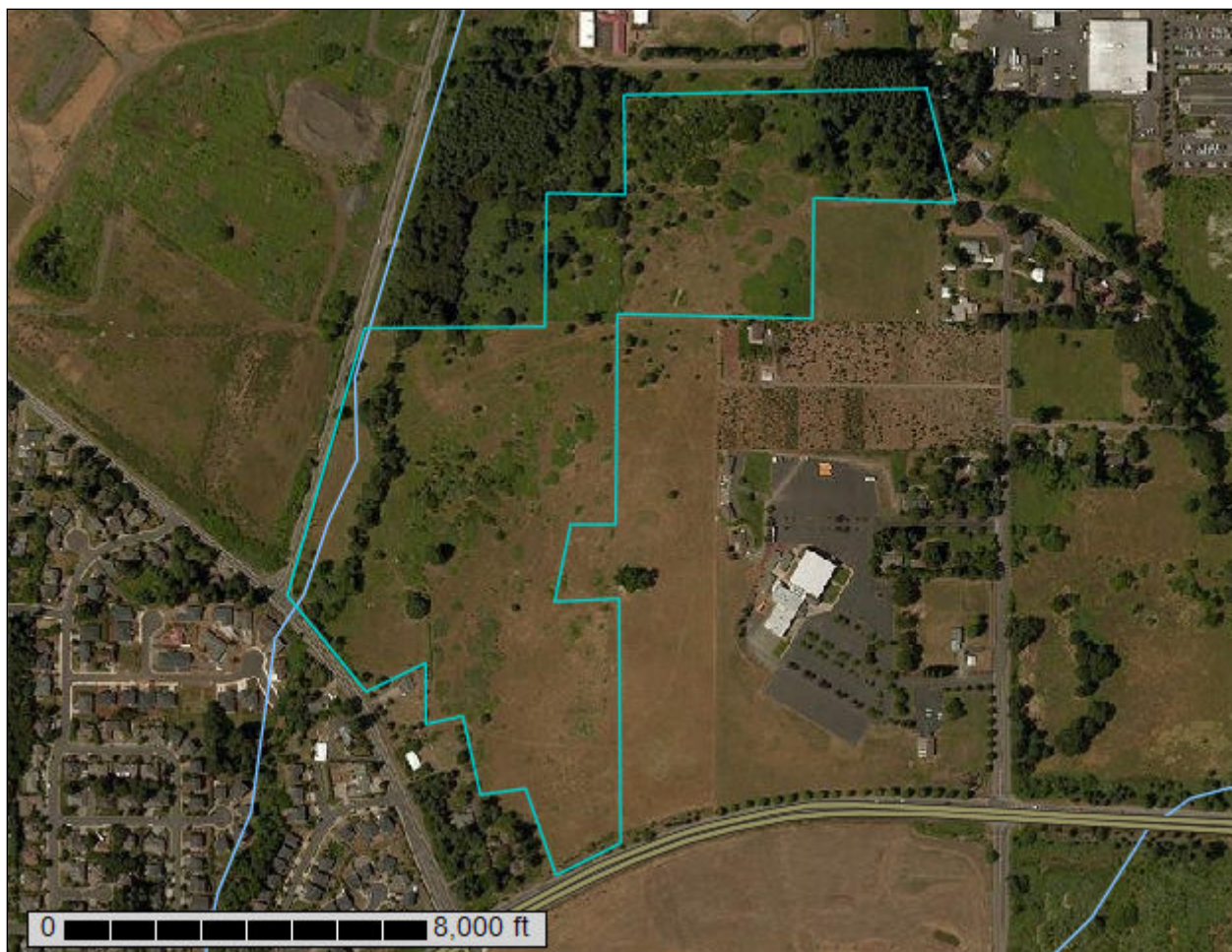
**NRCS**

Natural  
Resources  
Conservation  
Service

A product of the National  
Cooperative Soil Survey,  
a joint effort of the United  
States Department of  
Agriculture and other  
Federal agencies, State  
agencies including the  
Agricultural Experiment  
Stations, and local  
participants

# Custom Soil Resource Report for **Marion County Area, Oregon**

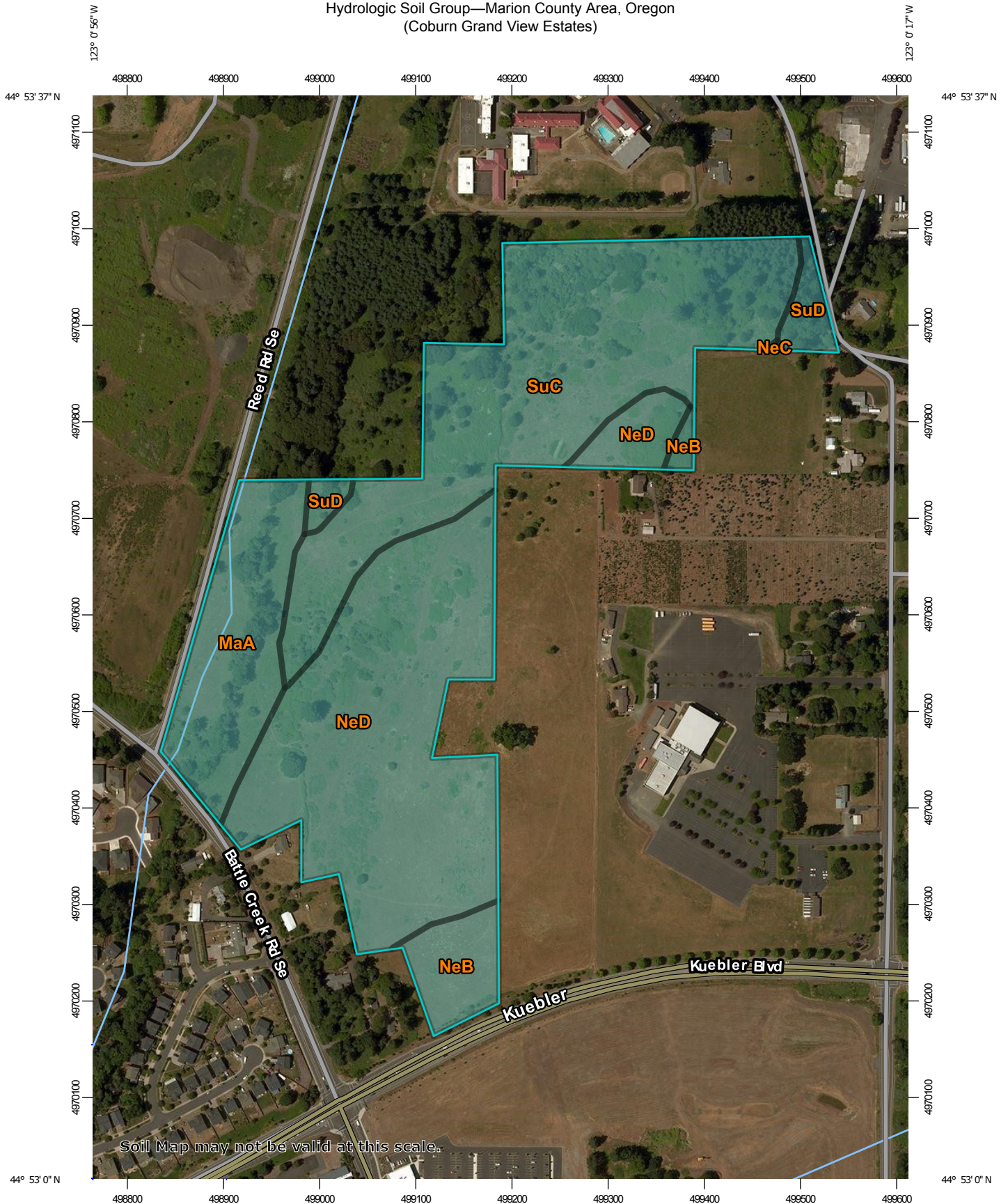
**Coburn Grand View Estates**



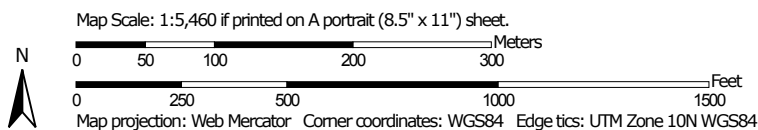
October 1, 2018



# Hydrologic Soil Group—Marion County Area, Oregon (Coburn Grand View Estates)



Soil Map may not be valid at this scale.



**Natural Resources  
Conservation Service**

Web Soil Survey  
National Cooperative Soil Survey

10/1/2018  
Page 1 of 4

Hydrologic Soil Group—Marion County Area, Oregon  
(Coburn Grand View Estates)

## MAP LEGEND

### Area of Interest (AOI)









 Area of Interest (AOI)

### Soils

#### Soil Rating Polygons





 A  
 A/D  
 B  
 B/D  
 C  
 C/D  
 D  
 Not rated or not available

#### Soil Rating Lines

 A  
 A/D  
 B  
 B/D  
 C  
 C/D  
 D  
 Not rated or not available

#### Soil Rating Points






 A  
 A/D  
 B  
 B/D

 C  
 C/D  
 D  
 Not rated or not available

### Water Features

 Streams and Canals

### Transportation

 Rails  
 Interstate Highways  
 US Routes  
 Major Roads  
 Local Roads

### Background

 Aerial Photography

## MAP INFORMATION

The soil surveys that comprise your AOI were mapped at 1:20,000.

Warning: Soil Map may not be valid at this scale.

Enlargement of maps beyond the scale of mapping can cause misunderstanding of the detail of mapping and accuracy of soil line placement. The maps do not show the small areas of contrasting soils that could have been shown at a more detailed scale.

Please rely on the bar scale on each map sheet for map measurements.

Source of Map: Natural Resources Conservation Service  
 Web Soil Survey URL:  
 Coordinate System: Web Mercator (EPSG:3857)

Maps from the Web Soil Survey are based on the Web Mercator projection, which preserves direction and shape but distorts distance and area. A projection that preserves area, such as the Albers equal-area conic projection, should be used if more accurate calculations of distance or area are required.

This product is generated from the USDA-NRCS certified data as of the version date(s) listed below.

Soil Survey Area: Marion County Area, Oregon  
 Survey Area Data: Version 15, Sep 18, 2018

Soil map units are labeled (as space allows) for map scales 1:50,000 or larger.

Date(s) aerial images were photographed: Jun 15, 2015—Jun 23, 2015

The orthophoto or other base map on which the soil lines were compiled and digitized probably differs from the background imagery displayed on these maps. As a result, some minor shifting of map unit boundaries may be evident.



## Hydrologic Soil Group

Map unit symbol	Map unit name	Rating	Acres in AOI	Percent of AOI
MaA	McAlpin silty clay loam, 0 to 3 percent slopes	C	7.2	13.8%
NeB	Nekia silty clay loam, 2 to 7 percent slopes	C	2.7	5.1%
NeC	Nekia silty clay loam, 7 to 12 percent slopes	C	0.0	0.1%
NeD	Nekia silty clay loam, 12 to 20 percent slopes	C	21.3	40.8%
SuC	Silverton silt loam, 2 to 12 percent slopes	C	19.6	37.4%
SuD	Silverton silt loam, 12 to 20 percent slopes	C	1.5	2.8%
<b>Totals for Area of Interest</b>			<b>52.2</b>	<b>100.0%</b>

## Description

Hydrologic soil groups are based on estimates of runoff potential. Soils are assigned to one of four groups according to the rate of water infiltration when the soils are not protected by vegetation, are thoroughly wet, and receive precipitation from long-duration storms.

The soils in the United States are assigned to four groups (A, B, C, and D) and three dual classes (A/D, B/D, and C/D). The groups are defined as follows:

Group A. Soils having a high infiltration rate (low runoff potential) when thoroughly wet. These consist mainly of deep, well drained to excessively drained sands or gravelly sands. These soils have a high rate of water transmission.

Group B. Soils having a moderate infiltration rate when thoroughly wet. These consist chiefly of moderately deep or deep, moderately well drained or well drained soils that have moderately fine texture to moderately coarse texture. These soils have a moderate rate of water transmission.

Group C. Soils having a slow infiltration rate when thoroughly wet. These consist chiefly of soils having a layer that impedes the downward movement of water or soils of moderately fine texture or fine texture. These soils have a slow rate of water transmission.

Group D. Soils having a very slow infiltration rate (high runoff potential) when thoroughly wet. These consist chiefly of clays that have a high shrink-swell potential, soils that have a high water table, soils that have a claypan or clay layer at or near the surface, and soils that are shallow over nearly impervious material. These soils have a very slow rate of water transmission.

If a soil is assigned to a dual hydrologic group (A/D, B/D, or C/D), the first letter is for drained areas and the second is for undrained areas. Only the soils that in their natural condition are in group D are assigned to dual classes.

## Rating Options

*Aggregation Method:* Dominant Condition

*Component Percent Cutoff:* None Specified

*Tie-break Rule:* Higher

### **Surface Drainage/Groundwater**

We recommend that positive measures be taken to properly finish grade the site so that drainage waters from the residential structures and landscaping areas as well as adjacent properties or buildings are directed away from the new residential structures foundations and/or floor slabs. All roof drainage should be directed into conduits that carry runoff water away from the residential structures to a suitable outfall. Roof downspouts should not be connected to foundation drains. A minimum ground slope of about 2 percent is generally recommended in unpaved areas around the proposed new residential structures.

Groundwater was not encountered at the site in any of the exploratory test pits (TH-#1 through TH-#11) at the time of excavation to depths of at least 7 feet beneath existing site grades. However, the northwesterly and/or westerly portion(s) of the site contains an existing seasonal drainage basin feature. Additionally, groundwater elevations in the area and/or across the subject property may fluctuate seasonally and may temporarily pond/perch near the ground surface during periods of prolonged rainfall.

As such, based on our current understand of the possible site grading required to bring the subject site and/or residential lots to finish design grade(s), we are of the opinion that an underslab drainage system is not required for the proposed single-family residential structures. However, a perimeter foundation drain is recommended for any perimeter footings and/or below grade retaining walls. A typical recommended perimeter footing/retaining wall drain detail is shown on Figure No. 4. Further, due to our understanding that various surface infiltration ditches and/or swales may be utilized for the project as well as the relatively low infiltration rates of the near surface clayey, sandy silt and/or silty sand subgrade soils anticipated within and/or near to the foundation bearing level of the proposed residential structures, we are generally of the opinion that storm water detention and/or disposal systems should not be utilized within the residential lots and/or around the proposed residential structures unless approved by the Geotechnical Engineer.

### **Design Infiltration Rates**

Based on the results of our field infiltration testing, we recommend using the following infiltration rate(s) to design any on-site near surface storm water infiltration systems for the project:

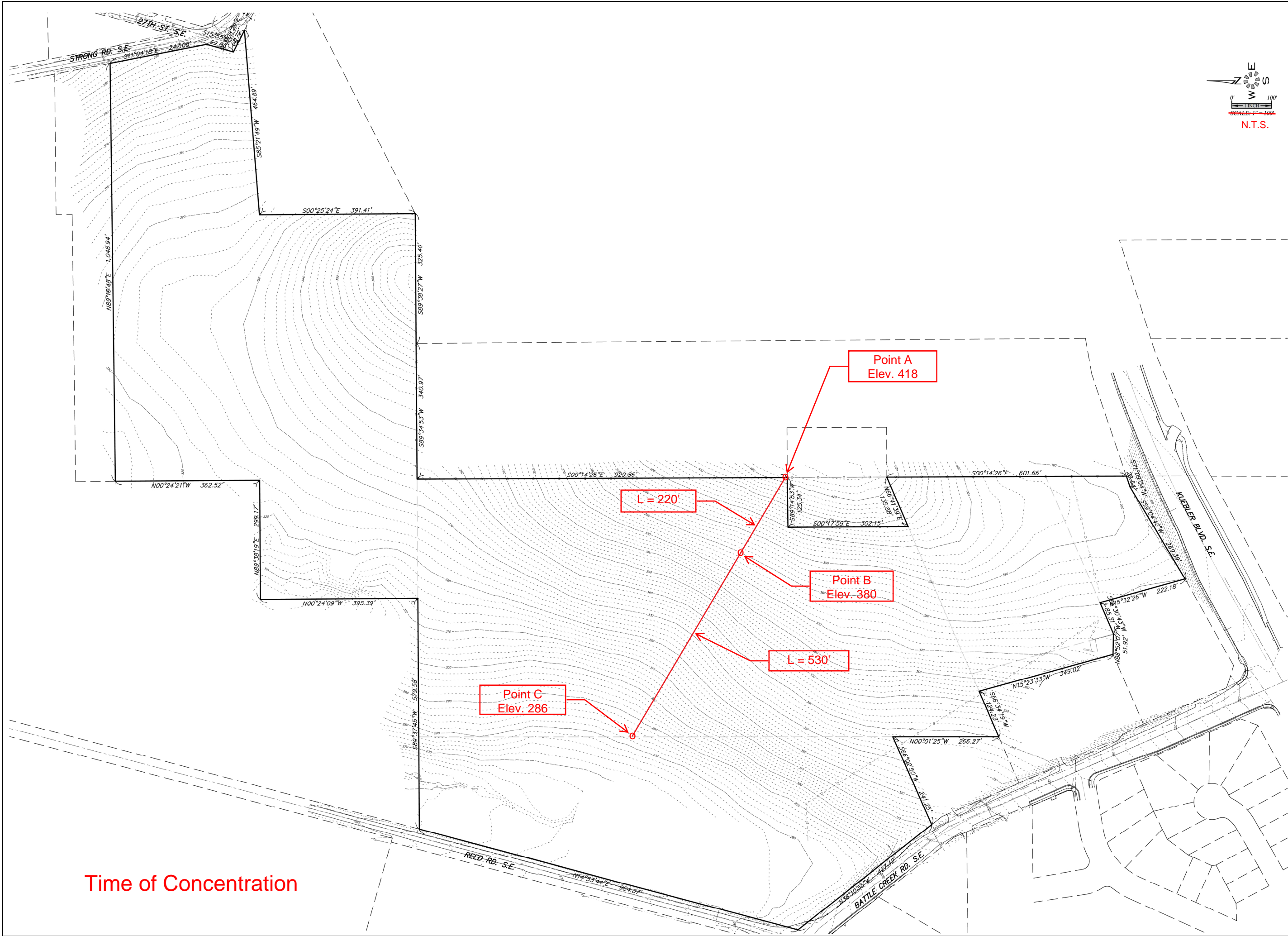
<b>Subgrade Soil Type</b>	<b>Recommended Infiltration Rate</b>
sandy, clayey SILT (ML)	0.1 to 0.3 inches per hour (in/hr)

Note: A safety factor of two (2) was used to calculate the above recommended design infiltration rate. Additionally, given the gradational variability of the on-site sandy, clayey sit subgrade soils beneath the site as well as the anticipation of some site grading for the project, it is generally recommended that field testing be performed during and/or following construction of any on-site storm water infiltration system(s) in order to confirm that the above recommended design infiltration rates are appropriate.

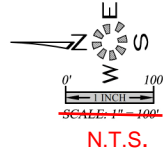


## Appendix C

J:\0200-4238\0234-4448\dwg\18\0234.dwg P1020, 10/2/2018 10:48:26 AM, P5founders



Time of Concentration

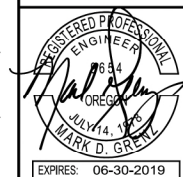


EXISTING  
CONDITIONS  
PLAN

COBURN GRAND VIEW ESTATES

NO CHANGES, MODIFICATIONS  
OR REPRODUCTIONS TO BE  
MADE WITHOUT THE WRITTEN  
AUTHORIZATION FROM THE  
DESIGN ENGINEER.  
DIMENSIONS & NOTES TAKE  
PRECEDENCE OVER  
GRAPHICAL REPRESENTATION.

Design: M.D.G.  
Drawn: P.H.S.  
Checked: J.J.G.  
Date: JUNE 2018  
Scale: AS SHOWN



JOB # 6234

# Worksheet 3: Time of Concentration (T<sub>c</sub>) or travel time (T<sub>t</sub>)

Project Coburn Grand View Estates	By C. O'Sullivan	Date 11/2021
Location Salem, Oregon	Checked	Date

Check one: ☐ Present ☐ Developed

Check one: ☐ T<sub>c</sub> ☐ T<sub>t</sub> through subarea

Notes: Space for as many as two segments per flow type can be used for each worksheet.  
Include a map, schematic, or description of flow segments.

## Sheet flow (Applicable to T<sub>c</sub> only)

Segment ID	A-B	
1. Surface description (Table 4D-4) .....	Pre-developed: Mixed	
2. Manning's roughness coefficient, n (Table 4D-4) .....	0.30	
3. Flow length, L (total L + 300 ft) ..... ft	220	
4. Two-year 24-hour rainfall, P <sub>2</sub> ..... in	2.2	
5. Land slope, s ..... ft/ft	0.173	
6. $T_t = \frac{0.007 (nL)^{0.8}}{P_2^{0.5} s^{0.4}}$ Compute T <sub>t</sub> ..... hr	0.272	+
		= 0.272

## Shallow concentrated flow

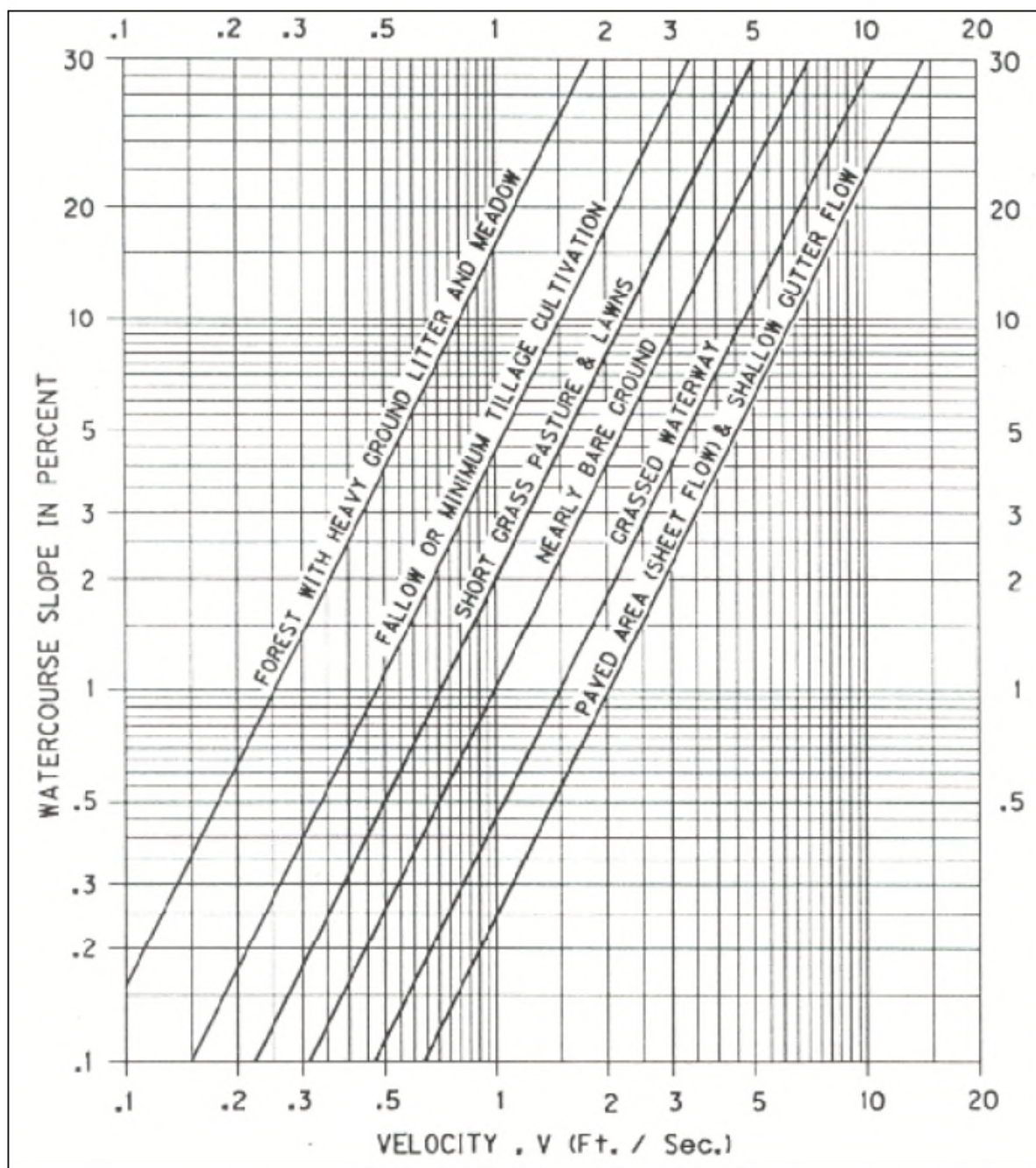
Segment ID	B-C	
7. Surface description (paved or unpaved) .....	Forest & Meadow	
8. Flow length, L .....ft	530	
9. Watercourse slope, s ..... ft/ft	0.177	
10. Average velocity, V (figure 3-1) ..... ft/s	1.1	
11. $T_t = \frac{L}{3600 V}$ Compute T <sub>t</sub> ..... hr	0.134	+
		= 0.134

## Channel flow

Segment ID		
12. Cross sectional flow area, a ..... ft <sup>2</sup>		
13. Wetted perimeter, p <sub>w</sub> ..... ft		
14. Hydraulic radius, $r = \frac{a}{p_w}$ Compute r ..... ft		
15. Channel slope, s ..... ft/ft		
16. Manning's roughness coefficient, n .....		
17. $V = \frac{1.49 r^{2/3} s^{1/2}}{n}$ Compute V .....ft/s		
18. Flow length, L ..... ft		
19. $T_t = \frac{L}{3600 V}$ Compute T <sub>t</sub> ..... hr		+
20. Watershed or subarea T <sub>c</sub> or T <sub>t</sub> (add T <sub>t</sub> in steps 6, 11, and 19) ..... Hr		= 0.406

0.41 Hrs = 24.3 Minutes

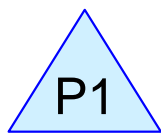




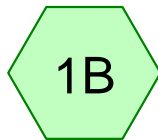




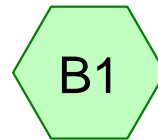
## Appendix D



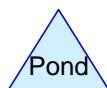
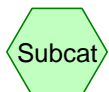
Control MH #1



Developed Conditions



Existing Conditions  
(Basin #1)



**Routing Diagram for 20211119 Detention**

Prepared by Multi/Tech Engineering, Printed 11/19/2021  
HydroCAD® 10.10-6a s/n 09412 © 2020 HydroCAD Software Solutions LLC

**20211119 Detention**

Prepared by Multi/Tech Engineering

Printed 11/19/2021

HydroCAD® 10.10-6a s/n 09412 © 2020 HydroCAD Software Solutions LLC

Page 2

**Rainfall Events Listing (selected events)**

Event#	Event Name	Storm Type	Curve	Mode	Duration (hours)	B/B	Depth (inches)	AMC
1	10-year	Type IA 24-hr		Default	24.00	1	3.20	2
2	25-year	Type IA 24-hr		Default	24.00	1	3.60	2
3	100-year	Type IA 24-hr		Default	24.00	1	4.40	2
4	Half of 2-year	Type IA 24-hr		Default	24.00	1	1.10	2

**20211119 Detention**

Prepared by Multi/Tech Engineering

HydroCAD® 10.10-6a s/n 09412 © 2020 HydroCAD Software Solutions LLC

Type IA 24-hr 10-year Rainfall=3.20"

Printed 11/19/2021

Page 3

**Summary for Subcatchment 1B: Developed Conditions**

Runoff = 6.65 cfs @ 8.05 hrs, Volume= 98,443 cf, Depth= 2.00"  
 Routed to Pond P1 : Control MH #1

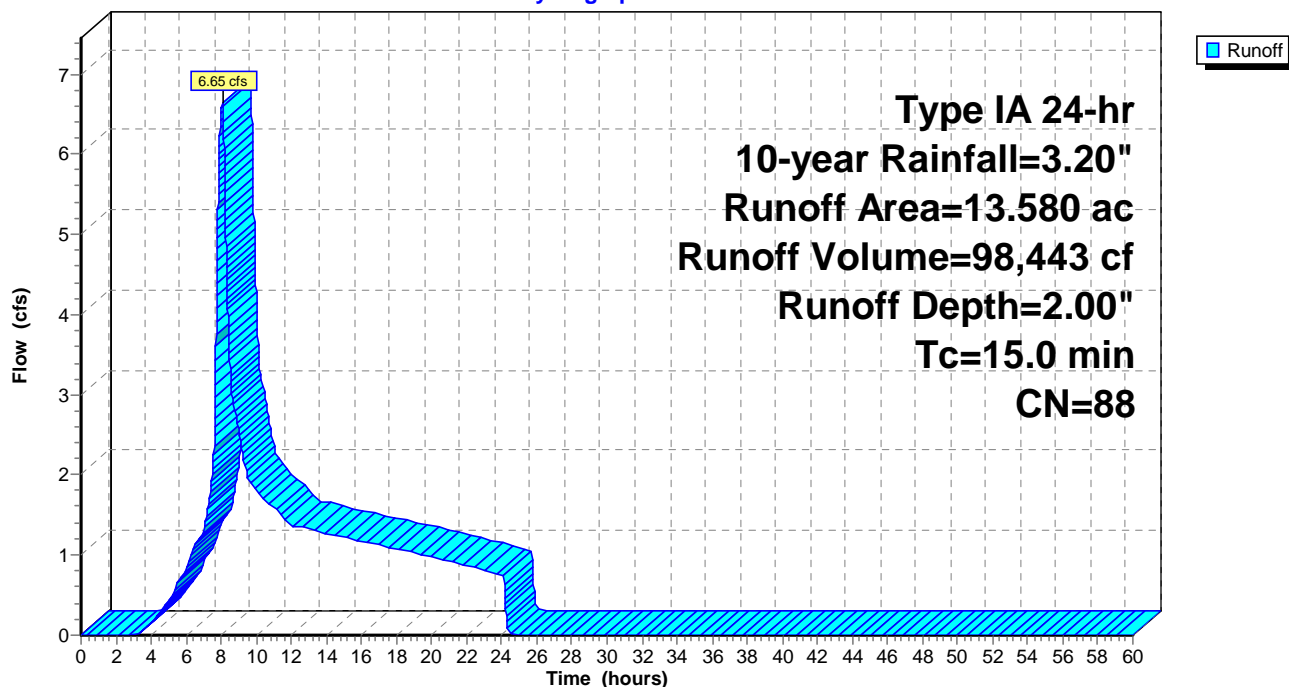
Runoff by SCS TR-20 method, UH=SCS, Weighted-CN, Time Span= 0.00-60.00 hrs, dt= 0.01 hrs  
 Type IA 24-hr 10-year Rainfall=3.20"

Area (ac)	CN	Description
5.430	74	>75% Grass cover, Good, HSG C
* 8.150	98	Impervious surface, HSG C
13.580	88	Weighted Average
5.430		39.99% Pervious Area
8.150		60.01% Impervious Area

Tc (min)	Length (feet)	Slope (ft/ft)	Velocity (ft/sec)	Capacity (cfs)	Description
15.0					Direct Entry, Direct Entry

**Subcatchment 1B: Developed Conditions**

Hydrograph



**20211119 Detention**

Prepared by Multi/Tech Engineering

HydroCAD® 10.10-6a s/n 09412 © 2020 HydroCAD Software Solutions LLC

Type IA 24-hr 10-year Rainfall=3.20"

Printed 11/19/2021

Page 4

**Summary for Subcatchment B1: Existing Conditions (Basin #1)**

Runoff = 1.85 cfs @ 8.23 hrs, Volume= 45,828 cf, Depth= 0.93"

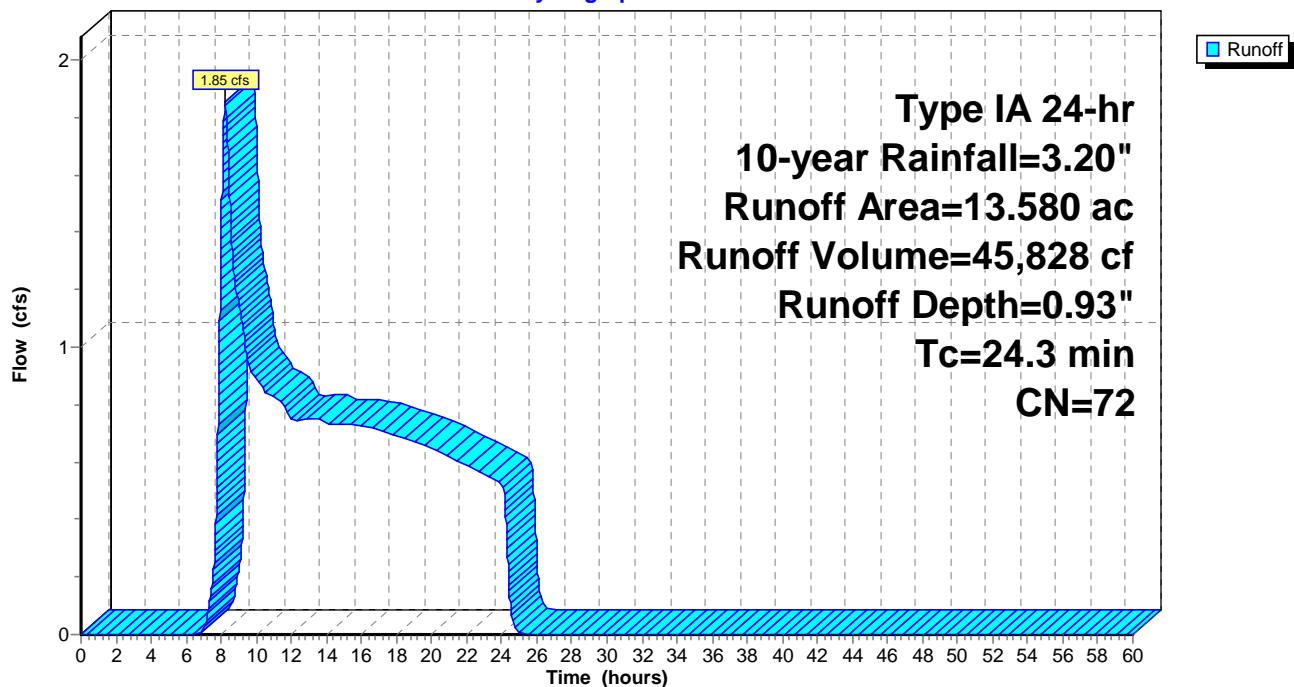
Runoff by SCS TR-20 method, UH=SCS, Weighted-CN, Time Span= 0.00-60.00 hrs, dt= 0.01 hrs  
Type IA 24-hr 10-year Rainfall=3.20"

Area (ac)	CN	Description
* 13.580	72	City of Salem Pre-developed, HSG C
13.580		100.00% Pervious Area

Tc (min)	Length (feet)	Slope (ft/ft)	Velocity (ft/sec)	Capacity (cfs)	Description
24.3					Direct Entry, TR-55 Worksheet

**Subcatchment B1: Existing Conditions (Basin #1)**

Hydrograph



**20211119 Detention**

Prepared by Multi/Tech Engineering

HydroCAD® 10.10-6a s/n 09412 © 2020 HydroCAD Software Solutions LLC

Type IA 24-hr 10-year Rainfall=3.20"

Printed 11/19/2021

Page 5

**Summary for Pond P1: Control MH #1**

Inflow Area = 591,545 sf, 60.01% Impervious, Inflow Depth = 2.00" for 10-year event  
 Inflow = 6.65 cfs @ 8.05 hrs, Volume= 98,443 cf  
 Outflow = 1.81 cfs @ 10.07 hrs, Volume= 87,452 cf, Atten= 73%, Lag= 121.1 min  
 Primary = 1.81 cfs @ 10.07 hrs, Volume= 87,452 cf

Routing by Stor-Ind method, Time Span= 0.00-60.00 hrs, dt= 0.01 hrs  
 Peak Elev= 295.43' @ 10.07 hrs Surf.Area= 9,350 sf Storage= 28,334 cf  
 Flood Elev= 299.00' Surf.Area= 9,350 sf Storage= 61,719 cf

Plug-Flow detention time= 333.2 min calculated for 87,438 cf (89% of inflow)  
 Center-of-Mass det. time= 262.0 min ( 1,033.6 - 771.6 )

Volume	Invert	Avail.Storage	Storage Description	
#1	289.99'	71,069 cf	<b>Custom Stage Data (Prismatic)</b> Listed below (Recalc)	
Elevation (feet)	Surf.Area (sq-ft)	Voids (%)	Inc.Store (cubic-feet)	Cum.Store (cubic-feet)
289.99	9,350	0.0	0	0
290.00	9,350	40.0	37	37
291.25	9,350	40.0	4,675	4,712
291.26	9,350	5.0	5	4,717
292.99	9,350	5.0	809	5,526
293.00	9,350	100.0	93	5,619
294.00	9,350	100.0	9,350	14,969
295.00	9,350	100.0	9,350	24,319
296.00	9,350	100.0	9,350	33,669
297.00	9,350	100.0	9,350	43,019
298.00	9,350	100.0	9,350	52,369
299.00	9,350	100.0	9,350	61,719
300.00	9,350	100.0	9,350	71,069

Device	Routing	Invert	Outlet Devices	
#1	Primary	290.00'	<b>15.0" Round 15" Culvert</b> L= 100.0' RCP, rounded edge headwall, Ke= 0.100 Inlet / Outlet Invert= 290.00' / 289.70' S= 0.0030 '/' Cc= 0.900 n= 0.013, Flow Area= 1.23 sf	
#2	Device 1	290.00'	<b>0.9" Vert. Orifice #1</b>	C= 0.600 Limited to weir flow at low heads
#3	Device 1	294.00'	<b>8.0" Vert. Orifice #2</b>	C= 0.600 Limited to weir flow at low heads
#4	Device 1	295.50'	<b>8.5" Vert. Orifice #3</b>	C= 0.600 Limited to weir flow at low heads
#5	Device 1	299.00'	<b>15.0" Horiz. Overflow</b>	C= 0.600 Limited to weir flow at low heads

**Primary OutFlow** Max=1.81 cfs @ 10.07 hrs HW=295.43' (Free Discharge)

- 1=15" Culvert (Passes 1.81 cfs of 11.25 cfs potential flow)
- 2=Orifice #1 (Orifice Controls 0.05 cfs @ 11.18 fps)
- 3=Orifice #2 (Orifice Controls 1.76 cfs @ 5.04 fps)
- 4=Orifice #3 ( Controls 0.00 cfs)
- 5=Overflow ( Controls 0.00 cfs)

## 20211119 Detention

Prepared by Multi/Tech Engineering

HydroCAD® 10.10-6a s/n 09412 © 2020 HydroCAD Software Solutions LLC

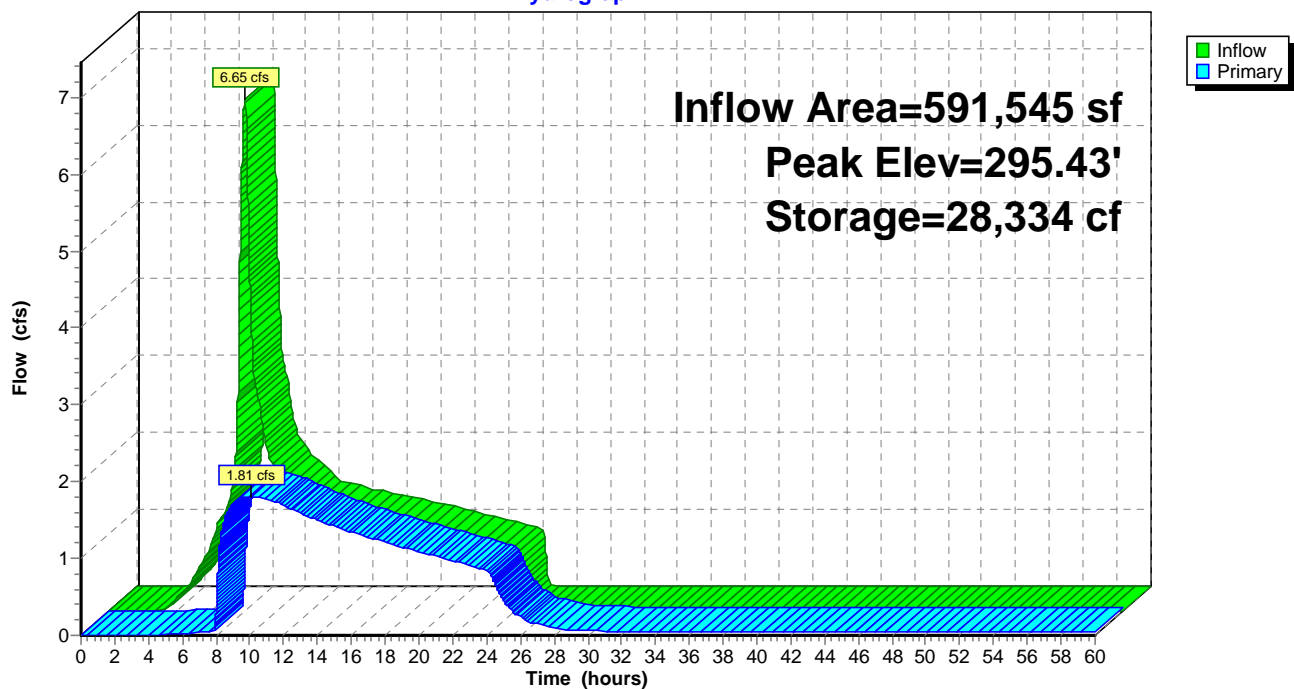
Type IA 24-hr 10-year Rainfall=3.20"

Printed 11/19/2021

Page 6

### Pond P1: Control MH #1

Hydrograph





**20211119 Detention**

Prepared by Multi/Tech Engineering

HydroCAD® 10.10-6a s/n 09412 © 2020 HydroCAD Software Solutions LLC

Type IA 24-hr 25-year Rainfall=3.60"

Printed 11/19/2021

Page 7

**Summary for Subcatchment 1B: Developed Conditions**

Runoff = 7.96 cfs @ 8.05 hrs, Volume= 116,339 cf, Depth= 2.36"  
 Routed to Pond P1 : Control MH #1

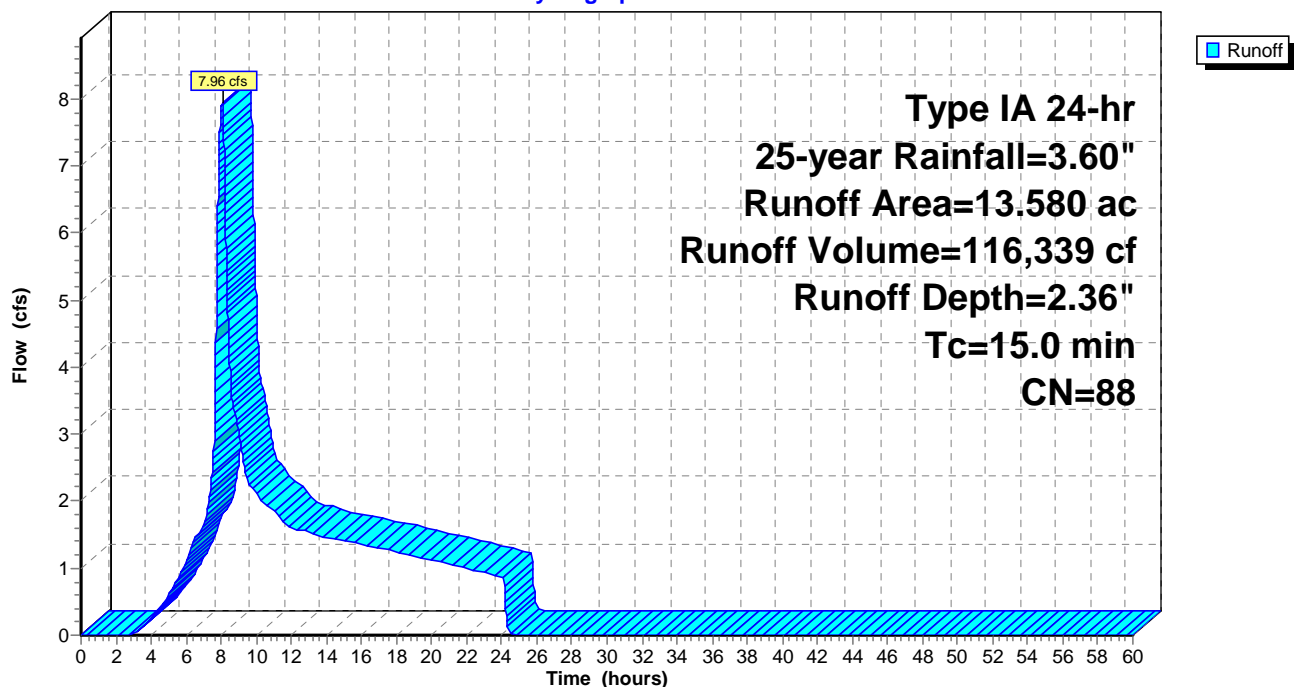
Runoff by SCS TR-20 method, UH=SCS, Weighted-CN, Time Span= 0.00-60.00 hrs, dt= 0.01 hrs  
 Type IA 24-hr 25-year Rainfall=3.60"

Area (ac)	CN	Description
5.430	74	>75% Grass cover, Good, HSG C
* 8.150	98	Impervious surface, HSG C
13.580	88	Weighted Average
5.430		39.99% Pervious Area
8.150		60.01% Impervious Area

Tc (min)	Length (feet)	Slope (ft/ft)	Velocity (ft/sec)	Capacity (cfs)	Description
15.0					Direct Entry, Direct Entry

**Subcatchment 1B: Developed Conditions**

Hydrograph



**20211119 Detention**

Prepared by Multi/Tech Engineering

HydroCAD® 10.10-6a s/n 09412 © 2020 HydroCAD Software Solutions LLC

Type IA 24-hr 25-year Rainfall=3.60"

Printed 11/19/2021

Page 8

**Summary for Subcatchment B1: Existing Conditions (Basin #1)**

Runoff = 2.64 cfs @ 8.21 hrs, Volume= 58,505 cf, Depth= 1.19"

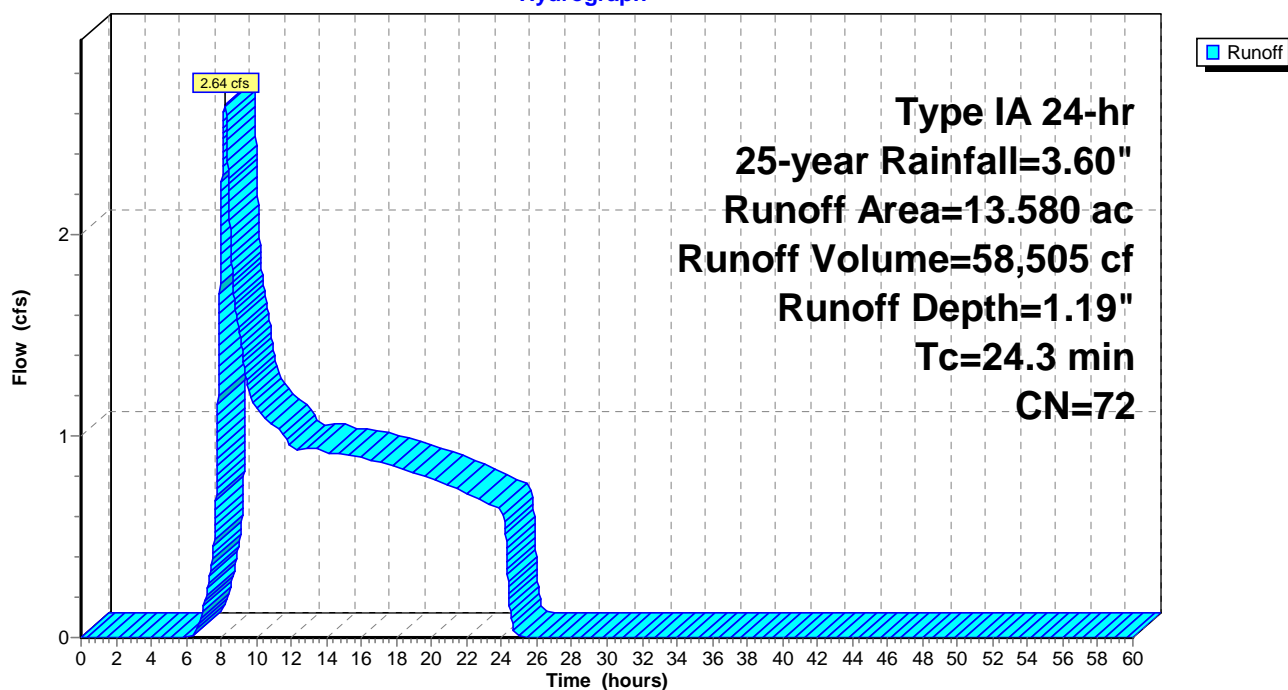
Runoff by SCS TR-20 method, UH=SCS, Weighted-CN, Time Span= 0.00-60.00 hrs, dt= 0.01 hrs  
Type IA 24-hr 25-year Rainfall=3.60"

Area (ac)	CN	Description
* 13.580	72	City of Salem Pre-developed, HSG C
13.580		100.00% Pervious Area

Tc (min)	Length (feet)	Slope (ft/ft)	Velocity (ft/sec)	Capacity (cfs)	Description
24.3					Direct Entry, TR-55 Worksheet

**Subcatchment B1: Existing Conditions (Basin #1)**

Hydrograph



**20211119 Detention**

Prepared by Multi/Tech Engineering

HydroCAD® 10.10-6a s/n 09412 © 2020 HydroCAD Software Solutions LLC

Type IA 24-hr 25-year Rainfall=3.60"

Printed 11/19/2021

Page 9

**Summary for Pond P1: Control MH #1**

Inflow Area = 591,545 sf, 60.01% Impervious, Inflow Depth = 2.36" for 25-year event  
 Inflow = 7.96 cfs @ 8.05 hrs, Volume= 116,339 cf  
 Outflow = 2.55 cfs @ 9.30 hrs, Volume= 105,313 cf, Atten= 68%, Lag= 75.0 min  
 Primary = 2.55 cfs @ 9.30 hrs, Volume= 105,313 cf

Routing by Stor-Ind method, Time Span= 0.00-60.00 hrs, dt= 0.01 hrs  
 Peak Elev= 295.86' @ 9.30 hrs Surf.Area= 9,350 sf Storage= 32,393 cf  
 Flood Elev= 299.00' Surf.Area= 9,350 sf Storage= 61,719 cf

Plug-Flow detention time= 303.3 min calculated for 105,296 cf (91% of inflow)  
 Center-of-Mass det. time= 241.6 min ( 1,003.9 - 762.2 )

Volume	Invert	Avail.Storage	Storage Description
#1	289.99'	71,069 cf	<b>Custom Stage Data (Prismatic)</b> Listed below (Recalc)

Elevation (feet)	Surf.Area (sq-ft)	Voids (%)	Inc.Store (cubic-feet)	Cum.Store (cubic-feet)
289.99	9,350	0.0	0	0
290.00	9,350	40.0	37	37
291.25	9,350	40.0	4,675	4,712
291.26	9,350	5.0	5	4,717
292.99	9,350	5.0	809	5,526
293.00	9,350	100.0	93	5,619
294.00	9,350	100.0	9,350	14,969
295.00	9,350	100.0	9,350	24,319
296.00	9,350	100.0	9,350	33,669
297.00	9,350	100.0	9,350	43,019
298.00	9,350	100.0	9,350	52,369
299.00	9,350	100.0	9,350	61,719
300.00	9,350	100.0	9,350	71,069

Device	Routing	Invert	Outlet Devices
#1	Primary	290.00'	<b>15.0" Round 15" Culvert</b> L= 100.0' RCP, rounded edge headwall, Ke= 0.100 Inlet / Outlet Invert= 290.00' / 289.70' S= 0.0030 '/' Cc= 0.900 n= 0.013, Flow Area= 1.23 sf
#2	Device 1	290.00'	<b>0.9" Vert. Orifice #1</b> C= 0.600 Limited to weir flow at low heads
#3	Device 1	294.00'	<b>8.0" Vert. Orifice #2</b> C= 0.600 Limited to weir flow at low heads
#4	Device 1	295.50'	<b>8.5" Vert. Orifice #3</b> C= 0.600 Limited to weir flow at low heads
#5	Device 1	299.00'	<b>15.0" Horiz. Overflow</b> C= 0.600 Limited to weir flow at low heads

**Primary OutFlow** Max=2.55 cfs @ 9.30 hrs HW=295.86' (Free Discharge)

- 1=15" Culvert (Passes 2.55 cfs of 11.78 cfs potential flow)
- 2=Orifice #1 (Orifice Controls 0.05 cfs @ 11.62 fps)
- 3=Orifice #2 (Orifice Controls 2.08 cfs @ 5.96 fps)
- 4=Orifice #3 (Orifice Controls 0.42 cfs @ 2.05 fps)
- 5=Overflow ( Controls 0.00 cfs)

## 20211119 Detention

Prepared by Multi/Tech Engineering

HydroCAD® 10.10-6a s/n 09412 © 2020 HydroCAD Software Solutions LLC

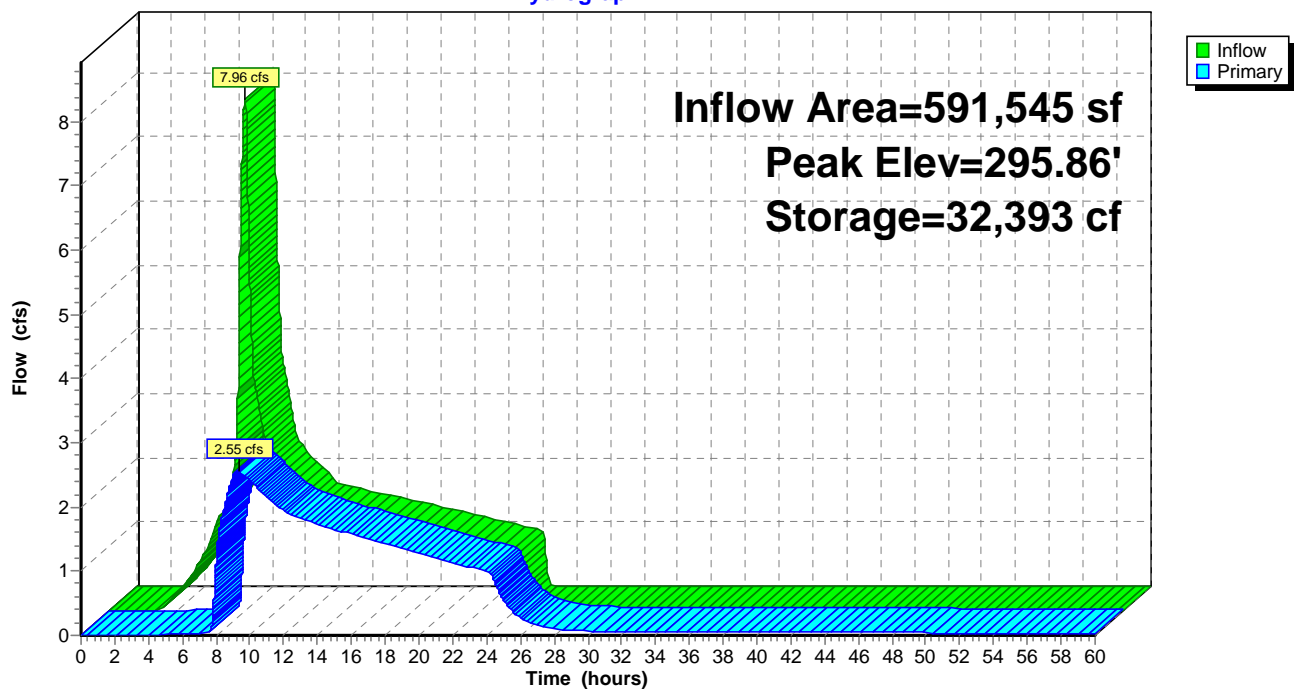
Type IA 24-hr 25-year Rainfall=3.60"

Printed 11/19/2021

Page 10

### Pond P1: Control MH #1

Hydrograph



**20211119 Detention**

Prepared by Multi/Tech Engineering

HydroCAD® 10.10-6a s/n 09412 © 2020 HydroCAD Software Solutions LLC

Type IA 24-hr 100-year Rainfall=4.40"

Printed 11/19/2021

Page 11

**Summary for Subcatchment 1B: Developed Conditions**

Runoff = 10.62 cfs @ 8.05 hrs, Volume= 152,929 cf, Depth= 3.10"  
Routed to Pond P1 : Control MH #1

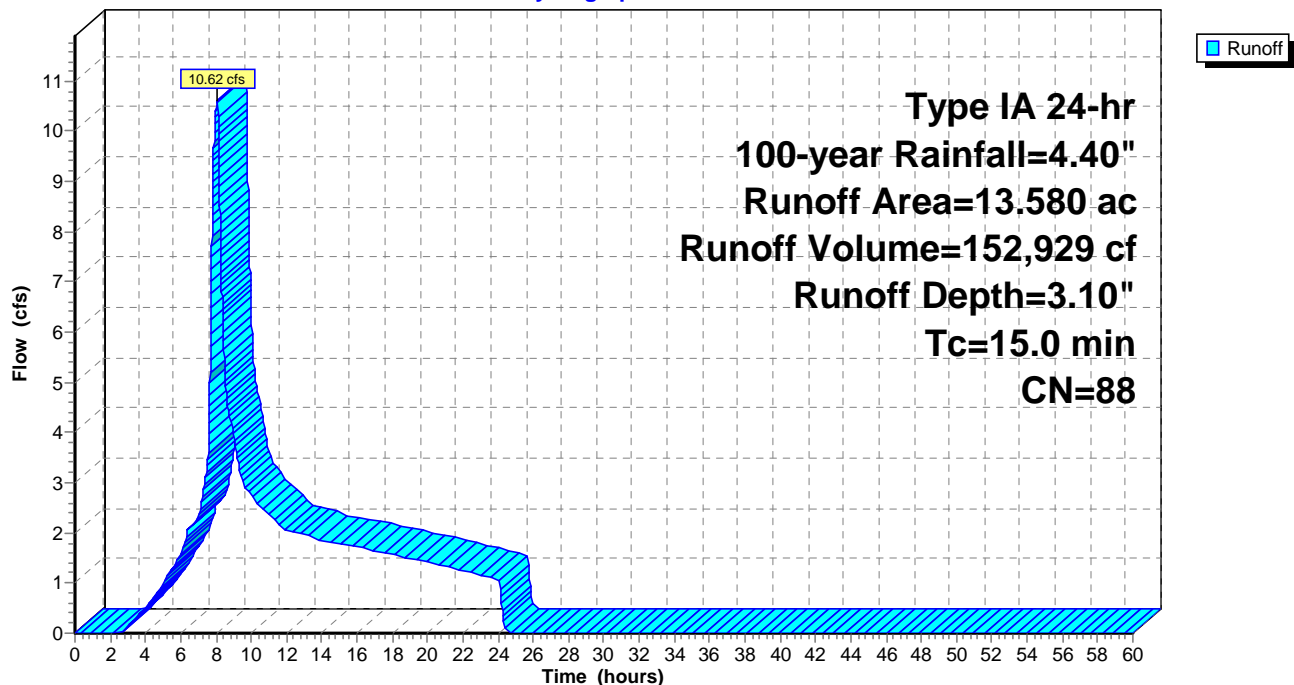
Runoff by SCS TR-20 method, UH=SCS, Weighted-CN, Time Span= 0.00-60.00 hrs, dt= 0.01 hrs  
Type IA 24-hr 100-year Rainfall=4.40"

Area (ac)	CN	Description
5.430	74	>75% Grass cover, Good, HSG C
* 8.150	98	Impervious surface, HSG C
13.580	88	Weighted Average
5.430		39.99% Pervious Area
8.150		60.01% Impervious Area

Tc (min)	Length (feet)	Slope (ft/ft)	Velocity (ft/sec)	Capacity (cfs)	Description
15.0					Direct Entry, Direct Entry

**Subcatchment 1B: Developed Conditions**

Hydrograph



**20211119 Detention**

Prepared by Multi/Tech Engineering

HydroCAD® 10.10-6a s/n 09412 © 2020 HydroCAD Software Solutions LLC

Type IA 24-hr 100-year Rainfall=4.40"

Printed 11/19/2021

Page 12

**Summary for Subcatchment B1: Existing Conditions (Basin #1)**

Runoff = 4.43 cfs @ 8.18 hrs, Volume= 86,110 cf, Depth= 1.75"

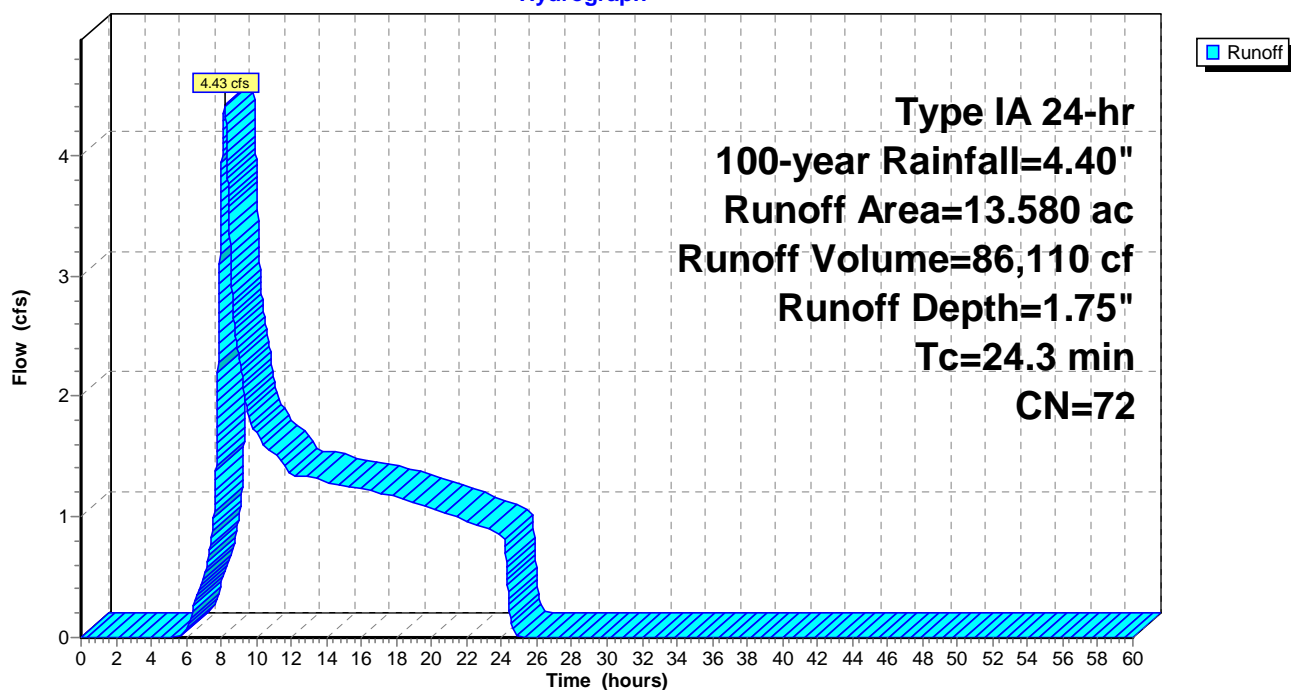
Runoff by SCS TR-20 method, UH=SCS, Weighted-CN, Time Span= 0.00-60.00 hrs, dt= 0.01 hrs  
Type IA 24-hr 100-year Rainfall=4.40"

Area (ac)	CN	Description
* 13.580	72	City of Salem Pre-developed, HSG C
13.580		100.00% Pervious Area

Tc (min)	Length (feet)	Slope (ft/ft)	Velocity (ft/sec)	Capacity (cfs)	Description
24.3					Direct Entry, TR-55 Worksheet

**Subcatchment B1: Existing Conditions (Basin #1)**

Hydrograph



**20211119 Detention**

Type IA 24-hr 100-year Rainfall=4.40"

Prepared by Multi/Tech Engineering

Printed 11/19/2021

HydroCAD® 10.10-6a s/n 09412 © 2020 HydroCAD Software Solutions LLC

Page 13

**Summary for Pond P1: Control MH #1**

Inflow Area = 591,545 sf, 60.01% Impervious, Inflow Depth = 3.10" for 100-year event  
 Inflow = 10.62 cfs @ 8.05 hrs, Volume= 152,929 cf  
 Outflow = 4.20 cfs @ 8.87 hrs, Volume= 141,828 cf, Atten= 60%, Lag= 49.4 min  
 Primary = 4.20 cfs @ 8.87 hrs, Volume= 141,828 cf

Routing by Stor-Ind method, Time Span= 0.00-60.00 hrs, dt= 0.01 hrs  
 Peak Elev= 296.58' @ 8.87 hrs Surf.Area= 9,350 sf Storage= 39,130 cf  
 Flood Elev= 299.00' Surf.Area= 9,350 sf Storage= 61,719 cf

Plug-Flow detention time= 258.2 min calculated for 141,828 cf (93% of inflow)  
 Center-of-Mass det. time= 209.3 min ( 956.8 - 747.5 )

Volume	Invert	Avail.Storage	Storage Description
#1	289.99'	71,069 cf	<b>Custom Stage Data (Prismatic)</b> Listed below (Recalc)

Elevation (feet)	Surf.Area (sq-ft)	Voids (%)	Inc.Store (cubic-feet)	Cum.Store (cubic-feet)
289.99	9,350	0.0	0	0
290.00	9,350	40.0	37	37
291.25	9,350	40.0	4,675	4,712
291.26	9,350	5.0	5	4,717
292.99	9,350	5.0	809	5,526
293.00	9,350	100.0	93	5,619
294.00	9,350	100.0	9,350	14,969
295.00	9,350	100.0	9,350	24,319
296.00	9,350	100.0	9,350	33,669
297.00	9,350	100.0	9,350	43,019
298.00	9,350	100.0	9,350	52,369
299.00	9,350	100.0	9,350	61,719
300.00	9,350	100.0	9,350	71,069

Device	Routing	Invert	Outlet Devices
#1	Primary	290.00'	<b>15.0" Round 15" Culvert</b> L= 100.0' RCP, rounded edge headwall, Ke= 0.100 Inlet / Outlet Invert= 290.00' / 289.70' S= 0.0030 '/' Cc= 0.900 n= 0.013, Flow Area= 1.23 sf
#2	Device 1	290.00'	<b>0.9" Vert. Orifice #1</b> C= 0.600 Limited to weir flow at low heads
#3	Device 1	294.00'	<b>8.0" Vert. Orifice #2</b> C= 0.600 Limited to weir flow at low heads
#4	Device 1	295.50'	<b>8.5" Vert. Orifice #3</b> C= 0.600 Limited to weir flow at low heads
#5	Device 1	299.00'	<b>15.0" Horiz. Overflow</b> C= 0.600 Limited to weir flow at low heads

**Primary OutFlow** Max=4.20 cfs @ 8.87 hrs HW=296.58' (Free Discharge)

- 1=15" Culvert (Passes 4.20 cfs of 12.62 cfs potential flow)
- 2=Orifice #1 (Orifice Controls 0.05 cfs @ 12.32 fps)
- 3=Orifice #2 (Orifice Controls 2.52 cfs @ 7.22 fps)
- 4=Orifice #3 (Orifice Controls 1.62 cfs @ 4.11 fps)
- 5=Overflow ( Controls 0.00 cfs)

## 20211119 Detention

Prepared by Multi/Tech Engineering

HydroCAD® 10.10-6a s/n 09412 © 2020 HydroCAD Software Solutions LLC

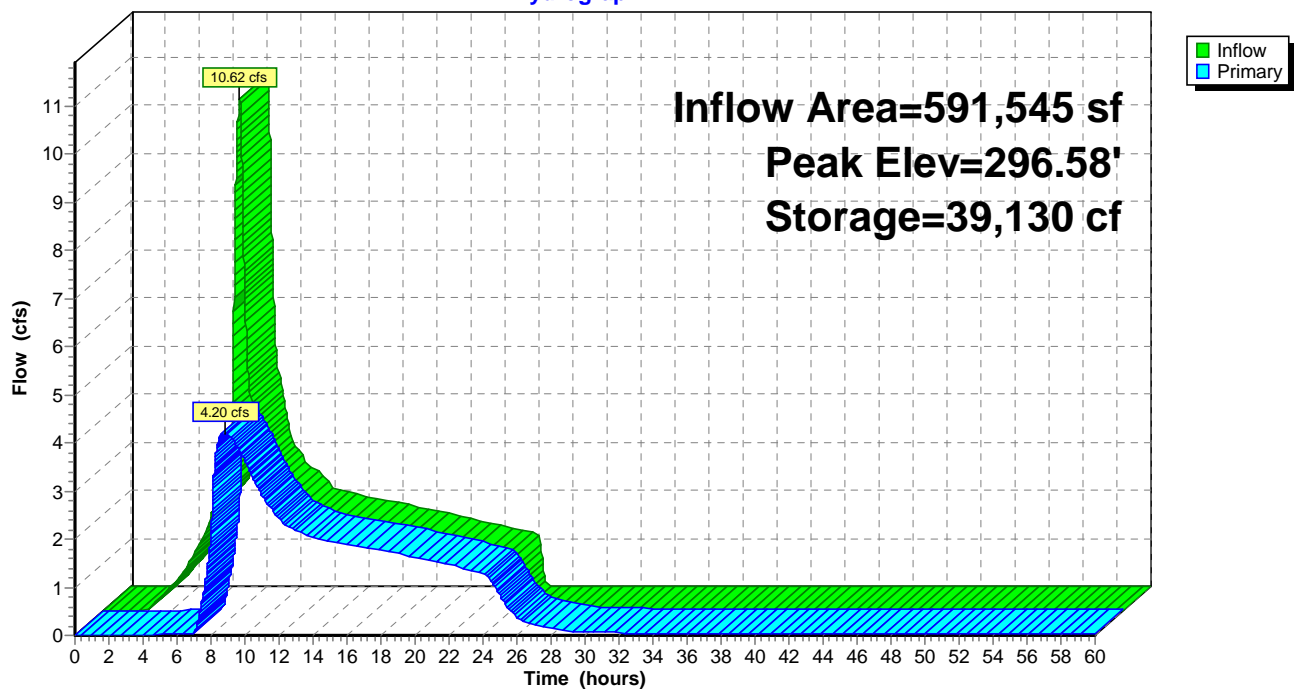
Type IA 24-hr 100-year Rainfall=4.40"

Printed 11/19/2021

Page 14

### Pond P1: Control MH #1

Hydrograph





**20211119 Detention**

Prepared by Multi/Tech Engineering

HydroCAD® 10.10-6a s/n 09412 © 2020 HydroCAD Software Solutions LLC

Type IA 24-hr Half of 2-year Rainfall=1.10"

Printed 11/19/2021

Page 15

**Summary for Subcatchment 1B: Developed Conditions**

Runoff = 0.68 cfs @ 8.11 hrs, Volume= 15,399 cf, Depth= 0.31"  
 Routed to Pond P1 : Control MH #1

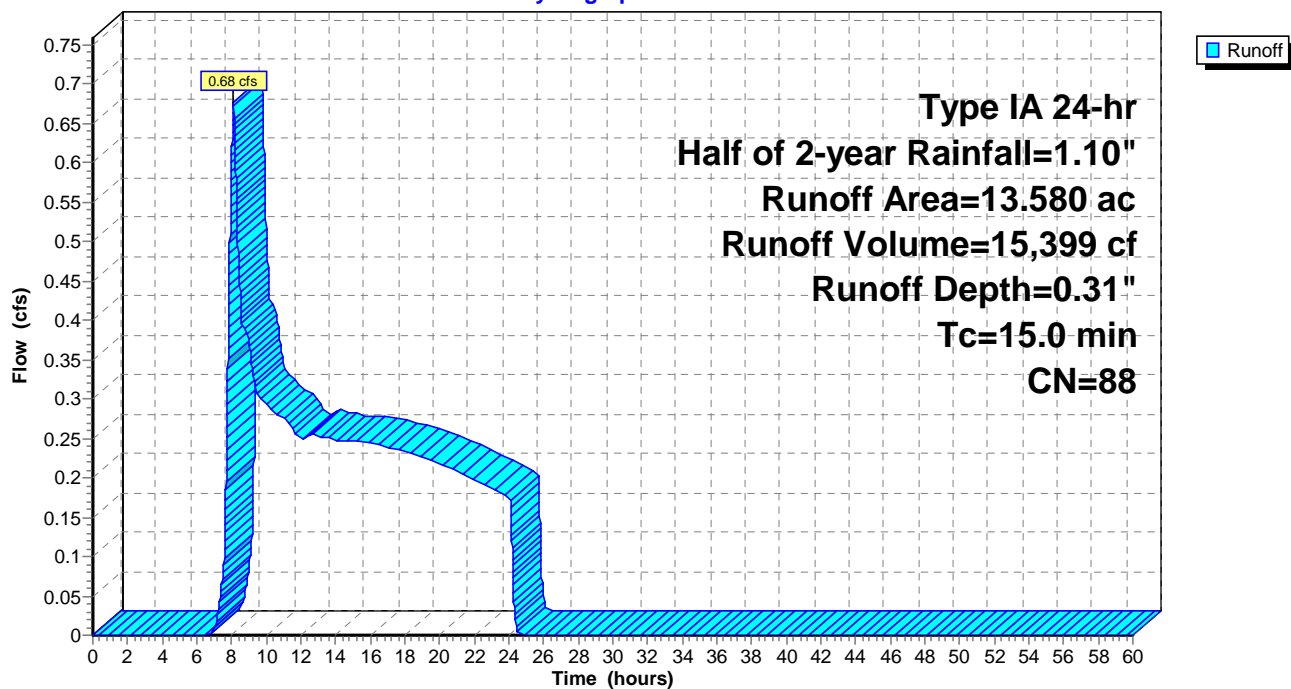
Runoff by SCS TR-20 method, UH=SCS, Weighted-CN, Time Span= 0.00-60.00 hrs, dt= 0.01 hrs  
 Type IA 24-hr Half of 2-year Rainfall=1.10"

Area (ac)	CN	Description
5.430	74	>75% Grass cover, Good, HSG C
* 8.150	98	Impervious surface, HSG C
13.580	88	Weighted Average
5.430		39.99% Pervious Area
8.150		60.01% Impervious Area

Tc (min)	Length (feet)	Slope (ft/ft)	Velocity (ft/sec)	Capacity (cfs)	Description
15.0					Direct Entry, Direct Entry

**Subcatchment 1B: Developed Conditions**

Hydrograph



**20211119 Detention**

Prepared by Multi/Tech Engineering

HydroCAD® 10.10-6a s/n 09412 © 2020 HydroCAD Software Solutions LLC

Type IA 24-hr Half of 2-year Rainfall=1.10"

Printed 11/19/2021

Page 16

**Summary for Subcatchment B1: Existing Conditions (Basin #1)**

Runoff = 0.04 cfs @ 22.87 hrs, Volume= 1,215 cf, Depth= 0.02"

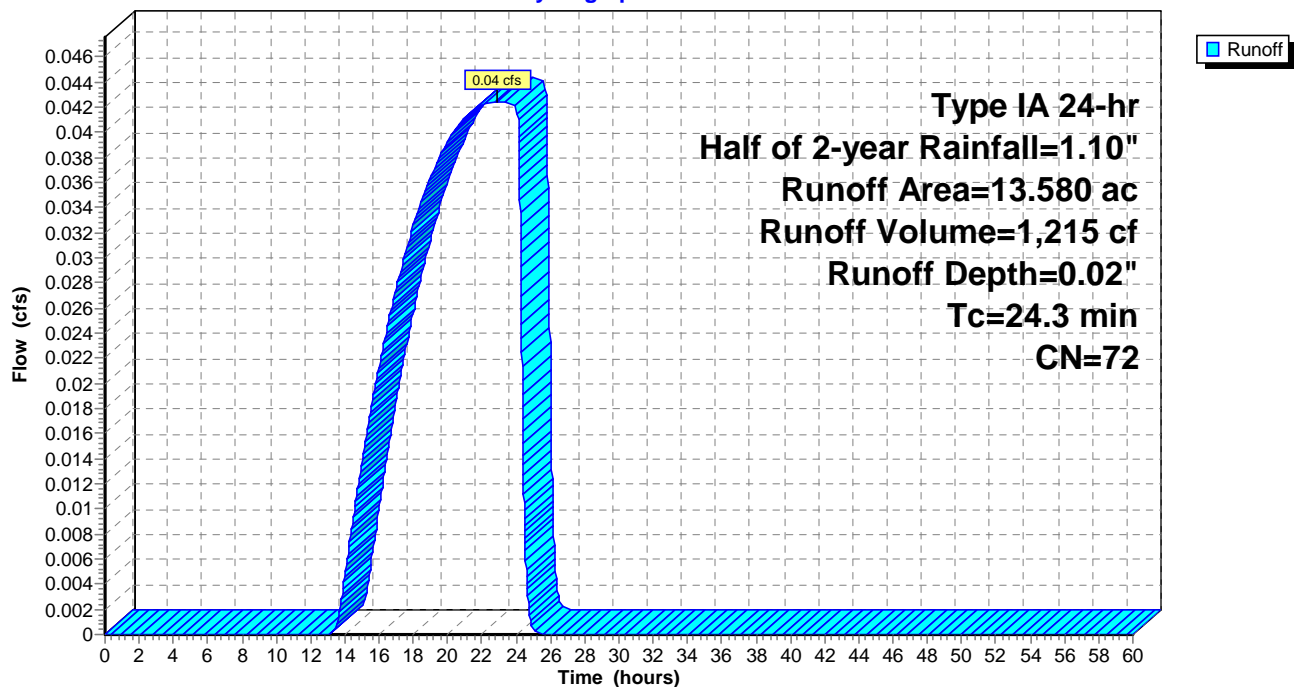
Runoff by SCS TR-20 method, UH=SCS, Weighted-CN, Time Span= 0.00-60.00 hrs, dt= 0.01 hrs  
Type IA 24-hr Half of 2-year Rainfall=1.10"

Area (ac)	CN	Description
* 13.580	72	City of Salem Pre-developed, HSG C
13.580		100.00% Pervious Area

Tc (min)	Length (feet)	Slope (ft/ft)	Velocity (ft/sec)	Capacity (cfs)	Description
24.3					Direct Entry, TR-55 Worksheet

**Subcatchment B1: Existing Conditions (Basin #1)**

Hydrograph



**20211119 Detention**

Type IA 24-hr Half of 2-year Rainfall=1.10"

Prepared by Multi/Tech Engineering

Printed 11/19/2021

HydroCAD® 10.10-6a s/n 09412 © 2020 HydroCAD Software Solutions LLC

Page 17

**Summary for Pond P1: Control MH #1**

Inflow Area = 591,545 sf, 60.01% Impervious, Inflow Depth = 0.31" for Half of 2-year event  
 Inflow = 0.68 cfs @ 8.11 hrs, Volume= 15,399 cf  
 Outflow = 0.04 cfs @ 24.29 hrs, Volume= 7,139 cf, Atten= 94%, Lag= 970.7 min  
 Primary = 0.04 cfs @ 24.29 hrs, Volume= 7,139 cf

Routing by Stor-Ind method, Time Span= 0.00-60.00 hrs, dt= 0.01 hrs  
 Peak Elev= 293.83' @ 24.29 hrs Surf.Area= 9,350 sf Storage= 13,371 cf  
 Flood Elev= 299.00' Surf.Area= 9,350 sf Storage= 61,719 cf

Plug-Flow detention time= 1,478.2 min calculated for 7,139 cf (46% of inflow)  
 Center-of-Mass det. time= 1,206.6 min ( 2,096.1 - 889.6 )

Volume	Invert	Avail.Storage	Storage Description	
#1	289.99'	71,069 cf	<b>Custom Stage Data (Prismatic)</b> Listed below (Recalc)	
Elevation (feet)	Surf.Area (sq-ft)	Voids (%)	Inc.Store (cubic-feet)	Cum.Store (cubic-feet)
289.99	9,350	0.0	0	0
290.00	9,350	40.0	37	37
291.25	9,350	40.0	4,675	4,712
291.26	9,350	5.0	5	4,717
292.99	9,350	5.0	809	5,526
293.00	9,350	100.0	93	5,619
294.00	9,350	100.0	9,350	14,969
295.00	9,350	100.0	9,350	24,319
296.00	9,350	100.0	9,350	33,669
297.00	9,350	100.0	9,350	43,019
298.00	9,350	100.0	9,350	52,369
299.00	9,350	100.0	9,350	61,719
300.00	9,350	100.0	9,350	71,069

Device	Routing	Invert	Outlet Devices	
#1	Primary	290.00'	<b>15.0" Round 15" Culvert</b> L= 100.0' RCP, rounded edge headwall, Ke= 0.100 Inlet / Outlet Invert= 290.00' / 289.70' S= 0.0030 '/' Cc= 0.900 n= 0.013, Flow Area= 1.23 sf	
#2	Device 1	290.00'	<b>0.9" Vert. Orifice #1</b>	C= 0.600 Limited to weir flow at low heads
#3	Device 1	294.00'	<b>8.0" Vert. Orifice #2</b>	C= 0.600 Limited to weir flow at low heads
#4	Device 1	295.50'	<b>8.5" Vert. Orifice #3</b>	C= 0.600 Limited to weir flow at low heads
#5	Device 1	299.00'	<b>15.0" Horiz. Overflow</b>	C= 0.600 Limited to weir flow at low heads

**Primary OutFlow** Max=0.04 cfs @ 24.29 hrs HW=293.83' (Free Discharge)

- 1=15" Culvert (Passes 0.04 cfs of 9.02 cfs potential flow)  
 2=Orifice #1 (Orifice Controls 0.04 cfs @ 9.38 fps)  
 3=Orifice #2 ( Controls 0.00 cfs)  
 4=Orifice #3 ( Controls 0.00 cfs)  
 5=Overflow ( Controls 0.00 cfs)

## 20211119 Detention

Prepared by Multi/Tech Engineering

HydroCAD® 10.10-6a s/n 09412 © 2020 HydroCAD Software Solutions LLC

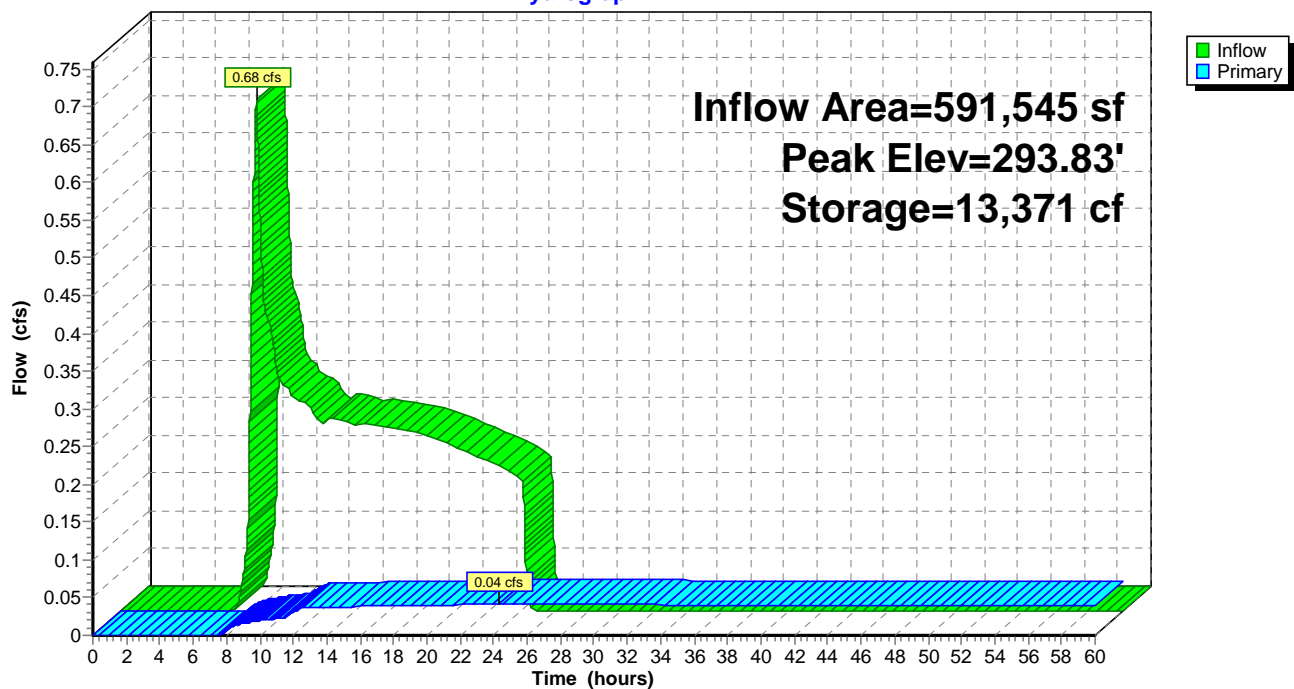
Type IA 24-hr Half of 2-year Rainfall=1.10"

Printed 11/19/2021

Page 18

### Pond P1: Control MH #1

Hydrograph



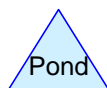
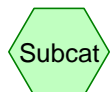


## Appendix E



Water Quality Media

Developed Conditions  
(Basin #1)



**Routing Diagram for 20210420 WQ**

Prepared by Multitech Engineering Services, Inc., Printed 4/21/2021  
HydroCAD® 10.10-4a s/n 09412 © 2020 HydroCAD Software Solutions LLC



**20210420 WQ**

Prepared by Multitech Engineering Services, Inc.

HydroCAD® 10.10-4a s/n 09412 © 2020 HydroCAD Software Solutions LLC

Type IA 24-hr WQ Rainfall=1.38"

Printed 4/21/2021

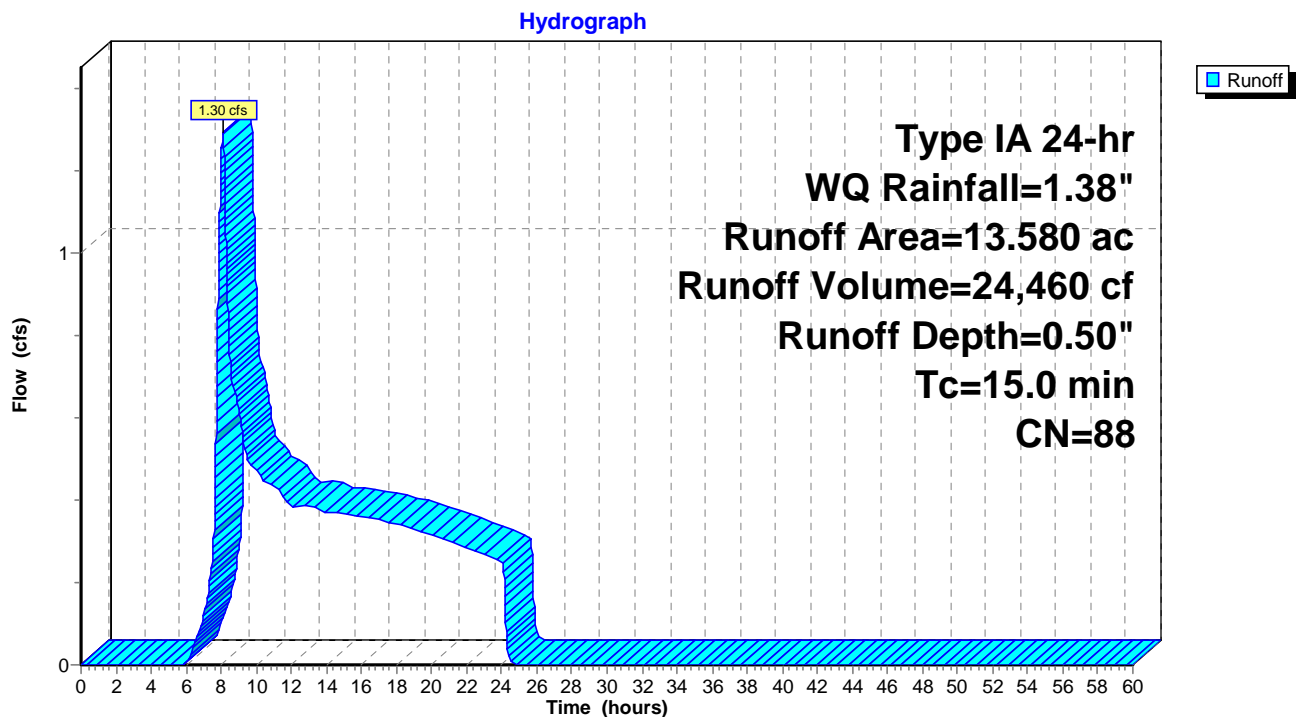
**Summary for Subcatchment 1WQ: Developed Conditions (Basin #1)**

Runoff = 1.30 cfs @ 8.09 hrs, Volume= 24,460 cf, Depth= 0.50"

Runoff by SCS TR-20 method, UH=SCS, Weighted-CN, Time Span= 0.00-60.00 hrs, dt= 0.01 hrs  
Type IA 24-hr WQ Rainfall=1.38"

Area (ac)	CN	Description
5.430	74	>75% Grass cover, Good, HSG C
* 8.150	98	Impervious surface, HSG C
13.580	88	Weighted Average
5.430		39.99% Pervious Area
8.150		60.01% Impervious Area

Tc (min)	Length (feet)	Slope (ft/ft)	Velocity (ft/sec)	Capacity (cfs)	Description
15.0					Direct Entry, Direct Entry

**Subcatchment 1WQ: Developed Conditions (Basin #1)**

**20210420 WQ**

Type IA 24-hr WQ Rainfall=1.38"

Prepared by Multitech Engineering Services, Inc.

Printed 4/21/2021

HydroCAD® 10.10-4a s/n 09412 © 2020 HydroCAD Software Solutions LLC

**Summary for Pond WQ1: Water Quality Media**

Inflow Area = 591,545 sf, 60.01% Impervious, Inflow Depth = 0.50" for WQ event  
 Inflow = 1.30 cfs @ 8.09 hrs, Volume= 24,460 cf  
 Outflow = 0.43 cfs @ 7.71 hrs, Volume= 24,460 cf, Atten= 67%, Lag= 0.0 min  
 Primary = 0.43 cfs @ 7.71 hrs, Volume= 24,460 cf  
 Secondary = 0.00 cfs @ 0.00 hrs, Volume= 0 cf

Routing by Stor-Ind method, Time Span= 0.00-60.00 hrs, dt= 0.01 hrs  
 Peak Elev= 293.26' @ 11.09 hrs Surf.Area= 9,350 sf Storage= 2,544 cf  
 Flood Elev= 299.00' Surf.Area= 9,350 sf Storage= 56,193 cf

Plug-Flow detention time= 53.7 min calculated for 24,456 cf (100% of inflow)  
 Center-of-Mass det. time= 53.7 min ( 911.3 - 857.6 )

Volume	Invert	Avail.Storage	Storage Description
#1	292.99'	65,543 cf	<b>Custom Stage Data (Prismatic)</b> Listed below (Recalc)

Elevation (feet)	Surf.Area (sq-ft)	Voids (%)	Inc.Store (cubic-feet)	Cum.Store (cubic-feet)
292.99	9,350	0.0	0	0
293.00	9,350	100.0	93	93
294.00	9,350	100.0	9,350	9,443
295.00	9,350	100.0	9,350	18,793
296.00	9,350	100.0	9,350	28,143
297.00	9,350	100.0	9,350	37,493
298.00	9,350	100.0	9,350	46,843
299.00	9,350	100.0	9,350	56,193
300.00	9,350	100.0	9,350	65,543

Device	Routing	Invert	Outlet Devices
#1	Primary	292.99'	<b>2.000 in/hr Exfiltration over Surface area</b>
#2	Secondary	293.50'	<b>24.0" Horiz. Beehive Overflow</b> C= 0.600 Limited to weir flow at low heads

**Primary OutFlow** Max=0.43 cfs @ 7.71 hrs HW=293.00' (Free Discharge)  
 ↑ **1=Exfiltration** (Exfiltration Controls 0.43 cfs)

**Secondary OutFlow** Max=0.00 cfs @ 0.00 hrs HW=292.99' (Free Discharge)  
 ↑ **2=Beehive Overflow** ( Controls 0.00 cfs)

20210420 WQ

Prepared by Multitech Engineering Services, Inc.

HydroCAD® 10.10-4a s/n 09412 © 2020 HydroCAD Software Solutions LLC

Type IA 24-hr WQ Rainfall=1.38"

Printed 4/21/2021

## Pond WQ1: Water Quality Media

Hydrograph

