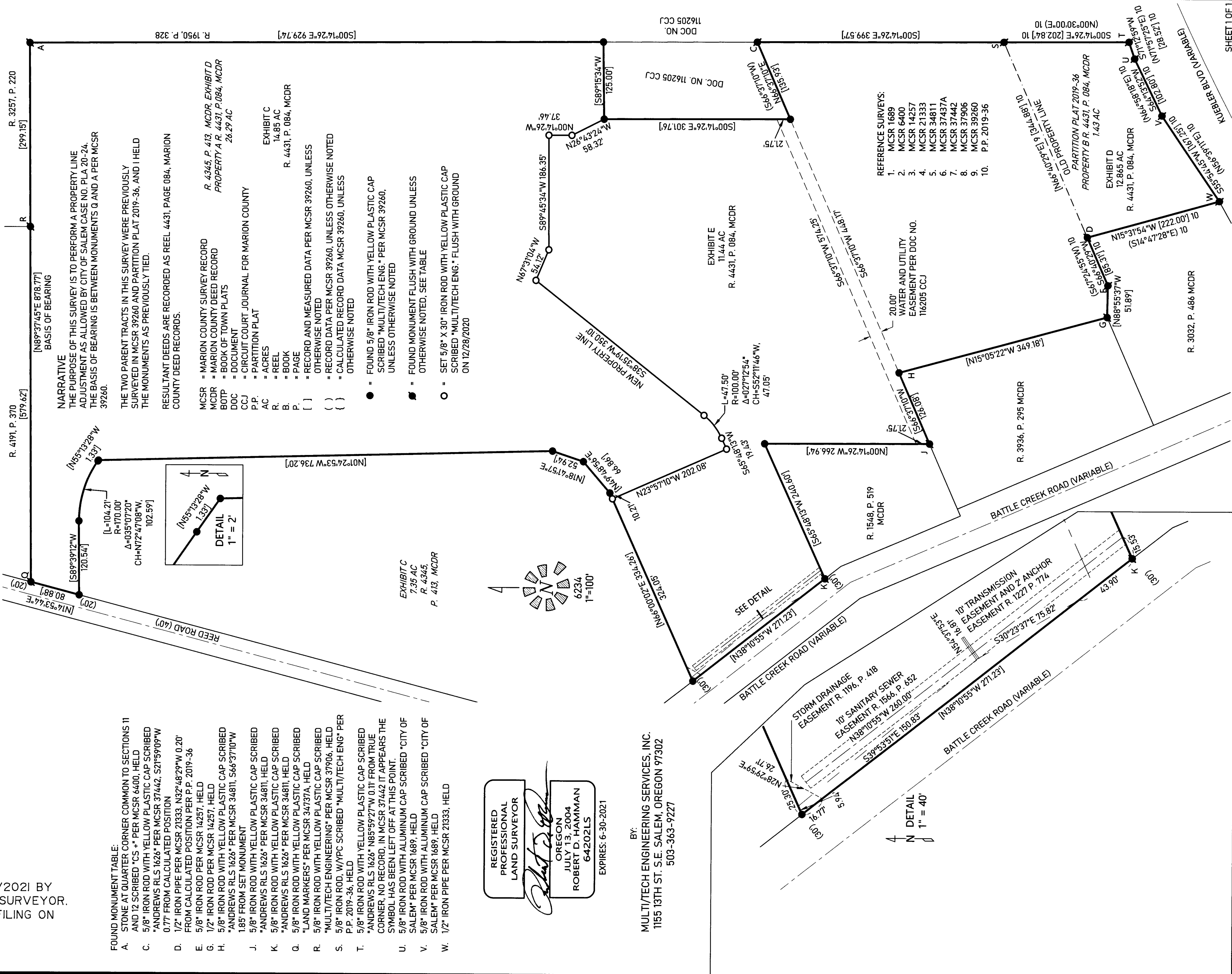


RECORD OF SURVEY PROPERTY LINE ADJUSTMENT IN THE SE 1/4 SEC. 11, T. 8 S., R. 3 W., W.M. CITY OF SALEM, MARION COUNTY, OREGON

DATE OF MAP 03/04/2021



NARRATIVE
THE PURPOSE OF THIS SURVEY IS TO PERFORM A PROPERTY LINE ADJUSTMENT AS ALLOWED BY CITY OF SALEM CASE NO. PLA 20-24. THE BASIS OF BEARING IS BETWEEN MONUMENTS Q AND A PER MCSR 39260.

THE TWO PARENT TRACTS IN THIS SURVEY WERE PREVIOUSLY SURVEYED IN MCSR 39260 AND PARTITION PLAT 2019-36, AND I HELD THE MONUMENTS AS PREVIOUSLY TIED.

RESULTANT DEEDS ARE RECORDED AS REEL 4431, PAGE 084, MARION COUNTY DEED RECORDS.

MCSR = MARION COUNTY SURVEY RECORD
MCDR = MARION COUNTY DEED RECORD
BOTP = BOOK OF TOWN PLATS
DOC = DOCUMENT
CCJ = CIRCUIT COURT JOURNAL FOR MARION COUNTY
P.P. = PARTITION PLAT
AC = ACRES
R. = REEL
B. = BOOK
P. = PAGE
[] = RECORD AND MEASURED DATA PER MCSR 39260, UNLESS OTHERWISE NOTED
() = RECORD DATA PER MCSR 39260, UNLESS OTHERWISE NOTED
{ } = CALCULATED RECORD DATA MCSR 39260, UNLESS OTHERWISE NOTED

● = FOUND 5/8" IRON ROD WITH YELLOW PLASTIC CAP SCRIBED "MULTI/TECH ENG." PER MCSR 39260, UNLESS OTHERWISE NOTED

◐ = FOUND MONUMENT FLUSH WITH GROUND UNLESS OTHERWISE NOTED, SEE TABLE

○ = SET 5/8" X 30" IRON ROD WITH YELLOW PLASTIC CAP SCRIBED "MULTI/TECH ENG." FLUSH WITH GROUND ON 12/28/2020

EXHIBIT C
7.35 AC
R. 4345,
P. 413, MCDR

EXHIBIT D
12.865 AC
R. 4431, P. 084, MCDR

EXHIBIT E
11.44 AC
R. 4431, P. 084, MCDR

EXHIBIT F
14.85 AC
R. 4431, P. 084, MCDR

EXHIBIT G
12.865 AC
R. 4431, P. 084, MCDR

EXHIBIT H
12.865 AC
R. 4431, P. 084, MCDR

EXHIBIT I
12.865 AC
R. 4431, P. 084, MCDR

EXHIBIT J
12.865 AC
R. 4431, P. 084, MCDR

EXHIBIT K
12.865 AC
R. 4431, P. 084, MCDR

EXHIBIT L
12.865 AC
R. 4431, P. 084, MCDR

EXHIBIT M
12.865 AC
R. 4431, P. 084, MCDR

EXHIBIT N
12.865 AC
R. 4431, P. 084, MCDR

EXHIBIT O
12.865 AC
R. 4431, P. 084, MCDR

EXHIBIT P
12.865 AC
R. 4431, P. 084, MCDR

EXHIBIT Q
12.865 AC
R. 4431, P. 084, MCDR

EXHIBIT R
12.865 AC
R. 4431, P. 084, MCDR

EXHIBIT S
12.865 AC
R. 4431, P. 084, MCDR

EXHIBIT T
12.865 AC
R. 4431, P. 084, MCDR

EXHIBIT U
12.865 AC
R. 4431, P. 084, MCDR

EXHIBIT V
12.865 AC
R. 4431, P. 084, MCDR

EXHIBIT W
12.865 AC
R. 4431, P. 084, MCDR

EXHIBIT X
12.865 AC
R. 4431, P. 084, MCDR

EXHIBIT Y
12.865 AC
R. 4431, P. 084, MCDR

EXHIBIT Z
12.865 AC
R. 4431, P. 084, MCDR

EXHIBIT AA
12.865 AC
R. 4431, P. 084, MCDR

EXHIBIT AB
12.865 AC
R. 4431, P. 084, MCDR

EXHIBIT AC
12.865 AC
R. 4431, P. 084, MCDR

EXHIBIT AD
12.865 AC
R. 4431, P. 084, MCDR

EXHIBIT AE
12.865 AC
R. 4431, P. 084, MCDR

EXHIBIT AF
12.865 AC
R. 4431, P. 084, MCDR

EXHIBIT AG
12.865 AC
R. 4431, P. 084, MCDR

EXHIBIT AH
12.865 AC
R. 4431, P. 084, MCDR

EXHIBIT AI
12.865 AC
R. 4431, P. 084, MCDR

EXHIBIT AJ
12.865 AC
R. 4431, P. 084, MCDR

EXHIBIT AK
12.865 AC
R. 4431, P. 084, MCDR

EXHIBIT AL
12.865 AC
R. 4431, P. 084, MCDR

EXHIBIT AM
12.865 AC
R. 4431, P. 084, MCDR

EXHIBIT AN
12.865 AC
R. 4431, P. 084, MCDR

EXHIBIT AO
12.865 AC
R. 4431, P. 084, MCDR

EXHIBIT AP
12.865 AC
R. 4431, P. 084, MCDR

EXHIBIT AQ
12.865 AC
R. 4431, P. 084, MCDR

EXHIBIT AR
12.865 AC
R. 4431, P. 084, MCDR

EXHIBIT AS
12.865 AC
R. 4431, P. 084, MCDR

EXHIBIT AT
12.865 AC
R. 4431, P. 084, MCDR

EXHIBIT AU
12.865 AC
R. 4431, P. 084, MCDR

EXHIBIT AV
12.865 AC
R. 4431, P. 084, MCDR

EXHIBIT AW
12.865 AC
R. 4431, P. 084, MCDR

EXHIBIT AX
12.865 AC
R. 4431, P. 084, MCDR

EXHIBIT AY
12.865 AC
R. 4431, P. 084, MCDR

EXHIBIT AZ
12.865 AC
R. 4431, P. 084, MCDR

- FOUND MONUMENT TABLE:**
- A. STONE AT QUARTER CORNER COMMON TO SECTIONS 11 AND 12 SCRIBED "CS + PER MCSR 6400, HELD
 - C. 5/8" IRON ROD WITH YELLOW PLASTIC CAP SCRIBED "ANDREWS RLS 1626" PER MCSR 37442, 52°39'09"W 0.77' FROM CALCULATED POSITION
 - D. 1/2" IRON PIPE PER MCSR 21333, N32°48'29"W 0.20' FROM CALCULATED POSITION PER P.P. 2019-36
 - E. 5/8" IRON ROD PER MCSR 14257, HELD
 - G. 1/2" IRON ROD PER MCSR 14257, HELD
 - H. 5/8" IRON ROD WITH YELLOW PLASTIC CAP SCRIBED "ANDREWS RLS 1626" PER MCSR 34811, S66°37'10"W 1.85' FROM SET MONUMENT
 - J. 5/8" IRON ROD WITH YELLOW PLASTIC CAP SCRIBED "ANDREWS RLS 1626" PER MCSR 34811, HELD
 - K. 5/8" IRON ROD WITH YELLOW PLASTIC CAP SCRIBED "ANDREWS RLS 1626" PER MCSR 34811, HELD
 - Q. 5/8" IRON ROD WITH YELLOW PLASTIC CAP SCRIBED "LAND MARKERS" PER MCSR 34737A, HELD
 - R. 5/8" IRON ROD WITH YELLOW PLASTIC CAP SCRIBED "MULTI/TECH ENGINEERING" PER MCSR 37906, HELD
 - S. 5/8" IRON ROD, W/IPC SCRIBED "MULTI/TECH ENG" PER P.P. 2019-36, HELD
 - T. 5/8" IRON ROD WITH YELLOW PLASTIC CAP SCRIBED "ANDREWS RLS 1626" N85°59'27"W 0.11' FROM TRUE CORNER, NO RECORD, IN MCSR 37442 IT APPEARS THE SYMBOL HAS BEEN LEFT OFF AT THIS POINT.
 - U. 5/8" IRON ROD WITH ALUMINUM CAP SCRIBED "CITY OF SALEM" PER MCSR 1689, HELD
 - V. 5/8" IRON ROD WITH ALUMINUM CAP SCRIBED "CITY OF SALEM" PER MCSR 1689, HELD
 - W. 1/2" IRON PIPE PER MCSR 21333, HELD

REGISTERED PROFESSIONAL LAND SURVEYOR
Robert D. Hamman
OREGON
JULY 13, 2004
ROBERT D. HAMMAN
64202LS
EXPIRES: 6-30-2021

BY:
MULTI/TECH ENGINEERING SERVICES, INC.
1155 13TH ST. S.E. SALEM, OREGON 97302
503-363-9227

RECEIVED 02/03/2021 BY
MARION COUNTY SURVEYOR.
APPROVED FOR FILING ON
03/09/2021.