

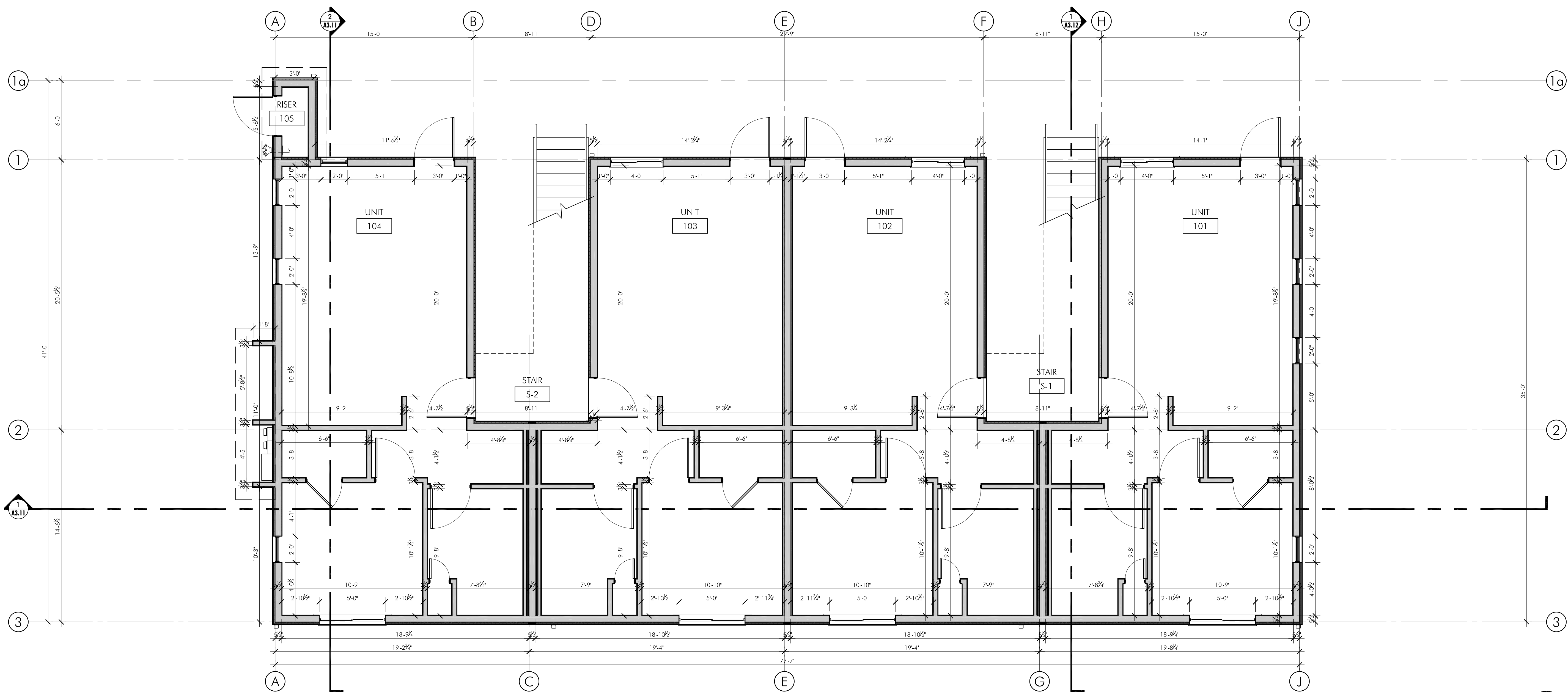
IN THE EVENT CONFLICTS ARE DISCOVERED
BETWEEN THE ORIGINAL SIGNED AND SEALED
DOCUMENTS PREPARED BY THE ARCHITECTS
AND/OR THEIR CONSULTANTS, AND ANY COPY OF
THE DOCUMENTS TRANSMITTED BY MAIL, FAX,
ELECTRONICALLY OR OTHERWISE, THE ORIGINAL
SIGNED AND SEALED DOCUMENTS SHALL COVER.

PROJECT # 2020-051
DATE: 24 JAN 2022
REVISIONS

NEW APARTMENT BUILDING:
L O C K W O O D
701 LOCKWOOD STREET SE, SALEM, OREGON

SHEET

A1.31



1 LEVEL 01 - DIMENSION PLAN

0' 1' 2' 4' 8' 12' 1/4" = 1'-0" @ 22X34



GENERAL NOTES:

1. GENERAL NOTES APPLY TO ALL DRAWINGS.

2. CONTRACTORS SHALL VERIFY ALL DIMENSIONS AND CONDITIONS ON THE DRAWINGS AND ON THE JOB SITE PRIOR TO EXECUTION OF ANY WORK, AND SHALL NOTIFY THE ARCHITECT OF ANY DISCREPANCY. CONTRACTOR SHALL BE RESPONSIBLE FOR ALL COSTS INCURRED DUE TO HIS FAILURE TO DO SO.

3. WHERE THE INTENT OF THE DRAWINGS IS IN DOUBT, OR WHERE THERE APPEARS TO BE AN ERROR ON THE DRAWINGS, OR WHERE THERE IS A DISCREPANCY BETWEEN THE DRAWINGS AND THE FIELD, THE ARCHITECT (AND ENGINEER WHERE APPLICABLE) SHALL BE NOTIFIED AS SOON AS REASONABLY POSSIBLE FOR THE PROCEDURE TO FOLLOW. DO NOT SCALE THE DRAWINGS.

4. ALL REVISIONS MUST BE APPROVED IN WRITING BY BOTH THE OWNER AND THE ARCHITECT PRIOR TO THE CONSTRUCTION OF ANY DEVIATION IN THE SCOPE OF WORK.

5. DIMENSIONS ARE TO FACE OF FRAMING OR FACE OF CONCRETE, U.N.O. DIMENSIONS STATED AS CLEAR ARE TO FACE OF FINISH.

6. ALL DOORS TO BE 3" FROM FACE OF FRAMING TO ROUGH OPENING, U.N.O.

7. ALL OPENINGS ARE DIMENSIONED FROM CENTER OF OPENING TO FACE OF FRAMING, U.N.O.

8. SEE STRUCTURAL DRAWINGS FOR SHEAR WALL LOCATIONS. WHERE NON-SHEAR WALLS ARE IN THE SAME PLANE, CONTINUE SHEATHING LAYER TO NEAREST CORNER TO ENSURE CONTINUITY.
9. WALL MATERIAL MAY CHANGE AT WALL INTERSECTIONS, REVIEW SECTIONS AND ELEVATIONS FOR ADDED INFORMATION.

10. PROVIDE FIRE BLOCKING IN CONCEALED SPACES OF WALLS, PARTITIONS AND FURRED SPACES AT 10'-0" O.C. IN ALL DIRECTIONS AND AT ALL INTERCONNECTIONS BETWEEN CONCEALED VERTICAL AND HORIZONTAL SPACES.

11. ADDITIONAL FRAMING, BLOCKING AND FINISHES SHALL BE PROVIDED AS REQUIRED FOR PLUMBING ACCESS PANELS.

12. ALL MATERIALS AND WORKMANSHIP SHALL CONFORM WITH ALL STATE AND LOCAL JURISDICTIONS AND REGULATORS.

13. WHERE WALLS WITH DIFFERING LAYERS OF GYP ARE IN THE SAME PLANE, ADD ADDITIONAL LAYERS OF GYP TO ENSURE CONTINUOUS FINISH SURFACE. CONTINUE ADDITIONAL LAYERS TO NEAREST CORNER.

14. AT ALL BATH AND TOILET ROOMS, AS WELL AS ALL WET WALLS IN KITCHENS, PROVIDE WATER RESISTANT GYPSUM BOARD AS FACE LAYER ON ALL GYPSUM BOARD WALL AND CEILING ASSEMBLIES.

15. REFER TO CODE REVIEW SHEETS FOR FIRE RATING. REFER TO WALL TYPES SHEETS FOR CONSTRUCTION OF WALLS AND FLOORS IN RATED CONDITIONS.

16. PROVIDE UL APPROVED THROUGH PENETRATIONS AND MEMBRANE PENETRATION FIRESTOP SYSTEMS AS REQUIRED BY CODE AT ALL ELECTRICAL, PLUMBING AND MECHANICAL PENETRATION IN FIRE RATED ASSEMBLIES.

FLOOR PLAN KEYNOTES:

1. WATER HEATER.

2. CLOSET SHELF AND ROD, PAINTED.

3. STACKED WASHER DRYER UNIT.

4. ACCESSIBLE STACKED WASHER/DRYER UNIT.

5. ELECTRICAL PANEL WITH 30" x 48" CLEAR SPACE.

6. RADON MITIGATION, SEE DETAIL #/A5.4#.

7. ELECTRIC WALL HEATER.

8. PTHP.

9. FDC (FIRE DEPARTMENT CONNECTION).
10. PROVIDE SIGN AT DOOR INDICATING FIRE RISER ROOM.

11. CONCRETE PATIO, SLOPE 1/4" PER 12' AWAY FROM BUILDING.

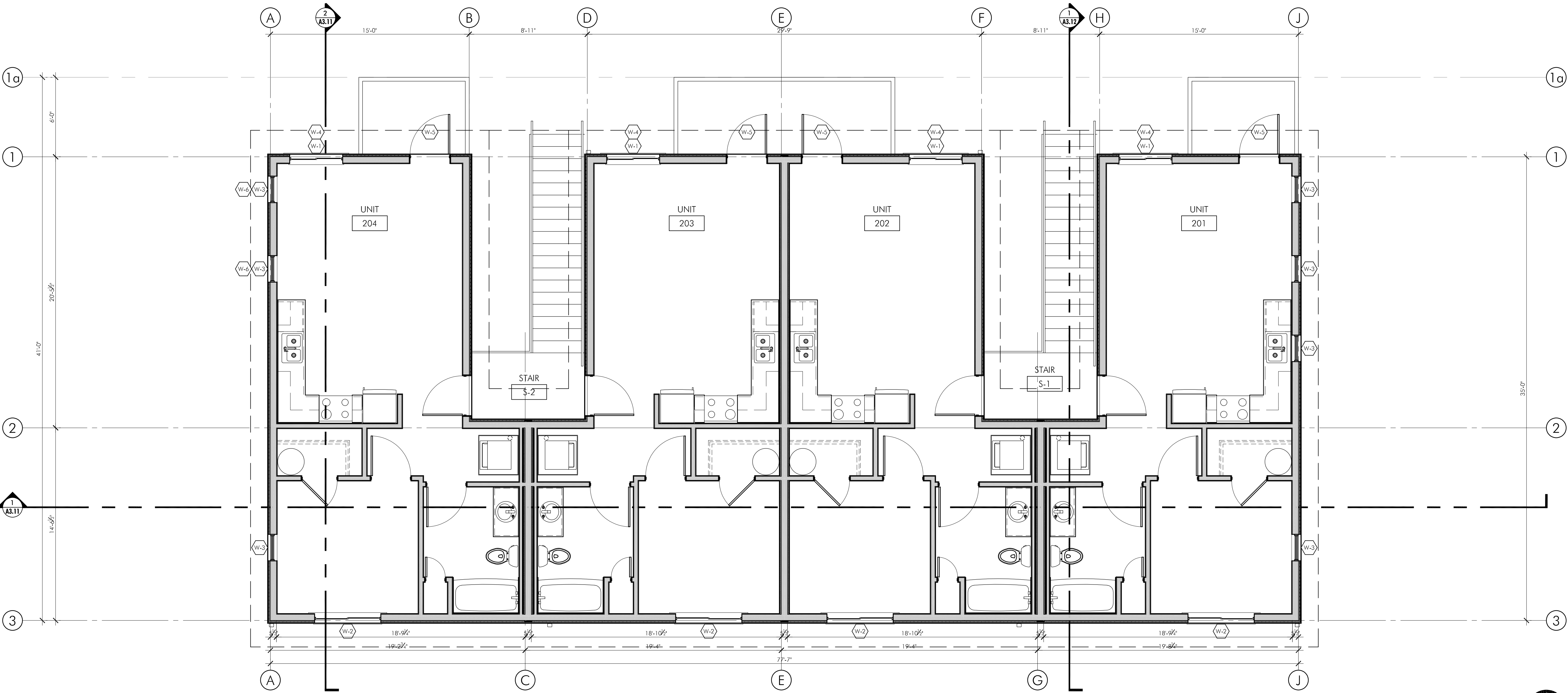
12. LAUNDRY UPPERS, SEE DETAIL 4-A/A2.51

13. RECESSED FIRE EXTINGUISHER CABINET WITH FIRE EXTINGUISHER.

14. DECORATIVE SCREEN, SEE DETAIL #/A5.2#

15. WOOD BALCONY WITH WOOD GUARDRAIL, SEE DETAIL #/A5.2#.

16. PREFINISHED METAL DOWNSPOUT.



1 LEVEL 02 - FLOOR PLAN

0' 1' 2' 4' 8' 12' 1/4" = 1'-0" @ 22X34



IN THE EVENT CONFLICTS ARE DISCOVERED BETWEEN THE ORIGINAL SIGNED AND SEALED DOCUMENTS PREPARED BY THE ARCHITECTS AND/OR THEIR CONSULTANTS, AND ANY COPY OF THE DOCUMENTS TRANSMITTED BY MAIL, FAX, ELECTRONICALLY OR OTHERWISE, THE ORIGINAL SIGNED AND SEALED DOCUMENTS SHALL GOVERN.

PROJECT # 2020-051
DATE: 24 JAN 2022
REVISIONS

NEW APARTMENT BUILDING:
LOCKWOOD
701 LOCKWOOD STREET SE, SALEM, OREGON

SHEET

A1.22

1. GENERAL NOTES APPLY TO ALL DRAWINGS.
2. CONTRACTORS SHALL VERIFY ALL DIMENSIONS AND CONDITIONS ON THE DRAWINGS AND ON THE JOB SITE PRIOR TO EXECUTION OF ANY WORK, AND SHALL NOTIFY THE ARCHITECT OF ANY DISCREPANCY. CONTRACTOR SHALL BE RESPONSIBLE FOR ALL COSTS INCURRED DUE TO HIS FAILURE TO DO SO.
3. WHERE THE INTENT OF THE DRAWINGS IS IN DOUBT, OR WHERE THERE APPEARS TO BE AN ERROR ON THE DRAWINGS, OR WHERE THERE IS A DISCREPANCY BETWEEN THE DRAWINGS AND THE FIELD, THE ARCHITECT (AND ENGINEER WHERE APPLICABLE) SHALL BE NOTIFIED AS SOON AS REASONABLY POSSIBLE FOR THE PROCEDURE TO FOLLOW. DO NOT SCALE THE DRAWINGS.
4. ALL REVISIONS MUST BE APPROVED IN WRITING BY BOTH THE OWNER AND THE ARCHITECT PRIOR TO THE CONSTRUCTION OF ANY DEVIATION IN THE SCOPE OF WORK.
5. DIMENSIONS ARE TO FACE OF FRAMING OR FACE OF CONCRETE, U.N.O. DIMENSIONS STATED AS CLEAR ARE TO FACE OF FINISH.
6. ALL DOORS TO BE 3" FROM FACE OF FRAMING TO ROUGH OPENING, U.N.O.
7. ALL OPENINGS ARE DIMENSIONED FROM CENTER OF OPENING TO FACE OF FRAMING, U.N.O.
8. SEE STRUCTURAL DRAWINGS FOR SHEAR WALL LOCATIONS. WHERE NON-SHEAR WALLS ARE IN THE SAME PLANE, CONTINUE SHEATHING LAYER TO NEAREST CORNER TO ENSURE CONTINUITY.

9. WALL MATERIAL MAY CHANGE AT WALL INTERSECTIONS, REVIEW SECTIONS AND ELEVATIONS FOR ADDED INFORMATION.
10. PROVIDE FIRE BLOCKING IN CONCEALED SPACES OF WALLS, PARTITIONS AND FURRED SPACES AT 10'-0" O.C. IN ALL DIRECTIONS AND AT ALL INTERCONNECTIONS BETWEEN CONCEALED VERTICAL AND HORIZONTAL SPACES.
11. ADDITIONAL FRAMING, BLOCKING AND FINISHES SHALL BE PROVIDED AS REQUIRED FOR PLUMBING ACCESS PANELS.
12. ALL MATERIALS AND WORKMANSHIP SHALL CONFORM WITH ALL STATE AND LOCAL JURISDICTIONS AND REGULATORS.
13. WHERE WALLS WITH DIFFERING LAYERS OF GYP ARE IN THE SAME PLANE, ADD ADDITIONAL LAYERS OF GYP TO ENSURE CONTINUOUS FINISH SURFACE. CONTINUE ADDITIONAL LAYERS TO NEAREST CORNER.
14. AT ALL BATH AND TOILET ROOMS, AS WELL AS ALL WET WALLS IN KITCHENS, PROVIDE WATER RESISTANT GYPSUM BOARD AS FACE LAYER ON ALL GYPSUM BOARD WALL AND CEILING ASSEMBLIES.
15. REFER TO CODE REVIEW SHEETS FOR FIRE RATING. REFER TO WALL TYPES SHEETS FOR CONSTRUCTION OF WALLS AND FLOORS IN RATED CONDITIONS.
16. PROVIDE UL APPROVED THROUGH PENETRATIONS AND MEMBRANE PENETRATION FIRESTOP SYSTEMS AS REQUIRED BY CODE AT ALL ELECTRICAL, PLUMBING AND MECHANICAL PENETRATION IN FIRE RATED ASSEMBLIES.

1	WATER HEATER.	10	PROVIDE SIGN AT DOOR INDICATING FIRE RISER ROOM.
2	CLOSET SHELF AND ROD, PAINTED.	11	CONCRETE PATIO, SLOPE $\frac{1}{4}"$ PER 12' AWAY FROM BUILDING.
3	STACKED WASHER DRYER UNIT.	12	LAUNDRY UPPERS, SEE DETAIL 4-A/A2.51
4	ACCESSIBLE STACKED WASHER/DRYER UNIT.	13	RECESSED FIRE EXTINGUISHER CABINET WITH FIRE EXTINGUISHER.
5	ELECTRICAL PANEL WITH 30" x 48" CLEAR SPACE.	14	DECORATIVE SCREEN, SEE DETAIL #/A5.2#
6	RADON MITIGATION, SEE DETAIL #/A5.4#.	15	WOOD BALCONY WITH WOOD GUARDRAIL, SEE DETAIL #/A5.2#.
7	ELECTRIC WALL HEATER.	16	PREFINISHED METAL DOWNSPOUT.
8	PTHP.		
9	FDC (FIRE DEPARTMENT CONNECTION).		

- 10 PROVIDE SIGN AT DOOR INDICATING FIRE RISER ROOM.
- 11 CONCRETE PATIO, SLOPE $\frac{1}{4}$ " PER 12' AWAY FROM BUILDING.
- 12 LAUNDRY UPPIERS, SEE DETAIL 4-A/A2.51
- 13 RECESSED FIRE EXTINGUISHER CABINET WITH FIRE EXTINGUISHER.
- 14 DECORATIVE SCREEN, SEE DETAIL #/A5.2#
- 15 WOOD BALCONY WITH WOOD GUARDRAIL, SEE DETAIL #/A5.2#.
- 16 PREFINISHED METAL DOWNSPOUT.

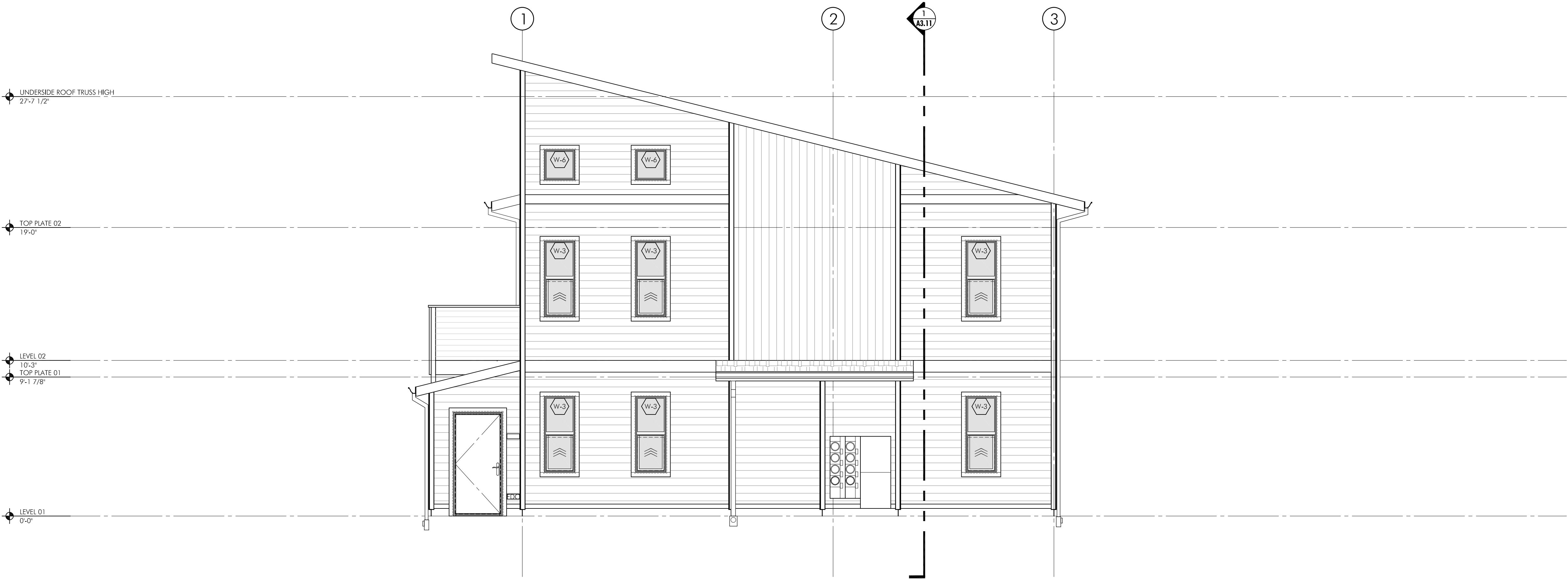


PROJECT # 2020-051
DATE: 24 JAN 2022
REVISIONS

NEW APARTMENT BUILDING:
L O C K W O O D

SHEET

A1.21



1 SOUTH ELEVATION

0' 1' 2' 4' 8' 12' 1/4" = 1'-0"

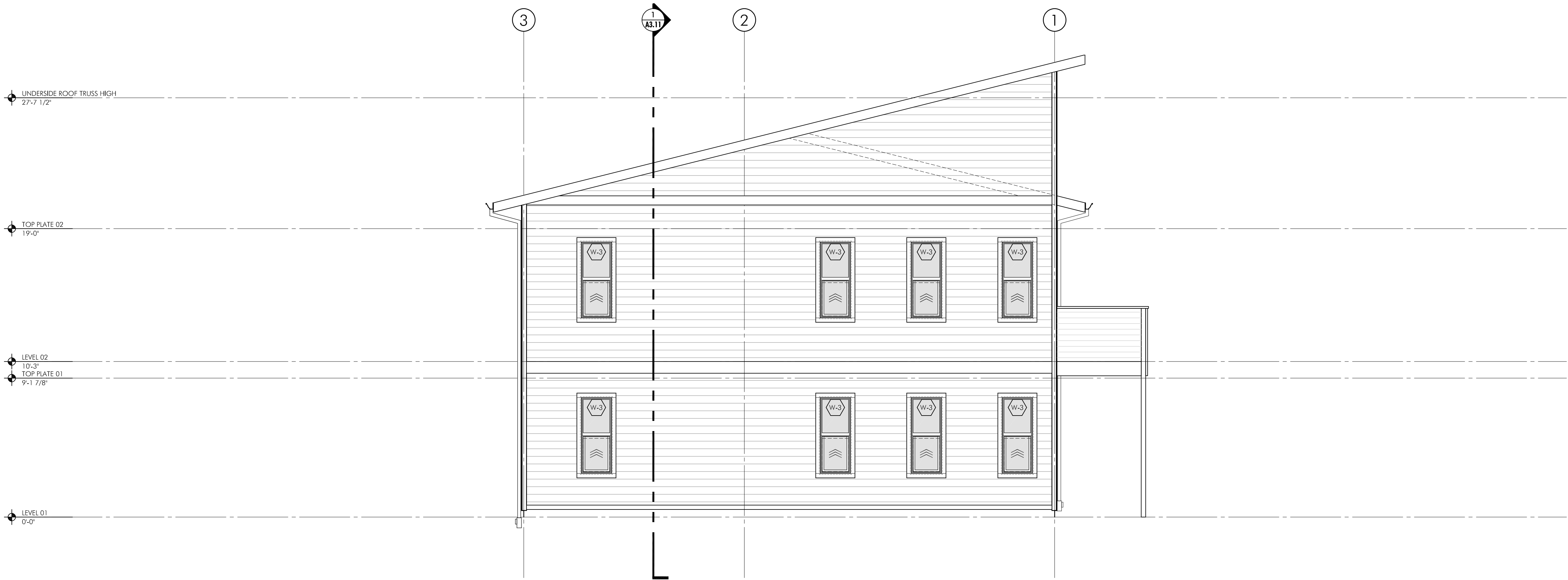


2 WEST ELEVATION

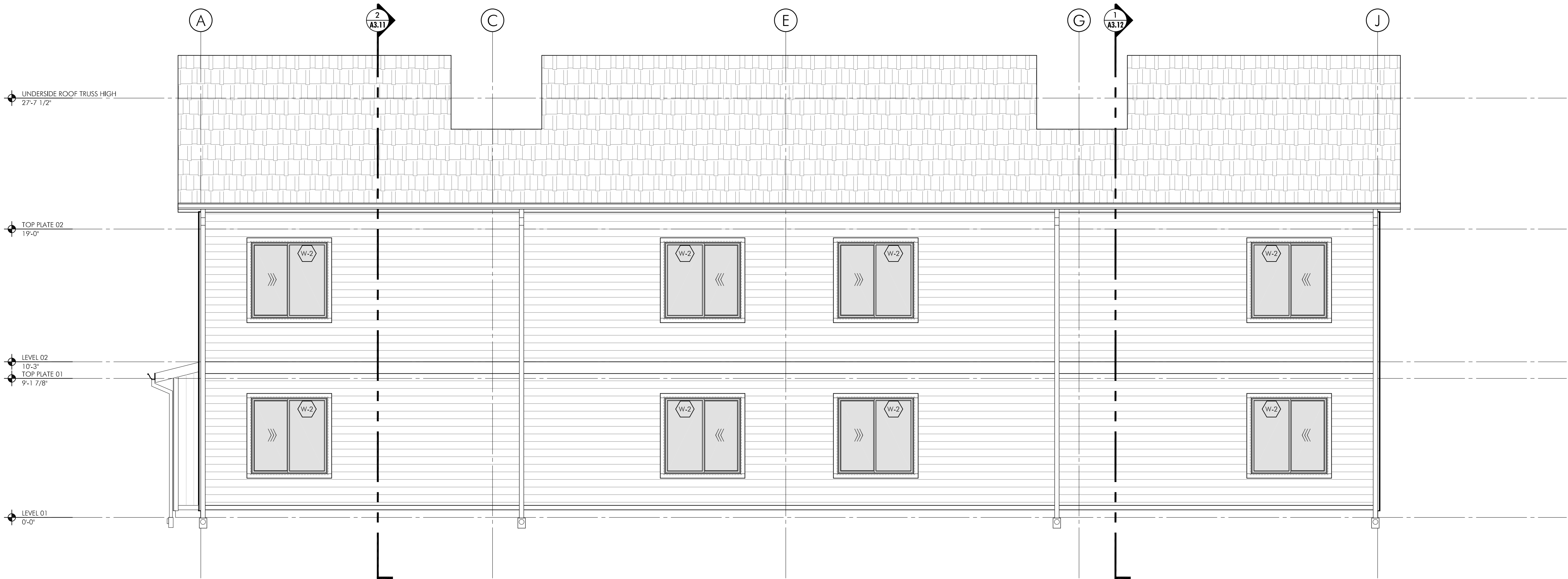
0' 1' 2' 4' 8' 12' 1/4" = 1'-0"

ELEVATION NOTES:

- 1 HORIZONTAL LAPPED FIBER CEMENT SIDING, 6" EXPOSURE, COLOR: PEPPERCORN, SW7674.
- 2 HORIZONTAL LAPPED FIBER CEMENT SIDING, 6" EXPOSURE, COLOR: CLASSIC FRENCH GRAY, SW0077
- 3 HORIZONTAL LAPPED FIBER CEMENT SIDING, 6" EXPOSURE, COLOR: BRICK PAVER, SW7599
- 4 VERTICAL FIBER CEMENT BOARD & BATT SIDING, COLOR: BRICK PAVER, SW7599
- 5 VERTICAL FIBER CEMENT BOARD & BATT SIDING, COLOR: EXTRA WHITE, SW7006
- 6 FIBER CEMENT PANEL SIDING, COLOR: PEPPERCORN, SW7674
- 7 3 1/2" TRIM BOARD AT ALL EXTERIOR CORNERS AND AROUND ALL OPENINGS, COLOR: BLACK MAGIC, SW6991
- 8 9 1/4" TRIM BOARD, COLOR: BLACK MAGIC, SW6991
- 9 6" TRIM BOARD, COLOR: BLACK MAGIC, SW6991
- 10 STAIR LANDING GUARDRAIL, SEE DETAIL 3/ A4.52.
- 11 WALL PACK LIGHT. SEE LIGHT SCHEDULE ON A6.01
- 12 FIBERGLASS CLAD ENTRY OR PATIO DOOR, PAINTED, COLOR: ACCENT COLOR, TBD
- 13 2x8 WOOD FASCIA BOARD, PAINTED, COLOR: BLACK MAGIC, SW6991
- 14 DOOR TO RISER ROOM, PROVIDE EXTERIOR SIGNAGE MOUNTED ADJACENT TO DOOR
- 15 COMPOSITION SHINGLE ROOFING
- 16 WOOD BALCONY. SEE DETAIL #/A2.5#
- 17 PTHP UNIT
- 18 FDC LOCATION WITH SIGNAGE



1 NORTH ELEVATION



2 EAST ELEVATION

ELEVATION NOTES:

- 1 HORIZONTAL LAPPED FIBER CEMENT SIDING, 6" EXPOSURE, COLOR: PEPPERCORN, SW7674.
- 2 HORIZONTAL LAPPED FIBER CEMENT SIDING, 6" EXPOSURE, COLOR: CLASSIC FRENCH GRAY, SW0077
- 3 HORIZONTAL LAPPED FIBER CEMENT SIDING, 6" EXPOSURE, COLOR: BRICK PAVER, SW7599
- 4 VERTICAL FIBER CEMENT BOARD & BATT SIDING, COLOR: BRICK PAVER, SW7599
- 5 VERTICAL FIBER CEMENT BOARD & BATT SIDING, COLOR: EXTRA WHITE, SW7006
- 6 FIBER CEMENT PANEL SIDING, COLOR: PEPPERCORN, SW7674
- 7 3 1/2" TRIM BOARD AT ALL EXTERIOR CORNERS AND AROUND ALL OPENINGS, COLOR: BLACK MAGIC, SW6991
- 8 9 1/4" TRIM BOARD, COLOR: BLACK MAGIC, SW6991
- 9 6" TRIM BOARD, COLOR: BLACK MAGIC, SW6991
- 10 STAIR LANDING GUARDRAIL, SEE DETAIL 3/ A4.52.
- 11 WALL PACK LIGHT. SEE LIGHT SCHEDULE ON A6.01
- 12 FIBERGLASS CLAD ENTRY OR PATIO DOOR, PAINTED, COLOR: ACCENT COLOR, TBD
- 13 2x8 WOOD FASCIA BOARD, PAINTED, COLOR: BLACK MAGIC, SW6991
- 14 DOOR TO RISER ROOM, PROVIDE EXTERIOR SIGNAGE MOUNTED ADJACENT TO DOOR
- 15 COMPOSITION SHINGLE ROOFING
- 16 WOOD BALCONY. SEE DETAIL #/A2.5#
- 17 PTHP UNIT
- 18 FDC LOCATION WITH SIGNAGE

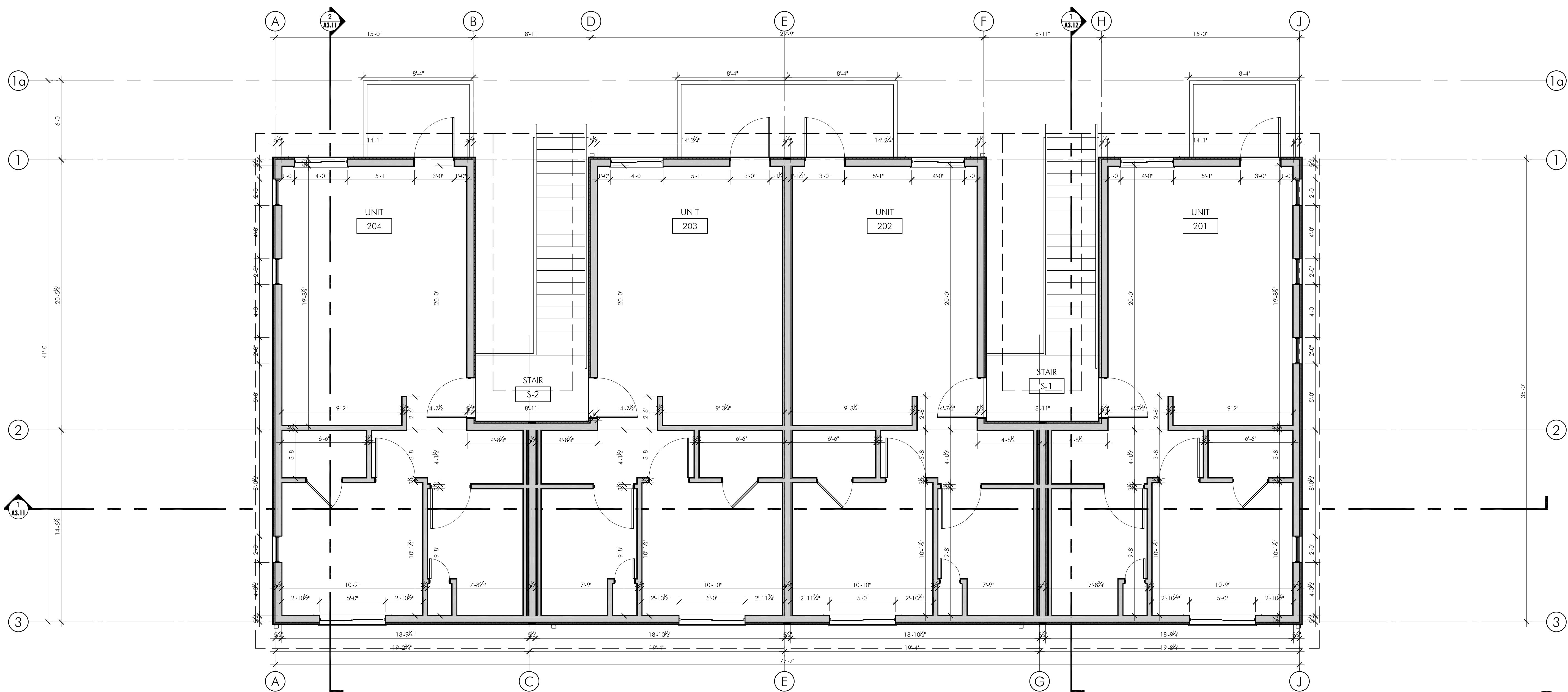
IN THE EVENT CONFLICTS ARE DISCOVERED
BETWEEN THE ORIGINAL SIGNED AND SEALED
DOCUMENTS PREPARED BY THE ARCHITECTS
AND/OR THEIR CONSULTANTS, AND ANY COPY OF
THE DOCUMENTS TRANSMITTED BY MAIL, FAX,
ELECTRONICALLY OR OTHERWISE, THE ORIGINAL
SIGNED AND SEALED DOCUMENTS SHALL COVER.

PROJECT # 2020-051
DATE: 24 JAN 2022
REVISIONS

NEW APARTMENT BUILDING:
L O C K W O O D
701 LOCKWOOD STREET SE, SALEM, OREGON

SHEET

A1.32



1 LEVEL 02 - DIMENSION PLAN

0' 1' 2' 4' 8' 12' 1/4" = 1'-0" @ 22X34