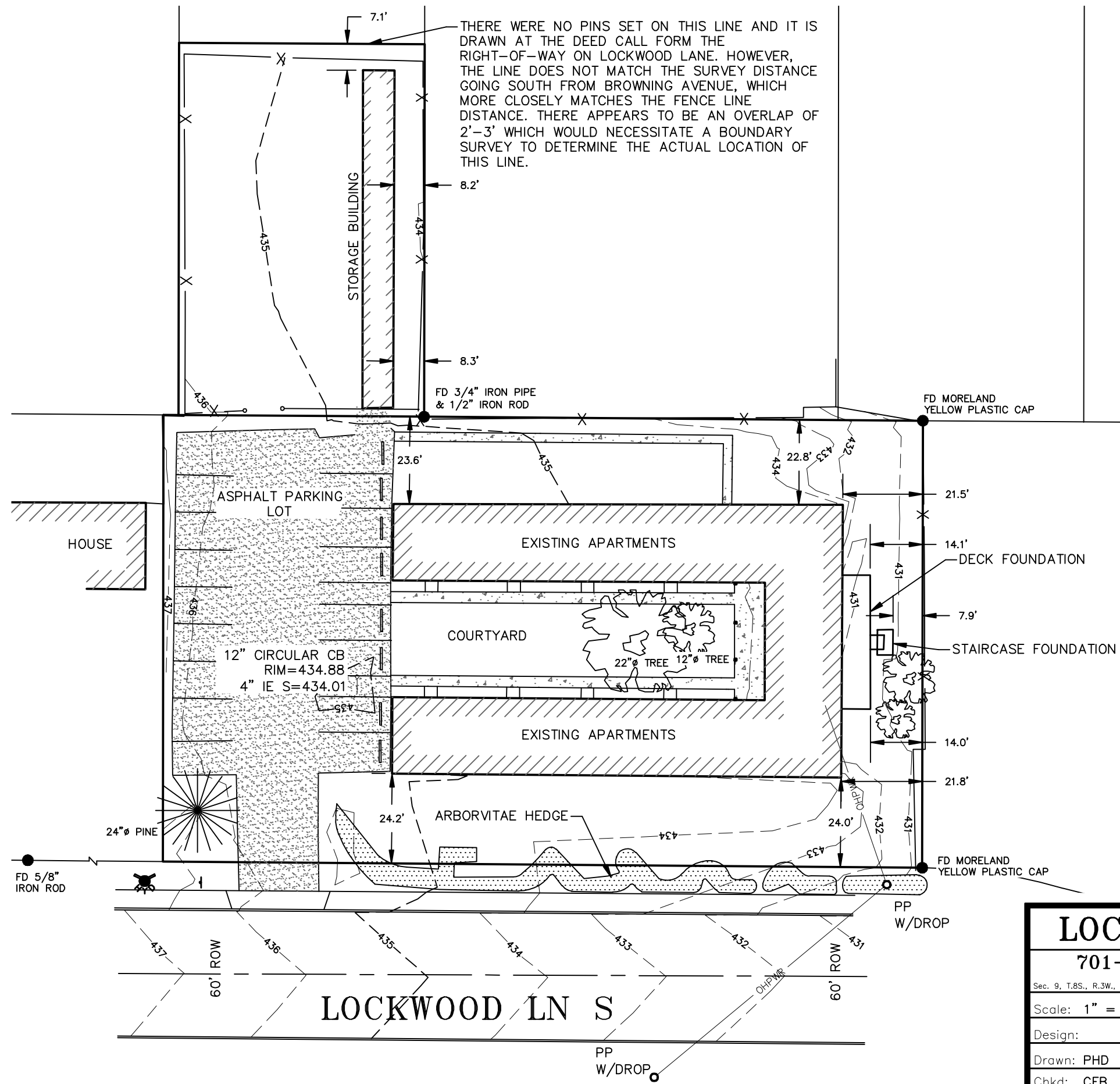
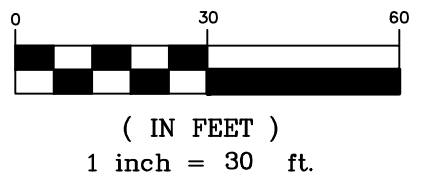


ANDERSON-LOCKWOOD APTS\SITE PLAN.DWG



GRAPHIC SCALE



NOTES:

- ZONED RM II
ZONING BUILDING SETBACKS SRC 514.010 (VERIFY WITH CITY OF SALEM)
ABUTTING STREET-MIN. 12 FT., PLUS ONE FOOT FOR EACH ONE-FOOT OF HEIGHT OVER 12 FT., BUT NOT TO EXCEED 20 FT. IN DEPTH
INTERIOR FRONT & SIDE-MIN. 10 FT.
INTERIOR REAR-MIN. 10 FT.
- ZONING VEHICLE USE AREAS (VERIFY WITH CITY OF SALEM)
ABUTTING STREET-MIN. 12 FT.
INTERIOR FRONT, SIDE, & REAR-MIN 10 FT.
- ELEVATION DATUM WAS BASED ON CITY OF SALEM UTILITY MAPS.

LOCKWOOD APARTMENTS		
701-723 LOCKWOOD LN S, SALEM, OR		
SITE PLAN		
<small>Sec. 9, T.8S., R.3W., W.M. MARION COUNTY, OREGON</small>		
Scale: 1" = 30'	Date: MARCH, 2017	Revised:
Design:	Boatwright Engineering, Inc.	Job No. XXX
Drawn: PHD	2613 12th Street SE, SALEM, OREGON 97302	Sheet
Chkd: CFB	TEL: (503) 363-9225 • FAX: (503) 363-1051	1 of 1

