

**MAIN & UPPER FLOOR PLANS**

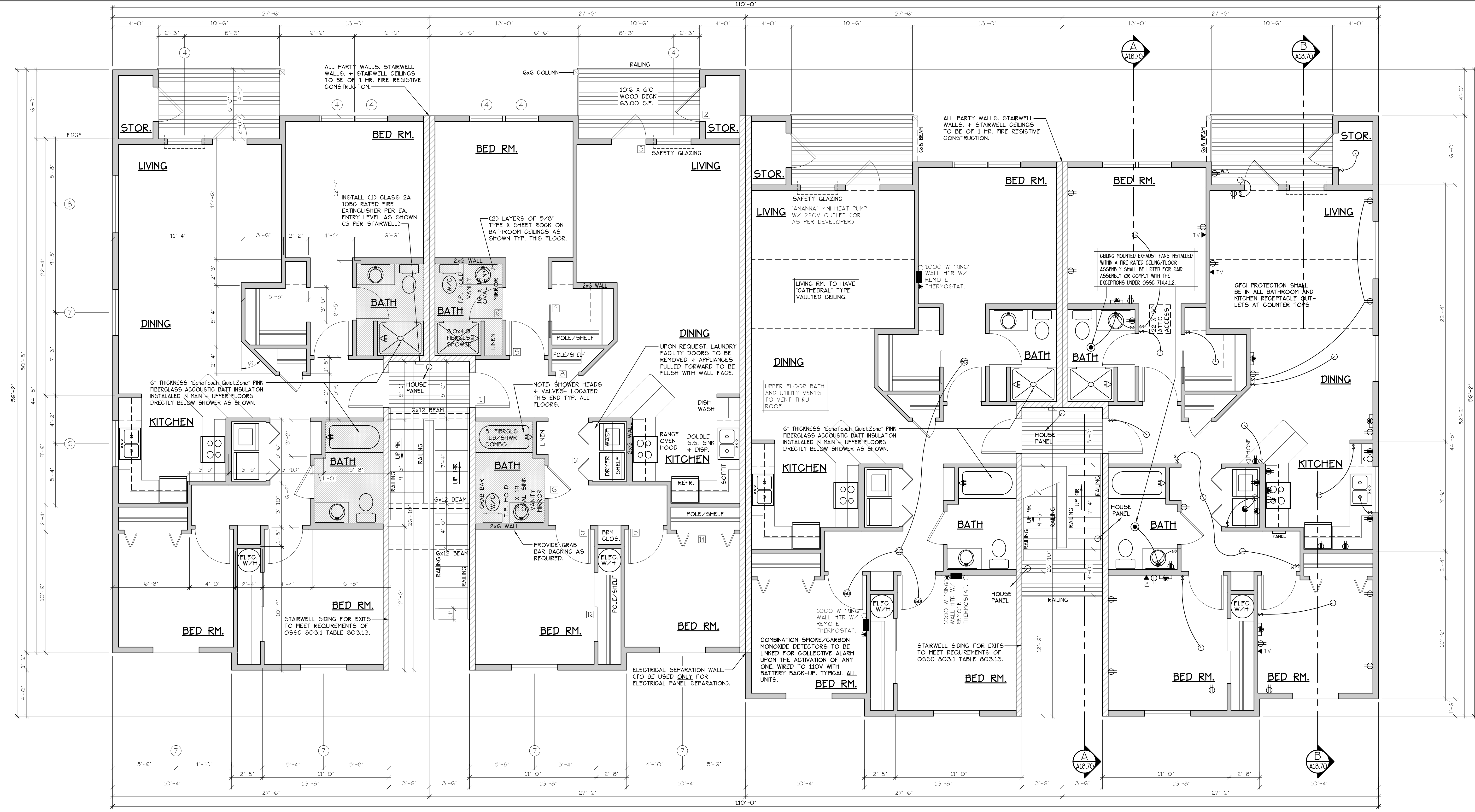
**COBURN APARTMENT COMPLEX**

NO CHANGES, MODIFICATIONS OR REVISIONS TO BE MADE TO THESE PLANS WITHOUT THE WRITTEN AUTHORIZATION FROM THE DESIGN ENGINEER.  
DIMENSIONS & NOTES TAKE PRECEDENCE OVER GRAPHICAL REPRESENTATION.

Design: P.L.M. / A.S. JUNIOR  
Drawn: G.L.D.  
Checked: M.D.G.  
Date: Jun-21  
Scale: AS SHOWN  
JOB # 7192

REGISTERED PROFESSIONAL ENGINEER  
MARK D. GREGG  
JULY 14, 1978  
RENEW DATE: JUN 30, 2021

**A6.41**



**MAIN FLOOR PLAN**  
SCALE: 1/4" = 1'-0"  
\*F\* UNIT = 1210 S.F.

**TYPE F UNITS**  
**BLD. 14**

CONSTRUCTION TYPE V B SPRINKLED  
SEE WALL DETAIL SHEETS FOR SHEETROCK APPLICATION.

EPJ 907.2.10.3 SMOKE ALARMS, SINGLE AND MULTIPLE-STATION SMOKE ALARMS SHALL BE INSTALLED IN ACCORDANCE WITH SECTION 907.2.11.  
EPJ 907.2.11 SINGLE AND MULTIPLE-STATION SMOKE ALARMS, LISTED SINGLE AND MULTIPLE-STATION SMOKE ALARMS COMPLYING WITH UL 217 SHALL BE INSTALLED IN ACCORDANCE WITH SECTIONS 907.2.11.1 THROUGH 907.2.11.4 AND NFPA 72.

**UPPER FLOOR PLAN**  
SCALE: 1/4" = 1'-0"

**NOTES:**  
1. ALL DOOR AND WINDOW HEADERS TO BE #2 4x12 UNLESS NOTED OTHERWISE ON PLANS.  
2. ALL 6x12 BEAMS SPECIFIED ON PLANS TO BE #1 DF.  
3. ALL DOOR HEADERS (INCLUDING PATIO DOORS) TO BE FRAMED AT 6'-0" A.F.F. OR AS PER MFG. SPECIFICATIONS (SEE ELEVATIONS FOR ANY EXCEPTIONS).

NOTE: MAIN + UPPER FLOOR DOORS ARE SIZED THE SAME AS LOWER FLOOR DOORS. DOOR SIZE OPTIONS FOR MAIN + UPPER FLOORS ARE AS FOLLOWS:  
BED RM. = 2'-6" DOOR  
BATH RM. = 2'-4" DOOR.

SEE 'GENERAL STRUCTURAL NOTES' ON SHEET A18.20 BEFORE BEGINNING ANY CONSTRUCTION.

- GENERAL NOTES:**
- ALL EXTERIOR WALLS TO BE 2 X 6 STUDS. ALL OTHER WALLS TO BE 2 X 4 STUDS UNLESS OTHERWISE NOTED.
  - FIRE BLOCK CONCEALED SPACES (VERTICAL + HORIZONTAL) AS PER O55C 718.2.2 AND O55C 718.2.3.
  - PRIOR TO INSTALLATION OF FIBERGLASS TUB/SHOWER + SHOWER UNITS, SHEET ROCK SHALL BE APPLIED TO STUD WALLS AS INDICATED ON PLANS.
  - ALL BATH FANS TO HAVE MIN. 80 CFM RANGE HOOD EXHAUST FANS TO HAVE MIN. 150 CFM.
  - ELECTRIC OUTLETS IN 1 HR. WALL MAY NOT BE BACK TO BACK AND MUST BE SEPARATED BY HORIZONTAL DISTANCE OF 2'-0".
  - ALL EXTERIOR FLOOD LIGHTING SHALL BE CONNECTED TO HOUSE PANELS LOCATED IN ON-SITE UTILITY ROOMS + STORAGE BLD'S.
  - AS PER O55C HIGH-EFFICIENCY LIGHTING SYSTEMS - A MINIMUM OF 50 PERCENT OF THE LAMPS IN PERMANENTLY INSTALLED LIGHTING FIXTURES SHALL BE COMPACT OR LINEAR FLUORESCENT, OR A LIGHTING SOURCE THAT HAS A MINIMUM EFFICACY OF 40 LUMENS PER INPUT WATT.
  - ALL TYPE 'A' ACCESSIBLE UNITS REQUIRE THE PATIO TO BE AT SAME LEVEL AS DWELLING UNIT.

DOOR SCHEDULE										
DOORS					FRAMES					REMARKS
ID	WIDTH	HEIGHT	THICK	TYP.	MATL.	FIN.	TYP.	MATL.	FIN.	
141	3'-0"	6'-8"	1 3/4"	MTL.	CLAD	PAINT	A	METAL	PAINT	6 PANEL 60 MIN RATED ASSY. W/ THRESHOLD, WEATHERSTRIP, CLOSURES.
142	3'-0"	6'-8"	1 3/4"	MTL.	CLAD	PAINT	B	METAL	PAINT	6 PANEL W/ THRESHOLD, WEATHERSTRIP AND KEYS LOCK FULL-LITE, TEMP. GLASS, LOCK, THRESHOLD, WEATHERSTRIP AND INTERIOR BLINDS.
143	3'-0"	6'-8"	1 3/4"	MTL.	CLAD	PAINT	C	METAL	PAINT	6 PANEL W/ THRESHOLD, WEATHERSTRIP AND KEYS LOCK
144	2'-6"	6'-8"	1 3/4"	MTL.	CLAD	PAINT	D	METAL	PAINT	W/ THRESHOLD, WEATHERSTRIP AND KEYS LOCK
145	3'-0"	6'-8"	1 3/8"	H.C.	BIRCH	STAIN	E	HEMLOCK	STAIN	
146	2'-10"	6'-8"	1 3/8"	H.C.	BIRCH	STAIN	F	HEMLOCK	STAIN	
147	2'-6"	6'-8"	1 3/8"	H.C.	BIRCH	STAIN	G	HEMLOCK	STAIN	
148	2'-0"	6'-8"	1 3/8"	H.C.	BIRCH	STAIN	H	HEMLOCK	STAIN	
149	2'-10"	6'-8"	1 3/8"	H.C.	BIRCH	STAIN	I	HEMLOCK	STAIN	POCKET DOOR
150	2'-10"	6'-8"	1 3/8"	H.C.	BIRCH	STAIN	J	HEMLOCK	STAIN	POCKET DOOR
151	4'-0"	6'-8"	1 3/8"	H.C.	BIRCH	STAIN	K	HEMLOCK	STAIN	BI-PASS DOOR
152	5'-8"	6'-8"	1 3/8"	H.C.	BIRCH	STAIN	L	HEMLOCK	STAIN	BI-PASS DOOR
153	6'-0"	6'-8"	1 3/8"	H.C.	BIRCH	STAIN	M	HEMLOCK	STAIN	BI-PASS DOOR
154	4'-0"	6'-8"	1 3/8"	H.C.	BIRCH	STAIN	N	HEMLOCK	STAIN	BI-FOLD DOOR
155	5'-0"	6'-8"	1 3/8"	H.C.	BIRCH	STAIN	O	HEMLOCK	STAIN	BI-FOLD DOOR
156	6'-0"	6'-8"	1 3/8"	H.C.	BIRCH	STAIN	P	HEMLOCK	STAIN	BI-FOLD DOOR

\* ACCESSIBLE POCKET DOORS MUST STOP FULLY OPEN WITH THEIR OPERATING HANDLES FULLY EXPOSED.

WINDOW SCHEDULE									
ID	SIZE	TYPE	MFG.	COLOR	INSUL	REMARKS	HEADERS		
1	2'-0" X 1'-6"	VINYL STAT.	MILGARD	WHITE	YES	STATIONARY - FROSTED	DF#1 4x12		
2	3'-0" X 1'-0"	VINYL STAT.	MILGARD	WHITE	YES	STATIONARY - FROSTED	DF#1 4x12		
3	3'-0" X 1'-6"	VINYL STAT.	MILGARD	WHITE	YES	STATIONARY - FROSTED	DF#1 4x12		
4	3'-0" X 5'-0"	VINYL SQH.	MILGARD	WHITE	YES	SINGLE HUNG W/ SCREEN	DF#1 6x8 (SEE 5'-0" TALL WINDOW FRAMING DETAIL A25.40)		
5	4'-0" X 1'-6"	VINYL STAT.	MILGARD	WHITE	YES	STATIONARY	DF#1 4x12		
6	4'-0" X 3'-6"	VINYL SLD.	MILGARD	WHITE	YES	HORIZ. SLIDER W/ SCREEN	DF#1 4x12		
7	4'-0" X 5'-0"	VINYL SQH.	MILGARD	WHITE	YES	SINGLE HUNG W/ SCREEN	DF#1 6x8 (SEE 5'-0" TALL WINDOW FRAMING DETAIL A25.40)		
8	2'-6"	VINYL STAT.	MILGARD	WHITE	YES	STATIONARY	DF#1 4x12		
9	5'-0" X 2'-6"	VINYL SLD.	MILGARD	WHITE	YES	HORIZ. SLIDER W/ SCREEN	DF#1 4x12		
10	5'-0" X 5'-0"	VINYL SQH.	MILGARD	WHITE	YES	SINGLE HUNG W/ SCREEN	DF#1 6x8 (SEE 5'-0" TALL WINDOW FRAMING DETAIL A25.40)		
11	3'-0" X 4'-6"	CASEMENT	MILGARD	WHITE	YES	CASEMENT W/ SCREEN	DF#1 4x12		

NOTE: ALL LOWER FLOOR OPERABLE WINDOWS + HARDWARE TO COMPLY WITH O.S.S.C. 2019 CHAPTER 11 SEC. 1107.2 ON TO ICC/ANSI A117.1 THEN SEC. 1002.13. OPERABLE PARTS SHALL COMPLY WITH SEC. 309. SEE 'OPERABLE WINDOWS IN ACCESSIBLE LOCATIONS' DETAIL ON SHEET ADA-5. ALL LOWER FLOOR WINDOW HEADERS TO BE SET AT 7'-0" A.F.F. UNO.

NOTE: FOR WINDOW PLACEMENT SEE 'WINDOW PLACEMENT FOR EGRESS + FALL PROTECTION' DETAIL ON SHEET A25.40.

CONSTRUCTION TYPE V B SPRINKLED.