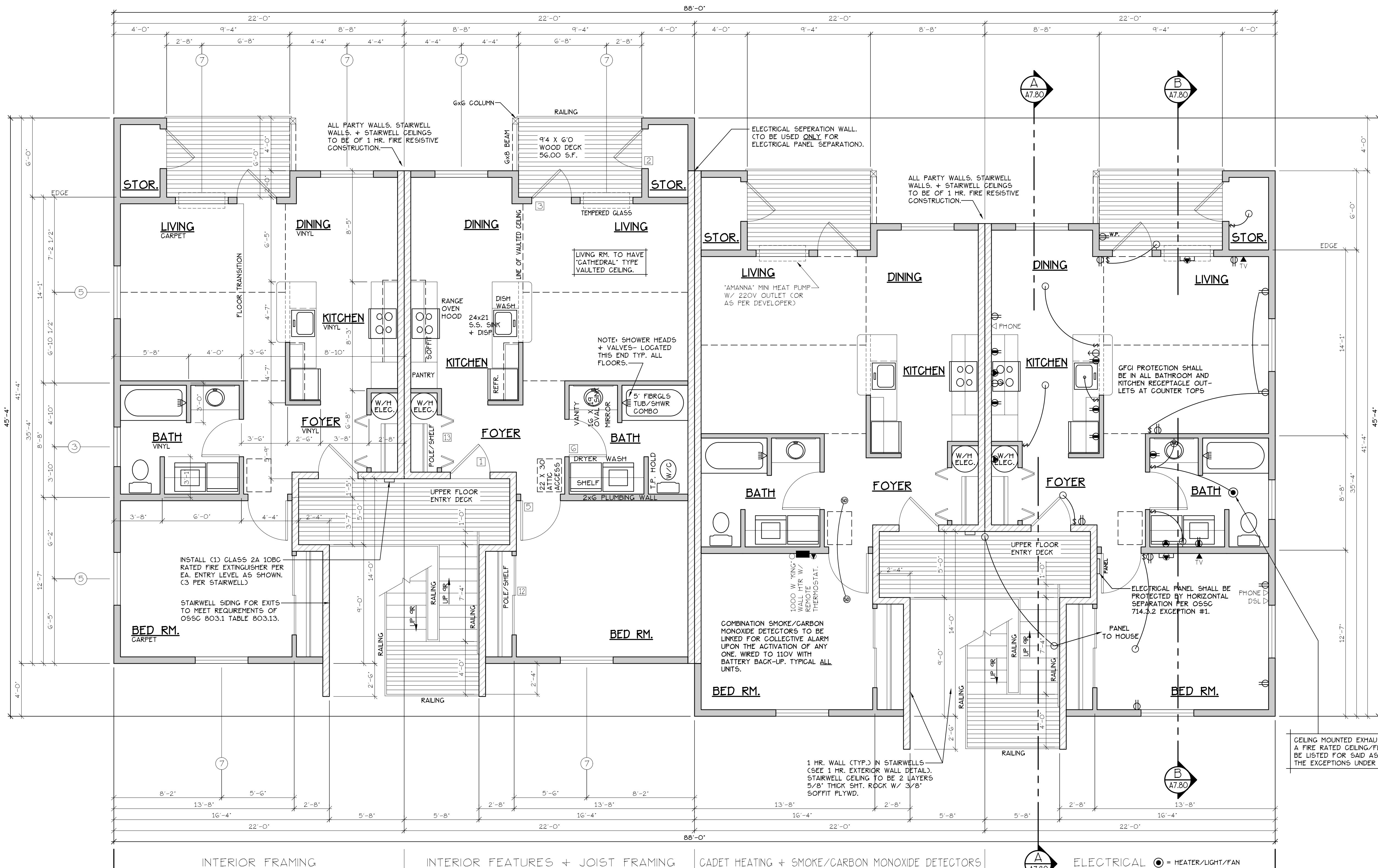


UPPER FLOOR PLAN
APARTMENT COMPLEX



UPPER FLOOR PLAN
SCALE: 1/4" = 1'-0"
"C" UNIT = 728 S.F.

TYPE C UNITS
BLD. 1+3

CONSTRUCTION TYPE V B SPRINKLED
SEE WALL DETAIL SHEETS FOR SHEETROCK APPLICATION.

NOTE: MAIN + UPPER FLOOR DOORS ARE SIZED THE SAME AS LOWER FLOOR DOORS. DOOR SIZE OPTIONS FOR MAIN + UPPER FLOORS ARE AS FOLLOWS:
BED RM. = 2'-6" DOOR
BATH RM. = 2'-4" DOOR

CEILING MOUNTED EXHAUST FANS INSTALLED WITHIN A FIRE RATED CEILING/FLOOR ASSEMBLY SHALL BE LISTED FOR SAID ASSEMBLY OR COMPLY WITH THE EXCEPTIONS UNDER O55C 714.4.1.2.

DOOR SCHEDULE									
DOORS			FRAMES			REMARKS			
ID	WIDTH	HEIGHT	THICK	TYP.	MATL.	FIN.	TYP.	MATL.	FIN.
141	3'-0"	6'-8"	1 3/4"	MTL.	GLAD	PAINT	A	METAL	PAINT
142	3'-0"	6'-8"	1 3/4"	MTL.	GLAD	PAINT	B	METAL	PAINT
143	3'-0"	6'-8"	1 3/4"	MTL.	GLAD	PAINT	C	METAL	PAINT
144	2'-6"	6'-8"	1 3/4"	MTL.	GLAD	PAINT	D	METAL	PAINT
145	3'-0"	6'-8"	1 3/8"	H.C.	BIRCH	STAIN	E	HEMLOCK	STAIN
146	2'-10"	6'-8"	1 3/8"	H.C.	BIRCH	STAIN	E	HEMLOCK	STAIN
147	2'-6"	6'-8"	1 3/8"	H.C.	BIRCH	STAIN	E	HEMLOCK	STAIN
148	2'-0"	6'-8"	1 3/8"	H.C.	BIRCH	STAIN	E	HEMLOCK	STAIN
149	2'-10"	6'-8"	1 3/8"	H.C.	BIRCH	STAIN	F	HEMLOCK	STAIN
150	2'-10"	6'-8"	1 3/8"	H.C.	BIRCH	STAIN	F	HEMLOCK	STAIN
151	4'-0"	6'-8"	1 3/8"	H.C.	BIRCH	STAIN	G	HEMLOCK	STAIN
152	6'-0"	6'-8"	1 3/8"	H.C.	BIRCH	STAIN	G	HEMLOCK	STAIN
153	4'-0"	6'-8"	1 3/8"	H.C.	BIRCH	STAIN	H	HEMLOCK	STAIN
154	5'-0"	6'-8"	1 3/8"	H.C.	BIRCH	STAIN	H	HEMLOCK	STAIN
155	6'-0"	6'-8"	1 3/8"	H.C.	BIRCH	STAIN	H	HEMLOCK	STAIN

* ACCESSIBLE POCKET DOORS MUST STOP FULLY OPEN WITH THEIR OPERATING HANDLES FULLY EXPOSED.

WINDOW SCHEDULE									
ID	SIZE	TYPE	MFG.	COLOR	NSUL	REMARKS	HEADERS		
1	2'0" X 1'6"	VNLT STAT.	MILGARD	WHITE	YES	STATIONARY - FROSTED	DF#1 4x12		
2	3'0" X 1'0"	VNLT STAT.	MILGARD	WHITE	YES	STATIONARY - FROSTED	DF#1 4x12		
3	3'0" X 1'6"	VNLT STAT.	MILGARD	WHITE	YES	STATIONARY - FROSTED	DF#1 4x12		
4	3'0" X 5'0"	VNLT SQH.	MILGARD	WHITE	YES	SINGLE HUNG W/ SCREEN	DF#1 6x8 (SEE 5'-0" TALL WINDOW FRAMING DETAIL A25.40)		
5	4'0" X 1'6"	VNLT STAT.	MILGARD	WHITE	YES	STATIONARY	DF#1 4x12		
6	4'0" X 3'6"	VNLT SLD.	MILGARD	WHITE	YES	HORIZ. SLIDER W/ SCREEN	DF#1 4x12		
7	4'0" X 5'0"	VNLT SQH.	MILGARD	WHITE	YES	SINGLE HUNG W/ SCREEN	DF#1 6x8 (SEE 5'-0" TALL WINDOW FRAMING DETAIL A25.40)		
8	5'0" X 1'6"	VNLT STAT.	MILGARD	WHITE	YES	STATIONARY	DF#1 4x12		
9	5'0" X 2'6"	VNLT SLD.	MILGARD	WHITE	YES	HORIZ. SLIDER W/ SCREEN	DF#1 4x12		
10	5'0" X 5'0"	VNLT SQH.	MILGARD	WHITE	YES	SINGLE HUNG W/ SCREEN	DF#1 6x8 (SEE 5'-0" TALL WINDOW FRAMING DETAIL A25.40)		
11	3'0" X 4'6"	CASEMENT	MILGARD	WHITE	YES	CASEMENT W/ SCREEN	DF#1 4x12		

NOTE: ALL LOWER FLOOR OPERABLE WINDOWS + HARDWARE TO COMPLY WITH O.S.S.C. 2019 CHAPTER 11 SEC. 1107.2 ON TO ICC/ANSI A117.1 THEN SEC. 1002.13. OPERABLE PARTS SHALL COMPLY WITH SEC. 309. SEE "OPERABLE WINDOWS IN ACCESSIBLE LOCATIONS" DETAIL ON SHEET ADA-5. ALL LOWER FLOOR WINDOW HEADERS TO BE SET AT 7'-0" A.F.F. U.N.O.

NOTE: FOR WINDOW PLACEMENT SEE "WINDOW PLACEMENT FOR EGRESS + FALL PROTECTION" DETAIL ON SHEET A25.40.

NOTE: ALL ACCESSIBLE DOORS SHALL BE PROVIDED WITH LEVER DOOR HARDWARE + OTHER OPERATING DEVICES IN COMPLIANCE WITH ICC/ANSI A117.1 SECTIONS 309.4. AND 404.2.G.

NOTE: MAX. U-VALUE FOR ALL WINDOWS AS PER TABLE 502.3 2014 OESG U-0.35.

NOTE: WINDOW SILLS MORE THAN 72" ABOVE FINISH GRADE SHALL BE A MINIMUM OF 36" ABOVE FINISH FLOOR SURFACE (OR) BE INSTALLED WITH WINDOW OPENING CONTROL DEVICES IN COMPLIANCE WITH THE 2019 OESG SECTIONS 1015.8.

CONSTRUCTION TYPE V B SPRINKLED.

SEE "GENERAL STRUCTURAL NOTES" ON SHEET A7.20 BEFORE BEGINNING ANY CONSTRUCTION.

GENERAL NOTES:

- ALL EXTERIOR WALLS TO BE 2 X 6 STUDS. ALL OTHER WALLS TO BE 2 X 4 STUDS UNLESS OTHERWISE NOTED.
- FIRE BLOCK CONCEALED SPACES (VERTICAL + HORIZONTAL) AS PER O55C 718.2.2 AND O55C 718.2.3.
- PRIOR TO INSTALLATION OF FIBERGLASS TUB/SHOWER + SHOWER UNITS, SHEET ROCK SHALL BE APPLIED TO STUD WALLS AS INDICATED ON PLANS.
- ALL BATH FANS TO HAVE MN. 80 CFM. RANGE HOOD EXHAUST FANS TO HAVE MN. 150 CFM.
- ELECTRIC OUTLETS IN 1 HR. WALL MAY NOT BE BACK TO BACK AND MUST BE SEPARATED BY HORIZONTAL DISTANCE OF 2'-0".
- ALL EXTERIOR FLOOD LIGHTING SHALL BE CONNECTED TO HOUSE PANELS LOCATED IN ON-SITE UTILITY ROOMS + STORAGE BLD'G'S.
- AS PER OESG HIGH-EFFICIENCY LIGHTING SYSTEMS - A MINIMUM OF 50 PERCENT OF THE LAMPS IN PERMANENTLY INSTALLED LIGHTING FIXTURES SHALL BE COMPACT OR LINEAR FLOURESCENT, OR A LIGHTING SOURCE THAT HAS A MINIMUM EFFICACY OF 40 LUMENS PER INPUT WATT.
- ALL TYPE 'A' ACCESSIBLE UNITS REQUIRE THE PATIO TO BE AT SAME LEVEL AS DWELLING UNIT.

NO CHANGES, MODIFICATIONS OR REVISIONS TO BE MADE TO THIS DOCUMENT WITHOUT THE AUTHORIZATION OF THE DESIGN ENGINEER.
DIMENSIONS & NOTES TAKE PRECEDENCE OVER GRAPHICAL REPRESENTATION.

Design: P.L.M. AS 50418
Drawn: G.L.D.
Checked: M.D.G.
Date: Jun-21
Scale: AS SHOWN
JOB # 7192

REGISTERED PROFESSIONAL ENGINEER
MARK D. SNEYD
JULY 14 1978
RENEW DATE: JUN 28 2023

A5.50