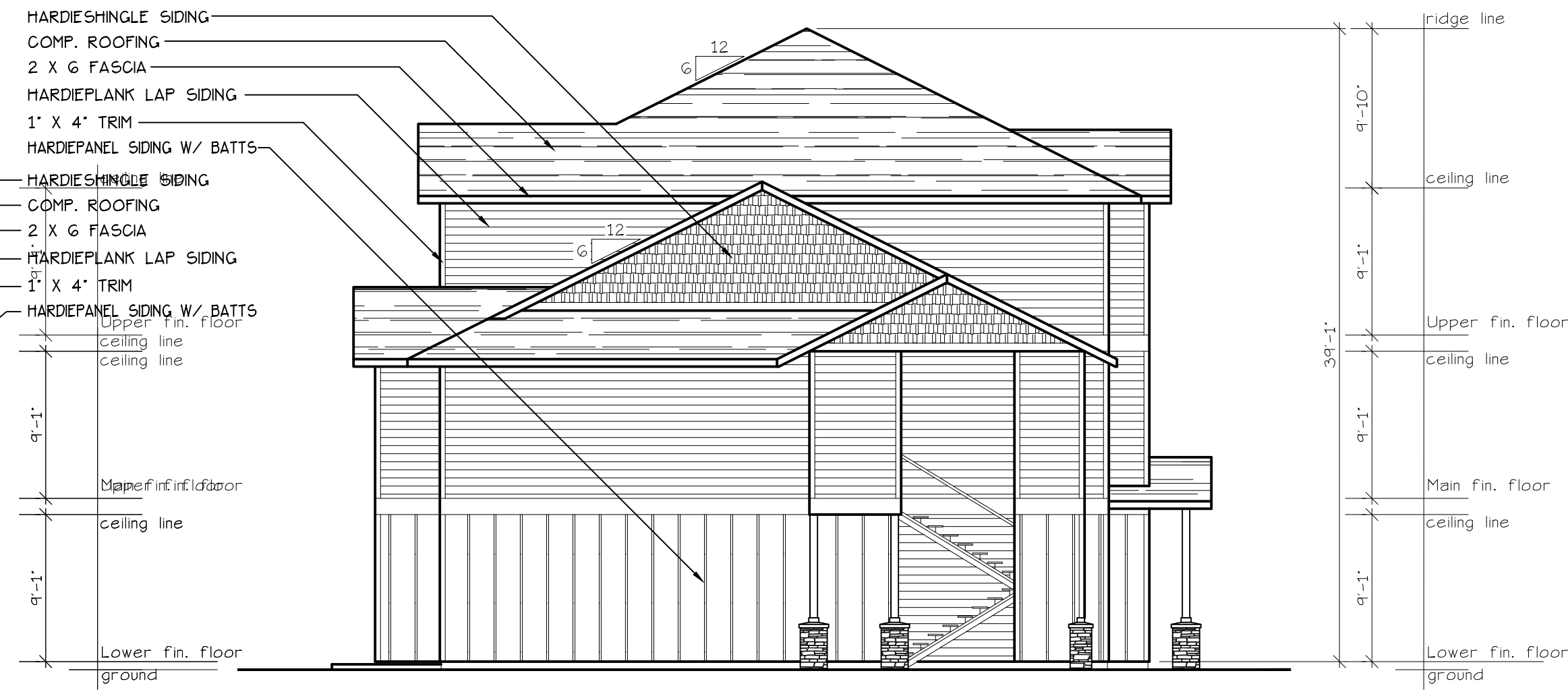




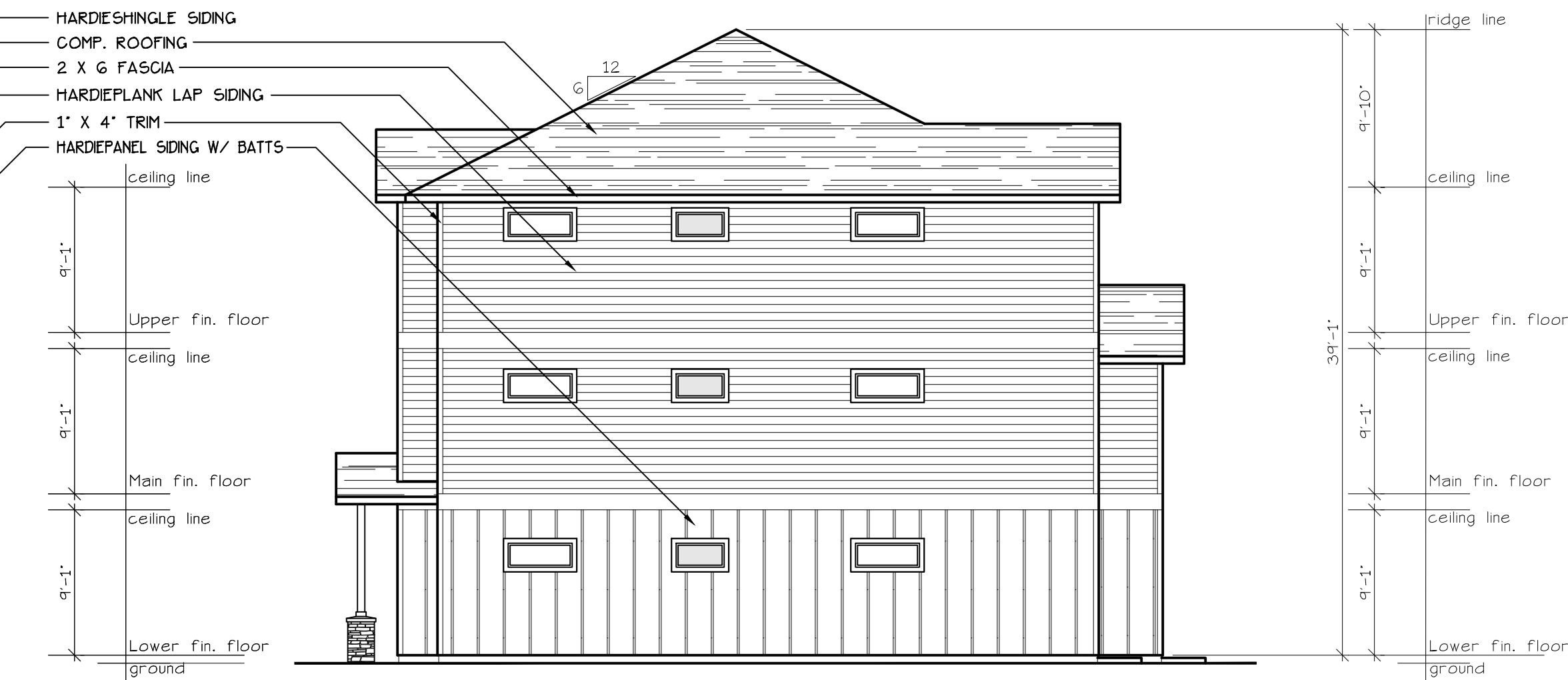
**SOUTH ELEVATION** (TYPE C UNITS)  
SCALE: 1/8" = 1'-0"  
**BLD. 17**



**EAST ELEVATION** (TYPE C UNITS)  
SCALE: 1/8" = 1'-0"  
**BLD. 17**



**NORTH ELEVATION** (TYPE C UNITS)  
SCALE: 1/8" = 1'-0"  
**BLD. 17**  
EXHAUST VENT 3'-0" CLEAR OF OPERABLE WINDOW AREA TYP.



**WEST ELEVATION** (TYPE C UNITS)  
SCALE: 1/8" = 1'-0"  
**BLD. 17**

- HARDIESHINGLE SIDING
- COMP. ROOFING
- 2 X 6 FASCIA
- HARDIEPLANK LAP SIDING
- 1' X 4" TRIM
- HARDIEPANEL SIDING W/ BATTS
- HARDIESHINGLE SIDING
- COMP. ROOFING
- 2 X 6 FASCIA
- HARDIEPLANK LAP SIDING
- 1' X 4" TRIM
- HARDIEPANEL SIDING W/ BATTS

**BUILDING ELEVATIONS**

**COBURN APARTMENT COMPLEX**

NO CHANGES, MODIFICATIONS OR REVISIONS TO BE MADE TO THIS DRAWING WITHOUT THE AUTHORIZATION FROM THE DESIGN ENGINEER.  
DIMENSIONS & NOTES TAKE PRECEDENCE OVER GRAPHICAL REPRESENTATION.

DESIGN: P.L.M.  
DRAWN: G.L.D.  
CHECKED: M.D.G.  
DATE: JUN-21  
SCALE: AS SHOWN

