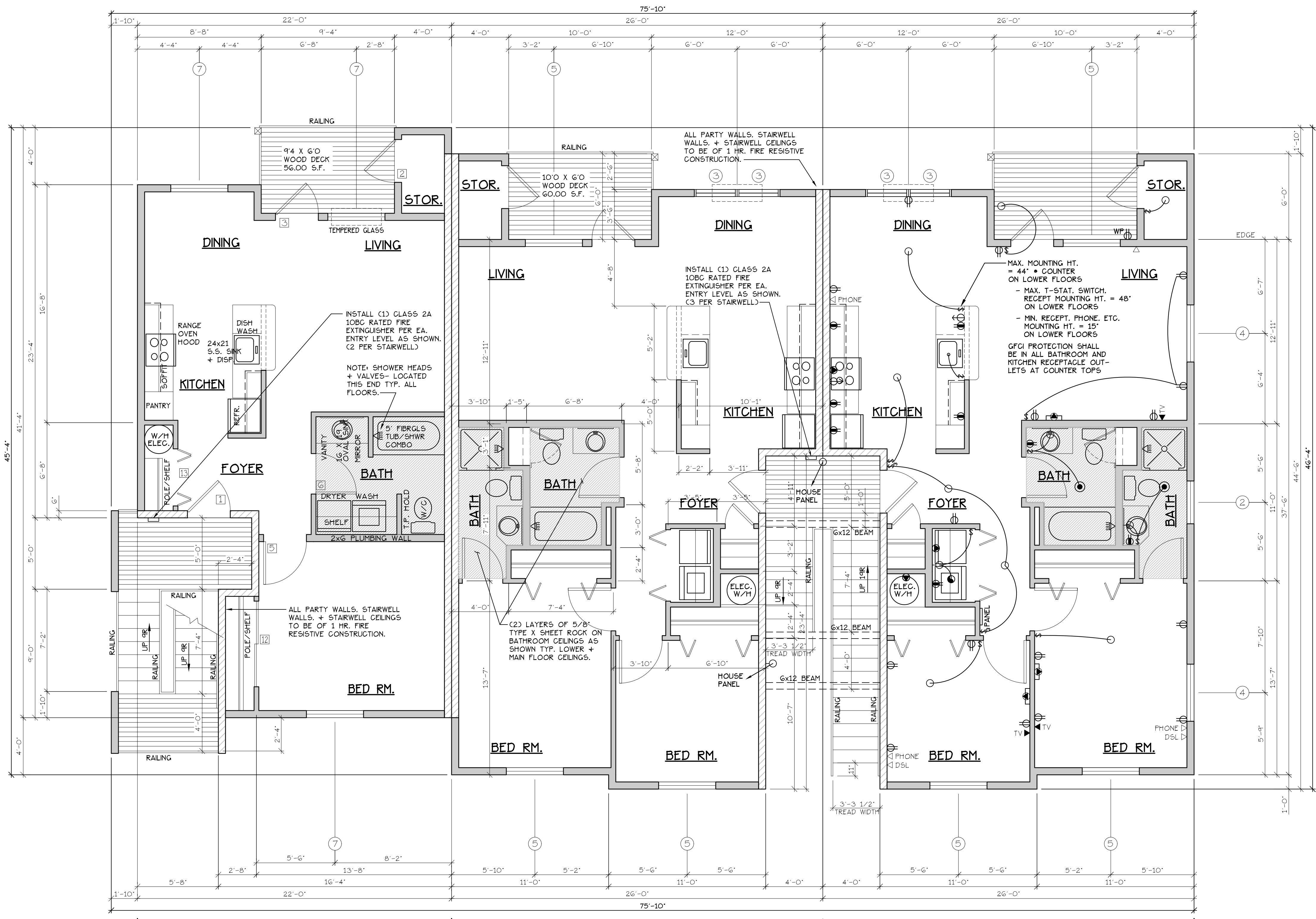


MAIN FLOOR PLAN

COBURN APARTMENT COMPLEX



INTERIOR FEATURES | INTERIOR FRAMING | ELECTRICAL ● = HEATER/LIGHT/FAN

TYPE C UNITS

TYPE A UNITS

MAIN FLOOR PLAN
SCALE: 1/4" = 1'-0"
'C' UNIT = 728 S.F.

BLD. 18

CONSTRUCTION TYPE V B SPRINKLED
SEE WALL DETAIL SHEETS FOR SHEETROCK APPLICATION.

NOTE: MAIN + UPPER FLOOR DOORS ARE SIZED THE SAME AS LOWER FLOOR DOORS. DOOR SIZE OPTIONS FOR MAIN + UPPER FLOORS ARE AS FOLLOWS:
BED RM. = 2'-6" DOOR
BATH RM. = 2'-4" DOOR

SEE 'GENERAL STRUCTURAL NOTES' ON SHEET A7.20 BEFORE BEGINNING ANY CONSTRUCTION.

- GENERAL NOTES:**
- ALL EXTERIOR WALLS TO BE 2 X 4 STUDS. ALL OTHER WALLS TO BE 2 X 4 STUDS UNLESS OTHERWISE NOTED.
 - FIRE BLOCK CONCEALED SPACES (VERTICAL + HORIZONTAL) AS PER O55C 718.2.2 AND O55C 718.2.3.
 - PRIOR TO INSTALLATION OF FIBERGLASS TUB/SOWER + SHOWER UNITS, SHEET ROCK SHALL BE APPLIED TO STUD WALLS AS INDICATED ON PLANS.
 - ALL BATH FANS TO HAVE MIN. 80 CFM. RANGE HOOD EXHAUST FANS TO HAVE MIN. 150 CFM.
 - ELECTRIC OUTLETS IN 1 HR. WALL MAY NOT BE BACK TO BACK AND MUST BE SEPARATED BY HORIZONTAL DISTANCE OF 2'-0".
 - ALL EXTERIOR FLOOD LIGHTING SHALL BE CONNECTED TO HOUSE PANELS LOCATED IN ON-SITE UTILITY ROOMS + STORAGE BLD'GS.
 - AS PER O55C HIGH-EFFICIENCY LIGHTING SYSTEMS - A MINIMUM OF 50 PERCENT OF THE LAMPS IN PERMANENTLY INSTALLED LIGHTING FIXTURES SHALL BE COMPACT OR LINEAR FLUORESCENT, OR A LIGHTING SOURCE THAT HAS A MINIMUM EFFICACY OF 40 LUMENS PER INPUT WATT.
 - ALL 'TYPE A' ACCESSIBLE UNITS REQUIRE THE PATIO TO BE AT SAME LEVEL AS DWELLING UNIT.

DOOR SCHEDULE										
DOORS					FRAMES					REMARKS
ID	WIDTH	HEIGHT	THICK	TYP.	MATL.	FIN.	TYP.	MATL.	FIN.	
141	3'-0"	6'-8"	1 3/4"	MTL.	GLAD	PAINT	A	METAL	PAINT	6 PANEL 60 MIN RATED ASSY. W/ THRESHOLD, WEATHERSTRIP, CLOSURES, FULL LITE, TEMP. GLASS, LOCK, WEATHERSTRIP AND INTERIOR BLINDS.
142	3'-0"	6'-8"	1 3/4"	MTL.	GLAD	PAINT	B	METAL	PAINT	W/ THRESHOLD, WEATHERSTRIP AND KEYS LOCK
143	2'-6"	6'-8"	1 3/4"	MTL.	GLAD	PAINT	D	METAL	PAINT	W/ THRESHOLD, WEATHERSTRIP AND KEYS LOCK
144	3'-0"	6'-8"	1 3/4"	H.C.	BIRCH	STAIN	E	HEMLOCK	STAIN	
145	2'-10"	6'-8"	1 3/4"	H.C.	BIRCH	STAIN	E	HEMLOCK	STAIN	
146	2'-6"	6'-8"	1 3/4"	H.C.	BIRCH	STAIN	E	HEMLOCK	STAIN	
147	2'-6"	6'-8"	1 3/4"	H.C.	BIRCH	STAIN	E	HEMLOCK	STAIN	
148	2'-0"	6'-8"	1 3/4"	H.C.	BIRCH	STAIN	F	HEMLOCK	STAIN	POCKET DOOR
149	2'-10"	6'-8"	1 3/4"	H.C.	BIRCH	STAIN	F	HEMLOCK	STAIN	POCKET DOOR
150	4'-0"	6'-8"	1 3/4"	H.C.	BIRCH	STAIN	G	HEMLOCK	STAIN	BI-PASS DOOR
151	5'-8"	6'-8"	1 3/4"	H.C.	BIRCH	STAIN	G	HEMLOCK	STAIN	BI-PASS DOOR
152	6'-0"	6'-8"	1 3/4"	H.C.	BIRCH	STAIN	G	HEMLOCK	STAIN	BI-PASS DOOR
153	4'-0"	6'-8"	1 3/4"	H.C.	BIRCH	STAIN	H	HEMLOCK	STAIN	BI-FOLD DOOR
154	5'-0"	6'-8"	1 3/4"	H.C.	BIRCH	STAIN	H	HEMLOCK	STAIN	BI-FOLD DOOR
155	6'-0"	6'-8"	1 3/4"	H.C.	BIRCH	STAIN	H	HEMLOCK	STAIN	BI-FOLD DOOR

WINDOW SCHEDULE									
ID	SIZE	TYPE	MFG.	COLOR	NSUL	REMARKS	HEADERS		
1	2'-0" X 1'-6"	VINYL STAT.	MILGARD	WHITE	YES	STATIONARY - FROSTED	DF#1 4x12		
2	3'-0" X 1'-0"	VINYL STAT.	MILGARD	WHITE	YES	STATIONARY - FROSTED	DF#1 4x12		
3	3'-0" X 1'-0"	VINYL STAT.	MILGARD	WHITE	YES	STATIONARY - FROSTED	DF#1 4x12		
4	3'-0" X 5'-0"	VINYL SQH.	MILGARD	WHITE	YES	SINGLE HUNG W/ SCREEN	DF#1 6x8 (SEE 5'-0" TALL WINDOW FRAMING DETAIL A25.40)		
5	4'-0" X 1'-6"	VINYL STAT.	MILGARD	WHITE	YES	STATIONARY	DF#1 4x12		
6	4'-0" X 3'-6"	VINYL SLD.	MILGARD	WHITE	YES	HORIZ. SLIDER W/ SCREEN	DF#1 4x12		
7	4'-0" X 5'-0"	VINYL SQH.	MILGARD	WHITE	YES	SINGLE HUNG W/ SCREEN	DF#1 6x8 (SEE 5'-0" TALL WINDOW FRAMING DETAIL A25.40)		
8	5'-0" X 1'-6"	VINYL STAT.	MILGARD	WHITE	YES	STATIONARY	DF#1 4x12		
9	5'-0" X 2'-6"	VINYL SLD.	MILGARD	WHITE	YES	HORIZ. SLIDER W/ SCREEN	DF#1 4x12		
10	5'-0" X 5'-0"	VINYL SQH.	MILGARD	WHITE	YES	SINGLE HUNG W/ SCREEN	DF#1 6x8 (SEE 5'-0" TALL WINDOW FRAMING DETAIL A25.40)		
11	3'-0" X 4'-6"	CASEMENT	MILGARD	WHITE	YES	CASEMENT W/ SCREEN	DF#1 4x12		

NOTE: ALL ACCESSIBLE DOORS SHALL BE PROVIDED WITH LEVER DOOR HARDWARE + OTHER OPERATING DEVICES IN COMPLIANCE WITH ICC/ANSI A117.1 SECTIONS 309.4, AND 404.2.G.

NOTE: MAX. U-VALUE FOR ALL WINDOWS AS PER TABLE 502.3 2014 O55C U-0.35.

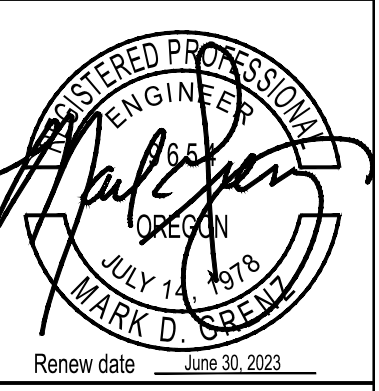
NOTE: WINDOW SILLS MORE THAN 72" ABOVE FINISH GRADE SHALL BE A MINIMUM OF 3G" ABOVE FINISH FLOOR SURFACE (COR) BE INSTALLED WITH WINDOW OPENING CONTROL DEVICES IN COMPLIANCE WITH THE 2019 O55C SECTIONS 1015.8.

NOTE: FOR WINDOW PLACEMENT SEE 'WINDOW PLACEMENT FOR EGRESS + FALL PROTECTION' DETAIL ON SHEET A25.40.

CONSTRUCTION TYPE V B SPRINKLED.

NO CHANGES, MODIFICATIONS OR REVISIONS TO BE MADE TO THIS DOCUMENT WITHOUT THE WRITTEN AUTHORIZATION FROM THE DESIGN ENGINEER.
DIMENSIONS & NOTES TAKE PRECEDENCE OVER GRAPHICAL REPRESENTATION.

Design: P.L.M.
Drawn: G.L.D.
Checked: M.D.G.
Date: Jul-21
Scale: AS SHOWN
JOB # 7192



Renew date: June 30, 2023
A2.41