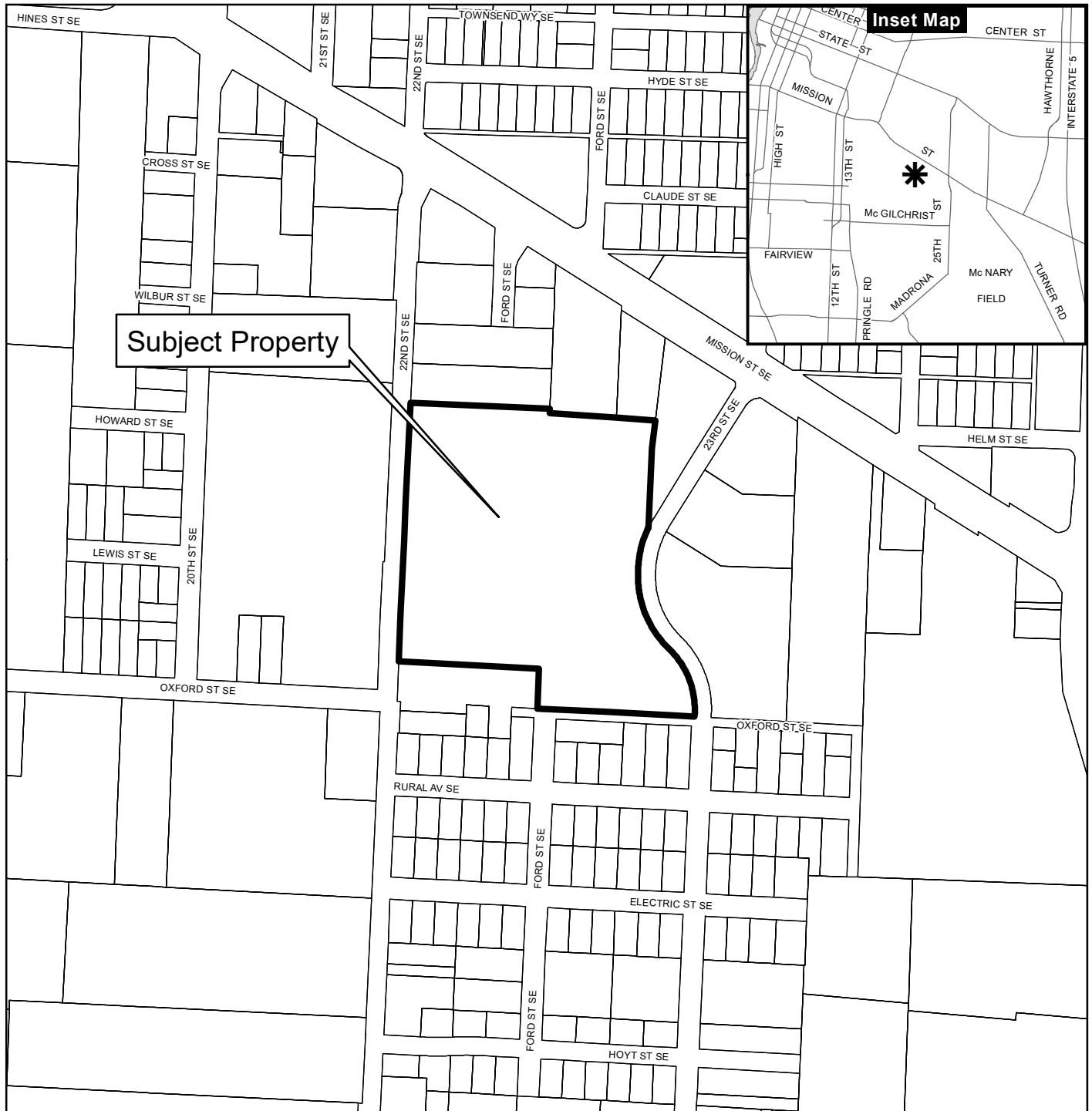


# Vicinity Map

## 1500 Block of 23rd Street SE



### Legend

- Taxlots
- Urban Growth Boundary
- City Limits
- Outside Salem City Limits
- Historic District
- Schools

- Parks

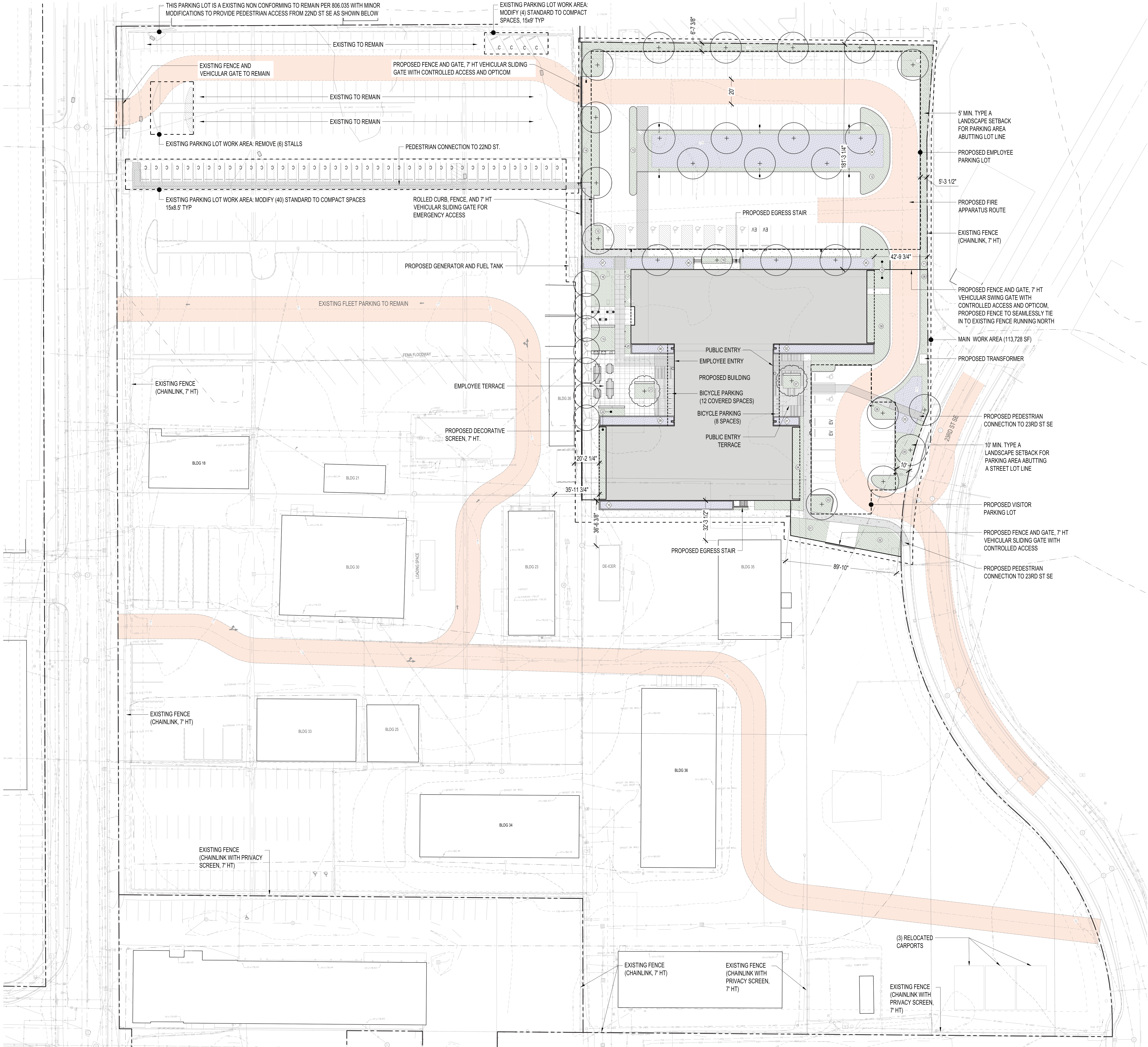
**CITY OF Salem**  
AT YOUR SERVICE  
Community Development Dept.

This product is provided as is, without warranty. In no event is the City of Salem liable for damages from the use of this product. This product is subject to license and copyright limitations and further distribution or resale is prohibited.

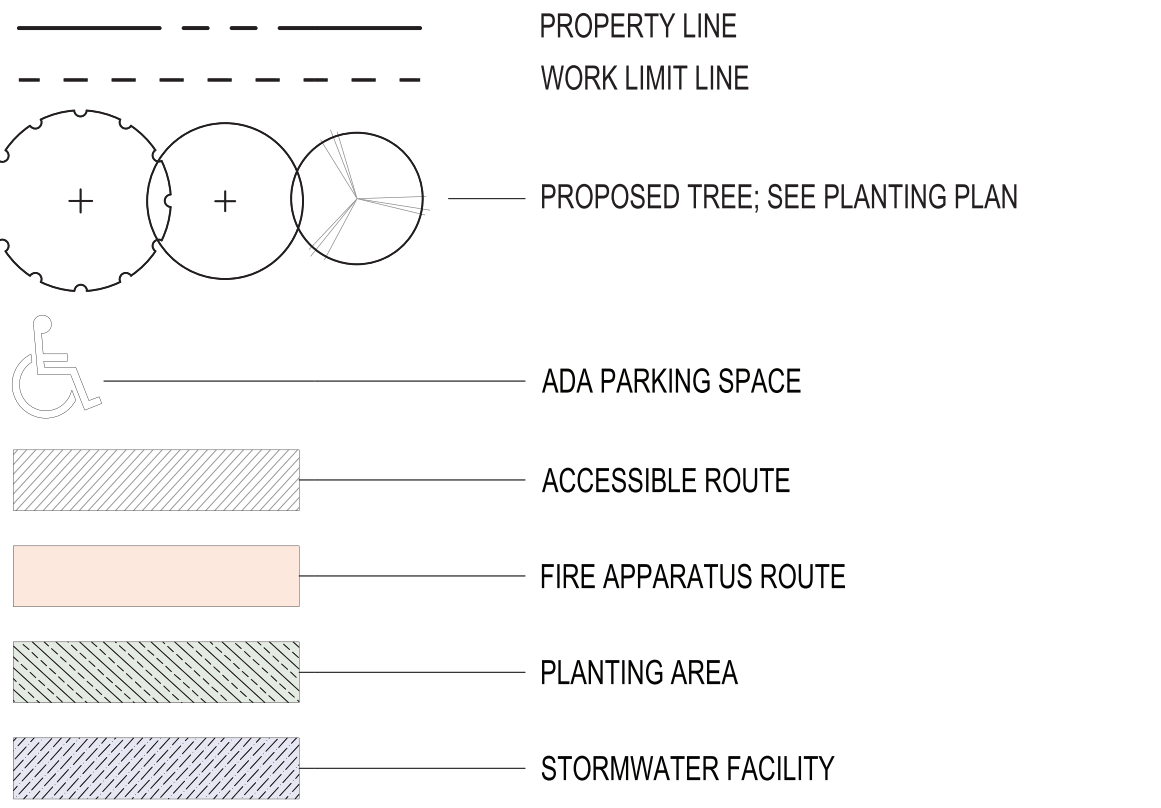
0 100 200 400 Feet







LANDSCAPE LEGEND



TOTAL SITE AREA

20.9 ACRES  
MAIN WORK AREA: 113,728 SF

LANDSCAPE AREA REQUIREMENTS

**VISITOR LOT:**  
AREA: 7,215 SF  
(INCLUDES PARKING SPACES, AISLES, PLANTING ISLANDS, CORNER AREAS AND CURBED AREAS)  
REQUIRED LANDSCAPE AREA (5%): 361 SF  
PROVIDED LANDSCAPE AREA: 701 SF

**EMPLOYEE LOT:**  
IMPERVIOUS AREA: 42,343 SF  
(INCLUDES PARKING SPACES, AISLES, PLANTING ISLANDS, CORNER AREAS AND CURBED AREAS)  
REQUIRED LANDSCAPE AREA (5%): 2,117 SF  
PROVIDED LANDSCAPE AREA: 8,622 SF

**STORMWATER:**  
INTRODUCED IMPERVIOUS AREA: 79,707  
TOTAL STORMWATER FACILITY AREA: 9,224 SF (11.6% OF INTRODUCED IMPERVIOUS AREA)

PARKING BREAKDOWN

**VISITOR LOT:** 15 SPACES INCLUDING:  
2 ADA  
2 E.V.  
8 SHORT TERM BICYCLE

**EMPLOYEE LOT:** 79 SPACES INCLUDING:  
7 ADA  
2 E.V.  
20 LIGHT VEHICLE (10x20)  
12 COVERED LONG TERM BICYCLE

**EXISTING TO REMAIN WITHIN EAST PROPERTY:** 293 SPACES INCLUDING:  
144 STANDARD  
105 FLEET

**LOADING:** 1 SPACE

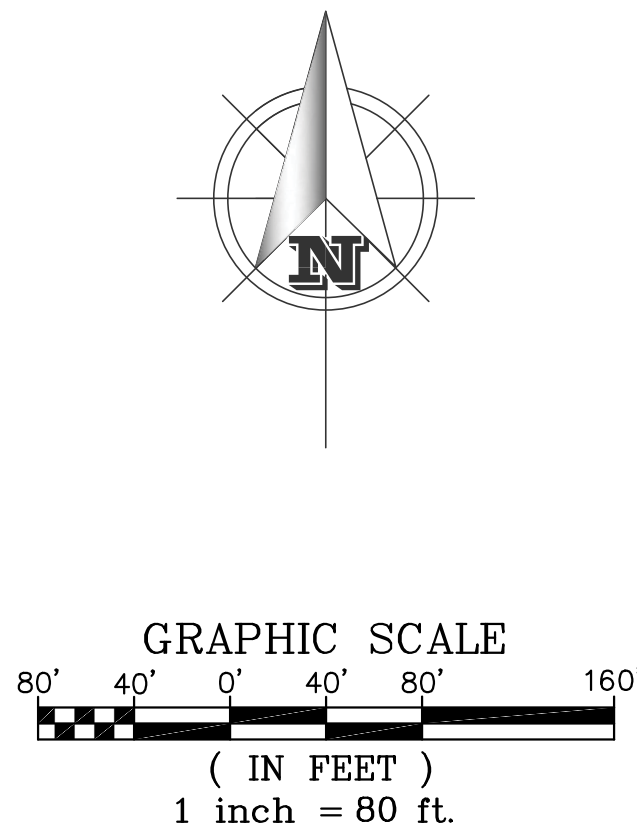
PLANTING AREA KEY

STANDARD PLANTING AREAS 15,859 SF TOTAL (13.9% OF MAIN WORK AREA)		STORMWATER PLANTING AREAS 9,224 SF TOTAL (8.1% OF MAIN WORK AREA)	
01 476 SF	13 364 SF	01 128 SF	06 440 SF
02 685 SF	14 966 SF	02 534 SF	07 201 SF
03 240 SF	15 174 SF	03 814 SF	08 225 SF
04 857 SF	16 633 SF	04 4,942 SF	09 394 SF
05 816 SF	17 277 SF	05 871 SF	10 675 SF
06 190 SF	18 127 SF		
07 147 SF	19 363 SF		
08 788 SF	20 115 SF		
09 1,389 SF	21 192 SF		
10 1,036 SF	22 503 SF		
11 3,567 SF			
12 1,954 SF			

**COMBINED PLANTING AREA:**  
26,589 SF TOTAL (22.1% OF MAIN WORK AREA)



TOPOGRAPHIC SURVEY



DISCLAIMER: UTILITIES DEPICTED ARE BASED ON EVIDENCE FOUND IN THE FIELD, MUNICIPALITY AND/OR OTHER GOVERNMENT ENTITY AS-BUILT PLANS, CONTRACTOR PLANS AND OTHER DOCUMENTS OF RECORD. BARKER SURVEYING ASSUMES NO RESPONSIBILITY FOR UTILITIES THAT ARE NO LONGER IN USE, INSTALLED AFTER THE DATE OF ACTUAL SURVEY, NOT IDENTIFIED OR NOT LOCATED. THIS INCLUDES UTILITIES UPON PUBLIC OR PRIVATE PROPERTY.

SPECIFIC UTILITY POSITIONS INDICATED ON THE GROUND SURFACE PROVIDED BY LOCATION SERVICES MAY VARY DUE TO UNDERGROUND DETECTION CAPABILITIES.

BENCHMARK UTILIZED:  
CITY OF SALEM # 2100  
ELEV: 178.75' NGVD 29  
BRASS DISK IN CONC POST,  
W. SIDE OF 22ND ST WITHIN CITY SHOPS AREA,  
APPROXIMATELY 250' N. OF OXFORD ST.,  
12' S. & 16' E. FROM THE N.E. CORNER OF THE BUS WASHING BUILDING,  
1' W. OF N-S CHAIN LINK FENCE.



SHEET LAYOUTS  
SCALE: 1" = 80'



1% ANNUAL CHANCE  
(100-YEAR) FLOODPLAIN

1% ANNUAL CHANCE  
(100-YEAR) FLOODWAY

ABBREVIATIONS	
ASPH	ASPHALT
AD	AREA DRAIN
ASSY	ASSEMBLY
BLDG, BLD	BUILDING
BW	BOTTOM OF WALL
CATV	CABLE TELEVISION
CB	CATCH BASIN
CO	CLEAN-OUT
CONC	CONCRETE
CL	CENTERLINE
DIP	DUCTILE IRON PIPE
EG	EDGE OF GRAVEL
EOP, EP	EDGE OF PAVEMENT
ELEV	ELEVATION
EX, EXIST	EXISTING
FDC	FIRE DEPT. CONNECTOR
FT	FEET
FF	FINISH FLOOR
FG	FINISH GRADE
PH	PHONE
FI	FIRE HYDRANT
FM	FIELD INLET
FM	FORCE MAIN
GRAV	GRAVEL
GM	GAS METER
GP	GATE POST
GS	GROUND SHOT
GV	GAS VALVE
HC	HANDICAP
HDPE	HIGH-DENSITY POLYETHYLENE
HYD	HYDRANT
IR	IRON ROD
IP	IRON PIPE
IRR	IRRIGATION
IE	INVERT ELEVATION
JB	JUNCTION BOX
LP	LIGHT POLE
M	METER, MAIN
MB	MAILBOX
MH	MANHOLE
OH	OVER-HEAD
P/L, P	PROPERTY LINE
PP	POWER POLE
PVC	POLYVINYL CHLORIDE
PWR	POWER
R, RAD	RADIUS
ROW, R/W	RIGHT-OF-WAY
SS	SANITARY SEWER
SD	STORM DRAIN
SVC	SERVICE
SWK, S/W	SIDEWALK
TC	TOP OF CURB
TEL	TELEPHONE
TR	TRANSFORMER
TS	TRAFFIC SIGNAL
TYP	TYPICAL
UG, U/G	UNDER GROUND
UTIL	UTILITY
VG	VALLEY GUTTER
VLT	VAULT
W	WALL
WM	WATER METER
WLM	WETLANDS MARKER
YPC	YELLOW PLASTIC CAP

SYMBOLS	
AD	AREA DRAIN
CB or CB	CATCH BASIN
CO	CLEANOUT
FI	FIRE HYDRANT
GV	GAS VALVE
WV	WATER VALVE
GP	GAS/POWER/WATER METER
DSO	DOWN SPOUT
MT	MANHOLE TELEPHONE
MSD	MANHOLE STORM DRAIN
MS	MANHOLE SANITARY SEWER
SP	SIGN POST
PEO	PEDESTAL
MB	MAIL BOX
IV	IRRIGATION VALVE
LP	LIGHT POLE
UP	UTILITY/POWER POLES
TP	TEST PIT
MF	MONUMENT FOUND
TREE	TREE
TREES - *TREE NAME* DIAMETER (INCHES)/DRIP RADIUS (FEET) NOTE: DIAMETER MEASURED AT BREAST HEIGHT	

LINE TYPES	
CATV LINE	CATV
COMMUNICATION LINE	COM
EASEMENT LINE	EASEMENT
FENCE LINE	FENCE
FIBER OPTIC LINE	FOC
GAS LINE	GAS
EDGE OF GRAVEL LINE	EG
OVERHEAD LINE	OH
PHONE LINE	PH
POWER LINE	ELEC
SANITARY SEWER LINE	SS
STORM DRAIN LINE	SD
WATER LINE	W

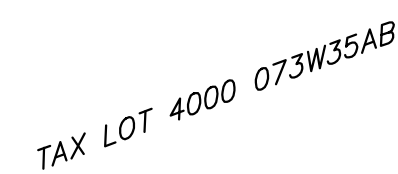
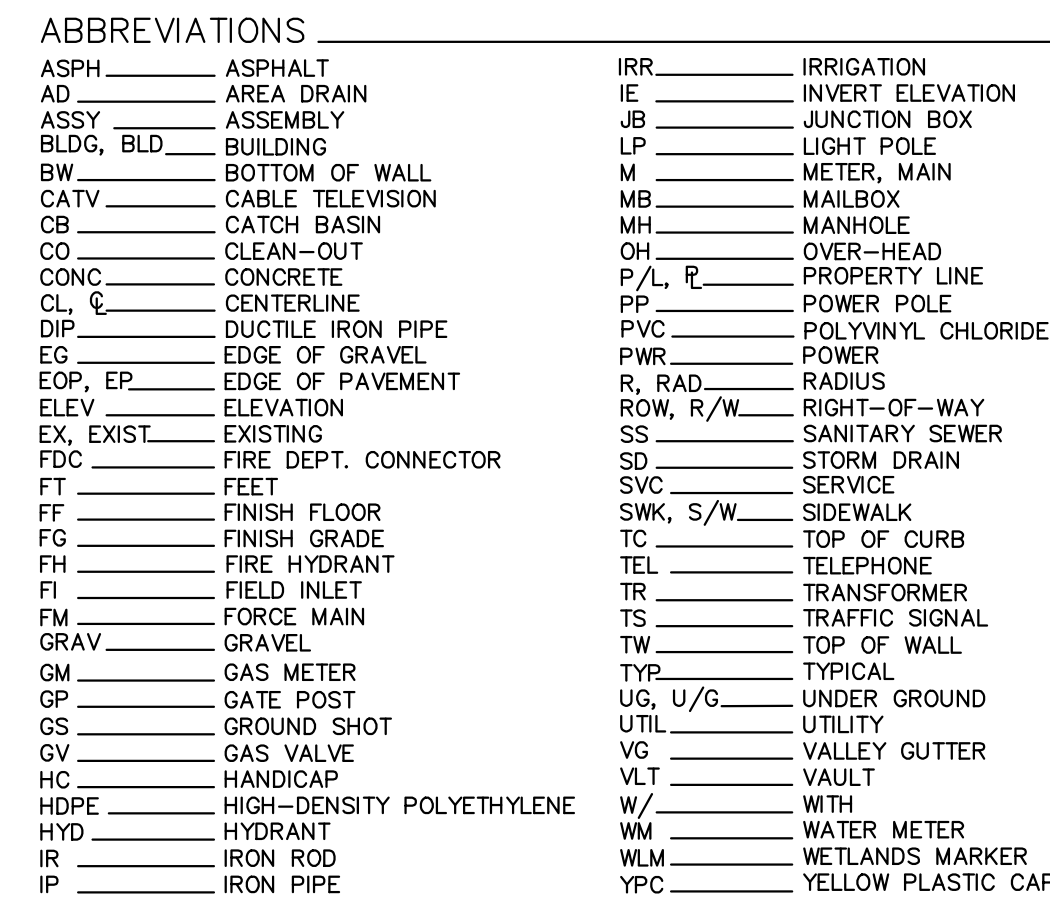
REGISTERED  
PROFESSIONAL  
LAND SURVEYOR  
*Gregory L. Wilson*  
O R B G O N  
JULY 19, 1994  
GREGORY L. WILSON  
2887  
EXPIRES: 6/30/2022

UPDATE - NW PARKING LOT 6/01/2021	
SURVEY FOR	CITY OF SALEM
LOCATION:	22ND ST - SALEM SHOPS
NE 1/4 SEC 35 T7S, R3W, W.M.	CITY OF SALEM MARION COUNTY, OREGON
SCALE: 1"=80'	BARKER SURVEYING 3657 KASHMIR WAY SE SALEM, OREGON 97317 PHONE (503) 588-8800 FAX (503) 563-2469 EMAIL: INFO@BARKERWILSON.COM
DATE: 3/12/2021	SHEET 1 OF 6
DRAWN BY: R.J.C.	JOB NUMBER: 41780

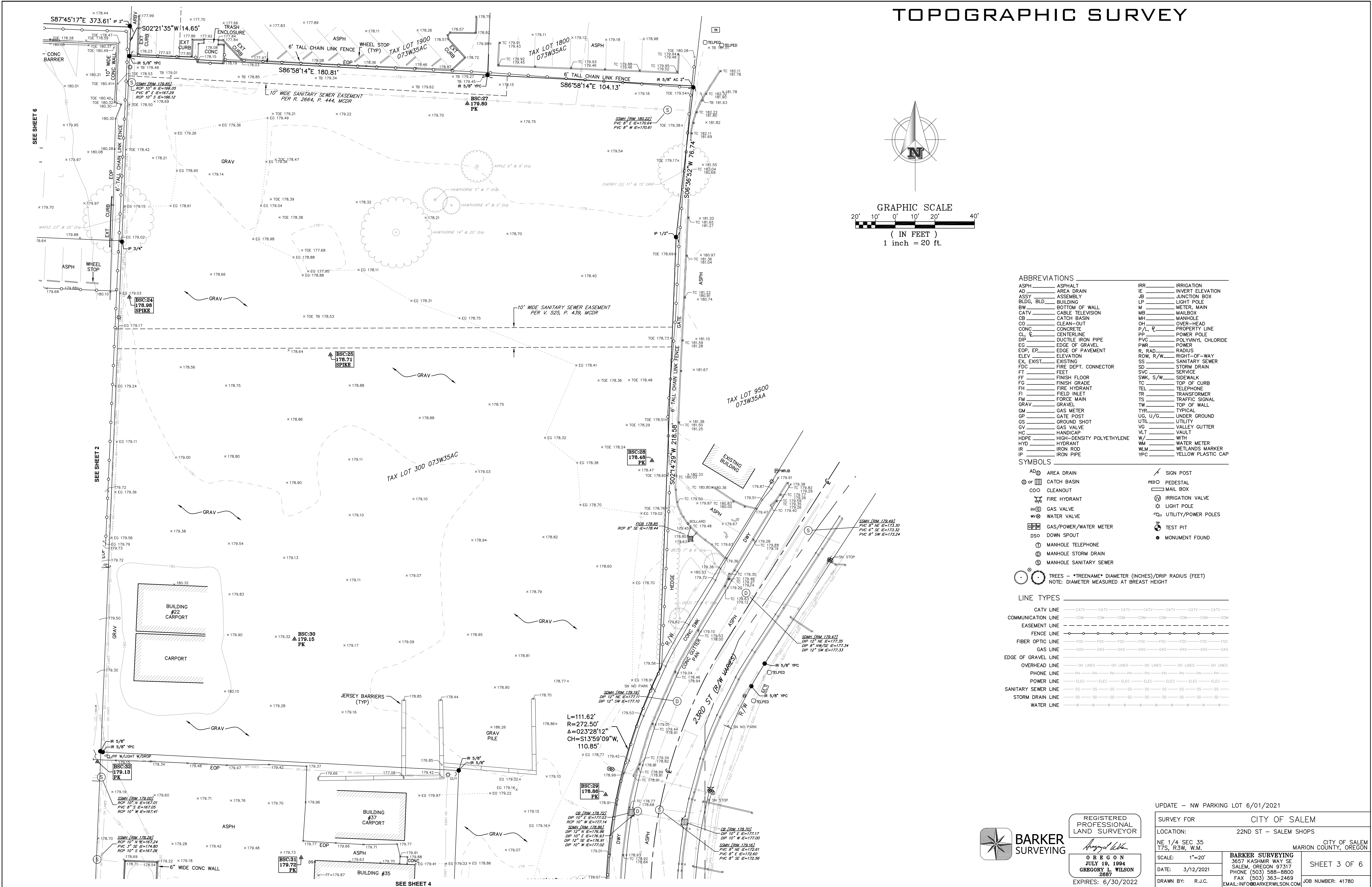




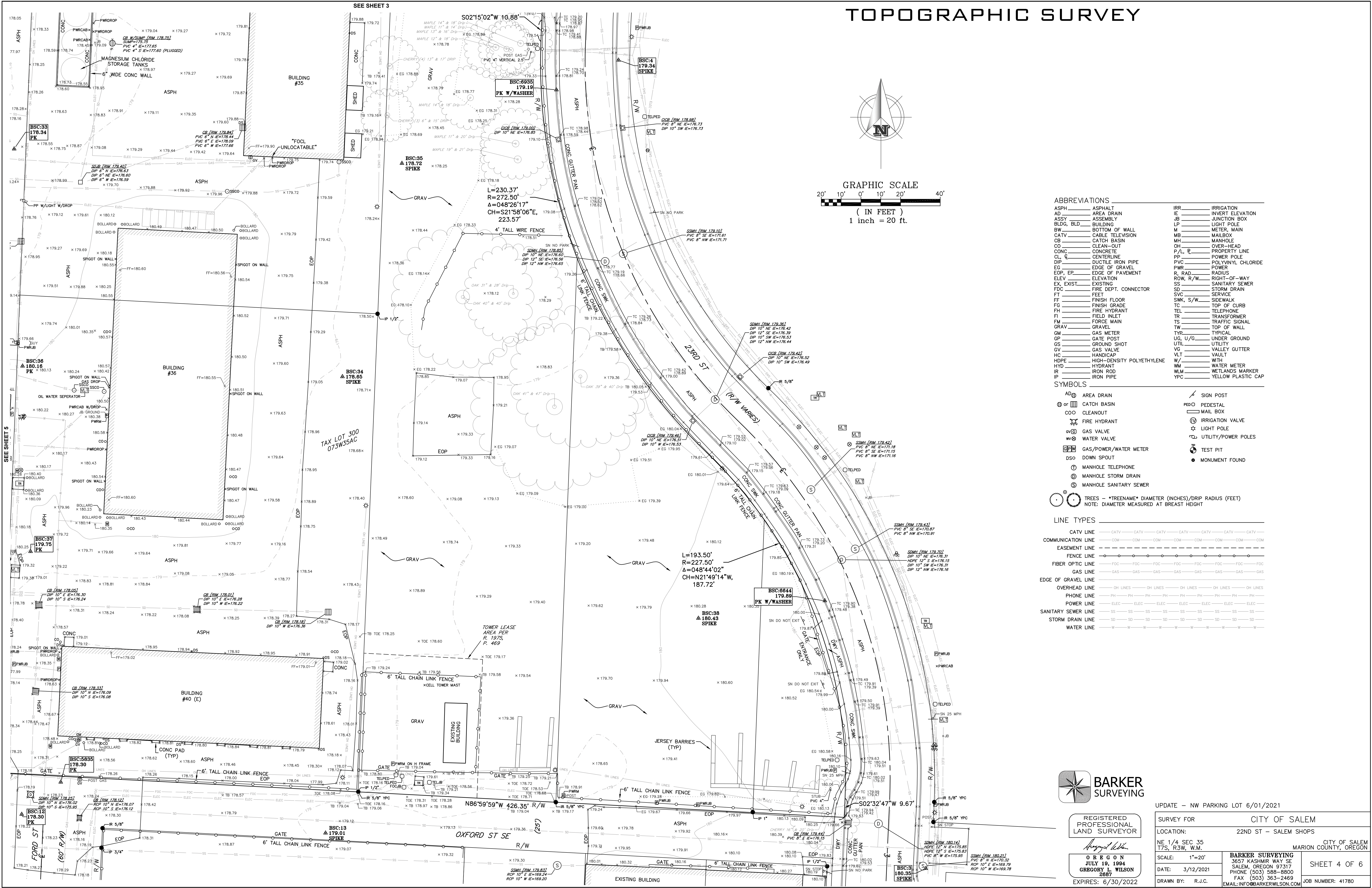
**BARKER**  
SURVEYING





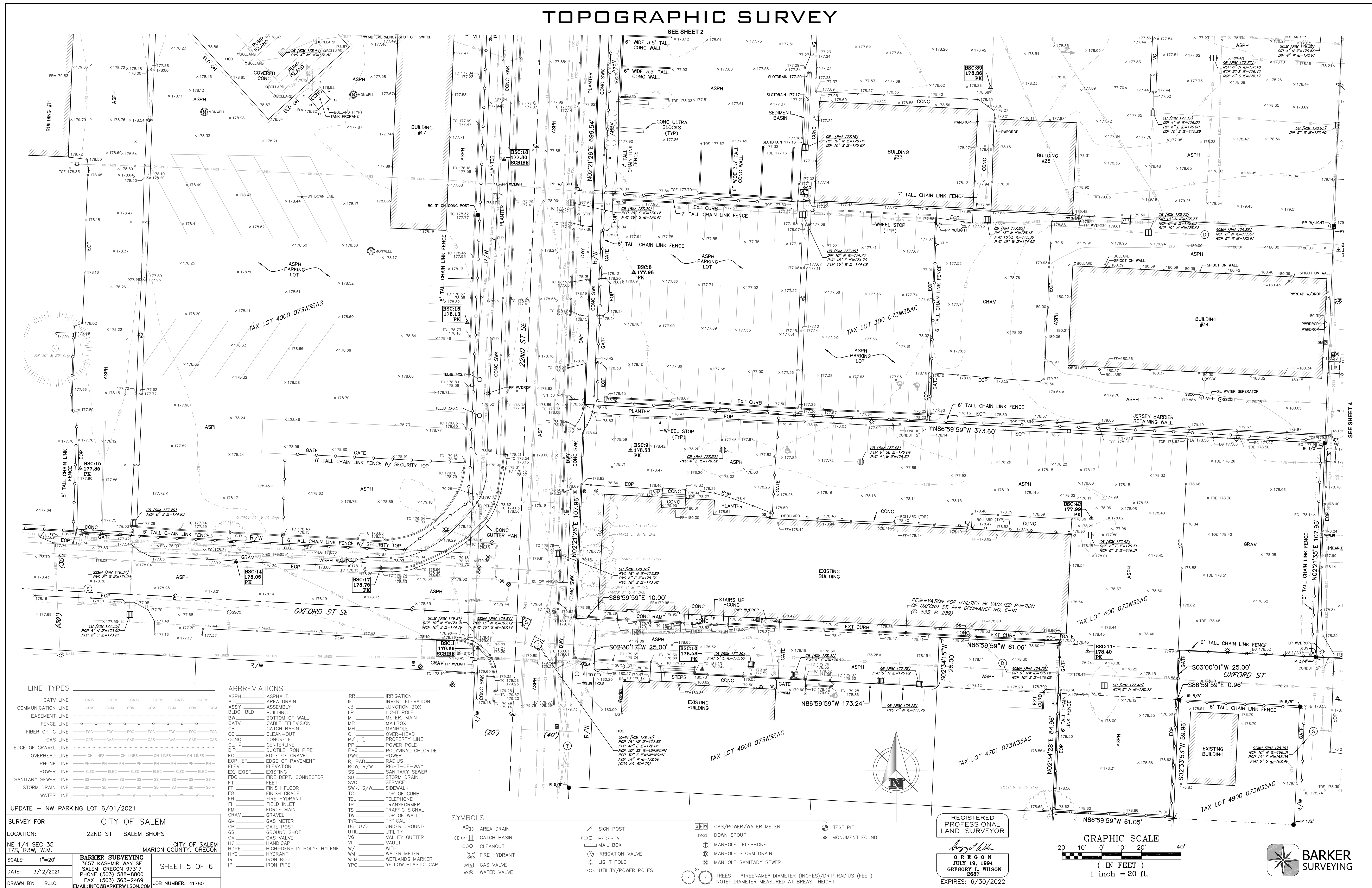








# TOPOGRAPHIC SURVEY





SURVEY FOR

CITY OF SALEM

LOCATION:

22ND ST - SALEM SHOPS

NE 1/4 SEC 35  
T7S, R3W, W.M.

CITY OF SALEM  
MARION COUNTY, OREGON

SCALE:

1"=20'

DATE:

3/12/2021

DRAWN BY:

R.J.C.

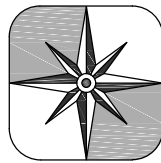
BARKER SURVEYING

3657 KASHMIR WAY SE  
SALEM, OREGON 97317  
PHONE (503) 588-8800  
FAX (503) 563-2469  
EMAIL: INFO@BARKERWILSON.COM

SHEET 6 OF 6

JOB NUMBER: 41780

REGISTERED  
PROFESSIONAL  
LAND SURVEYOR

BARKER  
SURVEYING

O R G O N  
JULY 19, 1894  
GREGORY L. WILSON  
2687

EXPIRES: 6/30/2022

UPDATE - NW PARKING LOT 6/01/2021

TOPOGRAPHIC SURVEY

ABBREVIATIONS	
ASPH	ASPHALT
AD	AREA DRAIN
ASSY	ASSEMBLY
BLDG.	BUILDING
BW	BOTTOM OF WALL
CATV	CABLE TELEVISION
CB	CATCH BASIN
CO	CLEAR-OUT
CONC	CONCRETE
CL	CENTERLINE
DIP	DUCTILE IRON PIPE
EG	EDGE OF GRAVEL
EGP, EP	EDGE OF PAVEMENT
ELEV	ELEVATION
EX, EXIST.	EXISTING
FDC	FIRE DEPT. CONNECTOR
FT	FEET
FF	FINISH FLOOR
FG	FINISH GRADE
FH	FIRE HYDRANT
FI	FIELD INLET
FM	FORCE MAIN
GRAV	GRAVEL
GM	GAS METER
GP	GATE POST
GS	GROUND SHOT
GV	GAS VALVE
HC	HANDICAP
HOPE	HIGH-DENSITY POLYETHYLENE
HYD	HYDRANT
IR	IRON ROD
IP	IRON PIPE
IRR	IRRIGATION
IE	INVERT ELEVATION
JB	JUNCTION BOX
P	LIGHT POLE
M	METER, MAIN
MH	MANHOLE
OH	OVER-HEAD
P/L	PROPERTY LINE
PP	POWER POLE
POLYV	POLYVINYL CHLORIDE
PWR	POWER
R, RAD	RADIUS
ROW, R/W	RIGHT-OF-WAY
SS	SANITARY SEWER
SD	STORM DRAIN
SVC	SERVICE
SWK, S/W	SIDEWALK
TC	TOP OF CURB
TEL	TELEPHONE
TR	TRANSFORMER
TS	TRAFFIC SIGNAL
TW	TOP OF WALL
TYP	TYPICAL
UG, U/G	UNDER GROUND
UTL	UTILITY
VC	VALLEY GUTTER
VL	VAULT
W/	WITH
WM	WATER METER
WLM	WETLANDS MARKER
YPC	YELLOW PLASTIC CAP

SYMBOLS	
AD	AREA DRAIN
CB	CATCH BASIN
CO	CLEANOUT
FH	FIRE HYDRANT
GV	GAS VALVE
WV	WATER VALVE
GM	GAS/POWER/WATER METER
DSO	DOWN SPOUT
MH	MANHOLE TELEPHONE
MSD	MANHOLE STORM DRAIN
MSW	MANHOLE SANITARY SEWER
IR	IRON ROD
IP	IRON PIPE
IRR	IRRIGATION
IE	INVERT ELEVATION
JB	JUNCTION BOX
P	LIGHT POLE
M	METER, MAIN
MH	MANHOLE
OH	OVER-HEAD
P/L	PROPERTY LINE
PP	POWER POLE
POLYV	POLYVINYL CHLORIDE
PWR	POWER
R, RAD	RADIUS
ROW, R/W	RIGHT-OF-WAY
SS	SANITARY SEWER
SD	STORM DRAIN
SVC	SERVICE
SWK, S/W	SIDEWALK
TC	TOP OF CURB
TEL	TELEPHONE
TR	TRANSFORMER
TS	TRAFFIC SIGNAL
TW	TOP OF WALL
TYP	TYPICAL
UG, U/G	UNDER GROUND
UTL	UTILITY
VC	VALLEY GUTTER
VL	VAULT
W/	WITH
WM	WATER METER
WLM	WETLANDS MARKER
YPC	YELLOW PLASTIC CAP

LINE TYPES	
CATV LINE	CATV
COMMUNICATION LINE	COM
EASEMENT LINE	EAS
FENCE LINE	FEN
FIBER OPTIC LINE	FIB
GAS LINE	GAS
EDGE OF GRAVEL LINE	EG
OVERHEAD LINE	OH
PHONE LINE	PH
POWER LINE	PWR
SANITARY SEWER LINE	SS
STORM DRAIN LINE	SD
WATER LINE	W

