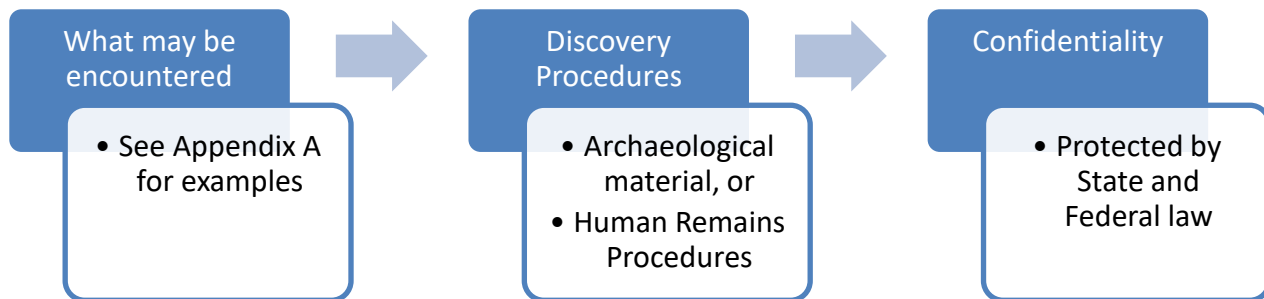


ARCHAEOLOGICAL INADVERTENT DISCOVERY PLAN (IDP)

Meyer Farm Subdivision

Project Manager: Emerio Design
Roy Hankins

HOW TO USE THIS DOCUMENT



Archaeology consists of the physical remains of the activities of people in the past. This IDP should be followed should any archaeological sites, objects, or human remains are found. These are protected under Federal and State laws and their disturbance can result in criminal penalties.

This document pertains to the work of the Contractor, including any and all individuals, organizations, or companies associated with Meyer Farm Subdivision.

WHAT MAY BE ENCOUNTERED

Archaeology can be found during any ground-disturbing activity. If encountered all excavation and work in the area **MUST STOP**. Archaeological objects vary and can include evidence or remnants of historic-era and precontact activities by humans. Archaeological objects can include but are not limited to:

- **Stone flakes, arrowheads, stone tools, bone or wooden tools, baskets, beads.**
- Historic building materials such as **nails, glass, metal** such as cans, barrel rings, farm implements, **ceramics, bottles, marbles, beads.**
- Layers of **discolored earth** resulting from hearth fire
- Structural remains such as **foundations**
- **Shell** Middens
- **Human skeletal remains** and/or **bone fragments** which may be whole or fragmented.

For photographic examples of artifacts, please see Appendix A. (Human remains not included)

If there is an inadvertent discovery of any archaeological objects see procedures below.

If in doubt call it in.

DISCOVERY PROCEDURES: WHAT TO DO IF YOU FIND SOMETHING

1. Stop ALL work in the vicinity of the find

2. Secure and protect area of inadvertent discovery with 30 meter/100 foot buffer—work may continue outside of this buffer
3. Notify Project Manager and Agency Official
4. Project Manager will need to contact a professional archaeologist to assess the find.
5. If archaeologist determines the find is an archaeological site or object, contact SHPO. If it is determined to *not* be archaeological, you may continue work.

HUMAN REMAINS PROCEDURES

1. If it is believed the find may be human remains, stop ALL work.
2. Secure and protect area of inadvertent discovery with 30 meter/100 foot buffer, then work may continue outside of this buffer with caution.
3. Cover remains from view and protect them from damage or exposure, restrict access, and leave in place until directed otherwise. **Do not take photographs. Do not speak to the media.**
4. Notify:
 - Project Manager
 - Agency Official
 - Oregon State Police **DO NOT CALL 911**
 - SHPO
 - LCIS
 - Appropriate Native American Tribes
5. If the site is determined not to be a crime scene by the Oregon State Police, do not move anything! The remains will continue to be *secured in place* along with any associated funerary objects, and protected from weather, water runoff, and shielded from view.
6. Do not resume any work in the buffered area until a plan is developed and carried out between the State Police, SHPO, LCIS, and appropriate Native American Tribes and you are directed that work may proceed.

CONTACT INFORMATION

- Project Manager, Roy Hankins: 503-746-8812
- Agency Official, Kimberli Fitzgerald: 503-540-2397 or 503-351-7578
- Contracted Archaeologist, Karry Blake, MA, RPA: 503-372-3649
- Oregon State Police, Lt. Craig Heuberger: 503-508-0779 cheuber@osp.oregon.gov
- Oregon State Historic Preservation Office (SHPO),
 - Asst. State Archaeologist, John Pouley: 503-480-9164
 - GIS Archaeologist, Jamie French: 503-979-7580
- LCIS, Mitch Sparks: 503-986-1086
- Appropriate Tribes
 - Tribes of the Grand Ronde: Briece Edwards (503-879-2084)
 - Tribes of Siletz-Peter Hatch: 541-444-8319 OR Robert Kentta (541-351-0148)
 - Tribes of Warm Springs: Christian Nauer (541-553-3464)

CONFIDENTIALITY

All contractors and consultants associated with the Meyer Farms Subdivision project shall make their best efforts, in accordance with federal and state law, to ensure that its personnel and contractors keep the discovery confidential. The media, or any third-party member or members of the public are not to be contacted or have information regarding the discovery, and any public or media inquiry is to be reported to Roy Hankins. Prior to any release, the responsible agencies and Tribes shall concur on the amount of information, if any, to be released to the public.

To protect fragile, vulnerable, or threatened sites, the National Historic Preservation Act, as amended (Section 304 [16 U.S.C. 470s-3]), and Oregon State law (ORS 192.501(11)) establishes that the location of archaeological sites, both on land and underwater, shall be confidential.

APPENDICES AND SUPPLEMENTARY MATERIALS

A. Visual reference and examples of archaeology

APPENDIX A

VISUAL REFERENCE GUIDE TO ENCOUNTERING ARCHAEOLOGY



Figure 1: Stone flakes



Figure 2: Stone tool fragments



Figure 3: Cordage



Figure 4: Shell midden



Figure 5: Historic glass artifacts

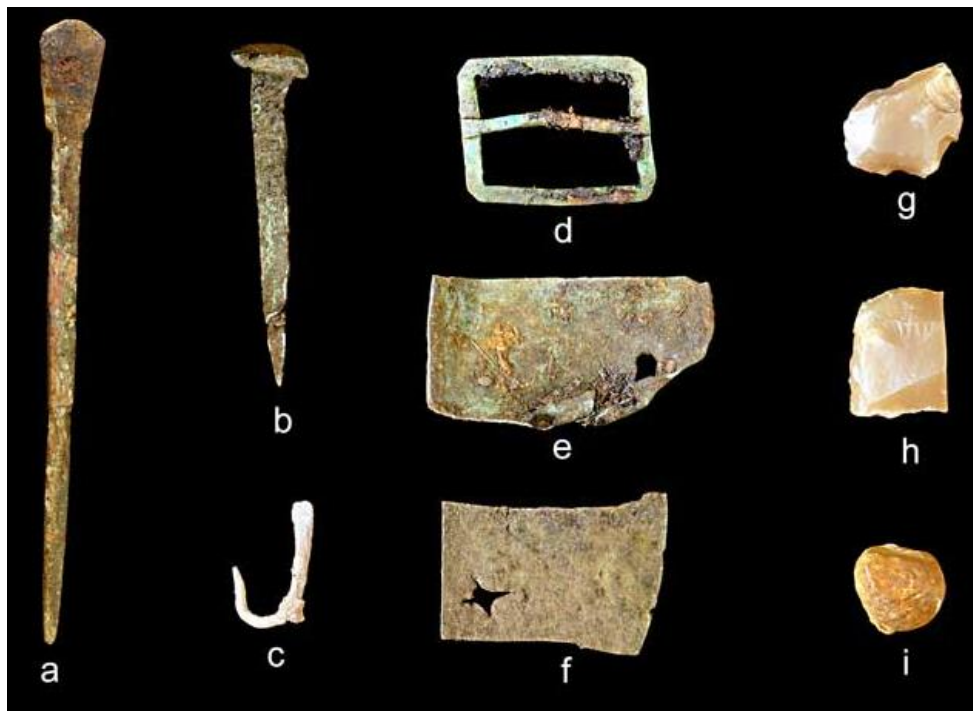


Figure 6: Historic metal artifacts



Figure 7: Historic building foundations

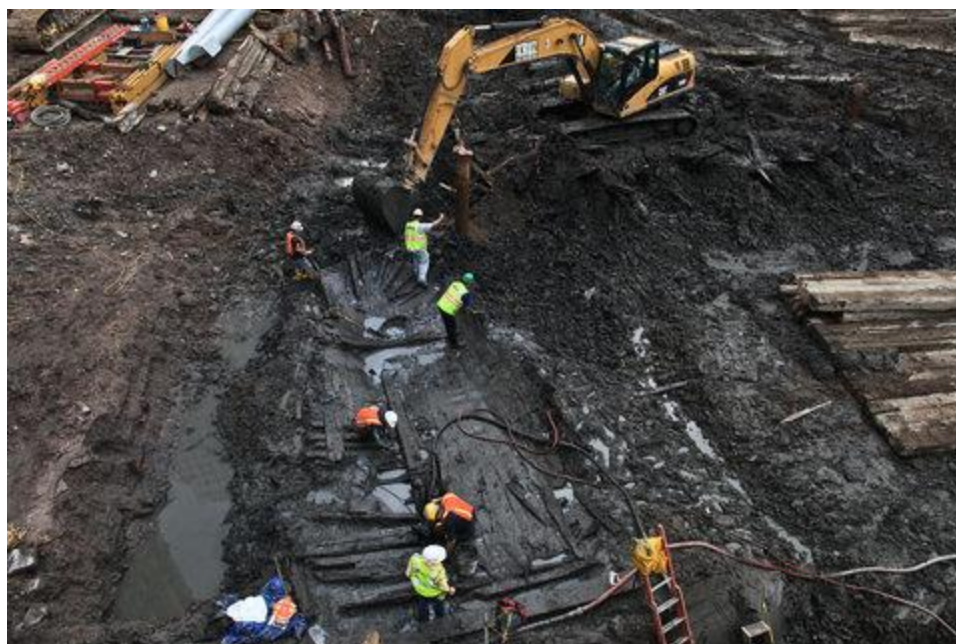


Figure 8: 18th Century ship