

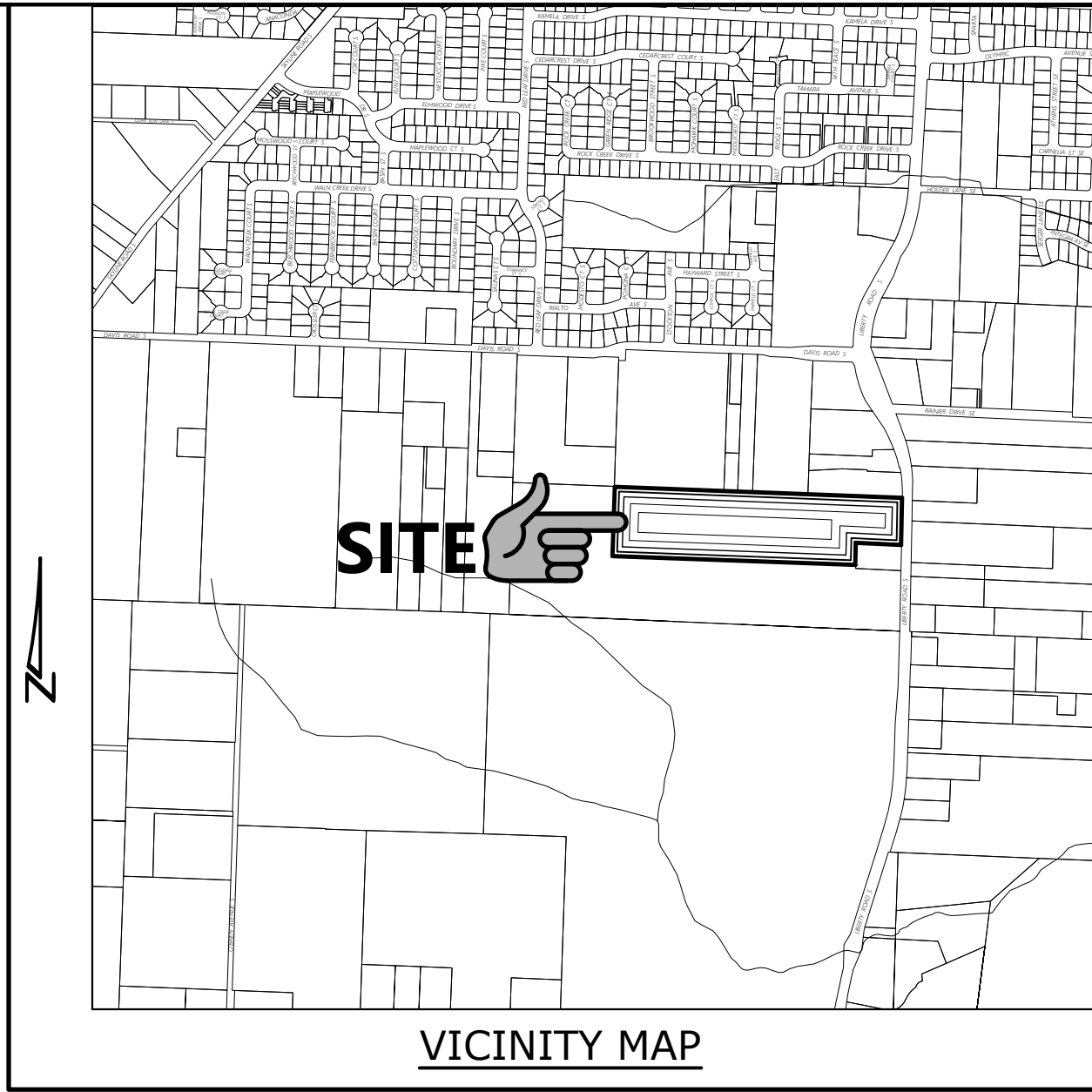
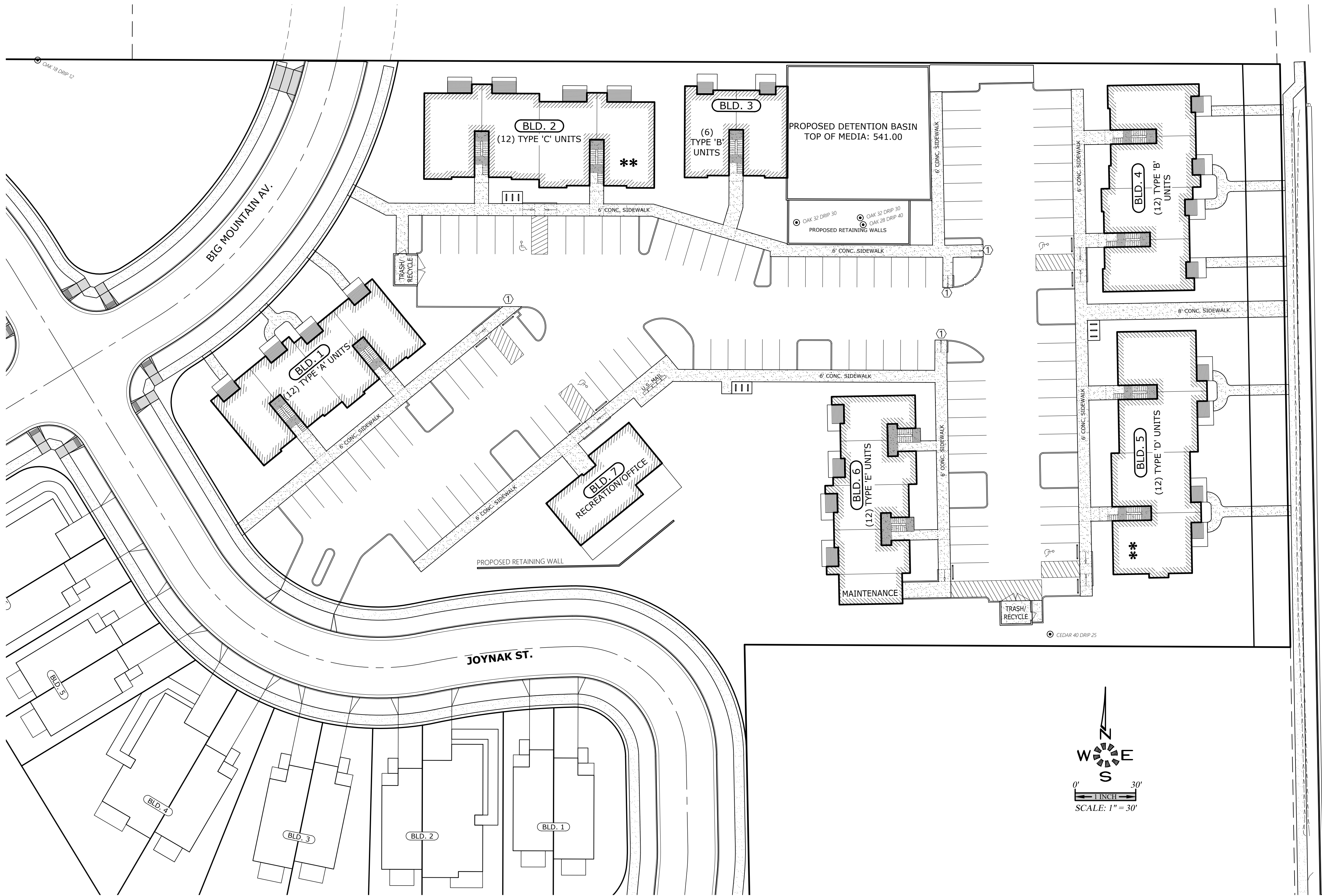
LIBERTY ROAD APARTMENTS

SEC. 16, T. 8 S., R. 3 W., W.M.
CITY OF SALEM
MARION COUNTY, OREGON

Owner / Developer:

HARRISON INDUSTRIES, L.L.C.

10355 Liberty Road S.
SALEM, OREGON 97306



VICINITY MAP

SHEET INDEX

- SDR1 COVER SHEET
- SDR2 EXISTING CONDITIONS PLAN
- SDR3 SITE PLAN
- SDR4 OPEN SPACE PLAN
- SDR5 GRADING & DRAINAGE PLAN
- SDR6 PRIVATE SANITARY SEWER PLAN
- SDR7 PRIVATE DOMESTIC WATER PLAN
- SDR8 PRIVATE FIRE SERVICE PLAN

L1.1 SCHEMATIC LANDSCAPE PLAN

BUILDING 1 (TYPE 'A' UNITS)

- A1.3 LOWER FLOOR PLAN
- A1.4 MIDDLE & UPPER FLOOR PLAN
- A1.8 BUILDING ELEVATIONS

BUILDING 2 (TYPE 'C' UNITS)

- A2.3 LOWER FLOOR PLAN
- A2.4 UPPER FLOOR PLAN
- A2.8 BUILDING ELEVATIONS

BUILDING 3 (TYPE 'B' UNITS)

- A3.3 LOWER FLOOR PLAN
- A3.4 MIDDLE & UPPER FLOOR PLAN
- A3.8 BUILDING ELEVATIONS

BUILDING 4 (TYPE 'B' UNITS)

- A4.3 LOWER FLOOR PLAN
- A4.4 MIDDLE & UPPER FLOOR PLAN
- A4.8 BUILDING ELEVATIONS

BUILDING 5 (TYPES 'D' UNITS)

- A5.3 LOWER FLOOR PLAN
- A5.4 MIDDLE FLOOR PLAN
- A5.5 UPPER FLOOR PLAN
- A5.9 BUILDING ELEVATIONS

BUILDING 6 (TYPE 'E' UNITS)

- A6.3 LOWER FLOOR PLAN
- A6.4 MIDDLE & UPPER FLOOR PLAN
- A6.8 BUILDING ELEVATIONS

BUILDING 7 (RECREATION BUILDING)

- A7.3 LOWER FLOOR PLAN
- A7.6 BUILDING ELEVATIONS

MULTI/TECH

ENGINEERING SERVICES, INC.
1155 13th ST., S.E. SALEM, OR, 97302
PH: (503) 363 - 9227 FAX (503) 364-1260
www.rteengineering.net office@rteengineering.net

COVER SHEET

LIBERTY ROAD APARTMENTS

NO CHANGES, MODIFICATIONS
OR REPRODUCTIONS TO BE
MADE TO THESE DRAWINGS
WITHOUT WRITTEN
AUTHORIZATION FROM THE
DESIGN ENGINEER.
DIMENSIONS & NOTES TAKE
PRECEDENCE OVER
GRAPHICAL REPRESENTATION.

Design: M.D.G.
Drawn: P.H.S.
Checked: M.D.G.
Date: JAN. 2020
Scale: AS SHOWN



EXPIRES: 06-30-2021

JOB # 6727

SDR1