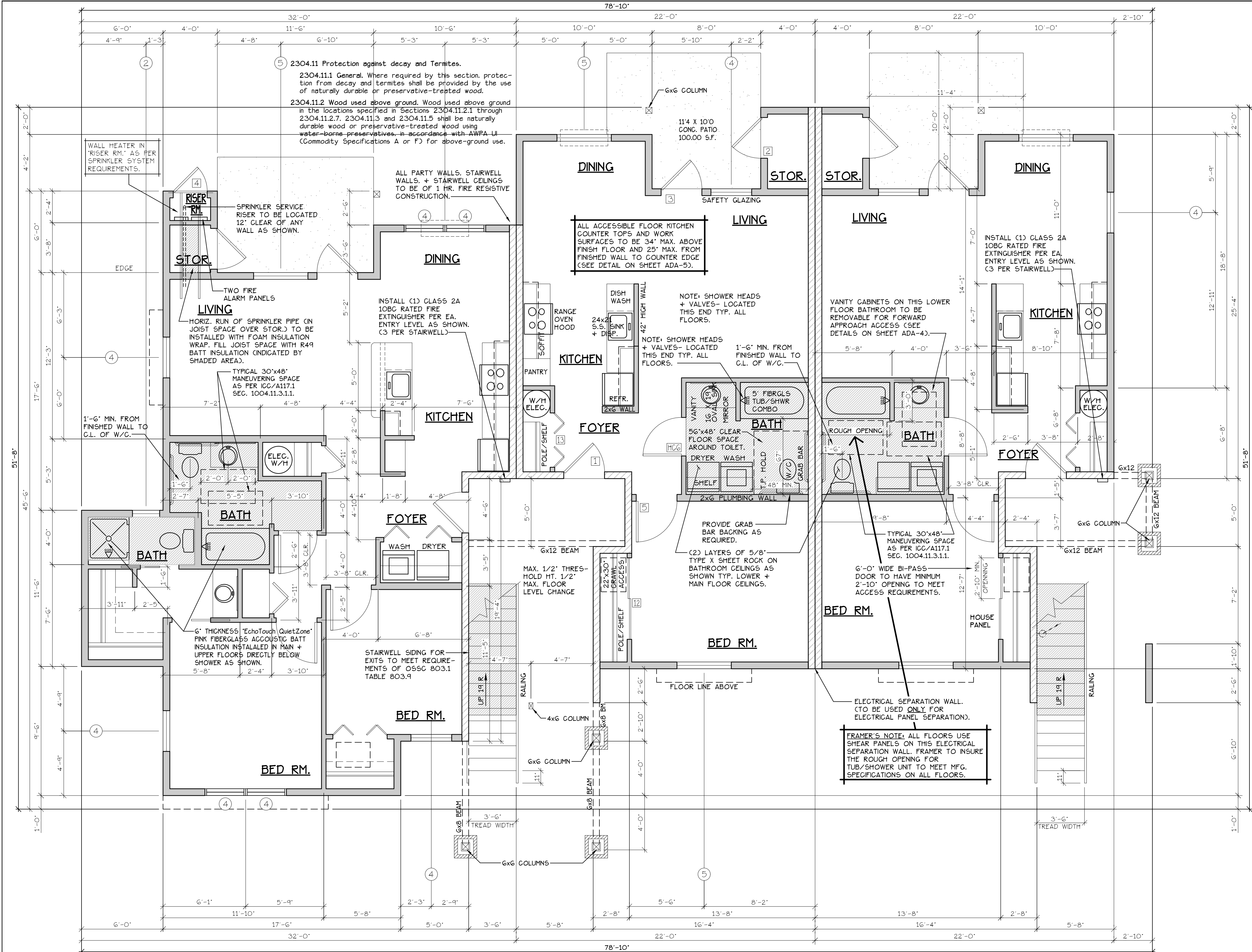


LOWER FLOOR PLAN
AT FAIRVIEW 2



INTERIOR FRAMING

INTERIOR FEATURES

END STAIRWELL FRAMING

TYPE B UNIT

TYPE C UNITS

CONSTRUCTION TYPE V B SPRINKLED
SEE WALL DETAIL SHEETS FOR SHEETROCK APPLICATION.

SEE 'GENERAL STRUCTURAL NOTES' ON SHEET A10.2 BEFORE BEGINNING ANY CONSTRUCTION.

FLOOR/CEILING ASSEMBLY AT TUB/SHOWERS

Solid wood post floor, 38 mm x 225 mm (1-1/2" x 9-1/4") posts, spaced 406 mm (16") o.c., 15.5 mm (5/8") OSB subfloor, resilient channels spacing specified below, angle 152 mm (6") thickness EcoTough[®] QuietZone[®] PINK[®] FIBERGLASS[®] Acoustic Batt Insulation, double layer type 'X' gypsum board thickness specified below
Gypsum board thickness: Resilient channel spacing o.c.
15.5 mm (5/8") 610 mm (24")
12.7 mm (1/2") 610 mm (24")
12.7 mm (1/2") 406 mm (16")

LOWER FLOOR PLAN
SCALE: 1/4" = 1'-0"
(HANDICAP ADAPTABLE/ACCESSIBLE) **BLD. 26**
"B" UNIT = 1029 S.F. "C" UNIT = 750 S.F.

DOOR SCHEDULE									
NO.	DOORS		FRAMES		REMARKS				
	WIDTH	HEIGHT	THICK/TYP.	MATL.					
1	3'-0"	6'-8"	1-3/4"	MTL. GLAD	PAINT A METAL PAINT				
2	3'-0"	6'-8"	1-3/4"	MTL. GLAD	PAINT B METAL PAINT				
3	3'-0"	6'-8"	1-3/4"	MTL. GLAD	PAINT C METAL PAINT				
4	2'-6"	6'-8"	1-3/4"	MTL. GLAD	PAINT D METAL PAINT				
5	3'-0"	6'-8"	1-3/8"	H.G. BRCH	STAIN E HEML. OCK STAIN				
6	2'-10"	6'-8"	1-3/8"	H.G. BRCH	STAIN E HEML. OCK STAIN				
7	2'-10"	6'-8"	1-3/8"	H.G. BRCH	STAIN E HEML. OCK STAIN				
8	2'-10"	6'-8"	1-3/8"	H.G. BRCH	STAIN E HEML. OCK STAIN				
9	2'-10"	6'-8"	1-3/8"	H.G. BRCH	STAIN E HEML. OCK STAIN				
10	4'-0"	6'-8"	1-3/8"	H.G. BRCH	STAIN G HEML. OCK STAIN				
11	5'-8"	6'-8"	1-3/8"	H.G. BRCH	STAIN G HEML. OCK STAIN				
12	6'-0"	6'-8"	1-3/8"	H.G. BRCH	STAIN G HEML. OCK STAIN				
13	4'-0"	6'-8"	1-3/8"	H.G. BRCH	STAIN H HEML. OCK STAIN				
14	5'-0"	6'-8"	1-3/8"	H.G. BRCH	STAIN H HEML. OCK STAIN				
15	6'-0"	6'-8"	1-3/8"	H.G. BRCH	STAIN H HEML. OCK STAIN				
16	1'-8"	6'-8"	1-3/8"	H.G. BRCH	STAIN I HEML. OCK STAIN				
17	3'-0"	6'-8"	1-3/4"	MTL. GLAD	PAINT F METAL PAINT				
18	3'-0"	6'-8"	1-3/4"	MTL. GLAD	PAINT F METAL PAINT				
19	2'-4"	6'-8"	1-3/8"	H.G. BRCH	STAIN J HEML. OCK STAIN				

WINDOW SCHEDULE						
NO.	SIZE	TYPE	MFG.	COLOR	INSUL.	REMARKS
1	16 X 16	VNTL. STAT.	MLGARD	WHITE	YES	STATIONARY
2	20 X 16	VNTL. STAT.	MLGARD	WHITE	YES	STATIONARY
3	30 X 40	VNTL. SGH.	MLGARD	WHITE	YES	SINGLE HUNG W/ SCREEN
4	30 X 50	VNTL. SGH.	MLGARD	WHITE	YES	SINGLE HUNG W/ SCREEN
5	40 X 50	VNTL. SGH.	MLGARD	WHITE	YES	SINGLE HUNG W/ SCREEN
6	50 X 50	VNTL. SGH.	MLGARD	WHITE	YES	SINGLE HUNG W/ SCREEN
7	30 X 46	VNTL. SGH.	MLGARD	WHITE	YES	SINGLE HUNG W/ SCREEN
8	30 X 46	CASEMENT	MLGARD	WHITE	YES	GASEMENT W/ SCREEN
9	20 X 50	VNTL. STAT.	MLGARD	WHITE	YES	STATIONARY

NOTE: ALL LOWER FLOOR OPERABLE WINDOWS + HARDWARE TO COMPLY WITH O.S.S.C. 2014 CHAPTER 11 SEC. 1107.2 ON TO ICC/ANSI A117.1 THEN SEC. 1002.9. OPERABLE PARTS SHALL COMPLY WITH SEC. 309. SEE 'OPERABLE WINDOWS IN ACCESSIBLE LOCATIONS' DETAIL ON SHEET ADA-5. ALL LOWER FLOOR WINDOW HEADERS TO BE SET MIN. 7'-0" A.F.F. UNO.

NOTE: FOR WINDOW PLACEMENT SEE 'WINDOW PLACEMENT FOR EGRESS + FALL PROTECTION' DETAIL ON SHEET A20.4.

NOTE: ALL ACCESSIBLE DOORS SHALL BE PROVIDED WITH LEVER DOOR HARDWARE + OTHER OPERATING DEVICES IN COMPLIANCE WITH ICC/ANSI A117.1 SECTIONS 309.4, AND 404.2.6.

NOTE: MAX. U-VALUE FOR ALL WINDOWS AS PER TABLE 401.1(2) OESG U-0.32.

NOTE: WINDOW SILLS MORE THAN 72" ABOVE FINISH GRADE SHALL BE A MINIMUM OF 36" ABOVE FINISH FLOOR SURFACE (OR) BE INSTALLED WITH WINDOW OPENING CONTROL DEVICES IN COMPLIANCE WITH THE 2014 O55C SECTIONS 1013.8.1 AND 1029.4.

CONSTRUCTION TYPE V B SPRINKLED.

GENERAL NOTES:

- ALL EXTERIOR WALLS TO BE 2 X 4 STUDS. ALL OTHER WALLS TO BE 2 X 4 STUDS UNLESS OTHERWISE NOTED.
- FIRE BLOCK CONCEALED SPACES (VERTICAL + HORIZONTAL) AS PER O55C 718.2.2 AND O55C 718.2.3.
- PRIOR TO INSTALLATION OF FIBERGLASS TUB/SHOWER + SHOWER UNITS, SHEET ROCK SHALL BE APPLIED TO STUD WALLS AS INDICATED ON PLANS.
- ALL BATH FANS TO HAVE MIN. 80 CFM. RANGE HOOD EXHAUST FANS TO HAVE MIN. 150 CFM.
- ELECTRIC OUTLETS IN 1 HR. WALL MAY NOT BE BACK TO BACK AND MUST BE SEPARATED BY HORIZONTAL DISTANCE OF 2'-0".
- ALL EXTERIOR FLOOD LIGHTING SHALL BE CONNECTED TO HOUSE PANELS LOCATED IN ON-SITE UTILITY ROOMS + STORAGE BLD'S.
- AS PER O55C HIGH-EFFICIENCY LIGHTING SYSTEMS - A MINIMUM OF 50 PERCENT OF THE LAMPS IN PERMANENTLY INSTALLED LIGHTING FIXTURES SHALL BE COMPACT OR LINEAR FLUORESCENT, OR A LIGHTING SOURCE THAT HAS A MINIMUM EFFICACY OF 40 LUMENS PER INPUT WATT.
- ALL TYPE 'A' ACCESSIBLE UNITS REQUIRE THE PATIO TO BE AT SAME LEVEL AS DWELLING UNIT.

HANDICAP UNIT NOTES:

THE UNITS HAVE BEEN DESIGNED TO COMPLY WITH O55C 2014 REVISED TO BE EFFECTIVE APRIL 1, 2014. CHAPTER 11 OF THE O55C 2014 AS REVISED INCORPORATES AS PART OF IT AMERICAN NATIONAL STANDARD ICC/ANSI A117.1-1003. WITHIN ICC/ANSI A117.1 CHAPTER 10 SETS OUT SPECIFIC CODE REQUIREMENTS FOR DWELLING AND SLEEPING UNITS. CHAPTER 10 SETS OUT THE CODE REQUIREMENTS THAT ALL GROUND FLOOR UNITS MUST MEET.

THE INTENT IS THAT 'ALL' GROUND FLOOR UNITS ARE TO BE DESIGNED AND CONSTRUCTED IN ACCORDANCE WITH THE PROVISIONS OF THIS CODE.

WITHIN THE PROJECT THERE ARE ALSO TYPE 'B' UNITS WHICH MUST MEET SPECIFIC REQUIREMENTS SET OUT IN ICC/ANSI A117.1 CHAPTER 10, SECTION 1003.

WITHIN THE PROJECT THERE ARE ALSO TYPE 'B' UNITS WHICH MUST MEET SPECIFIC REQUIREMENTS SET OUT IN ICC/ANSI A117.1 CHAPTER 10, SECTION 1004. ALL ACCESSIBLE FLOOR UNITS WITHIN THIS PROJECT ARE TO BE TYPE 'B' UNITS UNLESS SPECIFICALLY DESIGNATED TYPE 'A' UNITS. WITHIN THESE TYPE 'B' UNITS THE MAIN BATHROOM (OR ONLY BATHROOM) SHALL BE DESIGNATED AS AN OPTION 'B' ADAPTABLE BATHROOM WHICH MUST MEET THE REQUIREMENTS OF ICC/ANSI A117.1 SECTION 1004.11.3.2.

ATTACHED TO THE DRAWING SETS ARE OUR SHEETS ADA-1 THRU 5 THAT SET OUT SPECIFIC INFORMATION FROM O55C 2014, CHAPTER 10 AS WELL AS THE REFERENCED DOCUMENTS. THE DRAWINGS SET OUT SPECIFIC MINIMUM ELEMENTS AND DIMENSIONS THAT MUST BE MET TO ASSURE COMPLIANCE WITH THIS CODE.

NO CHANGES, MODIFICATIONS OR REVISIONS TO BE MADE TO THIS DRAWING WITHOUT THE AUTHORIZATION FROM THE DESIGN ENGINEER.
DIMENSIONS & NOTES TAKE PRECEDENCE OVER GRAPHICAL REPRESENTATION.

Design: P.L.M.
Drawn: G.L.D.
Checked: M.D.G.
Date: Jan-21
Scale: AS SHOWN

REGISTERED PROFESSIONAL ENGINEER
MARK D. GREY
RENEW DATE: JUN 30, 2021

A5.31