

UPPER FLOOR PLAN

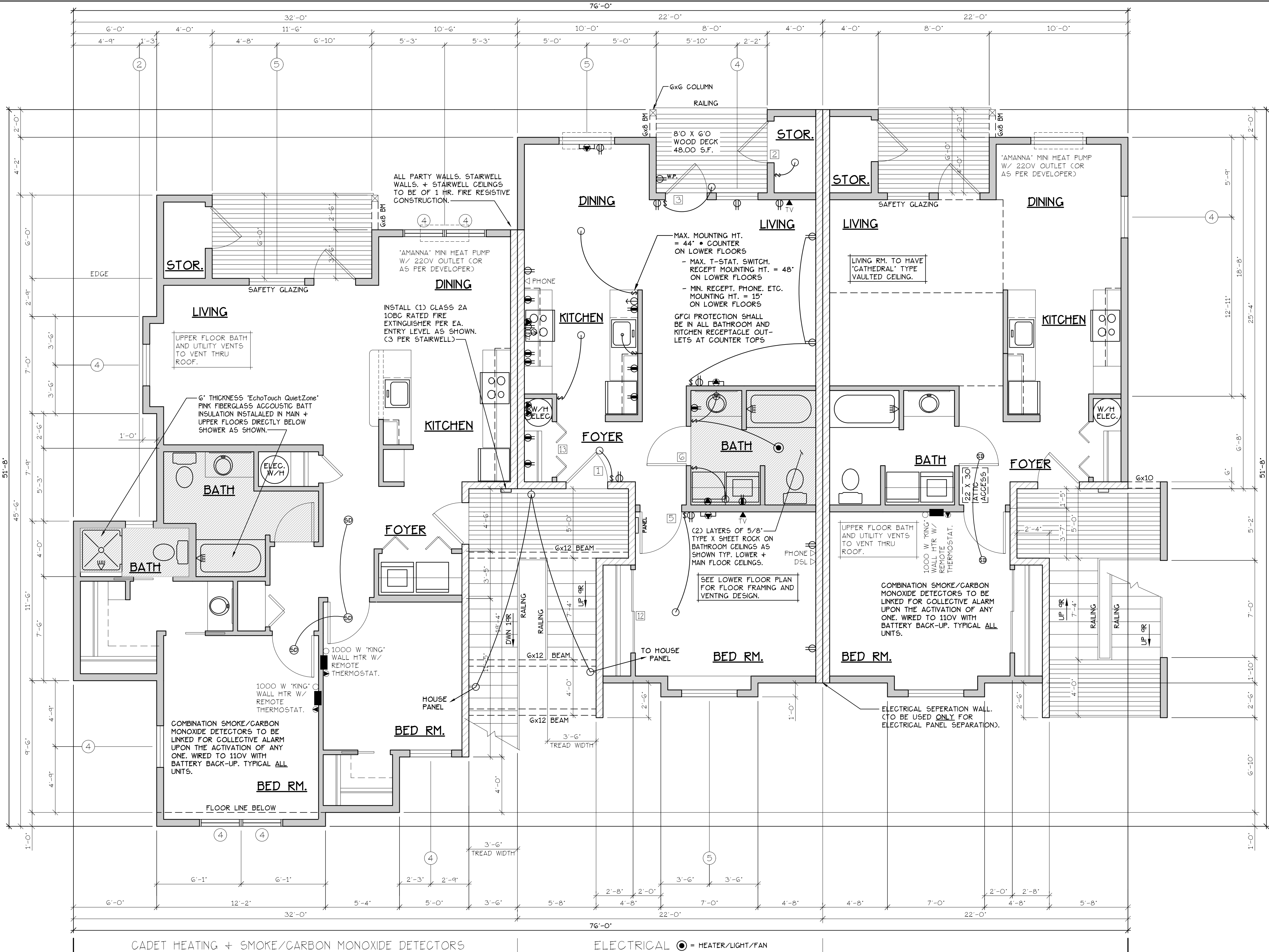
THE GROVE AT FAIRVIEW 2

NO CHANGES, MODIFICATIONS OR REVISIONS TO BE MADE TO THIS DRAWING WITHOUT THE AUTHORIZATION FROM THE DESIGN ENGINEER.
DIMENSIONS & NOTES TAKE PRECEDENCE OVER GRAPHICAL REPRESENTATION.

Design: P.L.M. AS 5041R
Drawn: G.L.D.
Checked: M.D.G.
Date: Jan-21
Scale: AS SHOWN
JOB # 7111



A5.41



UPPER FLOOR PLAN
SCALE: 1/4" = 1'-0"
'B' UNIT = 1029 S.F.
'C' UNIT = 750 S.F.
BLD. 26
CONSTRUCTION TYPE V B SPRINKLED
SEE WALL DETAIL SHEETS FOR SHEETROCK APPLICATION.

DOOR SCHEDULE											
#	WIDTH	HEIGHT	THICK	TYP.	MATE.	FIN.	FRAMES		REMARKS		
							MATE.	FIN.			
1	3'-0"	6'-8"	1-3/4"	MTL.	CLAD	PANT	A	METAL	PAINT	6 PANEL 60 MIN RATED ASSY. W/ THRESHOLD, WEATHERSTRIP, CLOSURES, W/ THRESHOLD, LOUVERS, WEATHERSTRIP AND KEYS LOCK.	
2	3'-0"	6'-8"	1-3/4"	MTL.	CLAD	PANT	B	METAL	PAINT	W/ THRESHOLD, LOUVERS, WEATHERSTRIP AND KEYS LOCK.	
3	3'-0"	6'-8"	1-3/4"	MTL.	CLAD	PANT	C	METAL	PAINT	FULL LITE, TEMP. GLASS, LOCK, THRESHOLD + WEATHERSTRIP W/ THRESHOLD, WEATHERSTRIP AND KEYS LOCK.	
4	2'-6"	6'-8"	1-3/4"	MTL.	CLAD	PANT	D	METAL	PAINT	W/ THRESHOLD, WEATHERSTRIP AND KEYS LOCK.	
5	3'-0"	6'-8"	1-3/8"	H.G.	BRCH	STAIN	E	HEMLOCK	STAIN		
6	2'-10"	6'-8"	1-3/8"	H.G.	BRCH	STAIN	F	HEMLOCK	STAIN		
7	2'-6"	6'-8"	1-3/8"	H.G.	BRCH	STAIN	G	HEMLOCK	STAIN		
8	2'-0"	6'-8"	1-3/8"	H.G.	BRCH	STAIN	H	HEMLOCK	STAIN		
9	2'-10"	6'-8"	1-3/8"	H.G.	BRCH	STAIN	I	HEMLOCK	STAIN	POCKET DOOR	
10	2'-10"	6'-8"	1-3/8"	H.G.	BRCH	STAIN	J	HEMLOCK	STAIN	POCKET DOOR*	
11	4'-0"	6'-8"	1-3/8"	H.G.	BRCH	STAIN	K	HEMLOCK	STAIN	B-PASS DOOR	
12	6'-0"	6'-8"	1-3/8"	H.G.	BRCH	STAIN	L	HEMLOCK	STAIN	B-PASS DOOR	
13	4'-0"	6'-8"	1-3/8"	H.G.	BRCH	STAIN	M	HEMLOCK	STAIN	B-FOLD DOOR	
14	5'-0"	6'-8"	1-3/8"	H.G.	BRCH	STAIN	N	HEMLOCK	STAIN	B-FOLD DOOR	
15	6'-0"	6'-8"	1-3/8"	H.G.	BRCH	STAIN	O	HEMLOCK	STAIN	B-FOLD DOOR	
16	1'-8"	6'-8"	1-3/8"	H.G.	BRCH	STAIN	P	HEMLOCK	STAIN	B-FOLD DOOR	
17	3'-0"	6'-8"	1-3/4"	MTL.	CLAD	PANT	Q	METAL	PAINT	PAIR OF 3'-0" FRENCH DOORS.	
18	3'-0"	6'-8"	1-3/8"	S.G.	BRCH	STAIN	R	HEMLOCK	STAIN	FULL LITE W/ TEMPERED GLASS.	
19	2'-4"	6'-8"	1-3/8"	H.G.	BRCH	STAIN	S	HEMLOCK	STAIN	POCKET DOOR	

* ACCESSIBLE POCKET DOORS MUST STOP FULLY OPEN WITH THEIR OPERATING HANDLES FULLY EXPOSED.

WINDOW SCHEDULE											
#	SIZE	TYPE	MFG.	COLOR	INSUL.	REMARKS	HEADERS				
1	1'6" X 1'6"	VNLT STAT.	MILGARD	WHITE	YES	STATIONARY	DF#1 4x12				
2	2'0" X 1'6"	VNLT STAT.	MILGARD	WHITE	YES	STATIONARY	DF#1 4x12				
3	3'0" X 4'0"	VNLT SGR.	MILGARD	WHITE	YES	SINGLE HUNG W/ SCREEN	DF#1 4x12				
4	3'0" X 5'0"	VNLT SGR.	MILGARD	WHITE	YES	SINGLE HUNG W/ SCREEN	DF#1 6x8 (SEE ALT. HEADER DETAIL SHT. A20.40)				
5	4'0" X 5'0"	VNLT SGR.	MILGARD	WHITE	YES	SINGLE HUNG W/ SCREEN	DF#1 6x8 (SEE ALT. HEADER DETAIL SHT. A20.40)				
6	5'0" X 5'0"	VNLT SGR.	MILGARD	WHITE	YES	SINGLE HUNG W/ SCREEN	DF#1 6x8 (SEE ALT. HEADER DETAIL SHT. A20.40)				
7	3'0" X 4'6"	VNLT SGR.	MILGARD	WHITE	YES	SINGLE HUNG W/ SCREEN	DF#1 4x12				
8	3'0" X 4'6"	CASEMENT	MILGARD	WHITE	YES	CASEMENT W/ SCREEN	DF#1 4x12				
9	2'0" X 5'0"	VNLT STAT.	MILGARD	WHITE	YES	STATIONARY	DF#1 6x8 (SEE ALT. HEADER DETAIL SHT. A20.40)				

NOTE: ALL LOWER FLOOR OPERABLE WINDOWS + HARDWARE TO COMPLY WITH O.S.S.C. 2014 CHAPTER 11 SEC. 1107.2 ON TO ICC/ANSI A117.1 THEN SEC. 1002.4. OPERABLE PARTS SHALL COMPLY WITH SEC. 309.4. SEE 'OPERABLE WINDOWS IN ACCESSIBLE LOCATIONS' DETAIL ON SHEET ADA-5. ALL LOWER FLOOR WINDOW HEADERS TO BE SET MIN. 7'-0" A.F.F. U.N.O.

NOTE: FOR WINDOW PLACEMENT SEE 'WINDOW PLACEMENT FOR EGRESS + FALL PROTECTION' DETAIL ON SHEET A20.4.

(F) 907.2.10.3 SMOKE ALARMS, SINGLE AND MULTIPLE-STATION SMOKE ALARMS SHALL BE INSTALLED IN ACCORDANCE WITH SECTION 907.2.11.
(F) 907.2.11 SINGLE AND MULTIPLE-STATION SMOKE ALARMS, LISTED SINGLE AND MULTIPLE-STATION SMOKE ALARMS COMPLYING WITH UL 217 SHALL BE INSTALLED IN ACCORDANCE WITH SECTIONS 907.2.11.1 THROUGH 907.2.11.4 AND NFPA 72.

NOTE: ALL ACCESSIBLE DOORS SHALL BE PROVIDED WITH LEVER DOOR HARDWARE + OTHER OPERATING DEVICES IN COMPLIANCE WITH ICC/ANSI A117.1 SECTIONS 309.4. AND 404.2.6.

NOTE: MAX. U-VALUE FOR ALL WINDOWS AS PER TABLE 401.1(2) OESG U=0.32.

NOTE: WINDOW SILLS MORE THAN 72" ABOVE FINISH GRADE SHALL BE A MINIMUM OF 36" ABOVE FINISH FLOOR SURFACE (COR) BE INSTALLED WITH WINDOW OPENING CONTROL DEVICES IN COMPLIANCE WITH THE 2014 OESG SECTIONS 1013.8.1 AND 1029.4.

NOTE: MAN + UPPER FLOOR DOORS ARE SIZED THE SAME AS LOWER FLOOR DOORS. DOOR SIZE OPTIONS FOR MAN + UPPER FLOORS ARE AS FOLLOWS:
BED RM. = 2'-6" DOOR
BATH RM. = 2'-4" DOOR

SEE 'GENERAL STRUCTURAL NOTES' ON SHEET A10.2 BEFORE BEGINNING ANY CONSTRUCTION.

CONSTRUCTION TYPE V B SPRINKLED.