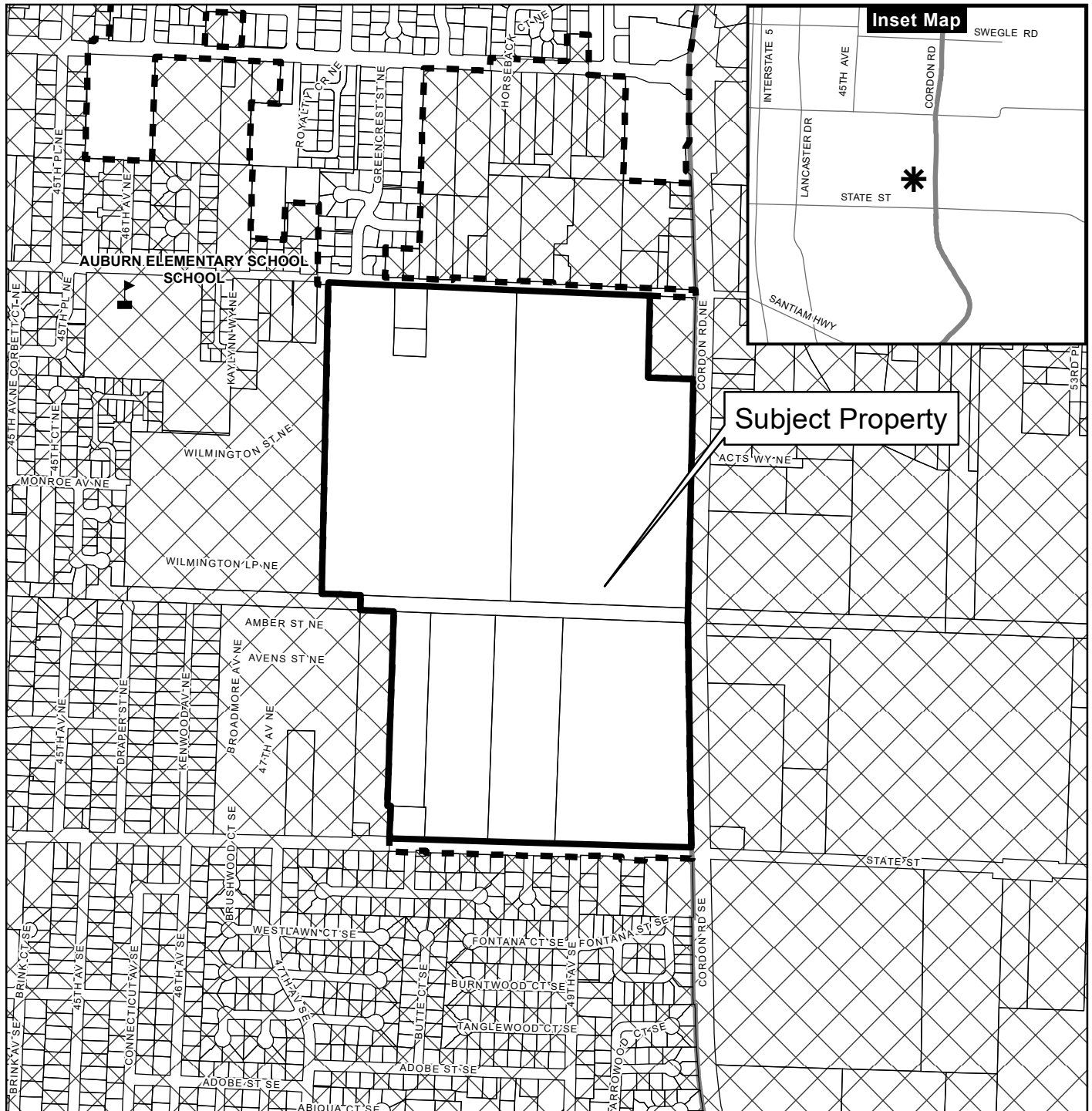


# Vicinity Map

## 255 Cordon Road NE, 4800-4900 Block of State Street and 4700-4800 Block of Auburn Road NE



### Legend

- Taxlots
- Urban Growth Boundary
- City Limits
- Outside Salem City Limits
- Historic District
- Schools

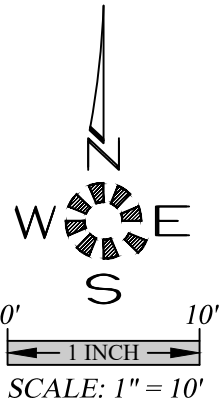
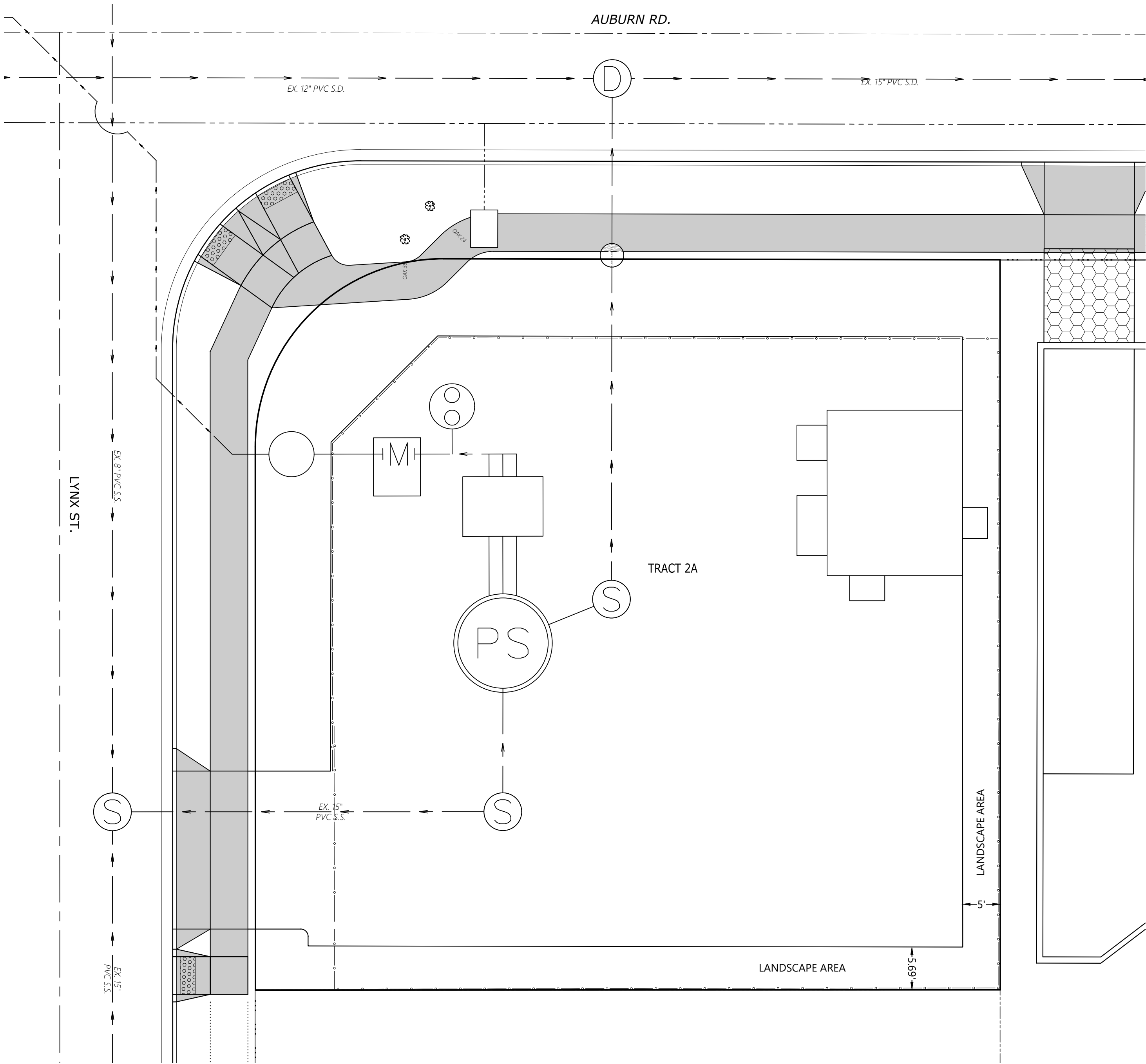
Parks

**CITY OF Salem**  
AT YOUR SERVICE  
Community Development Dept.

This product is provided as is, without warranty. In no event is the City of Salem liable for damages from the use of this product. This product is subject to license and copyright limitations and further distribution or resale is prohibited.

0 100 200 400 Feet





NO CHANGES, MODIFICATIONS  
OR REVISIONS TO BE  
MADE TO THESE DRAWINGS  
WITHOUT WRITTEN  
AUTHORIZATION FROM THE  
DESIGN ENGINEER.  
DIMENSIONS & NOTES TAKE  
PRECEDENCE OVER  
GRAPHICAL REPRESENTATION.

UTL Tract2A  
Design: M.D.G.  
Drawn: D.G.G.  
Checked: J.J.G.  
Date: JULY 2020  
Scale: AS SHOWN  
As-Built: ----



JOB # 7041

1/1

PUMP STATION SITE  
TRACT 2A

EAST PARK ESTATES  
A P.U.D.  
PHASE 2

MULTI/TECH  
ENGINEERING SERVICES, INC.  
1155 13th ST., S.E. SALEM, OR. 97302  
PH. (503) 363-5927 FAX (503) 364-7560  
www.mtengineering.net office@mtengineering.net



## GENERAL LANDSCAPE NOTES:

### General:

- All local, municipal, state, and federal laws regarding uses, regulations, governing or relating to any portion of the work depicted on these plans are hereby incorporated into and made part of these specifications and their provision shall be carried out by the Contractor. The Contractor shall at all times protect the public throughout the construction process.
- The Contractor shall carefully correlate construction activities with earthwork contractor and other site development.
- The Contractor shall verify drawing dimensions with actual field conditions and inspect related work and adjacent surfaces.
- The Contractor shall verify the accuracy of all finish grades within the work area. The Contractor shall report to the Landscape Design & Consultants LLC (LDC) or Owner all conditions which prevent proper execution of this work.
- The exact location of all existing utilities structures and underground utilities, which may not be indicated on the drawings, shall be determined by the Contractor. The Contractor shall protect existing structures and utility services and is responsible for their replacement if damaged.
- Disturbance and impacts to existing native trees/shrubs shall be minimized to the greatest extent practicable.
- The Contractor shall keep the premises free from rubbish and debris at all times and shall arrange material storage to not interfere with the operation of the project. All unused material, rubbish, and debris shall be removed from the site.
- All plant material and planting supplies shall be warranted for a period of not less than one year from the completion date of installation. All replacement stock shall be subjected to the same warranty requirement as the original stock. Any damage due to replacement operations shall be repaired by the Contractor. At the end of the warranty period, inspections shall be made by LDC, Owner/General Contractor. All plant and lawn areas not in a healthy growing condition shall be removed and replaced with plants and turf cover of a like kind and size before the close of the next planting season.

### Grading / Erosion Control:

- The design and placement of the building on the site lends itself to minimal slope conditions with positive drainage being maintained around the entire building. In this case standard landscaping procedures of topsoil, lawn, and a two inch layer of bark mulch on all planting beds will be sufficient to control erosion. In the event site conditions change or there are Slopes / Bio Swale / Detention Ponds on the project with slopes greater than 30% Poly tight Jute Netting shall be installed with anchoring pins as per manufactures recommendations prior to planting. Recommend DeWitt PJN4216 Erosion Control Poly Jute Netting and DeWitt anchor pins or approved equal.
- Seed recommendation is Pro Time 700 Low Profile or approved equal over the jute netting at a rate of 2 lbs. per 1000 sq. feet. The address of Pro Time is 1712 SE Ankeny, Portland OR 97214. Phone 503-239-7518. There email is [info@protimeawnseed.com](mailto:info@protimeawnseed.com)
- The work limits shown on this plan shall clearly be marked in the field prior to construction. No disturbance beyond the work limits shall be permitted.
- Grading shall be performed during optimal weather conditions.
- Erosion control measures shall be constructed in conjunction with all clearing and grading activities, and in such a manner as to ensure that sediment and sediment-laden water does not enter the drainage system or violate applicable water standards
- Prior to the commencement of construction activities, Contractor shall place orange construction fencing around perimeters of construction impact areas, and sediment fencing at downhill portions of the site. Contractor is responsible for proper installation, maintenance, replacement, and upgrading of all erosion and sediment control measures, in accordance with local, state, and federal regulations.

### Plant Material:

- Contractor shall verify all plant & tree quantities with LDC or Owner prior to construction.
- In the event of a discrepancy between plants materials listed on the drawings, the drawings shall govern the plant species and quantities required.
- Plant material shall be first quality stock and shall conform to the code of standards set forth in the current edition of the American Standards for Nursery Stock sponsored by the American Association of Nurserymen, Inc. (AAN)
- Species and variety as specified on the drawings and delivered to the site shall be specified true to there genus, species and variety and as defined within the current edition International Code of Nomenclature for Cultivated Plants.
- Obtain freshly dug, healthy, vigorous plants nursery-grown under climatic conditions similar to those in the locality for the project for a minimum of two years. Plants shall have been lined out in rows, annually cultivated, sprayed, pruned, and fertilized in accordance with good horticultural practice. All container plants shall have been transplanted or root pruned at least once in the past three years. Balled-and-burlapped (B&B) plants must come from soil which will hold a firm root ball. Heeled in plants and plants from cold storage are not acceptable.
- Planting stock shall be well-branched and well-formed, sound, vigorous, healthy, free from disease, sun-scaled, windburn, abrasion, and harmful insects or insect eggs; and shall have healthy, normal, unbroken root systems. Deciduous trees and shrubs shall be symmetrically developed, uniform with straight trunks or stems, and free from objectionable disfigurements. Evergreen trees and shrubs shall have well-developed symmetrical tops with typical spread of branches for each particular species or variety. Only vines and ground cove plants well-established shall be used. Plants budding into leaf or having soft growth shall be sprayed with an anti-desiccant when authorized, adjustments of contract amount (if any) will be made by change order.
- Contractor shall not make substitutions of plant materials. If required landscape material is not obtainable, submit proof of non-availability and proposal for use of equivalent material. When authorized, adjustments of contract amount (if any) will be made by change order.
- Plant sizes and grading shall conform to the latest edition of American Standard for Nursery Stock as sponsored by the American Association of Nurserymen Inc. (AAN)
- All vegetation shown on this plan shall be maintained in a healthy and vigorous growing condition throughout the duration of the proposed use. All vegetation not so maintained shall be replaced wit new vegetation at the beginning of the next growing season.

### Planting:

- Planting shall be installed between March 1<sup>st</sup> to April 30<sup>th</sup> or between October 1<sup>st</sup> to November 30<sup>th</sup>. If planting is installed outside these times frames, additional measures maybe needed to ensure survival and shall be pre-approved by the owner.
- Plant material shall be transported to the sit in a timely manner to minimize on-site storage. Where storage is required, all plants shall be kept moist and shaded.
- Plant stock shall be handled in a manner that will not break, scrape, or twist any portion of the plant. Protect plants at all times from conditions that can damage the plant (e.g., sun, wind, freezing conditions).

- Provide the following clearance for planting of trees where applicable:

Maintain 30 feet vision triangles at all intersections and corners  
5 feet from all street/parking lot light standards  
10 feet from fire hydrants  
5 feet from all utility vaults, meter boxes, etc.

- No trees or shrubs shall be planted on existing or proposed utility lines.
- All shrub beds shall receive a minimum 2" layer of bark mulch evenly applied immediately after panting is completed. All plant beds shall drain away from buildings.
- Excavate plant pits for shrubs and trees as follows:  
Container stock: width = 2 times the container diameter, depth = container depth.  
Bare root stock: width = 2 times the widest diameter of the root, depth = of root system.  
B & B: width = 2 times ball diameter, depth = ball depth.
- Scarify sides and bottom of plant pits to roughen surfaces.
- Place plants plumb in the pit. Backfill with native soil or top soil mixture to the original plant soil line, and tap solidly around the ball and roots. Water plants immediately after planting if soil is not saturated to the surface.

### Lawn Areas /Hydro-Seeding/Sod:

- All lawn area shall be seeded unless otherwise directed by Owner to install Sod. Seed or Sod shall be procured through Kuenzi Turf Nursery. Seed or Sod shall be Rhizomatous Tall Fescue (RTF). Seed mix shall be applied at a rate of 10 lbs. per 1000 sq. feet. Contact Kuenzi Turf Nursery at (503)585-8337 or approved equal.
- All areas shown on the plan shall be seeded between March 1<sup>st</sup>, and May 1<sup>st</sup>, or between September 1<sup>st</sup> and October 15<sup>th</sup>.
- Scarify soil surface to a depth of 3 inches, to ensure adequate seed contact with soil.
- Prior to seeding, clearly delineate seeding limits using flags or non-toxic paint.
- Hydro-seed application rate shall be 60 lbs. per 100 gallons of hose work or 75 lbs. per 100 gallons of tower work
- If, at the end of one complete growing season, the planted and seeded area fail to exhibit well-established plant communities, or exhibit patchiness in the patterns of vegetative cover, supplemental seeding and planting shall occur.
- Seeding of slopes greater than 30% shall be done by Hydro Seeding using a seed mix of Pro Time 700 Low Profile or approved equal at a rate of 2 lbs. per 1000 sq. feet.

### Top Soil Mixture:

- A 2" to 4" layer of garden care compost, mushroom compost or similar material sterilized at 105 degrees Fahrenheit shall be incorporated into the existing soil prior to planting and seeding/sod lawns.  
Incorporate into existing soil prior to planting the following fertilizers at a rate specified per 1000 sq. ft. of planting area.  
20 lbs. 10-6-4 50% Slow Release  
30 lbs. 38-0-0 Nitroform  
10 lbs. Iron Sulfate 21%  
20 lbs. 0-18-0 Super Phosphate  
25 lbs. Dolomite Lime  
10 lbs. 13-0-11 Potassium Nitrate

### Bark Mulch:

- All shrub beds shall receive a minimum 2" layer of fine hemlock or fir bark mulch evenly applied immediately after panting is completed. All plant beds shall drain away from buildings.

### Poly Jute Netting:

- Tight net Poly Jute Netting shall be installed on Bio Swales/Detention Ponds/Vegetated Swale and Rain Gardens as a soil stabilizer and erosion control agent. Jute Netting shall be installed with anchoring pins as per manufactures recommendations prior to planting. Recommend DeWitt PJN4216 Erosion Control Poly Jute Netting and DeWitt anchor pins or approved equal.

### Bio Swales/Detention Ponds/Vegetated Swales:

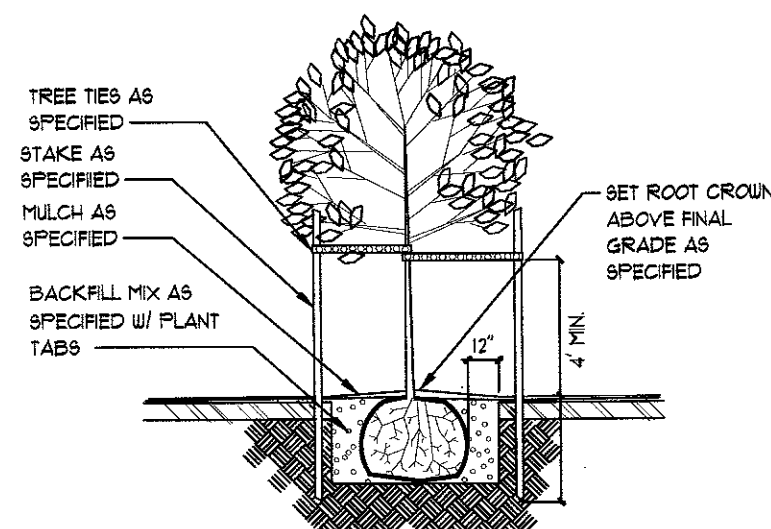
- Bark Mulch shall not be applied to Bio Swales/Detention Ponds or Vegetated Swales.

### Weed Control Agent:

- Apply casoron as a weed control agent after planting as per manufactures specified recommendations around building or approved equal.

### Non-Native Plant Species:

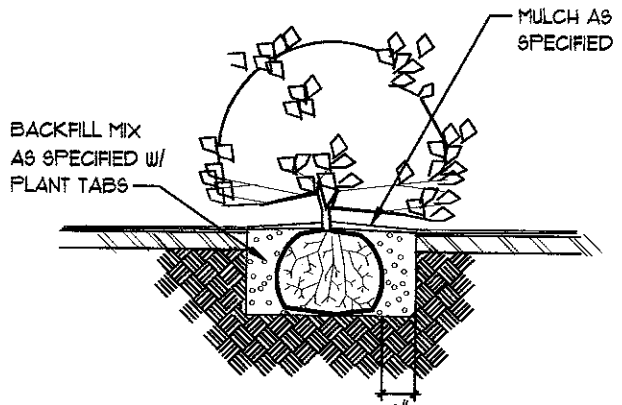
- All non-native, invasive plant species shall be removed from the site.



- NOTES:
- CUT AND REMOVE ALL ENDINGS FROM THE TOP AND SIDES OF THE ROOT BALL PRIOR TO BACKFILLING
  - REMOVE STAKES AND TIES ONE YEAR AFTER PLANTING

### DECIDUOUS TREE PLANTING DETAIL

NOT TO SCALE



- NOTES:
- CUT AND REMOVE ALL ENDINGS FROM THE TOP AND SIDES OF THE ROOT BALL PRIOR TO BACKFILLING
  - REMOVE STAKES AND TIES ONE YEAR AFTER PLANTING

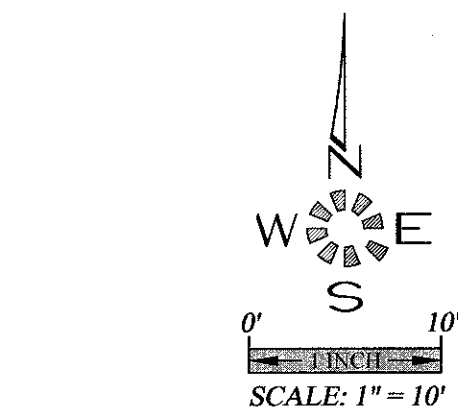
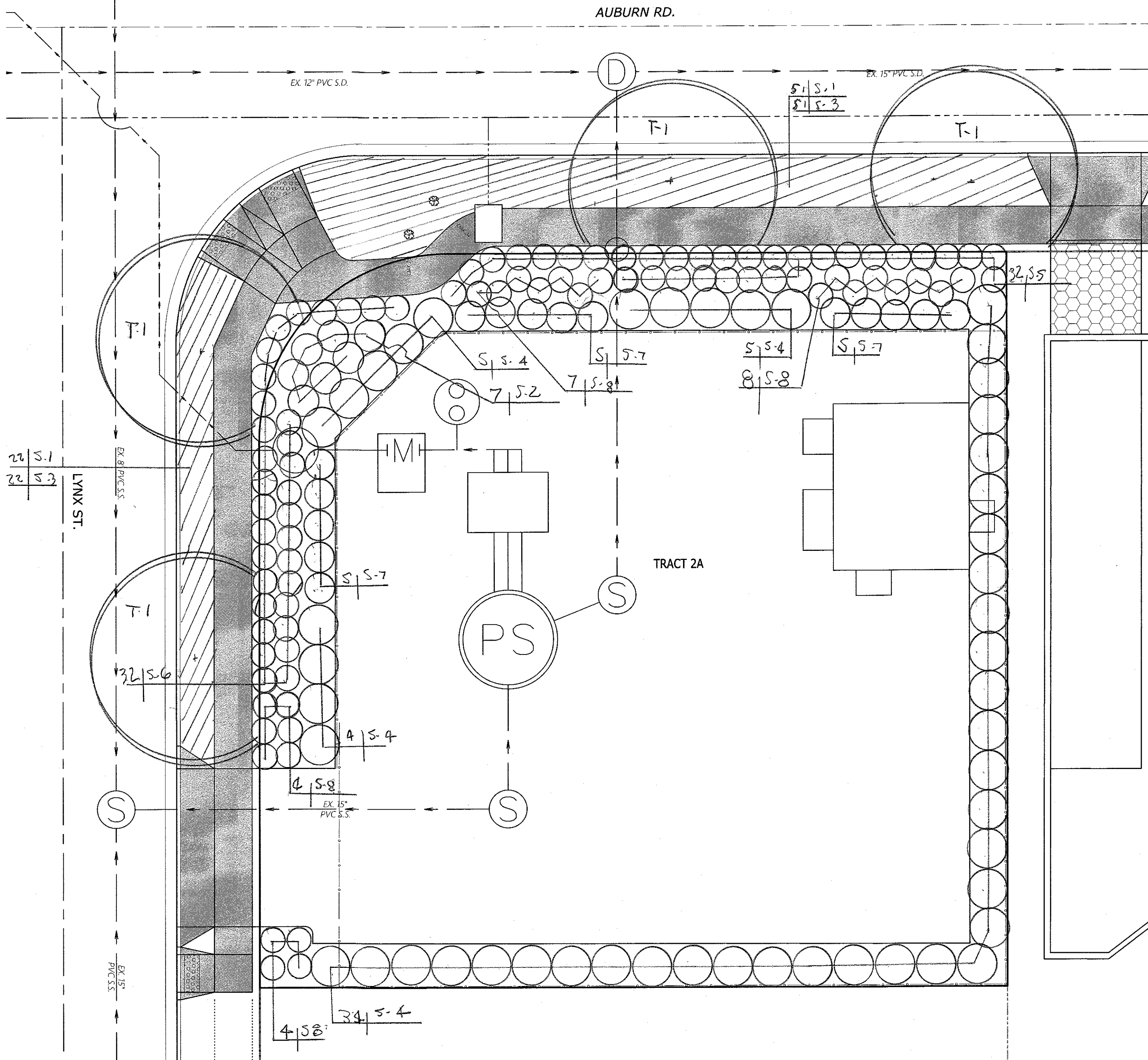
### SHRUB PLANTING DETAIL

NOT TO SCALE

## PUMP STATION PLANT PALETTE

QTY.	SYM	BOTANICAL NAME	COMMON NAME	SIZE	CONDITION	REMARKS
			<b>TREES</b>			
4	T-1	Ginkgo biloba 'Princeton Sentry'	Princeton Sentry Ginkgo	1 1/2"- 2" cal.	B & B	6' Standard
			<b>SHRUBS</b>			
73	S-1	Festuca glauca Elijah Blue	Elijah Blue Festuca Grass	1 gal.	cont.	Planted 3' o/c
7	S-2	Daphne ordora	Winter Daphne	3 gal.	cont.	Full
73	S-3	Mahonia repens	Creeping Mahonia	1 gal.	cont.	Planted 3' o/c
48	S-4	Ligustrum japonicum Texanum	Texas Wax-Leaf Privet	5 gal.	cont.	Full
32	S-5	Pennisetum alopecuroides Hameln	Dwarf Fountain Grass	3 gal.	cont.	Full
32	S-6	Pennisetum setaceum 'Purpureum'	Purple Fountain Grass	3 gal.	cont.	Full
15	S-7	Philadelphus Snowbelle	Snowbelle Mock Orange	3 gal.	cont.	Full
23	S-8	Spiraea japonica 'Double Pink'	Double Pink Spirea	3 gal.	cont.	Full

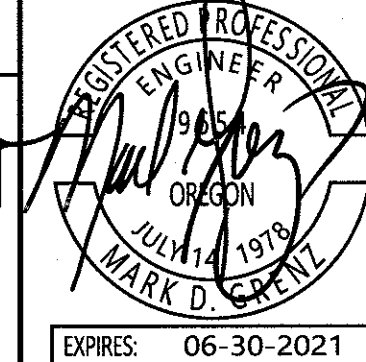
CONTRACTOR TO VERIFY ALL QUANTITIES OF PLANT MATERIALS WITH LANDSCAPE DESIGN & CONSULTANTS PRIOR TO INSALLATION  
PLANT MATERIAL SUBSTITUTIONS MAY BE MADE BY THE OWNER FOR PLANT MATERIALS OF SIMILAR HABIT, FLOWERING CHARACTERISTIC  
AND/OR STRUCTURE OF GROWTH DUE TO AVAILABILITY, WATER, SOIL, AND SUN REQUIREMENTS.



LANDSCAPE & IRRIGATION DESIGN BY:  
**LANDSCAPE DESIGN  
&  
CONSULTANTS LLC**  
Doing business since 1985  
620 WORMWOOD ST. S.E. SALEM, OR 97306 PHONE: (503) 551-8590

NO CHANGES, MODIFICATIONS  
OR REPRODUCTIONS TO BE  
MADE TO THESE DRAWINGS  
WITHOUT WRITTEN  
AUTHORIZATION FROM THE  
DESIGN ENGINEER.  
DIMENSIONS & NOTES TAKE  
PRECEDENCE OVER  
GRAPHICAL REPRESENTATION.

Design: M.D.G.  
Drawn: D.G.G.  
Checked: J.J.G.  
Date: JULY 2020  
Scale: AS SHOWN  
As-Built: \_\_\_\_\_



**L1.1**

**PUMP STATION  
LANDSCAPE PLAN**

**EAST PARK ESTATES  
A P.U.D.  
PHASE 2**

**MULTI/TECH**  
ENGINEERING SERVICES, INC.  
1155 13TH ST. SE SALEM, OR. 97302  
PH. (503) 363 - 9227 FAX (503) 364-1260  
[www.mtengineering.net](http://www.mtengineering.net) office@mtengineering.net