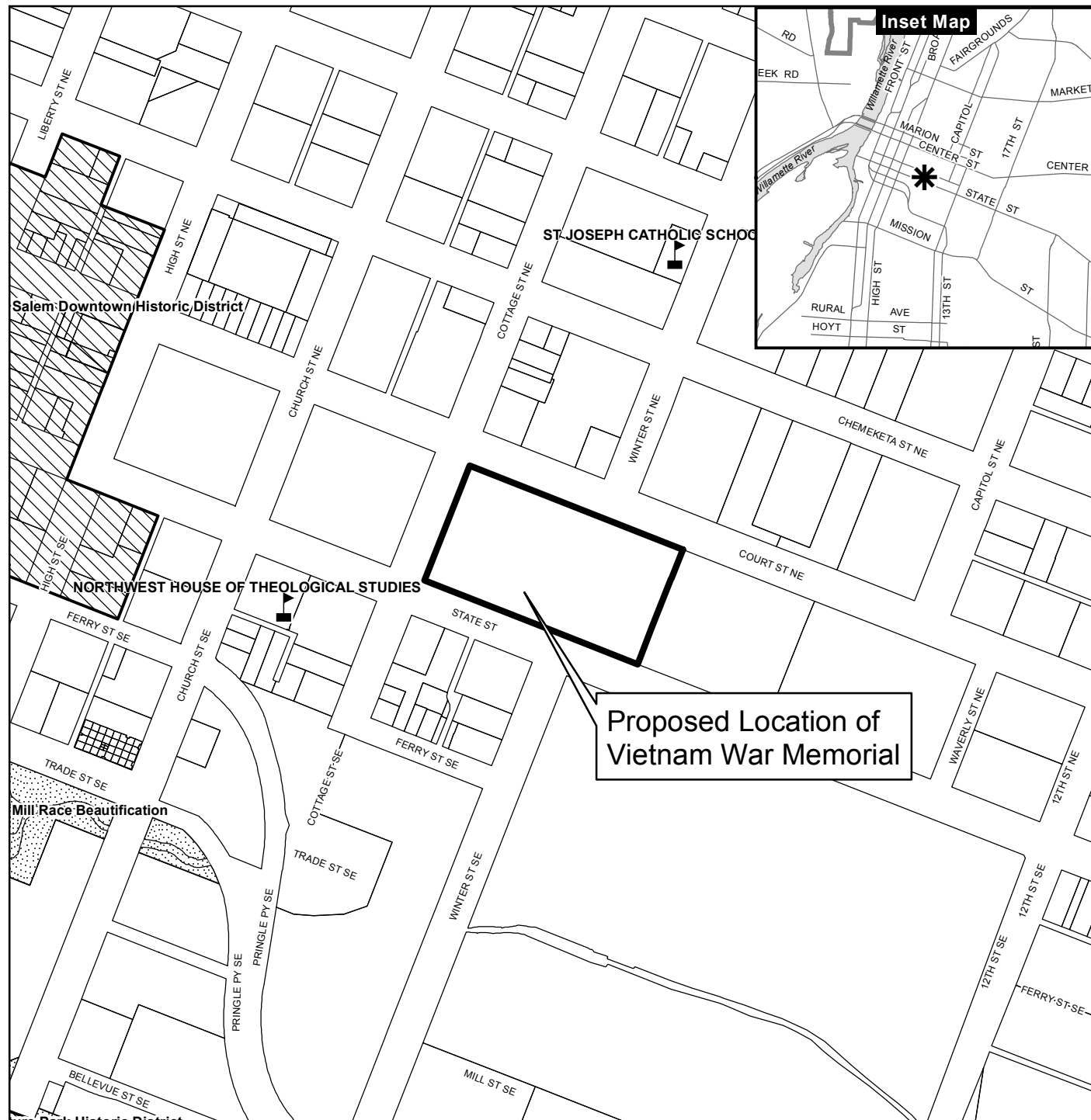


# Vicinity Map Wilson Park 900 Court Street NE (073W27AA00300)



## Legend

- Taxlots
- Urban Growth Boundary
- City Limits
- Outside Salem City Limits
- Historic District
- Schools

Parks

**CITY OF Salem**  
AT YOUR SERVICE  
Community Development Dept.

This product is provided as is, without warranty. In no event is the City of Salem liable for damages from the use of this product. This product is subject to license and copyright limitations and further distribution or resale is prohibited.

0 100 200 400 Feet



Case No. \_\_\_\_\_

**Historic Alteration Review Worksheet**

Site Address: \_\_\_\_\_

Resource Status: Contributing ☐ Non- Contributing ☐ Individual Landmark ☐Type of Work Activity Proposed: Major ☐ Minor ☐Chose One: Commercial District ☐ Individual Resource ☐ Public District ☐  
Residential District ☐ Sign ☐**Replacement, Alteration, Restoration or Addition of:****Architectural Feature:**

- ☐ Awning
- ☐ Door
- ☐ Exterior Trim, Lintel
- ☐ Other architectural feature \_\_\_\_\_
- ☐ Roof/Cornice
- ☐ Masonry/Siding
- ☐ Storefront
- ☐ Window(s) Number of windows: \_\_\_\_\_

**Landscape Feature:**

- ☐ Fence
- ☐ Streetscape
- ☐ Other Site feature (describe) \_\_\_\_\_

**New:**

- ☐ Addition
- ☐ Accessory Structure
- ☐ Sign
- ☐ Mural
- ☐ Accessibility Ramp
- ☐ Energy Improvements
- ☐ Mechanical Equipment
- ☐ Primary Structure

Will the proposed alteration be visible from any public right-of-way? ☐ Yes ☐ No

Project's Existing Material: \_\_\_\_\_ Project's New Material: \_\_\_\_\_

**Project Description**

Briefly provide an overview of the type of work proposed. Describe how it meets the applicable design criteria in SRC Chapter 230. Please attach any additional information (i.e., product specification sheets) that will help staff and the HLC clearly understand the proposed work:

---



---



---



---



---



---

Signature of Applicant \_\_\_\_\_

Date Submitted/Signed \_\_\_\_\_

## **Written Statement Addressing Applicable Approval Criteria (SRC 230)**

9.20.20

Mike Abbaté, Abbaté Designs LLC

A Citizen Committee and non-profit organization has worked for three years with Oregon Senators and Representatives and Oregon State Parks to identify the most optimal place on the Capitol Grounds to construct a new Memorial recognizing the honor and sacrifice of Oregon's Vietnam Veterans, and to ensure it is a thoughtful, respectful and beautiful enhancement to Willson Park. The Memorial site, at the SW Corner of Willson Park, lies within the Oregon State Capitol Historic District (SRC Sec 230.200(d))

As this is new construction, and not a building, we have elected to follow the applicable Guidelines identified in Sec 230.065:

**e) Changes that have taken place to a historic resource over the course of time are evidence of the history and development of a historic resource and its environment and should be recognized and respected. These changes may have acquired significance in their own right, and this significance should be recognized and respected.**

Willson Park has changed over time, most recently with new symmetrical walkways installed by OPRD to better connect the WWII Memorial to the other historic features in the Park. The Vietnam Memorial has been designed to incorporate the new path geometry developed by OPRD.

Another recent change to Willson Park was the addition of the WWII Memorial itself in 2011. The proposed Vietnam War Memorial mirrors the location of the WWII Memorial black granite wall in the NW corner of the park with a black granite "Column Wall" on the SW corner to reflect the symmetrical balance of the Park.

**(f) Additions and alterations to a historic resource shall be designed and constructed to minimize changes to the historic resource.**

No significant features identified in Table 230-3 will be affected by the installation of the Vietnam War memorial. In fact, the symmetrical geometry of Willson Park will be enhanced by the placement of a similar wall on the south side of the axis.

The proposed Gold Star Families component can be installed in one of two locations, depending on the preference of OPRD: 1) in one of the elliptical alcoves on the north-south walkway connecting the WWII and Vietnam Memorials or 2) in the central ellipse between the two memorials. It would only be constructed in the central ellipse if OPRD chooses to relocate the Parade of Animals Sculpture.

**(g) Additions and alterations shall be constructed with the least possible loss of historic materials and so that significant features are not obscured, damaged, or destroyed.**

The proposed Vietnam War Memorial will retain the existing landscape character of this SW corner of Willson Park with its large canopy trees and open landscaping. Great care is being taken to preserve, protect and integrate the existing large trees into the Memorial itself. All trees and sidewalks in the Cottage St. and State St. rights of way will similarly be protected. Materials found elsewhere in the Park such as black granite, basalt stone and bronze are repeated in the new Memorial.

# MEMO



To: Kimberli Fitzgerald, AICP, Historic Preservation Officer  
From: Mike Abbaté & Steve Bates  
Date: October 26, 2020  
Re: Response to Oct. 23, 2020 Completeness Review

---

We are hereby providing the additional information requested in your memo of Oct. 23, 2020.

## Written Statement

### A. Overview

A Citizen Committee and non-profit organization has worked for three years with Oregon Senators, Representatives, and Oregon State Parks to identify the most optimal place on the Capitol Grounds to construct a new Memorial recognizing the honor and sacrifice of Oregon's Vietnam Veterans, and to ensure it is a thoughtful, respectful and beautiful enhancement to Willson Park.

The proposed Oregon Vietnam War Memorial will be a place of reflection, commemoration and acknowledgement of the sacrifices by Oregon men and women during this pivotal time in the history of Oregon and our nation.

The Memorial site, at the SW Corner of Willson Park, opposite the existing WWII Memorial at the NW corner, lies within the Oregon State Capitol Historic District (SRC Sec 230.200(d))

- 1) The total square footage of the proposed development area is 0.64 acres (27,900 s.f.)
- 2) Specifications (l,w,h and material of memorial itself): The development area is approximately 180' in the east-west direction by 155' in the north-south direction, all on OPRD Park property. A detailed description of the sizes of each of the Memorial elements is listed Table 1, below.
- 3) Statement of existing material proposed for removal:  
In the Memorial development area, the following hardscape materials will be removed:
  - 6700 square feet of old existing concrete paving (much of it cracked and/or lifted).
  - 2 existing wooden benches at SW corner of memorial area (to be replaced with multiple benches throughout the memorial)
  - Trees:
    - a. The following trees will be retained and integrated into the overall Memorial plan:
      - 72" Redwood
      - 45" Blue Spruce
      - 40" Fir
      - 31" Cedar ("The Embracing Tree")
      - 27" Cedar
      - 21" Fir
      - 20" Fir





- (2) 14" Ash
- 12" Camperdown Elm
- 10" Poplar
- 10" Crabapple
- 7" Crabapple
- (2) 6" Crabapple
- b. The following trees will need to be removed:
  - 20" Elm (required to be removed to comply with OPRD's new Willson Park walkway plan)
  - 20" Pine
  - 16" Pine
  - 8" Norway Maple
  - 8" Crabapple
  - 6" Crabapple

## **B. Addressing Applicable Approval Criteria (SRC 230)**

As this is new construction, and not a building, we have elected to follow the applicable Guidelines identified in Sec 230.065:

**e) Changes that have taken place to a historic resource over the course of time are evidence of the history and development of a historic resource and its environment and should be recognized and respected. These changes may have acquired significance in their own right, and this significance should be recognized and respected.**

Willson Park has changed over time, most recently with new symmetrical walkways installed by OPRD to better connect the WWII Memorial to the other historic features in the Park. The Vietnam Memorial has been designed to incorporate the new path geometry developed by OPRD.

Another recent change to Willson Park was the addition of the WWII Memorial itself in 2011. The proposed Vietnam War Memorial mirrors the location of the WWII Memorial black granite wall in the NW corner of the park with a black granite "Column Wall" on the SW corner to reflect the symmetrical balance of the Park.

**(f) Additions and alterations to a historic resource shall be designed and constructed to minimize changes to the historic resource.**

No significant features identified in Table 230-3 will be affected by the installation of the Vietnam War memorial. In fact, the symmetrical geometry of Willson Park will be enhanced by the placement of a similar wall on the south side of the axis.

The proposed Gold Star Families component can be installed in one of two locations, depending on the preference of OPRD: 1) in one of the elliptical alcoves on the north-south walkway connecting the WWII and Vietnam Memorials or 2) in the central ellipse between the two memorials. It would only be constructed in the central ellipse if OPRD chooses to relocate the Parade of Animals Sculpture.

(g) Additions and alterations shall be constructed with the least possible loss of historic materials and so that significant features are not obscured, damaged, or destroyed.

The proposed Vietnam War Memorial will retain the existing landscape character of this SW corner of Willson Park with its large canopy trees and open landscaping. Great care is being taken to preserve, protect and integrate the existing large trees into the Memorial itself. All trees and sidewalks in the Cottage St. and State St. rights of way will similarly be protected. Materials found elsewhere in the Park such as black granite, basalt stone and bronze are repeated in the new Memorial.

### Specifications for Proposed New Memorial Elements

The following is a breakdown of the various constituent elements of the proposed Vietnam War Memorial, as indicated in the site plan below:



TABLE 1

Item No.	Element	Size	Materials	Notes
1	<b>Memorial Monument</b>	Columns are a mix of sizes: 12"x12", 18"x18", and 24"x24". Height ranges from 3' at the ends, increasing to 8' at the corner	Black Granite columns with names of deceased servicemen engraved on back side	This is a black granite "wall" made of spaced columns to mirror the WWII Memorial to the north
2	<b>Brothers Benches</b>	2' wide x 6' long x 18" high	Likely granite	These are benches for sitting and commemorate the 4 Oregon families that lost 2 sons in the war
3	<b>MIA/POW Stations</b>	24" x 36"	Engraved Granite Plaques: 1 for POWs & 1 or MIAs	These plaques will be embedded in the basalt stone wall surrounding the alcove along the walkway
4	<b>Nurses Station</b>	10' long x 6' wide x 5' high	Bronze Sculpture	Artwork on a raised granite pedestal celebrating the work of nurses and medics in the war
6	<b>Honor Station – Wetland Feature</b>	23' x 32'	Stormwater treatment facility	This element will treat stormwater runoff from the paved areas of the Memorial and will not have water in it otherwise
7	<b>A Soldier's Return</b>	7.5' long x 6.5" wide x 7.5' tall	Bronze Sculpture	This artwork features a soldier who will be first seen from behind as you enter the Memorial

8	<b>Meeting &amp; Gathering Station</b>	80' long x 40' wide	Paved plaza	This open paved area will accommodate group celebrations and remembrances
9	<b>Persian Gulf War Memorial</b>	24" x 36"	Engraved Granite Plaque	This plaque will be embedded in the basalt stone wall surrounding the alcove along the walkway
10	<b>Gold Star Families Memorial Monument</b>	16' long x 2.5' wide x 6' tall in an arc	Black Granite with Engraving	This is a Monument that has been designed by the Herschel Woody Williams Medal of Honor Foundation and installed in 49 US states and territories. For more info, see <a href="http://www.hwwmohf.org">www.hwwmohf.org</a>
11	<b>Purple Heart State Plaque</b>	24" x 36"	Engraved Granite Plaque	This plaque will be embedded in the basalt stone wall surrounding the alcove along the walkway

End of Memo

# City of Salem Historic Design Review – Major **Oregon Vietnam War Memorial**

Applicant: Oregon Parks & Recreation Department  
Agent: Vietnam War Memorial Fund  
Consultant: Abbaté Designs LLC



Application #20-115809

October 2, 2020



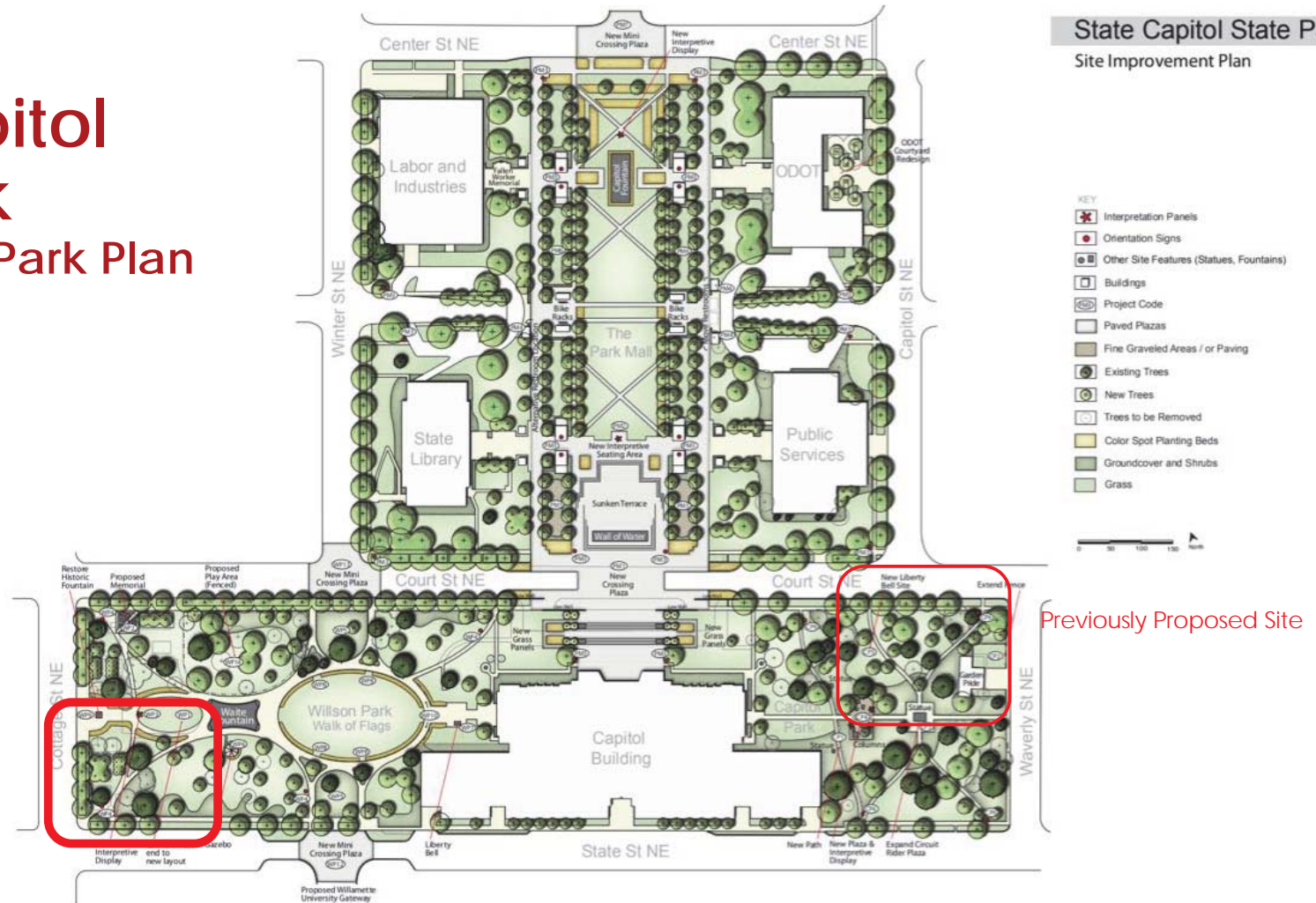
**Chris Havel** Associate Director, Oregon Parks & Recreation Department

**Steve Bates** President, Oregon Vietnam War Memorial Fund



# State Capitol State Park

## 2010 General Park Plan



10.02.20

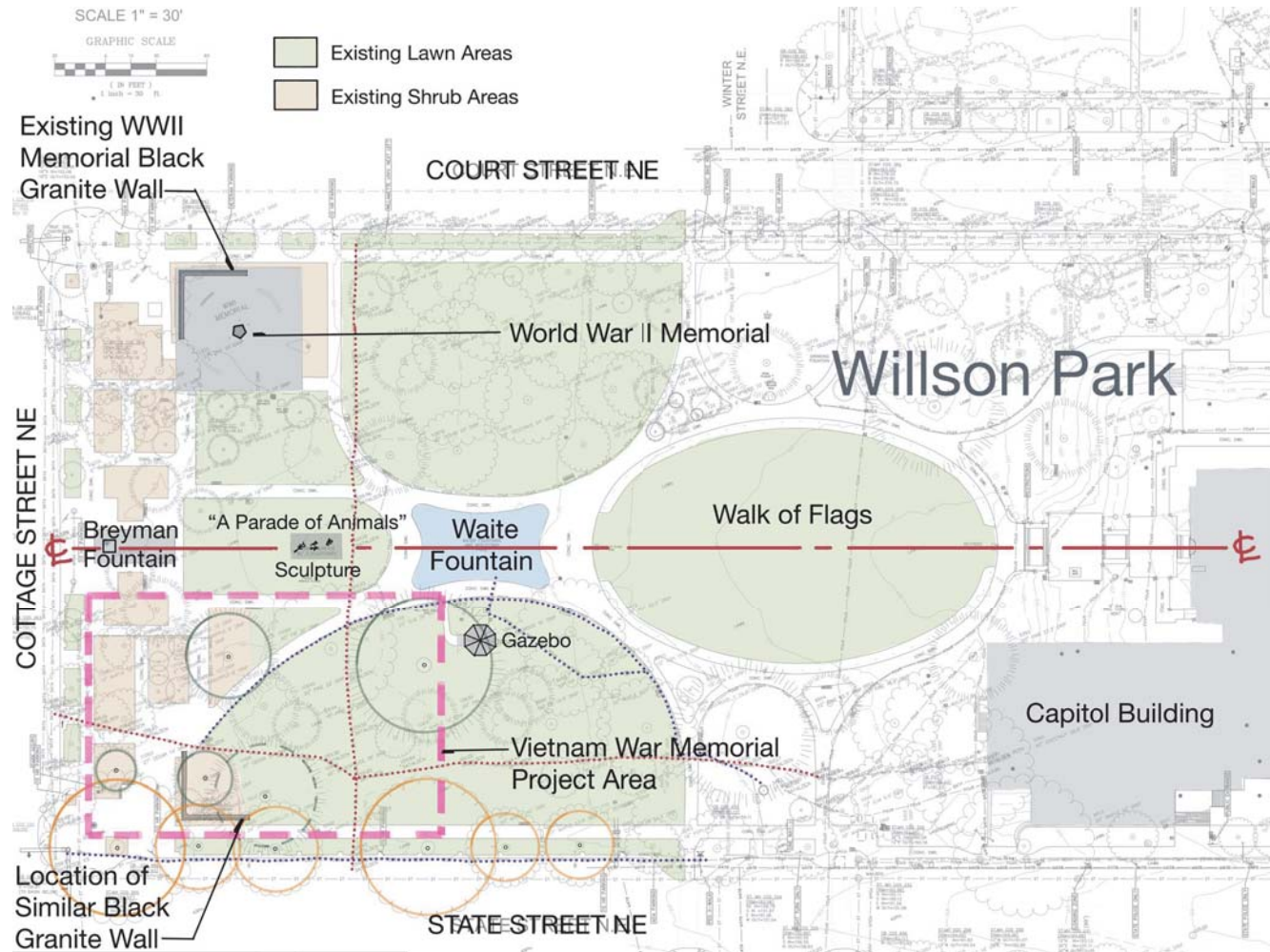




# Site Context

Willson Park has a symmetrical and axial geometry, with the centerline originating in the middle of the Capitol Rotunda, and extending west through the Walk of Flags, Waite Fountain and Breymann Fountain.

The proposed Vietnam War Memorial on the South is carefully placed to mirror the location of the existing World War II Memorial to the North



10.02.20



# Site Photos



Looking SE at existing WWII Memorial Site  
(from Court St. and Cottage St.)



Looking NE at current conditions at Vietnam War Memorial Site  
(from State St. and Court St.)

10.02.20





# Site Photos



Looking West along State Street NE Sidewalk



Looking E at Embracing Tree (Western Red Cedar)



10.02.20





# Site Photos



Looking N from VWM Site toward WWII Memorial



Looking S at VWM Site  
from WWII Memorial



Looking S at VWM Site from  
Breyman Fountain



10.02.20



# Site Photos



Looking SW at  
"Embracing Tree" Cedar  
(to be preserved)



Looking NE at Entry/Arrival to Vietnam War Memorial and  
60" London Plane Tree at corner of Cottage and State Streets



Looking S at Blue Atlas Cedar  
(to be preserved)

10.02.20





# Site Photos



Looking SW from  
Waite Fountain toward VVM Site



Looking W from Waite Fountain



Looking W across Waite Fountain



Looking NW from Waite  
Fountain toward WWII Memorial



10.02.20



# Design Objectives

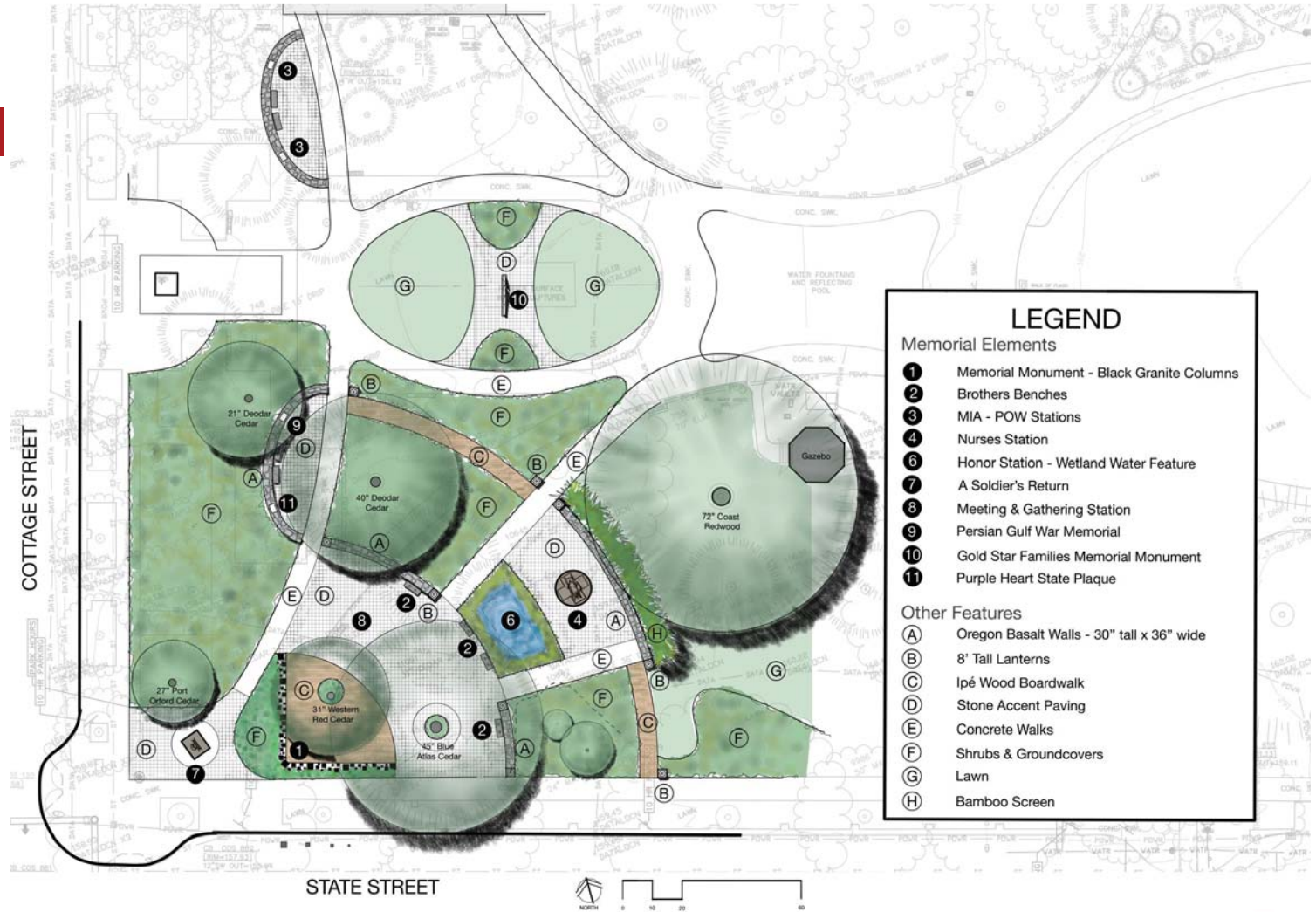
1. Create a place that is greater than the sum of its parts
2. Create a place of beauty, peace, and truth about the experiences of Veterans
3. Unify the various elements
4. Provide inspiration and reflection through evocative art
5. Provide educational information in ways that complement, rather than overwhelm, the art (providing both Inspiration and Education)
6. Encourage personal interactions with individual elements
7. Create places for both public gatherings and private reflections
8. Utilize long-lasting, low-maintenance materials and systems
9. Provide complete barrier-free access for all



10.02.20



# Memorial Plan:



10.02.20





# Design Concept:

## Comparing the Wars & the Oregon Capitol's Memorials

	WWII	Vietnam
WAR	Solid Public Support	Fractured Public Support
	Vets Welcomed Home	Vets Ignored or Insulted
	Moms & Dads	Sons & Daughters

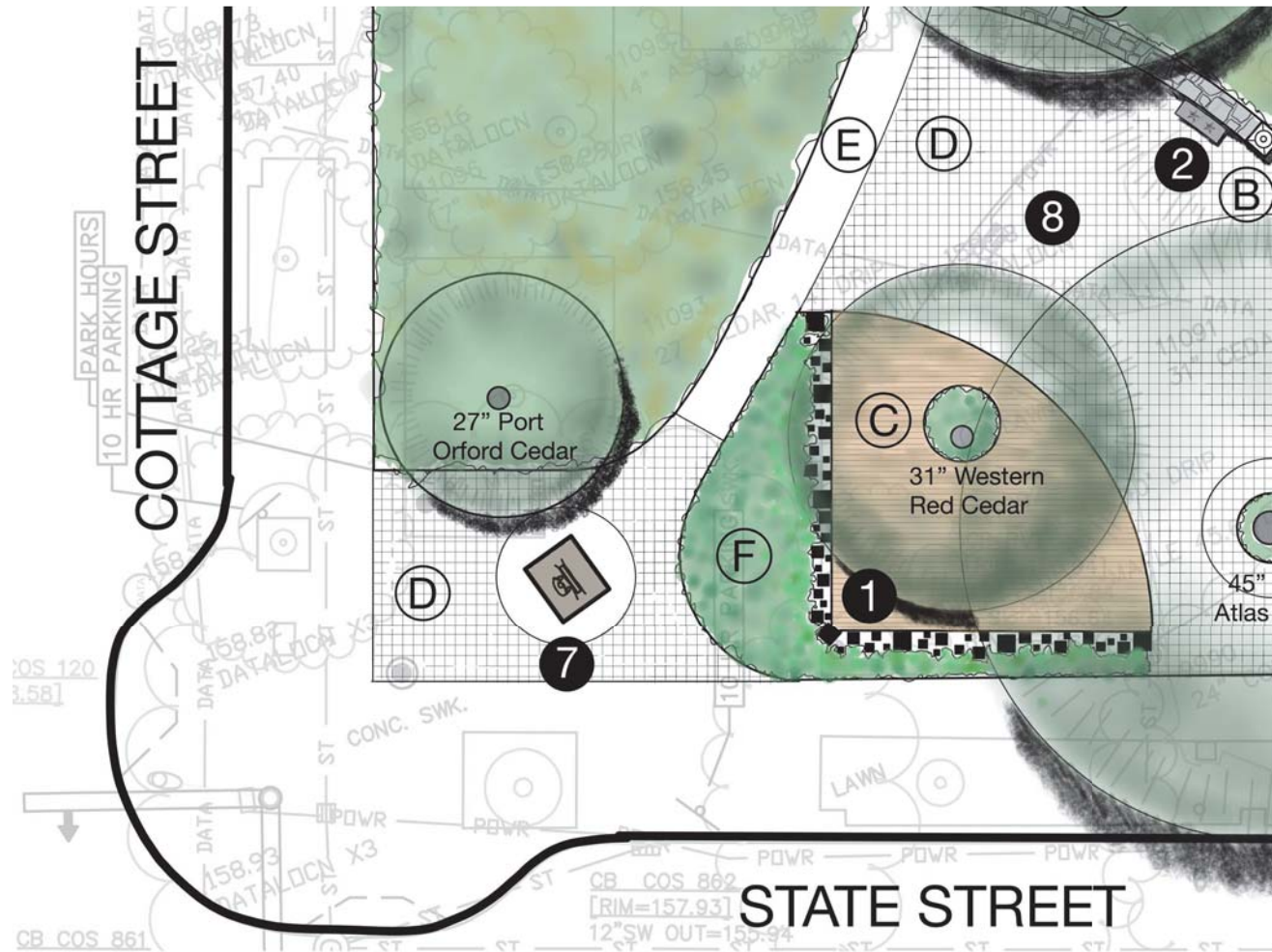
	WWII	Vietnam
MEMORIAL	Square Corners	Arcs & Curves
	No Nature	Embrace Nature
	Made of the World	Made of Oregon



10.02.20



# Schematic Design Plan: SW Corner



10.02.20





# Materials:



Oregon Basalt Walls

© Ipé Wood Deck

10.02.20



## Design Images: View at Memorial Entry @ Cottage & State Streets



10.02.20





## Design Images: View SE across Meeting & Gathering Plaza



10.02.20



## Design Images: View of Inscribed Column Wall with “Embracing Tree”



10.02.20





## Design Images: View SW with Nurses Sculpture and “Rain Paddy”



10.02.20



## Design Images: Overview looking SW



10.02.20



# Design Walkthrough Video:



Video performance may be improved by watching directly from the internet at:

<https://youtu.be/pWkHHUxORiY>

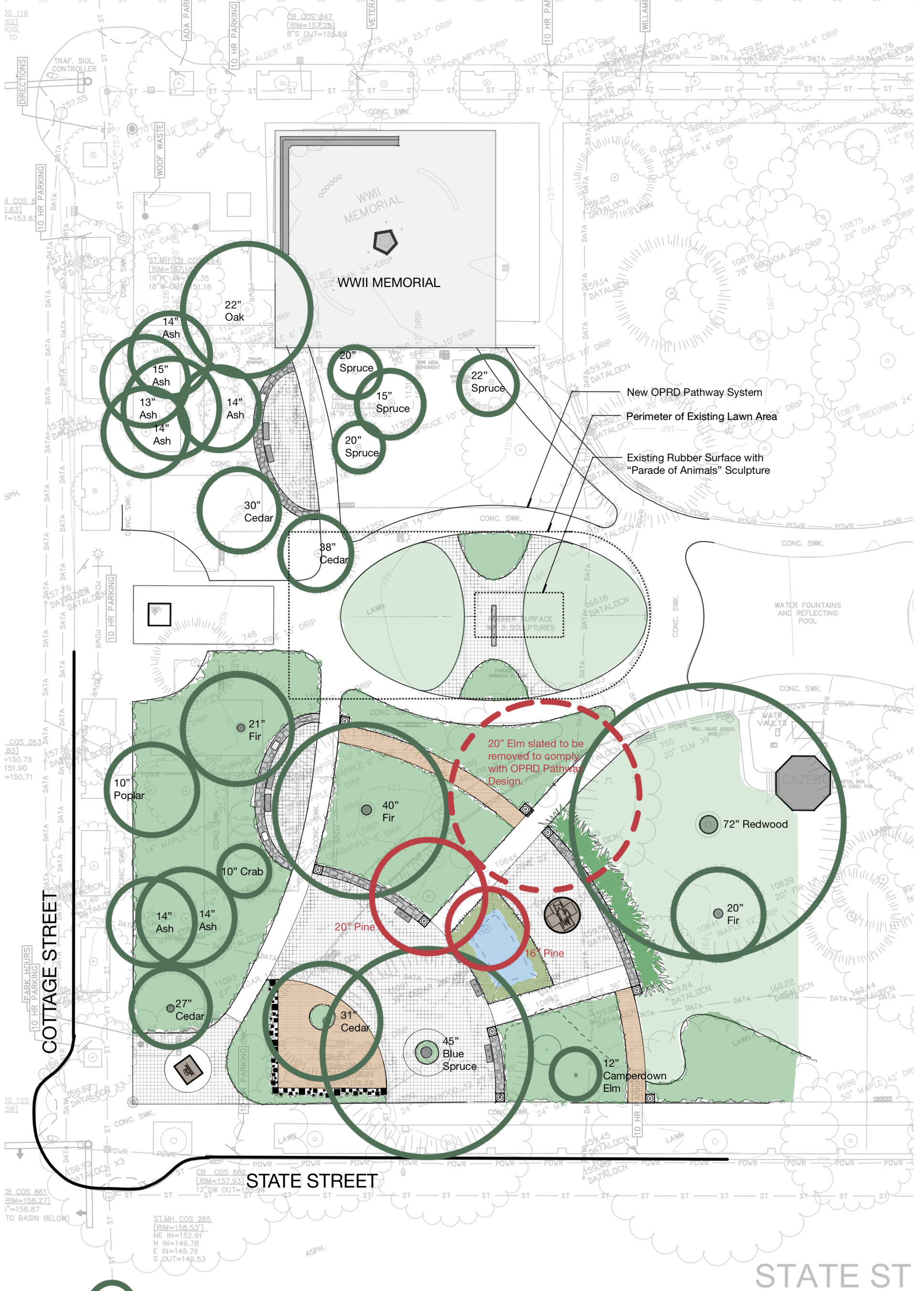
Make sure sound is turned on





10.02.20

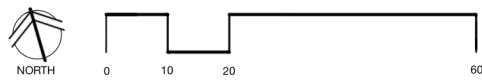






-  Existing trees to be protected and retained
-  Existing trees to be removed

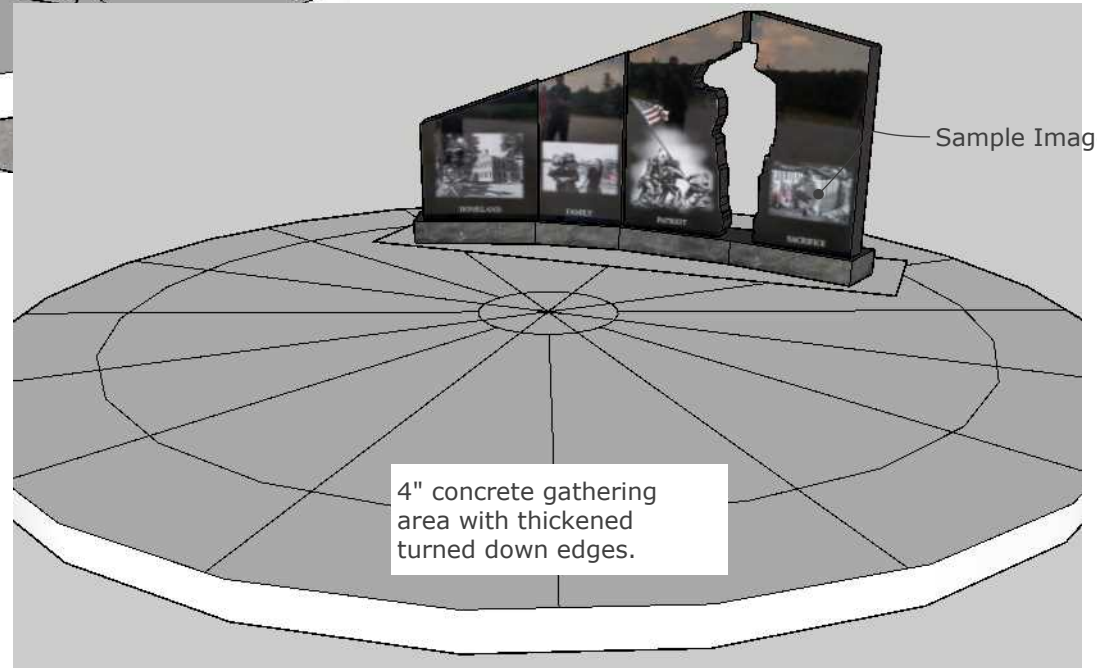
NOTE: All existing street trees along State and Cottage Streets will be protected and retained in place.



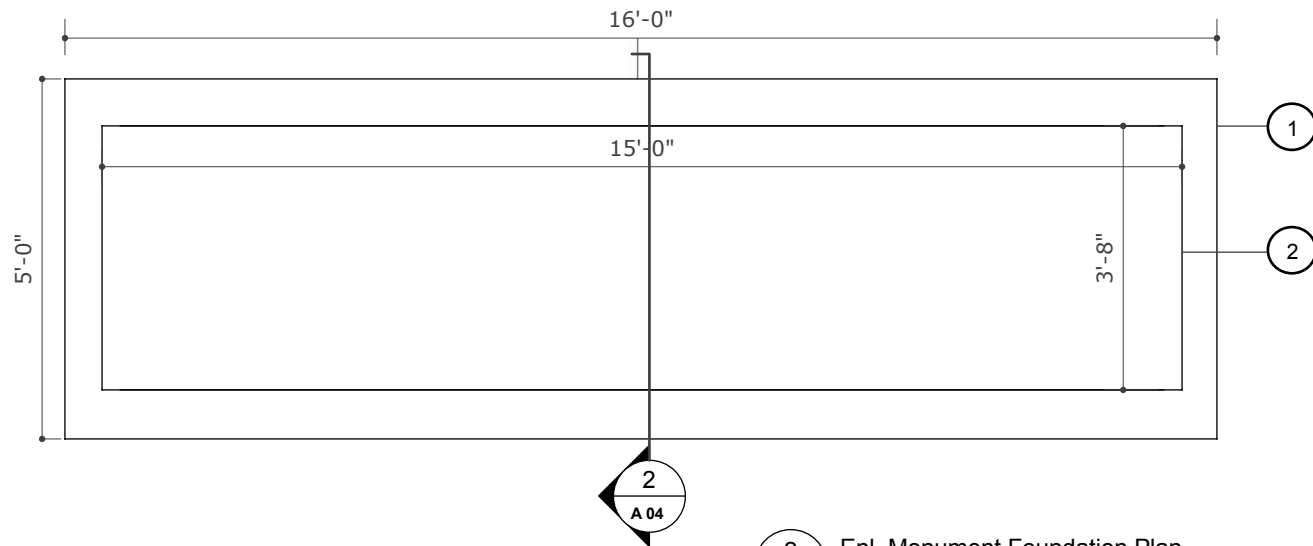




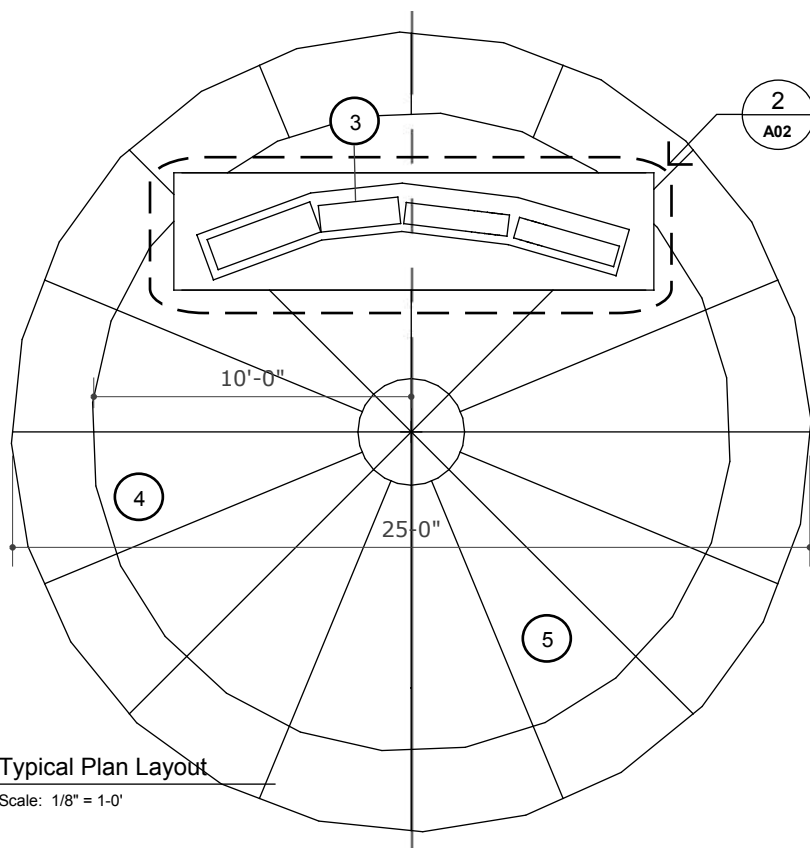
1 Isometric of Monument  
A01 Scale: NTS



2 Isometric of Monument  
A01 Scale: NTS



**2** Enl. Monument Foundation Plan  
A02 Scale: 3/8" = 1'-0"

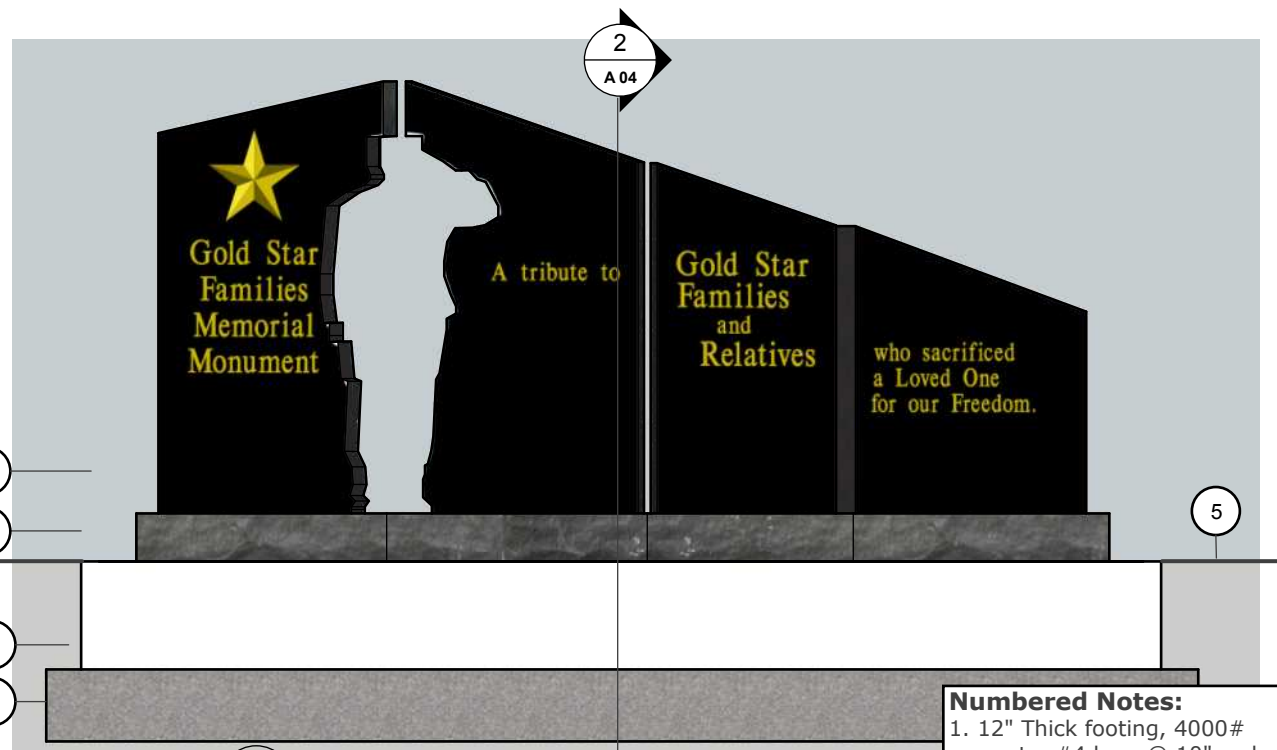
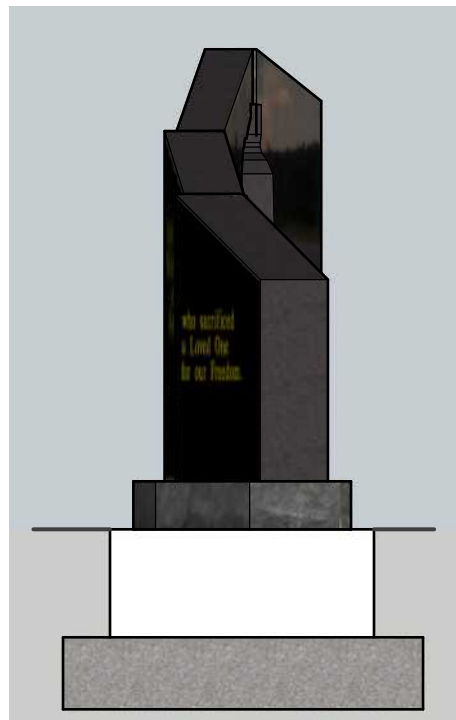


**1** Typical Plan Layout  
A02 Scale: 1/8" = 1'-0"

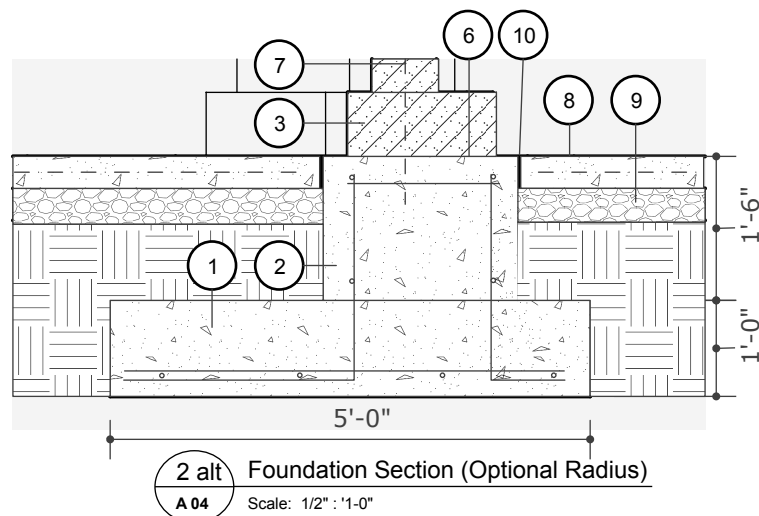
#### Numbered Notes:

1. 12" Thick footing, 4000# concrete. #4 bars @ 10" oc long direction, #4 bars at 16" oc short direction. #4 bent bars @ 32" oc.
2. 18" tall stem wall - 3'-8" wide. 2 rows of #4 bar long direction. 1 row #4 bars @ 16" oc in short direction. Top of radius stem wall must be completely flat to allow monuments to sit plumb.
3. Monument base to be placed by others. See Sheet 3.
4. 4" Concrete slab with light broom finish, tool joints as shown. Slope to drain. 4" min. stone base.
5. Arrangement of concrete gathering area may vary from site to site. Confirm configuration with owner. Provide similar concrete access to available sidewalk.

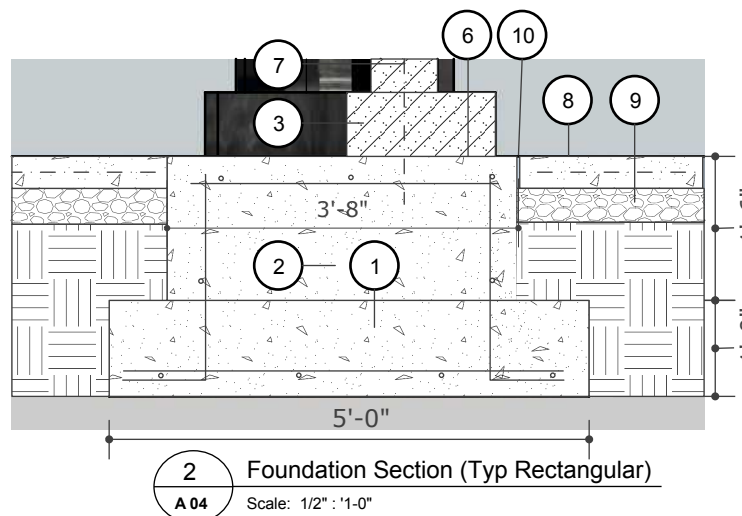




1 Monument Foundation Elevations  
A 04 Scale: 3/8" = 1' - 0"



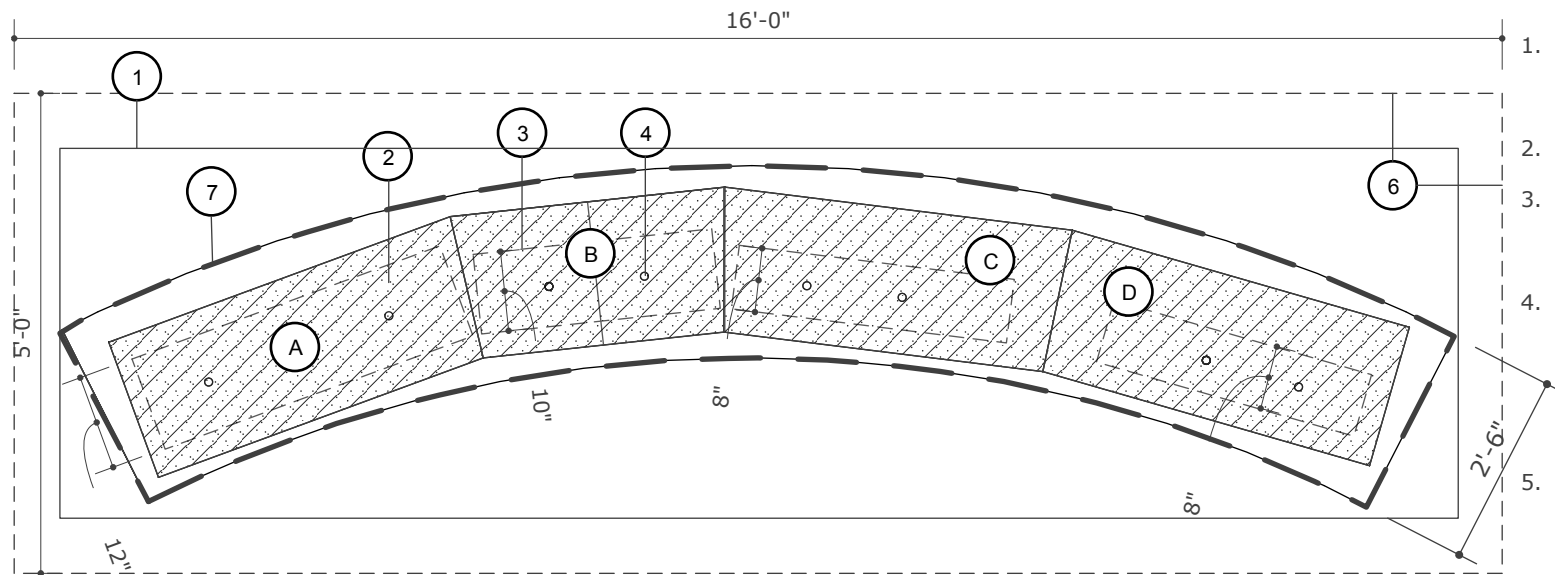
2 alt Foundation Section (Optional Radius)  
A 04 Scale: 1/2" = 1'-0"



2 Foundation Section (Typ Rectangular)  
A 04 Scale: 1/2" = 1'-0"

#### Numbered Notes:

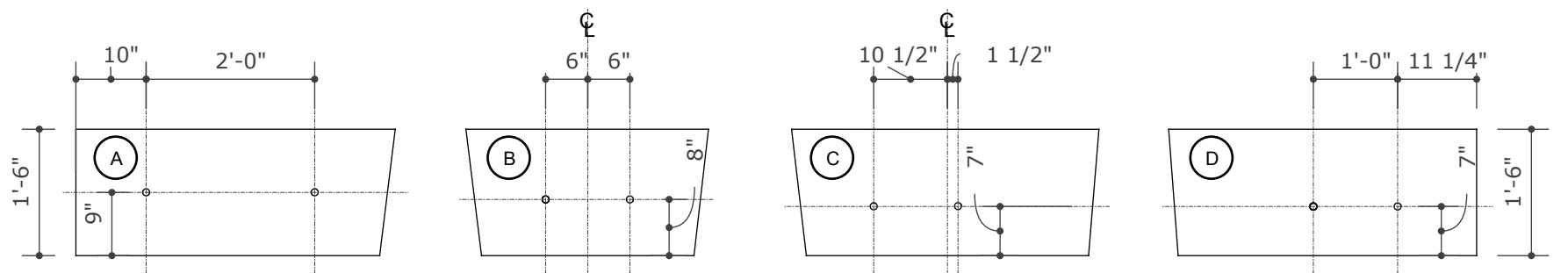
1. 12" Thick footing, 4000# concrete. #4 bars @ 10" oc long direction, #4 bars at 16" oc short direction. #4 bent bars @ 32" oc.
2. 18" tall stem wall - 2'-6" wide. 2 rows of #4 bar long direction. 1 row #4 bars @ 16" oc in short direction.
3. 8" Tall monument base (by others)
4. Laser etched monuments, images will vary from site to site (by others)
5. Grade line.
6. Top of stem wall must be completely flat to allow monuments to sit plumb.
7. Anchor Bar drilled into existing foundation and installed by Monument Company.
8. 4" Concrete slab with light broom finish, tool joints as shown. Slope to drain.
9. 4" min. stone base.
10. 1/2" exp jt with sealant at joints.



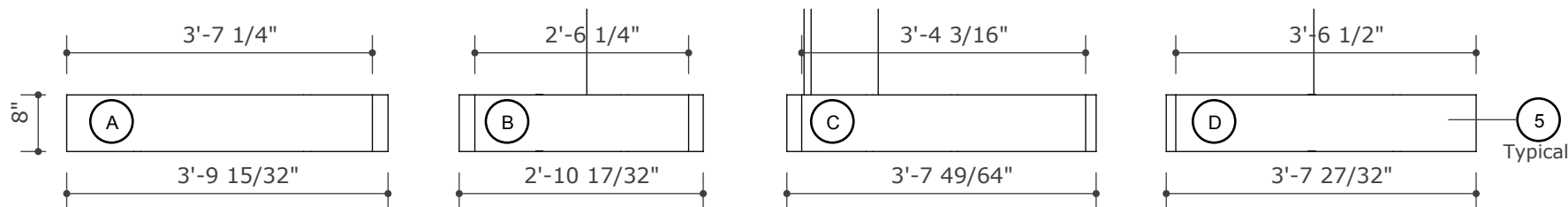
### Numbered Notes:

1. Top of stem wall below. (Standard Rectangle.) Must be perfectly level to place monument.
2. Shaded areas are monument bases.
3. Short dashed are location of vertical monuments to be placed on top of monument bases.
4. Holes in monument bases and vertical monuments are by monument stone provider. Monument stone installer will drill and epoxy vertical dowels after these bases are field located.
5. Exposed edges of monument bases are rough cut, concealed faces and tops are polished smooth.
6. Footing below. See Sheet 2.
7. Outline of Alternate Radius Foundation.

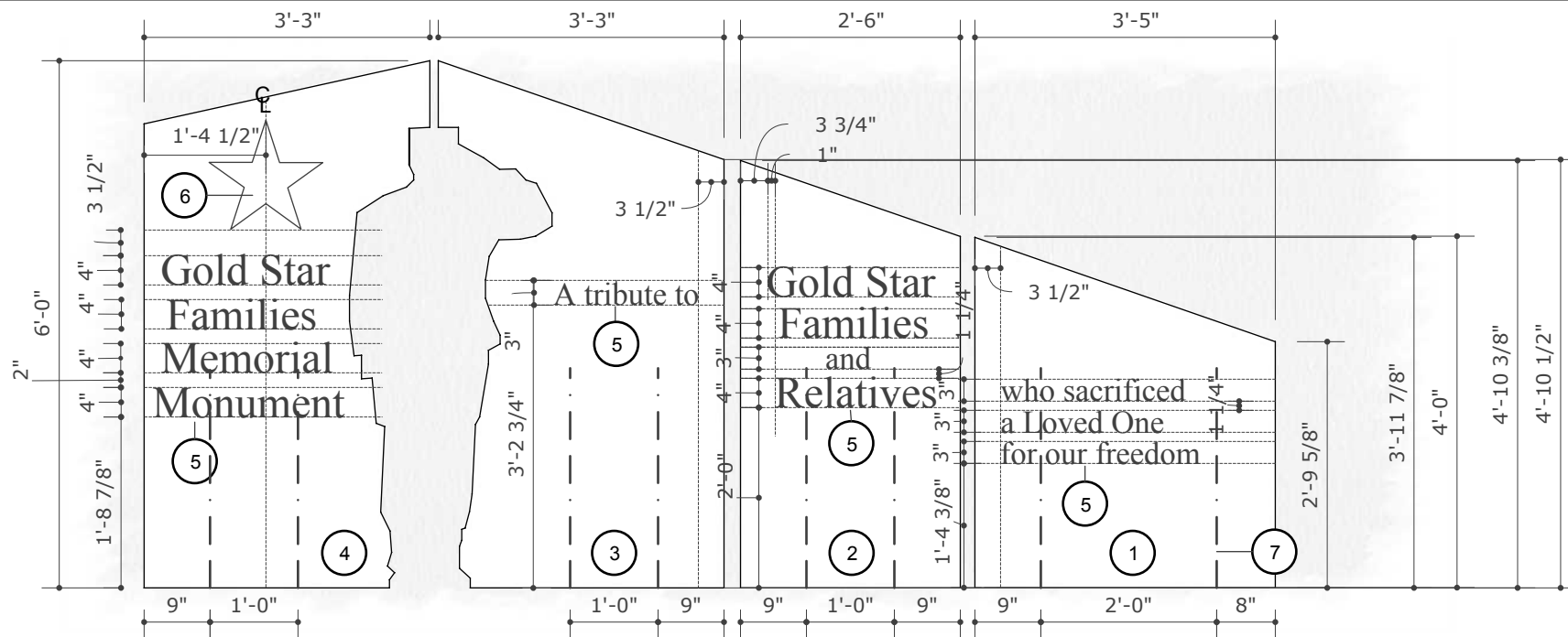
**1 Monument Base Placement Plan**  
 A05 Scale: 1/2" = 1' - 0"



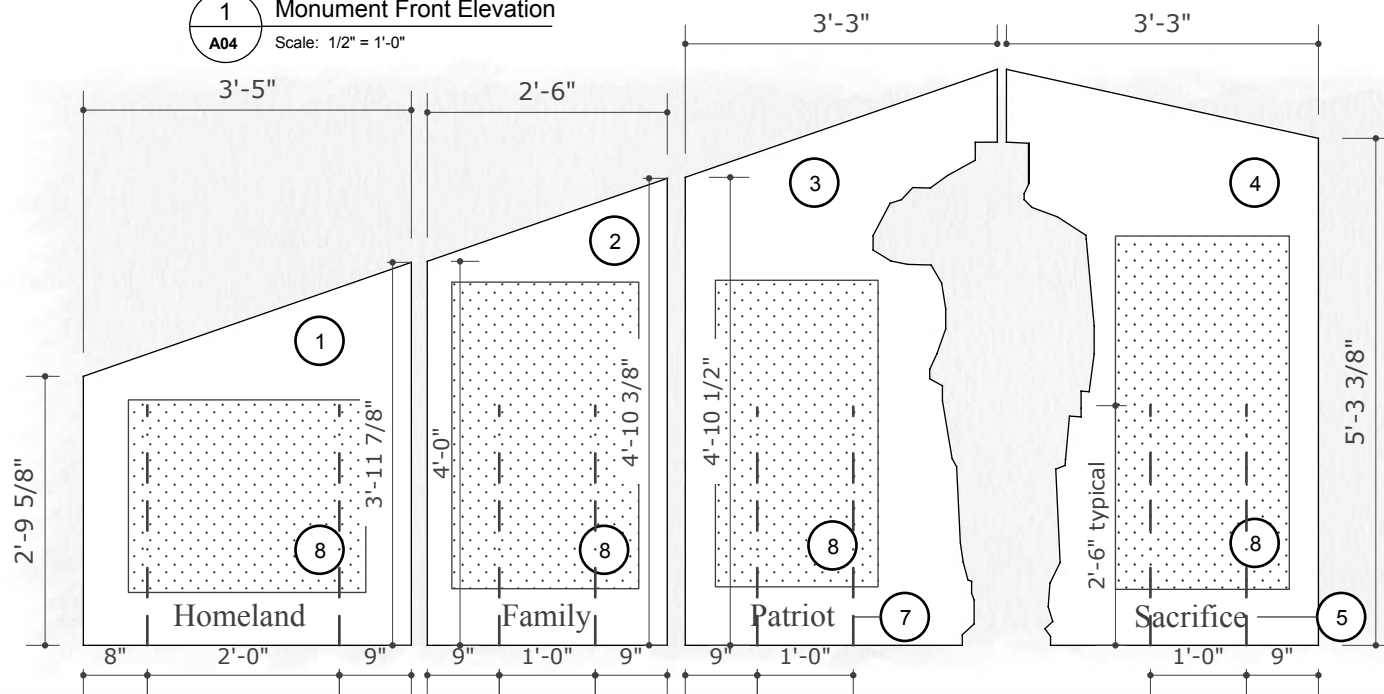
**2 Monumetrn Base Plans**  
 A 05 Scale: 1/2" = 1'-0"



**3 Monument Base Elevations**  
 A 05 Scale: 1/2" = 1'-0"



1 Monument Front Elevation  
A04 Scale: 1/2" = 1'-0"



1 Monument Rear Elevation  
A04 Scale: 1/2" = 1'-0"

#### Numbered Notes:

1. Standing Granite Slab 3' - 11 7/8" tall x 3'-5" wide x 12" thick.
2. Standing Granite Slab 4' - 10 3/8" tall x 2'-6" wide x 10" thick.
3. Standing Granite Slab 6' - 0" tall x 3'-5" wide x 8" thick.
4. Standing Granite Slab 6' - 0" tall x 3'-5" wide x 8" thick.
5. Sandblasted inscription text height as indicated. Text as shown. Times New Roman font.
6. Cast Bronze Nautical Star with concealed stainless steel fasteners.
7. 1" dia. drilled cores by monument installer typical 2 each stone.
8. Image areas. Coordinate with owner.



# City of Salem Historic Design Review – Major Oregon Vietnam War Memorial

Applicant: Oregon Parks & Recreation Department  
Agent: Vietnam War Memorial Fund  
Designer: Abbaté Designs LLC



## Contact Information:

Steve Bates:	<a href="mailto:vietnamwarmem@aol.com">vietnamwarmem@aol.com</a>	503-663-6271
Chris Havel:	<a href="mailto:chris.havel@oregon.gov">chris.havel@oregon.gov</a>	503-986-0722
Mike Abbaté:	<a href="mailto:mike@abbatedesigns.com">mike@abbatedesigns.com</a>	971-404-8670

October 2, 2020



**Chris Havel** Associate Director, Oregon Parks & Recreation Department

**Steve Bates** President, Oregon Vietnam War Memorial Fund



United States Department of the Interior  
National Park Service

## National Register of Historic Places Continuation Sheet

Section number 8 Page 35

---

**LANDSCAPE DEVELOPMENT:  
PREPARATION FOR EXPANDING THE CAPITOL MALL**

In addition to the Capitol Building, several related landscape elements are counted as separately contributing features of the nominated area. These are as follows: 1) the set of colossal sculptural stelae commemorating the Lewis and Clark Expedition and Oregon Trail migrations carved by Leo Friedlander and situated at the base of the Capitol's front steps, 2) the north plaza, or sunken terrace opposite the front of the Capitol, including street rights of way on east, south and west sides comprising a total area of 3.42 acres, 3) the Capitol grounds, an area of 11.07 acres containing the last vestige of historic Willson Park remaining in public open space, 4) "The Circuit Rider," an heroic bronze equestrian statue produced by noted American sculptor Alexander Phimister Proctor which has been associated with the Capitol site since its installation there in 1923, and 5) the Breyman Fountain, a memorial to pioneers erected in 1904 on the west axis which led to the front of the old Statehouse.

Objects in East Park important in the Capitol's history are the statues of Dr. John McLoughlin and the Reverend Jason Lee which are duplicates of bronzes in Statuary Hall in the nation's Capitol, and a grouping of column sections from the old Statehouse of 1876. However, because these features represent commemorative activities post-dating the historic period of significance chosen for this nomination, they are not counted as contributing features at present. Their significance is nonetheless verified by inclusion in the discussion.

The grounds of the Oregon State Capitol which comprise the nominated area of approximately 14 1/2 acres represent the traditional capitol building site as it evolved from the Territorial period to the present day. It will be remembered that the Territorial Capitol of 1853-1854 occupied Block 84 at the head of Willson Avenue, the long public square at the center of the original plat of Salem laid out by William H. Willson in 1846. The Statehouse of 1876 was built on the same site. In due course, Summer and Capitol streets at west and east ends of Block 84 were vacated, and Lots 1 through 5 of Block 1 of Waldo's



United States Department of the Interior  
National Park Service

# National Register of Historic Places Continuation Sheet

Section number 8 Page 36

---

Addition lying on the east side of Capitol Street were annexed to the State-owned parcel. By the time the old Statehouse burned in 1935, the extent of the grounds was approximately five acres.

While the Capitol Reconstruction Project was underway, the City of Salem and heirs of William H. Willson deeded to the State a little over two acres of public park land adjacent to the west edge of the Capitol grounds in order to facilitate the recommended siting and orientation of the new capitol on the Summer Street axis. At this time also, the State acquired by negotiated purchase and condemnation the east half of Block 83 and the west half of Block 85 to the north of Court Street, and Summer Street was vacated between these two half blocks.

The westerly four acres of Willson Park was the last portion of the "avenue" reserved as public space in the town plat to remain undeveloped by government buildings. Until recent years it continued under the jurisdiction of the City and was maintained by the Regional Parks and Recreation Agency of the Mid-Willamette Valley. In 1962, a hurricane devastated the stands of stately conifers which had been planted in the park before the turn of the century. The City undertook initial rehabilitation, but within a few years, Willson Park was deeded to the State to be maintained as a part of the Capitol grounds. Thus, by 1965, the extent of the Capitol grounds between Waverly Street on the east and Cottage Street on the west was eleven acres.

Willson Park was, of necessity, comprehensively re-landscaped following the memorable Columbus Day storm. The cylindrical Waite Fountain, a memorial to Salem printer and publisher, E. M. Waite, had been a central feature on the east-west axis of government buildings since 1912. It was replaced by a low, geometrically-shaped fountain of concrete. New paved walks were laid out in curvilinear plan, and a plaza of aggregate was developed at the west end fronting Cottage Street. Recently an octagonal bandstand was placed to the south of the central concourse. At slightly enlarged scale, it duplicates in spirit the more diminutive civic bandstand which was in use since before the turn of the century at various locations in the park. The civic bandstand had been removed in the course of constructing the new Capitol to open up the west approach.<sup>44</sup> The ornamental trees and shrubery introduced to Willson Park over twenty years

United States Department of the Interior  
National Park Service

## National Register of Historic Places Continuation Sheet

Section number 8 Page 37

---

ago are now mature enough to have combined well with the few remaining early-day conifer plantings. Still, the general quality of the park today is one of openness and light. The only historic object remaining in Willson Park is a remnant of the Breyman Fountain situated at the curb line of Cottage Street, where it was placed in 1904, squarely centered on the axis which led to the west front of the old Statehouse.

The cast iron fountain was a gift to the city from Salem mercantilist Werner Breyman. That it honored Oregon pioneers was more evident before the loss of its elaborate lamp standard, which was embellished with bison heads, American eagles and a statuette of a male "pioneer" bearing a musket--all universal iconography of the westward movement. The entire structure rose to a height of 15 feet. The mass-produced pioneer figure shading his gaze with an up-raised hand had been a popular ornament for memorial fountains elsewhere in the West in the early years of the 20th Century.

A denser canopy of conifers spreads over the east Capitol grounds, which was less affected by the Columbus Day storm of 1962. The distinguishing feature of East Park is its central walk, extending from the Capitol's east entrance to Waverly Street on axis with the west front of the old State Agriculture Building, located on the east side of 12th Street. The Agriculture Building of 1929, more recently occupied by the State Department of Commerce, had been purposely related to the Capitol by means of a view corridor, or alleyway between the Supreme Court Building (1913) and State Office Building (1930), now known as the Justice Building. Portland architect William C. Knighton designed each of the buildings, the latter two while principal of the firm Knighton and Howell.

The focal point of East Park is a monumental equestrian statue in bronze on a high granite podium. It occupies a central plaza, or widening in the axial walk. "The Circuit Rider" was commissioned by Robert A. Booth, prominent Eugene businessman and early Oregon State Highway Commissioner, as a memorial to his father, a Methodist Episcopal minister who died in 1917. On its completion in 1923, it was placed at the west front of the old Statehouse, close to State Street on the south side, but it was relocated in the course of constructing the new Capitol. Booth engaged the

**TABLE 230-3. OREGON STATE CAPITOL**

<b>Zone</b>	<b>Resource</b>	<b>Significant Features</b>
1	Capitol Building and adjacent wings	<ul style="list-style-type: none"> <li>■ Rotunda.</li> <li>■ Gold Oregon Pioneer Statue.</li> <li>■ Cast bronze Bas-Reliefs.</li> </ul>
	Additions	
2	Oregon Migration Relief Sculpture	<ul style="list-style-type: none"> <li>■ Figures of Pioneers and a Covered Wagon.</li> <li>■ Map of Oregon Trail.</li> </ul>
	Lewis & Clark Relief Sculpture	<ul style="list-style-type: none"> <li>■ Figures of Lewis, Clark and Sacagawea.</li> <li>■ Map of Expedition</li> </ul>
3	Willson Park	<ul style="list-style-type: none"> <li>■ Breyman Fountain.</li> <li>■ Waite Fountain.</li> <li>■ Walk of Flags.</li> <li>■ Liberty Bell Replica.</li> <li>■ Gazebo.</li> <li>■ Parade of Animals Sculpture.</li> <li>■ Douglas-Fir tree grown from seed that rode aboard Apollo 14.</li> <li>■ Capitol Beaver Family Sculpture.</li> </ul>
4	Capitol (East) Park	<ul style="list-style-type: none"> <li>■ Circuit Rider Statue.</li> <li>■ John McLoughlin Statue.</li> <li>■ Jason Lee Statue.</li> <li>■ Corinthian Columns remaining from Second Capitol.</li> <li>■ Memorial to Oregon Recipients of Congressional Medal of Honor.</li> </ul>

TABLE 230-3. OREGON STATE CAPITOL		
Zone	Resource	Significant Features
5	North Plaza, Sunken Terrace	<ul style="list-style-type: none"><li>■ Sprague Fountain.</li><li>■ Wall of Water Fountain.</li></ul>



# Oregon State Capitol National Register Boundary

