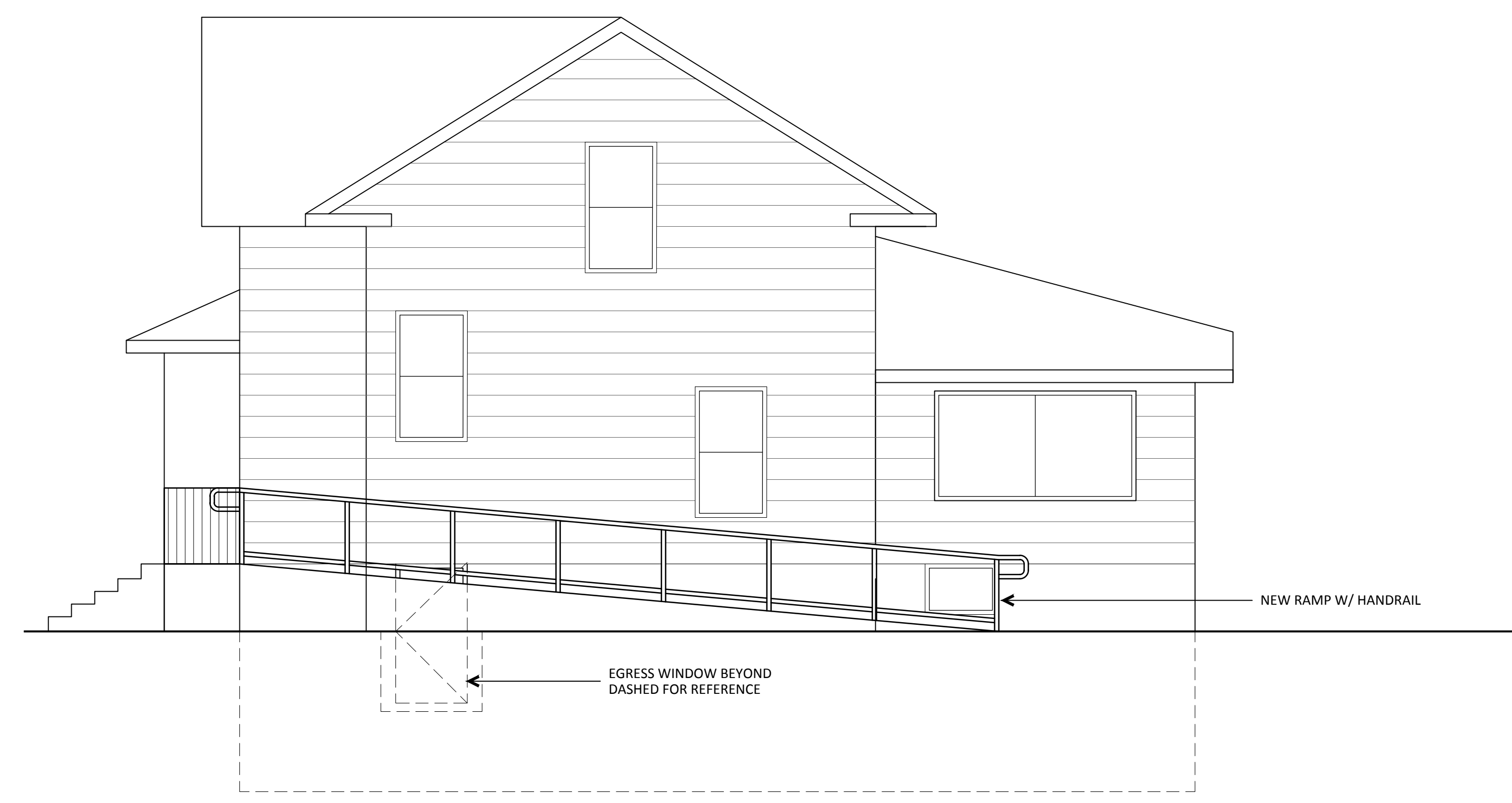
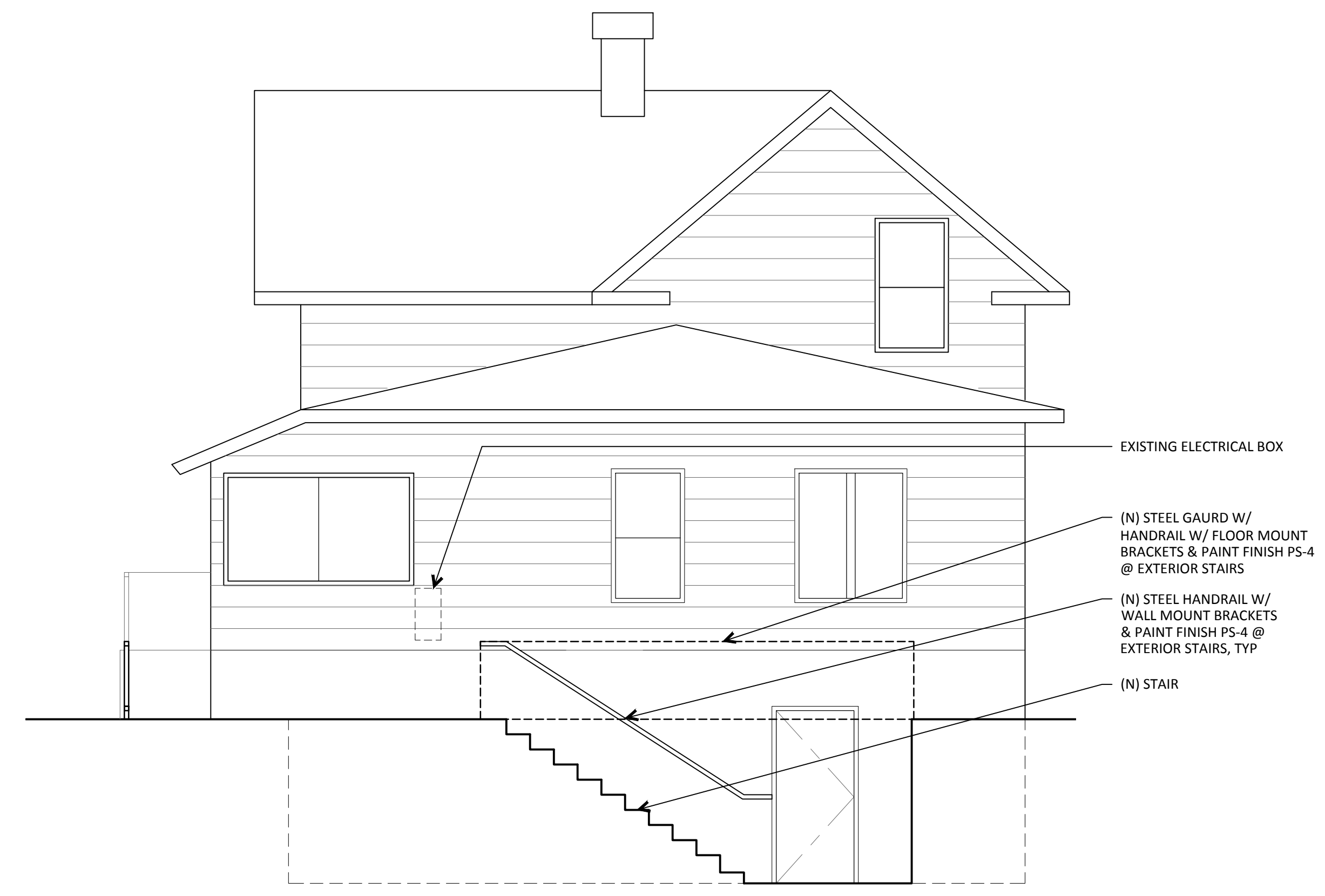


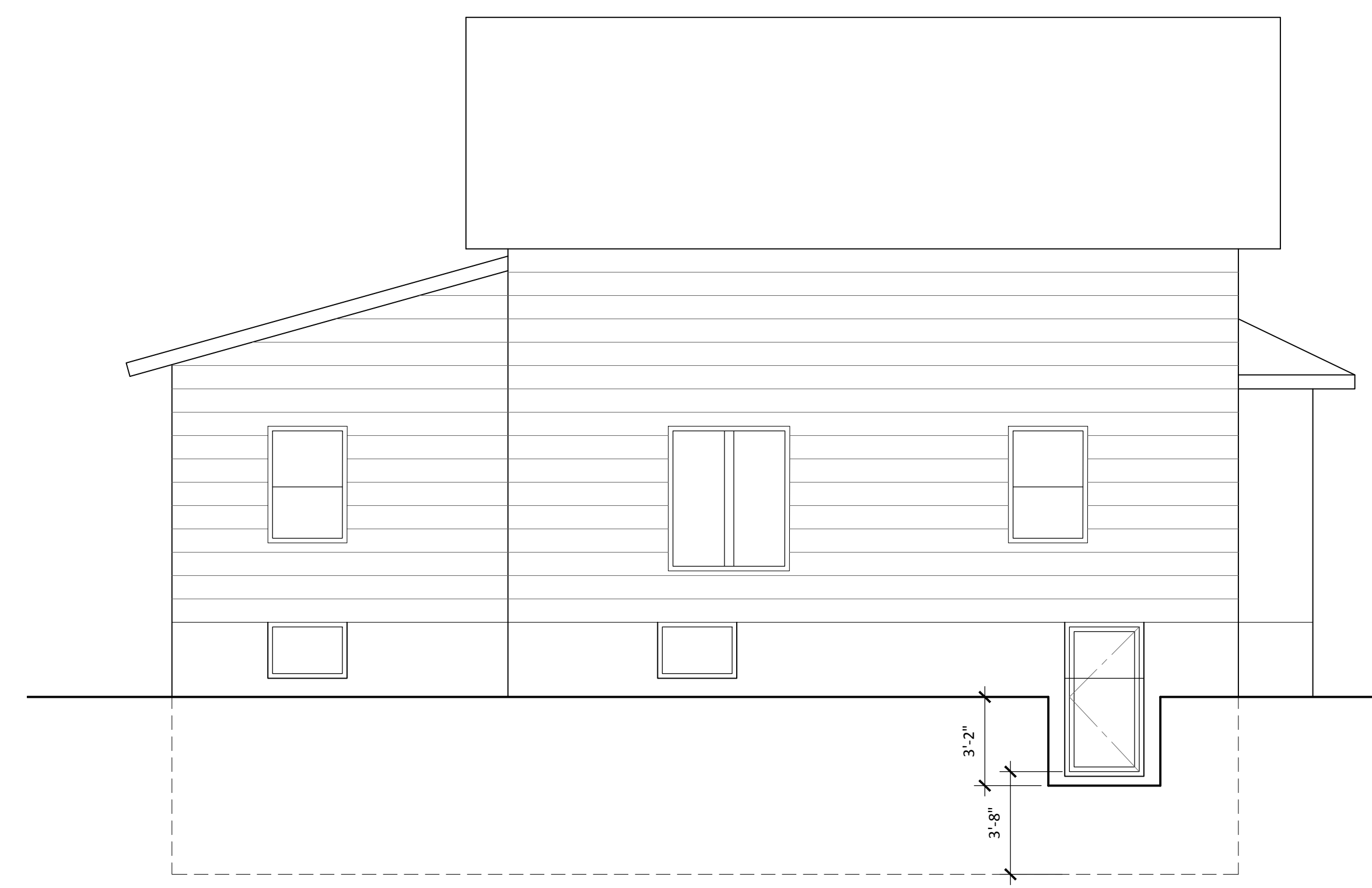
**1 BUILDING "B" ELEVATION - EAST**  
 1/4" = 1'-0"



**2 BUILDING "B" ELEVATION - NORTH**  
 1/4" = 1'-0"



**3 BUILDING "B" ELEVATION - WEST**  
 1/16" = 1'-0"



**4 BUILDING "B" ELEVATION - SOUTH**  
 1/16" = 1'-0"