

UTILITY PLAN KEYNOTES

- ① (E) OVERHEAD ELECTRICAL SERVICE
- ② (N) UNDERGROUND ELECTRICAL SERVICE
- ③ (N) VALLEY GUTTER W/ CATCHBASINS, W/ CONNECT TO (E) STORMWATER SYSTEM AT ALLEY
- ④ (N) VAULT W/ FDC
- ⑤ (N) DOUBLE CHECK ASSEMBLY
- ⑥ INDICATES GRADE HARDSCAPE TO DRAIN
- ⑦ (N) WATER SERVICE
- ⑧ (N) FIRE SERVICE

REVISIONS

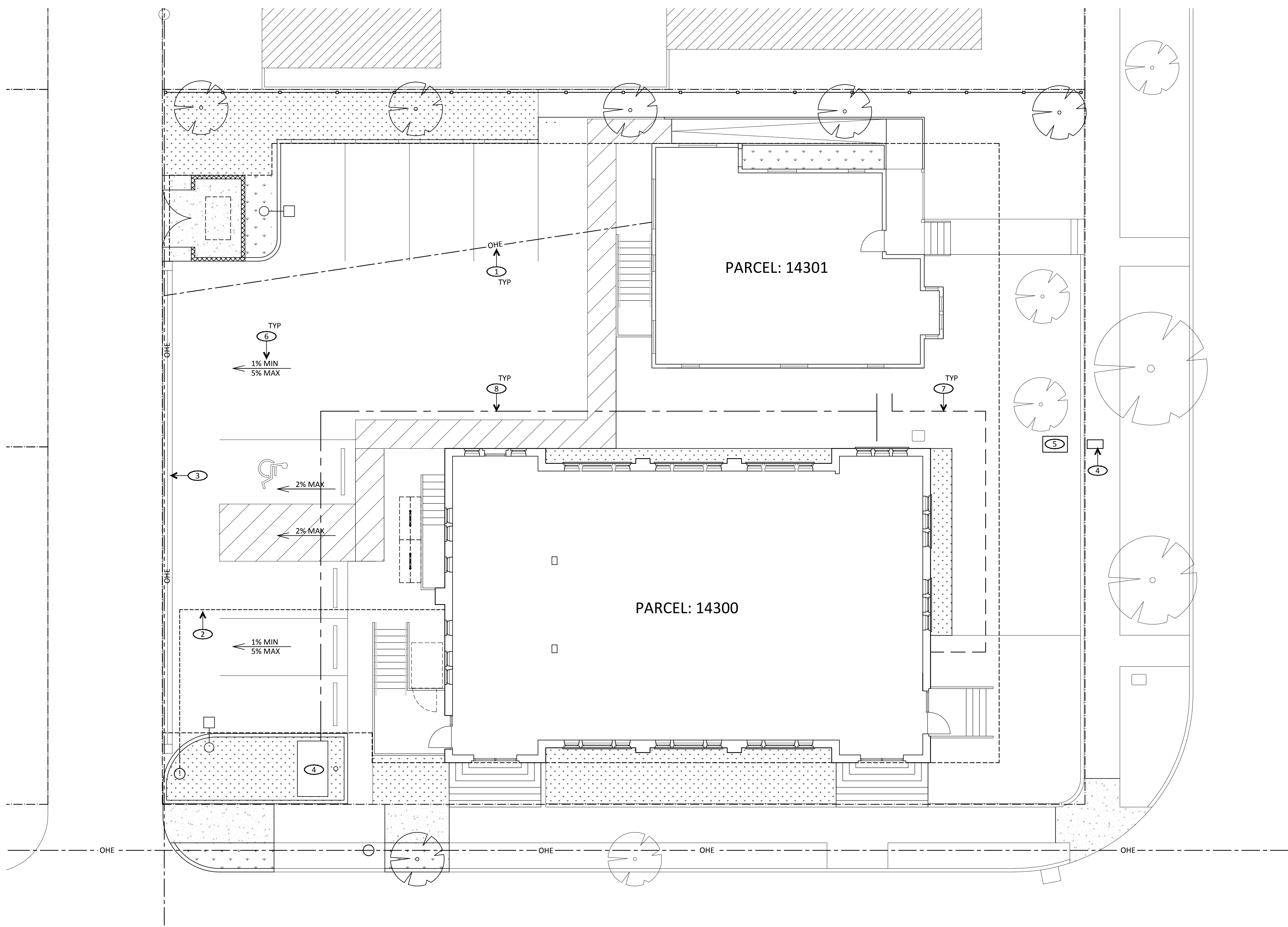
LAND USE REVIEW

DEVNW
 905 AND 925 COTTAGE ST NE SALEM, OR 97301
 BUILDING RENOVATION

JOB NO: 20222
 ISSUE DATE: 24 JULY 2020

PRELIMINARY
 UTILITY PLAN

A310



1 PRELIMINARY UTILITY PLAN
 1/8" = 1'-0"