

GMA ARCHITECTS
860 West Park Street / Ste 300
Eugene / Oregon / 97401
p 541.344.9157
gma-arch.com

DESCRIPTION OF EXISTING ASSEMBLIES

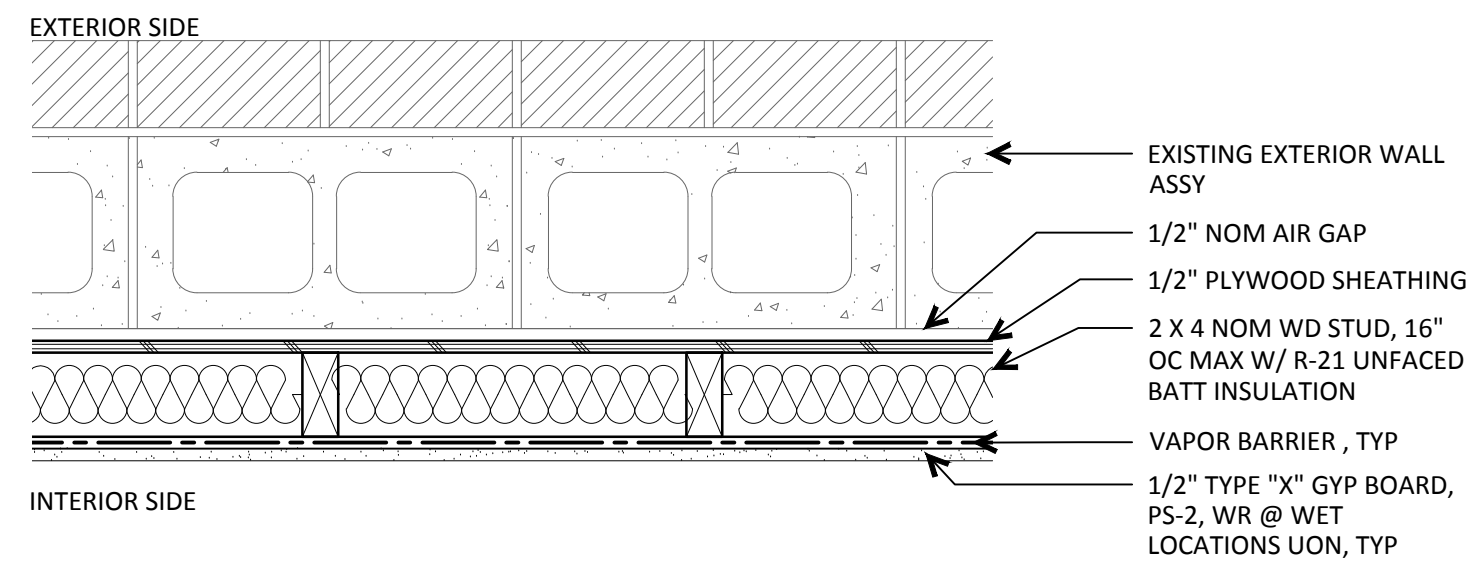
THE BUILDING IS AN EARLY 1900'S VINTAGE CHURCH WITH A SLOPED WOOD FRAMED FLOOR SYSTEM IN THE MAIN SANCTUARY WITH A CHOIR LOFT AT THE EAST AND A SMALL OFFICE/MECH MEZZ ABOVE THE PROSCENIUM.

ALL IS ABOVE A FULL HEIGHT BASEMENT. THE BASEMENT IS CONCRETE FULL HEIGHT RETAINING WALLS.

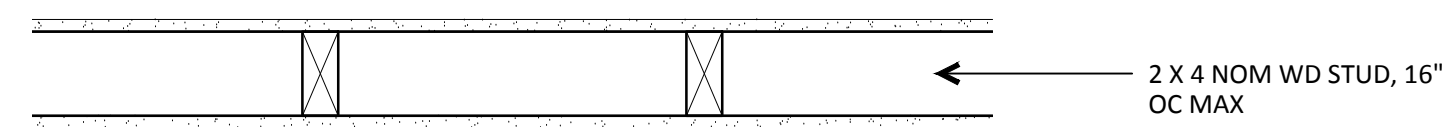
THE EXTERIOR WALLS ARE MULTI-WYTHE BRICK ABOVE THE CEILING OF THE SANCTUARY AND PRESUMABLY ARE A SINGLE WYTHE OF BRICK OVER HOLLOW CLAY TILE BELOW THIS LEVEL FOR THE SANCTUARY.

THE ROOF IS HEAVY TIMBER WOOD TRUSSES.

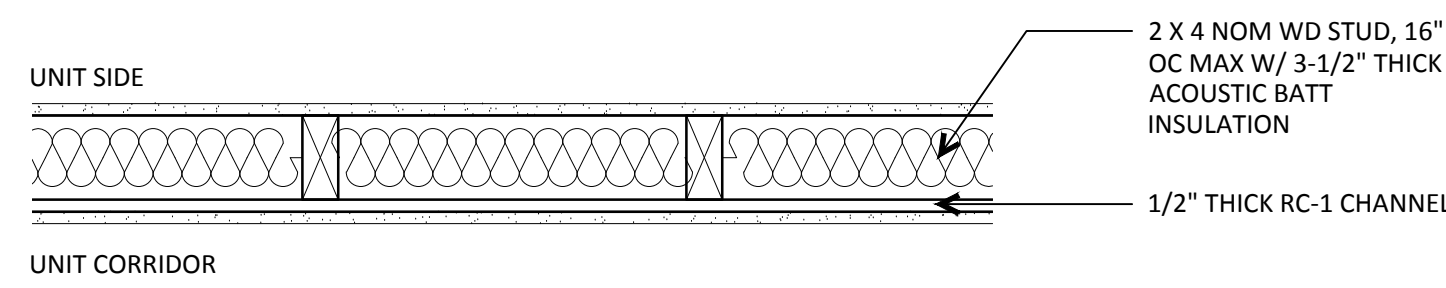
PROPOSED ASSEMBLIES



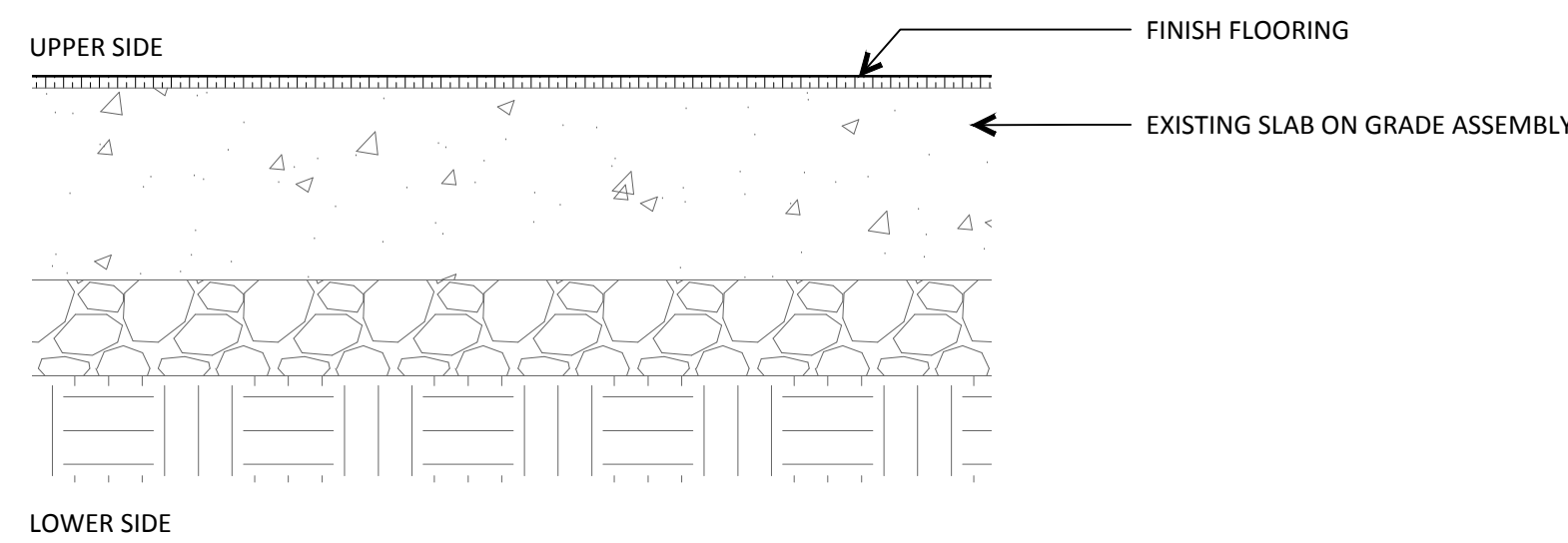
A WALL TYPE A - TYPICAL FURING WALL @ EXTERIOR A
1 1/2" = 1'-0" 1/2" HOUR FIRE RATED



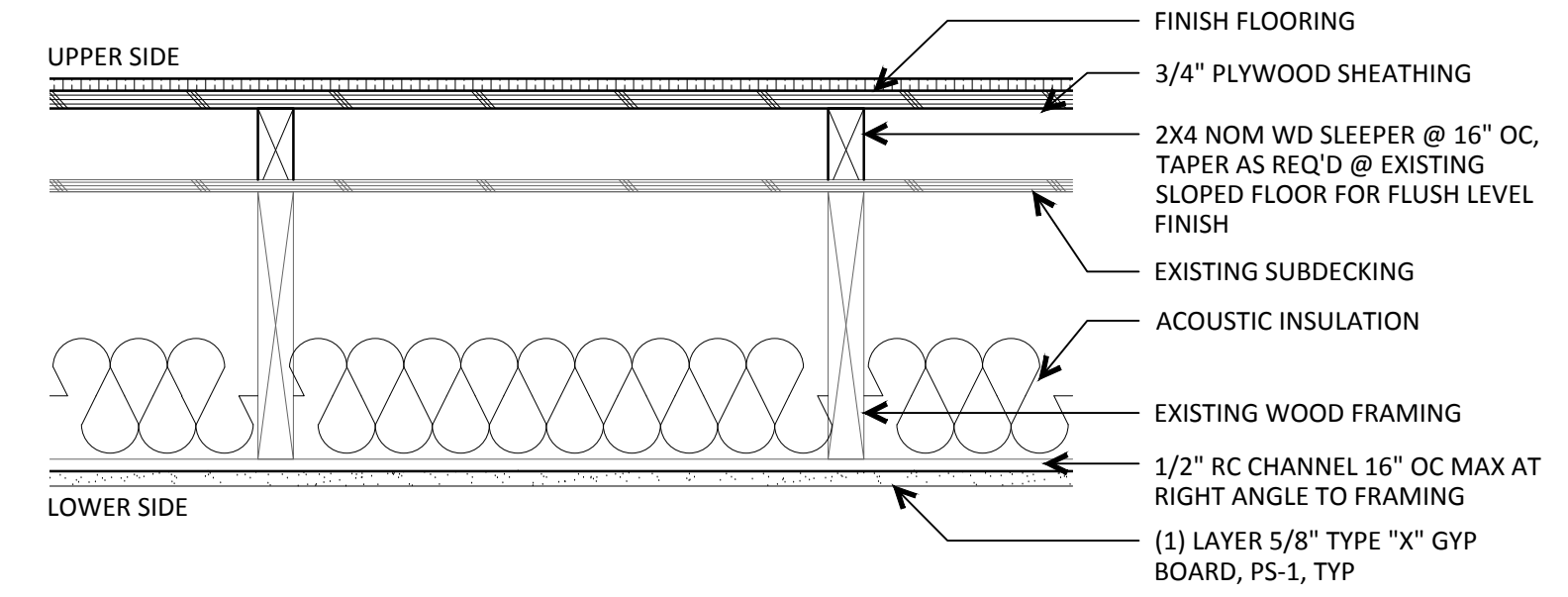
B WALL TYPE B - TYPICAL INTERIOR WALL B
1 1/2" = 1'-0"



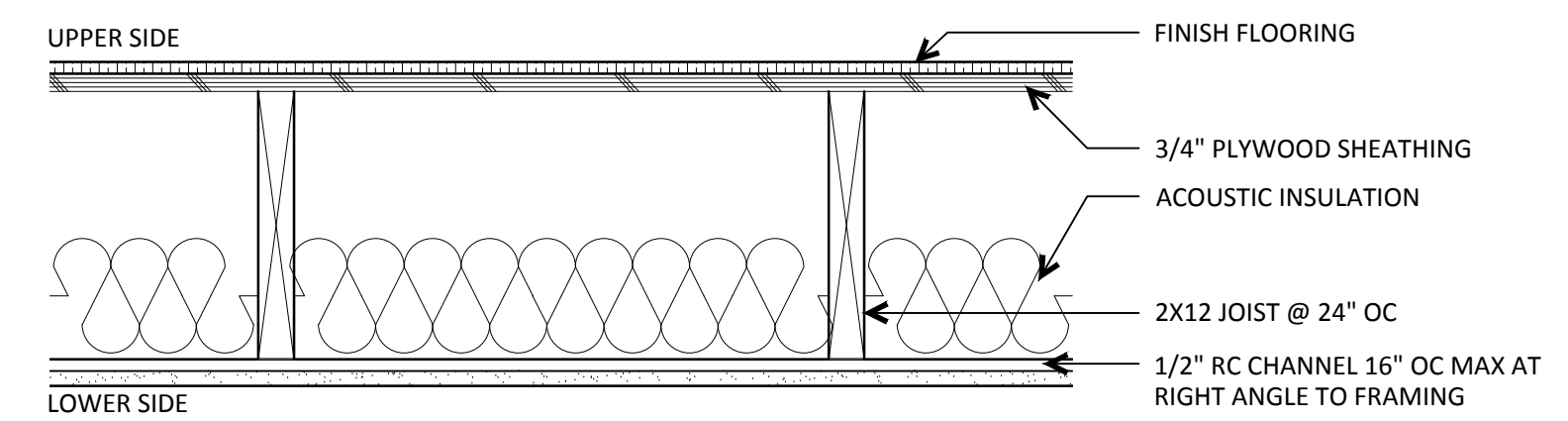
C WALL TYPE C - TYPICAL UNIT DEMISING & CORRIDOR WALL C
1 1/2" = 1'-0" 1/2" HOUR FIRE RATED



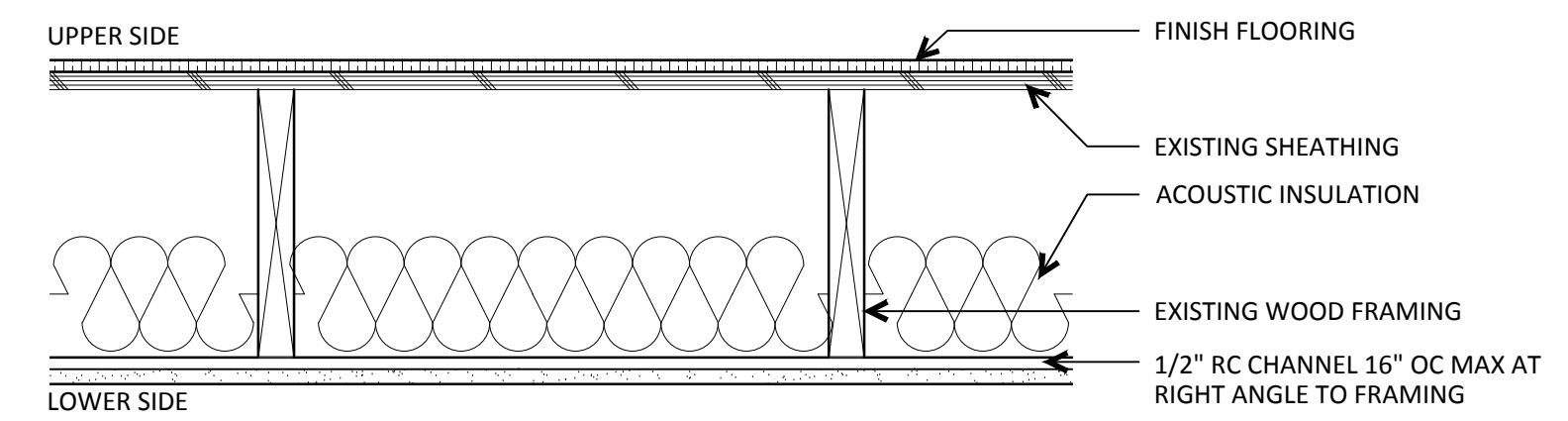
1 FLOOR ASSEMBLY 1 - BASEMENTS F1
1 1/2" = 1'-0"



2 PARCEL 14300 FLOOR ASSEMBLY 2 - GROUND FLOOR F2
1 1/2" = 1'-0" 1/2" HOUR FIRE RATED



3 PARCEL 14300 FLOOR ASSEMBLY 3 - SECOND FLOOR F3
1 1/2" = 1'-0" 1/2" HOUR FIRE RATED



4 PARCEL 14301 FLOOR ASSEMBLY 4 - GROUND & SECOND FLOOR F4
1 1/2" = 1'-0" 1/2" HOUR FIRE RATED

REVISIONS

LAND USE REVIEW

DEVNW
905 AND 925 COTTAGE ST NE SALEM, OR 97301
BUILDING RENOVATION

JOB NO: 20222
ISSUE DATE: 24 JULY 2020

ASSEMBLIES

G200