

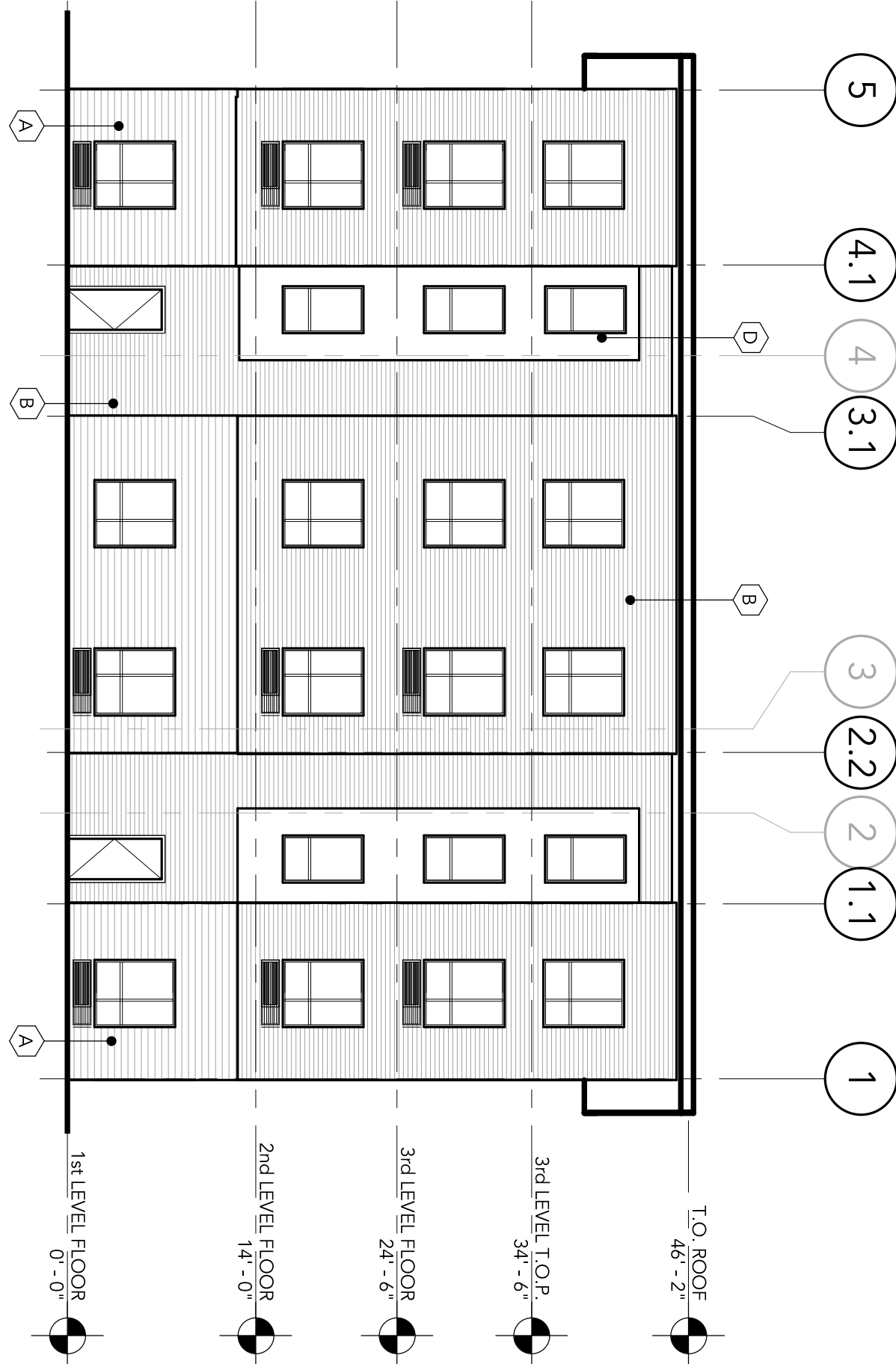
EXTERIOR ELEVATION GENERAL NOTES

1. THERE IS NO SIDING MATERIAL OR PAINT COLOR CHANGE ON AN OUTSIDE CORNER OF THE BUILDING.
2. ALL COLOR & MATERIAL CHANGES OCCUR ON AN INSIDE CORNER.
3. SEE WINDOW SCHEDULE FOR FRAME MATERIAL AND COLOR OF WINDOWS
4. DOORS AND DOOR FRAME COLOR TO MATCH COLOR OF ADJACENT MATERIAL.
5. FOR TYPICAL PIPE PENETRATIONS THROUGH EXTERIOR WALLS. [\(ADD VIEW REFERENCE TAG TO DETAIL\)](#)
6. ALL WALL MOUNTED FIXTURES THAT INCLUDE A BASE PLATE COVER: G. WALL MOUNTED LIGHT FIXTURES, HOSE BIBS, ELECTRICAL BOXES TO BE PLACED ON A SIDING BLOCK OUT PLATE PAINTED TO MATCH ADJACENT SIDING.

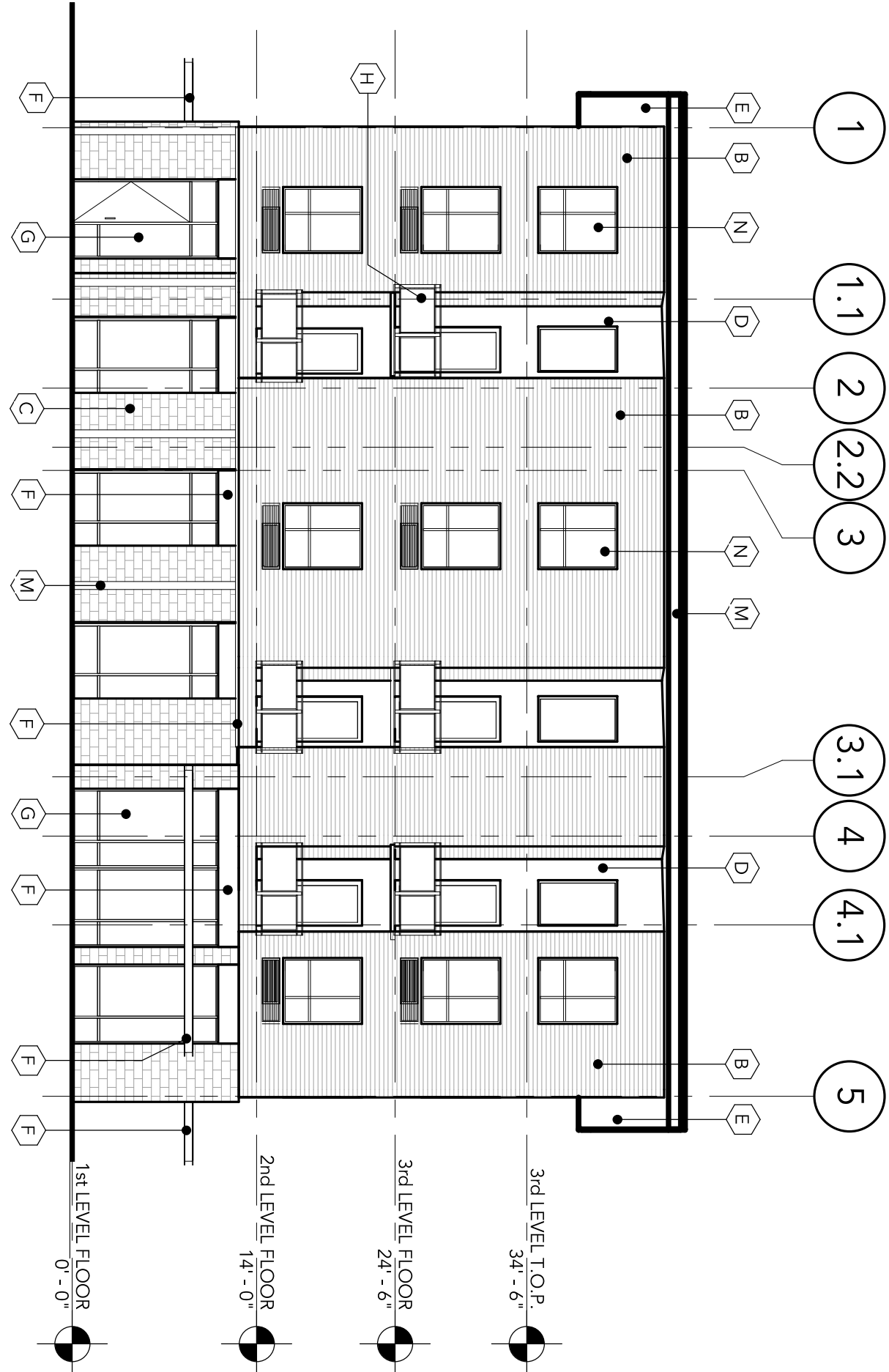
EXTERIOR ELEVATION COLOR & FINISH LEGEND

<b>A</b>	MATERIAL: FIBER CEMENT BOARD SIDING MANU/F: JAMES HARDIE SERIES: HARDIEPAK SMOOTH 7.25" FINISH: PAINTED COLOR: SW 7063 "NEBULOUS WHITE"	<b>H</b>	MATERIAL: JULIET BALCONY MANU/F: HOOKS & LATTICE SERIES: VICENZA FAUX BALCONY FINISH: FACTORY FINISH COLOR: BLACK
<b>B</b>	MATERIAL: FIBER CEMENT BOARD SIDING MANU/F: JAMES HARDIE SERIES: HARDIEPAK SMOOTH 5.25" FINISH: PAINTED COLOR: SW 6994 "GREENBLACK"	<b>J</b>	MATERIAL: METAL GUTTER/DOWNSPOUT MANU/F: METAL SPECIFICATIONS SERIES: 6" OGEE PROFILE GUTTER FINISH: PREFINISHED COLOR: SW 6994 "GREENBLACK"
<b>C</b>	MATERIAL: CMU VENEER MANU/F: MUTUAL MATERIALS SERIES: ROUND FACE FINISH: WINTERS 5X1 COLOR: CLEAR	<b>K</b>	MATERIAL: METAL FASCIA MANU/F: PER SPECIFICATIONS SERIES: N/A FINISH: PREFINISHED COLOR: PAINT TO MATCH ADJACENT MATERIAL
<b>D</b>	MATERIAL: SHIP-LAP CEDAR SIDING MANU/F: N/A SERIES: SEMI-GLOSS FINISH: CLEAR COLOR: CLEAR	<b>L</b>	MATERIAL: STEEL CANOPY MANU/F: N/A SERIES: PAINTED FINISH: SEMI-GLOSS COLOR: SW 6994 "GREENBLACK"
<b>E</b>	MATERIAL: T&G CEDAR SOFFIT MANU/F: N/A SERIES: SEMI-GLOSS FINISH: CLEAR COLOR: CLEAR	<b>M</b>	MATERIAL: WOOD COLUMN MANU/F: PER SPECIFICATIONS SERIES: N/A FINISH: SW 6994 "GREENBLACK" COLOR: SW 6994 "GREENBLACK"
<b>F</b>	MATERIAL: METAL SOFFIT TRIM MANU/F: TANALYN SERIES: PREFINISHED FINISH: MATCH MATERIAL "B" COLOR: BLACK	<b>N</b>	MATERIAL: VINYL WINDOW MANU/F: WINGARD SERIES: TRINISC FINISH: BLACK COLOR: BLACK
<b>G</b>	MATERIAL: STOREFRONT MANU/F: KAWNEER SERIES: 451T FINISH: PREFINISHED ALUMINUM COLOR: CHARCOAL	<b>P</b>	MATERIAL: TPO ROOF MANU/F: GAF SERIES: 451T FINISH: 60MIL COLOR: GRAY

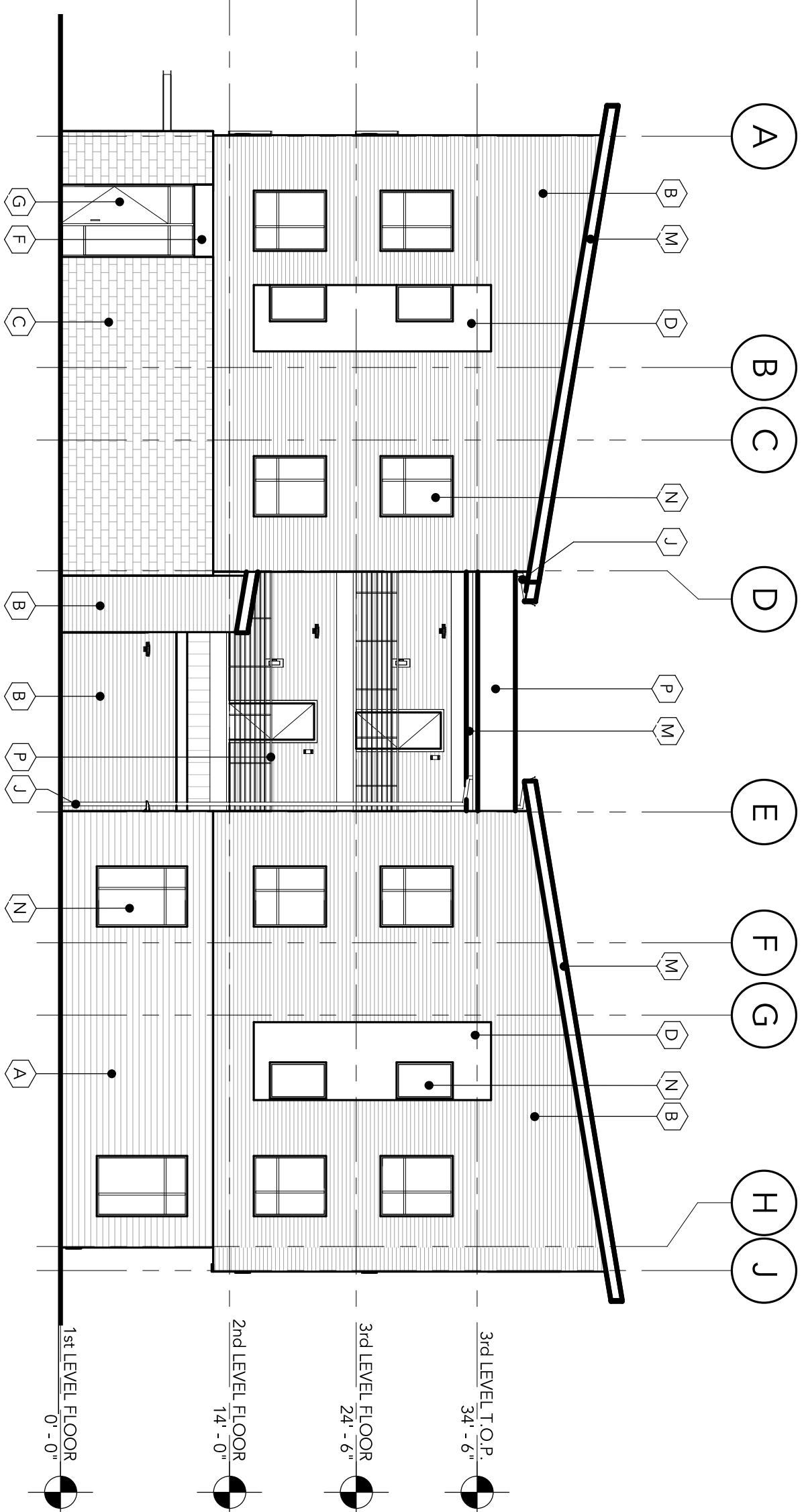
KEYNOTES



2 WEST ELEVATION  
SCALE: 3/32" = 1'-0"



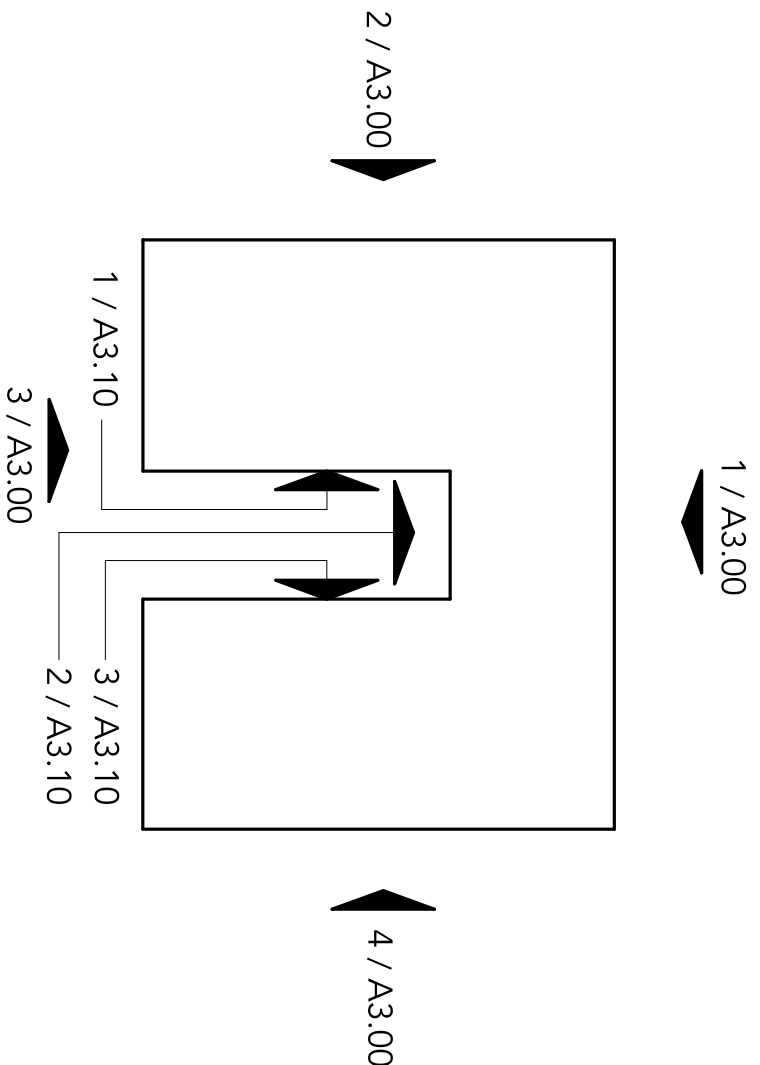
1 NORTH ELEVATION  
SCALE: 3/32" = 1'-0"



3 SOUTH ELEVATION  
SCALE: 3/32" = 1'-0"

4 EAST ELEVATION  
SCALE: 3/32" = 1'-0"

KEY PLAN



CIVIL  
WESTTECH ENGINEERS  
PH: (503) 585-2474