

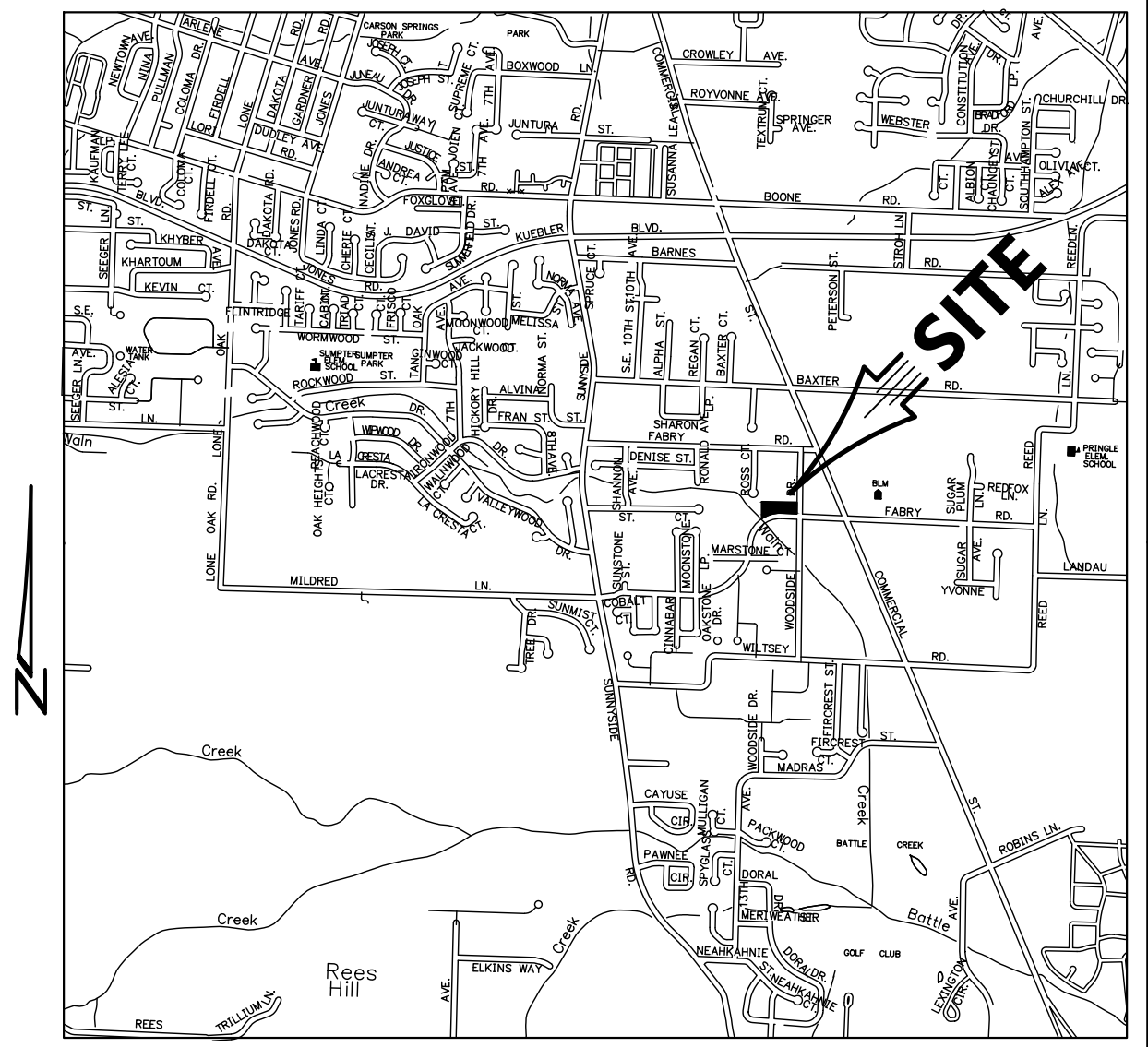
Owner / Developer:

MOUNTAIN WEST INVESTMENTS

201 FERRY ST SE
SALEM, OREGON 97301

CHARLENE'S HOUSE APARTMENTS

SEC. 14, T. 8 S., R. 3 W., W.M.
CITY OF SALEM
MARION COUNTY, OREGON



VICINITY MAP



1155 13th St. S.E. Salem, OR, 97302
PH: (503) 363-9227 FAX: (503) 364-1260
www.mtengineering.net office@mtengineering.net

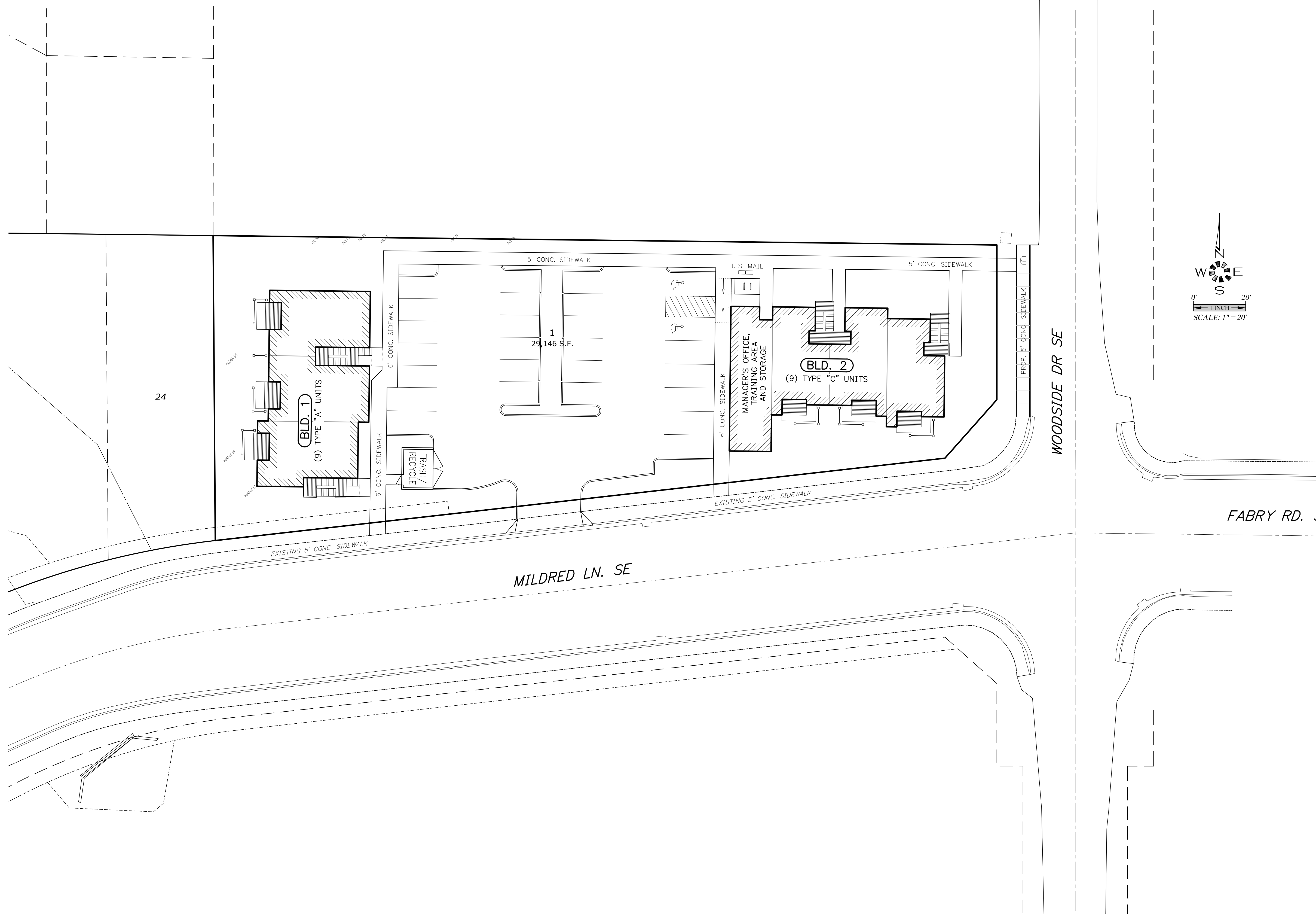
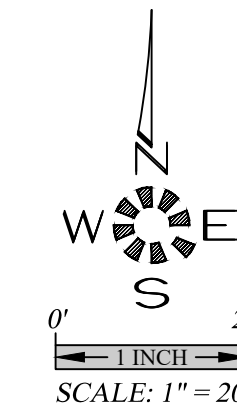
COVER SHEET

CHARLENE'S HOUSE APARTMENTS

SHEET INDEX

- SDR1 - COVER SHEET
- SDR2 - EXISTING CONDITIONS PLAN
- SDR3 - PRELIMINARY SITE PLAN
- SDR4 - OPEN SPACE PLAN
- SDR5 - PRELIMINARY GRADING AND DRAINAGE PLAN
- SDR6 - PRELIMINARY UTILITY PLAN
- SDR7 - EROSION CONTROL PLAN
- SDR8 - EROSION CONTROL NOTES
- SDR9 - EROSION CONTROL DETAILS

- L1.1 SCHEMATIC LANDSCAPE PLAN
- L1.2 SCHEMATIC LANDSCAPE DETAILS & NOTES
- BUILDING 1 (TYPE "A" UNITS)**
- A1.3 LOWER FLOOR PLAN
- A1.4 MIDDLE & UPPER FLOOR PLAN
- A1.8 BUILDING ELEVATIONS
- BUILDING 2 (TYPES "C" UNITS)**
- A2.3 LOWER FLOOR PLAN
- A2.4 UPPER FLOOR PLAN
- A2.8 BUILDING ELEVATIONS



J:\Mts\1818-Charlene's House\Drawings\SDR1.dwg, 5/19/2020, 11:52:51 AM, CSchneider

NO CHANGES, MODIFICATIONS OR REPRODUCTIONS TO BE MADE TO THESE DRAWINGS WITHOUT WRITTEN AUTHORIZATION FROM THE DESIGN ENGINEER. DIMENSIONS & NOTES TAKE PRECEDENCE OVER GRAPHICAL REPRESENTATION.

Design: M.D.G.
 Drawn: C.D.S.
 Checked: J.J.G.
 Date: SEPT 19
 Scale: AS SHOWN



EXPIRES: 06-30-2021
JOB # 6818

SDR1