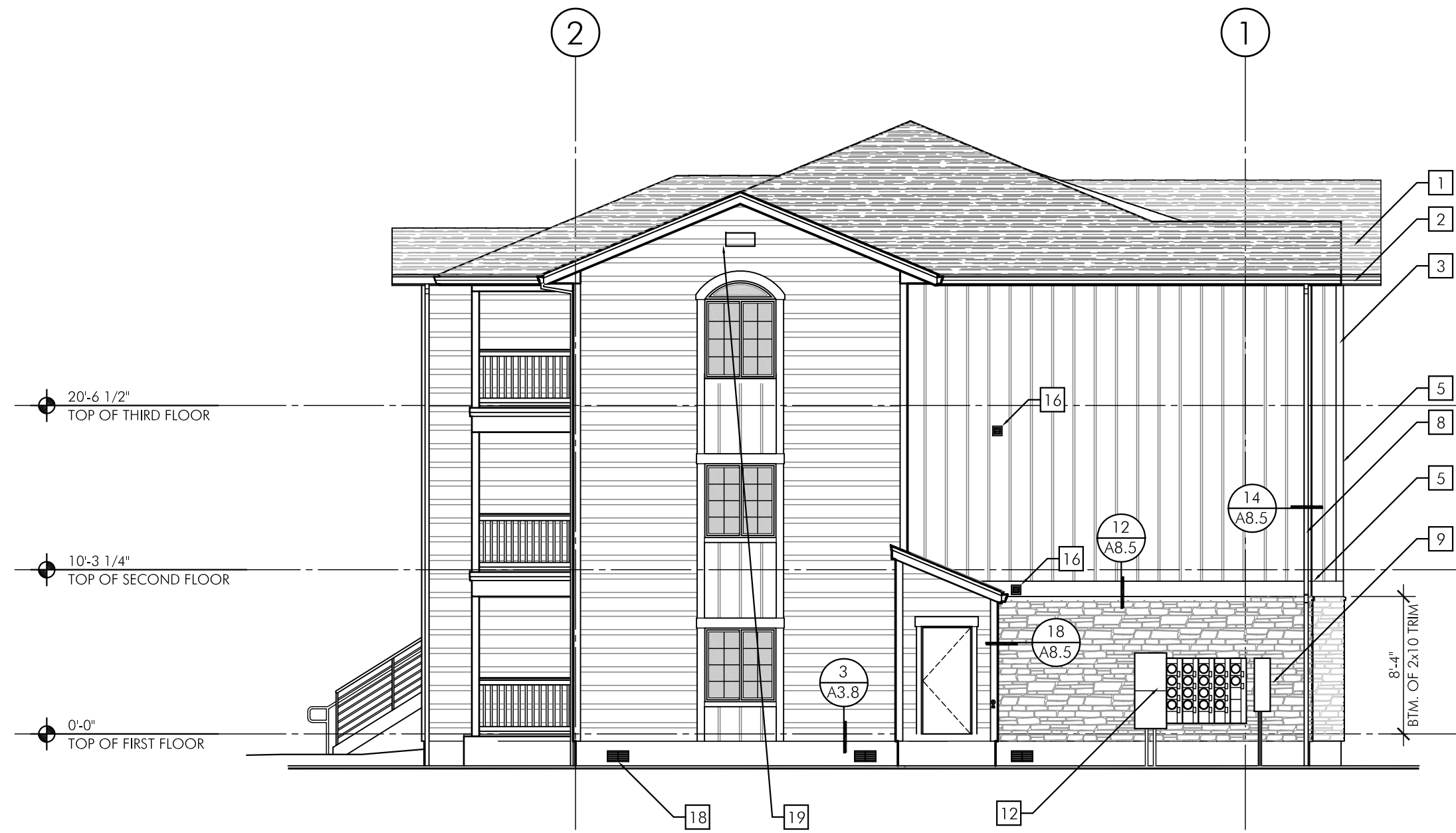




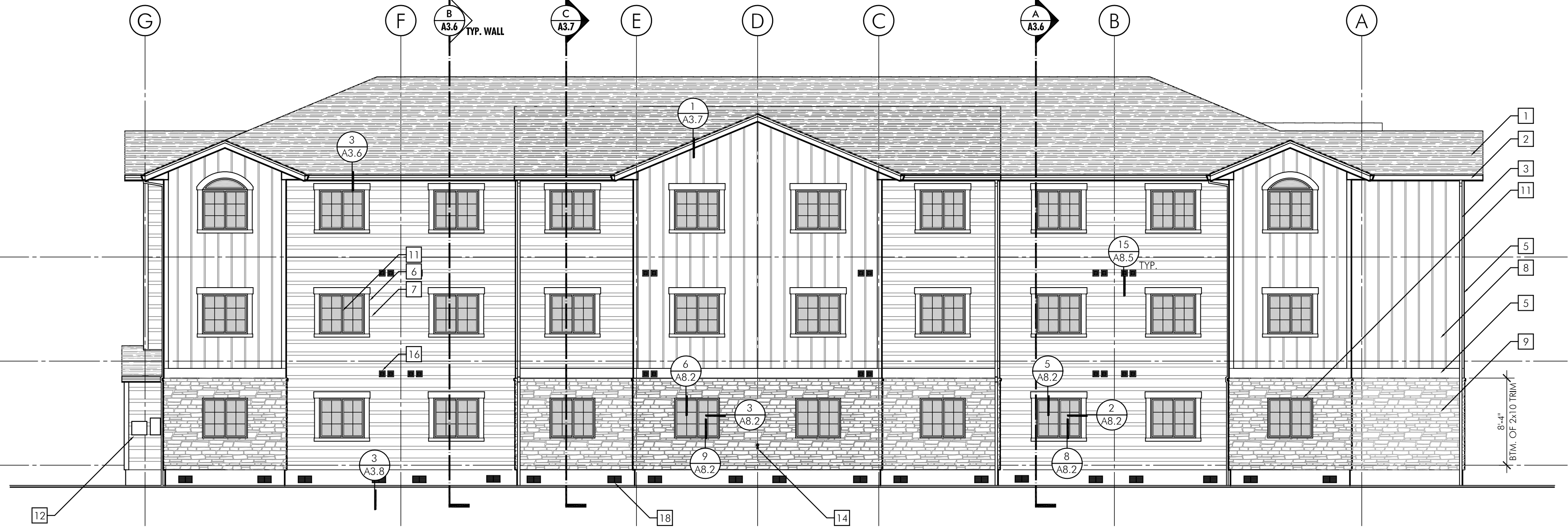
1 BUILDING "D" FRONT ENTRY ELEVATION

0' 2' 4' 8' 16' 24' 1/8" = 1'-0"



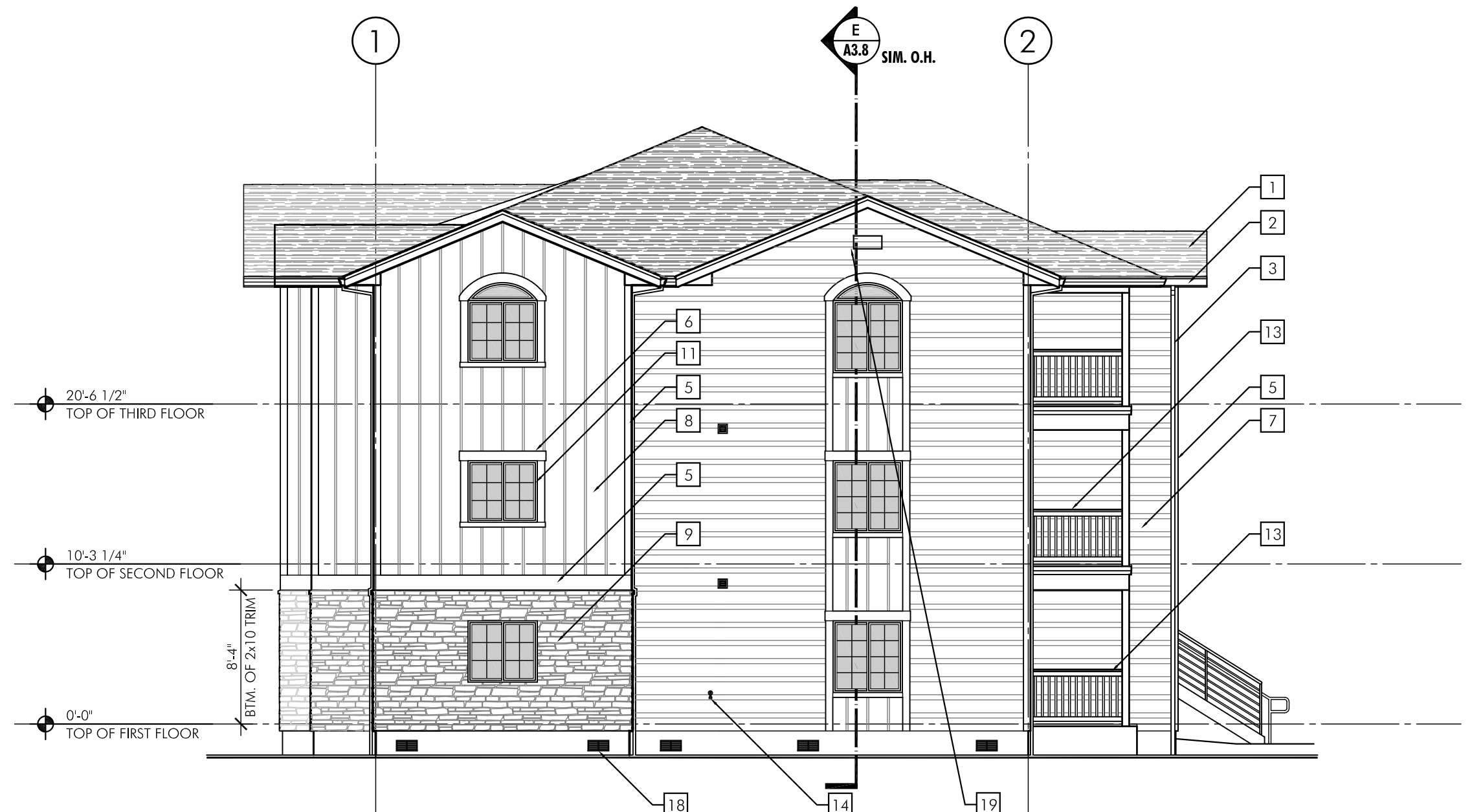
2 BUILDING "D" RIGHT SIDE ELEVATION

0' 2' 4' 8' 16' 24' 1/8" = 1'-0"



3 BUILDING "D" REAR ELEVATION

0' 2' 4' 8' 16' 24' 1/8" = 1'-0"



4 BUILDING "D" LEFT SIDE ELEVATION

0' 2' 4' 8' 16' 24' 1/8" = 1'-0"

ELEVATION NOTES:

- 1 ASPHALT SHINGLE ROOFING.
- 2 PRE-FINISHED GUTTERS.
- 3 PRE-FINISHED DOWNSPOUTS.
- 4 FASCIA, - PAINT.
- 5 TRIM, - PAINT.
- 6 WINDOW TRIM, - PAINT.
- 7 LAP SIDING, - PAINT.
- 8 BOARD AND BATT SIDING, - PAINT.
- 9 CULTURED STONE - TYPICAL.
- 10 EXTERIOR DOORS, - PAINT.
- 11 VINYL FRAMED WINDOWS.
- 12 ELECTRICAL PANELS AND EQUIPMENT. SEE ELECTRICAL DRAWINGS FOR LOCATIONS. PAINT TO MATCH WALL.
- 13 42" HIGH GUARDRAIL - TYPICAL.
- 14 HOSE BIBB ON TRIM BACKER.
- 15 PRE-FINISHED ROOF VENT.
- 16 EXHAUST COVERS.
- 17 LIGHT FIXTURE. SEE ELECTRICAL.
- 18 FOUNDATION VENTS WHERE SHOWN.
- 19 BUILDING IDENTIFICATION SIGNAGE.