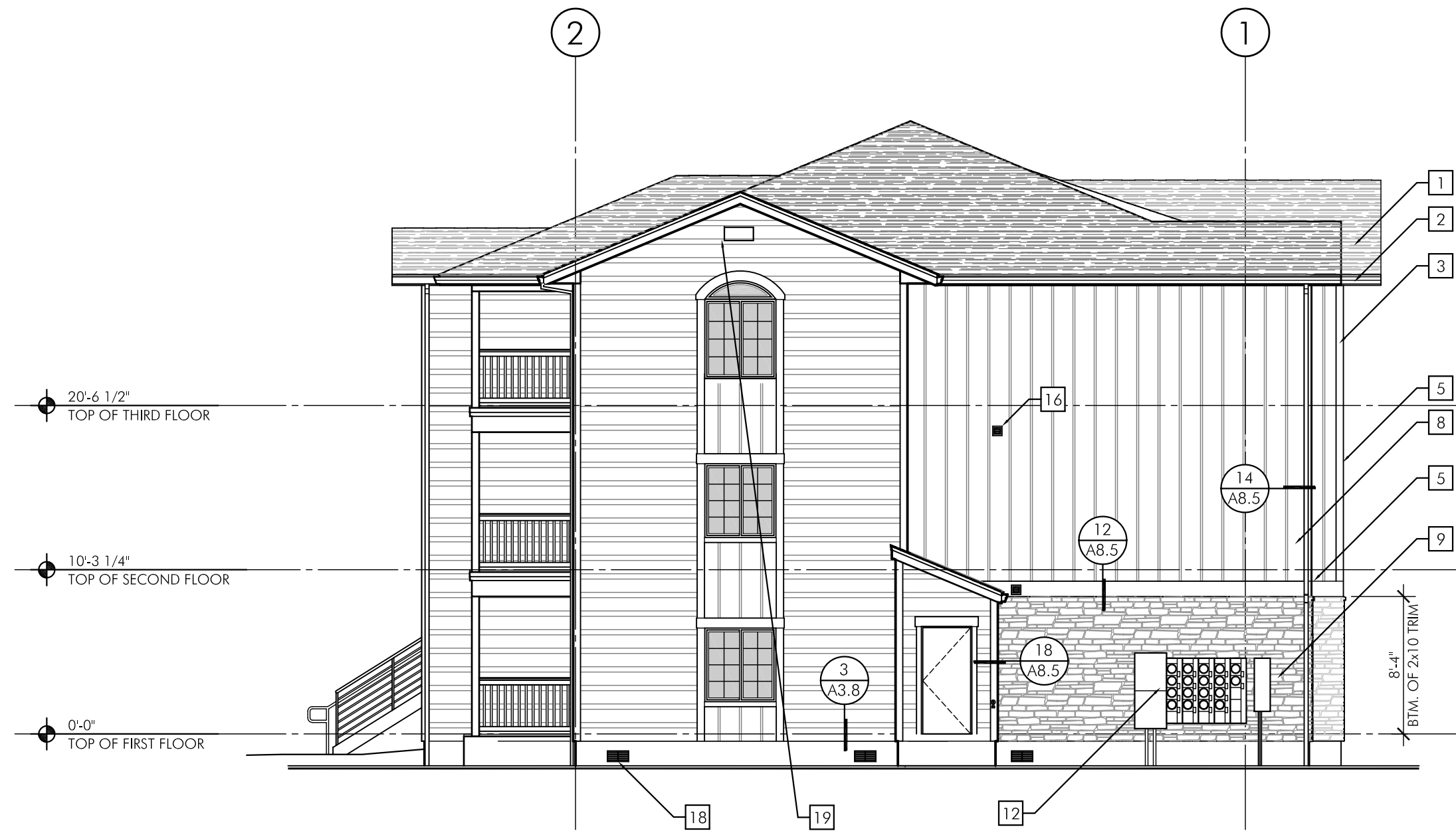
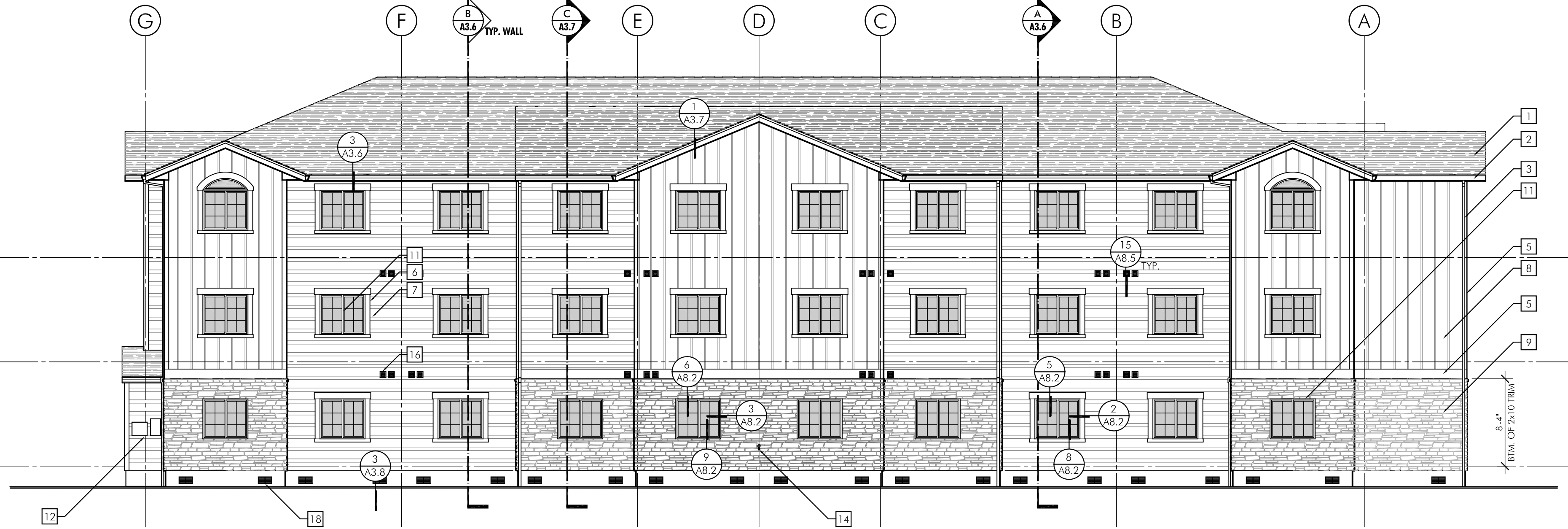




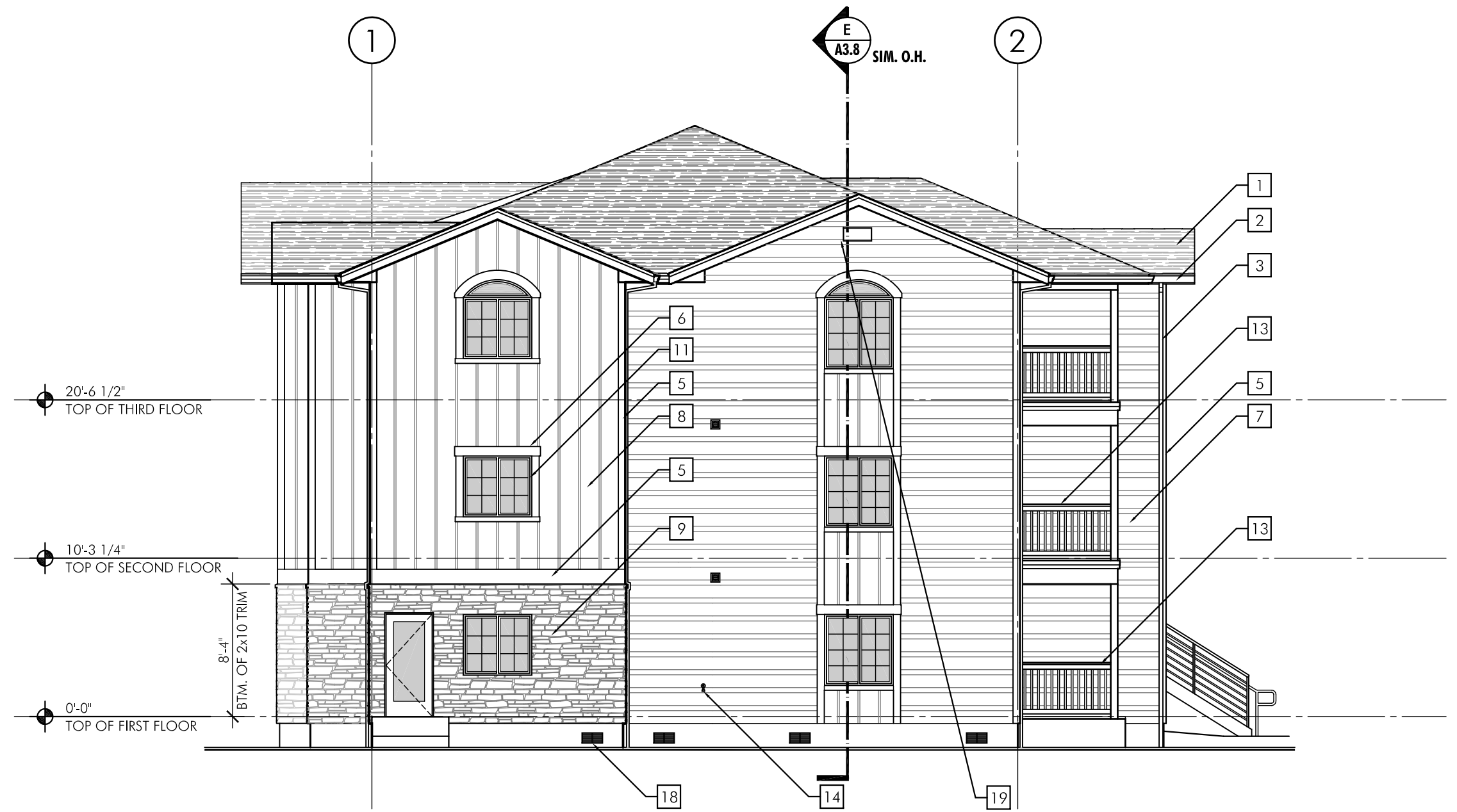
1 BUILDING "B" FRONT ENTRY ELEVATION



2 BUILDING "B" RIGHT SIDE ELEVATION



3 BUILDING "B" REAR ELEVATION



4 BUILDING "B" LEFT SIDE ELEVATION

ELEVATION NOTES:

- 1 ASPHALT SHINGLE ROOFING.
- 2 PRE-FINISHED GUTTERS.
- 3 PRE-FINISHED DOWNSPOUTS.
- 4 FASCIA, - PAINT.
- 5 TRIM, - PAINT.
- 6 WINDOW TRIM, - PAINT.
- 7 LAP SIDING, - PAINT.
- 8 BOARD AND BATT SIDING, - PAINT.
- 9 CULTURED STONE - TYPICAL.
- 10 EXTERIOR DOORS, - PAINT.
- 11 VINYL FRAMED WINDOWS.
- 12 ELECTRICAL PANELS AND EQUIPMENT. SEE ELECTRICAL DRAWINGS FOR LOCATIONS. PAINT TO MATCH WALL.
- 13 42" HIGH GUARDRAIL - TYPICAL.
- 14 HOSE BIBB ON TRIM BACKER.
- 15 PRE-FINISHED ROOF VENT.
- 16 EXHAUST COVERS.
- 17 LIGHT FIXTURE. SEE ELECTRICAL.
- 18 FOUNDATION VENTS WHERE SHOWN.
- 19 BUILDING IDENTIFICATION SIGNAGE.