

- TREES TO BE SAVED
- SIGNIFICANT TREES TO BE SAVED
- SIGNIFICANT TREES TO BE REMOVED
- TREES TO BE REMOVED
- HATCH INDICATES GRADE 25% OR GREATER
- INDICATES WETLAND PER 2003 REPORT



TREE CONSERVATION PLAN SUMMARY

	TOTAL TREES	REMOVED	PRESERVED
• AREA 1:	64	8	56
• AREA 2:	53	46	7
• AREA 3:	22	3	19
• AREA 4:	14	6	8
• AREA 5:	1	0	1
• AREA 6:	55	46	9
• AREA 7:	0	0	0
TOTALS:	209	109	100

- PERCENTAGE REMOVED: 52.2%
- PERCENTAGE PRESERVED: 47.8%

SIGNIFICANT ONES

- TOTAL: 12
- REMOVED: 2
- PRESERVED: 10

PLANNING ACTION
 APPROVED SUBJECT TO
 DEVELOPMENT REQUIREMENTS
 NOTED ON PLANS.
 11/20/2014
 Date and Signature of Planner

AREA 1

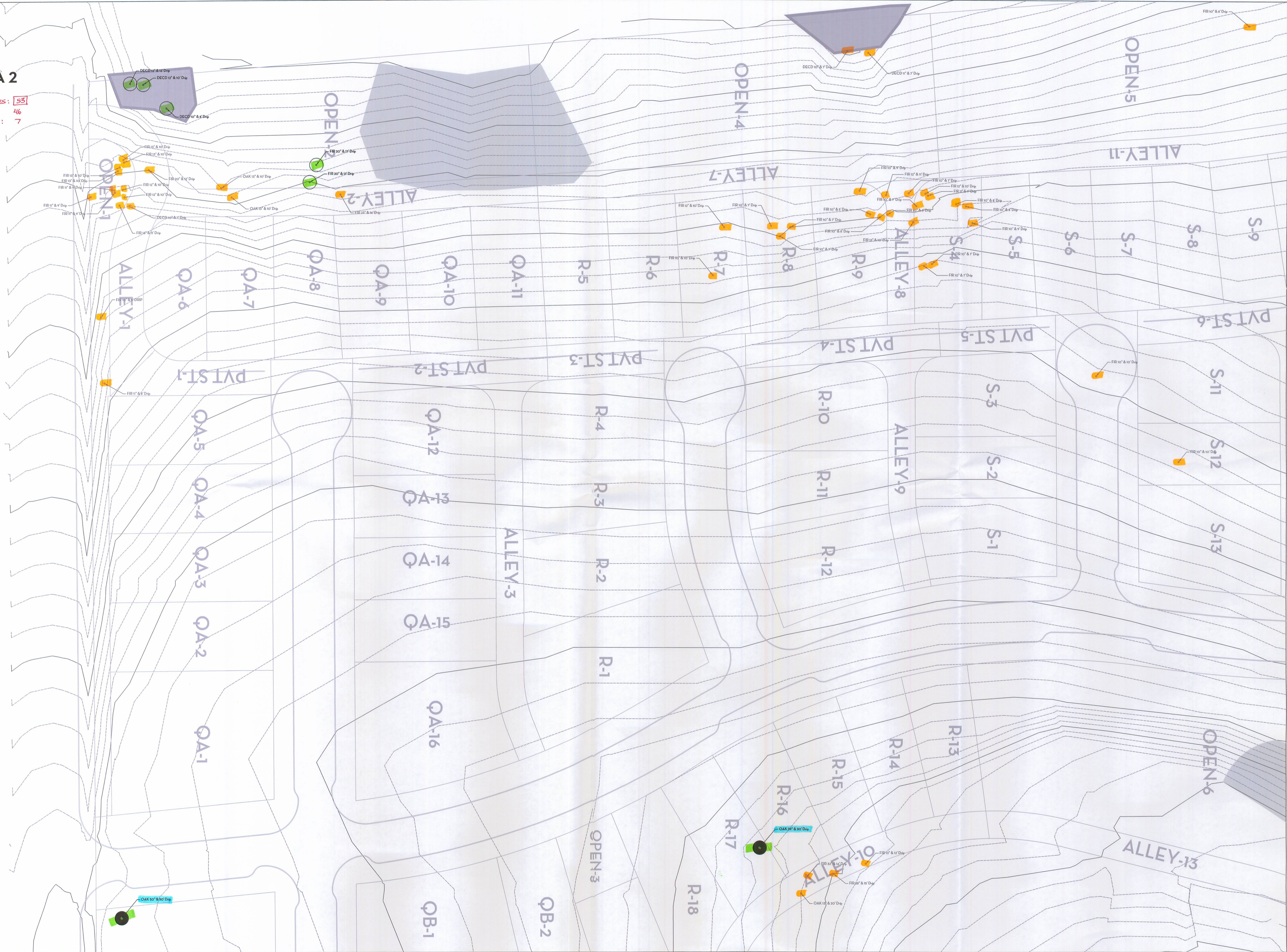
AREA 1 - TOTAL TREES: 64
REMOVED: 8
PRESERVED: 56



AREA 2

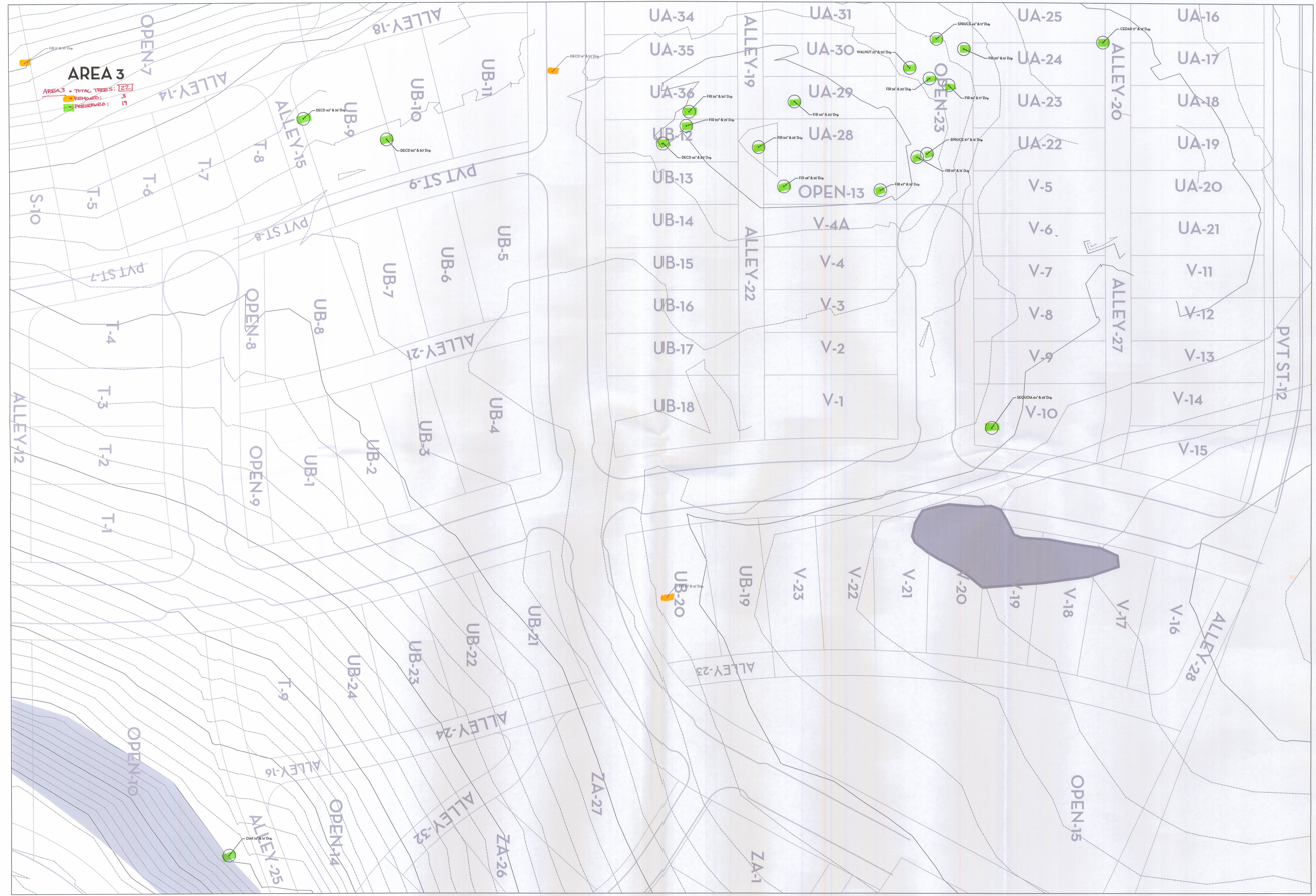
AREA 2 - TOTAL TREES: 55

- REMOVED: 46
- PRESERVED: 7



AREA 3

AREA 3 • TOTAL TREES: 22
REMOVED: 3
PRESERVED: 19



AREA 4

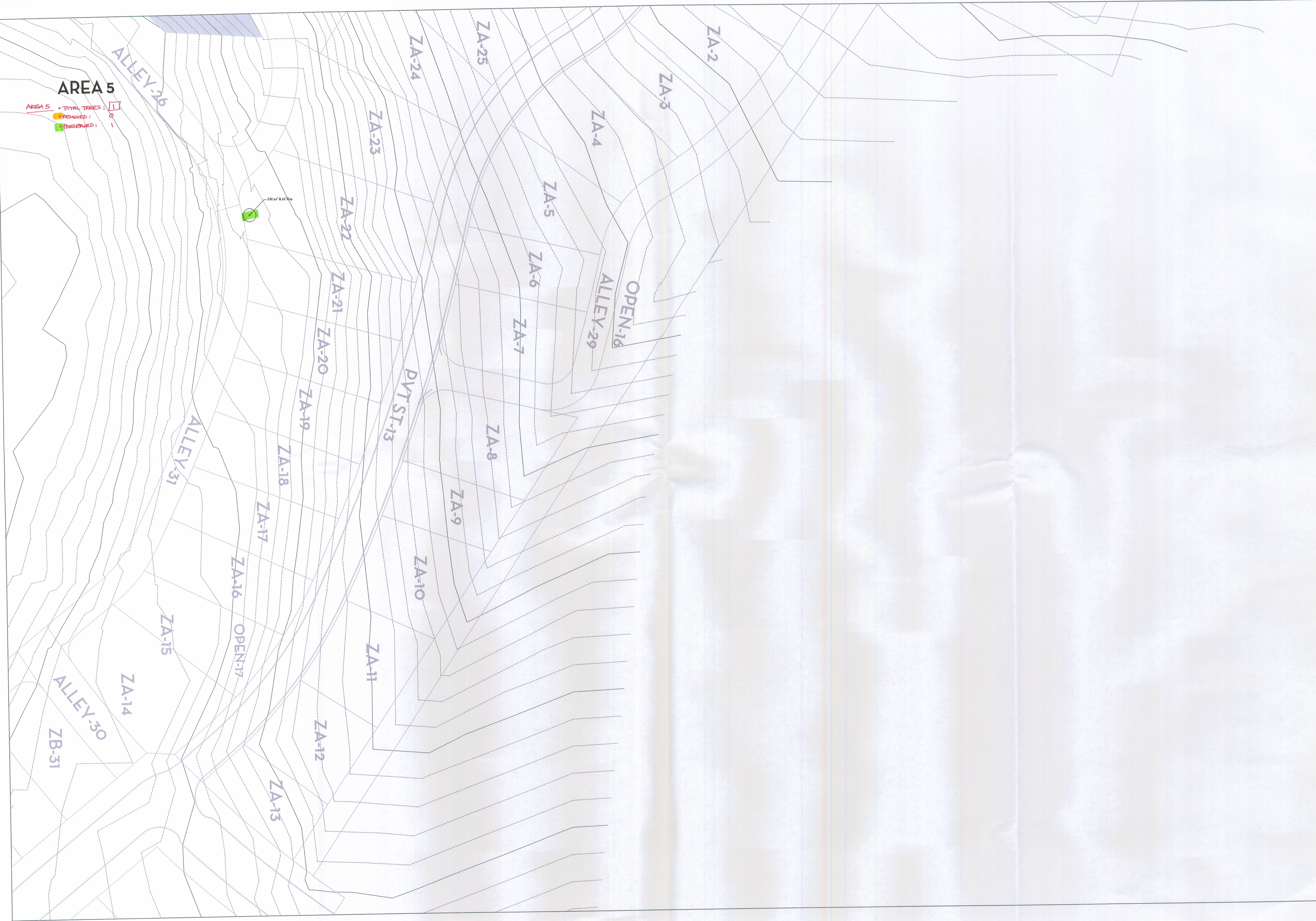
AREA 4 • TOTAL TREES: 14
REMOVED: 6
PRESERVED: 8



AREA 5

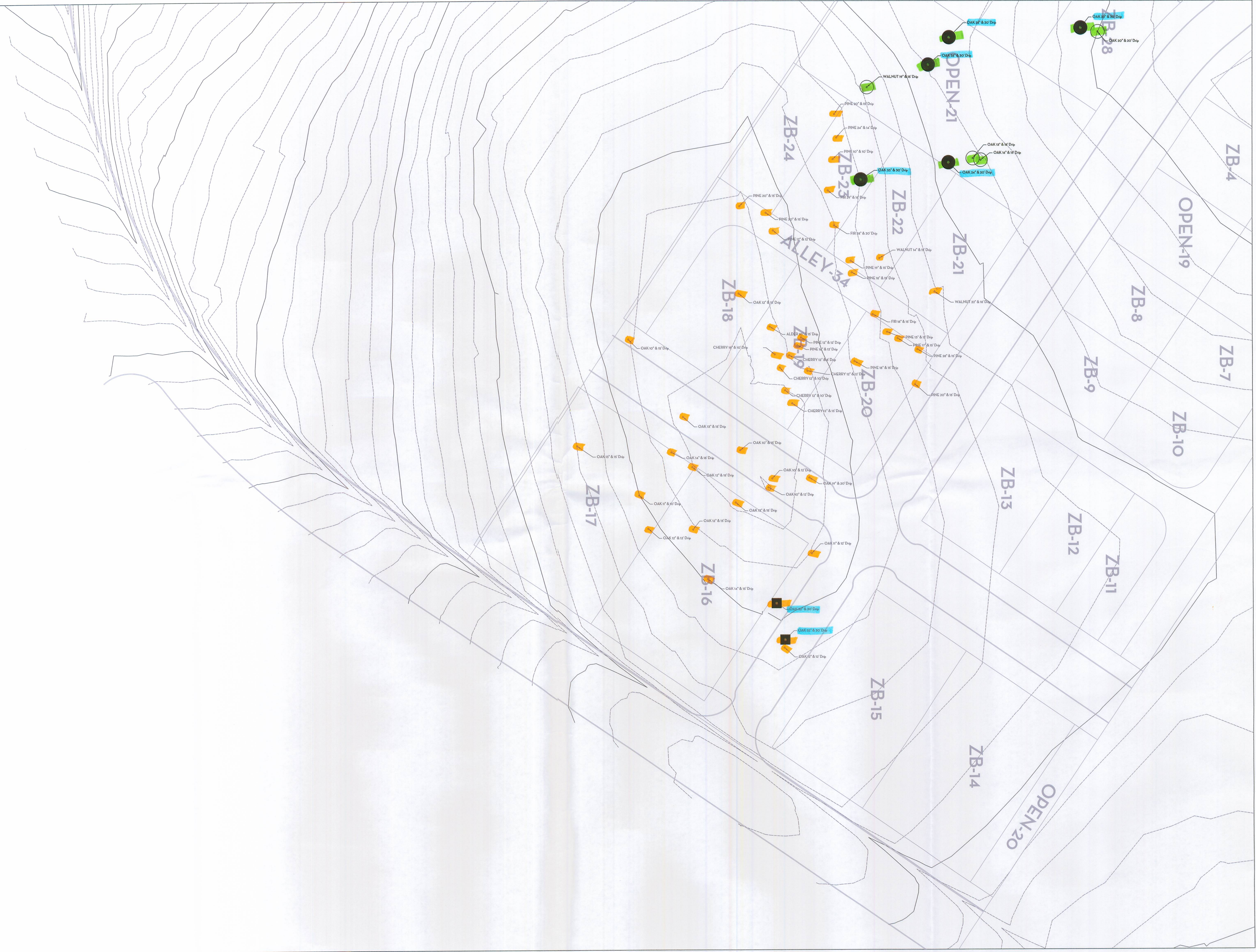
AREA 5 - TOTAL TREES: 1
REMOVED: 0
PRESERVED: 1

FIR 2' x 6 25' High



AREA 6

AREA 6 - TOTAL TREES: 55
REMOVED: 46
PRESERVED: 9





AREA 7

ZB-2

ZB-1

ZB-3

AREA 7 - TOTAL TREES 101
REMOVED: 0
PRESERVED: 0

ZB-5

ZB-6

OPEN-18
ALLEY-33