

# Exhibit B - Neighborhood Meeting Documentation

**From:** Alli Langley

**Sent:** Wednesday, February 14, 2024 4:49 PM

**To:** spriem@hotmail.com; landuse@sesna.community; info@sesna.community

**Cc:** Colin McArthur <cmcarthur@cameronmccarthy.com>; Chase Gonty <cgonty@cameronmccarthy.com>; Matt Koehler <mkoehler@cameronmccarthy.com>; Rob Passage <rpassage@willamette.edu>; Mark Mazurier <mmazurie@willamette.edu>

**Subject:** Neighborhood meeting: Willamette University softball field upgrades

Hi Southeast Salem Neighborhood Association,

Because Willamette University's softball facility is within your neighborhood association boundaries, I wanted to make sure you're aware of a public meeting the university is hosting next Wednesday about planned improvements to its softball and baseball facilities.

## **Willamette University Softball & Baseball Field Improvements Neighborhood Meeting**

**Date:** February 21, 2024

**Time:** 6:30-7:30 p.m.

**Location:** Office of Admissions / WISH House, Willamette University, 970 Mill St., Salem, OR 97301

Light refreshments will be provided, a preliminary site plan will be available for review, and Willamette University representatives will be available to answer questions about the project. You can find more information about the meeting and proposed facility upgrades, including maps, in the attachment.

Thank you,  
Alli



**Alli Langley** (she/her)

Planner

Office 541-485-7385

Direct 458-234-6336

160 East Broadway, Eugene, Oregon 97401

133 SW 2nd Avenue, Suite 410, Portland, Oregon 97204

120 SW Crowell Way, Suite 300, Bend, Oregon 97702

[www.cameronmccarthy.com](http://www.cameronmccarthy.com)

# Exhibit B - Neighborhood Meeting Documentation

**From:** Alli Langley

**Sent:** Wednesday, February 14, 2024 4:51 PM

**To:** vjdodier@teleport.com; rozshirack7@gmail.com

**Cc:** Colin McArthur <cmcarthur@cameronmccarthy.com>; Chase Gonty <cgonty@cameronmccarthy.com>; Matt Koehler <mkoehler@cameronmccarthy.com>; Rob Passage <rpassage@willamette.edu>; Mark Mazurier <mmazurie@willamette.edu>

**Subject:** Neighborhood meeting: Willamette University baseball facility upgrades

Hi South Central Association of Neighbors,

Because Willamette University's baseball facility is within your neighborhood association boundaries, I wanted to make sure you're aware of a public meeting the university is hosting next Wednesday about planned improvements to its baseball and softball facilities.

## **Willamette University Baseball & Softball Facility Improvements Neighborhood Meeting**

**Date:** February 21, 2024

**Time:** 6:30-7:30 p.m.

**Location:** Office of Admissions / WISH House, Willamette University, 970 Mill St., Salem, OR 97301

Light refreshments will be provided, a preliminary site plan will be available for review, and Willamette University representatives will be available to answer questions about the project. You can find more information about the meeting and proposed facility upgrades, including maps, in the attachment.

Thank you,  
Alli



**Alli Langley** (she/her)

Planner

Office 541-485-7385

Direct 458-234-6336

160 East Broadway, Eugene, Oregon 97401

133 SW 2nd Avenue, Suite 410, Portland, Oregon 97204

120 SW Crowell Way, Suite 300, Bend, Oregon 97702

[www.cameronmccarthy.com](http://www.cameronmccarthy.com)



February 14, 2024

**RE: Willamette University  
Baseball and Softball Facility Improvements  
Applicant Neighborhood Meeting**

### **BACKGROUND**

Willamette University is planning upgrades to its existing baseball and softball facilities. The baseball facility is Spec Keene Stadium and John Lewis Field, constructed in 1989. The softball facility is Willamette University Softball Field, constructed in 1999.

### **THE PROJECT**

Willamette University plans to replace the baseball field's existing synthetic turf infield, field underdrainage, and stormwater conveyance as well as improve fencing, lighting, protective netting, pedestrian circulation, and viewing areas. The university also plans to replace the softball field's existing natural grass field with synthetic turf, update the field's drainage system and stormwater conveyance, and add lighting, protective netting, plaza hardscaping, and fencing.

### **THE SITES**

The baseball facility is south of campus, within Bush's Pasture Park, and extends to Mission Street SE. The facility is at 730 Mission St. SE and on tax lot 073W27D000200. The softball facility is east of campus near Bush Elementary School and Aldrich Park and is bounded by 14<sup>th</sup> Street SE to the east and a railroad to the west. The facility is at 605 14th St. SE and on tax lots 073W26CB02300 and 073W26CB02403. Both properties are within the Salem city limits and urban growth boundary, and the project includes land use approvals in advance of development.

**Meeting Date:** February 21, 2024  
**Time:** 6:30-7:30 p.m.  
**Location:** Office of Admissions / WISH House  
Willamette University  
970 Mill St.  
Salem, OR 97301

**Directions:** In Central Salem east of Winter Street on Mill Street. See attached map.

Light refreshments will be provided, and a preliminary site plan will be available for your review. Willamette University representatives will be available to answer questions about the project. We look forward to seeing you on February 21, 2024, at the Office of Admissions Building / WISH House.

For more information, contact Willamette University Athletics at 503-370-6420 or [athletics@willamette.edu](mailto:athletics@willamette.edu).





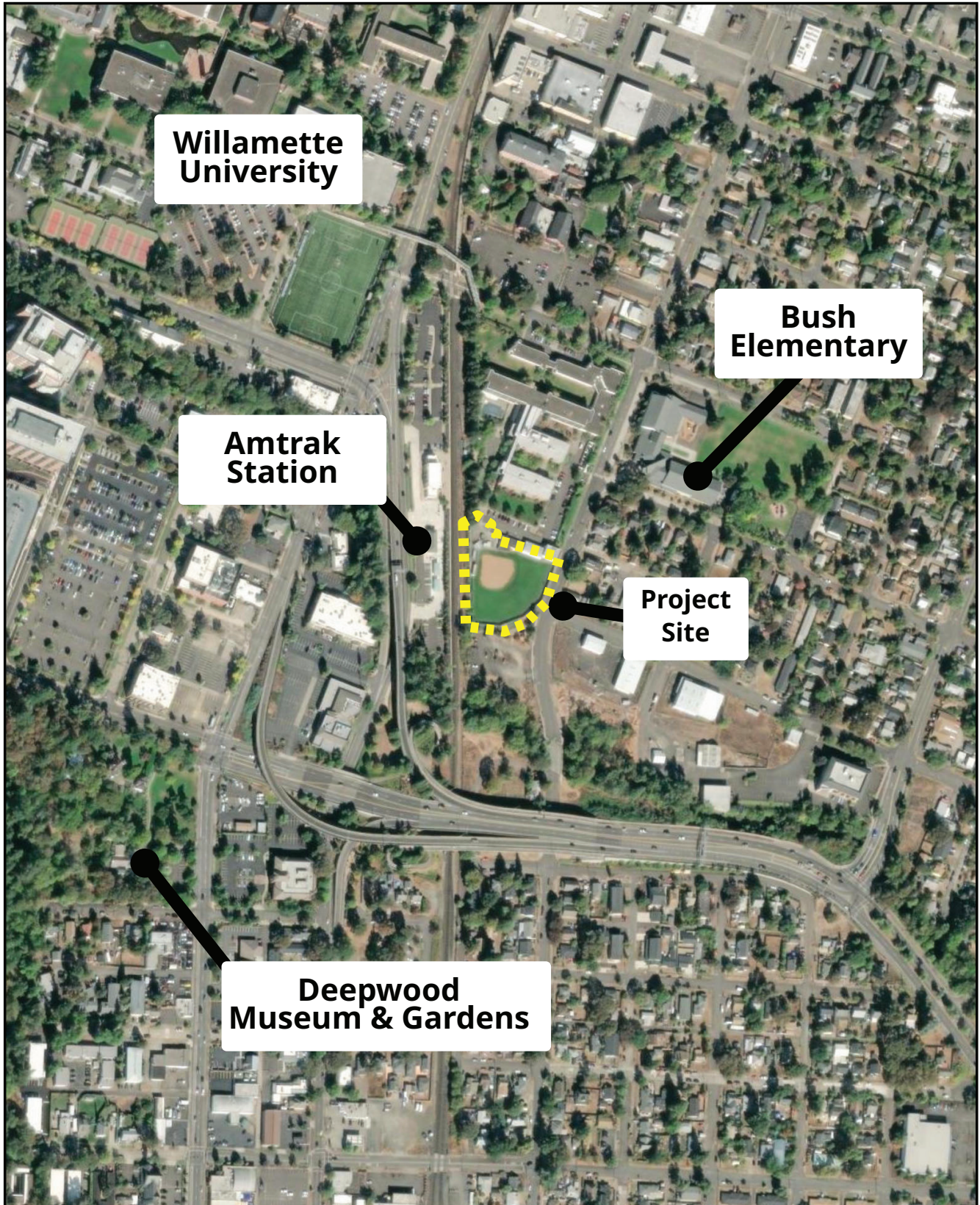
## Baseball Location

GCS: NAD 1983 HARN

PCS: State Plane Oregon South FIPS 3602 Feet Intl 0

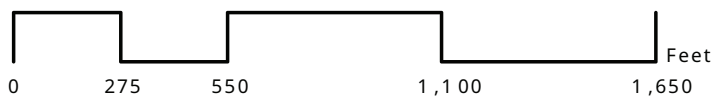




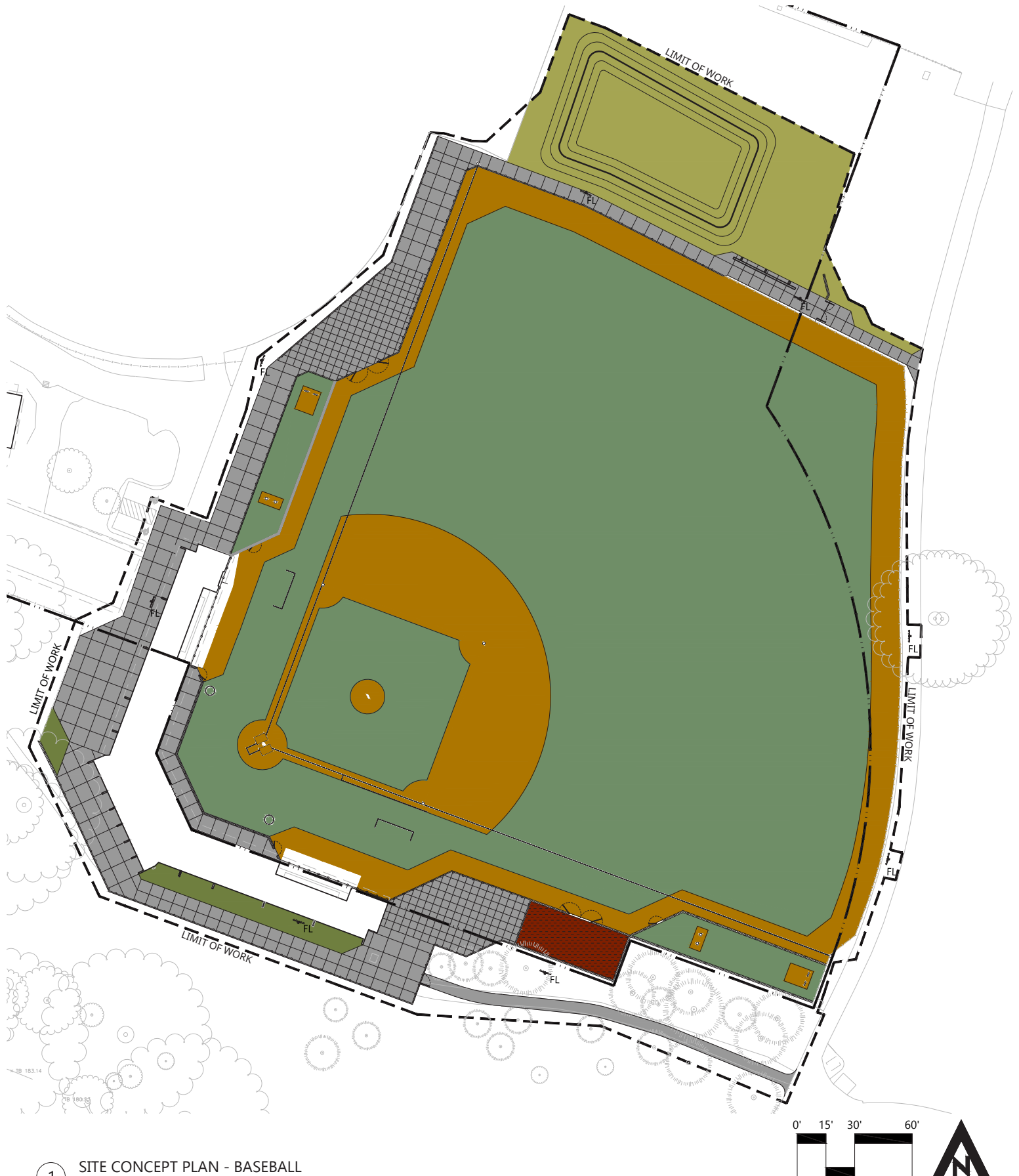


## Softball Location

GCS: NAD 1983 HARN  
PCS: State Plane Oregon South FIPS 3602 Feet Intl





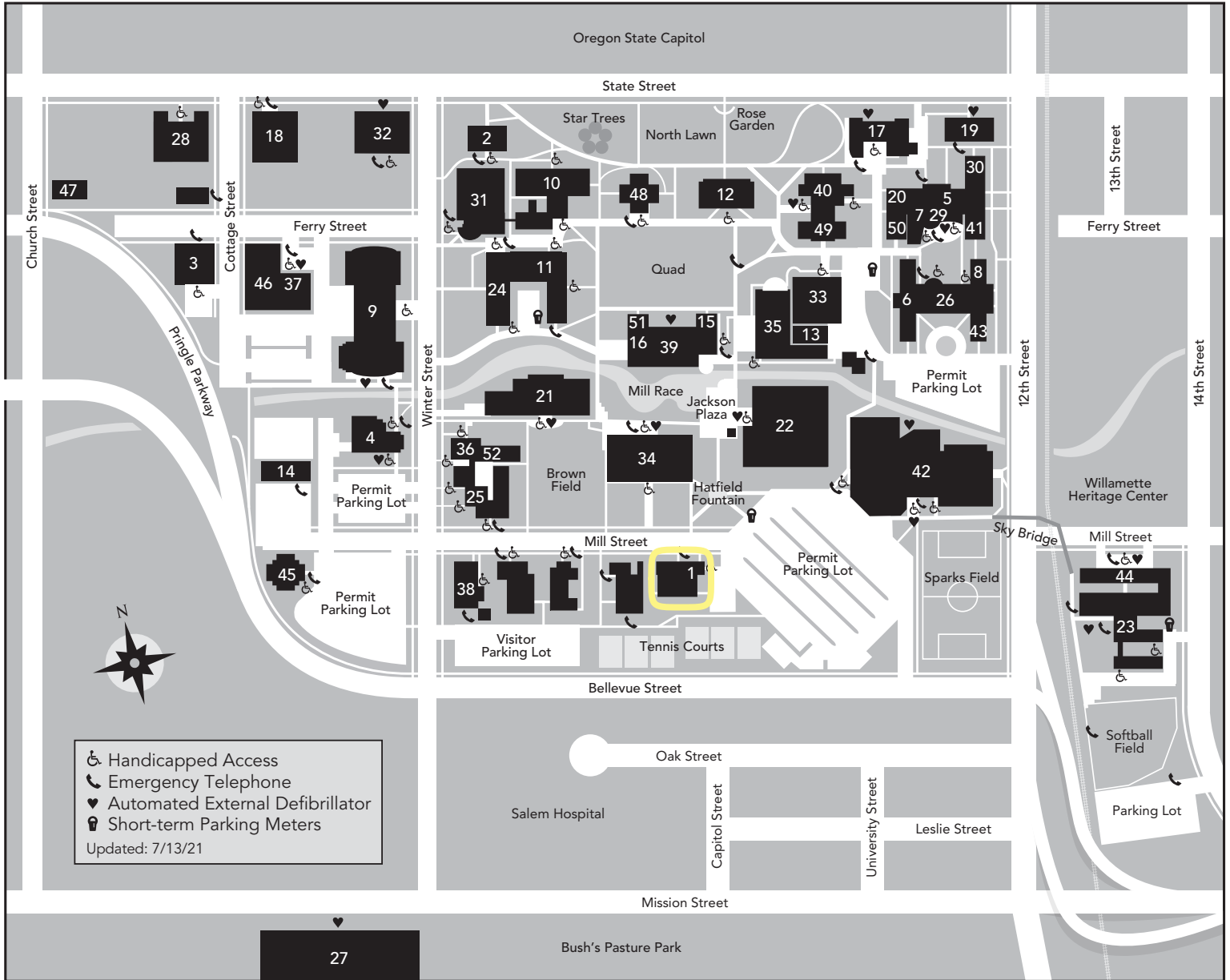




0' 10' 20' 40'







- |  |   |   |
|--|---|---|
| 1 Admission Office (undergraduate)                                 | 20 Global Learning Center (including International Education) | 38 Shepard House (Claremont School of Theology) |
| 2 Art Building   | 21 Goudy Commons  | 39 Smith Auditorium                             |
| 3 Atkinson Annex   | 22 Mark O. Hatfield Library                                   | 40 Smullin Hall                                 |
| 4 Atkinson Graduate School of Management (Seeley G. Mudd Building) | 23 Kaneko Commons   | 41 Southwood Hall                               |
| 5 Baxter Hall  | 24 Lausanne Hall  | 42 Lestle J. Sparks Center                      |
| 6 Belknap Hall   | 25 Lee House  | 43 Terra House                                  |
| 7 Bishop Wellness Center (Student Health)                          | 26 Matthews Hall  | 44 Tokyo International University of America    |
| 8 Cascadia House   | 27 McCulloch Stadium and Athletics Complex                    | 45 University Apartments                        |
| 9 College of Law (Truman Wesley Collins Legal Center)              | 28 Micah Building   | 46 University Services Building                 |
| 10 Collins Science Center  | 29 Montag Center  | 47 University Services Annex                    |
| 11 Doney Hall  | 30 Northwood Hall   | 48 Waller Hall                                  |
| 12 Eaton Hall  | 31 Olin Science Center  | 49 Walton Hall                                  |
| 13 Events and Facilities Maintenance Annex                         | 32 Oregon Civic Justice Center                                | 50 Westwood Hall                                |
| 14 Facilities Maintenance  | 33 M. Lee Pelton Theatre                                      | 51 Willamette Academy                           |
| 15 Fine Arts East  | 34 Putnam University Center                                   | 53 York House                                   |
| 16 Fine Arts West  | 35 Mary Stuart Rogers Music Center (including Hudson Hall)    |   |
| 17 Ford Hall   | 36 Renjen Center (Student Center for Equity and Empowerment)  |   |
| 18 Hallie Ford Museum of Art                                       | 37 Service Center (including Campus Safety)                   |   |
| 19 Gatke Hall  |   |   |
- 900 State Street, Salem, OR 97301  
University Information 503-370-6300  
willamette.edu





# **WILLAMETTE UNIVERSITY**

## **Baseball & Softball Facility Upgrades**

**Neighborhood Open House**  
**Feb. 21, 2024**

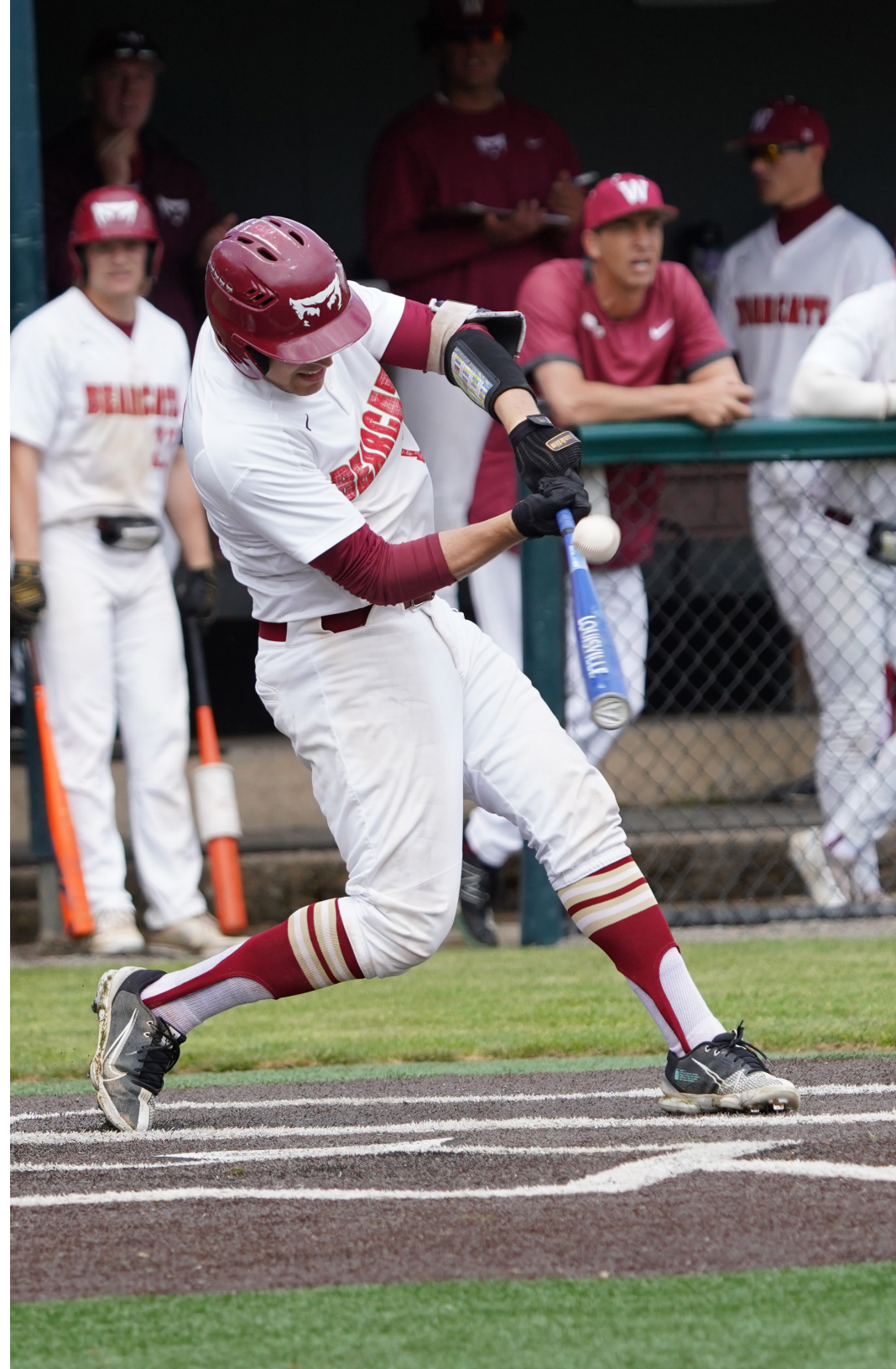


**CAMERON  
McCARTHY**  
LANDSCAPE ARCHITECTURE & PLANNING



# AGENDA

- Baseball facility
- Softball facility
- Timeline
- Q & A

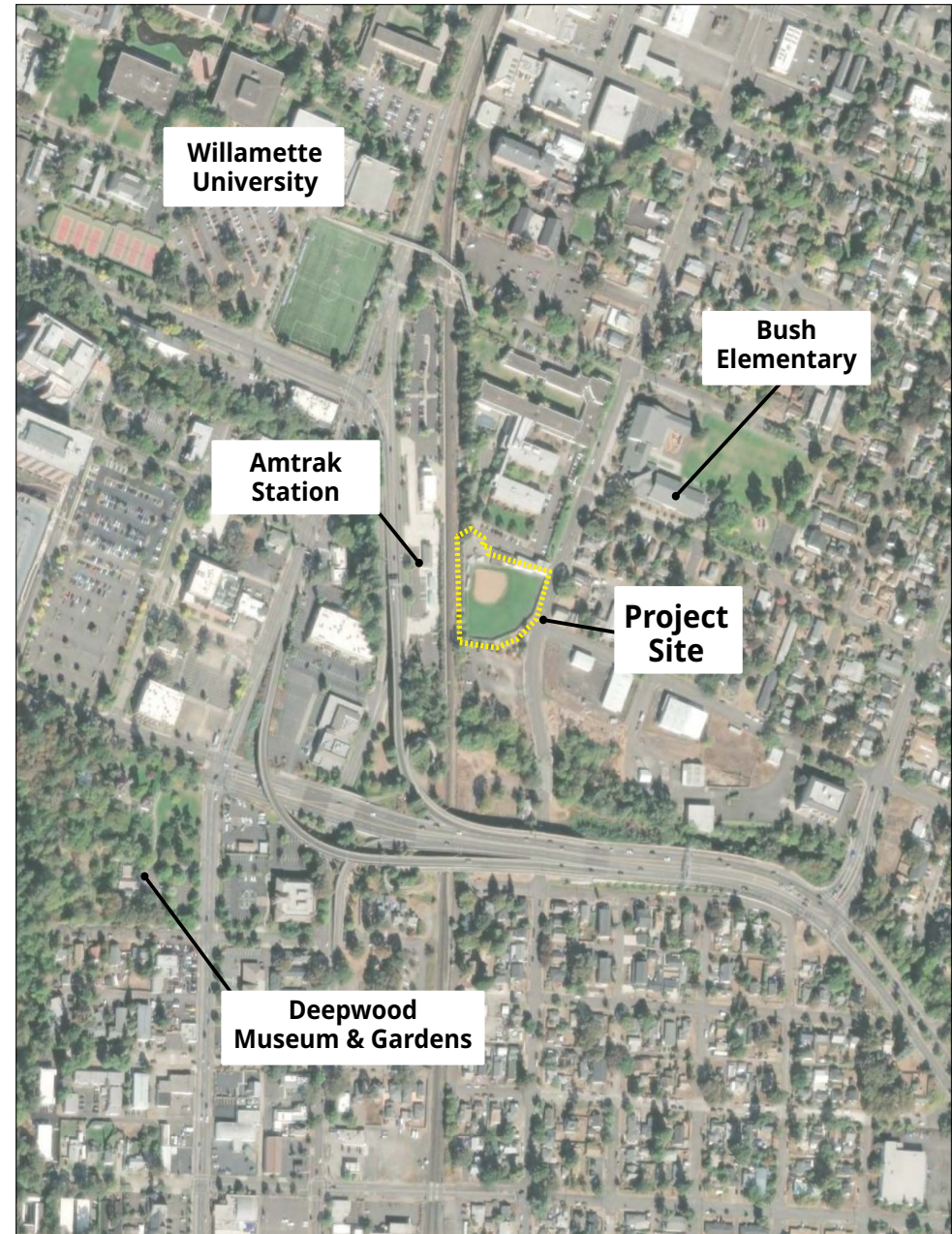




# PROJECT SITES

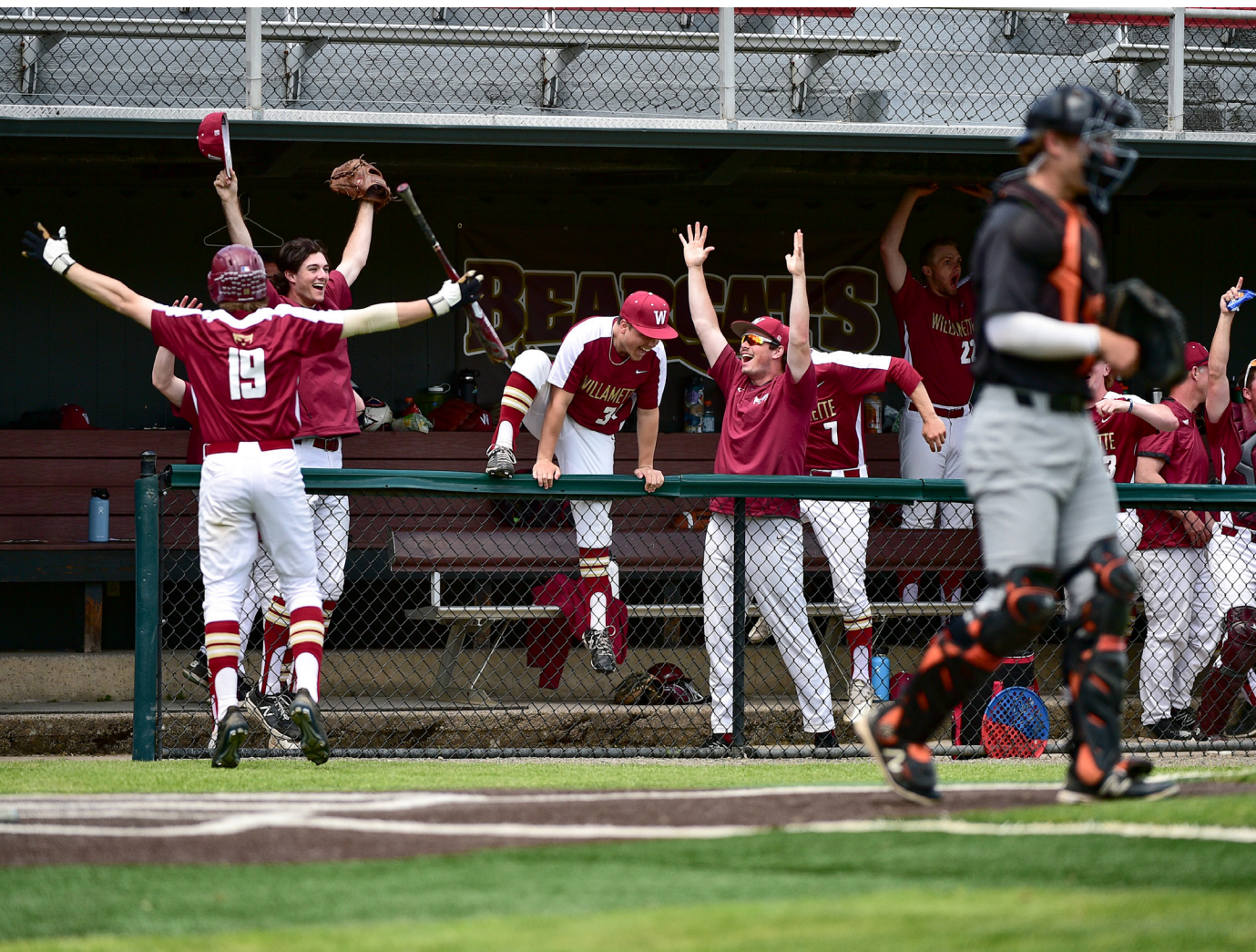
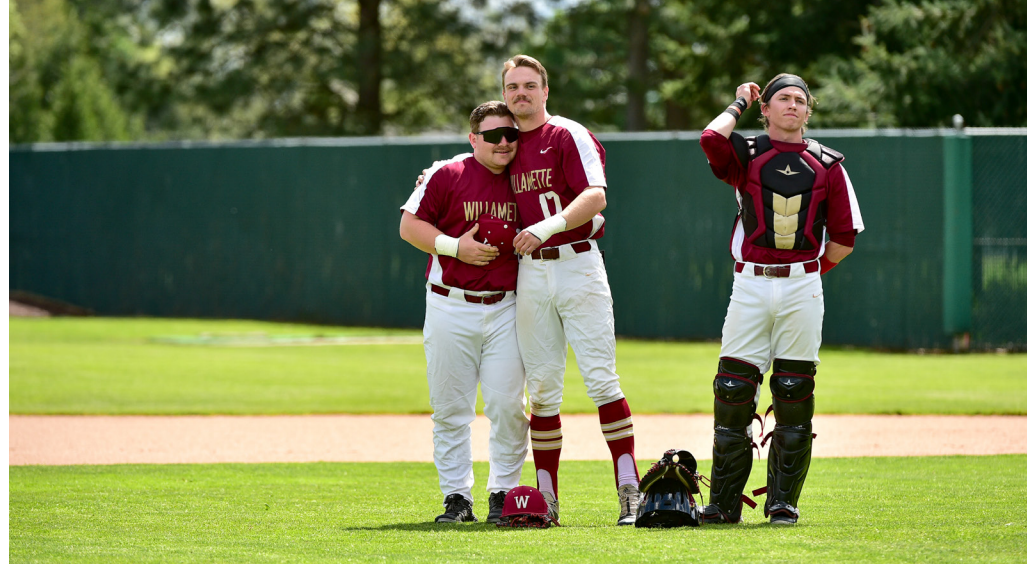


Baseball Location



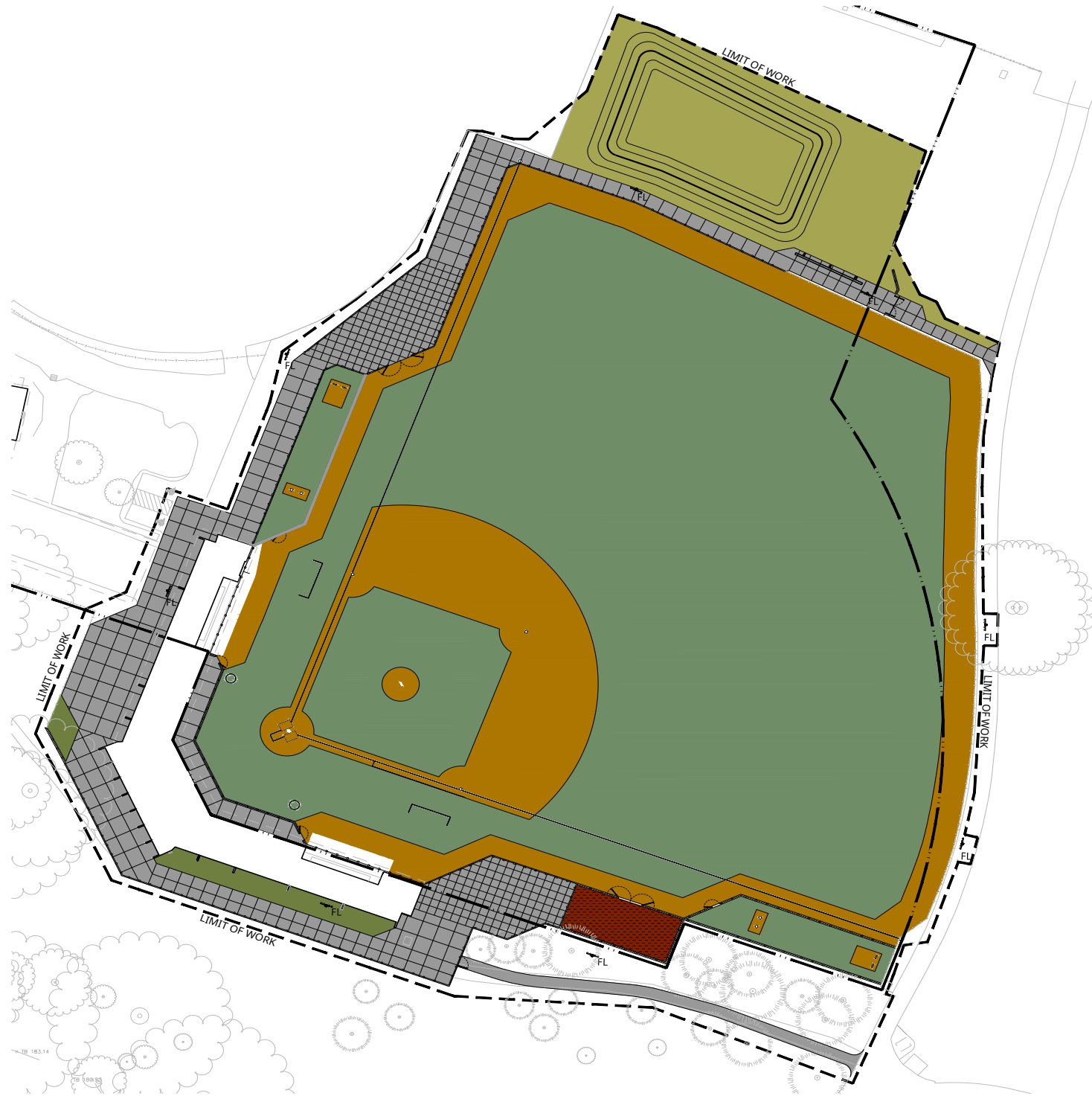
Softball Location







# BASEBALL PROJECT









# SOFTBALL PROJECT





# **TIMELINE**



An aerial photograph of a university campus. In the foreground, a large, multi-story red brick building with a central entrance and a small dome on its roof is visible. The building is surrounded by green lawns and trees. In the background, a dense forest of tall evergreen trees covers a hillside. The entire image has a reddish-orange tint.

# QUESTIONS



**Rob Passage**

Athletic Director

[rpassage@willamette.edu](mailto:rpassage@willamette.edu)

503-370-6420

---



**Willamette University  
Baseball & Softball Facility Upgrades  
Neighborhood Meeting Notes**

**Date:** Feb. 21, 2024  
**Time:** 6:30 PM  
**Location:** WISH House/ Admissions Office, Willamette University campus

**Attendees:** Rob Passage, Luke Emanuel, Matt Koehler, Alli Langley  
**Community members:** About 30

**NOTES**

1. **WELCOME AND INTRODUCTIONS** Alli
2. **MEETING PURPOSE AND COMMUNITY INPUT** Alli
3. **PROJECT OVERVIEW** Matt
4. **SCHEDULE** Matt
5. **QUESTIONS & CONCERNS** Alli and all
  - For softball facility
    - Increased lighting impacts
    - Increased noise impacts
    - Why not do the softball facility first (have funding for baseball facility)
    - Parking changes
  - For baseball facility
    - Increased use, more people in the park
    - Access, circulation, more people going to/from baseball facility and not using paths. Don't want more access points to baseball facility.
    - Path protection
    - Bathrooms. Is there one already? If not can one be added/if yes can it be expanded? Concern about Bush's Pasture Park not having enough bathrooms and desire to minimize negative impacts from increased baseball facility use.
    - Water drainage
    - Turf, chemicals, microplastics, health and environmental impacts
    - Sensitive/important species protection: Camas, oak trees
    - Encroachment on park land with new/moved fencing
    - Impacts on houselessness in the park
    - Security. Need for increased security?
    - Parking changes/concerns.

- Who is the contractor/builder?
- Partnership with the school district. Desire for schools to have some use without having to pay. Concern about whether they'll actually be able to use. Question about costs to schools.
- Increased lighting impacts. Examples of latest tech would be helpful.
- Increased noise impacts.
- Added seating? Seems Luke has told SCAN more seating would be added (people not excited about increased use don't want that).
- Timing/phasing/construction schedule and impacts.
- Impacts to cross-country races and events at the park.
- Garbage collection and impacts to city parks department maintenance and operations.
- Who has the final say/who approves the project?